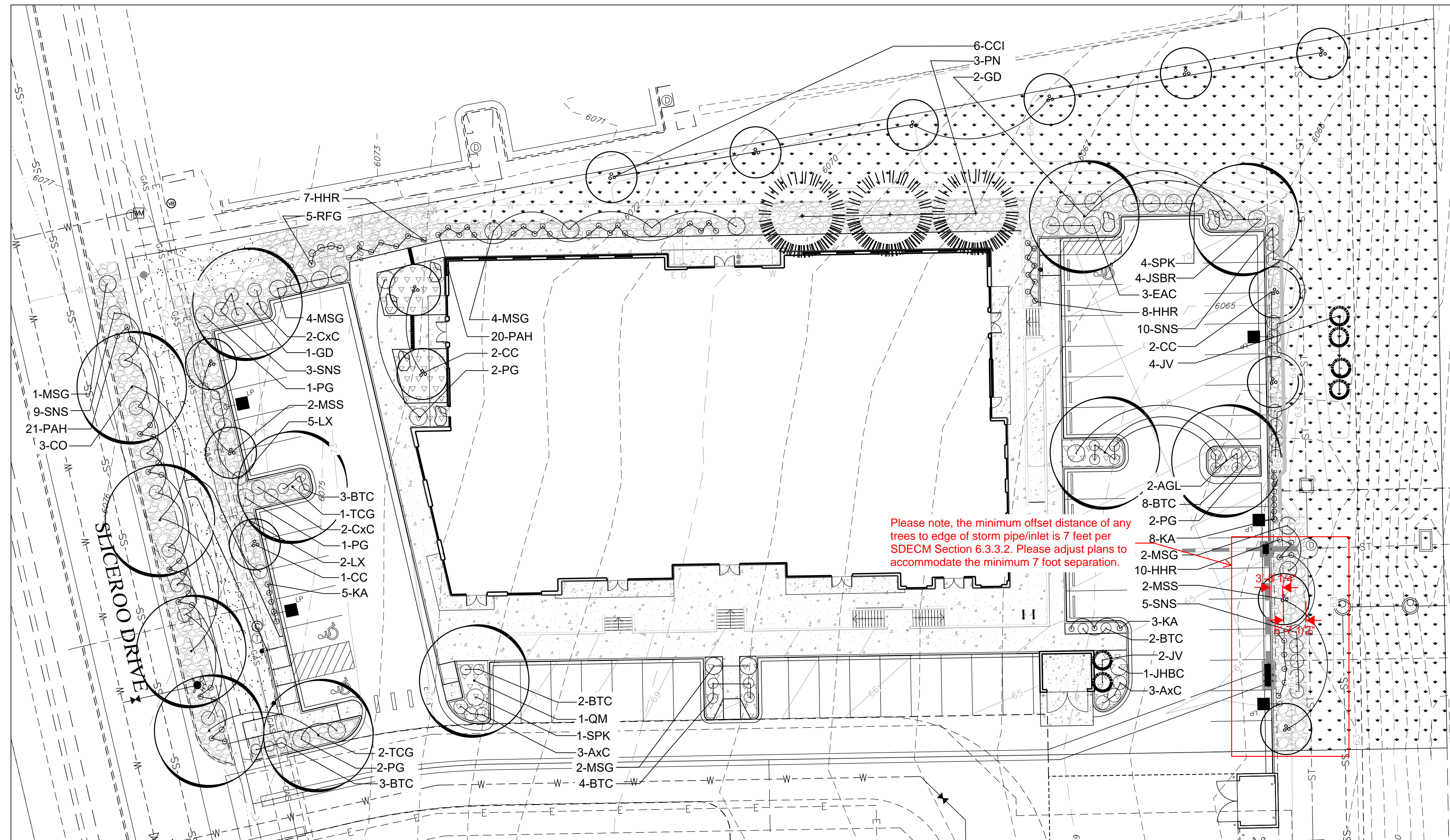


SITE PLAN HORSE CREEK COMMERCIAL

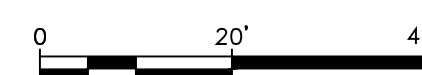
LOT 10B, DOUGLAS 234 FILING NO. 6, AMENDMENT 2
A PORTION OF THE SW 1/4, SE 1/4, SECTION 29, T6S, R66W, 6TH P.M.
TOWN OF PARKER, COUNTY OF DOUGLAS, STATE OF COLORADO

PLANT LEGEND

- | | | | |
|--|------------------------|--|------------------------------|
| | DECIDUOUS CANOPY TREES | | PERENNIALS |
| | ORNAMENTAL TREES | | 3/4\" - 2\" RIVER ROCK MULCH |
| | EVERGREEN TREES | | BLUEGRASS TURF |
| | EVERGREEN SHRUBS | | WOOD MULCH |
| | DECIDUOUS SHRUBS | | |



Scale: 1"=20'



Please include sight triangles in the landscape plan and avoid plans for trees within these areas. While the Town does not regulate sight distance for access points along private roadways, it is highly recommended by Town staff that sight lines in accordance with Town standard detail 24 be evaluated by design staff to ensure safe ingress and egress from the property. It is also important to note that sight triangles for private access points onto private roadways is the responsibility of the property owner to maintain.

PROPOSED PLANT LIST

| PLANTING SCHEDULE | | | | | | | | |
|---------------------------------|------|-----|--|---------------------------------|---------------|------------------|--------|-----------|
| TYPE | KEY | QTY | BOTANICAL NAME | COMMON NAME | PLANTING SIZE | SIZE AT MATURITY | NOTES | WATER USE |
| Trees | | | | | | | | |
| Deciduous | AGL | 2 | Aesculus glabra | Ohio Buckeye | 2.5" Cal | 20'-40' | B & B | M |
| | CO | 3 | Celtis Occidentalis | Western Hackberry | 2.5" Cal | 50' | B & B | M |
| | GD | 3 | Gumnocladus Dioicus | Kentucky Coffeetree | 2.5" Cal | 50' | B & B | L |
| | TCG | 3 | Tilia Cordata 'Greenspire' | Greenspire Linden | 2.5" Cal | 50' | B & B | M |
| Ornamental | QM | 1 | Quercus macrocarpa | Bur Oak | 2.5" Cal | 60' | B & B | M |
| | CCI | 6 | Crataegus crus-galli inermis | Thornless Cockspur Hawthorn | 2" Cal | 15'-20' | B & B | M |
| | CC | 5 | Cercis canadensis | Eastern Redbud | 2" Cal | 20'-30' | B & B | M |
| Evergreen | MSS | 4 | Malus 'Spring Snow' | Spring Snow Crabapple | 2" Cal | 15'-20' | B & B | M |
| | JV | 6 | Juniperus scopularum | Rocky Mountain Juniper | 6' Ht | 15'-20' | B & B | L-M |
| | PN | 3 | Pinus Nigra 'Arnold's Sentinel' | Austrian Pine | 6' Ht | 40'-60' | B & B | M |
| Shrubs | | | | | | | | |
| Deciduous | AxC | 6 | Arctostaphylos X Coloradoensis | Panchito Manzanita | 5 Gal | 3' | 5' OC | L |
| | CxC | 6 | Arctostaphylos x coloradoensis | Panchito Manzanita | 5 Gal | 4' | 4' OC | L |
| | BTC | 22 | Berberis thunbergii 'Crimson Pygmy' | Crimson Pygmy Japanese Barberry | 5 Gal | 2'-3' | 5' OC | L |
| | EAC | 3 | Euonymus alatus 'Compactus' | Dwarf Burning Bush | 5 Gal | 6'-8' | 3' OC | L |
| | SNS | 27 | Spiraea nipponica 'Snowmound' | Snowmound Spirea | 5 Gal | 3'-4' | 3' OC | L |
| | SPK | 5 | Syringa patula 'Miss Kim' | Miss Kim Lilac | 5 Gal | 6'-8' | 5' OC | L |
| | LX | 7 | Ligustrum x vicaryi | Golden Vicary Privet | 5 Gal | 6'-8' | 4' OC | L |
| Evergreen | PG | 8 | Picea pungens 'Globosa' | Globe Spruce | 5 Gal | 3'-5' | 5' OC | L |
| | JSBR | 4 | Juniperus sabinia 'Broadmoor' | Broadmoor Juniper | 5 Gal | 1'-2' | 5' OC | L |
| | JHBC | 1 | Juniperus horizontalis 'Blue Chip' | Blue Chip Juniper | 5 Gal | 12"-15" | 5' OC | L |
| Perennials & Ornamental Grasses | | | | | | | | |
| Perennials & Grasses | RFG | 5 | Rudbeckia Fulgida 'Goldstrum' | Black Eyed Susan | 1 Gal | | 24" OC | L |
| | MSG | 13 | Miscanthus Sinensis 'Gracillimus' | Maiden Grass | 5 Gal | | 4' OC | L |
| | PAH | 41 | Pennisetum alopecuroides 'Hameln' | Dwarf Fountain Grass | 2 Gal | | 18" OC | L |
| | HHR | 25 | Hermerocallis 'Happy Returns' | Dwarf Yellow Daylily | 1 Gal | | 18" OC | L |
| | KA | 16 | Calamagrostis X Acutiflora 'Karl Forester' | Karl Forester Grass | 1 Gal | | 4' OC | L |

LANDSCAPE PLAN
DOUGAS 234 FILING NO. 6, AMD. 2
DATE: FEBRUARY 12, 2025
SHEET L 1

