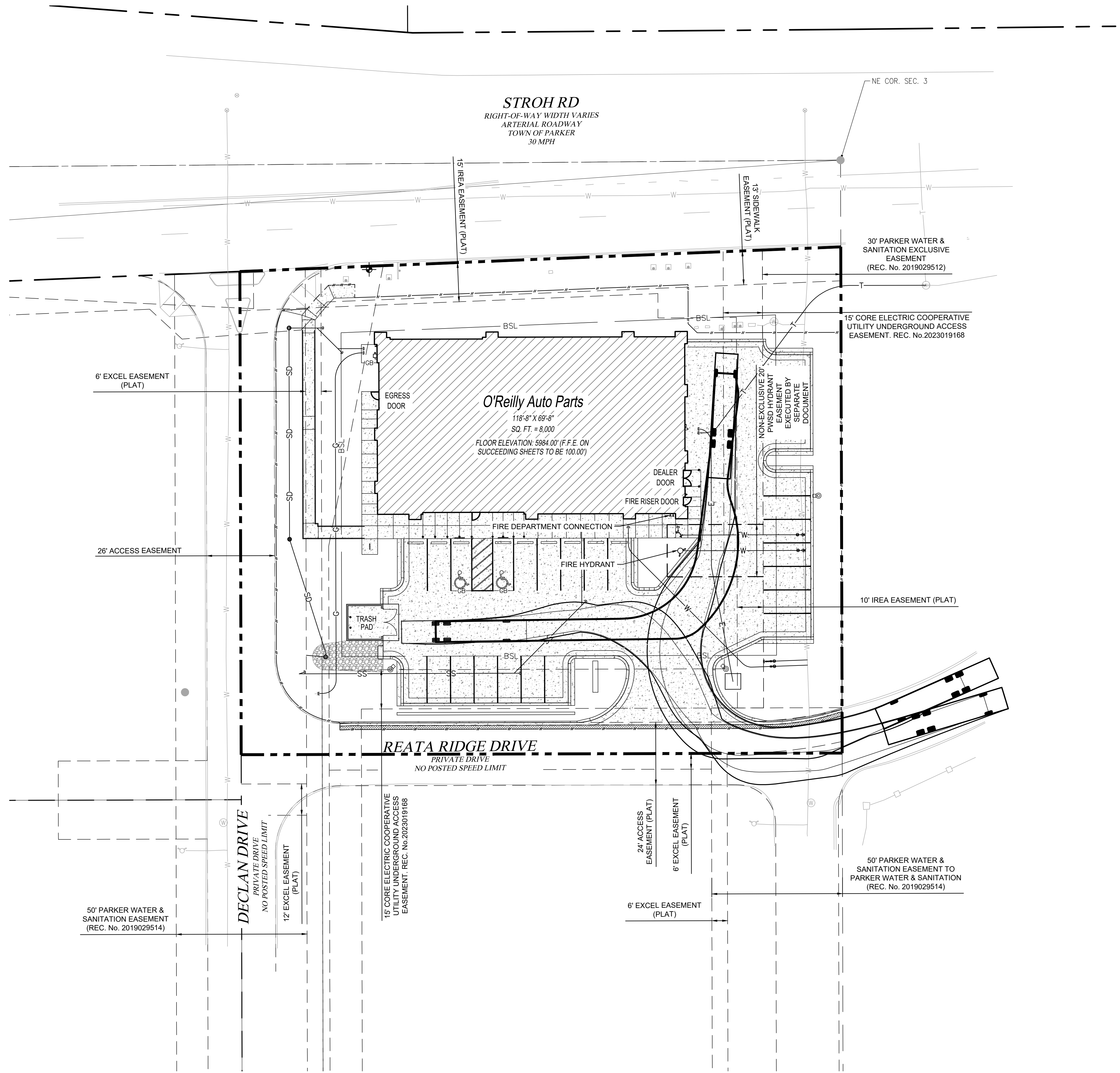
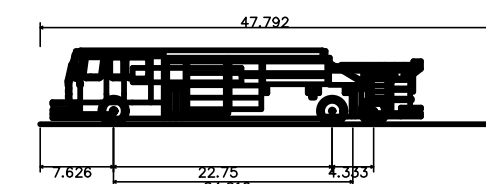


Feb 20, 2025 - 10:25am by ksp@pca.com - K:\Projects\1041247\Fire Truck\1041247-Fire Truck.dwg



## LEGEND

- NOTE: REFER TO SURVEY FOR EXISTING CONDITIONS SYMBOLS LEGEND.
- RIGHT-OF-WAY
  - O'REILLY PROPERTY LINE
  - ADJACENT PROPERTY LINE
  - EXISTING EASEMENT
  - PROPOSED EASEMENT
  - BSL — BUILDING SETBACK LINE
  - ROAD CENTERLINE
  - LIMIT OF DISTURBANCE
  - PROPOSED SAWCUT
  - W — PROPOSED WATER LINE
  - SD — PROPOSED STORM DRAIN LINE
  - SS — PROPOSED SEWER LINE
  - E — PROPOSED ELECTRIC LINE
  - G — PROPOSED GAS LINE
  - T — PROPOSED TELEPHONE LINE
  - PROPOSED SIGN
  - PROPOSED WHEEL STOP
  - PROPOSED BOLLARD
  - PROPOSED FDC
  - PROPOSED FIRE HYDRANT
  - PROPOSED GATE VALVE
  - PROPOSED THRUST BLOCK
  - PROPOSED CLEANOUT
  - PROPOSED LIGHT POLE
  - PROPOSED RIPRAP



South Metro Fire Rescue Truck	47.792ft
Overall Length	8.500ft
Overall Width	7.826ft
Overall Body Height	0.611ft
Min Body Ground Clearance	7.921ft
Track Width	5.00s
Lock-to-lock time	40.00°
Max Wheel Angle	