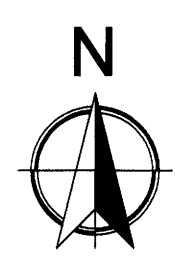


**1 SITE SIGNAGE PLAN**  
 SG1.1 SCALE: 1" = 20'-0"



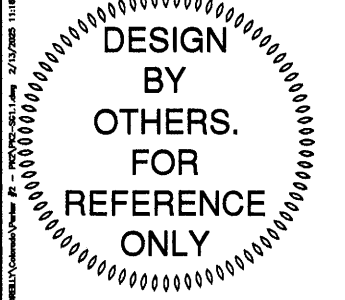
**GENERAL NOTES**

- (A) REFER TO PROJECT MANUAL AND SCOPE OF WORK SCHEDULE FOR ADDITIONAL REQUIREMENTS.
- (B) SITE DIMENSIONS TO FACE OF CONCRETE FOUNDATION, SIDEWALK, CURB GUTTER LINE, PROPERTY LINE, OR CENTER LINE OF STRIPING UNLESS OTHERWISE NOTED.
- (C) COORDINATE WORK WITH OTHER SITE RELATED DEVELOPMENT DRAWINGS.
- (D) PRIOR TO INSTALLATION, CONTRACTOR TO VERIFY LOCATIONS OF LIGHT POLES, LANDSCAPING, AND UTILITIES DO NOT CONFLICT WITH SITE SIGN LOCATION SHOWN. REFER TO US1 AND CIVIL FOR UTILITY LOCATIONS. IF CONFLICT IS DISCOVERED, CONTRACTOR TO NOTIFY OWNER'S REPRESENTATIVE PRIOR TO PROCEEDING WITH THE WORK.
- (E) "COMING SOON" TEMPORARY CONSTRUCTION SIGN TO BE PROVIDED BY CONTRACTOR. APPLIED SIGNAGE GRAPHICS TO BE OWNER FURNISHED AND CONTRACTOR INSTALLED. LOCATE TEMPORARY CONSTRUCTION SIGN ON SITE SO AS TO BE VISIBLE TO PUBLIC FROM RIGHT-OF-WAY. REFER TO DETAIL 1/SG1.2.

**SPECIAL NOTE**  
 AVOID OBSCURING VISIBILITY OF SITE SIGN FROM RIGHT OF WAY WITH LARGE PLANTINGS AND LANDSCAPING. SUBMIT LANDSCAPING LAYOUT FOR FINAL OWNER REVIEW AND APPROVAL PRIOR TO INSTALLATION.

**KEY NOTES**

- (1) SITE SIGN, REFER TO ELEVATION 2/SG1.2



**TIMOTHY M. GUILLOT**  
 ARCHITECT  
 1736 East Sunshine, Suite 417  
 Springfield, Missouri 65804  
 417.862.6558  
 Fax: 417.862.3265  
 e-mail: architect@ctletyschneider.com

PROJECT:  
**NEW O'REILLY AUTO PARTS STORE**  
 STROH RD  
 PARKER, CO #2  
**SITE SIGNAGE PLAN**

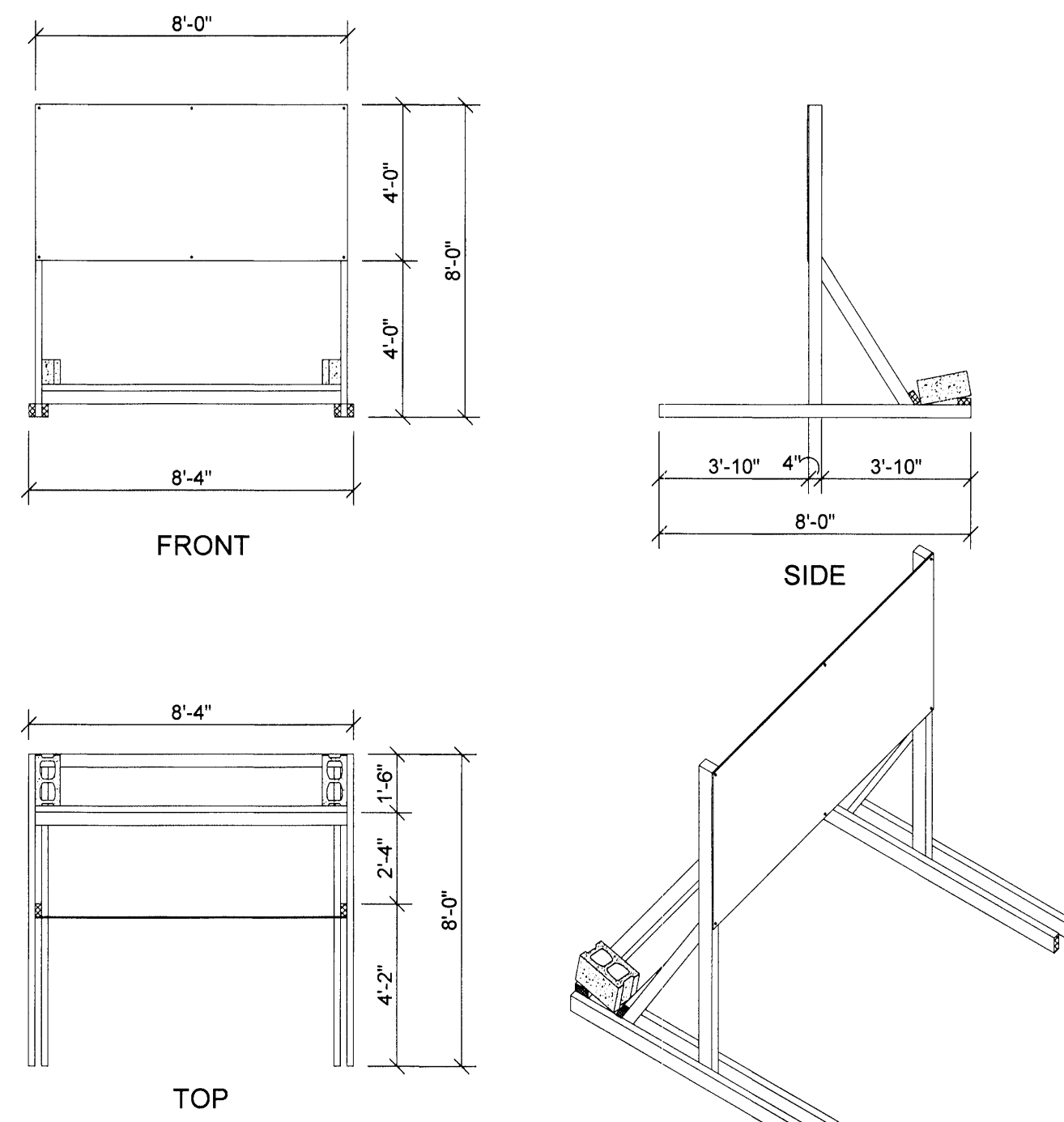
**O'Reilly AUTO PARTS**  
 CORPORATE OFFICES  
 233 SOUTH PATTERSON  
 SPRINGFIELD, MISSOURI 65802  
 (417) 862-2674 TELEPHONE

COMM #	4884
DATE:	2-14-25
REVISION	
DATE:	

**CAUTION:**  
 INFORMATION ON THIS DRAWING CONCERNING TYPE AND LOCATION OF UNDERGROUND AND OTHER UTILITIES IS NOT GUARANTEED TO BE ACCURATE OR ALL INCLUSIVE. THE CONTRACTOR IS RESPONSIBLE FOR MAKING HIS OWN DETERMINATION AS TO THE TYPE AND LOCATION OF UNDERGROUND AND OTHER UTILITIES AS MAY BE NECESSARY TO AVOID DAMAGE THERETO.



**Know what's below  
 Call before you dig.**



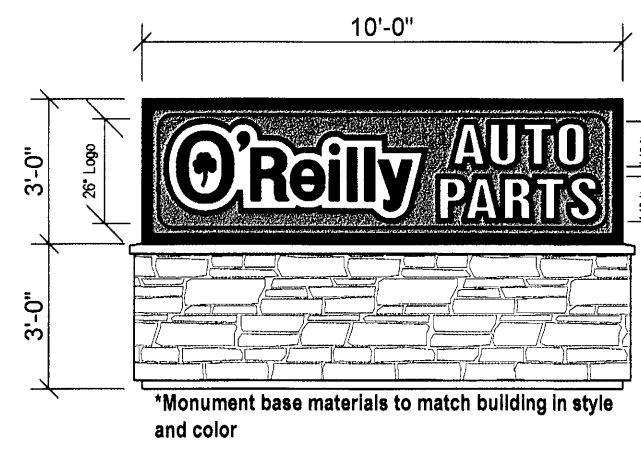
**1**  
**COMING SOON**  
**TEMPORARY CONSTRUCTION SIGN**  
 SQ1.2 SCALE: 1/4" = 1'-0"

**MONUMENT BASE:**  
 CONCRETE MASONRY UNIT (CMU) CONSTRUCTION. REFER TO STRUCTURAL DRAWINGS FOR MORE DETAILS.

MFG: (REFER TO PROJECT MANUAL)  
 SIZE: 8"X8"X16" (NOM.)  
 TEXTURE: SPLIT FACE  
 FINISH: FIELD PAINT  
 COLOR: SHERWIN WILLIAMS "SOFTER TAN" SW6141 (SATIN)  
 NOTE: REFER TO "CONCRETE MASONRY UNIT SPECIAL SCHEDULE OF TREATMENTS" FOR ADDITIONAL REQUIREMENTS.

**CONCRETE MASONRY UNIT (CMU) EXTERIOR SURFACE COATINGS:**

- PRIMER: "LOXON" ACRYLIC BLOCK SURFACER "LX01W0200-LXN BLOCK SURF. WHT" (NO LESS THAN 16 MILS). TWO COATS MAY BE REQUIRED TO ACHIEVE PINHOLE FREE SURFACE. (REFER TO EXTERIOR FINISH SCHEDULE).
- COAT 1: "LOXON" SELF-CLEANING ACRYLIC COATING "LX13W0051-LXN SELF-CLEAN EW" (NO LESS THAN 6 MILS). (REFER TO EXTERIOR FINISH SCHEDULE).
- COAT 2: "LOXON" SELF-CLEANING ACRYLIC COATING "LX13W0051-LXN SELF-CLEAN EW" (NO LESS THAN 6 MILS). (REFER TO EXTERIOR FINISH SCHEDULE).



**MONUMENT SIGN**  
 Part# 3\_15-MonumentCabinet.PE.DWG  
 Scale: 1/4" = 1'-0"

Manufacture and supply one (1) new diff illum. monument cabinet with formed and embossed faces.

Faces are formed out of .150 lexan with 2" draw. "O'Reilly" graphics are double embossed, "Auto Parts" copy is single embossed with painted graphics on 2nd surface. Graphics to match PMS 200c Red, PMS 342c Green, Black & White.

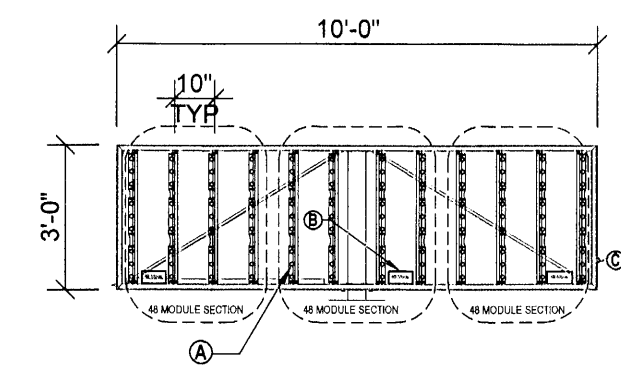
Extruded cabinet with 2 1/4" (removable) non-hinged retainers. Face slides for access. Internal steel sq. tube w/external steel bott. up plate(s) for C-150 load ratings.

Vertical Principal-Patriot Series (7100K) Module UL Part# PL-PT71-XL-P - White LED illumination.

Paint cabinet to: Gloss Black.

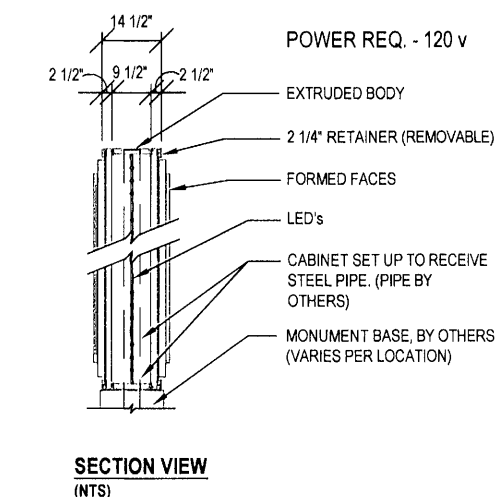
Cabinet to be installed w/boft up plate(s).

**2**  
**GROUND SIGN ELEVATION**  
 SQ1.2 SCALE: 1/4" = 1'-0"



**LED LAYOUT**  
 Scale: 1/4" = 1'-0"

- LED population: Principal-Patriot Series (7100K) Module UL Part# PL-PT71-XL-P - White LED illumination. Lumens per linear foot (160). Total population of 144 modules. Vertical LEDs on alum. str @ 10" w- centers.
- Qty. of (4) Principal P-LED (P-OH096-24-HE) 24V DC power supplies. Mount to bottom rail.
- U. L. approved disconnect switch.



**SECTION VIEW**  
 (WTS)

**GENERAL NOTES**

- (A) REFER TO PROJECT MANUAL FOR ADDITIONAL REQUIREMENTS.
- (B) CONTACT OWNER'S OR TENANT'S DESIGNATED PROJECT ADMINISTRATOR FOR QUESTIONS OR CLARIFICATIONS.
- (C) PERMANENT SIGNAGE OWNER FURNISHED AND INSTALLED. (REFER TO SCOPE OF WORK SCHEDULE). SIGNAGE GRAPHICS PROVIDED FOR REFERENCE ONLY (N.I.C.) AND CONTRACTOR'S COORDINATION WITH SPECIFIC PROJECT CONSTRUCTION CONDITIONS.
- (D) SITE SIGN ROUGH-IN ELECTRICAL TO BE PROVIDED BY CONTRACTOR.
- (E) REQUIRED GOVERNMENTAL PERMITS FOR PERMANENT TYPE SIGNAGE TO BE PROVIDED BY SIGN COMPANY PER OWNER'S DIRECTION (N.I.C.).
- (F) "COMING SOON" TEMPORARY CONSTRUCTION SIGN TO BE PROVIDED BY GENERAL CONTRACTOR. APPLIED SIGNAGE GRAPHICS TO BE OWNER FURNISHED AND GENERAL CONTRACTOR INSTALLED. LOCATE TEMPORARY CONSTRUCTION SIGN ON SITE SO AS TO BE VISIBLE TO PUBLIC FROM RIGHT-OF-WAY.
- (G) UNLESS OTHERWISE INDICATED, SITE MONUMENT SIGN FOUNDATION CONSTRUCTION BY GENERAL CONTRACTOR (BASE BID), REFER TO SHEET S1.2.

**SPECIAL NOTE:**  
 SIGN DESIGN BY OTHERS. REFER TO SIGN CONTRACTOR'S SHOP DRAWINGS FOR ADDITIONAL REQUIREMENTS.

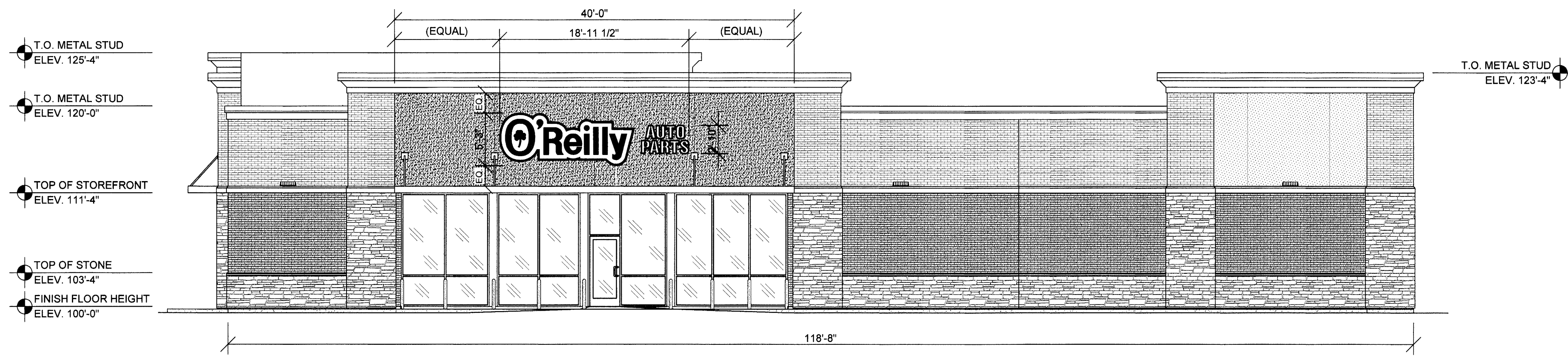
DESIGN BY OTHERS FOR REFERENCE ONLY

**TIMOTHY M. GUILLOT**  
**ARCHITECT**  
 1736 East Sunshine, Suite 417  
 Springfield, Missouri 65804  
 e-mail: architect@esterlytechnol.com  
 417.862.0558  
 Fax: 417.862.0265

**PROJECT:**  
**NEW O'REILLY AUTO PARTS STORE**  
**STROH RD**  
**PARKER, CO #2**  
**SITE SIGNAGE DETAILS**

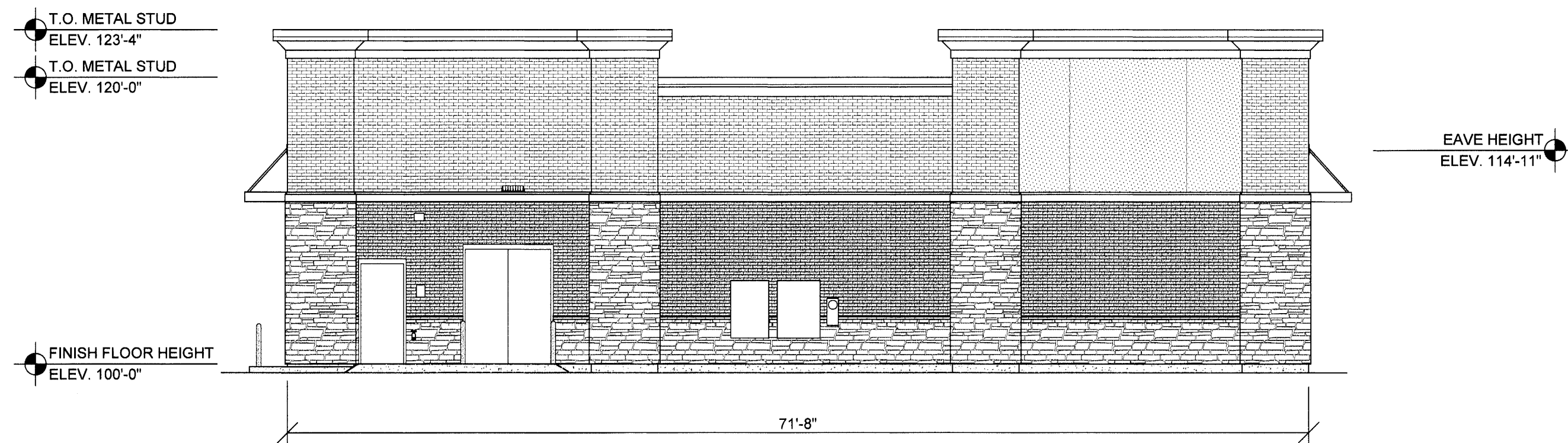
**O'Reilly AUTO PARTS**  
 CORPORATE OFFICES  
 233 SOUTH PATTERSON  
 SPRINGFIELD, MISSOURI 65802  
 (417) 862-2674 TELEPHONE

COMM #	4884
DATE:	2-14-25
REVISION	
DATE:	



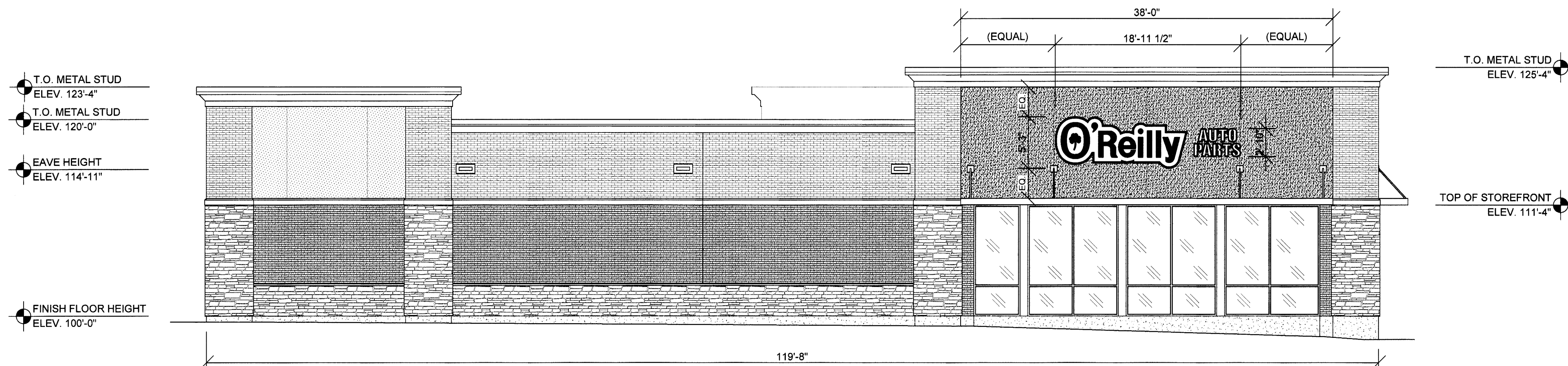
**1 FRONT EXTERIOR ELEVATION**

SG2.1 SCALE: 1/8" = 1'-0"



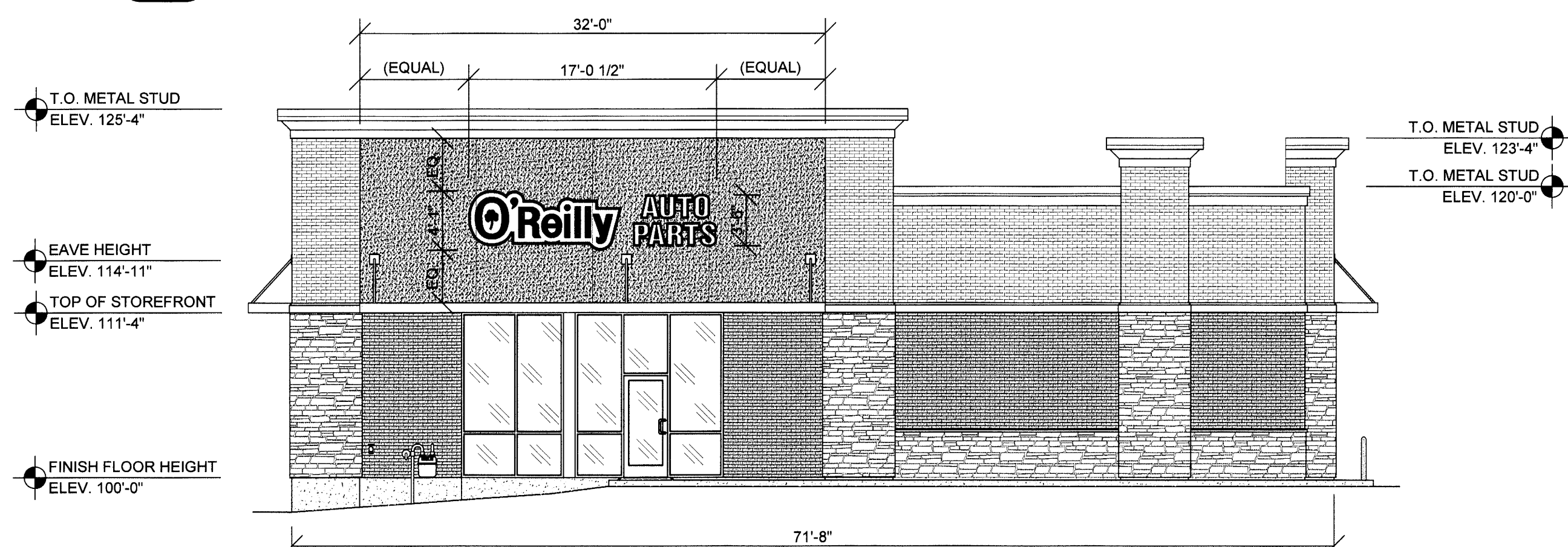
**2 RIGHT EXTERIOR ELEVATION**

SG2.1 SCALE: 1/8" = 1'-0"



**3 REAR EXTERIOR ELEVATION**

SG2.1 SCALE: 1/8" = 1'-0"



**4 LEFT EXTERIOR ELEVATION**

SG2.1 SCALE: 1/8" = 1'-0"

**GENERAL NOTES**

- (A) CONTACT OWNER'S OR TENANT'S DESIGNATED PROJECT ADMINISTRATOR FOR QUESTIONS OR CLARIFICATIONS.
- (B) BUILDING PERMANENT SIGNAGE OWNER FURNISHED AND INSTALLED. (REFER TO SCOPE OF WORK SCHEDULE). SIGNAGE GRAPHICS PROVIDED FOR REFERENCE ONLY (N.I.C.) AND CONTRACTOR'S COORDINATION WITH SPECIFIC PROJECT CONSTRUCTION CONDITIONS. CONTRACTOR TO PROVIDE BACKING AND ROUGH-IN ELECTRICAL AS REQUIRED FOR INSTALLATION. REFER TO A2.1 FOR EXTERIOR BUILDING FINISH.
- (C) REQUIRED GOVERNMENTAL PERMITS FOR PERMANENT TYPE SIGNAGE TO BE PROVIDED BY OWNER OR OTHERS (N.I.C.).

DESIGN BY OTHERS FOR REFERENCE ONLY

TIMOTHY M. GUILLOT ARCHITECT

1736 East Sunshine, Suite 417  
Springfield, Missouri 65804

417.862.6558  
417.862.3265  
e-mail: architect@esteytschneider.com

PROJECT: NEW O'REILLY AUTO PARTS STORE  
STROH RD  
PARKER, CO #2

BUILDING EXTERIOR SIGNAGE

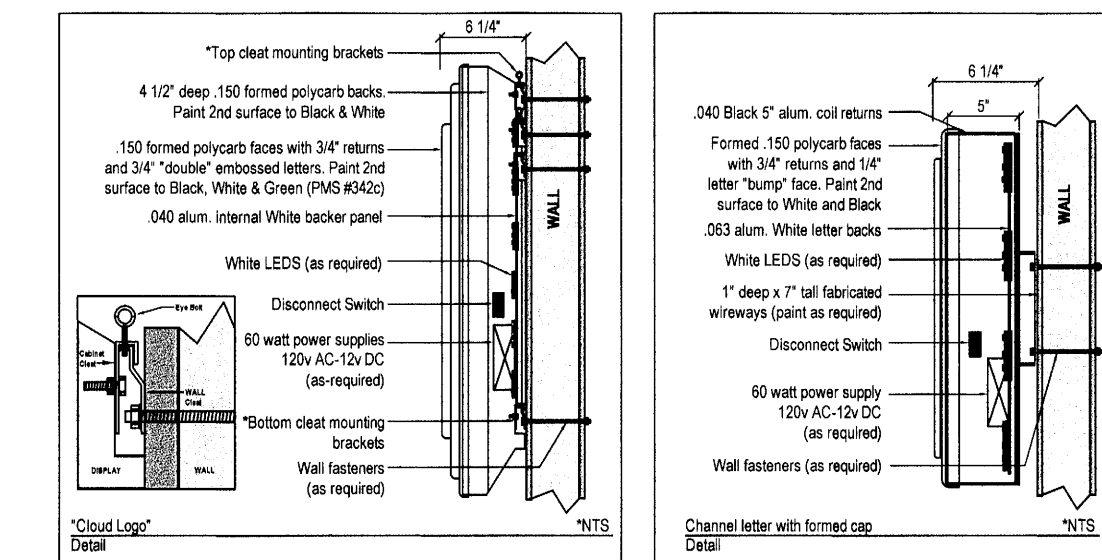
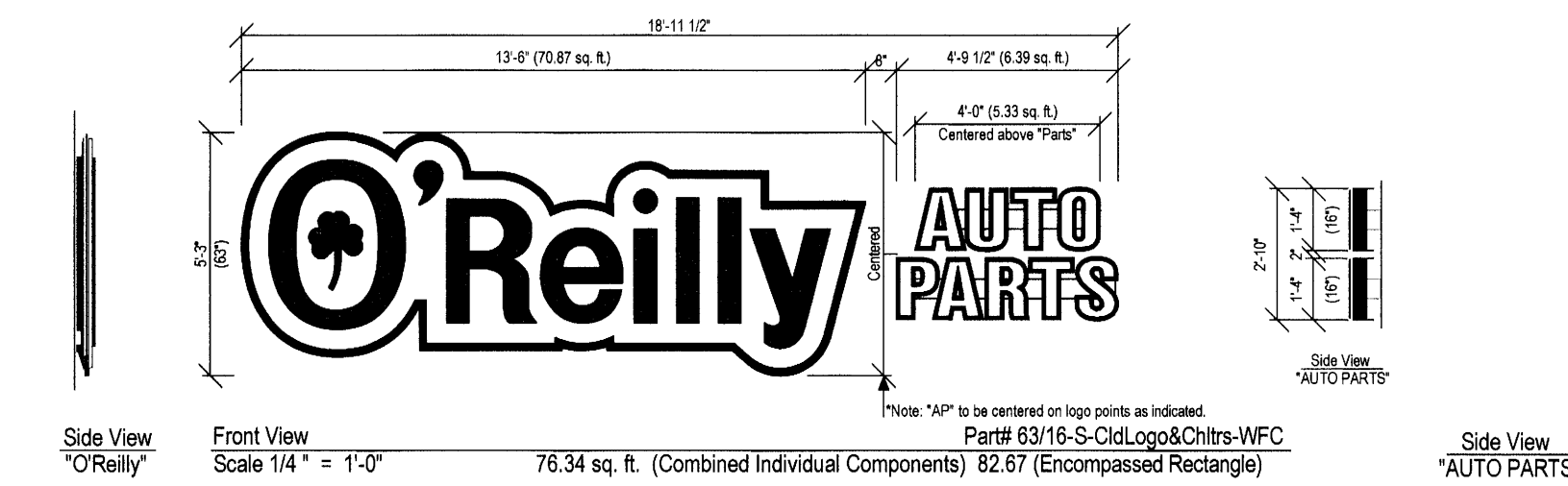
O'Reilly AUTO PARTS  
CORPORATE OFFICES  
233 SOUTH PATTERSON  
SPRINGFIELD, MISSOURI 65802  
(417) 862-2674 TELEPHONE

COMM # 4884

DATE: 2-14-25

REVISION

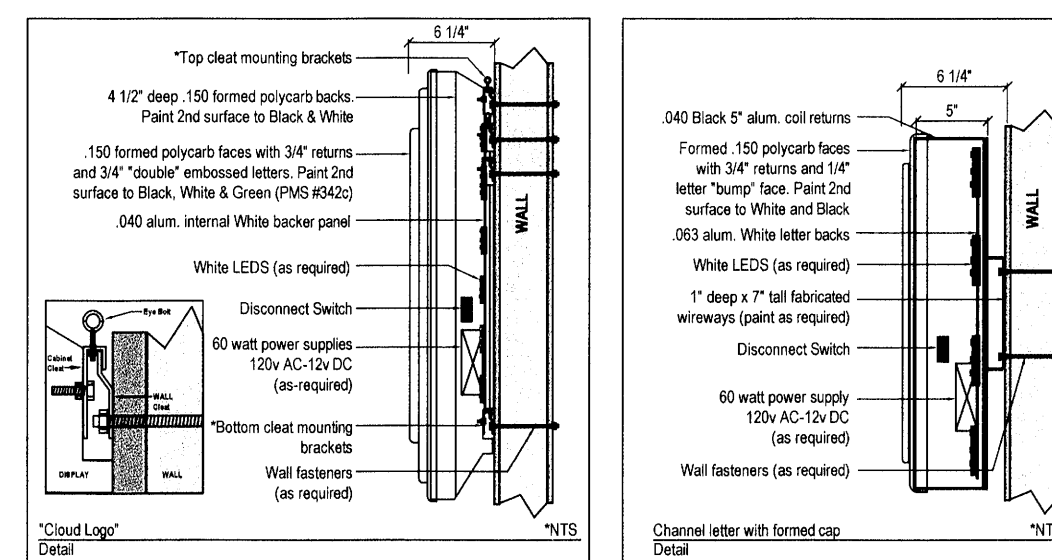
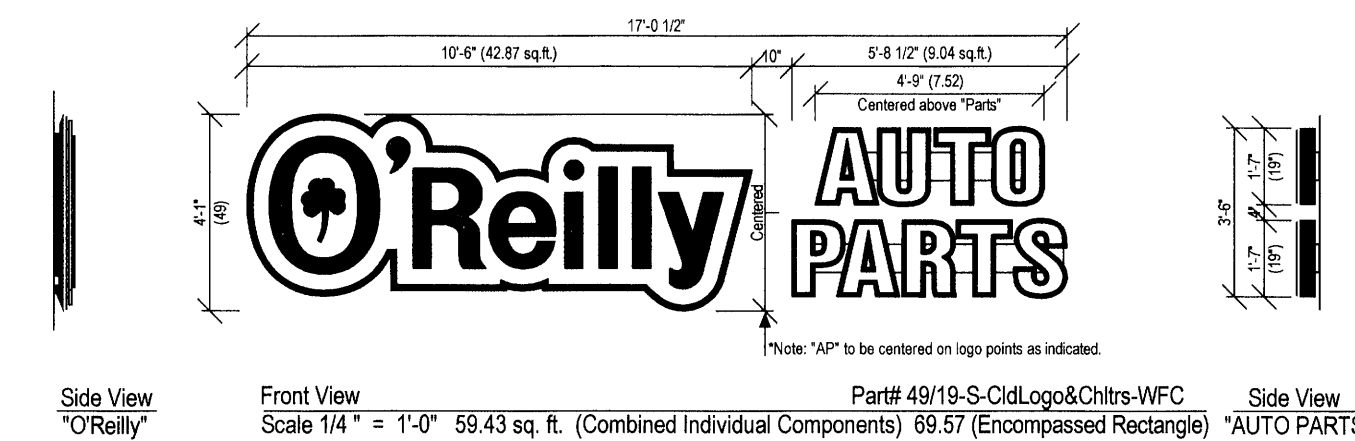
DATE:



Formed Cloud Logo with "AP" Formed Caps & Channel Returns  
Part# 63/29-S-CidLogo&Chtrs-WFC

**5 FRONT AND REAR WALL SIGN DETAILS**

SG2.1 SCALE: 1/4" = 1'-0"



Formed Cloud Logo with "AP" Formed Caps & Channel Returns  
Part# 49/19-S-CidLogo&Chtrs-WFC

**6 SIDE WALL SIGN DETAILS**

SG2.1 SCALE: 1/4" = 1'-0"