

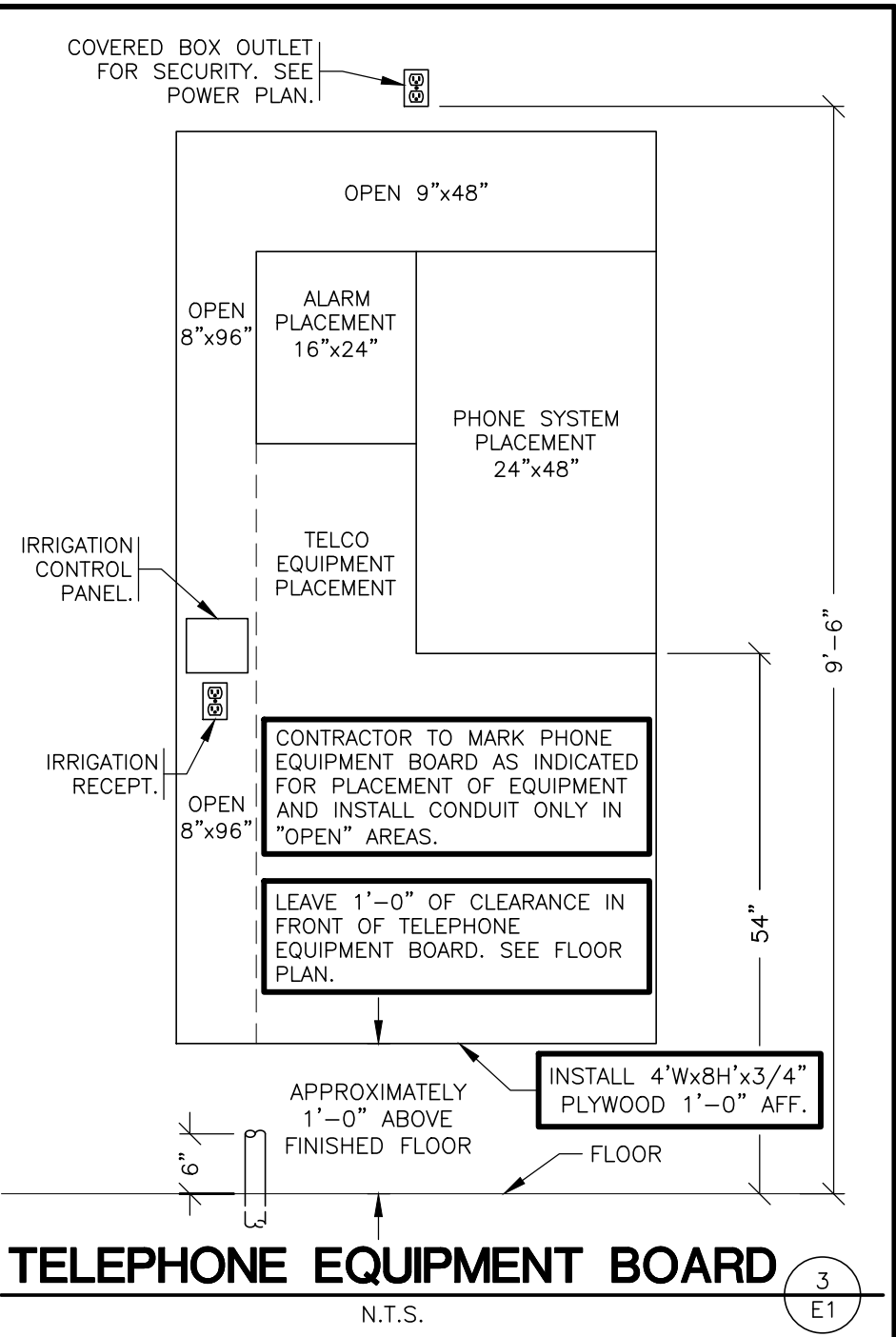
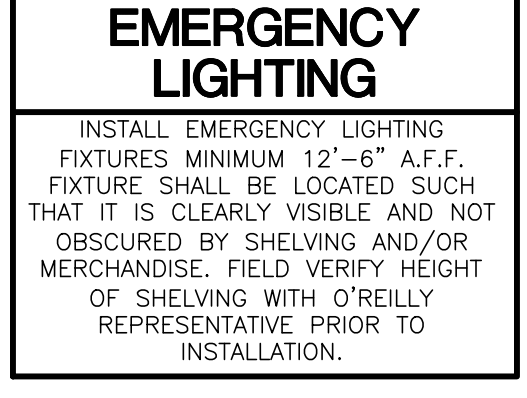
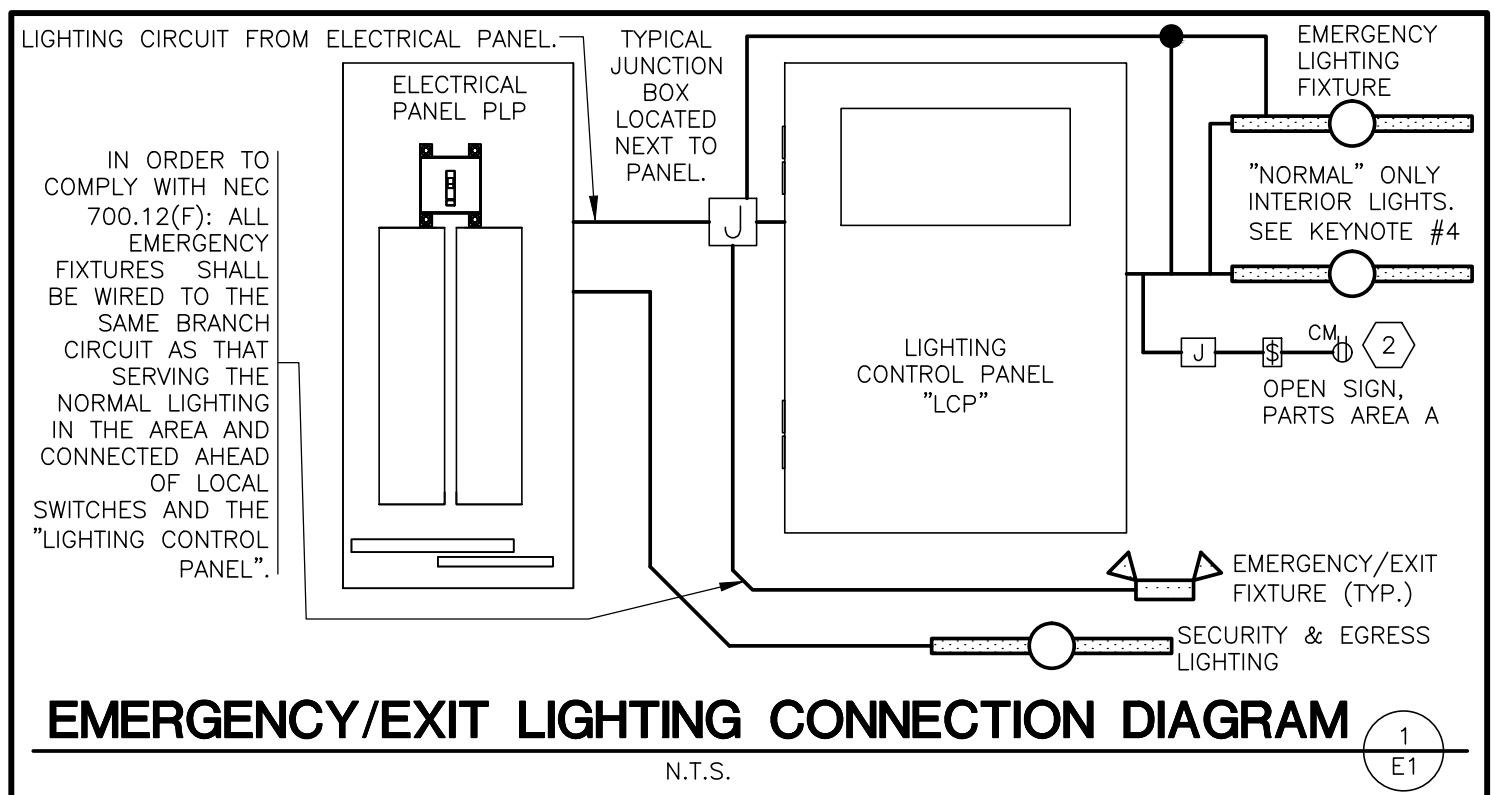
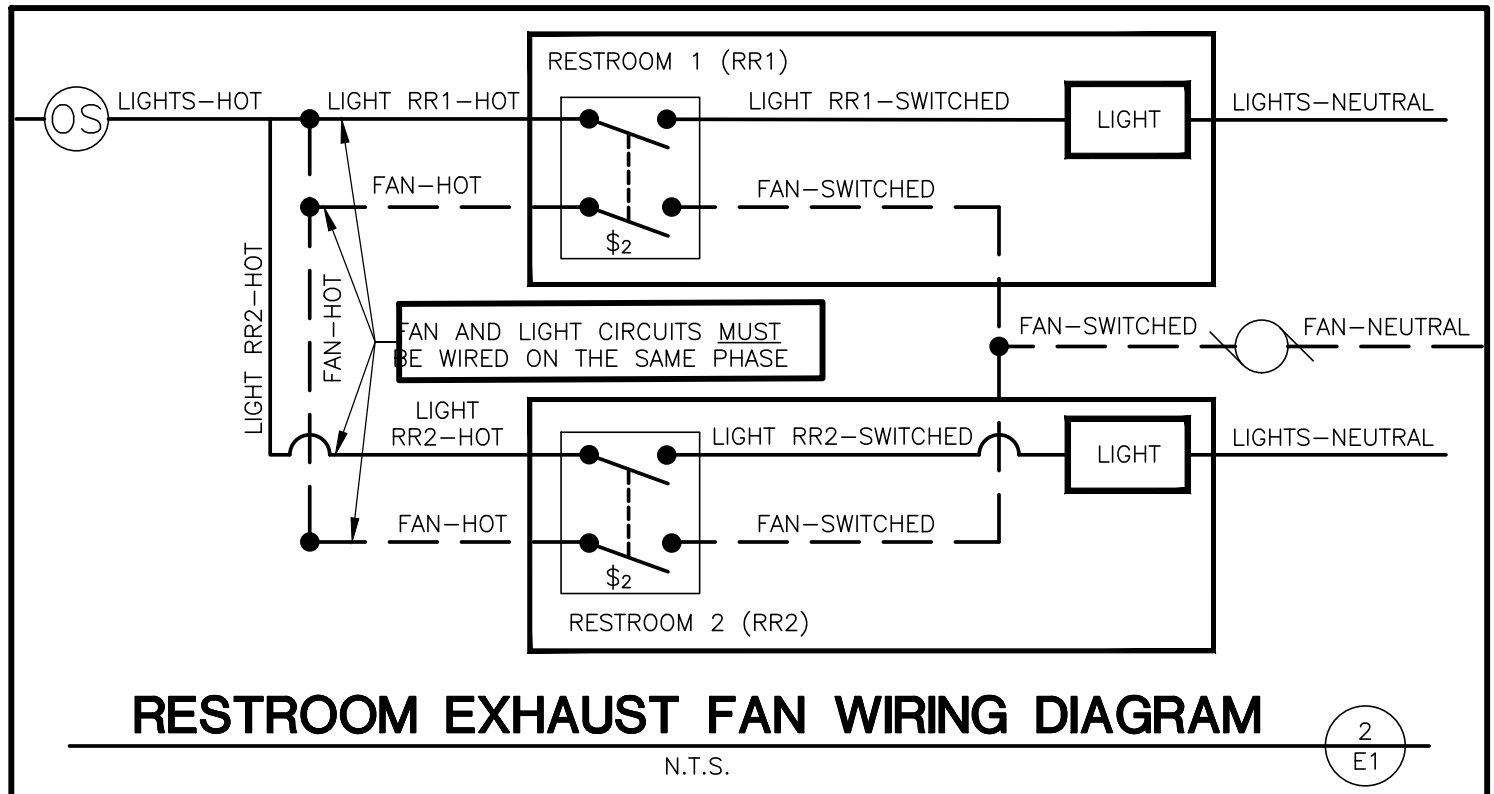
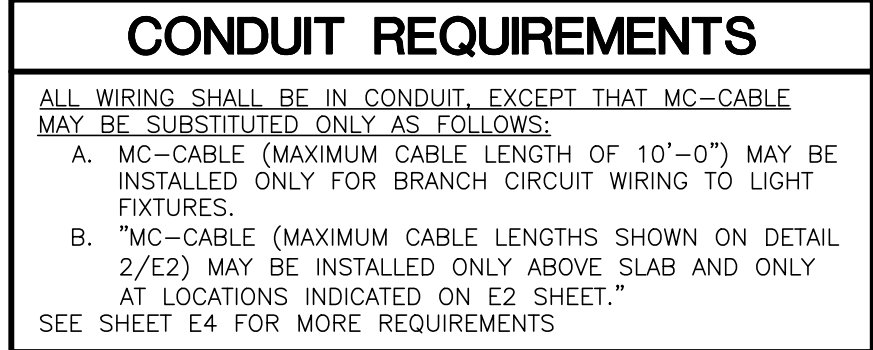
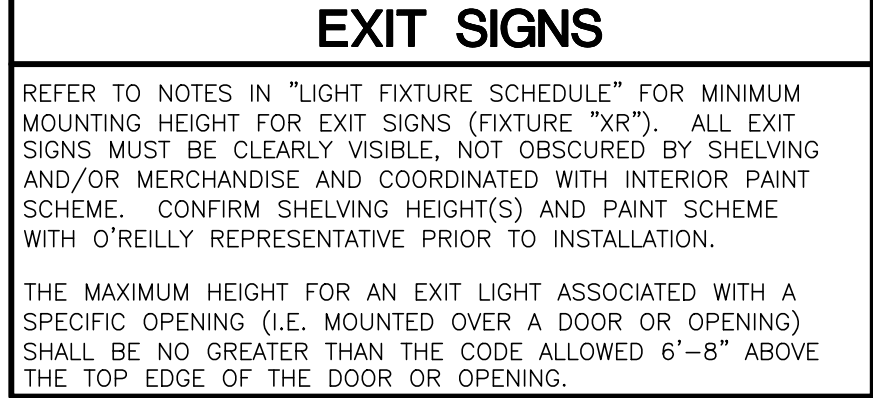
LIGHT FIXTURE SCHEDULE

ALL ITEMS LISTED ON THE "LIGHT FIXTURE SCHEDULE" WILL BE SUPPLIED BY THE OWNER (O'REILLY). ITEMS SHALL BE DIRECT ORDERED AND OR RELEASED FROM THE LISTED ELECTRICAL EQUIPMENT DISTRIBUTOR.

SOURCEONE SOLUTIONS
4341 GREEN ASH DRIVE
EARTH CITY, MO 63045

SOURCEONE SOLUTIONS O'REILLY TEAM
EMAIL: proreilly@sourceone-solutions.com
PHONE: 314-499-6400

MARK	MFR.	CATALOG NUMBER	SUPPLY VOLTAGE	FINISH	MOUNTING				LAMPS			WATTAGE	DESCRIPTION OF ACCESSORIES	NOTES	FIXTURE QUANTITY
					LAY-IN	RECESSED	SURFACE WALL	SURF. CEILING	OTHER	TYPE	QUANTITY				
LED DIMMABLE LIGHTS - ALL INDOOR LIGHT FIXTURES SHALL HAVE DISCONNECTING MEANS TO COMPLY WITH NEC 410.130(G)															
A	ILP	DSC8-6LHE-U-40-FCLGR-OTI-ORY NO SUBSTITUTIONS	120	WHITE			X			FLUORESCENT		40	GRID HANGER (2 PER FIXTURE)	GRID HANGER (OAPGH) (CEILING GRID ONLY). 0-10 VOLT DIMMING DRIVER STANDARD.	49
B	ILP	DSC4-3LHE-U-40-FCLGR-OTI-ORY NO SUBSTITUTIONS	120	WHITE			X			FLUORESCENT		20	GRID HANGER (2 PER FIXTURE)	GRID HANGER (OAPGH) (CEILING GRID ONLY). 0-10 VOLT DIMMING DRIVER STANDARD. OMIT GRID HANGER @ HARD CEILING	12
C	ILP	DSC8-6LHE-U-40-FCLGR-OTI-ORY NO SUBSTITUTIONS	120	WHITE				X		FLUORESCENT		40	CHS5 - 5' CHAIN HANGING KIT (1 KIT HAS 2 CHAINS & 2 V HOOKS)	HANG TOP OF FIXTURES AT 12" A.F.F. WITH CHAIN HANGERS & 2 V HOOKS. VERIFY LENGTH OF CHAIN REQUIRED. 0-10 VOLT DIMMING, DRIVER STANDARD	35
D	ILP	DSC4-3LHE-U-40-FCLGR-OTI-ORY NO SUBSTITUTIONS	120	WHITE				X		FLUORESCENT		20	CHS5 - 5' CHAIN HANGING KIT (1 KIT HAS 2 CHAINS & 2 V HOOKS)	HANG TOP OF FIXTURES AT 12" A.F.F. WITH CHAIN HANGERS & 2 V HOOKS. VERIFY LENGTH OF CHAIN REQUIRED. 0-10 VOLT DIMMING, DRIVER STANDARD	1
LED DIMMABLE LIGHTS (EMERGENCY BATTERY PACK)															
AE	ILP	DSC8-6LHE-U-40-FCLGR-EM10-OTI-ORY NO SUBSTITUTIONS	120	WHITE			X			FLUORESCENT		40	GRID HANGER (2 PER FIXTURE)	GRID HANGER (OAPGH) (CEILING GRID ONLY). 0-10 VOLT DIMMING DRIVER STANDARD. 10W EMERGENCY BATTERY PACK INSTALLED (EM10). INSTALL UNSWITCHED POWER SOURCE TO EACH FIXTURE. SEE DIAGRAM 1/E1	3
CE	ILP	DSC8-6LHE-U-40-FCLGR-EM10-OTI-ORY NO SUBSTITUTIONS	120	WHITE			X			FLUORESCENT		40	CHS5 - 5' CHAIN HANGING KIT (1 KIT HAS 2 CHAINS & 2 V HOOKS)	HANG TOP OF FIXTURES AT 12" A.F.F. WITH CHAIN HANGERS & 2 V HOOKS. VERIFY LENGTH OF CHAIN REQUIRED. 0-10 VOLT DIMMING, DRIVER STANDARD. 10W EMERGENCY BATTERY PACK INSTALLED (EM10). INSTALL UNSWITCHED POWER SOURCE TO EACH FIXTURE. SEE DIAGRAM 1/E1	6
COMBINATION EXIT/EMERGENCY LIGHTS, EMERGENCY LIGHTS & EXTERIOR EMERGENCY REMOTE HEADS															
XR	HUBBELL LIGHTING	CCRRC	120	WHITE		X	X			FLUORESCENT		2	LED EXIT + (2) 3.6V	UNIVERSAL (WALL/CLG.) SINGLE PR DOUBLE FACE	7
RH2	HUBBELL	CORD	3V DC	WHITE		X		X		FLUORESCENT		2	LED REMOTE HEAD	POWERED BY EMERGENCY "XR" FIXTURE.	3
LED EXTERIOR LIGHTS															
L	LSI	LAD6 41 LED 40 75 UE TR6R SFHAZ	120	CLEAR	X			X		FLUORESCENT		1	---	RECESSED CAN.	1
WB-	SEE "SP1" SHEET FOR EXTERIOR LIGHTING WALL SCONCE FIXTURE SCHEDULE														
P-	SEE "SP1" SHEET FOR EXTERIOR LIGHTING POLE LIGHT FIXTURE SCHEDULE														
FIXTURE QUANTITY TO BE VERIFIED WITH LIGHTING PLAN QUANTITY															



- LIGHTING - KEYNOTES**
- MOUNT J-BOX INSIDE BUILDING & FLEX CONDUIT THRU WALL FOR POWER SUPPLY TO ILLUMINATED SIGN. EXACT LOCATIONS OF PENETRATIONS SHALL BE COORDINATED WITH SIGN COMPANY. PENETRATIONS SHALL BE BEHIND SIGNAGE. WATERPROOF W/ ELASTOMERIC POLYURETHANE (NO EXCEPTIONS) EQUAL TO "VULKEM" 116. WIRE TO SIGN WITH 15' OF WIRING "WHIP" (SHALL BE FLEX OR TYPE MC CABLE) & MAKE FINAL ELECTRICAL CONNECTIONS TO THE SIGN CABINETS. TYPICAL.
 - NOT USED.
 - SEE "E" PANEL TRANSFER SWITCH SCHEDULE FOR POSITION OF CIRCUIT WIRES THROUGH TRANSFER SWITCH.
 - VIA LIGHTING CONTROL PANEL. SEE EM SHEET.
 - CONTRACTOR SHALL INSTALL 0-10V CONTROL WIRING TO ALL FIXTURES. SEE SHEET EM1.1.
 - SUSPEND 8'-0" A.F.F. THIS FIXTURE ONLY.
 - ROUTE THE OFFICE AND RESTROOM'S LIGHTING CIRCUIT THRU THE LOCAL OCCUPANCY SENSORS AND DIRECTLY TO THE CIRCUIT BREAKER. THESE FIXTURES SHALL NOT BE SWITCHED BY THE LIGHTING CONTROL PANEL. SEE "E" PANEL TRANSFER SWITCH SCHEDULE FOR POSITION OF CIRCUIT WIRES THROUGH TRANSFER SWITCH.
 - REFER TO ARCHITECTURAL ELEVATIONS SHEETS SHOWING DIMENSIONED LOCATIONS. TYPICAL ALL WALL SCONCES.
 - SECURITY & EGRESS FIXTURE TO BE AS CLOSE AS POSSIBLE BUT NOT OVER THE OVERHEAD DOOR WHEN OPEN.
 - ROUTE SECURITY & EGRESS LIGHTING CIRCUIT DIRECTLY TO THE ELECTRICAL PANEL.

AUTOMATIC LIGHTING CONTROL

COMPLIANCE WITH ENERGY CODE IS ACHIEVED BY:

- ONCE THE EMS HAS BEEN PROGRAMMED, THE INTERIOR AND EXTERIOR LIGHTS WILL TURN ON AND OFF USING THE FOLLOWING LOGIC: SEE EM SHEETS.
- INTERIOR WORK LIGHTS WILL TURN ON WITH FIRST MOTION IN THE STORE AND WILL TURN OFF 15 MINUTES AFTER LAST MOTION ONCE THE STORE IS CLOSED.
- INTERIOR SALES LIGHTS WILL TURN ON AT STORE OPENING AND TURN OFF 15 MINUTES AFTER STORE CLOSING.
- EXTERIOR SIGN LIGHTS WILL TURN ON WHEN ITS DARK ENOUGH OUTSIDE ANYTIME DURING STORE HOURS, AND WILL TURN OFF AT STORE CLOSING.
- EXTERIOR SITE LIGHTS WILL TURN ON WHEN IT IS DARK ENOUGH OUTSIDE ANYTIME DURING STORE HOURS, AND WILL TURN OFF LAST MOTION ONCE THE STORE IS CLOSED.

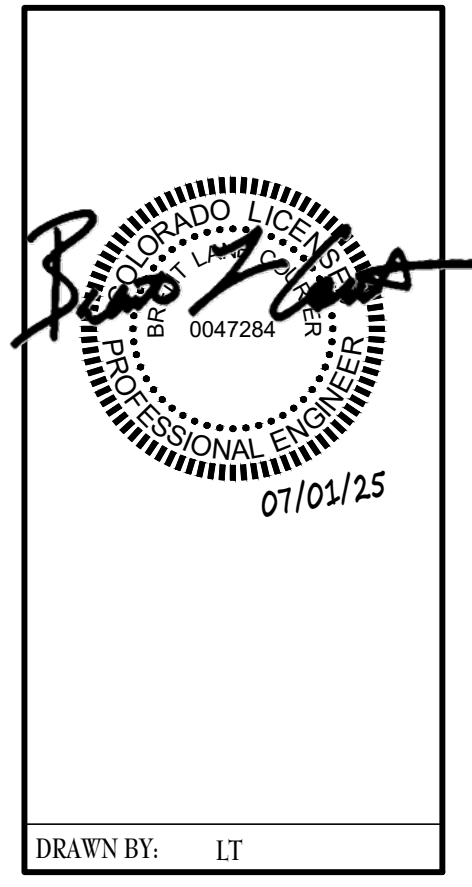
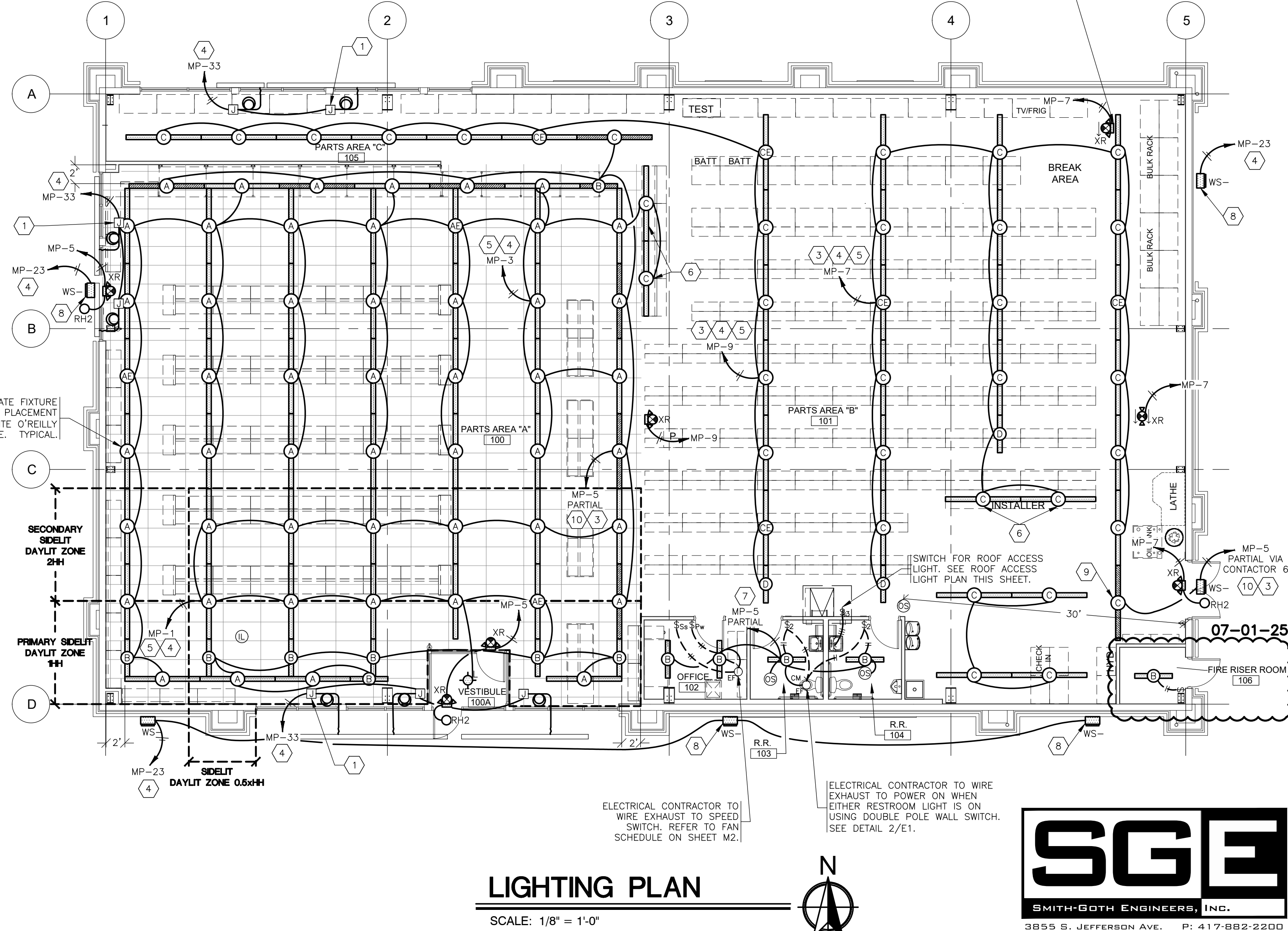
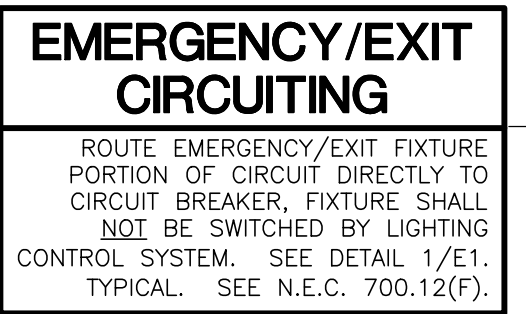
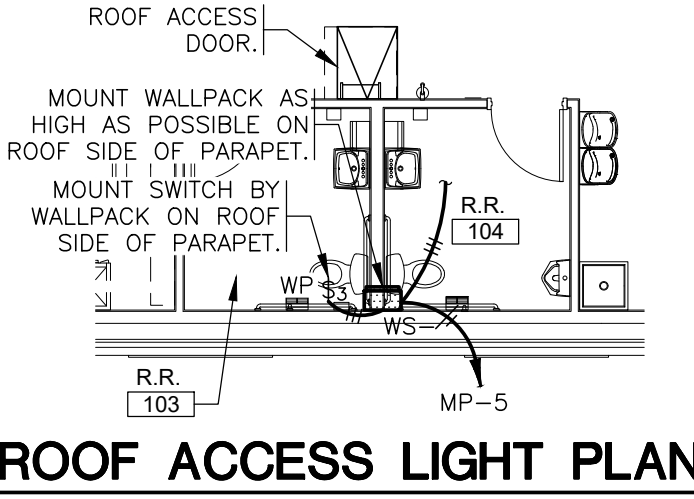
FOR NEW CONSTRUCTION LOCATIONS ONLY, THERE IS A TEMPORARY PROGRAM TO KEEP SIGN AND SITE LIGHTS ON UNTIL MIDNIGHT RATHER THAN THE TIMES INDICATED ABOVE. O'REILLY WILL DISABLE THIS PROGRAM ONE YEAR AFTER STORE OPENING.

2. RESTROOMS AND OFFICES: ALL LIGHTING IN THESE AREAS ARE CONTROLLED BY OCCUPANT-SENSING DEVICES.

INTERIOR LIGHTING ZONES

ALL INTERIOR LIGHTING WITHIN PARTS AREA "A" SHALL BE CONSIDERED "SALES" ZONE (ON ONLY WHEN STORE IS OPEN FOR BUSINESS).

ALL INTERIOR LIGHTING WITH PARTS AREA "B", PARTS AREA "C", RESTROOMS, OFFICE, AND BREAK AREA SHALL BE CONSIDERED "WORK" ZONES (ON WHENEVER THERE IS MOTION OR THE STORE IS OPEN).



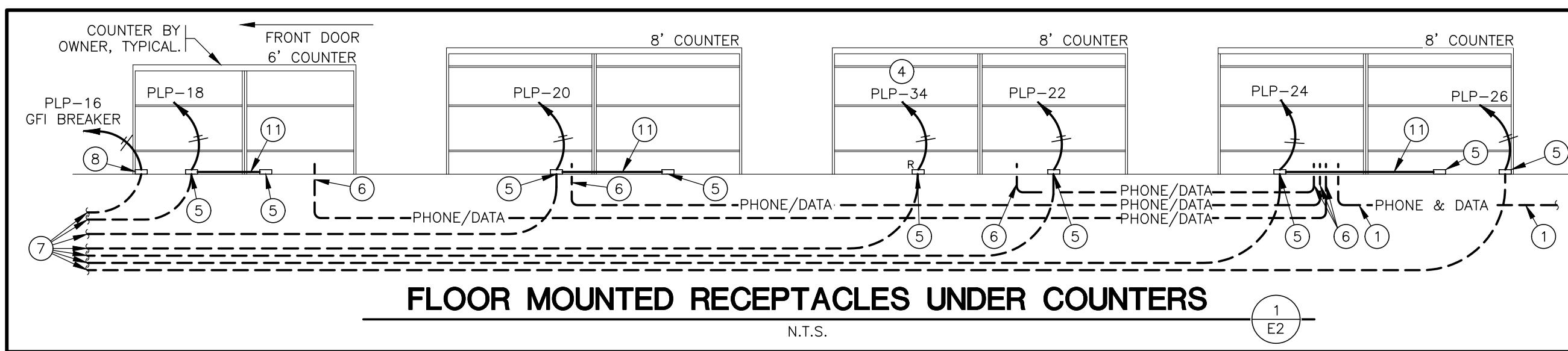
TIMOTHY M. GULLIOT
ARCHITECT
1736 East Sunshine, Suite 417
Springfield, Missouri 65804
e-mail: architect@esterlyschneider.com
417.862.0558
Fax: 417.862.3265

PROJECT:
NEW O'REILLY AUTO PARTS STORE
STROH RD
PARKER, CO #2
LIGHTING PLAN

O'Reilly AUTO PARTS
CORPORATE OFFICES
233 SOUTH PATTERSON
SPRINGFIELD, MISSOURI 65802
(417) 862-2674 TELEPHONE

COMM # 4884
DATE: 02-14-2025
REVISION
DATE: 07-01-25





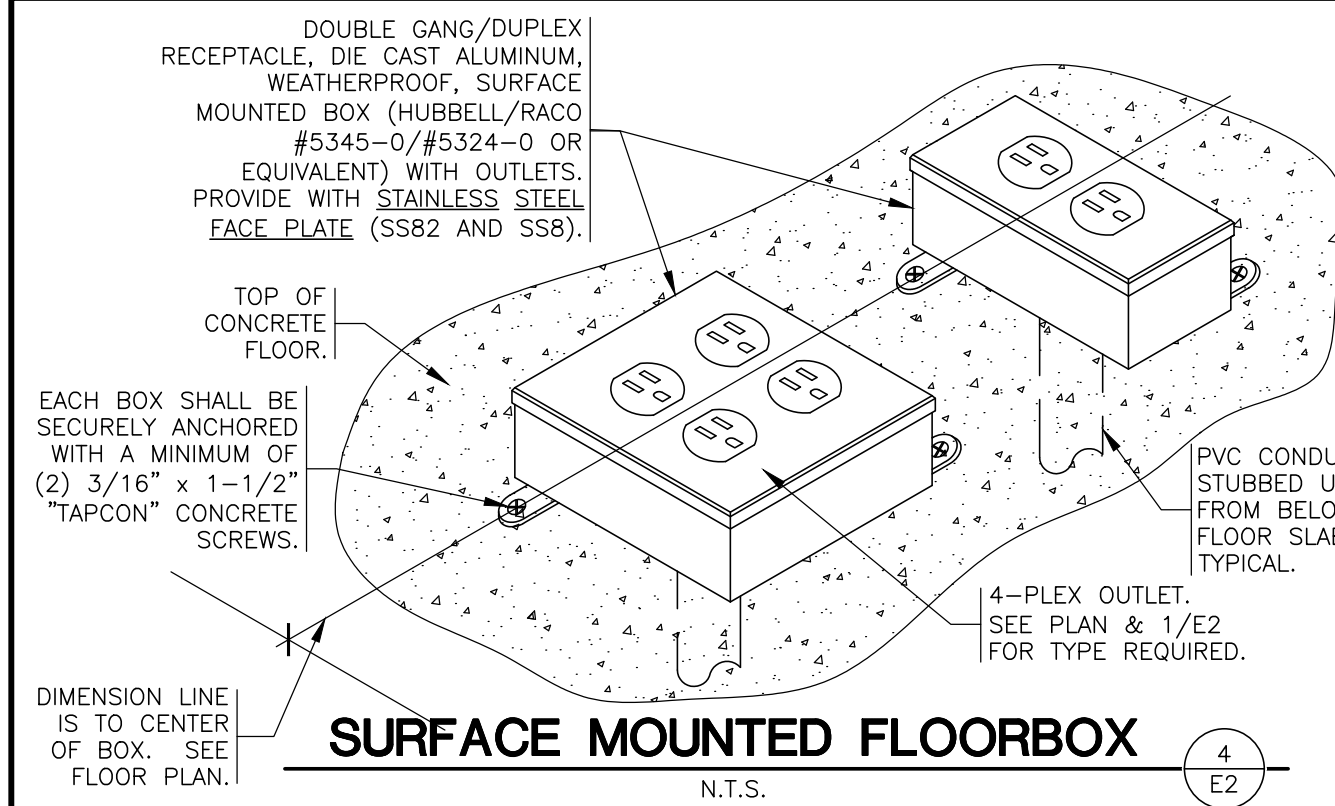
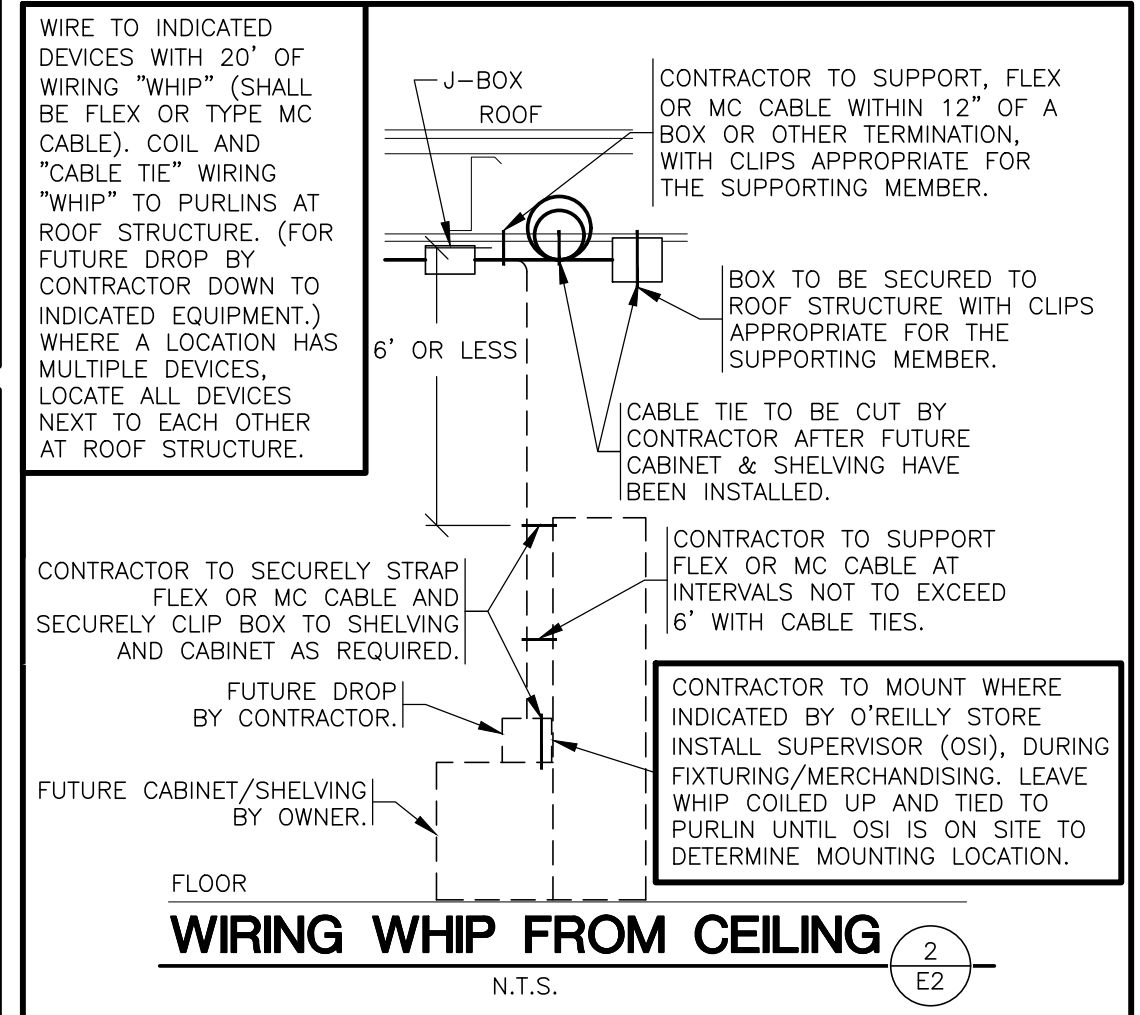
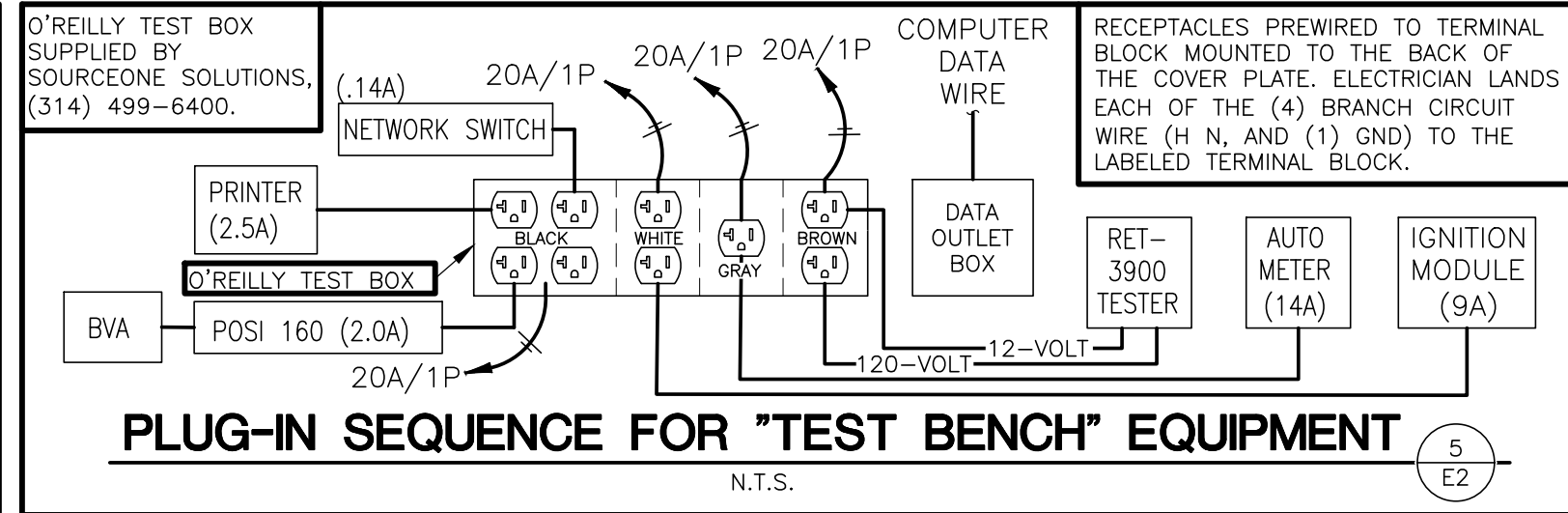
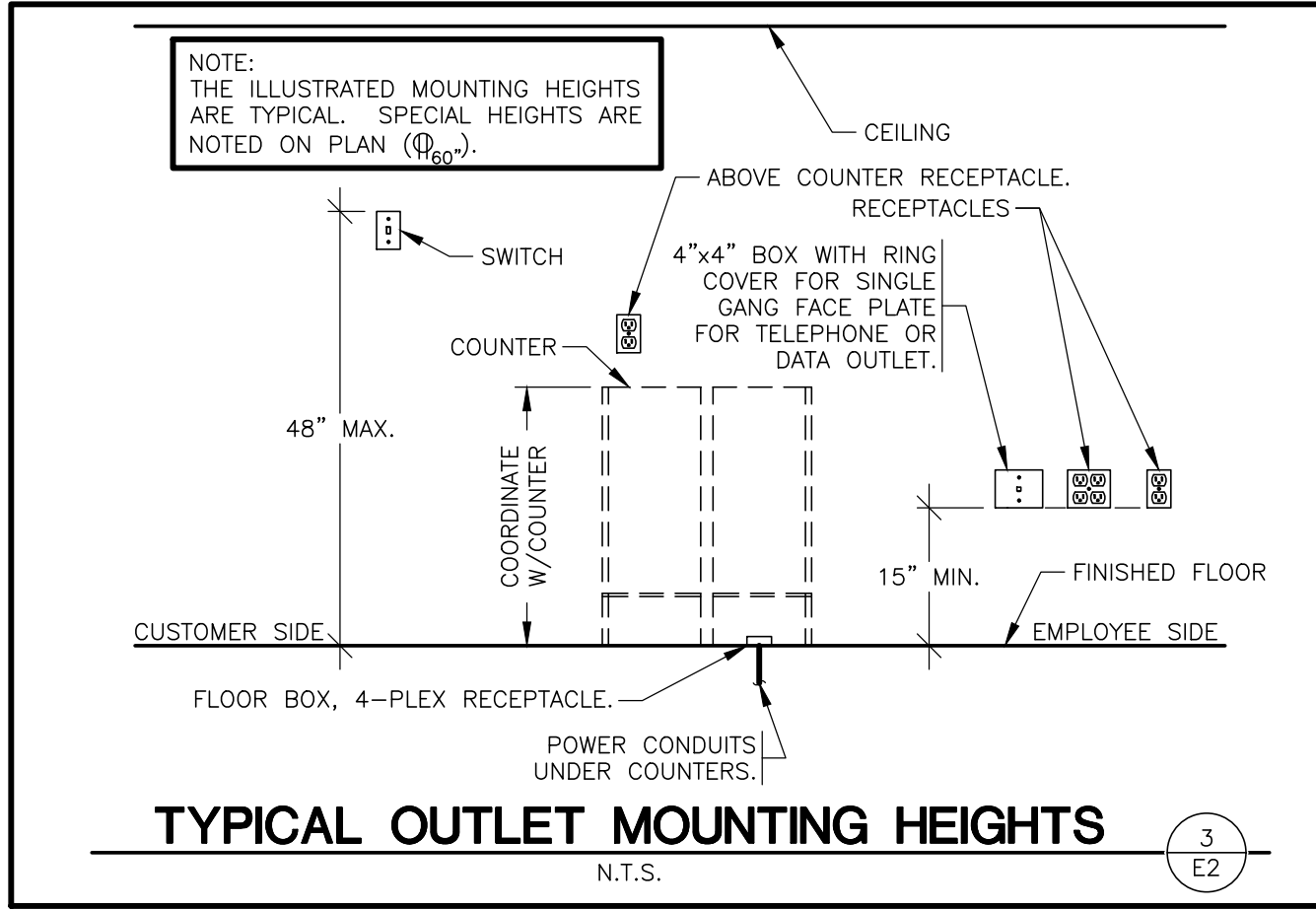
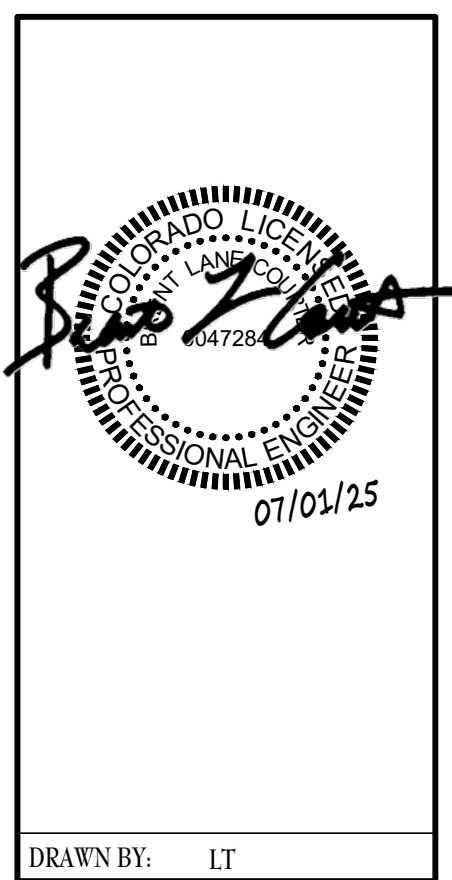
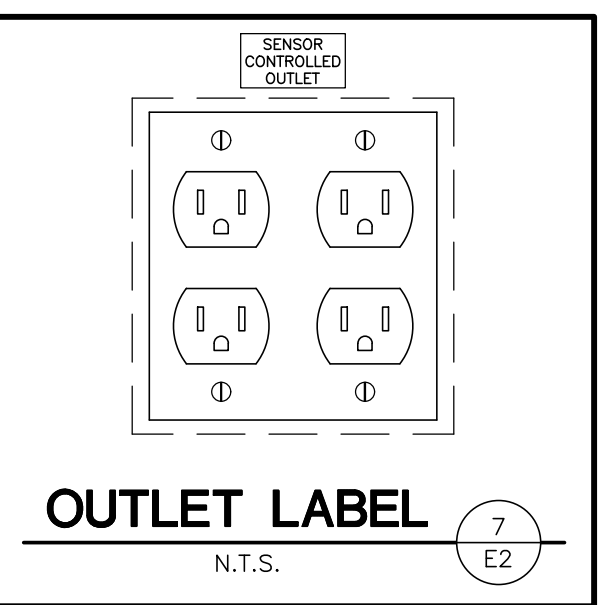
TELEPHONE & COMPUTER DATA SYSTEMS:

- ELECTRICAL CONTRACTOR SHALL PROVIDE AND INSTALL ALL TELEPHONE AND DATA CONDUITS.
- ELECTRICAL CONTRACTOR SHALL VACUUM OUT ALL CONDUITS TO REMOVE WATER.
- ELECTRICAL CONTRACTOR SHALL PROVIDE PULL-STRING IN EACH CONDUIT.
- OWNER SHALL PROVIDE AND INSTALL ALL TELEPHONE AND DATA WIRING.

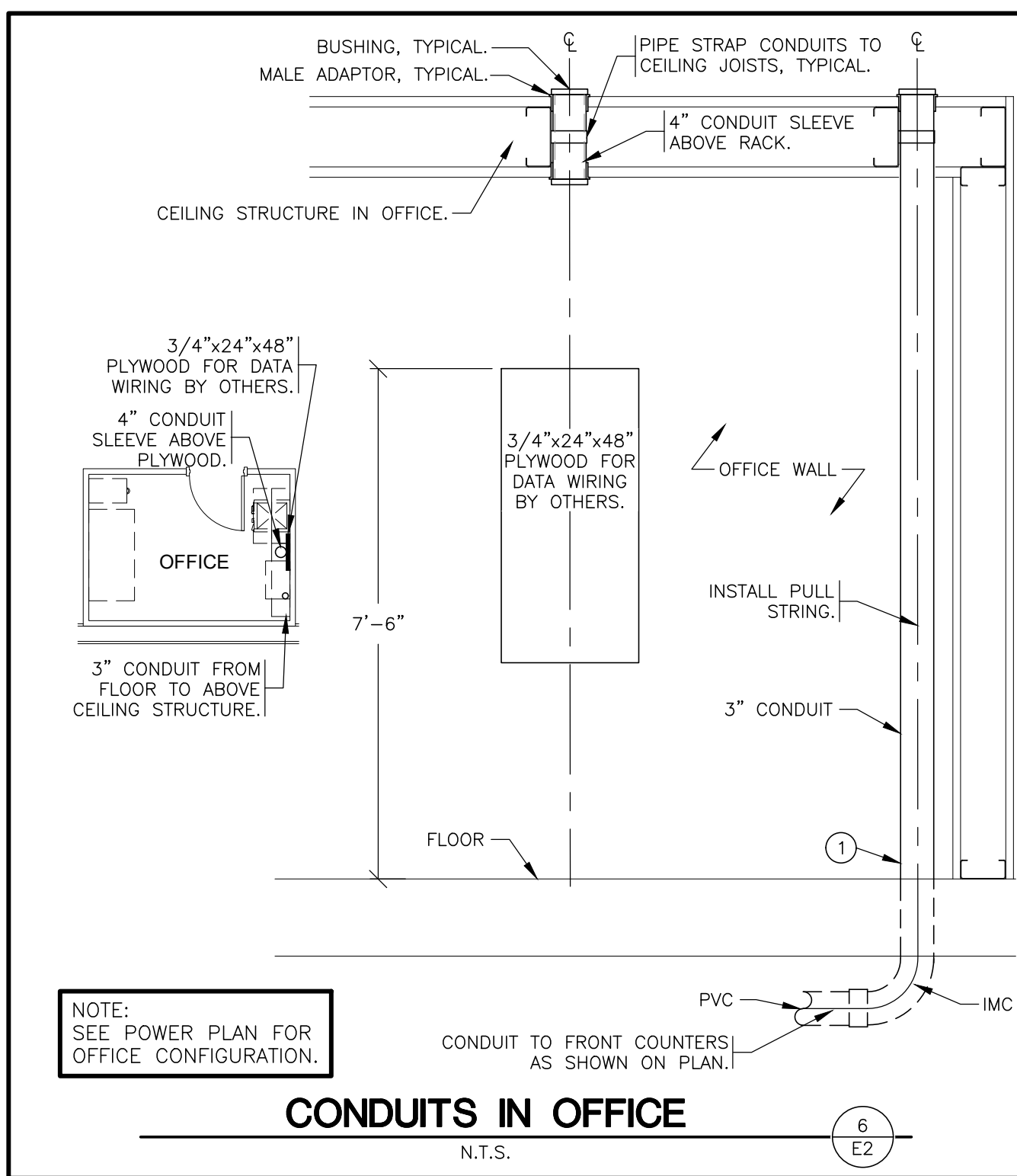
CONDUIT REQUIREMENTS

ALL WIRING SHALL BE IN CONDUIT, EXCEPT THAT MC-CABLE MAY BE SUBSTITUTED ONLY AS FOLLOWS:

- MC-CABLE (MAXIMUM CABLE LENGTH OF 10'-0") MAY BE INSTALLED ONLY FOR BRANCH CIRCUIT WIRING TO LIGHT FIXTURES.
- MC-CABLE (MAXIMUM CABLE LENGTHS SHOWN ON DETAIL 2/E2) MAY BE INSTALLED ONLY ABOVE SLAB AND ONLY AT LOCATIONS INDICATED ON E2 SHEET. SEE SHEET E4 FOR MORE REQUIREMENTS.

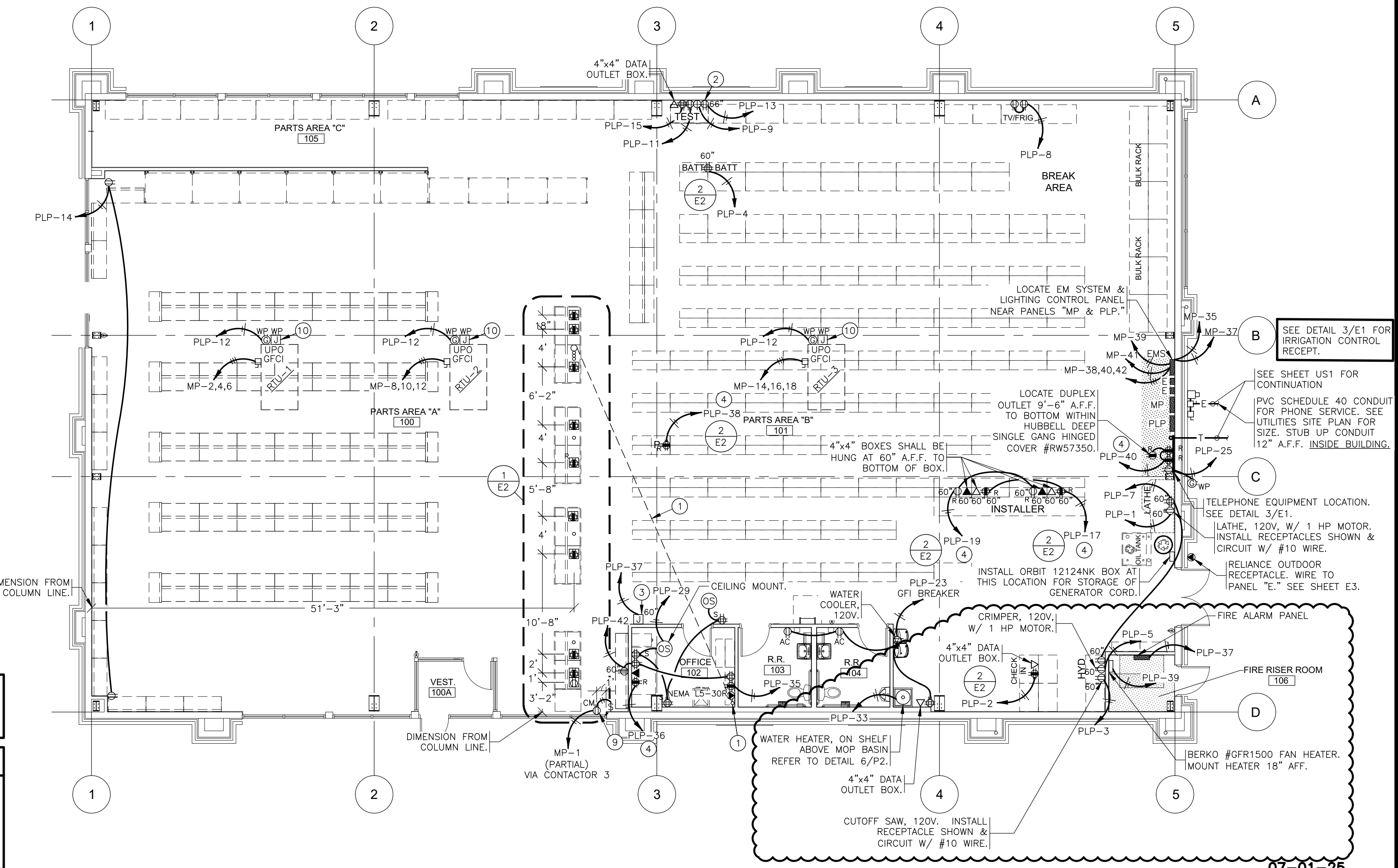


- POWER - KEYNOTES**
- 3" CONDUIT UNDERSLAB FROM COUNTER TO OFFICE FOR PHONE & DATA WIRING BY OWNER. STUB 3" CONDUIT TO A MINIMUM OF 9 FEET ABOVE FINISH FLOOR IN OFFICE. STUB 3" CONDUIT TO A MINIMUM OF 2-INCHES ABOVE FINISH FLOOR UNDER COUNTER. SEE DETAIL 1/E2 & 6/E2. INSTALL PULL STRING.
 - TEST OUTLET BOX, 120V. INSTALL (2) DUPLEX OUTLETS EACH ON THEIR OWN CIRCUIT, (1) SINGLE OUTLET ON ONE CIRCUIT, (1) QUADPLEX OUTLET ON ONE CIRCUIT & A COMPUTER DATA OUTLET BOX. ALL MOUNTED AT 66" ABOVE FLOOR. SEE DETAIL 5/E2.
 - J-BOX/CIRCUIT FOR FIRE ALARM SYSTEM INSTALLED IF, AND ONLY IF, FIRE ALARM SYSTEM IS REQUIRED. CONTRACTOR SHALL CONFIRM THAT SYSTEM IS REQUIRED PRIOR TO ROUGH-IN. THE BREAKER SHALL BE PAINTED RED AND LOCKABLE.
 - ROUTE CIRCUIT THROUGH "E" PANEL TRANSFER SWITCH. SEE "E" PANEL TRANSFER SWITCH SCHEDULE ON SHEETS E3.
 - FLOOR 4-PLEX ISOLATED GROUND RECEPTACLE. SEE DETAIL 4/E2.
 - STUB UP 2" CONDUITS (FOR PHONE/DATA) TO A MINIMUM OF 2-INCHES ABOVE FINISH FLOOR. NO BOXES REQUIRED. TYPICAL OF ALL COUNTERS. SEE DETAIL 1/E2.
 - 3/4" PVC CONDUIT UNDERSLAB. RUN ONE PVC CONDUIT FROM EACH FLOOR RECEPTACLE TO PANEL LOCATION.
 - FLOOR DUPLEX RECEPTACLE (FOR COKE MACHINE) SEE DETAIL 4/E2 SIMILAR.
 - MOUNT RECEPTACLE IN CEILING FOR "OPEN" SIGN. "OPEN" SIGN CAN ALSO BE OPERATED BY WALL SWITCH. SEE DETAIL 1/E1.
 - CONTRACTOR TO INSTALL J-BOX, CONDUIT, AND PULL STRING FOR FIRE ALARM. MOUNT J-BOX BELOW OPTIONAL CONVENIENCE OUTLET LOCATION. REFERENCE SHEET M2.
 - MC CABLE BETWEEN COUNTER RECEPTACLES.



MARKING OF ELECTRICAL WORKING SPACE

IN FRONT OF ALL METER PANELS, SUB PANELS, TRANSFORMERS, AND DISCONNECTS, PROVIDE A WORKING SPACE IN FRONT, ON THE FLOOR. RECTANGLE, PAINT WITH CONTRASTING COLOR, 4-INCH BRUSH STROKES WITH DIAGONAL LINES INSIDE, WITH 6-INCH LETTERS, "NO STORAGE" BLOCKED IN, AND/OR LARGE STICKER SAYING THE SAME THING. 4'-0" DEPTH TYPICAL AT ALL LOCATIONS.



POWER PLAN
SCALE: 1/8" = 1'-0"



TIMOTHY M. GUILLOT
ARCHITECT
1736 East Sunshine, Suite 417
Springfield, Missouri 65804
e-mail: architect@esteytschneider.com
417.862.0558
417.862.3265

PROJECT:
NEW O'REILLY AUTO PARTS STORE
STROH RD
PARKER, CO #2
POWER PLAN

O'Reilly AUTO PARTS
CORPORATE OFFICES
233 SOUTH PATTERSON
SPRINGFIELD, MISSOURI 65804
(417) 862-2674 TELEPHONE

COMM # 4884
DATE: 02-14-2025
REVISION DATE: 05-02-25
07-01-25

ALL PANELBOARDS, TRANSFORMERS, TRANSFER SWITCH KIT, ENERGY MANAGEMENT SYSTEM AND DISCONNECTS WILL BE SUPPLIED BY THE OWNER (O'REILLY). ELECTRICAL GEAR SHALL BE DIRECT ORDERED AND/OR RELEASED FROM THE LISTED ELECTRICAL EQUIPMENT DISTRIBUTOR. SEE "ELECTRIC SERVICE RESPONSIBILITIES" FOR ADDITIONAL CLARIFICATION.

SOURCEONE SOLUTIONS
4341 GREEN ASH DRIVE
EARTH CITY, MO 63045

SOURCEONE SOLUTIONS O'REILLY TEAM
EMAIL: ncoreilly@sourceonesolutions.com
PHONE: 314-499-6400

MP PANELBOARD SCHEDULE																							
MAINS: 400A MAIN LUGS ONLY				VOLTAGE: 208				ACCESSORIES:															
TYPE: SIEMENS, P1X		PHASE: 3Φ, 4W		1. FEED THRU LUGS				2. EQUIPMENT GROUND BAR															
MOUNTING: SURFACE		WIDTH: 20		3. ISOLATED GROUND BAR				4. * MUST BE "BLH" 50 TO 100 AMP BREAKER															
SCCR: 22K AIC		SPACE(S): 42		5. * SIEMENS, #ECP1D1, LOCKABLE CLIPS																			
CKT	CKT BRK	WIRE	LOAD DESCRIPTION	(KVA)	A(KVA)	B(KVA)	C(KVA)	(KVA)	LOAD DESCRIPTION	WIRE	CKT BRK	CKT											
1	20A/1P	#12s	LIGHTING	0.83	3.61			2.78	RTU-1	#8s	+45A/3P	4											
3	20A/1P	#12s	LIGHTING	1.59		4.37		2.78				6											
5	20A/1P	#12s	LIGHTING/EXHAUST FAN	0.96			3.74	2.78				8											
7	20A/1P	#12s	LIGHTING	0.85	3.63			2.78	RTU-2	#8s	+45A/3P	10											
9	20A/1P	#12s	LIGHTING	0.87		3.65		2.78				12											
11			SPACE	0			2.78	2.78	RTU-3	#8s	+45A/3P	14											
13			SPACE	0	2.78			2.78				16											
15			SPACE	0		2.78		2.78				18											
17			SPACE	0			2.78	2.78				20											
19			SPACE	0	0.00			0				22											
21			SPACE	0		0.00		0				24											
23	20A/1P	#12s	BUILDING LIGHTING	0.18			0.18	0				26											
25	20A/1P	#12s	SITE LIGHTING	0.14	0.14			0				28											
27	20A/1P	#12s	SITE LIGHTING	0.27		0.27		0				30											
29	20A/1P	#12s	SITE SIGN	1.30			1.30	0				32											
31	20A/1P	#12s	SITE SIGN	1.30	1.30			0				34											
33	*20A/1P	#12s	LED SIGN BUILDING	1.20		1.20		0				36											
35	20A/1P	#12s	DIMMING CONTROL PANEL	0.03			0.03	0				38											
37	20A/1P	#12s	LIGHTING CONTROL PANEL	0.03	0.06			0.03				40											
39	20A/1P	#12s	TOUCHSCREEN PANEL	0.03		0.06		0.03	ENERGY METER	#12s	20A/3P	42											
41	20A/1P	#12s	SCREAM LOGIC PANEL	0.60			0.63	0.03				44											
TOTAL PHASE A (KVA)				TOTAL PHASE B (KVA)				TOTAL PHASE C (KVA)				TOTAL CONNECTED LOAD (KVA)				TOTAL AMPS							
11.52				12.33				11.44				35.29				97.96							
LIGHTING				5.10				EXTERIOR LIGHTING				4.39				TOTAL LIGHTING				9.49			
HVAC				25.02				RECEPTACLES				15.69				MISCELLANEOUS				14.58			
WATER HEATER				1.65				TOTAL CONNECT AMPS =				186.56											

PLP PANELBOARD SCHEDULE																							
MAINS: 400A MAIN LUGS ONLY				VOLTAGE: 208				ACCESSORIES:															
TYPE: SIEMENS, P1X		PHASE: 3Φ, 4W		1. EQUIPMENT GROUND BAR				2. ISOLATED GROUND BAR															
MOUNTING: SURFACE		WIDTH: 20		3. * SIEMENS, #ECP1D1, LOCKABLE CLIPS, CKT. #33 & #37				4. ** SIEMENS, #BF120AH, GFI BREAKER CKT. #16 & #23															
SCCR: 22K AIC		SPACE(S): 42																					
CKT	CKT BRK	WIRE	LOAD DESCRIPTION	(KVA)	A(KVA)	B(KVA)	C(KVA)	(KVA)	LOAD DESCRIPTION	WIRE	CKT BRK	CKT											
1	20A/1P	#10s	LATHE	1.70	2.20			0.50	CHECK IN RECEPT. (I.G.)	#12s	20A/1P	2											
3	20A/1P	#10s	CUTOFF SAW	1.73		1.91		0.18	BATTERY RACK RECEPT.	#10s	20A/1P	4											
5	20A/1P	#12s	CRIMPER	1.77			1.95	0.18	BATTERY RACK RECEPT.	#10s	20A/1P	6											
7	20A/1P	#12s	RECEPTACLES	0.54	0.90			0.26	BREAK AREA RECEPTS.	#12s	20A/1P	8											
9	20A/1P	#10s	STARTER/ALT. TESTER	1.68		1.68		0	SPACE			10											
11	20A/1P	#10s	STARTER/ALT. TESTER	1.68			2.22	0.54	RTU RECEPTACLES	#12s	20A/1P	12											
13	20A/1P	#10s	STARTER/ALT. TESTER	1.64	2.00			0.36	RECEPTACLES	#12s	20A/1P	14											
15	20A/1P	#12s	RECEPTACLES	0.36		2.11		1.75	COKE MACHINE (ONLY)	#12s	**20A/1P	16											
17	20A/1P	#12s	ISOLATED GRD. RECEPTS.	0.72			1.44	0.72	ISOLATED GRD. RECEPTS.	#12s	20A/1P	18											
19	20A/1P	#12s	RECEPTACLES	0.36	1.08			0.72	ISOLATED GRD. RECEPTS.	#12s	20A/1P	20											
21	30A/1P	#10s	BATTERY BACKUP (I.G.)	3.00		3.36		0.36	ISOLATED GRD. RECEPTS.	#12s	20A/1P	22											
23	**20A/1P	#12s	WATER COOLER RECEPT.	1.08			1.80	0.72	ISOLATED GRD. RECEPTS.	#12s	20A/1P	24											
25	20A/1P	#12s	RECEPTS./IRRIGATION	1.00	1.36			0.36	ISOLATED GRD. RECEPTS.	#12s	20A/1P	26											
27			SPACE	0		0.00		0	SPACE			28											
29	20A/1P	#12s	RECEPTACLES (OS)	1.08			1.08	0	SPACE			30											
31			SPACE	0	0.00			0	SPACE			32											
33	*20A/1P	#12s	TANK WATER HEATER	1.65	2.01			0.36	ISOLATED GRD. RECEPTS.	#12s	20A/1P	34											
35	20A/1P	#12s	ISOLATED GRD. RECEPTS.	0.36			0.72	0.36	ISOLATED GRD. RECEPTS.	#12s	20A/1P	36											
37	*20A/1P	#12s	FIRE ALARM PANEL	0.30	0.80			0.50	PRINTER RECEPTACLE	#12s	20A/1P	38											
40	39	20A/1P	#12s	WALL HEATER	1.50		2.40	0.90	PHONE EQUIP./SECURITY	#12s	15A/1P	40											
41			SPACE	0		0.90	0.90	0	RECEPTACLES	#12s	20A/1P	42											
TOTAL PHASE A (KVA)				TOTAL PHASE B (KVA)				TOTAL PHASE C (KVA)				TOTAL CONNECTED LOAD (KVA)				TOTAL AMPS							
8.34				13.47				10.11				31.92				88.60							
LIGHTING				15.69				MISCELLANEOUS				14.58				WATER HEATER				1.65			
TOTAL CONNECT AMPS =				186.56																			

E TRANSFER SWITCH SCHEDULE				
POSITION	CIRCUIT BREAKER	LOAD DESCRIPTION	(KVA)	BREAKER
A	20A/1P	OFFICE COMPUTER	0.36	PLP-36
B	20A/1P	COUNTER RECEPTACLES	0.36	PLP-34
C	20A/1P	PRINTER	0.50	PLP-38
D	20A/1P	TELEPHONE EQUIPMENT/SECURITY	0.96	PLP-40
E	20A/1P	INSTALLER (ISOLATED GRD RECEPTACLE)	0.72	PLP-17
F	20A/1P	SPARE	0	-
G	20A/1P	SPARE	0	-
H	20A/1P	SPARE	0	-
I	20A/1P	SPARE	0	-
J	20A/1P	SPARE	0	-
GENERATOR (6,000 WATTS) RATED. MAX KVA=5.0 LOAD			2.90	TOTAL

E TRANSFER SWITCH SCHEDULE				
POSITION	CIRCUIT BREAKER	LOAD DESCRIPTION	(KVA)	BREAKER
A	20A/1P	INSTALLER (RECEPTACLE)	0.36	PLP-19
B	20A/1P	LIGHTING SECURITY/OFFICE/BATHROOMS(100% ON)	0.92	MP-5
C	20A/1P	LIGHTING HARD PARTS (DIMMED TO 90% ON)	0.77	MP-7
D	20A/1P	LIGHTING HARD PARTS (DIMMED TO 90% ON)	0.78	MP-9
E	20A/1P	SPARE	0	-
F	20A/1P	SPARE	0	-
G	20A/1P	SPARE	0	-
H	20A/1P	SPARE	0	-
I	20A/1P	SPARE	0	-
J	20A/1P	SPARE	0	-
GENERATOR (6,000 WATTS) RATED. MAX KVA=5.0 LOAD			2.83	TOTAL

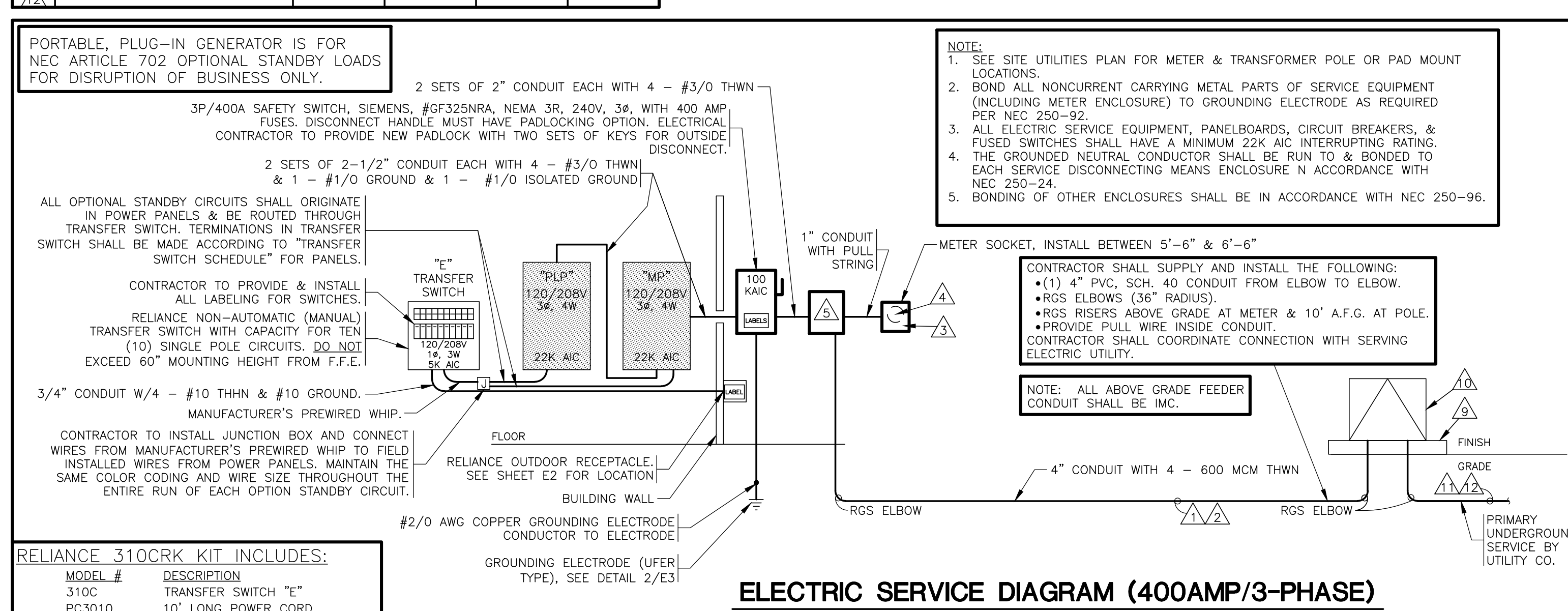
NOTE: ALL BRANCH CIRCUITS SHALL HAVE AN EQUIPMENT GROUNDING CONDUCTOR ROUTED WITH THE CIRCUIT CONDUCTORS. THIS MEANS ALL CONDUITS MUST HAVE A GREEN WIRE INSTALLED IN THEM AND SIZED IN ACCORDANCE WITH TABLE 250.122 OF THE N.E.C.

NOTE: DOT-HATCH REPRESENTS CIRCUITS THAT ARE ASSOCIATED WITH OPTIONAL STANDBY GENERATOR CONTROL.

WIRING & LABELING OF EXIT & EMERGENCY LIGHT CIRCUITS

- SEE DETAIL 1/E1 FOR WIRING OF EXIT & EMERGENCY LIGHTS ON THESE CIRCUITS.
- ALL EXIT & EMERGENCY LIGHTING CIRCUITS SHALL BE LABELED BY THE CONTRACTOR ON THE "PANEL DIRECTORY". (SPEC: NEPA 70.408.4 & 700.12.)

ELECTRIC SERVICE RESPONSIBILITIES				
SEE SITE PLAN FOR UTILITY COMPANY CONTACT.				
ITEM NO.	DESCRIPTION (IF APPLICABLE)	FURNISHED BY	INSTALLED BY	
		UTILITY CO.	CONTRACTOR	UTILITY CO.
△	SERVICE LATERAL		X	X
△	SERVICE LATERAL RACEWAY		X	X
△	METER BASE		X	X
△	METER	X		X
△	OH SERVICE RISER @ BUILDING			X
△	TRANSFORMER POLE			X
△	SERVICE RISER @ POLE			X
△	TRANSFORMER PAD		X	X
△	PAD MOUNT TRANSFORMER	X		X
△	PRIMARY SERVICE LATERAL	X		X
△	PRIMARY SERVICE RACEWAY	X		X



EQUIPMENT LABELS CHART						
EQUIPMENT	LABELS					
	SERVICE DISCONNECT	OPTIONAL STANDBY SOURCE	GENERATOR POWER INLET	SERIES RATING	AVAILABLE FAULT CURRENT	
DISCONNECT	X	X				
GENERATOR POWER INLET			X			
MP						
PLP						
E						
CT CABINET						

GENERATOR POWER INLET LABEL

PERMANENT LABEL SHALL BE 2 x 3 IN SIZE AND SHALL BE BLUE LETTERING ON A CONTRASTING BACKGROUND. LABEL TO BE PLACED 6 INCHES ABOVE GENERATOR RECEPTACLE.

WARNING:

FOR CONNECTION OF A NONSEPARATELY DERIVED (FLOATING NEUTRAL) SYSTEM ONLY (MAX. 6,000 WATT GENERATOR)

EXAMPLE OF LABELING ABOVE.

OPTIONAL STANDBY SOURCE LABEL

PERMANENT LABEL SHALL BE 2 x 3 IN SIZE AND SHALL BE BLUE LETTERING ON A CONTRASTING BACKGROUND. LABEL TO BE PLACED ON DISCONNECT DOOR.

CAUTION

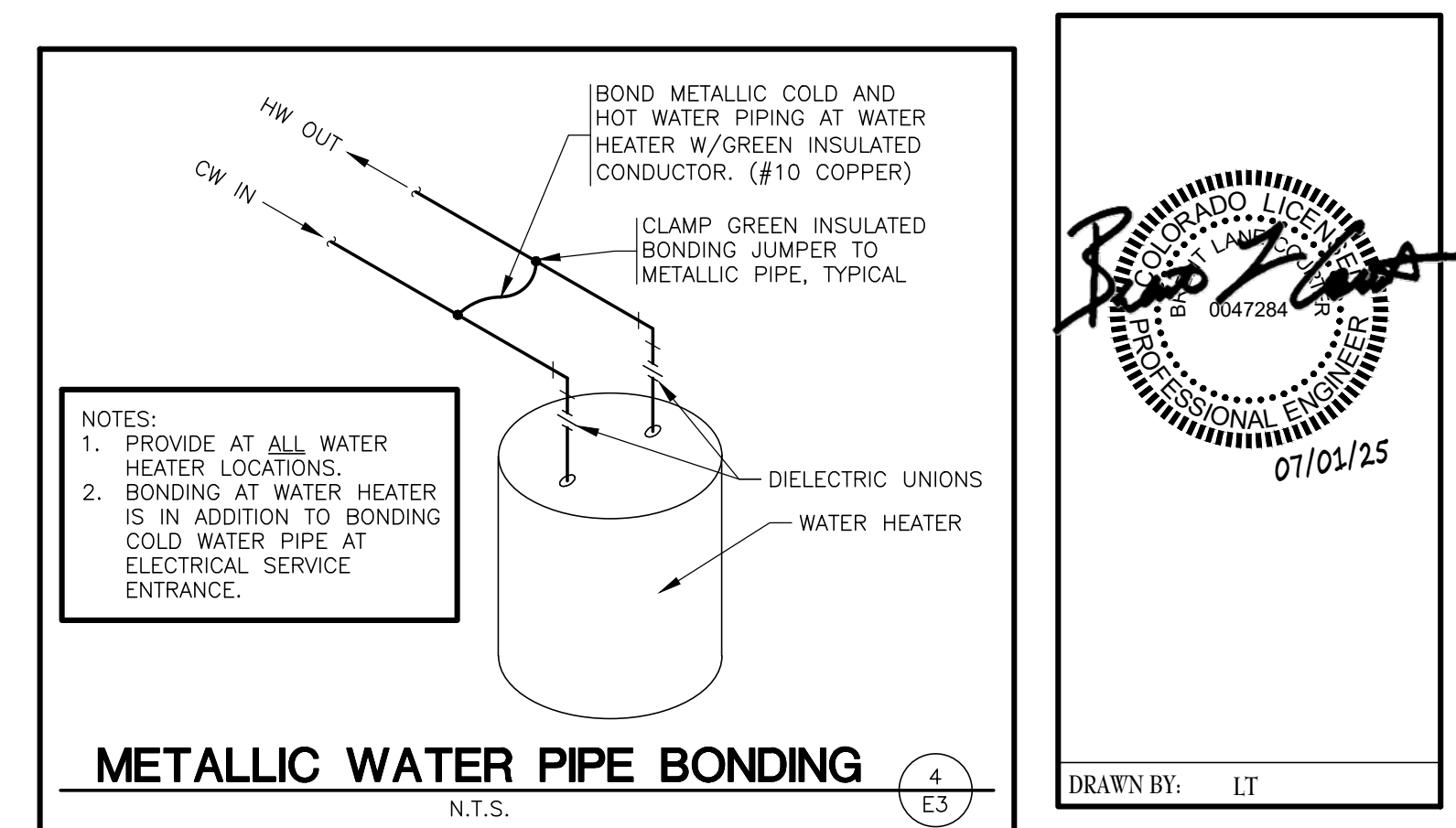
TWO SOURCES OF SUPPLY

STANDBY POWER SOURCE: PORTABLE 6kw GENERATOR LOCATION: OVERHEAD DOOR.

EXAMPLE OF OPTIONAL STANDBY SOURCE LABELING ABOVE.

SERVICE DISCONNECT LABEL

THE SERVICE DISCONNECTING MEANS SHALL BE PROPERLY MARKED "SERVICE DISCONNECT". REFER TO SPEC SECTION 26 00 20 FOR FURTHER IDENTIFICATION PLATE REQUIREMENTS.

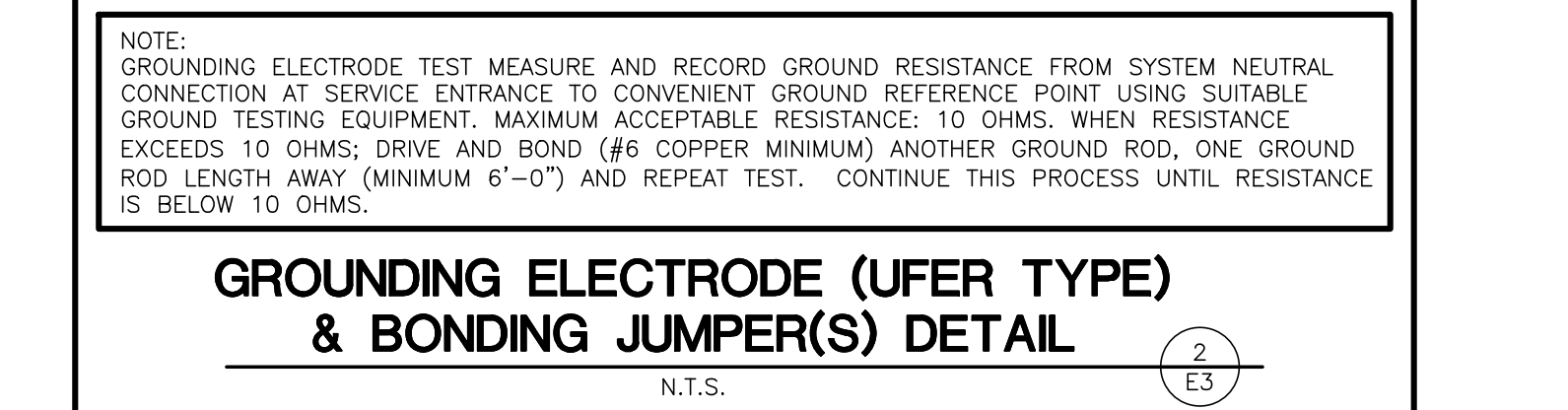
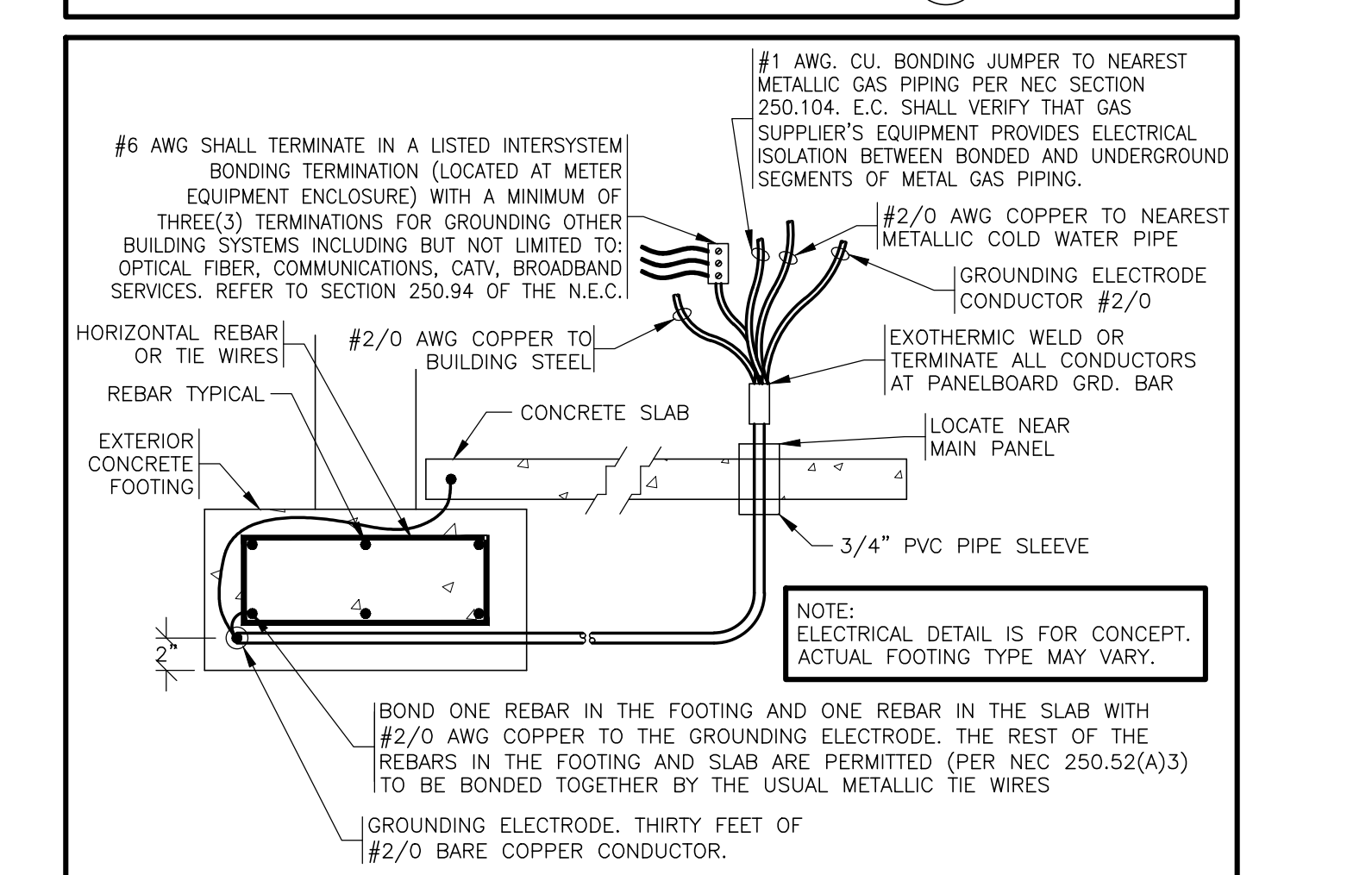


BONDING REQUIREMENTS

NOTE:

- BOND ALL NONCURRENT CARRYING METAL PARTS OF SERVICE EQUIPMENT (INCLUDING ENCLOSURE) TO GROUNDING ELECTRODE AS REQUIRED. PER NEC 250-92.
- THE GROUNDED NEUTRAL CONDUCTOR SHALL BE RUN TO AND BONDED TO EACH SERVICE DISCONNECTING MEANS ENCLOSURE IN ACCORDANCE WITH NEC 250-24c.
- BONDING OF OTHER ENCLOSURES SHALL BE IN ACCORDANCE WITH NEC 250-96.

SERVICE EQUIPMENT GROUNDING & BONDING SHALL BE IN ACCORDANCE WITH: *NEC 250-24 *NEC 250-28 *NEC 250-53 *NEC 250-66 *NEC 250-90 *NEC 250-92 *NEC 250-130



SGE
SMITH-BOTH ENGINEERS, INC.

3855 S. JEFFERSON AVE. P: 417-882-2200
SPRINGFIELD, MO 65807 F: 417-882-1188
WWW.SMITHBOTH.COM

TIMOTHY M. GULLIOT ARCHITECT

1736 East Sunshine, Suite 417
Springfield, Missouri 65804

417.862.0558
417.862.3265
e-mail: architect@esteytschneider.com

PROJECT: NEW O'REILLY AUTO PARTS STORE
STROH RD
PARKER, CO #2

O'Reilly AUTO PARTS

CORPORATE OFFICES
233 SOUTH PATTERSON
SPRINGFIELD, MISSOURI 65802
(417) 862-2674 TELEPHONE

COMM # 4884
DATE: 02-14-2025
REVISION
DATE: 07-01-25

E3 of 4