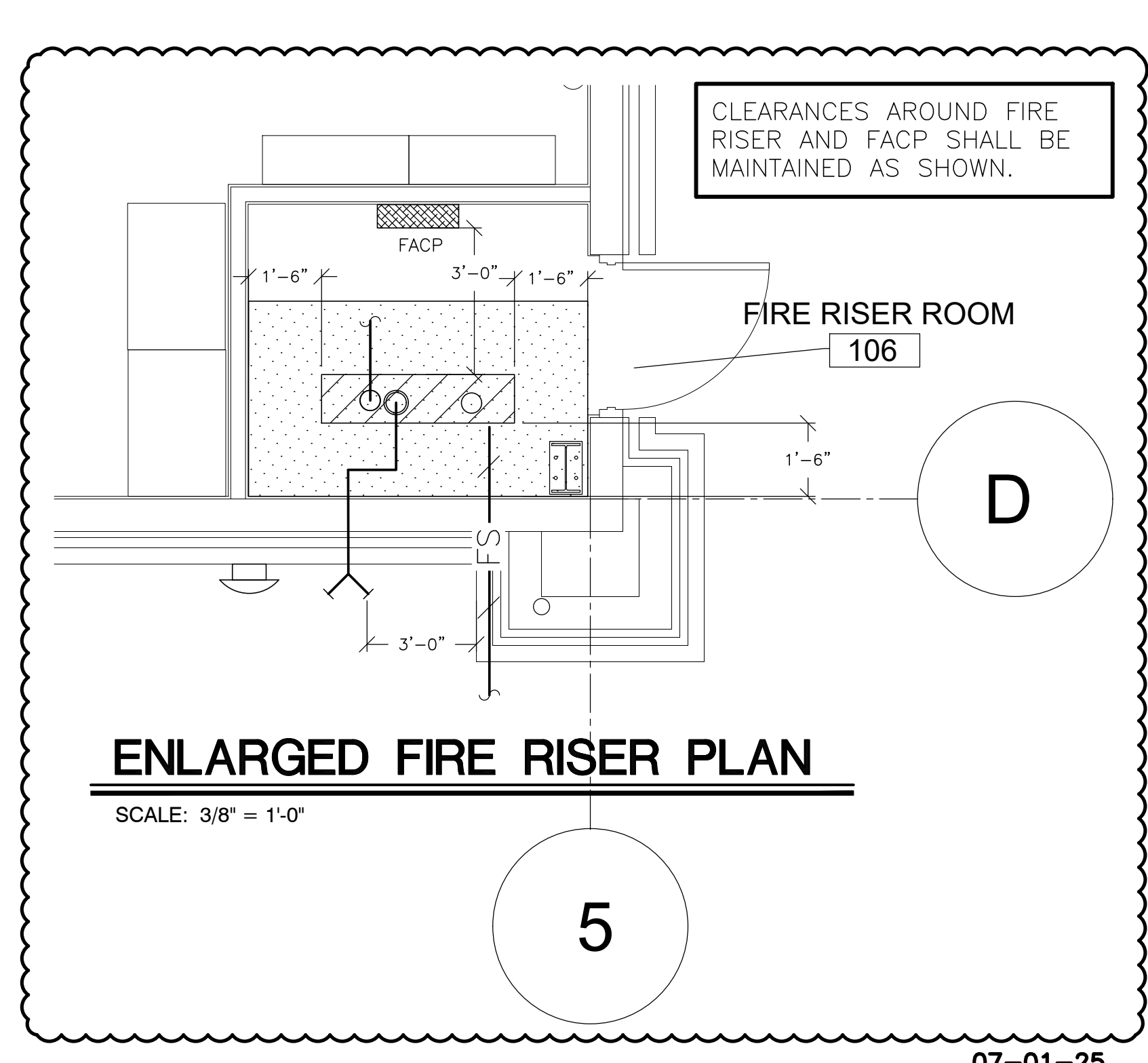
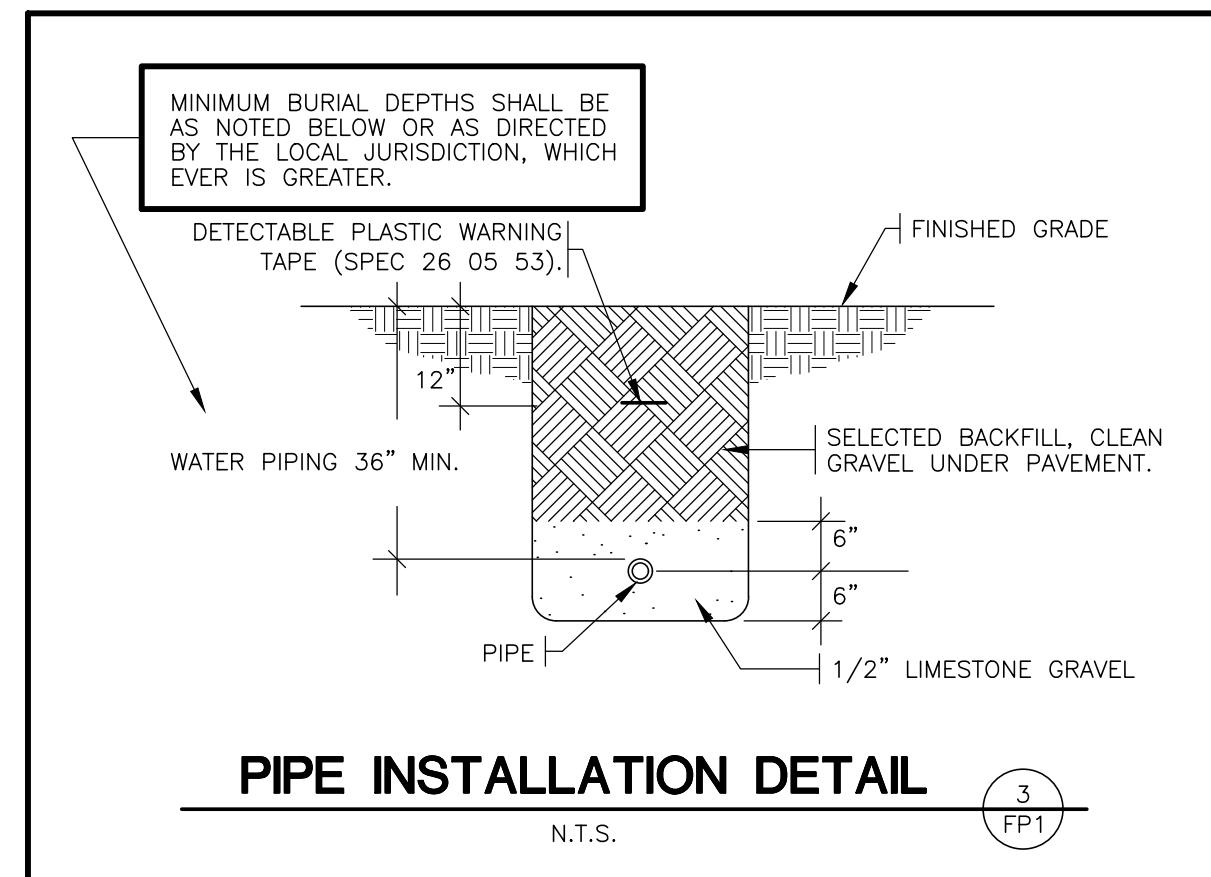


**WORKING PLAN & HYDRAULICS:**  
 WORKING PLANS & HYDRAULIC CALCULATIONS: SPRINKLER SYSTEM DRAWINGS PREPARED ACCORDING TO NFPA 13. WORKING PLANS AND HYDRAULIC CALCULATIONS SHALL BE SEALED BY A PROFESSIONAL ENGINEER REGISTERED IN THE RESPECTIVE STATE OF THE PROJECT.  
 SUBMIT TO: "WORKING PLANS AND HYDRAULIC CALCULATIONS" MUST BE SUBMITTED TO THE MEP DESIGN ENGINEER OF RECORD FOR REVIEW AND APPROVAL PRIOR TO SUBMISSION TO AUTHORITIES HAVING JURISDICTION. ONCE MEP DESIGN ENGINEER OF RECORD HAS APPROVED "WORKING PLANS AND HYDRAULIC CALCULATIONS," SUBMIT REQUIRED NUMBER OF SETS TO AUTHORITY HAVING JURISDICTION FOR REVIEW, COMMENT AND APPROVAL.

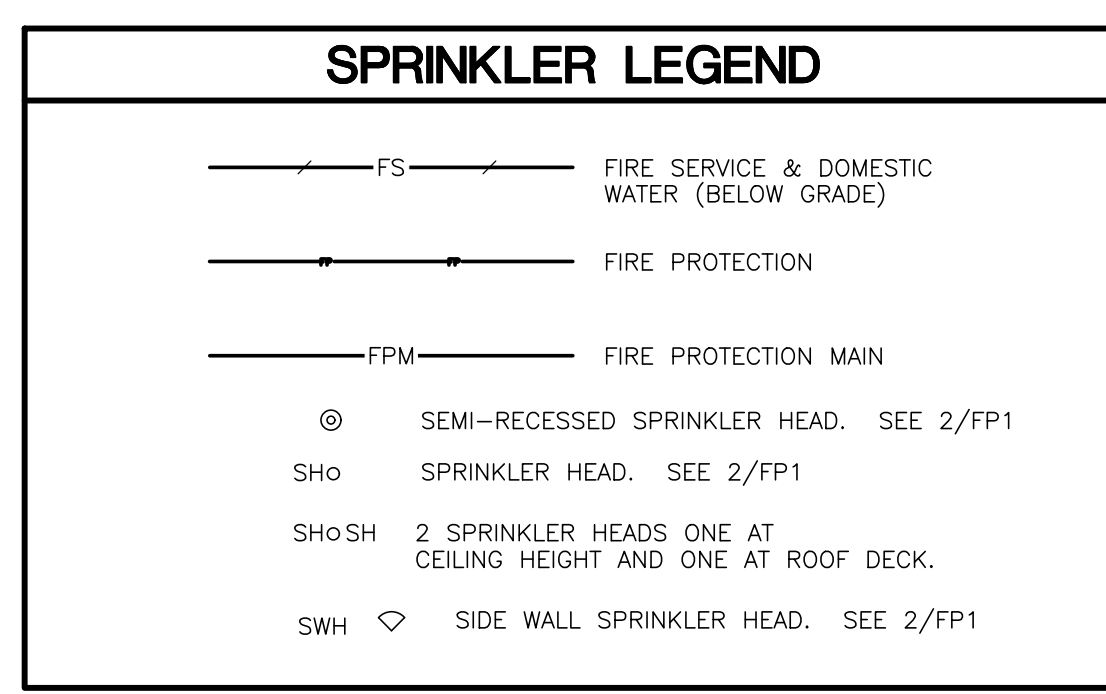


PROFESSIONAL ENGINEER  
 MISSOURI LICENSE NO. 4728  
 01/03/25  
 DRAWN BY: LT

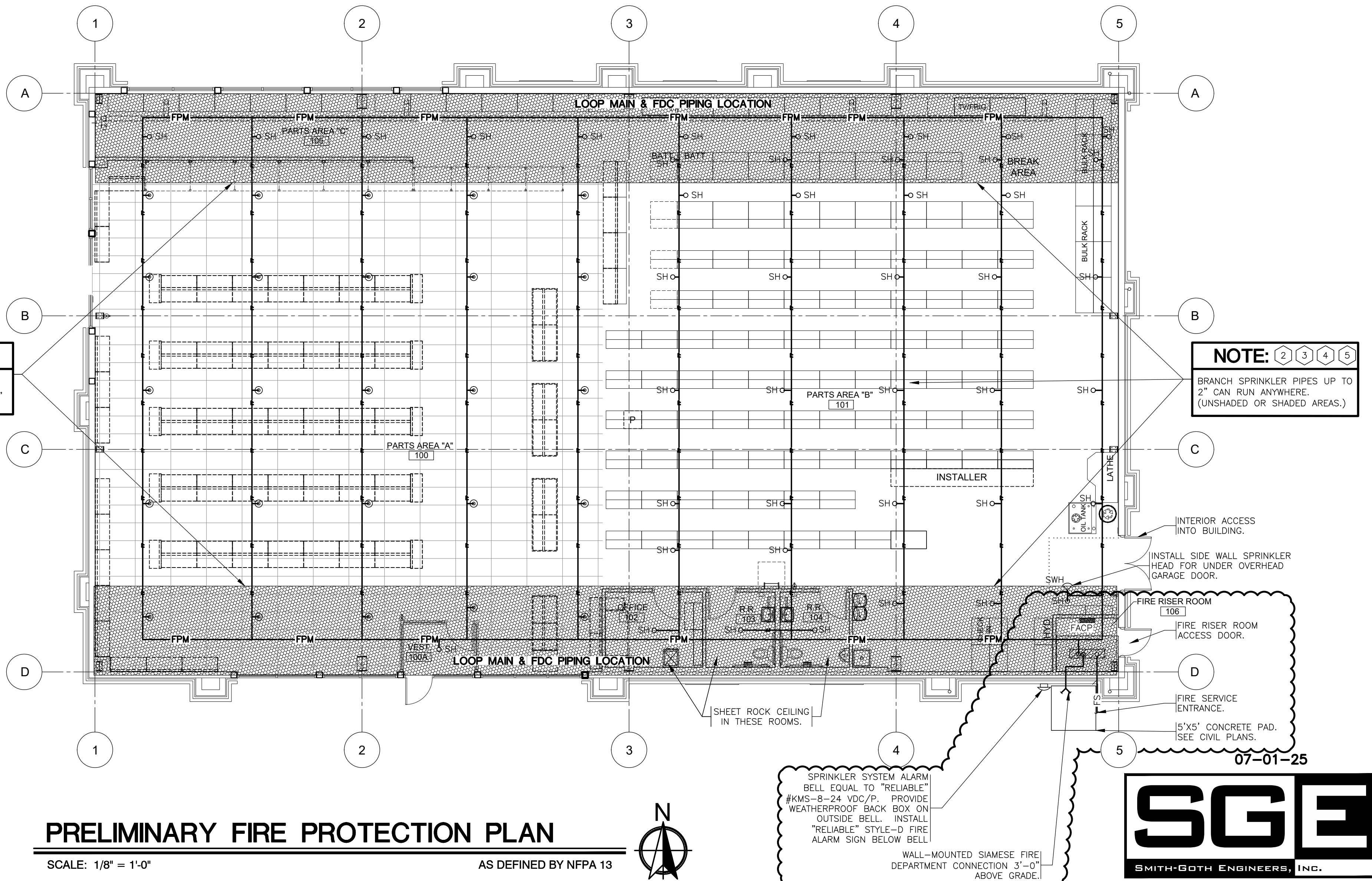
- GENERAL SPRINKLER NOTES**
- ALL DRAWINGS ARE "PRELIMINARY" (AS DEFINED BY NFPA 13), DIAGRAMMATIC AND ARE NOT TO BE SCALED. REFER TO ARCHITECTURAL DRAWINGS FOR DIMENSIONS.
  - THE CONTRACTOR SHALL COORDINATE WITH ALL STATE AND LOCAL BUILDING REGULATION AGENCIES AND UTILITY COMPANY(S) IN THE PROCUREMENT OF AND PAYMENT OF ALL PERMITS, LICENSES, FEES AND CHARGES REQUIRED FOR THE PERFORMANCE OF THE WORK.
  - THE CONTRACTOR IS RESPONSIBLE FOR ALL FEES AND DIRECT EXPENSES INVOLVED IN ANY INSPECTION REQUIRED FOR THE PROJECT.
  - SEE SPECIFICATION SECTION 20 02 00 "CONTRACT CLOSE-OUT AND COMMISSIONING" FOR WORK REQUIRED TO COMPLETE THIS PROJECT.
  - SEE SPECIFICATIONS FOR REQUIREMENTS FOR PIPING, SPRINKLER HEADS, BACKFLOW PREVENTION, SUBMITTALS, ETC.
  - SEE SPECIFICATIONS AND PLAN NOTES FOR HAZARD CLASSIFICATIONS. ALL PIPING SHALL BE SIZED BY HYDRAULIC CALCULATIONS.
  - ALL WORK SHALL COMPLY WITH THE REQUIREMENTS OF NFPA 13 AND APPLICABLE BUILDING CODE REQUIREMENTS FOR SPRINKLERS.
  - COORDINATE ALL HEAD AND PIPE LOCATIONS WITH THE WORK OF OTHER TRADES. VERIFY ALL CEILING CONDITIONS. COORDINATION DOES NOT MEAN "I WAS HERE FIRST".
  - THE CONTRACTOR SHALL INSTALL A COMPLETE AND OPERABLE SYSTEM TO PROTECT THE BUILDING AS INDICATED, WHETHER OR NOT EVERY ELEMENT REQUIRED IS SPECIFICALLY CALLED OUT.
  - CONTRACTOR SHALL SUBMIT SPRINKLER SYSTEM DRAWINGS IDENTIFIED AS "WORKING PLANS" PREPARED ACCORDING TO NFPA 13. SUBMIT REQUIRED NUMBER OF SETS TO AUTHORITY HAVING JURISDICTION FOR REVIEW, COMMENT AND APPROVAL. INCLUDE SYSTEM HYDRAULIC CALCULATIONS, WORKING PLANS AND HYDRAULIC CALCULATIONS SHALL BE SEALED BY A REGISTERED PROFESSIONAL ENGINEER. DO NOT SUBMIT UNSEALED DRAWINGS, AS THEY WILL BE REJECTED.
  - DO NOT INSTALL THE FIRE SERVICE OR ANY SPRINKLER SYSTEM PIPING UNTIL THE SPRINKLER SHOP DRAWINGS AND HYDRAULIC CALCULATIONS ARE APPROVED, BY THE FOLLOWING:
    - OWNER
    - ENGINEER
    - CODE OFFICIALS



FIRE SPRINKLER CONTRACTOR SHALL SIZE ALL PIPING FOR SPRINKLER SYSTEM.



- LOCATION & SUPPORT REQUIREMENTS OF SPRINKLER PIPING**
- FIRE PROTECTION MAIN AND FDC PIPING SHALL BE LOCATED IN SHADED AREAS AS SHOWN. PIPES SHALL BE SUPPORTED AT A MAXIMUM OF 5'-0" ON CENTER. REFER TO FIRE PROTECTION SUPPORT DETAILS FOR MINIMUM SUPPORT REQUIREMENTS.
  - REFER TO SHEET T1 FOR SPRINKLER PIPE WEIGHT REQUIREMENTS FOR PEMB DESIGN.
  - FIRE PROTECTION BRANCH PIPE SHALL BE SUPPORTED FROM DIFFERENT ROOF PURLINS THAN THE ADJACENT BRANCH PIPE.
  - FIRE PROTECTION BRANCH PIPE SHALL BE SUPPORTED AT ALTERNATE PURLINS AND AT A MAXIMUM OF 10'-0" ON CENTER, UNLESS SHORTER SPACING DICTATED BY PIPING/PIPING LAYOUT.
  - ALL FIRE PROTECTION BRANCH PIPE SHALL BE SUPPORTED WITHIN 7'-6" OF MAIN PIPE.



**PRELIMINARY FIRE PROTECTION PLAN**  
 SCALE: 1/8" = 1'-0"  
 AS DEFINED BY NFPA 13

07-01-25

**SGE**  
 SMITH-GOTH ENGINEERS, INC.  
 3855 S. JEFFERSON AVE. P: 417-882-2200  
 SPRINGFIELD, MO 65807 F: 417-882-1188  
 WWW.SMITHGOTH.COM

**PROJECT:** NEW O'REILLY AUTO PARTS STORE  
 STROH RD  
 PARKER, CO #2

**PRELIM. FIRE PROTECTION PLAN**

**Timothy M. Guillot**  
 ARCHITECT  
 1736 East Sunshine, Suite 417  
 Springfield, Missouri 65804  
 417.862.0558  
 417.862.3265  
 e-mail: architect@esteytschneider.com

**O'Reilly AUTO PARTS**  
 CORPORATE OFFICES  
 233 SOUTH PATTERSON  
 SPRINGFIELD, MISSOURI 65802  
 (417) 862-2674 TELEPHONE

COMM # 4884  
 DATE: 02-14-2025  
 REVISION DATE: 05-02-25  
 07-01-25

FP1 of 2

REPRODUCTION PROHIBITED WITHOUT THE EXPRESSED WRITTEN CONSENT OF THE DESIGN PROFESSIONAL.