

EROSION CONTROL LEGEND

TITLE	KEY	SYMBOL
AREA OF NO WORK		
CONCRETE WASHOUT AREA	CWA	
CONSTRUCTION FENCE	CF	
DEBRIS TRASH CONTROL	DTC	
EROSION CONTROL BLANKET ON SLOPES GREATER THAN 3:1 OR WHERE SPECIFIED ON PLAN	ECB	
INLET PROTECTION FOR AREA INLETS NOT IN PAVEMENT	IPAN	
INLET PROTECTION, CURB ON-GRADE, TYPE R INLET	IPCOG	
MASONRY WORK PROTECTION	MWP	
PORTABLE TOILET PROTECTION	PTP	
ROCK SOCK	RS	
SEDIMENT CONTROL LOG	SCL	
SEEDING, MULCHING AND CRIMPING	SMC	
SIDEWALK TRANSITION PROTECTION	STP	
SILT FENCE	SF	
STABILIZED STAGING AREA	SSA	
SURFACE ROUGHENING	SR	
VEHICLE TRACKING CONTROL	VTC	

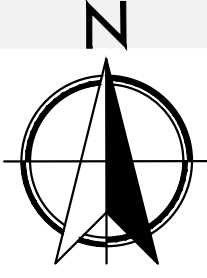
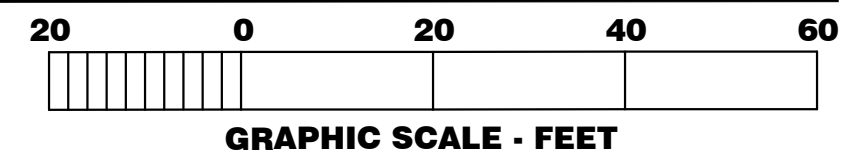
- ### GENERAL PHASING NOTES
- PHASE 1:(PRE-CONSTRUCTION)**
- INSTALLATION OF EROSION CONTROL SILT FENCE.
 - DEMOLITION OF EXISTING SITE IMPROVEMENTS.
 - REMOVAL OF EXISTING PAVEMENT ON THE SITE.
 - SILT FENCE
 - CONSTRUCTION VEHICLE TRACKING CONTROL
 - STABILIZED STAGING AREA
 - SANITARY FACILITIES
 - ROCK SOCKS
- PHASE 2:(DURING GRADING, AND PAVING)**
- INSTALLATION OF ALL STORM WATER DRAINAGE IMPROVEMENTS.
 - ROUGH GRADING.
 - CONSTRUCTION OF NEW SITE IMPROVEMENTS.
 - FINAL GRADING.
 - CONCRETE WASHOUT AREA PRIOR TO ANY CONCRETE WORK
 - SEEDING AND MULCHING STOCKPILES OVER 7-DAYS IDLE
 - INLET PROTECTION FOR PROPOSED ONCE INSTALLED
- PHASE 3:(POST PAVING)**
- PLACEMENT OF FINAL LANDSCAPING ITEMS AND SOD.
 - REMOVAL OF EROSION CONTROL FENCE.
 - FINAL LANDSCAPE INSTALLATION PER LANDSCAPE PLANS
 - REMOVE REMAINING EROSION CONTROL BMP'S ONCE STABILIZED

- ### EROSION GENERAL NOTES
- THE VTC PAD FOR A CWA DOES NOT NEED TO CONFORM TO THE FORMAL VTC DETAIL.
 - THE TRUE LOCATION OF THE CWA MAY BE DETERMINED BY THE TOWN AND THE ECS.
 - LOT PROTECTION (LP) IS REQUIRED ON COMMERCIAL LOTS WHEN COMPLETION OF LANDSCAPING IS NOT POSSIBLE AND PRIOR TO ISSUANCE OF A TEMPORARY CERTIFICATE OF OCCUPANCY.
 - THE TRUE LOCATION OF THE PORTABLE TOILET PROTECTION (PTP) MAY BE DETERMINED BY THE TOWN AND THE ECS.
 - MASONRY WORK PROTECTION IS REQUIRED FOR CONSTRUCTION OF BUILDINGS.
 - ANY ON-SITE BULK FUEL STORAGE REQUIRES A FIRE LIFE SAFETY PERMIT FROM THE TOWN OF PARKER PRIOR TO INSTALLATION.
 - REFER TO SHEET C1.4 FOR COMPLETE LIST OF EROSION CONTROL GENERAL NOTES.

1 INITIAL SITE EROSION CONTROL PLAN

C1.2 SCALE: 1" = 20'-0"

THIS PLAN HAS BEEN REVISED TO TRANSFER INTERIM/FINAL EROSION CONTROL MEASURES TO A NEW SHEET - SHEET C1.3. ADDITIONAL GENERAL REVISIONS HAVE BEEN MADE TO COMPLY WITH TOWN OF PARKER REQUIREMENTS.



PREPARED UNDER THE SUPERVISION OF TAIT & ASSOCIATES, INC.

320 North Lincoln Avenue
Loveland, CO 80537
p: 970.613.1447
www.tait.com

ENGINEERING ENVIRONMENTAL BUILDING LAND
SACRAMENTO DENVER
SAN LEUIS OBISPO RIVERSIDE
Since 1914

LOT 1 PARKER POINTE SUBDIVISION FILING 1

PROJECT:
NEW O'REILLY AUTO PARTS STORE
STROH RD
PARKER, CO #2

INITIAL SITE EROSION CONTROL PLAN

TIMOTHY M. GUILLOT
ARCHITECT

1736 East Sunshine, Suite 417
Springfield, Missouri 65804

417.862.6588
Fax: 417.862.3265
e-mail: architect@esterfyschneider.com

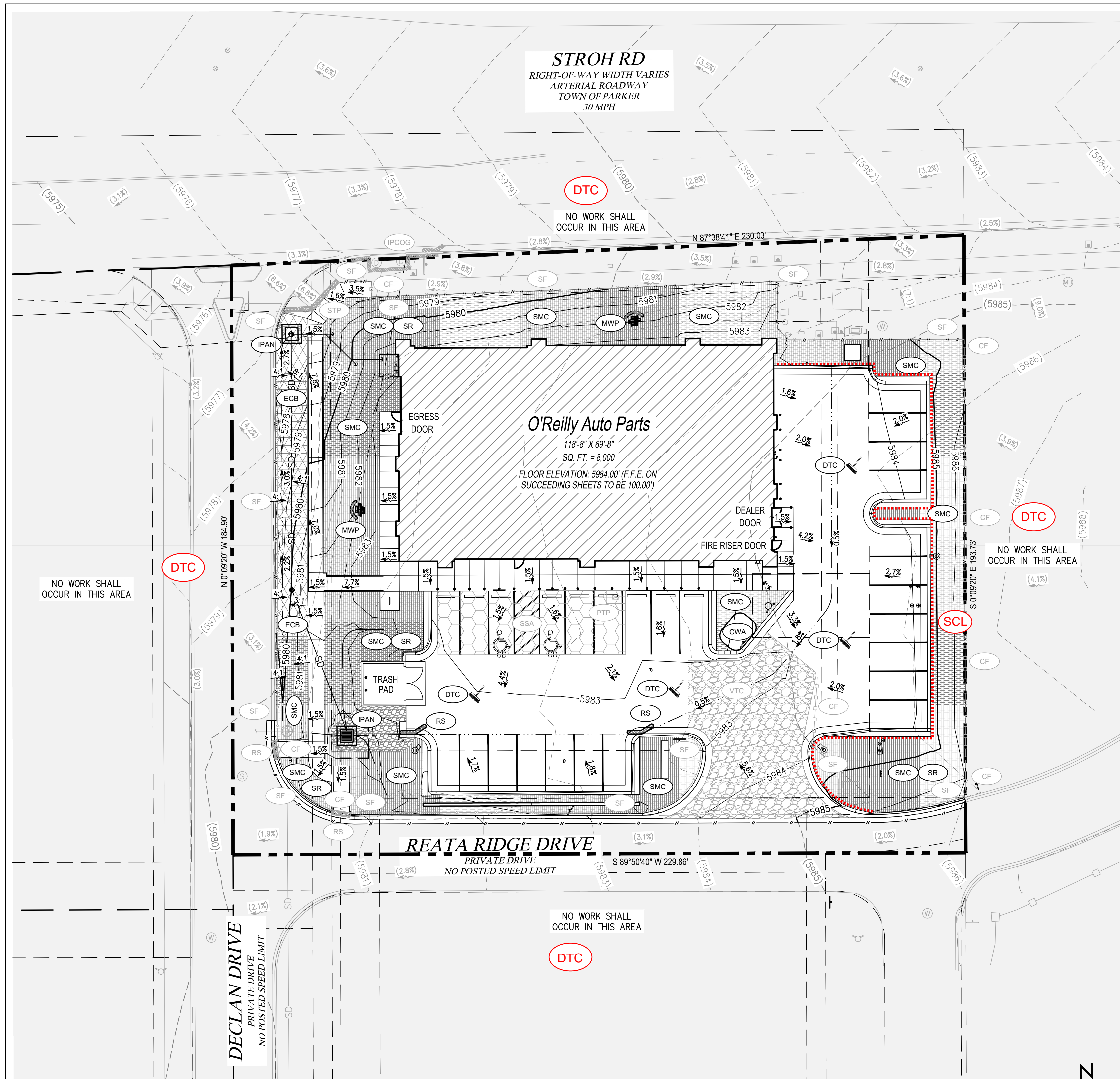
O'Reilly AUTO PARTS

CORPORATE OFFICES
233 SOUTH PATTERSON
SPRINGFIELD, MISSOURI 65802
(417) 862-2674 TELEPHONE

COMM # 4884
DATE: 02/14/2025
REVISION
DATE: 05/02/2025

THE TOWN OF PARKER REVIEW CONSTITUTES GENERAL COMPLIANCE WITH THE TOWN'S STANDARDS AND APPROVED VARIANCES. SUBJECT TO THESE PLANS BEING STAMPED, SIGNED AND DATED BY THE PROFESSIONAL ENGINEER OF RECORD. REVIEW BY THE TOWN DOES NOT CONSTITUTE APPROVAL OF THE PLAN DESIGN OR ACCURACY AND CORRECTNESS OF ENGINEERING CALCULATIONS. ERRORS IN THE DESIGN OR CALCULATIONS REMAIN THE RESPONSIBILITY OF THE REGISTERED PROFESSIONAL ENGINEER WHOSE STAMP AND SIGNATURE ARE AFFIXED TO THIS DOCUMENT.

THIS REVIEW DOES NOT CONSTITUTE APPROVAL OF ANY PRIVATE ON-SITE IMPROVEMENTS WHICH MAY BE SHOWN. CONSTRUCTION CANNOT COMMENCE UNTIL ALL REQUIRED DRAINAGE/TRAFFIC REPORT(S), FINAL DEVELOPMENT PLAN(S), SPECIAL REVIEW(S), GRADING PERMIT, AND/OR OTHER PERMITS ARE COMPLETE, APPROVED AND ON FILE WITH THE TOWN OF PARKER.



EROSION CONTROL LEGEND

TITLE	KEY	SYMBOL
AREA OF NO WORK		
CONCRETE WASHOUT AREA	CWA	
CONSTRUCTION FENCE	CF	
DEBRIS TRASH CONTROL	DTC	
EROSION CONTROL BLANKET ON SLOPES GREATER THAN 3:1 OR WHERE SPECIFIED ON PLAN	ECB	
INLET PROTECTION FOR AREA INLETS NOT IN PAVEMENT	IPAN	
INLET PROTECTION, CURB ON-GRADE, TYPE R INLET	IPCOG	
MASONRY WORK PROTECTION	MWP	
PORTABLE TOILET PROTECTION	PTP	
ROCK SOCK	RS	
SEDIMENT CONTROL LOG	SCL	
SEEDING, MULCHING AND CRIMPING	SMC	
SIDEWALK TRANSITION PROTECTION	STP	
SILT FENCE	SF	
STABILIZED STAGING AREA	SSA	
SURFACE ROUGHENING	SR	
VEHICLE TRACKING CONTROL	VTC	

GENERAL PHASING NOTES

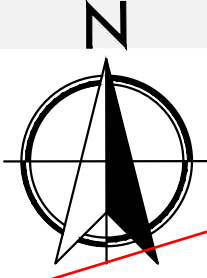
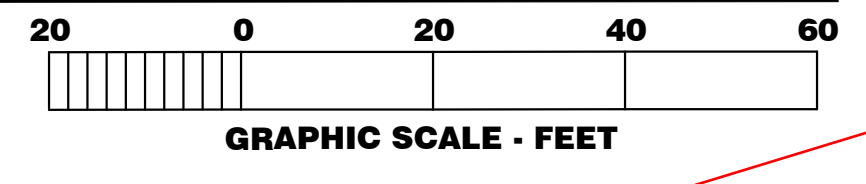
- PHASE 1:(PRE-CONSTRUCTION)**
- INSTALLATION OF EROSION CONTROL SILT FENCE.
 - DEMOLITION OF EXISTING SITE IMPROVEMENTS.
 - REMOVAL OF EXISTING PAVEMENT ON THE SITE.
 - SILT FENCE
 - CONSTRUCTION VEHICLE TRACKING CONTROL
 - STABILIZED STAGING AREA
 - SANITARY FACILITIES
 - ROCK SOCKS
- PHASE 2:(DURING GRADING, AND PAVING)**
- INSTALLATION OF ALL STORM WATER DRAINAGE IMPROVEMENTS.
 - ROUGH GRADING.
 - CONSTRUCTION OF NEW SITE IMPROVEMENTS.
 - FINAL GRADING.
 - CONCRETE WASHOUT AREA
 - SEEDING AND MULCHING
 - STOCKPILES OVER 7-DAYS IDLE
 - INLET PROTECTION FOR PROPOSED ONCE INSTALLED
- PHASE 3:(POST PAVING)**
- PLACEMENT OF FINAL LANDSCAPING ITEMS AND SOD.
 - REMOVAL OF EROSION CONTROL FENCE.
 - FINAL LANDSCAPE INSTALLATION PER LANDSCAPE PLANS
 - REMOVE REMAINING EROSION CONTROL BMP'S ONCE STABILIZED

EROSION GENERAL NOTES

- THE VTC PAD FOR A CWA DOES NOT NEED TO CONFORM TO THE FORMAL VTC DETAIL.
- THE TRUE LOCATION OF THE CWA MAY BE DETERMINED BY THE TOWN AND THE ECS.
- LOT PROTECTION (LP) IS REQUIRED ON COMMERCIAL LOTS WHEN COMPLETION OF LANDSCAPING IS NOT POSSIBLE AND PRIOR TO ISSUANCE OF A TEMPORARY CERTIFICATE OF OCCUPANCY.
- THE TRUE LOCATION OF THE PORTABLE TOILET PROTECTION (PTP) MAY BE DETERMINED BY THE TOWN AND THE ECS.
- MASONRY WORK PROTECTION IS REQUIRED FOR CONSTRUCTION OF BUILDINGS.
- ANY ON-SITE BULK FUEL STORAGE REQUIRES A FIRE LIFE SAFETY PERMIT FROM THE TOWN OF PARKER PRIOR TO INSTALLATION.
- REFER TO SHEET C1.4 FOR COMPLETE LIST OF EROSION CONTROL GENERAL NOTES.

1 FINAL SITE EROSION CONTROL PLAN

C1.3 SCALE: 1" = 20'-0"



Interim/Final

PREPARED UNDER THE SUPERVISION OF TAIT & ASSOCIATES, INC.

TAIT & ASSOCIATES
 320 North Lincoln Avenue
 Loveland, CO 80537
 p: 970.613.1447
 www.tait.com
 ENGINEERING ENVIRONMENTAL LAND & ASSOCIATES
 Santa Ana Denver
 San Luis Obispo Riverside Boise
 Since 1914

STEVEN P. BUNCH, P.E. 6575
 LICENSED PROFESSIONAL ENGINEER

TIMOTHY M. GUILLOT
 ARCHITECT
 1736 East Sunshine, Suite 417
 Springfield, Missouri 65804
 417.862.0558
 Fax: 417.862.3265
 e-mail: architect@esteryschneider.com

LOT 1 PARKER POINTE SUBDIVISION FILING 1

PROJECT:
NEW O'REILLY AUTO PARTS STORE
STROTH RD
PARKER, CO #2

FINAL SITE EROSION CONTROL PLAN

O'Reilly AUTO PARTS

CORPORATE OFFICES
 233 SOUTH PATTERSON
 SPRINGFIELD, MISSOURI 65802
 (417) 862-2674 TELEPHONE

COMM #	4884
DATE:	05/02/2025
REVISION	
DATE:	

THE TOWN OF PARKER REVIEW CONSTITUTES GENERAL COMPLIANCE WITH THE TOWN'S STANDARDS AND APPROVED VARIANCES. SUBJECT TO THESE PLANS BEING STAMPED, SIGNED AND DATED BY THE PROFESSIONAL ENGINEER OF RECORD. REVIEW BY THE TOWN DOES NOT CONSTITUTE APPROVAL OF THE PLAN DESIGN OR ACCURACY AND CORRECTNESS OF ENGINEERING CALCULATIONS. ERRORS IN THE DESIGN OR CALCULATIONS REMAIN THE RESPONSIBILITY OF THE REGISTERED PROFESSIONAL ENGINEER WHOSE STAMP AND SIGNATURE ARE AFFIXED TO THIS DOCUMENT.

THIS REVIEW DOES NOT CONSTITUTE APPROVAL OF ANY PRIVATE ON-SITE IMPROVEMENTS WHICH MAY BE SHOWN. CONSTRUCTION CANNOT COMMENCE UNTIL ALL REQUIRED DRAINAGE/TRAFFIC REPORT(S), FINAL DEVELOPMENT PLAN(S), SPECIAL REVIEW(S), GRADING PERMIT, AND/OR OTHER PERMITS ARE COMPLETE, APPROVED AND ON FILE WITH THE TOWN OF PARKER.