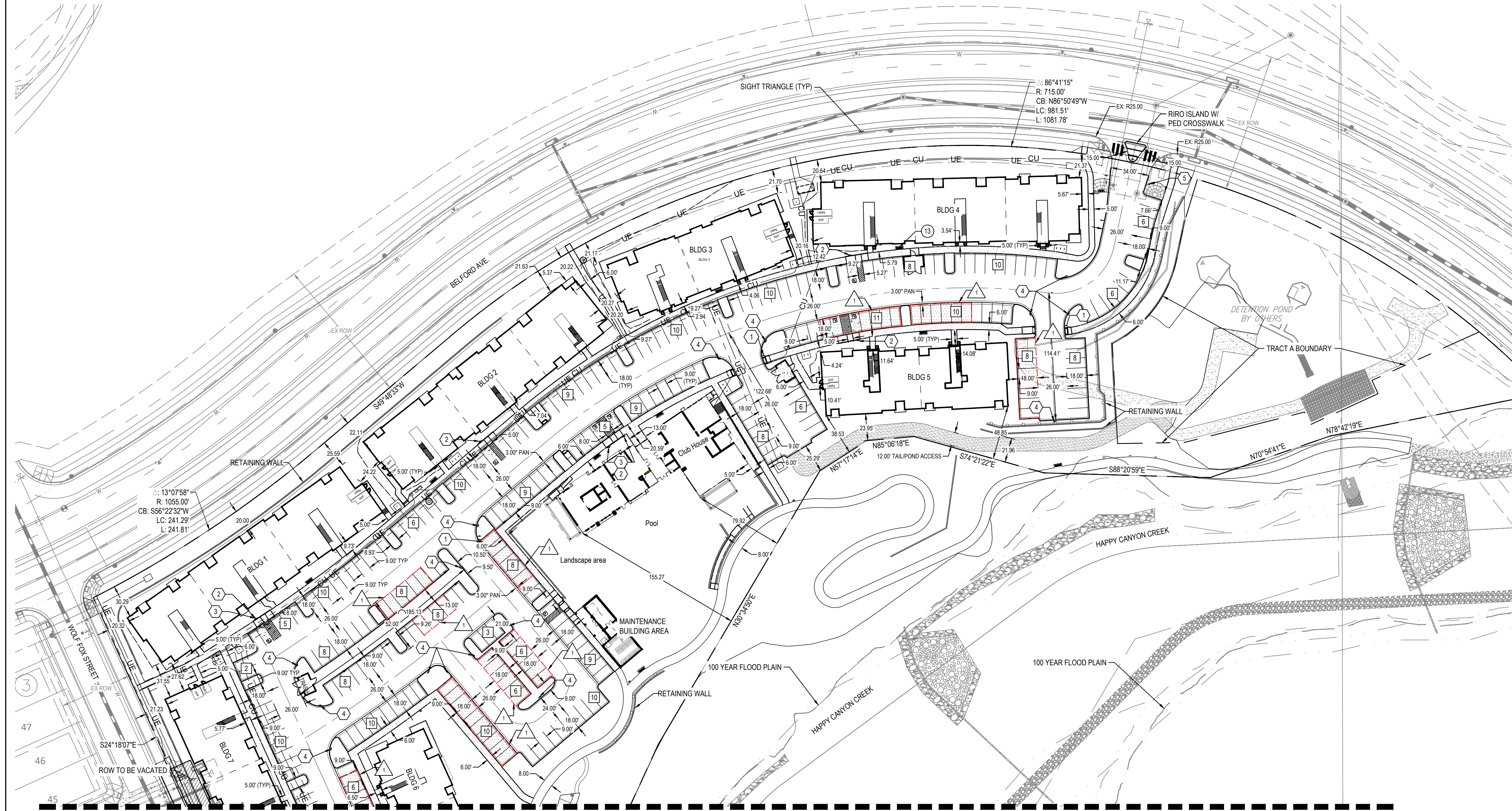
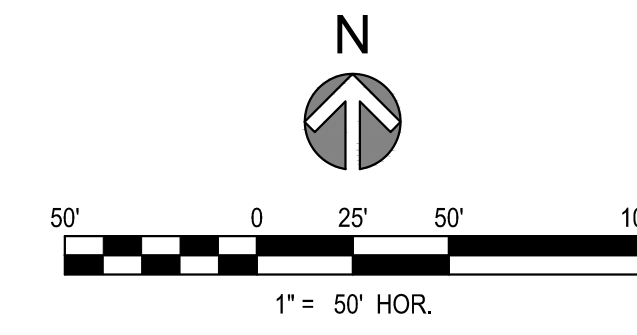


COMPARK VILLAGE SOUTH  
F1 AMD 2 - MULTIFAMILY  
SITE PLAN

LOT 1, COMPARK VILLAGE FILING NO. 1, AMEND NO. 2  
SOUTH HALF SECTION 6, TOWNSHIP 6 SOUTH, RANGE 66 WEST OF THE 6TH PRINCIPAL MERIDIAN  
TOWN OF PARKER, COUNTY OF DOUGLAS, STATE OF COLORADO



MATCH LINE SEE SHEET 4

LEGEND / KEYNOTES

- PARKING SPACE COUNT
- PROPERTY LINE
- SIGN
- R1-1 (30' x 30')
- R7-8 (12' x 18')
- R7-8 P (12' x 9')
- R7-1 (SP) (12' x 18')
- R2-1 (SP) (12' x 18')
- PAVEMENT MARKING OF INTERNATIONAL SYMBOL OF ACCESSIBILITY
- CAR PORT

NOTES  
1. DIMENSIONS ARE TO FLOWLINE UNLESS OTHERWISE NOTED.

PROJECT NUMBER  
65120950  
  
DRAWN BY  
TV  
  
DATE  
01/03/2025

REVISIONS  
1 RFI 21  
2 CAR PORTS



PREPARED FOR CENTURY COMMUNITIES



PROJECT  
**COMPARK VILLAGE SOUTH**

TOWN OF PARKER, COUNTY OF DOUGLAS, COLORADO 80134

SHEET TITLE  
SITE PLAN

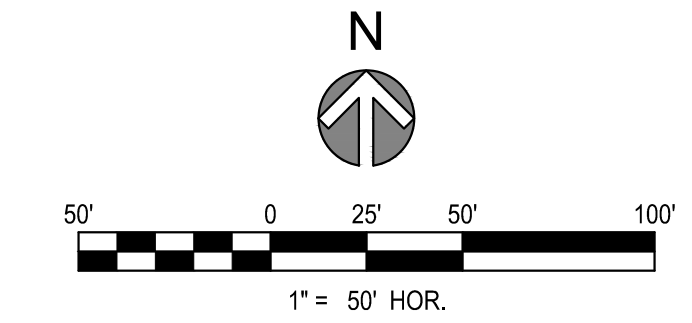
SHEET NUMBER  
3

COMPARK VILLAGE SOUTH  
F1 AMD 2 - MULTIFAMILY  
SITE PLAN

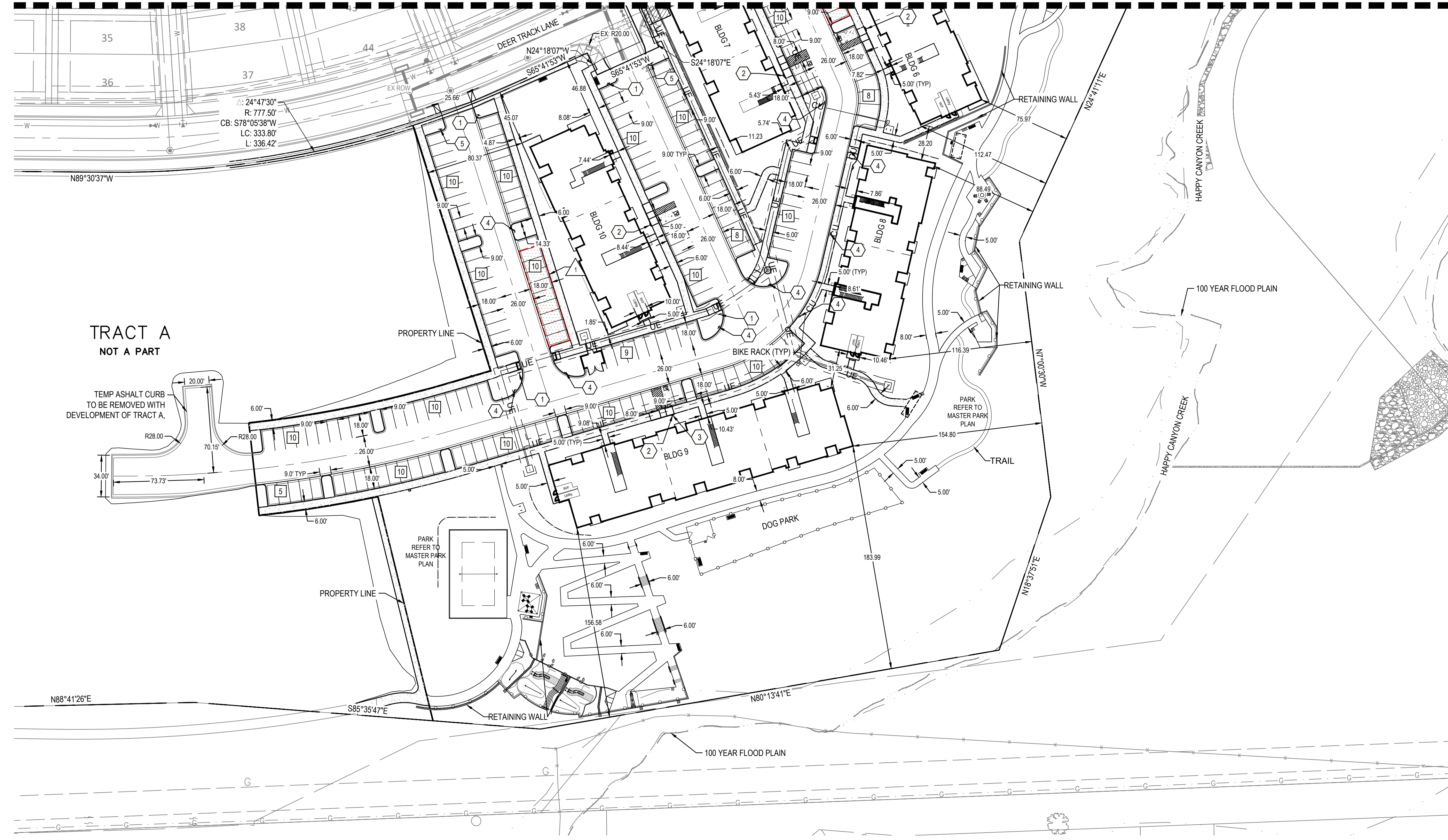
LOT 1, COMPARK VILLAGE FILING NO. 1, AMEND NO. 2  
SOUTH HALF SECTION 6, TOWNSHIP 6 SOUTH, RANGE 66 WEST OF THE 6TH PRINCIPAL MERIDIAN  
TOWN OF PARKER, COUNTY OF DOUGLAS, STATE OF COLORADO

PROJECT NUMBER  
65120950  
  
DRAWN BY  
TV  
  
DATE  
01/03/2025

REVISIONS  
1 RFI 21  
2 CAR PORTS



MATCH LINE SEE SHEET 3



LEGEND / KEYNOTES

- PARKING SPACE COUNT
- PROPERTY LINE
- SIGN
- R1-1 (30' x 30')
- R7-8 (12' x 18')
- R7-8 P (12' x 9')
- R7-1 (SP) (12' x 18')
- R2-1 (SP) (12' x 18')
- PAVEMENT MARKING OF INTERNATIONAL SYMBOL OF ACCESSIBILITY
- CAR PORT

NOTES  
1. DIMENSIONS ARE TO FLOWLINE UNLESS OTHERWISE NOTED.



PREPARED FOR CENTURY COMMUNITIES



PROJECT  
**COMPARK VILLAGE SOUTH**

TOWN OF PARKER, COUNTY OF DOUGLAS, COLORADO 80134

SHEET TITLE  
SITE PLAN

SHEET NUMBER  
4

COMPARK VILLAGE SOUTH  
 F1 AMD 2 - MULTIFAMILY  
 SITE PLAN  
 LOT 2, COMPARK VILLAGE FILING NO. 1, AMEND NO. 2  
 SOUTH HALF SECTION 6, TOWNSHIP 6 SOUTH, RANGE 66 WEST OF THE 6TH PRINCIPAL MERIDIAN  
 TOWN OF PARKER, COUNTY OF DOUGLAS, STATE OF COLORADO

PROJECT NUMBER  
 210512  
 DRAWN BY  
  
 DATE  
 03/11/2025



Architecture + Planning  
 820 16th Street, Suite 500  
 Denver, CO 80202  
 ktgy.com  
 303.825.6400

PREPARED FOR CENTURY  
 COMMUNITIES

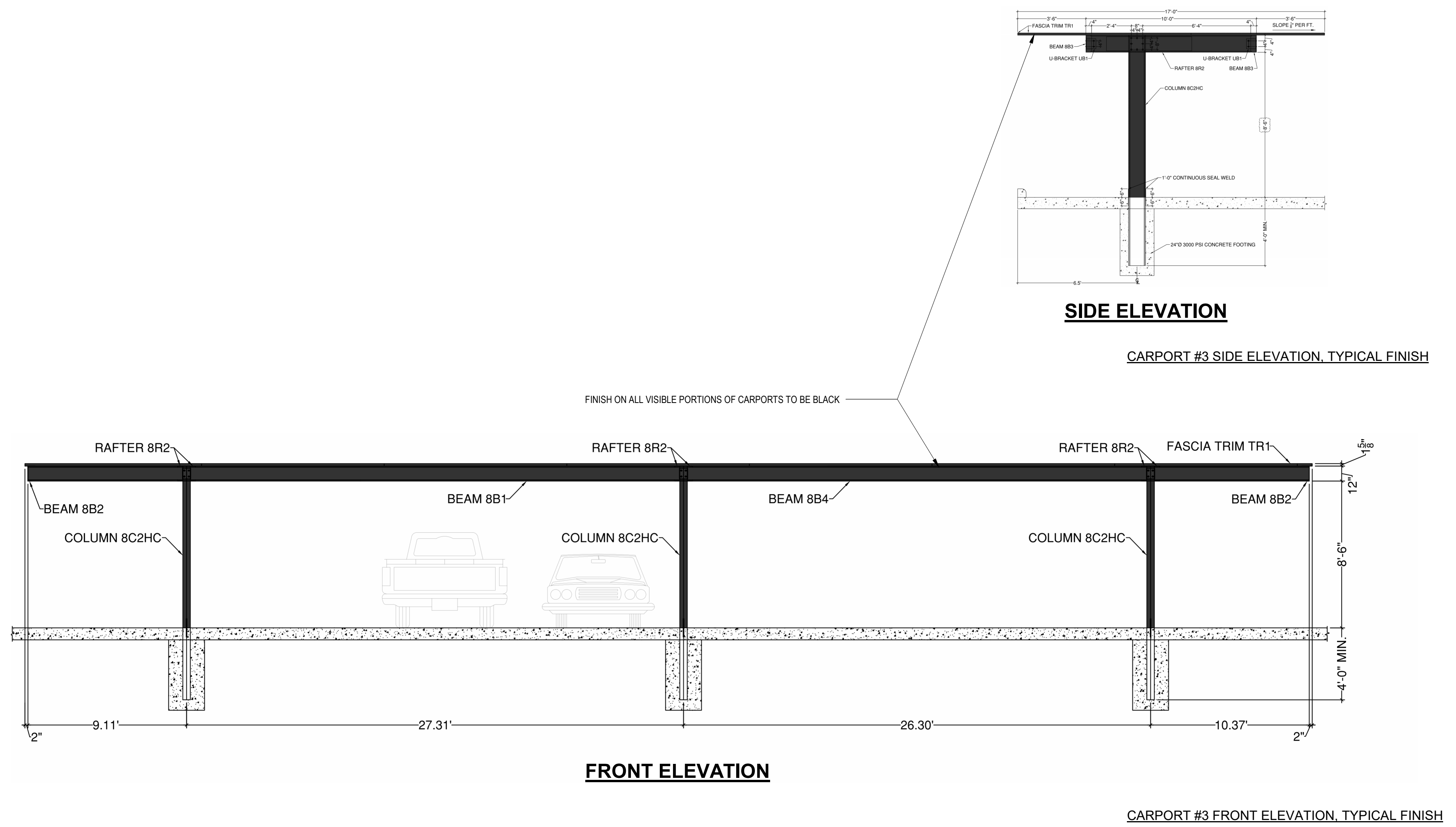


PROJECT  
**COMPARK  
 VILLAGE  
 SOUTH**

TOWN OF PARKER,  
 COUNTY  
 OF DOUGLAS, COLORADO  
 80134

SHEET TITLE  
**TYPICAL  
 CARPORT  
 ELEVATION**

SHEET NUMBER  
**A1-00**



COMPARK VILLAGE SOUTH  
F1 AMD 2 - MULTIFAMILY  
SITE PLAN

LOT 1, COMPARK VILLAGE FILING NO. 1, AMEND NO. 2  
SOUTH HALF SECTION 6, TOWNSHIP 6 SOUTH, RANGE 66 WEST OF THE 6TH PRINCIPAL MERIDIAN  
TOWN OF PARKER, COUNTY OF DOUGLAS, STATE OF COLORADO



GENERAL NOTES:

1. ANY PROPOSED LIGHT FIXTURES INSTALLED ON PRIVATE PROPERTY, ADJACENT TO THE PUBLIC RIGHT-OF-WAY, SHALL BE ORIENTED IN SUCH A MANNER OR LIMITED IN LUMEN OUTPUT TO PREVENT GLARE PROBLEMS AND SHALL NOT EXCEED NATIONAL I.E.S. LIGHTING STANDARDS FOR DISABILITY GLARE.

SITE LIGHT FIXTURE SCHEDULE

TYPE	SERVES	DESCRIPTION	MANUFACTURER CATALOG NO.	LAMPS	QUANTITY	NOTES
SA1	SITE	POLE MOUNTED FIXTURE	COOPER #PRV-C15-730-T5-SPB2	52	1	20'
SA2	SITE	POLE MOUNTED FIXTURE	COOPER #PRV-C15-730-T3-SPB2	52	24	20'
SA3	SITE	POLE MOUNTED FIXTURE	COOPER #PRV-C15-730-T3-SPB2 (DOUBLE)	52	4	20'
SA4	SITE	POLE MOUNTED FIXTURE	COOPER #PRV-C80-730-T4-SPB2	217	3	20'
SB	SITE	POLE MOUNTED FIXTURE	COOPER #PRV-C10-730-T3-SPB2	34.6	44	10'
SC	SITE	BOLLARD	METEOR #SP018-30K-BLK-WD-4S	0.7	10	10'
SF	SITE	WALL MOUNTED	COOPER #IST-SA1F-730-L-(T4W OR T4FT)-BK-SPB2	66	4	15'
SP	SITE	CARPORT MOUNTED	LEDALUX #CP-8.000-3000K	57	25	-
POLE (SA#, SB)	SITE	POLE	HAPCO #10 OR 20)-B-4-(D190 OR D218)-BA	-	76	10' AND 20'

REFER TO SITE PLAN SYMBOLS AND LIGHTING TAGS FOR LIGHT FIXTURE MOUNTING AND NUMBER OF FIXTURES PER POLE

CALCULATION SUMMARY

LABEL	UNITS	AVG	MAX	MIN	AVGMIN	MAXMIN
LANDSCAPE PATH	FC	1.22	4.0	0.1	12.2	40.0
LANDSCAPE RAMP	FC	1.01	2.5	0.3	3.37	8.33
LANDSCAPE STEPS	FC	0.96	1.8	0.5	1.92	3.60
PARKING	FC	2.03	4.8	0.8	2.54	6.00
PATH 1	FC	2.58	3.9	1.1	2.35	3.55
PATH 2	FC	1.92	3.4	0.8	2.40	4.25
PATH 3	FC	1.99	3.8	0.9	2.21	4.22
PATH 4	FC	1.67	3.3	1.1	1.52	3.00
PATH 5	FC	1.95	3.0	0.9	2.17	3.33
PATH 6	FC	2.21	5.0	0.5	4.42	10.0
PATH 7	FC	2.08	3.7	0.7	2.97	5.29
PROP LINE TRACT 2	FC	0.27	0.9	0.0	N.A.	N.A.
PROP LINE TRACT G	FC	0.06	0.9	0.0	N.A.	N.A.
POOL DECK	FC	14.58	22.0	10.3	1.42	2.14

1 SITE PHOTOMETRIC PLAN  
SCALE: 1" = 70'-0"

PROJECT NUMBER  
65120950  
  
DRAWN BY  
TV  
  
DATE  
11/21/2024

REVISIONS  
1 RFI 21  
2 CAR PORTS  
3 PHOTOMETRICS



PREPARED FOR CENTURY COMMUNITIES



PROJECT  
**COMPARK VILLAGE SOUTH**

TOWN OF PARKER, COUNTY OF DOUGLAS, COLORADO 80134

SHEET TITLE  
SITE PHOTOMETRIC PLAN & SCHEDULES

SHEET NUMBER  
51

Specification

ADVANCED HIGH CEILING  
**SP-018/SP-018s** - Smart Illuminating Bollard  
Motion Sensor / No Wiring



Quantity
Project
Note
Type

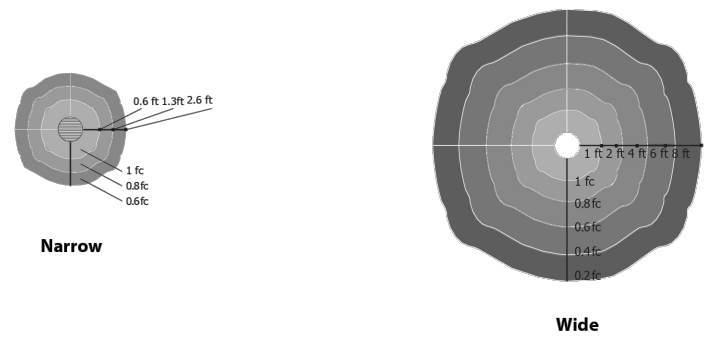
**General**  
Housing: Extruded aluminum  
Finish: Black, Grey, Platinum silver  
Mounting: Embedded, Surface mounted (please refer to installation guide)  
Anchorage: Anchor base with stainless steel anti-theft screws

**Operational**  
Average Sunlight Exposure: 2-3 Hours(sunny) to 5-8 hours(overcast or rainy) to Maintain Function\*  
Average Operation Time: Minimum 12 hours (extra stored power will carry over to next day)  
Solar Deprivation Limit: 5 days\*  
Switch: Auto photo sensor  
On/Off Level: 1.5 / 3 footcandle  
Temperature Range: -40° F to 176° F  
Distribution: Narrow or Wide  
Weight: 44.1 lbs (SP-018) / 33.1 lbs (SP-018s)  
\*10 maintain function, unit requires 2-4 hour (sunny) to 5-8 hour (overcast/rainy) of full exposure. Extra charge will be restored for next day use. Fully charged, the unit can last 3-4 rainy days.

**Solar LED Specification**  
Solar Panel: Crystalline silicon  
Lifespan of Solar Panel: 20 yrs  
LED Brand: Nichia  
Available LED colors: White(5700K), Neutral White(4000K), Warm White(3000K), Amber  
LED Rated Life: > 60,000 Hours (L70)  
Power Storage: Panasonic industrial battery pack(Lifespan: 4-6 years)

**Warranty**  
3 year limited warranty. See [www.meteor-lighting.com](http://www.meteor-lighting.com) for details.

**Distribution**



METEOR LIGHTING P: 213.255.2060 F: 213.596.3704 [www.meteor-lighting.com](http://www.meteor-lighting.com) Page 1  
\*METEOR LIGHTING reserves the right to make changes to this product at any time without prior notice and such modification shall be effective immediately.

## SITE LIGHT FIXTURE 'SC'

Specification

ADVANCED HIGH CEILING  
**SP-018/SP-018s** - Smart Illuminating Bollard  
Motion Sensor / No Wiring

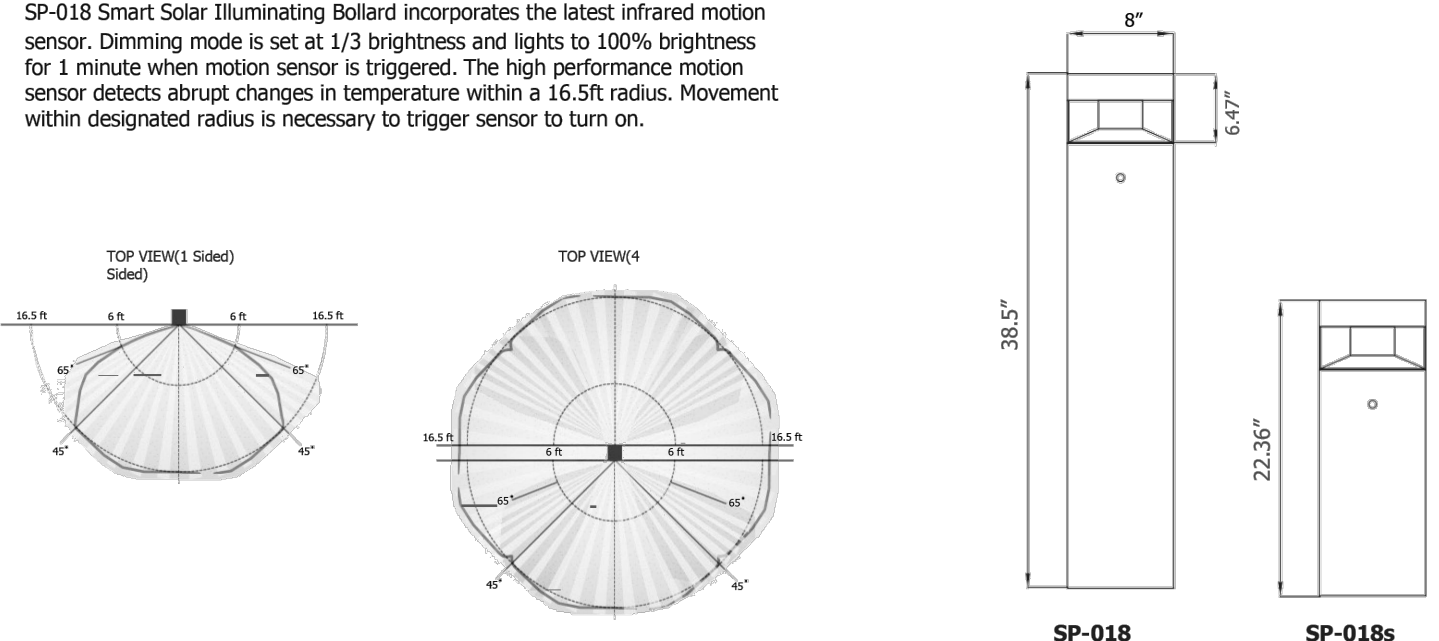


**How To Specify**  
Ordering Example: **SP018-30K-BLK-NR-AKE-1S**

Model	CCT	Finish	Distribution	Anchorage	Optional
SP018	30K (3000K)	BLK (Black)	NR (Narrow)	AKE (Embedded)	1S (1 Sensor)
SP018s	40K (4000K) 57K (5700K) AMB (Amber)	GRY (Gray) PTS (Platinum silver)	WD (Wide)	AKS (Surface Mounted)	4S (4 Sensor)

**Motion Sensor Detection type**  
SP-018 Smart Solar Illuminating Bollard incorporates the latest infrared motion sensor. Dimming mode is set at 1/3 brightness and lights to 100% brightness for 1 minute when motion sensor is triggered. The high performance motion sensor detects abrupt changes in temperature within a 16.5ft radius. Movement within designated radius is necessary to trigger sensor to turn on.

Dimensions



METEOR LIGHTING P: 213.255.2060 F: 213.596.3704 [www.meteor-lighting.com](http://www.meteor-lighting.com) Page 2  
\*METEOR LIGHTING reserves the right to make changes to this product at any time without prior notice and such modification shall be effective immediately.

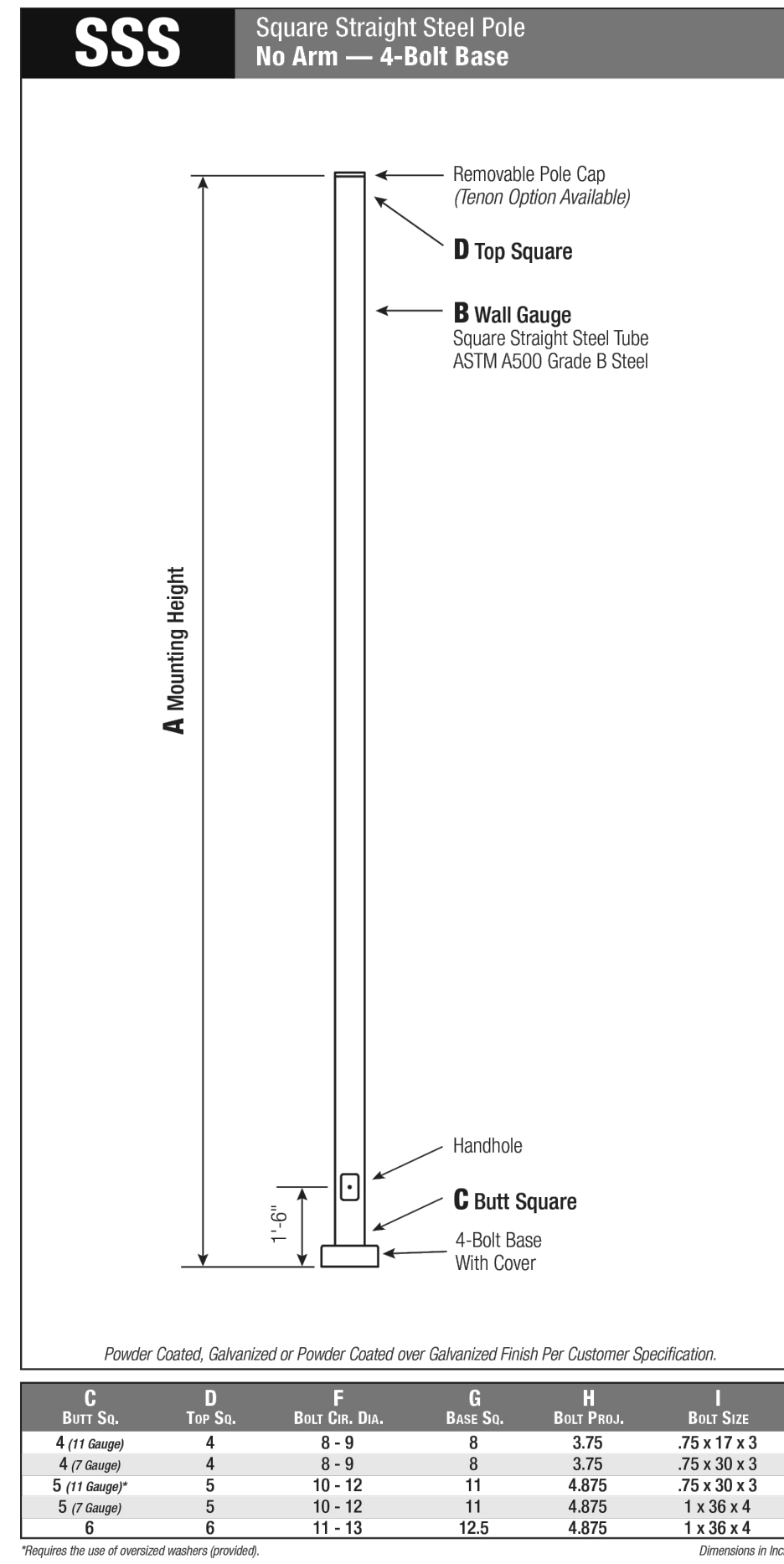
## COMPARK VILLAGE SOUTH F1 AMD 2 - MULTIFAMILY SITE PLAN

LOT 1, COMPARK VILLAGE FILING NO. 1, AMEND NO. 2  
SOUTH HALF SECTION 6, TOWNSHIP 6 SOUTH, RANGE 66 WEST OF THE 6TH PRINCIPAL MERIDIAN  
TOWN OF PARKER, COUNTY OF DOUGLAS, STATE OF COLORADO

### SITE LIGHT FIXTURE SCHEDULE

TYPE	SERVES	DESCRIPTION	MANUFACTURER CATALOG NO.	LAMPS	QUANTITY	NOTES
SA1	SITE	POLE MOUNTED FIXTURE	COOPER #PRV-C15-730-T5-SPB2	52	1	20'
SA2	SITE	POLE MOUNTED FIXTURE	COOPER #PRV-C15-730-T3-SPB2	52	24	20'
SA3	SITE	POLE MOUNTED FIXTURE	COOPER #PRV-C15-730-T3-SPB2 (DOUBLE)	52	4	20'
SA4	SITE	POLE MOUNTED FIXTURE	COOPER #PRV-C60-730-T4-SPB2	217	3	20'
SB	SITE	POLE MOUNTED FIXTURE	COOPER #PRV-C10-730-T3-SPB2	34.6	44	10'
SC	SITE	BOLLARD	METEOR #SP018-30K-BLK-WD-4S	0.7	10	10'
SF	SITE	WALL MOUNTED	COOPER #IST-SA1F-730-U-(T4W OR T4FT)-BK-SPB2	66	4	15'
SP	SITE	CARPORT MOUNTED	LEDALUX #CP-8.000-3000K	57	25	-
POLE (SA#, SB)	SITE	POLE	HAPCO #10 OR 20-B-4-(D190 OR D218)-BA	-	76	10' AND 20'

REFER TO SITE PLAN SYMBOLS AND LIGHTING TAGS FOR LIGHT FIXTURE MOUNTING AND NUMBER OF FIXTURES PER POLE



**Pole**  
Pole shaft shall be weather-grade, cold-rolled, commercial quality carbon steel tubing conforming to ASTM A500 Grade B. Options include 11 gauge and 7 gauge. All welds shall conform to AWS D1.1 using ER70S-6 electrodes.

**Base Style**  
4-Bolt Steel Plate Base Flange of fabricated hot rolled carbon steel conforming to ASTM A500 or equivalent (50ksi minimum yield) with 2-piece Base Cover and anchoring hardware.

**Anchorage**  
Anchorage Kit will include four (4) L-shaped Steel Anchor Bolts conforming to AASHTO M14-190 Grade 55. Ten inches (10") of threaded end will be galvanized per ASTM A153. Kits will contain eight (8) Hex Nuts, four (4) Lock Washers, and eight (8) Flat Washers (all components Galvanized Steel). A paper bolt circle template will be provided.

**Handhole**  
Reinforced, 3" x 5" Handhole with cover, stainless steel screw and backlock. A grounding provision incorporating a tapered 1/2" - 1/8" hole will be provided.

**Base Cover**  
Square ABS plastic Base Covers are standard on all SSS poles specified in BA, Black, BM, Dark Bronze and BS, White. SSS poles specified in all other colors will be manufactured of metal materials. Custom specification of SSS square metal style Base Covers in BA, BM and BS powder coated finishes is available.

**Vibration Damper**  
If determined necessary by Hapco, or if specified by the customer, a first and/or second mode vibration damper will be provided.

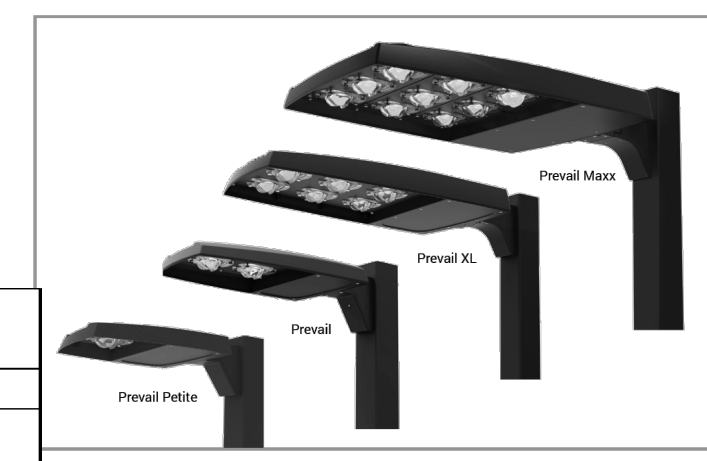
C	D	F	G	H	I
Butt Dia.	Top Dia.	Butt Dia. Dia.	Base Dia.	Butt Dia.	Butt Dia.
4 (1/4 Gauge)	4	8 - 9	8	3.75	.75 x 17 x 3
4 (1/2 Gauge)	4	8 - 9	8	3.75	.75 x 30 x 3
5 (1/4 Gauge)	5	10 - 12	11	4.875	.75 x 30 x 3
5 (1/2 Gauge)	5	10 - 12	11	4.875	1 x 36 x 4
6	6	11 - 13	12.5	4.875	1 x 36 x 4

Requires the use of oversized nut/washer provided.

2 [www.hapco.com](http://www.hapco.com)

**WARNING:** Do not install light pole without luminaires.

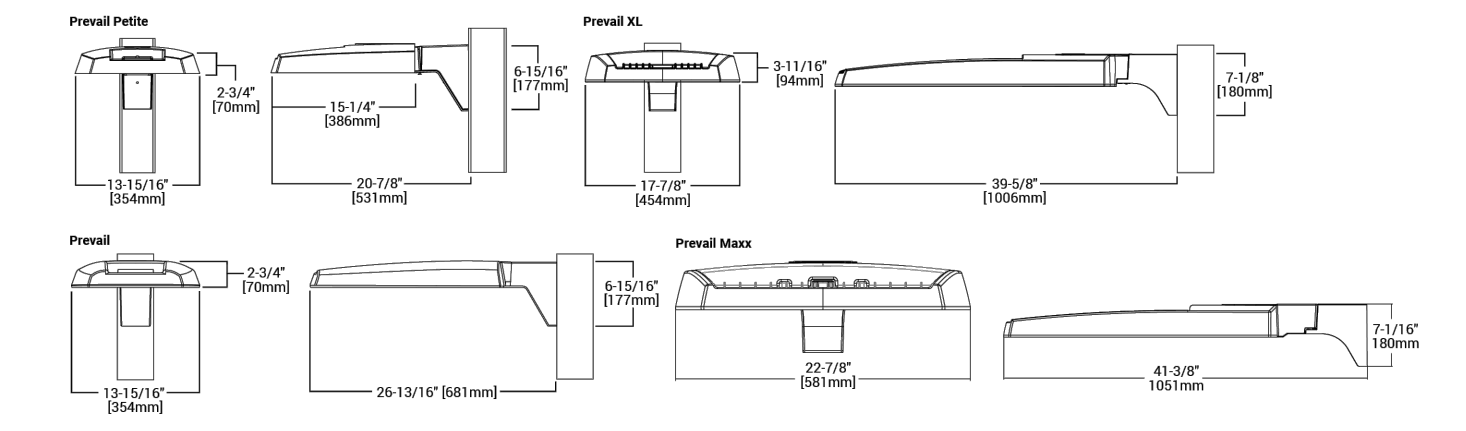
Project	Catalog #	Type
Prepared by	Notes	Date



- Interactive Menu**
- Ordering Information page 2
  - Mounting Details page 3, 4
  - Optical Configurations page 5
  - Product Specifications page 5
  - Energy and Performance Data page 6, 7
  - Control Options page 8

- Quick Facts**
- Lumen packages range from 4,800 - 84,000 lumens (35W - 68W)
  - Replaces 70W up to 1,000W HID equivalents
  - Efficacies up to 160 lumens per watt
  - Energy and maintenance savings up to 85% versus HID solutions
  - Standard universal quick mount arm with universal drill pattern

Dimensional Details



NOTE: 1. Visit [www.cooperlighting.com](http://www.cooperlighting.com) to confirm specification. Not all product variations are UL qualified.  
2. UL Certified for 200K CEC and warmer only.



## SITE LIGHT FIXTURE 'SA1, SA2, SA3, SA4, & SB'

### Lumark Preval LED

Ordering Information  
SAMPLE NUMBER: **PRV-XL-C75-D-UNV-T4-SA-BZ**

Product Family	Light Engine	Color Temperature	Driver	Voltage	Distribution	Mounting	Color
PRV-P-Preval Polo	C15-1 LED 4,800 Nominal Lumens	740-700K, 4000K	D-Dimming (0-10V)	UNV-Universal (120-277V)	T2-Type II	SA-OM Standard Arm Mount	BZ-Bronze
BAA-PRV-P-Preval Polo BAA Compliant	C25-1 LED 13,100 Nominal Lumens	727-702K, 2700K		UNV-Universal (120-277V)	T2-Type II	AP-Clay	AP-Clay
TAA-PRV-P-Preval Polo TAA Compliant	C25-1 LED 13,100 Nominal Lumens	727-702K, 2700K		UNV-Universal (120-277V)	T2-Type II	MA-OM Mast Arm Mount	BK-Black
PRV-P-Preval XL	C15-1 LED 4,800 Nominal Lumens	740-700K, 4000K		UNV-Universal (120-277V)	T4-Type IV	MA-OM Mast Arm Mount	DP-Dark Platinum
BAA-PRV-P-Preval XL BAA Compliant	C25-1 LED 13,100 Nominal Lumens	727-702K, 2700K		UNV-Universal (120-277V)	T4-Type IV	MA-OM Mast Arm Mount	MA-White
TAA-PRV-P-Preval XL TAA Compliant	C25-1 LED 13,100 Nominal Lumens	727-702K, 2700K		UNV-Universal (120-277V)	T4-Type IV	MA-OM Mast Arm Mount	MA-White
PRV-M-Preval Max	C25-1 LED 13,100 Nominal Lumens	740-700K, 4000K		UNV-Universal (120-277V)	T4-Type IV	MA-OM Mast Arm Mount	MA-White
BAA-PRV-M-Preval Max BAA Compliant	C25-1 LED 13,100 Nominal Lumens	740-700K, 4000K		UNV-Universal (120-277V)	T4-Type IV	MA-OM Mast Arm Mount	MA-White
TAA-PRV-M-Preval Max TAA Compliant	C25-1 LED 13,100 Nominal Lumens	740-700K, 4000K		UNV-Universal (120-277V)	T4-Type IV	MA-OM Mast Arm Mount	MA-White

Options (Add as Suffix)

7050-70 CRI / 3000K CCT	SPB1-Dimming Motion and Daylight Sensor, Bluetooth Programmable, 4" Mounting Height	PRVSA-XX-Standard Arm Mounting Kit	MA197-XX-Single Tension Adapter for 3-1/2" O.D. T5C Tension
7050-70 CRI / 3000K CCT	SPB2-Dimming Motion and Daylight Sensor, Bluetooth Programmable, 7" Mounting Height	PRVSA-XX-Adjustable Arm Mounting Kit	MA198-XX-2x180" Tension Adapter for 3-1/2" O.D. T5C Tension
ICE-Ceiling Installation Flash	SPB3-Dimming Motion and Daylight Sensor, Bluetooth Programmable, 7" Mounting Height	PRVSA-XX-Adjustable Arm Mounting Kit	MA199-XX-2x180" Tension Adapter for 3-1/2" O.D. T5C Tension
LSG-Optic Rotated 90° Left	SPB4-Dimming Motion and Daylight Sensor, Bluetooth Programmable, 7" Mounting Height	PRVSA-XX-Adjustable Arm Mounting Kit	MA200-XX-2x180" Tension Adapter for 3-1/2" O.D. T5C Tension
LSG-Optic Rotated 90° Right	SPB5-Dimming Motion and Daylight Sensor, Bluetooth Programmable, 7" Mounting Height	PRVSA-XX-Adjustable Arm Mounting Kit	MA201-XX-2x180" Tension Adapter for 3-1/2" O.D. T5C Tension
MS-Optic Rotated 90° Left	SPB6-Dimming Motion and Daylight Sensor, Bluetooth Programmable, 7" Mounting Height	PRVSA-XX-Adjustable Arm Mounting Kit	MA202-XX-2x180" Tension Adapter for 3-1/2" O.D. T5C Tension
MS-Optic Rotated 90° Right	SPB7-Dimming Motion and Daylight Sensor, Bluetooth Programmable, 7" Mounting Height	PRVSA-XX-Adjustable Arm Mounting Kit	MA203-XX-2x180" Tension Adapter for 3-1/2" O.D. T5C Tension
MS-Optic Rotated 90° Left	SPB8-Dimming Motion and Daylight Sensor, Bluetooth Programmable, 7" Mounting Height	PRVSA-XX-Adjustable Arm Mounting Kit	MA204-XX-2x180" Tension Adapter for 3-1/2" O.D. T5C Tension
MS-Optic Rotated 90° Right	SPB9-Dimming Motion and Daylight Sensor, Bluetooth Programmable, 7" Mounting Height	PRVSA-XX-Adjustable Arm Mounting Kit	MA205-XX-2x180" Tension Adapter for 3-1/2" O.D. T5C Tension
MS-Optic Rotated 90° Left	SPB10-Dimming Motion and Daylight Sensor, Bluetooth Programmable, 7" Mounting Height	PRVSA-XX-Adjustable Arm Mounting Kit	MA206-XX-2x180" Tension Adapter for 3-1/2" O.D. T5C Tension
MS-Optic Rotated 90° Right	SPB11-Dimming Motion and Daylight Sensor, Bluetooth Programmable, 7" Mounting Height	PRVSA-XX-Adjustable Arm Mounting Kit	MA207-XX-2x180" Tension Adapter for 3-1/2" O.D. T5C Tension
MS-Optic Rotated 90° Left	SPB12-Dimming Motion and Daylight Sensor, Bluetooth Programmable, 7" Mounting Height	PRVSA-XX-Adjustable Arm Mounting Kit	MA208-XX-2x180" Tension Adapter for 3-1/2" O.D. T5C Tension
MS-Optic Rotated 90° Right	SPB13-Dimming Motion and Daylight Sensor, Bluetooth Programmable, 7" Mounting Height	PRVSA-XX-Adjustable Arm Mounting Kit	MA209-XX-2x180" Tension Adapter for 3-1/2" O.D. T5C Tension
MS-Optic Rotated 90° Left	SPB14-Dimming Motion and Daylight Sensor, Bluetooth Programmable, 7" Mounting Height	PRVSA-XX-Adjustable Arm Mounting Kit	MA210-XX-2x180" Tension Adapter for 3-1/2" O.D. T5C Tension
MS-Optic Rotated 90° Right	SPB15-Dimming Motion and Daylight Sensor, Bluetooth Programmable, 7" Mounting Height	PRVSA-XX-Adjustable Arm Mounting Kit	MA211-XX-2x180" Tension Adapter for 3-1/2" O.D. T5C Tension
MS-Optic Rotated 90° Left	SPB16-Dimming Motion and Daylight Sensor, Bluetooth Programmable, 7" Mounting Height	PRVSA-XX-Adjustable Arm Mounting Kit	MA212-XX-2x180" Tension Adapter for 3-1/2" O.D. T5C Tension
MS-Optic Rotated 90° Right	SPB17-Dimming Motion and Daylight Sensor, Bluetooth Programmable, 7" Mounting Height	PRVSA-XX-Adjustable Arm Mounting Kit	MA213-XX-2x180" Tension Adapter for 3-1/2" O.D. T5C Tension
MS-Optic Rotated 90° Left	SPB18-Dimming Motion and Daylight Sensor, Bluetooth Programmable, 7" Mounting Height	PRVSA-XX-Adjustable Arm Mounting Kit	MA214-XX-2x180" Tension Adapter for 3-1/2" O.D. T5C Tension
MS-Optic Rotated 90° Right	SPB19-Dimming Motion and Daylight Sensor, Bluetooth Programmable, 7" Mounting Height	PRVSA-XX-Adjustable Arm Mounting Kit	MA215-XX-2x180" Tension Adapter for 3-1/2" O.D. T5C Tension
MS-Optic Rotated 90° Left	SPB20-Dimming Motion and Daylight Sensor, Bluetooth Programmable, 7" Mounting Height	PRVSA-XX-Adjustable Arm Mounting Kit	MA216-XX-2x180" Tension Adapter for 3-1/2" O.D. T5C Tension
MS-Optic Rotated 90° Right	SPB21-Dimming Motion and Daylight Sensor, Bluetooth Programmable, 7" Mounting Height	PRVSA-XX-Adjustable Arm Mounting Kit	MA217-XX-2x180" Tension Adapter for 3-1/2" O.D. T5C Tension
MS-Optic Rotated 90° Left	SPB22-Dimming Motion and Daylight Sensor, Bluetooth Programmable, 7" Mounting Height	PRVSA-XX-Adjustable Arm Mounting Kit	MA218-XX-2x180" Tension Adapter for 3-1/2" O.D. T5C Tension
MS-Optic Rotated 90° Right	SPB23-Dimming Motion and Daylight Sensor, Bluetooth Programmable, 7" Mounting Height	PRVSA-XX-Adjustable Arm Mounting Kit	MA219-XX-2x180" Tension Adapter for 3-1/2" O.D. T5C Tension
MS-Optic Rotated 90° Left	SPB24-Dimming Motion and Daylight Sensor, Bluetooth Programmable, 7" Mounting Height	PRVSA-XX-Adjustable Arm Mounting Kit	MA220-XX-2x180" Tension Adapter for 3-1/2" O.D. T5C Tension
MS-Optic Rotated 90° Right	SPB25-Dimming Motion and Daylight Sensor, Bluetooth Programmable, 7" Mounting Height	PRVSA-XX-Adjustable Arm Mounting Kit	MA221-XX-2x180" Tension Adapter for 3-1/2" O.D. T5C Tension
MS-Optic Rotated 90° Left	SPB26-Dimming Motion and Daylight Sensor, Bluetooth Programmable, 7" Mounting Height	PRVSA-XX-Adjustable Arm Mounting Kit	MA222-XX-2x180" Tension Adapter for 3-1/2" O.D. T5C Tension
MS-Optic Rotated 90° Right	SPB27-Dimming Motion and Daylight Sensor, Bluetooth Programmable, 7" Mounting Height	PRVSA-XX-Adjustable Arm Mounting Kit	MA223-XX-2x180" Tension Adapter for 3-1/2" O.D. T5C Tension
MS-Optic Rotated 90° Left	SPB28-Dimming Motion and Daylight Sensor, Bluetooth Programmable, 7" Mounting Height	PRVSA-XX-Adjustable Arm Mounting Kit	MA224-XX-2x180" Tension Adapter for 3-1/2" O.D. T5C Tension
MS-Optic Rotated 90° Right	SPB29-Dimming Motion and Daylight Sensor, Bluetooth Programmable, 7" Mounting Height	PRVSA-XX-Adjustable Arm Mounting Kit	MA225-XX-2x180" Tension Adapter for 3-1/2" O.D. T5C Tension
MS-Optic Rotated 90° Left	SPB30-Dimming Motion and Daylight Sensor, Bluetooth Programmable, 7" Mounting Height	PRVSA-XX-Adjustable Arm Mounting Kit	MA226-XX-2x180" Tension Adapter for 3-1/2" O.D. T5C Tension
MS-Optic Rotated 90° Right	SPB31-Dimming Motion and Daylight Sensor, Bluetooth Programmable, 7" Mounting Height	PRVSA-XX-Adjustable Arm Mounting Kit	MA227-XX-2x180" Tension Adapter for 3-1/2" O.D. T5C Tension
MS-Optic Rotated 90° Left	SPB32-Dimming Motion and Daylight Sensor, Bluetooth Programmable, 7" Mounting Height	PRVSA-XX-Adjustable Arm Mounting Kit	MA228-XX-2x180" Tension Adapter for 3-1/2" O.D. T5C Tension
MS-Optic Rotated 90° Right	SPB33-Dimming Motion and Daylight Sensor, Bluetooth Programmable, 7" Mounting Height	PRVSA-XX-Adjustable Arm Mounting Kit	MA229-XX-2x180" Tension Adapter for 3-1/2" O.D. T5C Tension
MS-Optic Rotated 90° Left	SPB34-Dimming Motion and Daylight Sensor, Bluetooth Programmable, 7" Mounting Height	PRVSA-XX-Adjustable Arm Mounting Kit	MA230-XX-2x180" Tension Adapter for 3-1/2" O.D. T5C Tension
MS-Optic Rotated 90° Right	SPB35-Dimming Motion and Daylight Sensor, Bluetooth Programmable, 7" Mounting Height	PRVSA-XX-Adjustable Arm Mounting Kit	MA231-XX-2x180" Tension Adapter for 3-1/2" O.D. T5C Tension
MS-Optic Rotated 90° Left	SPB36-Dimming Motion and Daylight Sensor, Bluetooth Programmable, 7" Mounting Height	PRVSA-XX-Adjustable Arm Mounting Kit	MA232-XX-2x180" Tension Adapter for 3-1/2" O.D. T5C Tension
MS-Optic Rotated 90° Right	SPB37-Dimming Motion and Daylight Sensor, Bluetooth Programmable, 7" Mounting Height	PRVSA-XX-Adjustable Arm Mounting Kit	MA233-XX-2x180" Tension Adapter for 3-1/2" O.D. T5C Tension
MS-Optic Rotated 90° Left	SPB38-Dimming Motion and Daylight Sensor, Bluetooth Programmable, 7" Mounting Height	PRVSA-XX-Adjustable Arm Mounting Kit	MA234-XX-2x180" Tension Adapter for 3-1/2" O.D. T5C Tension
MS-Optic Rotated 90° Right	SPB39-Dimming Motion and Daylight Sensor, Bluetooth Programmable, 7" Mounting Height	PRVSA-XX-Adjustable Arm Mounting Kit	MA235-XX-2x180" Tension Adapter for 3-1/2" O.D. T5C Tension
MS-Optic Rotated 90° Left	SPB40-Dimming Motion and Daylight Sensor, Bluetooth Programmable, 7" Mounting Height	PRVSA-XX-Adjustable Arm Mounting Kit	MA236-XX-2x180" Tension Adapter for 3-1/2" O.D. T5C Tension
MS-Optic Rotated 90° Right	SPB41-Dimming Motion and Daylight Sensor, Bluetooth Programmable, 7" Mounting Height	PRVSA-XX-Adjustable Arm Mounting Kit	MA237-XX-2x180" Tension Adapter for 3-1/2" O.D. T5C Tension
MS-Optic Rotated 90° Left	SPB42-Dimming Motion and Daylight Sensor, Bluetooth Programmable, 7" Mounting Height	PRVSA-XX-Adjustable Arm Mounting Kit	MA238-XX-2x180" Tension Adapter for 3-1/2" O.D. T5C Tension
MS-Optic Rotated 90° Right	SPB43-Dimming Motion and Daylight Sensor, Bluetooth Programmable, 7" Mounting Height	PRVSA-XX-Adjustable Arm Mounting Kit	MA239-XX-2x180" Tension Adapter for 3-1/2" O.D. T5C Tension
MS-Optic Rotated 90° Left	SPB44-Dimming Motion and Daylight Sensor, Bluetooth Programmable, 7" Mounting Height	PRVSA-XX-Adjustable Arm Mounting Kit	MA240-XX-2x180" Tension Adapter for 3-1/2" O.D. T5C Tension
MS-Optic Rotated 90° Right	SPB45-Dimming Motion and Daylight Sensor, Bluetooth Programmable, 7" Mounting Height	PRVSA-XX-Adjustable Arm Mounting Kit	MA241-XX-2x180" Tension Adapter for 3-1/2" O.D. T5C Tension
MS-Optic Rotated 90° Left	SPB46-Dimming Motion and Daylight Sensor, Bluetooth Programmable, 7" Mounting Height	PRVSA-XX-Adjustable Arm Mounting Kit	MA242-XX-2x180" Tension Adapter for 3-1/2" O.D. T5C Tension
MS-Optic Rotated 90° Right	SPB47-Dimming Motion and Daylight Sensor, Bluetooth Programmable, 7" Mounting Height	PRVSA-XX-Adjustable Arm Mounting Kit	MA243-XX-2x180" Tension Adapter for 3-1/2" O.D. T5C Tension
MS-Optic Rotated 90° Left	SPB48-Dimming Motion and Daylight Sensor, Bluetooth Programmable, 7" Mounting Height	PRVSA-XX-Adjustable Arm Mounting Kit	MA244-XX-2x180" Tension Adapter for 3-1/2" O.D. T5C Tension
MS-Optic Rotated 90° Right	SPB49-Dimming Motion and Daylight Sensor, Bluetooth Programmable, 7" Mounting Height	PRVSA-XX-Adjustable Arm Mounting Kit	MA245-XX-2x180" Tension Adapter for 3-1/2" O.D. T5C Tension
MS-Optic Rotated 90° Left	SPB50-Dimming Motion and Daylight Sensor, Bluetooth Programmable, 7" Mounting Height	PRVSA-XX-Adjustable Arm Mounting Kit	MA246-XX-2x180" Tension Adapter for 3-1/2" O.D. T5C Tension
MS-Optic Rotated 90° Right	SPB51-Dimming Motion and Daylight Sensor, Bluetooth Programmable, 7" Mounting Height	PRVSA-XX-Adjustable Arm Mounting Kit	MA247-XX-2x180" Tension Adapter for 3-1/2" O.D. T5C Tension
MS-Optic Rotated 90° Left	SPB52-Dimming Motion and Daylight Sensor, Bluetooth Programmable, 7" Mounting Height	PRVSA-XX-Adjustable Arm Mounting Kit	MA248-XX-2x180" Tension Adapter for 3-1/2" O.D. T5C Tension
MS-Optic Rotated 90° Right	SPB53-Dimming Motion and Daylight Sensor, Bluetooth Programmable, 7" Mounting Height	PRVSA-XX-Adjustable Arm Mounting Kit	MA249-XX-2x180" Tension Adapter for 3-1/2" O.D. T5C Tension
MS-Optic Rotated 90° Left	SPB54-Dimming Motion and Daylight Sensor, Bluetooth Programmable, 7" Mounting Height	PRVSA-XX-Adjustable Arm Mounting Kit	MA250-XX-2x180" Tension Adapter for 3-1/2" O.D. T5C Tension
MS-Optic Rotated 90° Right	SPB55-Dimming Motion and Daylight Sensor, Bluetooth Programmable, 7" Mounting Height	PRVSA-XX-Adjustable Arm Mounting Kit	MA251-XX-2x180" Tension Adapter for 3-1/2" O.D. T5C Tension
MS-Optic Rotated 90° Left	SPB56-Dimming Motion and Daylight Sensor, Bluetooth Programmable, 7" Mounting Height	PRVSA-XX-Adjustable Arm Mounting Kit	MA252-XX-2x180" Tension Adapter for 3-1/2" O.D. T5C Tension
MS-Optic Rotated 90° Right	SPB5		

