

COMPARK VILLAGE SOUTH
F1 AMD 2 - MULTIFAMILY
SITE PLAN

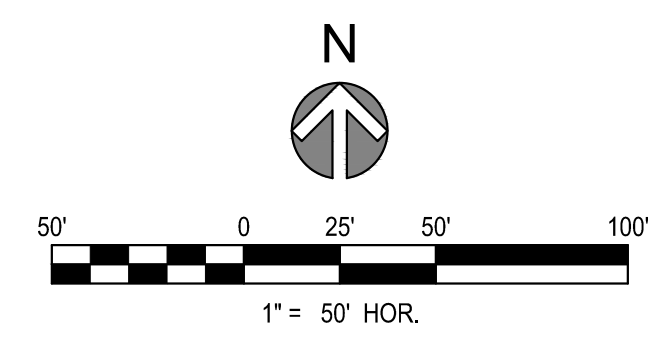
LOT 1, COMPARK VILLAGE FILING NO. 1, AMEND NO. 2
SOUTH HALF SECTION 6, TOWNSHIP 6 SOUTH, RANGE 66 WEST OF THE 6TH PRINCIPAL MERIDIAN
TOWN OF PARKER, COUNTY OF DOUGLAS, STATE OF COLORADO

PROJECT NUMBER
65120950

DRAWN BY
TV

DATE
04/01/2025

REVISIONS
1 RFI 21
2 CAR PORTS
3 EV CHARGERS



LEGEND / KEYNOTES

- PARKING SPACE COUNT
- PROPERTY LINE
- SIGN
- R1-1 (30' x 30')
- R7-8 (12' x 18')
- R7-8 P (12' x 9')
- R7-1 (SP) (12' x 18')
- R2-1 (SP) (12' x 18')
- EV CHARGER
- PAVEMENT MARKING OF INTERNATIONAL SYMBOL OF ACCESSIBILITY
- CAR PORT
- EV CHARGER

NOTES
1. DIMENSIONS ARE TO FLOWLINE UNLESS OTHERWISE NOTED.



PREPARED FOR CENTURY COMMUNITIES



PROJECT
COMPARK VILLAGE SOUTH

TOWN OF PARKER, COUNTY OF DOUGLAS, COLORADO 80134

SHEET TITLE
SITE PLAN

SHEET NUMBER
3

MATCH LINE SEE SHEET 4

COMPARK VILLAGE SOUTH
F1 AMD 2 - MULTIFAMILY
SITE PLAN

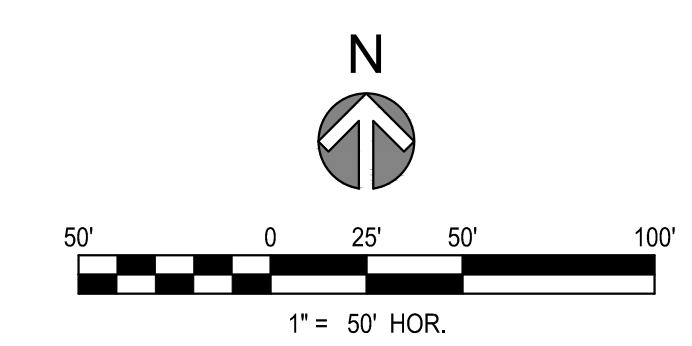
LOT 1, COMPARK VILLAGE FILING NO. 1, AMEND NO. 2
SOUTH HALF SECTION 6, TOWNSHIP 6 SOUTH, RANGE 66 WEST OF THE 6TH PRINCIPAL MERIDIAN
TOWN OF PARKER, COUNTY OF DOUGLAS, STATE OF COLORADO

PROJECT NUMBER
65120950

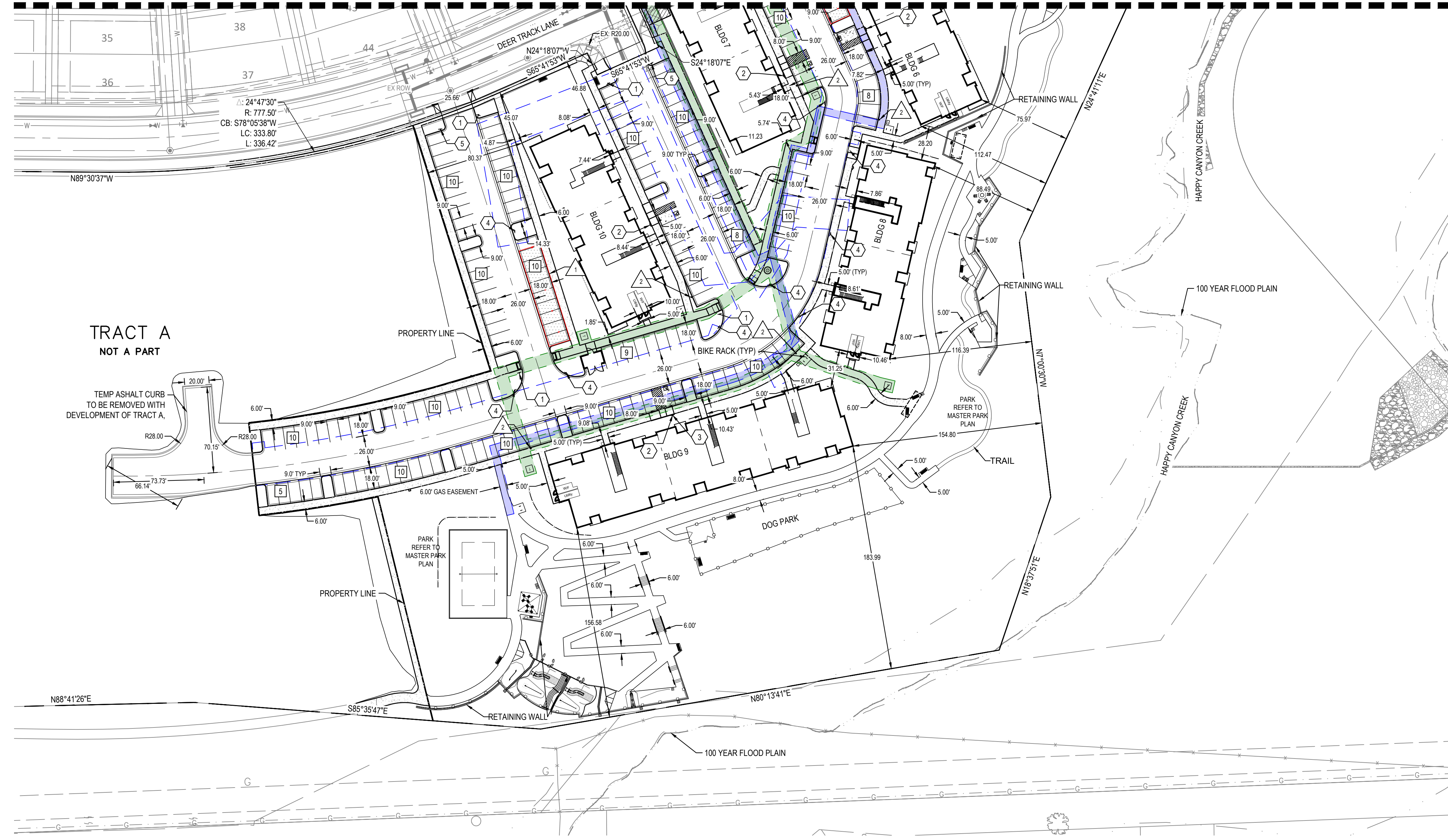
DRAWN BY
TV

DATE
04/01/2025

REVISIONS
1 RFI 21
2 CAR PORTS
3 EV CHARGERS



MATCH LINE SEE SHEET 3



LEGEND / KEYNOTES

- PARKING SPACE COUNT
- PROPERTY LINE
- SIGN
- R1-1 (30' x 30')
- R7-8 (12' x 18')
- R7-8 P (12' x 9')
- R7-1 (SP) (12' x 18')
- R2-1 (SP) (12' x 18')
- EV CHARGER
- PAVEMENT MARKING OF INTERNATIONAL SYMBOL OF ACCESSIBILITY
- CAR PORT
- EV CHARGER

NOTES

1. DIMENSIONS ARE TO FLOWLINE UNLESS OTHERWISE NOTED.

PREPARED FOR CENTURY COMMUNITIES



PROJECT
COMPARK VILLAGE SOUTH

TOWN OF PARKER, COUNTY OF DOUGLAS, COLORADO 80134

SHEET TITLE
SITE PLAN

SHEET NUMBER
4

COMPARK VILLAGE SOUTH
 F1 AMD 2 - MULTIFAMILY
 SITE PLAN
 LOT 2, COMPARK VILLAGE FILING NO. 1, AMEND NO. 2
 SOUTH HALF SECTION 6, TOWNSHIP 6 SOUTH, RANGE 66 WEST OF THE 6TH PRINCIPAL MERIDIAN
 TOWN OF PARKER, COUNTY OF DOUGLAS, STATE OF COLORADO

PROJECT NUMBER
 210512
 DRAWN BY

 DATE
 03/11/2025



Architecture + Planning
 820 16th Street, Suite 500
 Denver, CO 80202
 ktgy.com
 303.825.6400

PREPARED FOR CENTURY
 COMMUNITIES

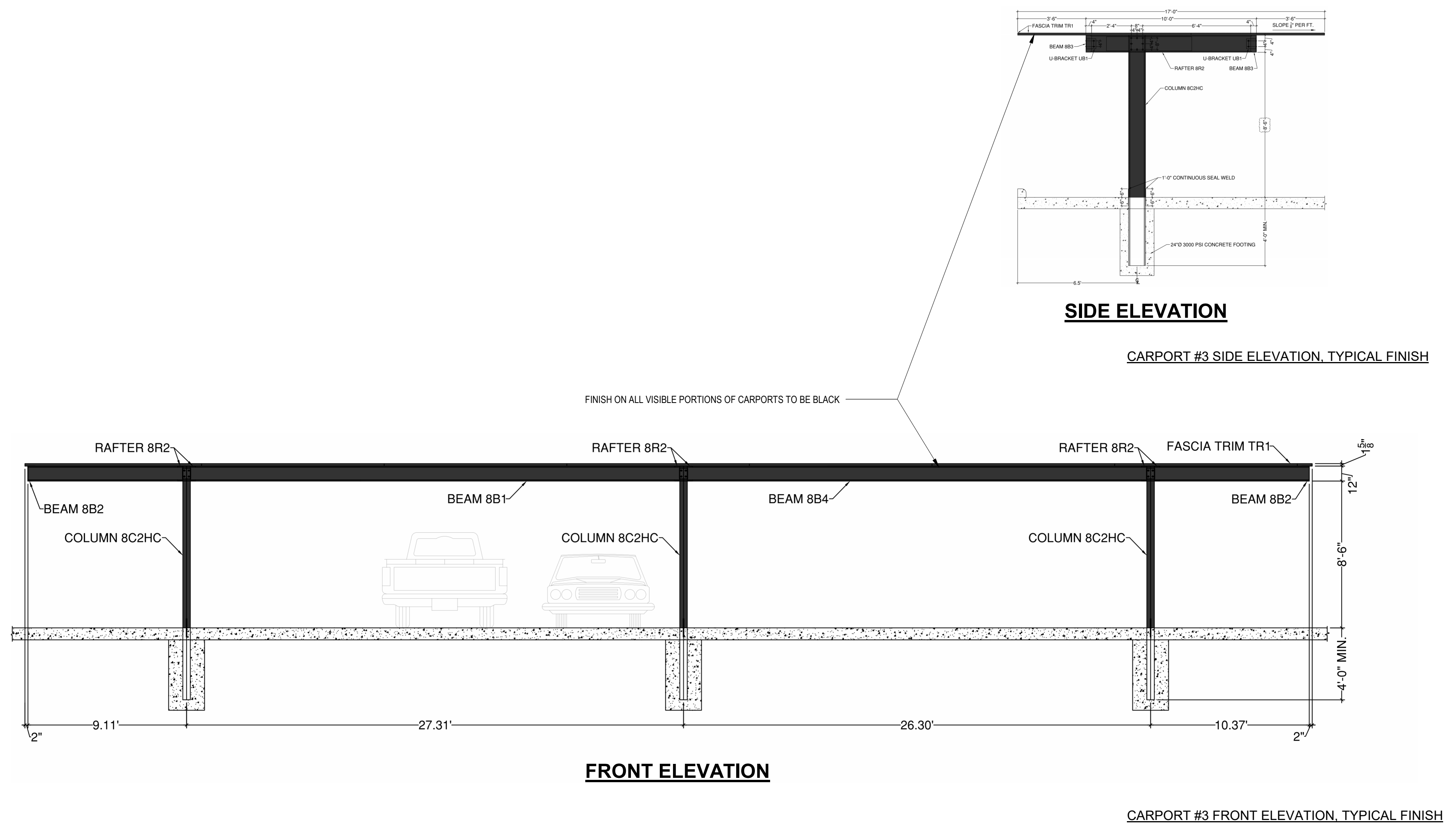


PROJECT
**COMPARK
 VILLAGE
 SOUTH**

TOWN OF PARKER,
 COUNTY
 OF DOUGLAS, COLORADO
 80134

SHEET TITLE
**TYPICAL
 CARPORT
 ELEVATION**

SHEET NUMBER
A1-00



COMPARK VILLAGE SOUTH
F1 AMD 2 - MULTIFAMILY
SITE PLAN

LOT 1, COMPARK VILLAGE FILING NO. 1, AMEND NO. 2
SOUTH HALF SECTION 6, TOWNSHIP 6 SOUTH, RANGE 66 WEST OF THE 6TH PRINCIPAL MERIDIAN
TOWN OF PARKER, COUNTY OF DOUGLAS, STATE OF COLORADO



GENERAL NOTES:

1. ANY PROPOSED LIGHT FIXTURES INSTALLED ON PRIVATE PROPERTY, ADJACENT TO THE PUBLIC RIGHT-OF-WAY, SHALL BE ORIENTED IN SUCH A MANNER OR LIMITED IN LUMEN OUTPUT TO PREVENT GLARE PROBLEMS AND SHALL NOT EXCEED NATIONAL I.E.S. LIGHTING STANDARDS FOR DISABILITY GLARE.

SITE LIGHT FIXTURE SCHEDULE

TYPE	SERVES	DESCRIPTION	MANUFACTURER CATALOG NO.	LAMPS	QUANTITY	NOTES
SA1	SITE	POLE MOUNTED FIXTURE	COOPER #PRV-C15-730-T5-SPB2	52	1	20'
SA2	SITE	POLE MOUNTED FIXTURE	COOPER #PRV-C15-730-T3-SPB2	52	24	20'
SA3	SITE	POLE MOUNTED FIXTURE	COOPER #PRV-C15-730-T3-SPB2 (DOUBLE)	52	4	20'
SA4	SITE	POLE MOUNTED FIXTURE	COOPER #PRV-C60-730-T4-SPB2	217	3	20'
SB	SITE	POLE MOUNTED FIXTURE	COOPER #PRV9-C10-730-T3-SPB2	34.6	41	10'
SC	SITE	BOLLARD	METEOR #SP018-30K-BLK-WD-4S	0.7	10	10'
SF	SITE	WALL MOUNTED	COOPER #ST-SA1F-730-U(T4W OR T4T)-BK-SPB2	66	4	15'
SP	SITE	CARPORT MOUNTED	LEDALUX #CP-8,000-3000K	57	24	-
POLE (SA#, SB)	SITE	POLE	HAPCO (#10 OR 20)-B-4-(D190 OR D218)-BA	-	73	10' AND 20'

REFER TO SITE PLAN SYMBOLS AND LIGHTING TAGS FOR LIGHT FIXTURE MOUNTING AND NUMBER OF FIXTURES PER POLE

CALCULATION SUMMARY

LABEL	UNITS	AVG	MAX	MIN	AVG/MIN	MAX/MIN
LANDSCAPE PATH	FC	1.22	4.0	0.1	12.2	40.0
LANDSCAPE RAMP	FC	1.01	2.5	0.3	3.37	8.33
LANDSCAPE STEPS	FC	0.96	1.8	0.5	1.92	3.60
PARKING	FC	2.03	4.8	0.8	2.54	6.00
PATH 1	FC	2.58	3.9	1.1	2.35	3.55
PATH 2	FC	1.92	3.4	0.8	2.40	4.25
PATH 3	FC	1.99	3.8	0.9	2.21	4.22
PATH 4	FC	1.67	3.3	1.1	1.52	3.00
PATH 5	FC	1.95	3.0	0.9	2.17	3.33
PATH 6	FC	2.21	5.0	0.5	4.42	10.0
PATH 7	FC	2.08	3.7	0.7	2.97	5.29
PROP LINE TRACT 2	FC	0.27	0.9	0.0	N.A.	N.A.
PROP LINE TRACT G	FC	0.06	0.9	0.0	N.A.	N.A.
POOL DECK	FC	4.7	7.8	1.6	N.A.	N.A.

1 SITE PHOTOMETRIC PLAN
SCALE: 1" = 70'-0"

PROJECT NUMBER
65120950

DRAWN BY
TV

DATE
11/21/2024

REVISIONS
1 RFI 21
2 CAR PORTS
3 PHOTOMETRICS



PREPARED FOR CENTURY COMMUNITIES



PROJECT
COMPARK VILLAGE SOUTH

TOWN OF PARKER, COUNTY OF DOUGLAS, COLORADO 80134

SHEET TITLE
SITE PHOTOMETRIC PLAN & SCHEDULES

SHEET NUMBER
51

ADVANCED HIGH CEILING SP-018/SP-018s - Smart Illuminating Bollard Motion Sensor / No Wiring METEOR

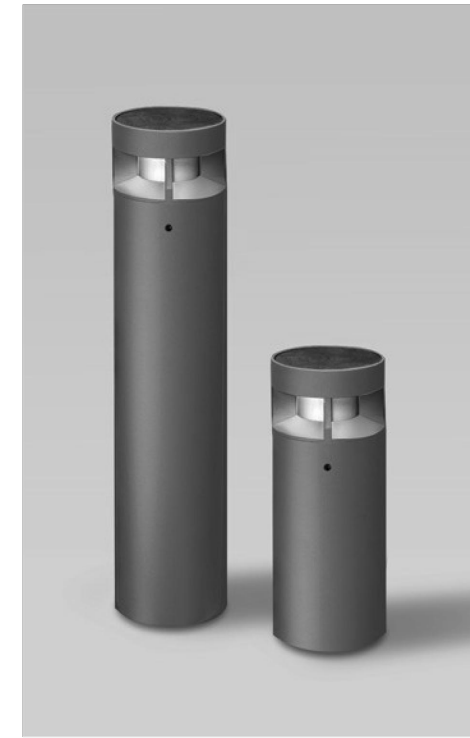


Table with columns: Quantity, Project, Note, Type.

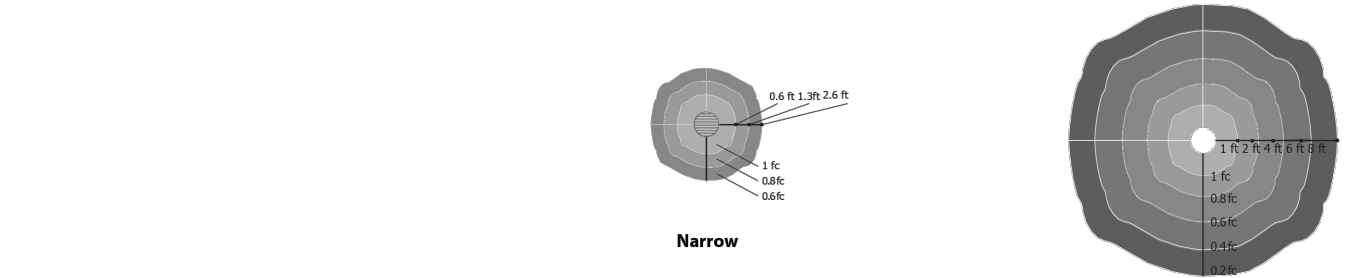
General Housing: Extruded aluminum, Finish: Black, Grey, Platinum silver, Mounting: Embedded, Surface mounted (please refer to installation guide), Anchorage: Anchor base with stainless steel anti-theft screws

Operational Average Sunlight Exposure: 2-3 Hours (sunny) to 5-8 hours (overcast or rainy) to Maintain Function*, Minimum 12 hours (extra stored power will carry over to next day) 5 days*

Solar LED Specification Solar Panel: Crystalline silicon, Lifespan of Solar Panel: 20 yrs, LED Brand: Nichia, Available LED Colors: White(5700K), Neutral White(4000K), Warm White(3000K), Amber, LED Rated Life: > 60,000 Hours (L70), Power Storage: Panasonic industrial battery pack(Lifespan: 4-6 years)

Warranty 3 year limited warranty. See www.meteor-lighting.com for details.

Distribution



METEOR LIGHTING P: 213.255.2060 F: 213.596.3704 www.meteor-lighting.com Page 1 *METEOR LIGHTING reserves the right to make changes to this product at any time without prior notice and such modification shall be effective immediately.

SITE LIGHT FIXTURE 'SC'

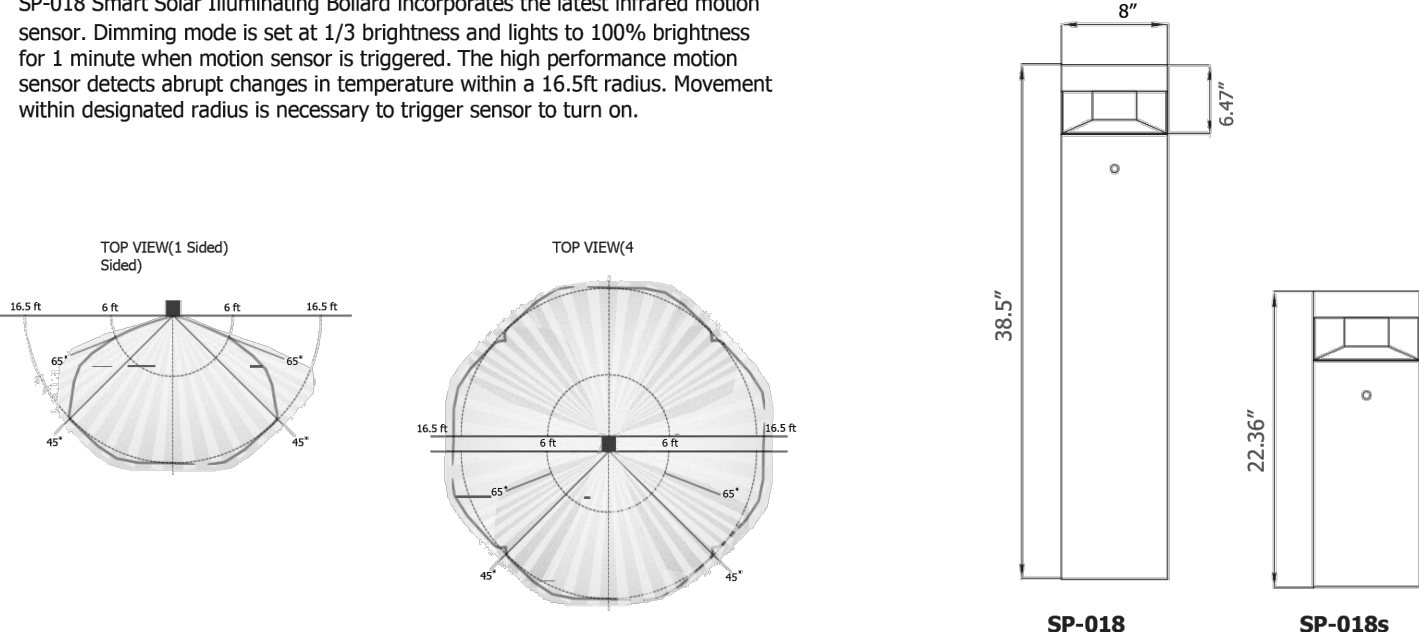
ADVANCED HIGH CEILING SP-018/SP-018s - Smart Illuminating Bollard Motion Sensor / No Wiring METEOR

How To Specify Ordering Example: SP018-30K-BLK-NR-AKE-1S

Table with columns: Model, CCT, Finish, Distribution, Anchorage, Optional. Rows for SP018 and SP018s models.

Motion Sensor Detection type SP-018 Smart Solar Illuminating Bollard incorporates the latest infrared motion sensor. Dimming mode is set at 1/3 brightness and lights to 100% brightness for 1 minute when motion sensor is triggered.

Dimensions



METEOR LIGHTING P: 213.255.2060 F: 213.596.3704 www.meteor-lighting.com Page 2 *METEOR LIGHTING reserves the right to make changes to this product at any time without prior notice and such modification shall be effective immediately.

COMPARK VILLAGE SOUTH F1 AMD 2 - MULTIFAMILY SITE PLAN

LOT 1, COMPARK VILLAGE FILING NO. 1, AMEND NO. 2 SOUTH HALF SECTION 6, TOWNSHIP 6 SOUTH, RANGE 66 WEST OF THE 6TH PRINCIPAL MERIDIAN TOWN OF PARKER, COUNTY OF DOUGLAS, STATE OF COLORADO

SITE LIGHT FIXTURE SCHEDULE

Table with columns: TYPE, SERVES, DESCRIPTION, MANUFACTURER CATALOG NO., LAMPS, QUANTITY, NOTES. Lists fixtures SA1 through SP.

REFER TO SITE PLAN SYMBOLS AND LIGHTING TAGS FOR LIGHT FIXTURE MOUNTING AND NUMBER OF FIXTURES PER POLE

SSS Square Straight Steel Pole No Arm - 4-Bolt Base

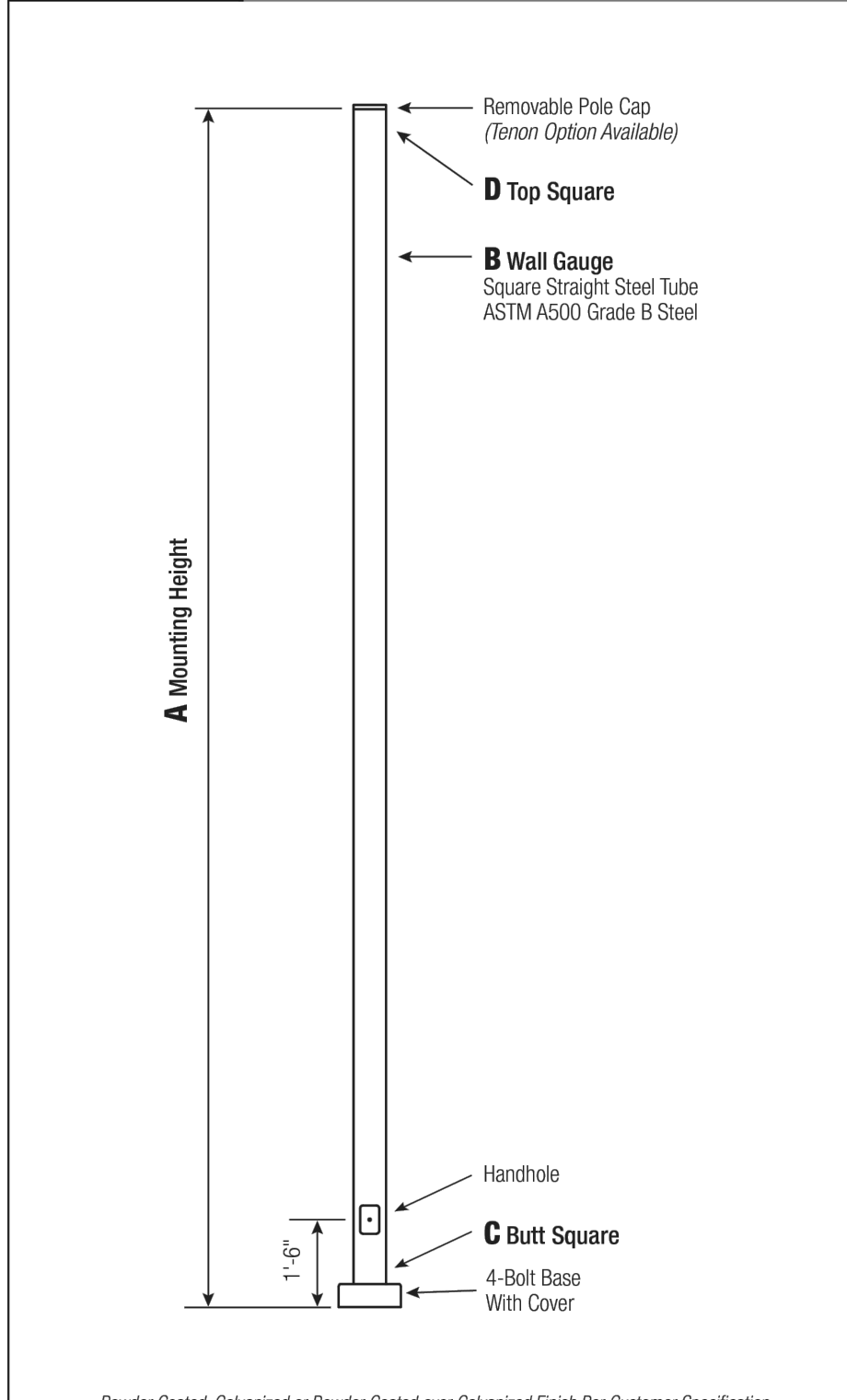


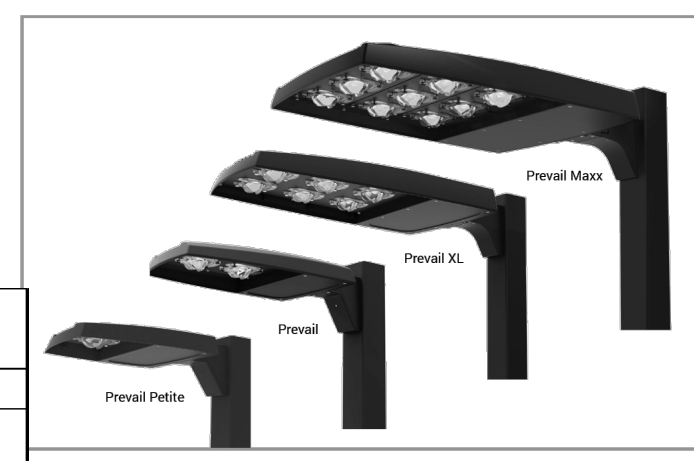
Table with columns: C, D, F, G, H, I. Dimensions for different pole sizes and finishes.

2 HAPCO www.hapco.com

Technical specifications for Pole, Base Style, Anchorage, Handhole, Base Cover, and Vibration Damper.

WARNING: Do not install light pole without luminaires.

Table with columns: Project, Catalog #, Type, Prepared by, Notes, Date.



Lumark

Prevail LED

Area / Site Luminaire

Product Features

Product Certifications



Connected Systems

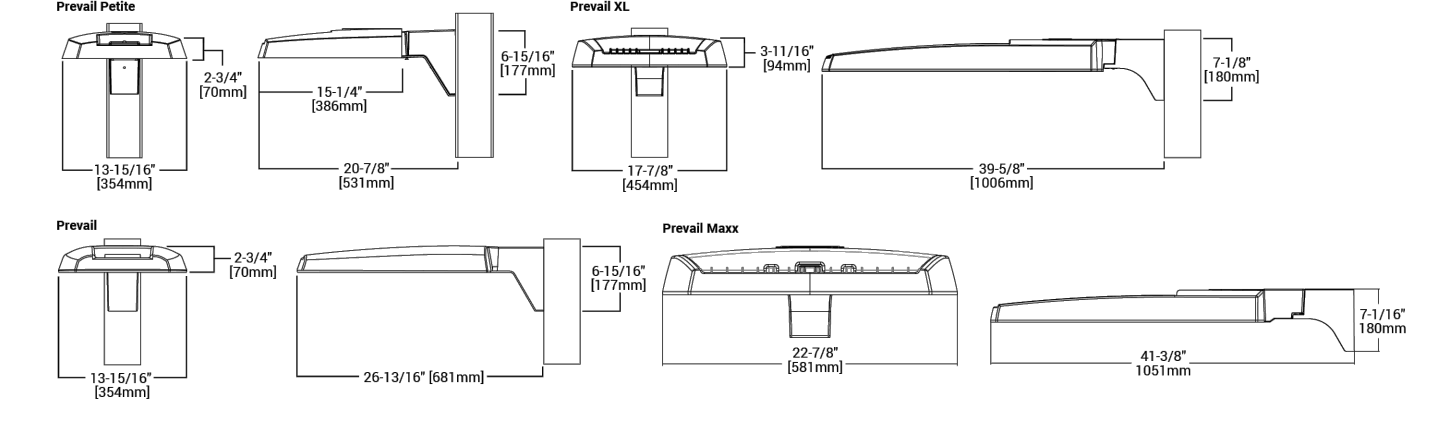
Interactive Menu

- Ordering Information page 2, Mounting Details page 3, 4, Optical Configurations page 5, Product Specifications page 6, Energy and Performance Data page 6, 7, Control Options page 8

Quick Facts

- Lumen packages range from 4,800 - 84,000 lumens (35W - 58W), Replaces 70W up to 1,000W HID equivalents, Efficacies up to 160 lumens per watt, Energy and maintenance savings up to 85% versus HID solutions, Standard universal quick mount arm with universal drill pattern

Dimensional Details



NOTE: 1. Verify fixture dimensions to confirm specification. Not of product variations are UL qualified. 2. Not certified for 200K CRI and warmer only.

COOPER Lighting Solutions

SITE LIGHT FIXTURE 'SA1, SA2, SA3, SA4, & SB'

Ordering Information section for Lumark and Prevail LED fixtures.

Table with columns: Product Family, Light Engine, Color Temperature, Driver, Voltage, Distribution, Mounting, Color. Lists various luminaire models.

Accessories section for Lumark and Prevail LED fixtures, including mounting kits and sensors.

Lumensafe Integrated Network Security Camera Technology Options section.

Table with columns: Product Family, Camera Type, Data Backhaul. Lists camera models and their features.

Stock Ordering Information

Table with columns: Product Family, Light Engine, Voltage, Distribution. Lists luminaire models.

COOPER Lighting Solutions

PROJECT NUMBER 65120950

DRAWN BY TV

DATE 11/21/2024

- REVISIONS 1 RFI 21, 2 CAR PORTS, 3 PHOTOMETRICS



Engineering | Architecture | Design-Build | Surveying | Planning | Geospatial Solutions 6970 GREENWOOD PLAZA BLVD, GREENWOOD VILLAGE, CO. 80111 303-755-0741 www.merrick.com

PREPARED FOR CENTURY COMMUNITIES



PROJECT COMPARK VILLAGE SOUTH

COMPARK VILLAGE SOUTH

TOWN OF PARKER, COUNTY OF DOUGLAS, COLORADO 80134

SHEET TITLE LIGHT FIXTURE SPEC SHEETS

SHEET NUMBER 52

LEDALUX CP-LKFS Lumen and Kelvin Field Selectable Canopy

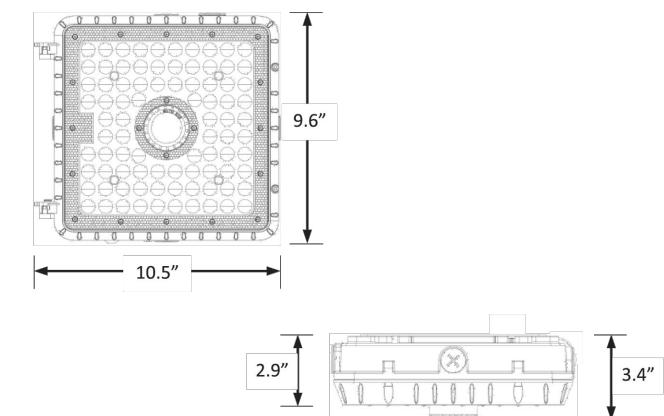
CATALOG NUMBER: L70 44,000 Hours

NOTES:

FIXTURE TYPE:

PROJECT:

DIMENSIONS



Weight: 5 lbs.

WARRANTY

- dLUX listed for wet locations in ambient temperatures from -40°C to 40°C (40°F to 104°F).
- IP65 rated for ingress protection.
- Lens is IK08 rated for impact.
- DLC premium approved for Fuel Pump and Parking Garage categories.
- Complies with FCC Part 15, class B.
- Complies with IEC/EN61000-4-5, input transient surge immunity protection (4kV).
- 5-year warranty on all electronics and housing.

ORDERING INFORMATION

EXAMPLE: CP-10L-LKFS-ODS-WHT

Series	Nominal Lumen Output (Selectable)	Kelvin Selectable	Occupancy Sensor	Housing Color	Accessories (Order Separately)
CP	10L = 10,000/8,000/7,000	LKFS = 3000K/4000K/5000K	ODS ^{1,2} = Microwave occupancy, dimming, & daylight sensor (factory installed) Blank = No sensor	BRZ = Bronze WHT = White	MWAVEDHS-REM = Sensor remote control

¹Remote control Required for programming (sold separately).
²Default sensor settings: detection area = 100%, hold time = 20 minutes, stand-by period = 0 seconds, stand-by dimming level = 10%, daylight threshold = disabled
³Maximum mounting height = 49 feet.

LEDALUX - a division of Mule Lighting, Inc. • 46 Baker Street Providence, RI 02905 • 800 556-7690 P 401 941-2929 F • www.LEDALUX.com

SITE LIGHT FIXTURE 'SP'

LEDALUX CP-LKFS Lumen and Kelvin Field Selectable Canopy

L70 44,000 Hours

Series	Measurements	Low Lumens			Mid Lumens			High Lumens		
		3000K	4000K	5000K	3000K	4000K	5000K	3000K	4000K	5000K
CP-10L-LKFS	Lumens	6821	6962	7228	7800	8248	8312	9297	10,506	9967
	Watts	48	43	47	57	51	57	73	69	73
	Efficacy	143	163	152	137	161	147	127	152	136
	Input Current (A)	120V = 0.40A 240V = 0.20A	120V = 0.36A 240V = 0.18A	120V = 0.39A 240V = 0.20A	120V = 0.48A 240V = 0.24A	120V = 0.43A 240V = 0.21A	120V = 0.48A 240V = 0.24A	120V = 0.61A 240V = 0.30A	120V = 0.58A 240V = 0.28A	120V = 0.61A 240V = 0.30A
		277V = 0.17A	277V = 0.16A	277V = 0.17A	277V = 0.21A	277V = 0.18A	277V = 0.21A	277V = 0.26A	277V = 0.25A	277V = 0.26A

PHOTOMETRIC DATA

CP-10L-LKFS Luminaire Data

Description	Canopy 10L5K - LKFS
Total Lumens	9,993
Input Wattage	73
Efficacy (lm/W)	137
Spacing Criterion (0-180°)	1.14
Spacing Criterion (90-270°)	1.04

Zonal Lumens Summary

Zone	Lumens	%Flt
0-20°	1,245	12.5%
0-30°	2,530	25.3%
0-40°	3,946	39.5%
20-50°	4,143	41.5%
40-70°	4,839	48.4%
0-60°	6,942	69.5%
0-80°	9,872	98.8%
0-90°	9,993	100.0%
90-180°	0	0.0%
0-180°	9,993	100.0%

COMPARK VILLAGE SOUTH F1 AMD 2 - MULTIFAMILY SITE PLAN

LOT 1, COMPARK VILLAGE FILING NO. 1, AMEND NO. 2
 SOUTH HALF SECTION 6, TOWNSHIP 6 SOUTH, RANGE 66 WEST OF THE 6TH PRINCIPAL MERIDIAN
 TOWN OF PARKER, COUNTY OF DOUGLAS, STATE OF COLORADO

McGraw-Edison Impact Elite LED

Ordering Information
 SAMPLE NUMBER: ISO-SA1F-740-U-T3-BZ

Product Family	Light Engine Configuration	Drive Current	Color Temperature	Voltage	Distribution	Finish
ISB-Impact Elite LED Small Cylinder	SA1-F Square	A-130mA B-400mA C-430mA E-100mA F-120mA	722-700K, 2200K 722-700K, 2700K 728-700K, 3000K 728-700K, 3500K 728-700K, 4000K 830-800K, 3500K AMB-Ambient, 5000mA	0-120/277V E1 120V 2-208V 4-277V 0-480V 0-247V	T2-Type II T3-Type III T4-Type IV Forward Throw T4W-Type IV Wide SL2-Type II w/Spot Control SL3-Type III w/Spot Control SL4-Type IV w/Spot Control SL5-H* Spot Light Eliminator Left SL6-H* Spot Light Eliminator Right RW-Rectangular Wide Type I	AP-Grey BC-Black BP-Dark Platinum DM-Diaphane Metallic WH-White

Options (Add as Suffix)

Controls and Systems Options (Add as Suffix)

Accessories (Order Separately)

Project	Catalog #	Type

Prepared by	Notes	Date



McGraw-Edison Impact Elite LED

Wall Mount Luminaire

- Interactive Menu**
- Ordering Information page 2
 - Product Specifications page 2
 - Energy and Performance Data page 3
 - Control Options page 4

Product Certifications

- Quick Facts**
- 10 Optical Distributions
 - Lumen packages range from 2,459 to 8,123 (20W - 66W)
 - Efficacy up to 143 lumens per watt

- Connected Systems**
- WaveLinx
 - Enlighted

Thruway Back Box

Product Specifications

Construction

- Heavy wall, die-cast aluminum housing and removable hinged door frame
- Optional tamper-resistant fasteners offer vandal resistant access

Optics

- High-efficiency injection-molded AccuLED optics technology
- 10 optical distributions
- IGA Certified (3000K CCT and warmer only)

Electrical

- Standard with 0-10V dimming
- Standard with Cooper Lighting Solutions proprietary circuit module designed to withstand 10kV of transient line surge

Finish

- Super durable TGIC polyester powder coat paint, 2.5 mil nominal thickness
- RAL and custom color matches available
- Coastal Construction (CC) option available

Warranty

- Five year limited warranty, consult website for details. www.cooperlighting.com/legal

COOPER Lighting Solutions

FS500046EN page 2 April 12, 2021 1:28 PM

Dimensional Details

SITE LIGHT FIXTURE 'SF'

SITE LIGHT FIXTURE SCHEDULE

TYPE	SERVES	DESCRIPTION	MANUFACTURER CATALOG NO.	LAMPS	QUANTITY	NOTES
SA1	SITE	POLE MOUNTED FIXTURE	COOPER #PRV-C15-730-T5-SPB2	52	1	20'
SA2	SITE	POLE MOUNTED FIXTURE	COOPER #PRV-C15-730-T3-SPB2	52	24	20'
SA3	SITE	POLE MOUNTED FIXTURE	COOPER #PRV-C15-730-T3-SPB2 (DOUBLE)	52	4	20'
SA4	SITE	POLE MOUNTED FIXTURE	COOPER #PRV-C80-730-T4-SPB2	217	3	20'
SB	SITE	POLE MOUNTED FIXTURE	COOPER #PRV-C10-730-T3-SPB2	34.6	44	10'
SC	SITE	BOLLARD	METEOR #SP018-30K-BLK-WD-4S	0.7	10	10'
SF	SITE	WALL MOUNTED	COOPER #ST-SA1F-730-U-(T4W OR T4FT)-BK-SPB2	66	4	15'
SP	SITE	CARPORT MOUNTED	LEDALUX #CP-8,000-3000K	57	25	-
POLE (SA# SB)	SITE	POLE	HAPCO # (10 OR 20)-B-4-(D190 OR D218)-BA	-	76	10' AND 20'

REFER TO SITE PLAN SYMBOLS AND LIGHTING TAGS FOR LIGHT FIXTURE MOUNTING AND NUMBER OF FIXTURES PER POLE

PROJECT NUMBER
65120950

DRAWN BY
TV

DATE
11/21/2024

REVISIONS

1	RFI 21
2	CAR PORTS
3	PHOTOMETRICS

MERRICK

Engineering / Architecture / Design-Build / Surveying / Planning / Geospatial Solutions

5970 GREENWOOD PLAZA BLVD.
GREENWOOD VILLAGE, CO. 80111
303-751-0741
www.merrick.com

PREPARED FOR CENTURY COMMUNITIES

CENTURY LIVING

PROJECT

COMPARK VILLAGE SOUTH

TOWN OF PARKER, COUNTY OF DOUGLAS, COLORADO 80134

SHEET TITLE
LIGHT FIXTURE SPEC SHEETS

SHEET NUMBER
53