

COMPARK VILLAGE SOUTH
F1 AMD 2 - MULTIFAMILY
SITE PLAN

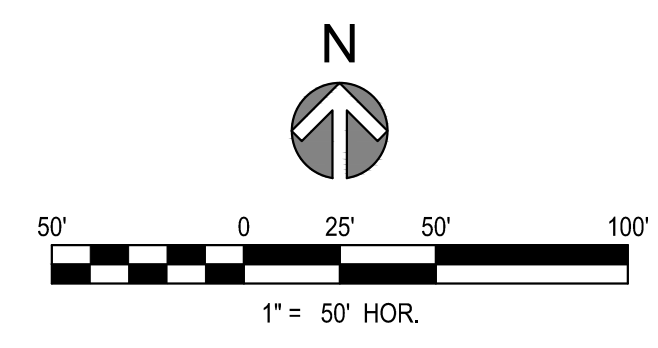
LOT 1, COMPARK VILLAGE FILING NO. 1, AMEND NO. 2
SOUTH HALF SECTION 6, TOWNSHIP 6 SOUTH, RANGE 66 WEST OF THE 6TH PRINCIPAL MERIDIAN
TOWN OF PARKER, COUNTY OF DOUGLAS, STATE OF COLORADO

PROJECT NUMBER
65120950

DRAWN BY
TV

DATE
05/21/2025

REVISIONS
1 RFI 21
2 CAR PORTS
3 EV CHARGERS



LEGEND / KEYNOTES

- PARKING SPACE COUNT
- PROPERTY LINE
- SIGN
- R1-1 (30' x 30')
- R7-8 (12' x 18')
- R7-8 P (12' x 9')
- R7-1 (SP) (12' x 18')
- R2-1 (SP) (12' x 18')
- EV CHARGER
- PAVEMENT MARKING OF INTERNATIONAL SYMBOL OF ACCESSIBILITY
- CAR PORT
- EV CHARGER

NOTES
1. DIMENSIONS ARE TO FLOWLINE UNLESS OTHERWISE NOTED.

MATCH LINE SEE SHEET 4



PREPARED FOR CENTURY COMMUNITIES



PROJECT
COMPARK VILLAGE SOUTH

TOWN OF PARKER, COUNTY OF DOUGLAS, COLORADO 80134

SHEET TITLE
SITE PLAN

SHEET NUMBER
3

COMPARK VILLAGE SOUTH
F1 AMD 2 - MULTIFAMILY
SITE PLAN

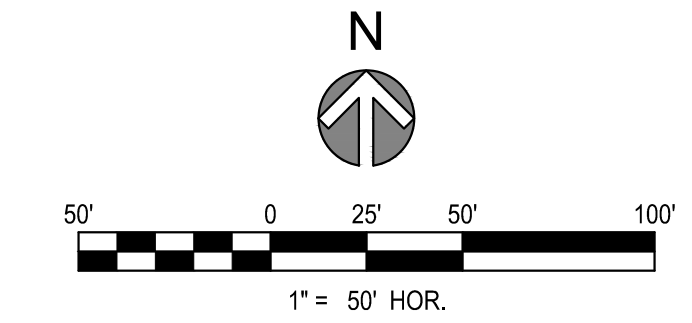
LOT 1, COMPARK VILLAGE FILING NO. 1, AMEND NO. 2
SOUTH HALF SECTION 6, TOWNSHIP 6 SOUTH, RANGE 66 WEST OF THE 6TH PRINCIPAL MERIDIAN
TOWN OF PARKER, COUNTY OF DOUGLAS, STATE OF COLORADO

PROJECT NUMBER
65120950

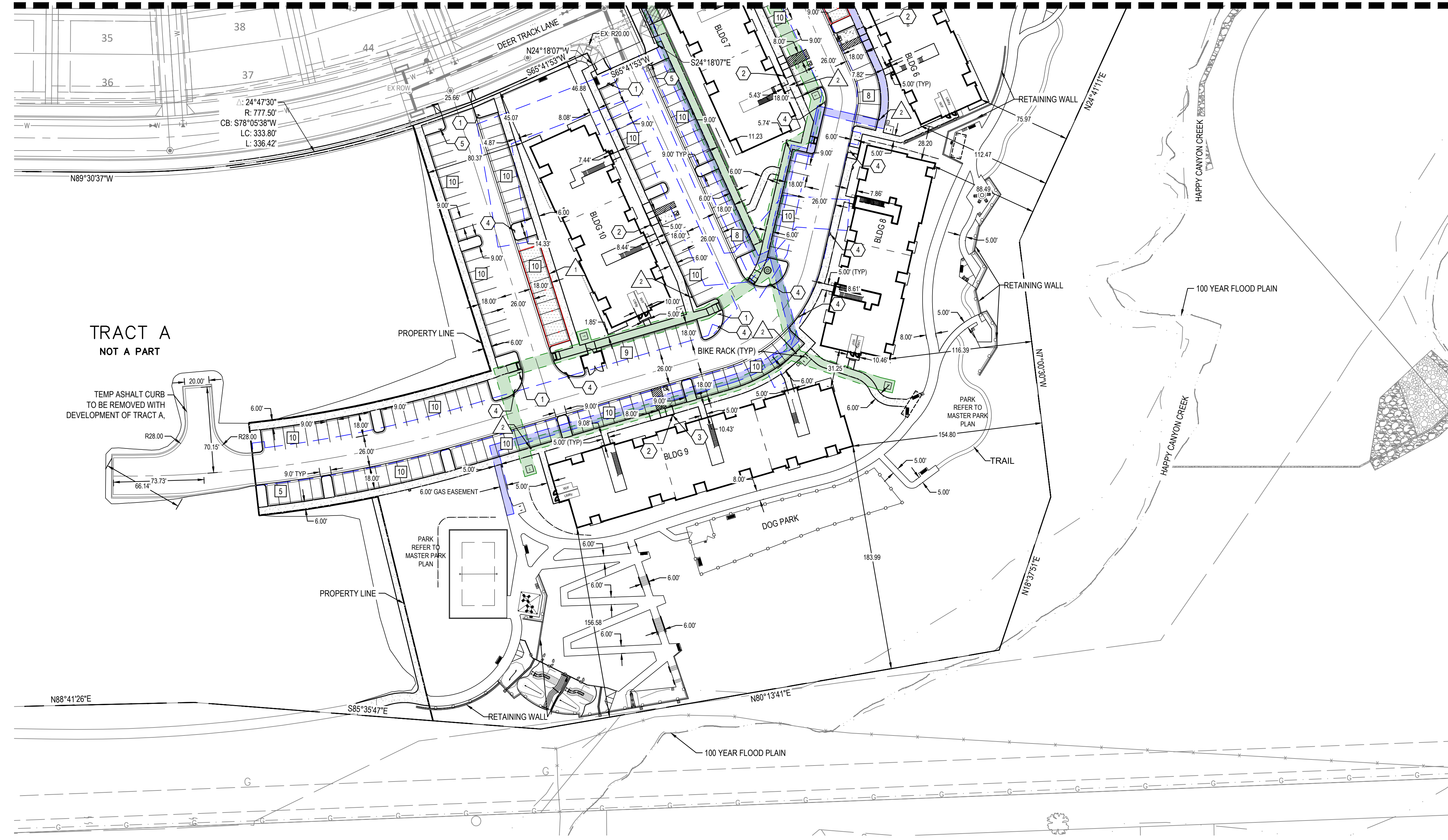
DRAWN BY
TV

DATE
05/21/2025

REVISIONS
1 RFI 21
2 CAR PORTS
3 EV CHARGERS



MATCH LINE SEE SHEET 3



LEGEND / KEYNOTES

- PARKING SPACE COUNT
- PROPERTY LINE
- SIGN
- R1-1 (30' x 30')
- R7-8 (12' x 18')
- R7-8 P (12' x 9')
- R7-1 (SP) (12' x 18')
- R2-1 (SP) (12' x 18')
- EV CHARGER
- PAVEMENT MARKING OF INTERNATIONAL SYMBOL OF ACCESSIBILITY
- CAR PORT
- EV CHARGER

NOTES
1. DIMENSIONS ARE TO FLOWLINE UNLESS OTHERWISE NOTED.



PREPARED FOR CENTURY COMMUNITIES



PROJECT
COMPARK VILLAGE SOUTH

TOWN OF PARKER, COUNTY OF DOUGLAS, COLORADO 80134

SHEET TITLE
SITE PLAN

SHEET NUMBER
4

COMPARK VILLAGE SOUTH
 F1 AMD 2 - MULTIFAMILY
 SITE PLAN
 LOT 2, COMPARK VILLAGE FILING NO. 1, AMEND NO. 2
 SOUTH HALF SECTION 6, TOWNSHIP 6 SOUTH, RANGE 66 WEST OF THE 6TH PRINCIPAL MERIDIAN
 TOWN OF PARKER, COUNTY OF DOUGLAS, STATE OF COLORADO

PROJECT NUMBER
 210512
 DRAWN BY

 DATE
 05/21/2025



Architecture + Planning
 820 16th Street, Suite 500
 Denver, CO 80202
 ktgy.com
 303.825.6400

PREPARED FOR CENTURY
 COMMUNITIES

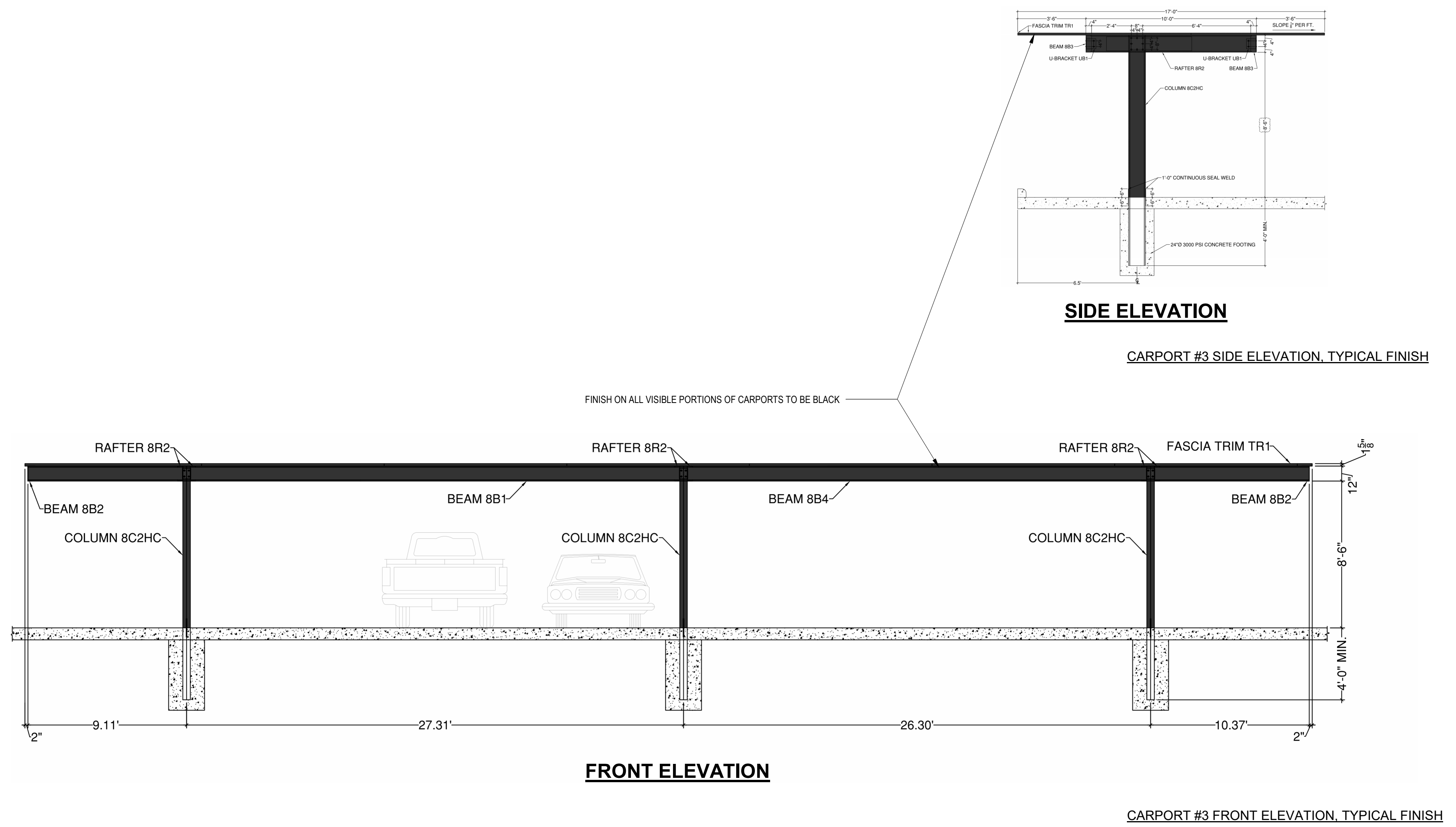


PROJECT
**COMPARK
 VILLAGE
 SOUTH**

TOWN OF PARKER,
 COUNTY
 OF DOUGLAS, COLORADO
 80134

SHEET TITLE
**TYPICAL
 CARPORT
 ELEVATION**

SHEET NUMBER
A1-00



COMPARK VILLAGE SOUTH
F1 AMD 2 - MULTIFAMILY
SITE PLAN

LOT 1, COMPARK VILLAGE FILING NO. 1, AMEND NO. 2
SOUTH HALF SECTION 6, TOWNSHIP 6 SOUTH, RANGE 66 WEST OF THE 6TH PRINCIPAL MERIDIAN
TOWN OF PARKER, COUNTY OF DOUGLAS, STATE OF COLORADO



GENERAL NOTES:

1. ANY PROPOSED LIGHT FIXTURES INSTALLED ON PRIVATE PROPERTY, ADJACENT TO THE PUBLIC RIGHT-OF-WAY, SHALL BE ORIENTED IN SUCH A MANNER OR LIMITED IN LUMEN OUTPUT TO PREVENT GLARE PROBLEMS AND SHALL NOT EXCEED NATIONAL I.E.S. LIGHTING STANDARDS FOR DISABILITY GLARE.

SITE LIGHT FIXTURE SCHEDULE

TYPE	SERVES	DESCRIPTION	MANUFACTURER CATALOG NO.	LAMPS	QUANTITY	NOTES
SA1	SITE	POLE MOUNTED FIXTURE	COOPER #PRV-C15-730-T5-SPB2	52	1	20'
SA2	SITE	POLE MOUNTED FIXTURE	COOPER #PRV-C15-730-T3-SPB2	52	24	20'
SA3	SITE	POLE MOUNTED FIXTURE	COOPER #PRV-C15-730-T3-SPB2 (DOUBLE)	52	4	20'
SA4	SITE	POLE MOUNTED FIXTURE	COOPER #PRV-C60-730-T4-SPB2	217	3	20'
SB	SITE	POLE MOUNTED FIXTURE	COOPER #PRV9-C10-730-T3-SPB2	34.6	41	10'
SC	SITE	BOLLARD	METEOR #SP018-30K-BLK-WD-4S	0.7	10	10'
SF	SITE	WALL MOUNTED	COOPER #ST-SA1F-730-U(T4W OR T4T)-BK-SPB2	66	4	15'
SP	SITE	CARPORT MOUNTED	LEDALUX #CP-8,000-3000K	57	24	-
POLE (SA#, SB)	SITE	POLE	HAPCO (#10 OR 20)-B-4-(D190 OR D218)-BA	-	73	10' AND 20'

REFER TO SITE PLAN SYMBOLS AND LIGHTING TAGS FOR LIGHT FIXTURE MOUNTING AND NUMBER OF FIXTURES PER POLE

CALCULATION SUMMARY

LABEL	UNITS	AVG	MAX	MIN	AVG/MIN	MAX/MIN
LANDSCAPE PATH	FC	1.22	4.0	0.1	12.2	40.0
LANDSCAPE RAMP	FC	1.01	2.5	0.3	3.37	8.33
LANDSCAPE STEPS	FC	0.96	1.8	0.5	1.92	3.60
PARKING	FC	2.03	4.8	0.8	2.54	6.00
PATH 1	FC	2.58	3.9	1.1	2.35	3.55
PATH 2	FC	1.92	3.4	0.8	2.40	4.25
PATH 3	FC	1.99	3.8	0.9	2.21	4.22
PATH 4	FC	1.67	3.3	1.1	1.52	3.00
PATH 5	FC	1.95	3.0	0.9	2.17	3.33
PATH 6	FC	2.21	5.0	0.5	4.42	10.0
PATH 7	FC	2.08	3.7	0.7	2.97	5.29
PROP LINE TRACT 2	FC	0.27	0.9	0.0	N.A.	N.A.
PROP LINE TRACT G	FC	0.06	0.9	0.0	N.A.	N.A.
POOL DECK	FC	4.7	7.8	1.6	N.A.	N.A.

1 SITE PHOTOMETRIC PLAN
SCALE: 1" = 70'-0"

PROJECT NUMBER
65120950

DRAWN BY
TV

DATE
05/21/2025

REVISIONS
1 RFI 21
2 CAR PORTS
3 PHOTOMETRICS



PREPARED FOR CENTURY COMMUNITIES



PROJECT
COMPARK VILLAGE SOUTH

TOWN OF PARKER, COUNTY OF DOUGLAS, COLORADO 80134

SHEET TITLE
SITE PHOTOMETRIC PLAN & SCHEDULES

SHEET NUMBER
51

