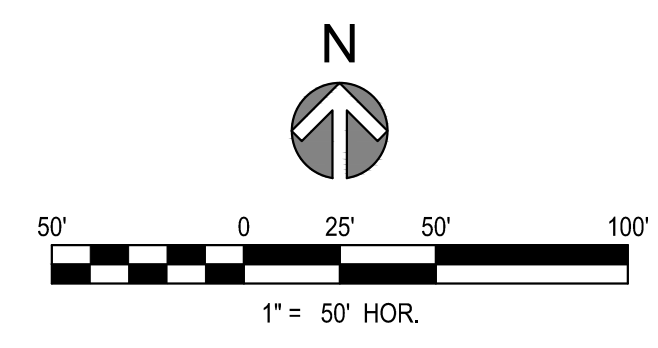


COMPARK VILLAGE SOUTH  
F1 AMD 2 - MULTIFAMILY  
SITE PLAN

LOT 1, COMPARK VILLAGE FILING NO. 1, AMEND NO. 2  
SOUTH HALF SECTION 6, TOWNSHIP 6 SOUTH, RANGE 66 WEST OF THE 6TH PRINCIPAL MERIDIAN  
TOWN OF PARKER, COUNTY OF DOUGLAS, STATE OF COLORADO

PROJECT NUMBER  
65120950  
  
DRAWN BY  
TV  
  
DATE  
6/3/2025

REVISIONS  
1 RFI 21  
2 CAR PORTS  
3 EV CHARGERS



MATCH LINE SEE SHEET 4

LEGEND / KEYNOTES

- PARKING SPACE COUNT
- PROPERTY LINE
- SIGN
- R1-1 (30' x 30')
- R7-8 (12' x 18')
- R7-8 P (12' x 9')
- R7-1 (SP) (12' x 18')
- R2-1 (SP) (12' x 18')
- EV CHARGER
- PAVEMENT MARKING OF INTERNATIONAL SYMBOL OF ACCESSIBILITY
- CAR PORT
- EV CHARGER

NOTES  
1. DIMENSIONS ARE TO FLOWLINE UNLESS OTHERWISE NOTED.



PREPARED FOR CENTURY COMMUNITIES



PROJECT  
**COMPARK VILLAGE SOUTH**

TOWN OF PARKER, COUNTY OF DOUGLAS, COLORADO 80134

SHEET TITLE  
SITE PLAN

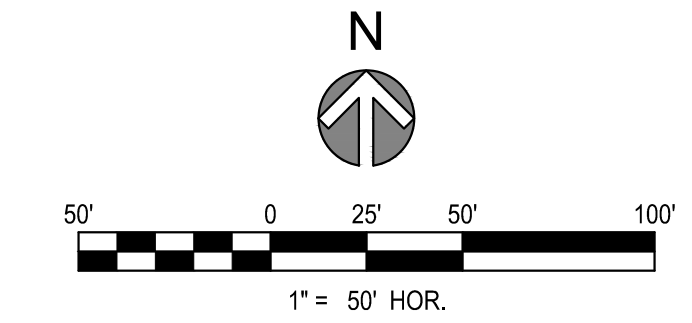
SHEET NUMBER  
3

COMPARK VILLAGE SOUTH  
F1 AMD 2 - MULTIFAMILY  
SITE PLAN

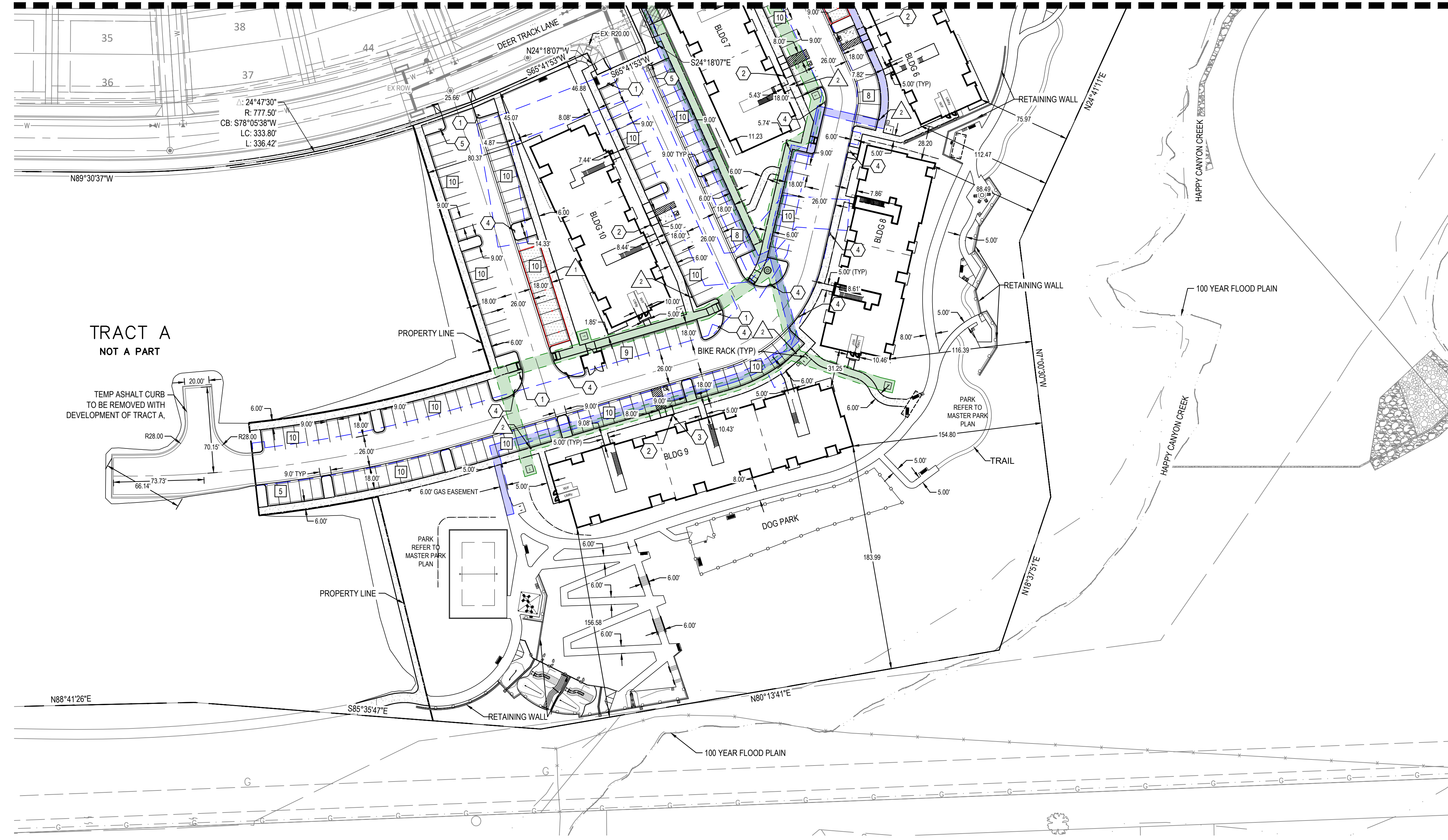
LOT 1, COMPARK VILLAGE FILING NO. 1, AMEND NO. 2  
SOUTH HALF SECTION 6, TOWNSHIP 6 SOUTH, RANGE 66 WEST OF THE 6TH PRINCIPAL MERIDIAN  
TOWN OF PARKER, COUNTY OF DOUGLAS, STATE OF COLORADO

PROJECT NUMBER  
65120950  
  
DRAWN BY  
TV  
  
DATE  
6/3/2025

REVISIONS  
1 RFI 21  
2 CAR PORTS  
3 EV CHARGERS



MATCH LINE SEE SHEET 3



LEGEND / KEYNOTES

- PARKING SPACE COUNT
- PROPERTY LINE
- SIGN
- R1-1 (30' x 30')
- R7-8 (12' x 18')
- R7-8 P (12' x 9')
- R7-1 (SP) (12' x 18')
- R2-1 (SP) (12' x 18')
- EV CHARGER
- PAVEMENT MARKING OF INTERNATIONAL SYMBOL OF ACCESSIBILITY
- CAR PORT
- EV CHARGER

NOTES  
1. DIMENSIONS ARE TO FLOWLINE UNLESS OTHERWISE NOTED.



PREPARED FOR CENTURY COMMUNITIES



PROJECT  
**COMPARK VILLAGE SOUTH**

TOWN OF PARKER, COUNTY OF DOUGLAS, COLORADO 80134

SHEET TITLE  
SITE PLAN

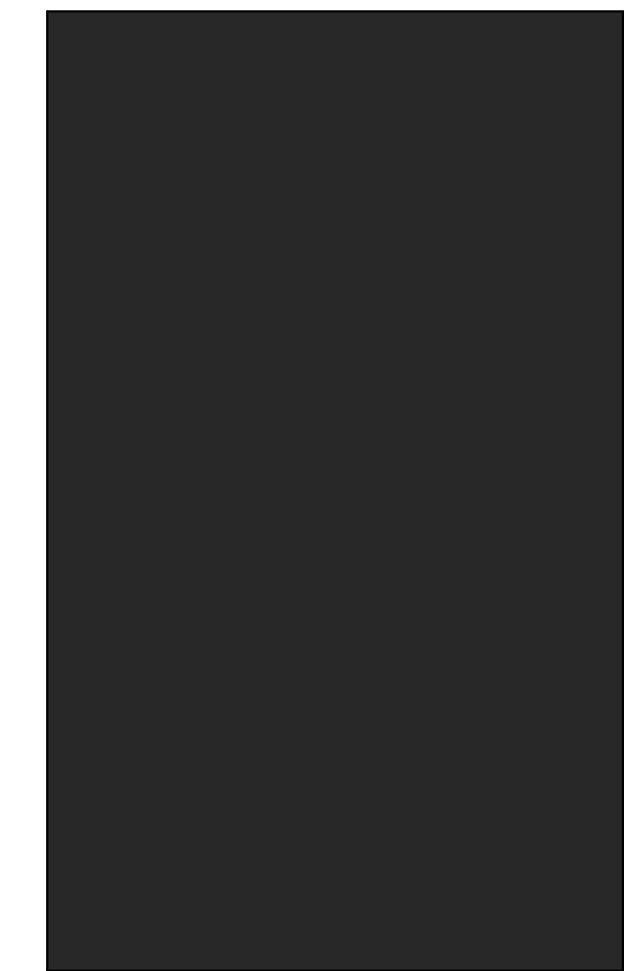
SHEET NUMBER  
4

COMPARK VILLAGE SOUTH  
 F1 AMD 2 - MULTIFAMILY  
 SITE PLAN  
 LOT 2, COMPARK VILLAGE FILING NO. 1, AMEND NO. 2  
 SOUTH HALF SECTION 6, TOWNSHIP 6 SOUTH, RANGE 66 WEST OF THE 6TH PRINCIPAL MERIDIAN  
 TOWN OF PARKER, COUNTY OF DOUGLAS, STATE OF COLORADO

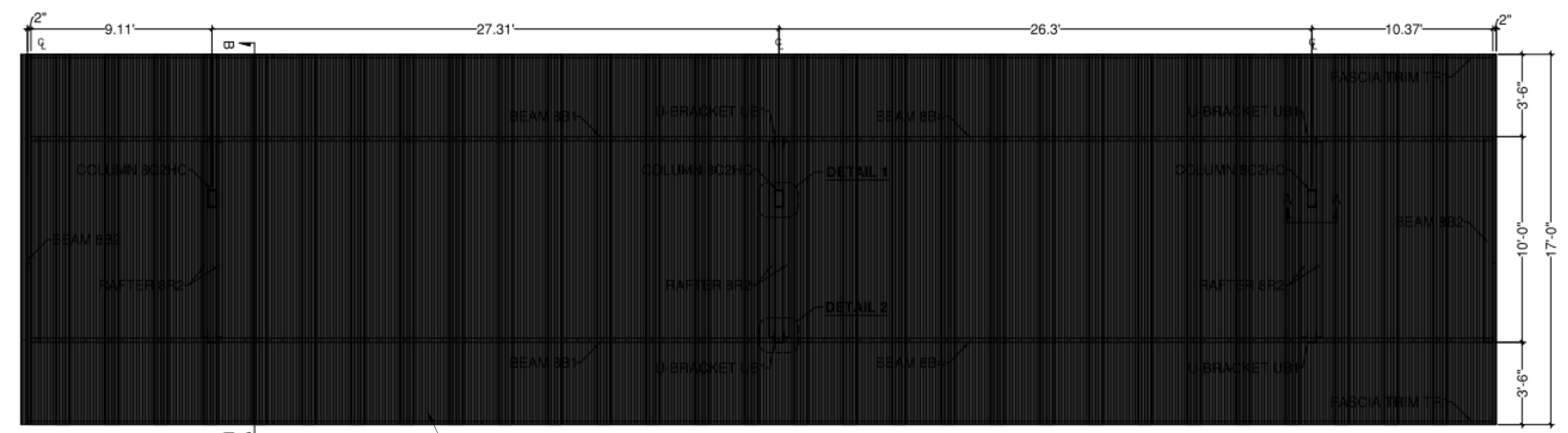
PROJECT NUMBER  
 210512  
 DRAWN BY  
  
 DATE  
 6/3/2025



**Architecture + Planning**  
 820 16th Street, Suite 500  
 Denver, CO 80202  
 ktgy.com  
 303.825.6400



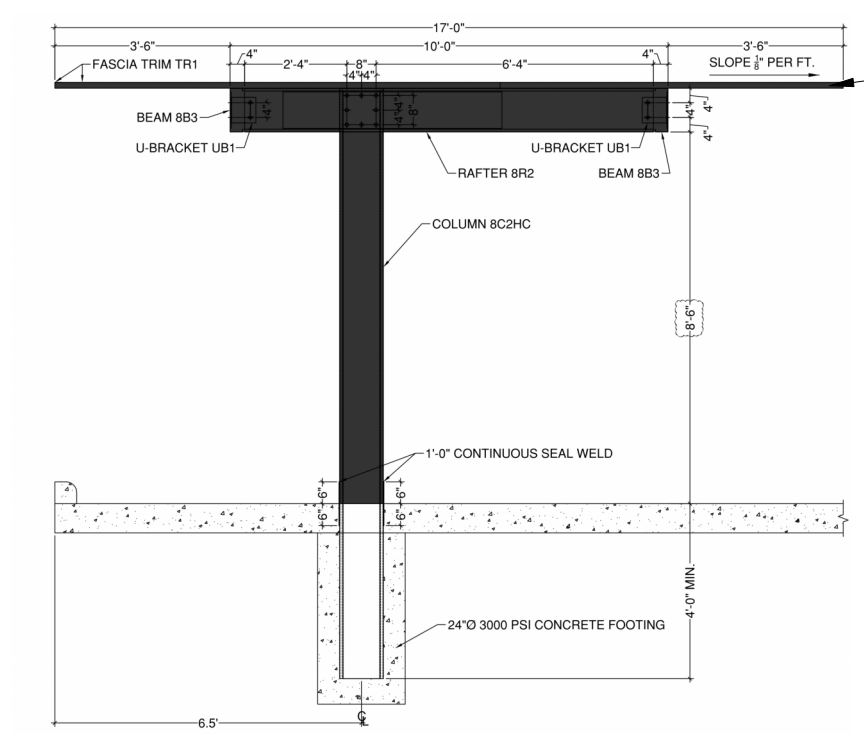
**MATERIALS**  
 CARPORT STRUCTURE AND ROOF PAINTED TO  
 MATCH RAILING PAINT -  
 SHERWIN WILLIAMS TRICORN BLACK



**ROOF PLAN**

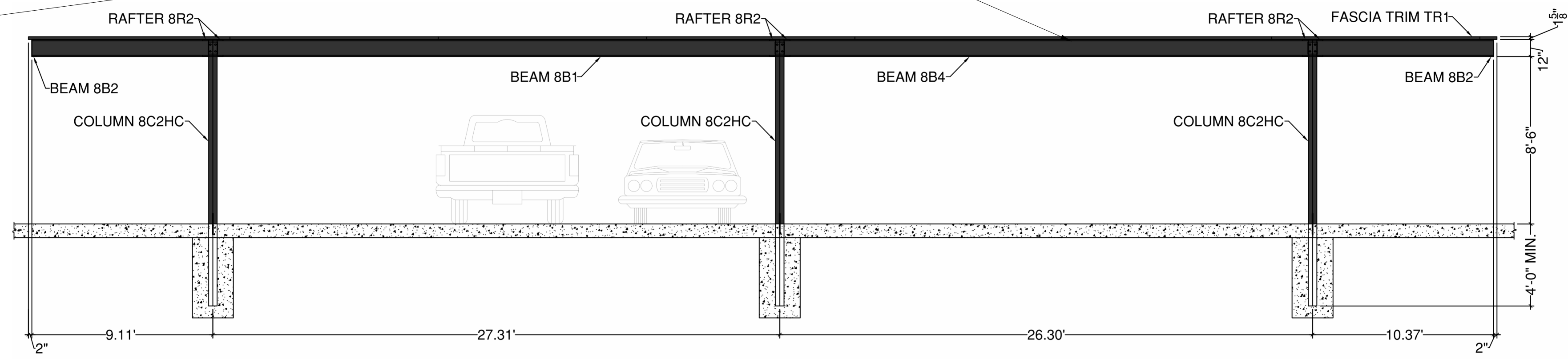
CARPORT #3 ROOF PLAN, TYPICAL FINISH

FINISH ON ALL VISIBLE PORTIONS OF CARPORTS,  
 INCLUDING ROOF TO BE SHERWIN WILLIAMS TRICORN  
 BLACK TO MATCH BALCONY RAILING PAINT



**SIDE ELEVATION**

CARPORT #3 SIDE ELEVATION, TYPICAL FINISH



**FRONT ELEVATION**

CARPORT #3 FRONT ELEVATION, TYPICAL FINISH

PREPARED FOR CENTURY  
 COMMUNITIES



PROJECT  
**COMPARK  
 VILLAGE  
 SOUTH**

TOWN OF PARKER,  
 COUNTY  
 OF DOUGLAS, COLORADO  
 80134

SHEET TITLE  
**TYP CARPORT  
 ELEVATION &  
 PLAN**

SHEET NUMBER  
**A1-00**

COMPARK VILLAGE SOUTH  
F1 AMD 2 - MULTIFAMILY  
SITE PLAN

LOT 1, COMPARK VILLAGE FILING NO. 1, AMEND NO. 2  
SOUTH HALF SECTION 6, TOWNSHIP 6 SOUTH, RANGE 66 WEST OF THE 6TH PRINCIPAL MERIDIAN  
TOWN OF PARKER, COUNTY OF DOUGLAS, STATE OF COLORADO



GENERAL NOTES:

1. ANY PROPOSED LIGHT FIXTURES INSTALLED ON PRIVATE PROPERTY, ADJACENT TO THE PUBLIC RIGHT-OF-WAY, SHALL BE ORIENTED IN SUCH A MANNER OR LIMITED IN LUMEN OUTPUT TO PREVENT GLARE PROBLEMS AND SHALL NOT EXCEED NATIONAL I.E.S. LIGHTING STANDARDS FOR DISABILITY GLARE.

SITE LIGHT FIXTURE SCHEDULE

TYPE	SERVES	DESCRIPTION	MANUFACTURER CATALOG NO.	LAMPS	QUANTITY	NOTES
SA1	SITE	POLE MOUNTED FIXTURE	COOPER #PRV-C15-730-T5-SPB2	52	1	20'
SA2	SITE	POLE MOUNTED FIXTURE	COOPER #PRV-C15-730-T3-SPB2	52	24	20'
SA3	SITE	POLE MOUNTED FIXTURE	COOPER #PRV-C15-730-T3-SPB2 (DOUBLE)	52	4	20'
SA4	SITE	POLE MOUNTED FIXTURE	COOPER #PRV-C60-730-T4-SPB2	217	3	20'
SB	SITE	POLE MOUNTED FIXTURE	COOPER #PRV9-C10-730-T3-SPB2	34.6	41	10'
SC	SITE	BOLLARD	METEOR #SP018-30K-BLK-WD-4S	0.7	10	10'
SF	SITE	WALL MOUNTED	COOPER #ST-SA1F-730-U(T4W OR T4T)-BK-SPB2	66	4	15'
SP	SITE	CARPORT MOUNTED	LEDALUX #CP-8,000-3000K	57	24	-
POLE (SA#, SB)	SITE	POLE	HAPCO (#10 OR 20)-B-4-(D190 OR D218)-BA	-	73	10' AND 20'

REFER TO SITE PLAN SYMBOLS AND LIGHTING TAGS FOR LIGHT FIXTURE MOUNTING AND NUMBER OF FIXTURES PER POLE

CALCULATION SUMMARY

LABEL	UNITS	AVG	MAX	MIN	AVG/MIN	MAX/MIN
LANDSCAPE PATH	FC	1.22	4.0	0.1	12.2	40.0
LANDSCAPE RAMP	FC	1.01	2.5	0.3	3.37	8.33
LANDSCAPE STEPS	FC	0.96	1.8	0.5	1.92	3.60
PARKING	FC	2.03	4.8	0.8	2.54	6.00
PATH 1	FC	2.58	3.9	1.1	2.35	3.55
PATH 2	FC	1.92	3.4	0.8	2.40	4.25
PATH 3	FC	1.99	3.8	0.9	2.21	4.22
PATH 4	FC	1.67	3.3	1.1	1.52	3.00
PATH 5	FC	1.95	3.0	0.9	2.17	3.33
PATH 6	FC	2.21	5.0	0.5	4.42	10.0
PATH 7	FC	2.08	3.7	0.7	2.97	5.29
PROP LINE TRACT 2	FC	0.27	0.9	0.0	N.A.	N.A.
PROP LINE TRACT G	FC	0.06	0.9	0.0	N.A.	N.A.
POOL DECK	FC	4.7	7.8	1.6	N.A.	N.A.

1 SITE PHOTOMETRIC PLAN  
SCALE: 1" = 70'-0"

PROJECT NUMBER  
65120950  
  
DRAWN BY  
TV  
  
DATE  
6/3/2025

- REVISIONS
- 1 RFI 21
  - 2 CAR PORTS
  - 3 PHOTOMETRICS



PREPARED FOR CENTURY COMMUNITIES



PROJECT  
**COMPARK VILLAGE SOUTH**

TOWN OF PARKER, COUNTY OF DOUGLAS, COLORADO 80134

SHEET TITLE  
SITE PHOTOMETRIC PLAN & SCHEDULES

SHEET NUMBER  
51

Specification

ADVANCED HIGH CEILING  
**SP-018/SP-018s** - Smart Illuminating Bollard  
Motion Sensor / No Wiring



Quantity
Project
Note
Type

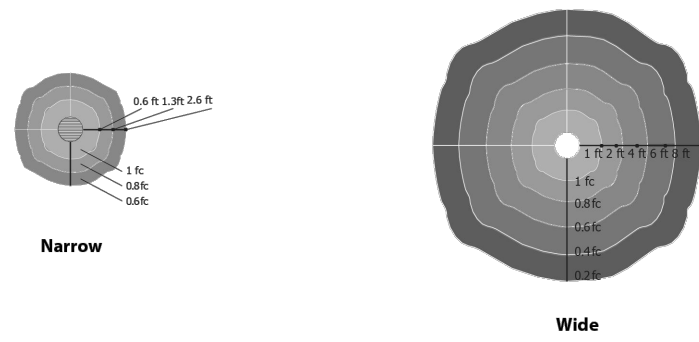
**General**  
Housing: Extruded aluminum  
Finish: Black, Grey, Platinum silver  
Mounting: Embedded, Surface mounted (please refer to installation guide)  
Anchorage: Anchor base with stainless steel anti-theft screws

**Operational**  
Average Sunlight Exposure: 2-3 Hours (sunny) to 5-8 hours (overcast or rainy) to Maintain Function\*  
Average Operation Time: Minimum 12 hours (extra stored power will carry over to next day)  
Solar Deprivation Limit: 5 days\*  
Switch: Auto photo sensor  
On/Off Level: 1.5 / 3 footcandle  
Temperature Range: -40° F to 176° F  
Distribution: Narrow or Wide  
Weight: 44.1 lbs (SP-018) / 33.1 lbs (SP-018s)  
\*10 maintain function, unit requires 2-4 hour (sunny) to 5-8 hour (overcast/rainy) of full exposure. Extra charge will be restored for next day use. Fully charged, the unit can last 3-4 rainy days.

**Solar LED Specification**  
Solar Panel: Crystalline silicon  
Lifespan of Solar Panel: 20 yrs  
LED Brand: Nichia  
Available LED colors: White(5700K), Neutral White(4000K), Warm White(3000K), Amber  
LED Rated Life: > 60,000 Hours (L70)  
Power Storage: Panasonic industrial battery pack (Lifespan: 4-6 years)

**Warranty**  
3 year limited warranty. See [www.meteor-lighting.com](http://www.meteor-lighting.com) for details.

**Distribution**



METEOR LIGHTING P: 213.255.2060 F: 213.596.3704 [www.meteor-lighting.com](http://www.meteor-lighting.com) Page 1  
\*METEOR LIGHTING reserves the right to make changes to this product at any time without prior notice and such modification shall be effective immediately.

## SITE LIGHT FIXTURE 'SC'

Specification

ADVANCED HIGH CEILING  
**SP-018/SP-018s** - Smart Illuminating Bollard  
Motion Sensor / No Wiring

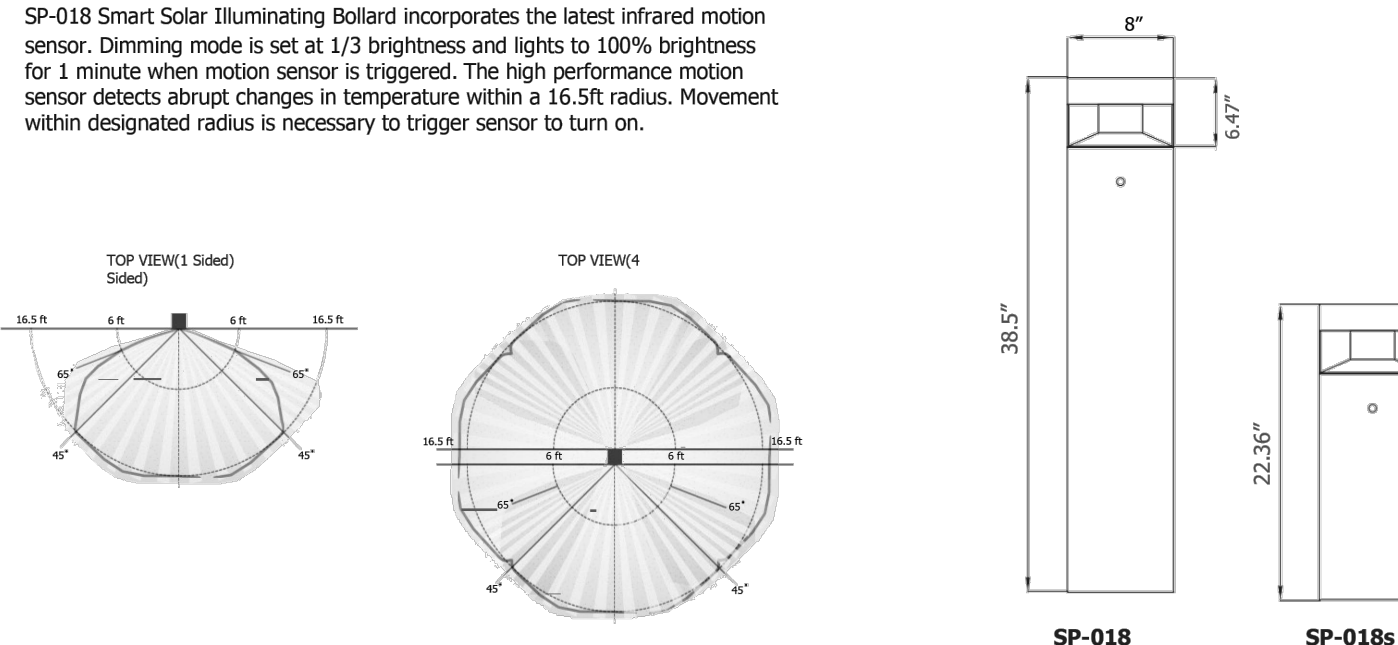


**How To Specify**  
Ordering Example: **SP018-30K-BLK-NR-AKE-1S**

Model	CCT	Finish	Distribution	Anchorage	Optional
SP018	30K (3000K)	BLK (Black)	NR (Narrow)	AKE (Embedded)	1S (1 Sensor)
SP018s	40K (4000K) 57K (5700K) AMB (Amber)	GRY (Gray) PTS (Platinum silver)	WD (Wide)	AKS (Surface Mounted)	4S (4 Sensor)

**Motion Sensor Detection type**  
SP-018 Smart Solar Illuminating Bollard incorporates the latest infrared motion sensor. Dimming mode is set at 1/3 brightness and lights to 100% brightness for 1 minute when motion sensor is triggered. The high performance motion sensor detects abrupt changes in temperature within a 16.5ft radius. Movement within designated radius is necessary to trigger sensor to turn on.

**Dimensions**



METEOR LIGHTING P: 213.255.2060 F: 213.596.3704 [www.meteor-lighting.com](http://www.meteor-lighting.com) Page 2  
\*METEOR LIGHTING reserves the right to make changes to this product at any time without prior notice and such modification shall be effective immediately.

## COMPARK VILLAGE SOUTH F1 AMD 2 - MULTIFAMILY SITE PLAN

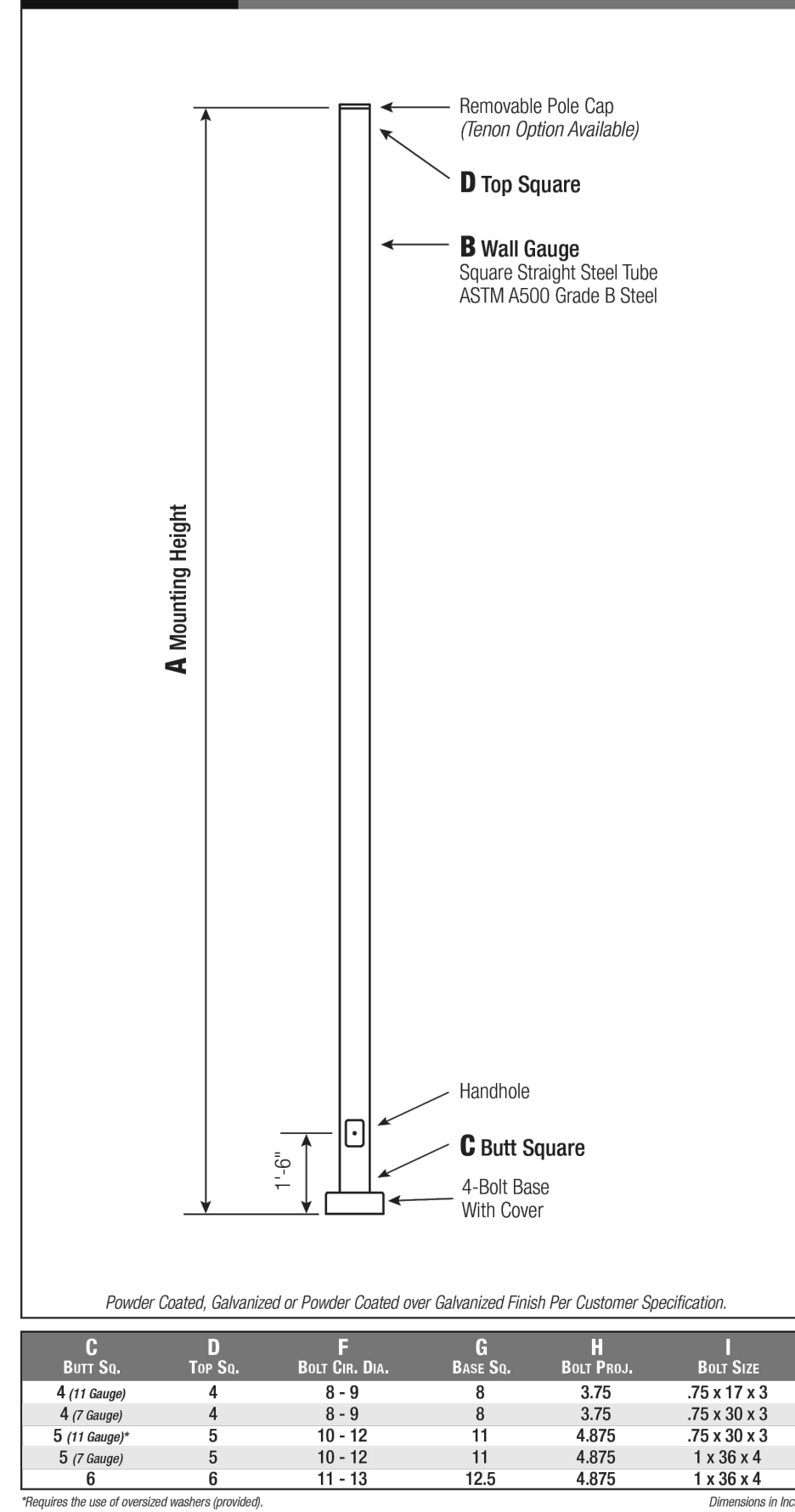
LOT 1, COMPARK VILLAGE FILING NO. 1, AMEND NO. 2  
SOUTH HALF SECTION 6, TOWNSHIP 6 SOUTH, RANGE 66 WEST OF THE 6TH PRINCIPAL MERIDIAN  
TOWN OF PARKER, COUNTY OF DOUGLAS, STATE OF COLORADO

### SITE LIGHT FIXTURE SCHEDULE

TYPE	SERVES	DESCRIPTION	MANUFACTURER CATALOG NO.	LAMPS	QUANTITY	NOTES
SA1	SITE	POLE MOUNTED FIXTURE	COOPER #PRV-C15-730-T5-SPB2	52	1	20'
SA2	SITE	POLE MOUNTED FIXTURE	COOPER #PRV-C15-730-T3-SPB2	52	24	20'
SA3	SITE	POLE MOUNTED FIXTURE	COOPER #PRV-C15-730-T3-SPB2 (DOUBLE)	52	4	20'
SA4	SITE	POLE MOUNTED FIXTURE	COOPER #PRV-C60-730-T4-SPB2	217	3	20'
SB	SITE	POLE MOUNTED FIXTURE	COOPER #PRV-C10-730-T3-SPB2	34.6	44	10'
SC	SITE	BOLLARD	METEOR #SP018-30K-BLK-WD-4S	0.7	10	10'
SF	SITE	WALL MOUNTED	COOPER #IST-SA1F-730-U-(T4W OR T4FT)-BK-SPB2	66	4	15'
SP	SITE	CARPORT MOUNTED	LEDALUX #CP-8.000-3000K	57	25	-
POLE (SA#, SB)	SITE	POLE	HAPCO #10 OR 20-B-4-(D190 OR D218)-BA	-	76	10' AND 20'

REFER TO SITE PLAN SYMBOLS AND LIGHTING TAGS FOR LIGHT FIXTURE MOUNTING AND NUMBER OF FIXTURES PER POLE

### SSS Square Straight Steel Pole No Arm — 4-Bolt Base



**Pole**  
Pole shaft shall be weather-grade, cold-rolled, commercial quality carbon steel tubing conforming to ASTM A500 Grade B. Options include 11 gauge and 7 gauge. All welds shall conform to AWS D1.1 using ER70S-6 electrodes.

**Base Style**  
4-Bolt Steel Plate Base Flange of fabricated hot rolled carbon steel conforming to ASTM A500 or equivalent (50ksi minimum yield) with 2-piece Base Cover and anchoring hardware.

**Anchorage**  
Anchorage Kit will include four (4) L-shaped Steel Anchor Bolts conforming to AASHTO M14-190 Grade 55. Ten inches (10") of threaded end will be galvanized per ASTM A153. Kits will contain eight (8) Hex Nuts, four (4) Lock Washers, and eight (8) Flat Washers (all components Galvanized Steel). A paper bolt circle template will be provided.

**Handhole**  
Reinforced, 3" x 5" Handhole with cover, stainless steel screw and backlock. A grounding provision incorporating a tapered 1/2" - 1/8" hole will be provided.

**Base Cover**  
Square ABS plastic Base Covers are standard on all SSS poles specified in BA, Black, BM, Black Bronze and BS, White. SSS poles specified in all other colors will be manufactured of metal materials. Custom specification of SSS square metal style Base Covers in BA, BM and BS powder coated finishes is available.

**Vibration Damper**  
If determined necessary by Hapco, or if specified by the customer, a first and/or second mode vibration damper will be provided.

C	D	F	G	H	I
Butt Dia.	Top Dia.	Butt Dia. Dia.	Base Dia.	Butt Dia.	Butt Dia.
4 (1/4 Gauge)	4	8 - 9	8	3.75	.75 x 17 x 3
4 (1/2 Gauge)	4	8 - 9	8	3.75	.75 x 30 x 3
5 (1/4 Gauge)	5	10 - 12	11	4.875	.75 x 30 x 3
5 (1/2 Gauge)	5	10 - 12	11	4.875	1 x 36 x 4
6	6	11 - 13	12.5	4.875	1 x 36 x 4

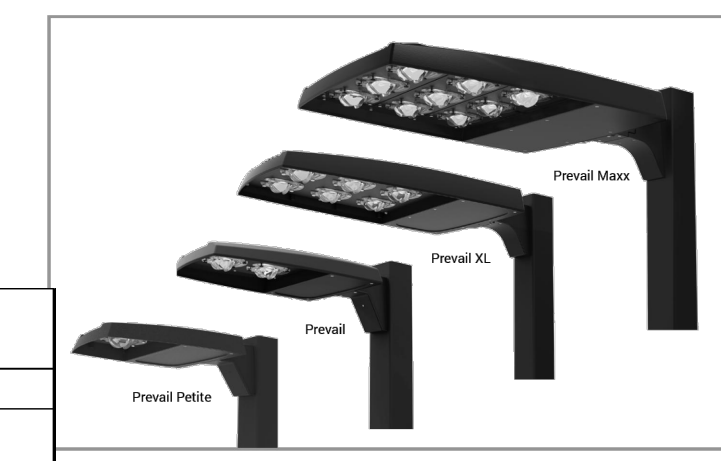
Requires the use of oversized nut/washer provided.

2 [www.hapco.com](http://www.hapco.com)

WARNING: Do not install light pole without luminaires.

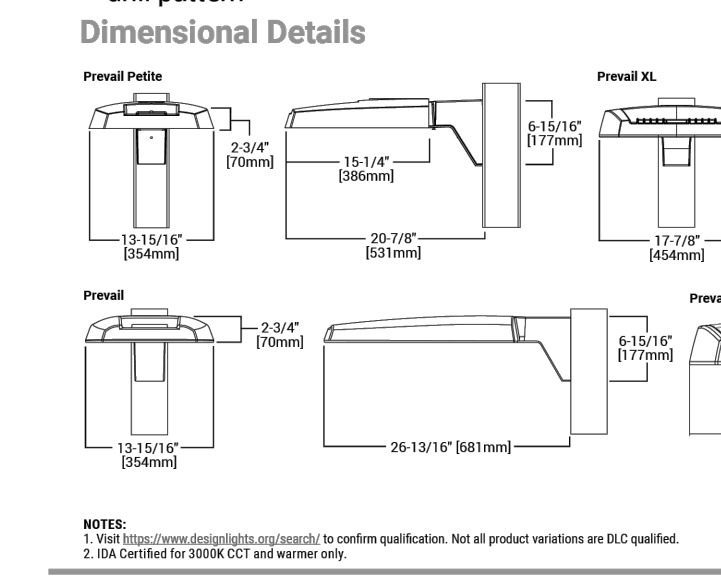
## SITE 'POLE' SERVING 'SA1, SA2, SA3, & SA4'

Project	Catalog #	Type
Prepared by	Notes	Date



- Interactive Menu**
- Ordering Information page 2
  - Mounting Details page 3, 4
  - Optical Configurations page 5
  - Product Specifications page 5
  - Energy and Performance Data page 6, 7
  - Control Options page 8

- Quick Facts**
- Lumen packages range from 4,800 - 84,000 lumens (35W - 68W)
  - Replaces 70W up to 1,000W HID equivalents
  - Efficacies up to 160 lumens per watt
  - Energy and maintenance savings up to 85% versus HID solutions
  - Standard universal quick mount arm with universal drill pattern



NOTE: 1. Visit [www.cooperlighting.com](http://www.cooperlighting.com) to confirm qualification. Not all product variations are UL qualified.  
2. UL Certified for 200K CRI and warmer only.

## Lumark Prevail LED

Area / Site Luminaire

**Product Features**

- Luminaire Technology
- BAA
- Light Affinity
- FADCC

- Product Certifications**
- ETL
  - UL
  - DLC LISTED
  - DLC PREQUALIFIED
  - FC
  - IP66
  - ida
  - 3 YEAR

- Connected Systems**
- WaveLinx PRO Wireless
  - WaveLinx LTE Wireless

## SITE LIGHT FIXTURE 'SA1, SA2, SA3, SA4, & SB'

### Lumark Prevail LED

Product Family	Light Engine	Color Temperature	Driver	Voltage	Distribution	Mounting	Color
PRV-P-Prevail Pole	C15-1 LED 4,800 Nominal Lumens	740-700K, 4000K	D-Dimming (0-10V)	UNV-Universal (120-277V)	T2-Type II	SA-M Standard	BLK/White
BAA-PRV-P-Prevail Pole BAA Compliant	C25-1 LED 13,100 Nominal Lumens	727-702K, 2700K		UNV-Universal, J41-40V	T2-Type III	AP-Cover	AP-Cover
TAA-PRV-P-Prevail Pole TAA Compliant	C25-1 LED 13,100 Nominal Lumens	730-702K, 3000K		T4-Type IV	MA-Mount Arm	BK-Black	BK-Black
PRV-P-Prevail	C15-1 LED 4,800 Nominal Lumens	740-700K, 4000K		UNV-Universal (120-277V)	T2-Type II	SA-M Standard	BLK/White
BAA-PRV-P-Prevail BAA Compliant	C25-1 LED 13,100 Nominal Lumens	727-702K, 2700K		UNV-Universal, J41-40V	T2-Type III	AP-Cover	AP-Cover
TAA-PRV-P-Prevail TAA Compliant	C25-1 LED 13,100 Nominal Lumens	730-702K, 3000K		T4-Type IV	MA-Mount Arm	BK-Black	BK-Black
PRV-XL-Prevail XL	C25-1 LED 13,100 Nominal Lumens	727-702K, 2700K		UNV-Universal (120-277V)	T2-Type II	SA-M Standard	BLK/White
BAA-PRV-XL-Prevail XL BAA Compliant	C25-1 LED 13,100 Nominal Lumens	727-702K, 2700K		UNV-Universal, J41-40V	T2-Type III	AP-Cover	AP-Cover
TAA-PRV-XL-Prevail XL TAA Compliant	C25-1 LED 13,100 Nominal Lumens	730-702K, 3000K		T4-Type IV	MA-Mount Arm	BK-Black	BK-Black
PRV-M-Prevail Max	C25-1 LED 13,100 Nominal Lumens	727-702K, 2700K		UNV-Universal (120-277V)	T2-Type II	SA-M Standard	BLK/White
BAA-PRV-M-Prevail Max BAA Compliant	C25-1 LED 13,100 Nominal Lumens	727-702K, 2700K		UNV-Universal, J41-40V	T2-Type III	AP-Cover	AP-Cover
TAA-PRV-M-Prevail Max TAA Compliant	C25-1 LED 13,100 Nominal Lumens	730-702K, 3000K		T4-Type IV	MA-Mount Arm	BK-Black	BK-Black

**Lumensafe Integrated Network Security Camera Technology Options (Add as Suffix)**

Product Family	Camera Type	Data Backhaul
L-Lumensafe Technology	H-Home Camera, High Res	B-Cellular, Factory Installed Verizon 5M Card
	Z-Zone Camera, Remote PTZ	C-Cellular, Factory Installed AT&T 5M Card
		D-Cellular, Factory Installed Verizon 5M Card
		E-Ethernet Networking

**Stock Ordering Information**

Product Family	Light Engine	Voltage	Distribution
PRV-P-Prevail	C15-1 LED 4,800 Nominal Lumens C25-1 LED 13,100 Nominal Lumens C40-1 LED 20,000 Nominal Lumens	UNV-Universal (120-277V) J41-40V	T2-Type II T4-Type IV
PRV-XL-Prevail XL	C25-1 LED 13,100 Nominal Lumens C25-1 LED 13,100 Nominal Lumens C25-1 LED 13,100 Nominal Lumens C25-1 LED 13,100 Nominal Lumens C25-1 LED 13,100 Nominal Lumens		

NOTE: 1. Stock configurations are standard 4000K/700K, bronze finish, and include the standard versatile mounting arm.  
2. Only available on PRV configurations C15, C25, C40 or 0.0.

2 [www.cooperlighting.com](http://www.cooperlighting.com) Page 2  
June 3, 2024 7:52 PM

PROJECT NUMBER  
65120950

DRAWN BY  
TV

DATE  
6/3/2025

REVISIONS

1	RFI 21
2	CAR PORTS
3	PHOTOMETRICS



PREPARED FOR CENTURY COMMUNITIES



PROJECT  
**COMPARK VILLAGE SOUTH**  
TOWN OF PARKER, COUNTY OF DOUGLAS, COLORADO 80134

SHEET TITLE  
LIGHT FIXTURE SPEC SHEETS

SHEET NUMBER  
52

**LEDALUX** CP-LKFS Lumen and Kelvin Field Selectable Canopy

CATALOG NUMBER: L70 44,000 Hours

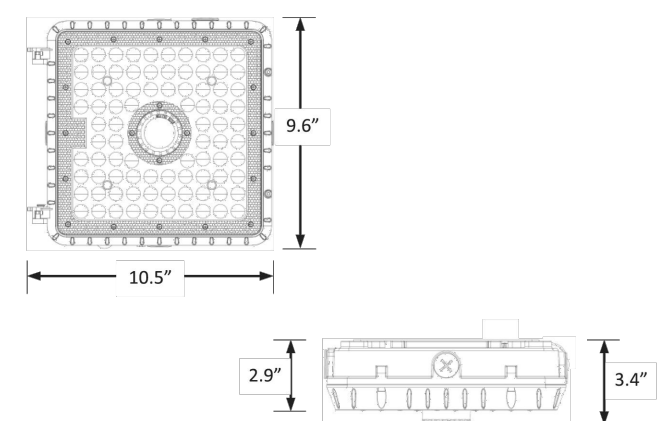


NOTES:

FIXTURE TYPE:

PROJECT:

**DIMENSIONS**



Weight: 5 lbs.

**WARRANTY**

- dLUs listed for wet locations in ambient temperatures from -40°C to 40°C (40°F to 104°F).
- IP65 rated for ingress protection.
- Lens is IK08 rated for impact.
- DLC premium approved for Fuel Pump and Parking Garage categories.
- Complies with FCC Part 15, class B.
- Complies with IEC/EN61000-4-5, input transient surge immunity protection (4kV).
- 5-year warranty on all electronics and housing.

**ORDERING INFORMATION**

Series	Nominal Lumen Output (Selectable)	Kelvin Selectable	Occupancy Sensor	Housing Color	Accessories (Order Separately)
CP	10L = 10,000/8,000/7,000	LKFS = 3000K/4000K/5000K	ODS <sup>1,2</sup> = Microwave occupancy, dimming, & daylight sensor (factory installed)	BRZ = Bronze WHI = White	MWAVEDHS-REM = Sensor remote control

<sup>1</sup>Remote control Required for programming (sold separately).  
<sup>2</sup>Default sensor settings: detection area = 100%, hold time = 20 minutes, stand-by period = 0 seconds, stand-by dimming level = 10%, daylight threshold = disabled  
<sup>3</sup>Maximum mounting height = 49 feet.

LEDALUX - a division of Mule Lighting, Inc. • 46 Baker Street Providence, RI 02905 • 800 556-7690 P 401 941-2929 F • www.LEDALUX.com

**SITE LIGHT FIXTURE 'SP'**

**LEDALUX** CP-LKFS Lumen and Kelvin Field Selectable Canopy

L70 44,000 Hours

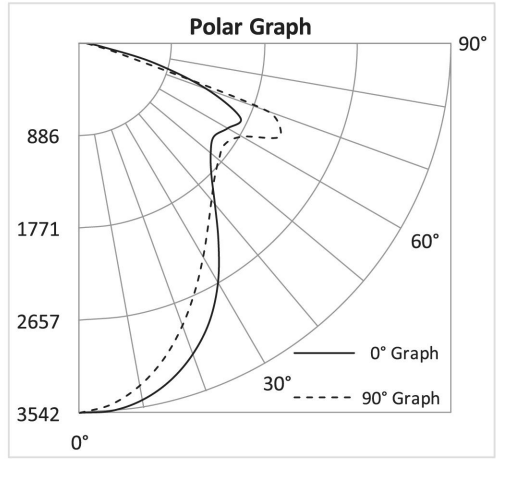
Series	Measurements	Low Lumens			Mid Lumens			High Lumens		
		3000K	4000K	5000K	3000K	4000K	5000K	3000K	4000K	5000K
CP-10L-LKFS	Lumens	6821	6962	7228	7800	8248	8312	9297	10,506	9967
	Watts	48	43	47	57	51	57	73	69	73
	Efficacy	143	163	152	137	161	147	127	152	136
	Input Current (A)	120V = 0.40A 240V = 0.20A	120V = 0.36A 240V = 0.18A	120V = 0.39A 240V = 0.20A	120V = 0.48A 240V = 0.24A	120V = 0.43A 240V = 0.21A	120V = 0.48A 240V = 0.24A	120V = 0.61A 240V = 0.30A	120V = 0.58A 240V = 0.28A	120V = 0.61A 240V = 0.30A
		277V = 0.17A	277V = 0.16A	277V = 0.17A	277V = 0.21A	277V = 0.18A	277V = 0.21A	277V = 0.26A	277V = 0.25A	277V = 0.26A

**PHOTOMETRIC DATA**

**CP-10L-LKFS Luminaire Data**

Description	Canopy 10L5K - LKFS
Total Lumens	9,993
Input Wattage	73
Efficacy (lm/W)	137
Spacing Criterion (0-180°)	1.14
Spacing Criterion (90-270°)	1.04

Zonal Lumen Summary		
Zone	Lumens	%Flxt
0-20°	1,245	12.5%
0-30°	2,530	25.3%
0-40°	3,946	39.5%
20-50°	4,143	41.5%
40-70°	4,839	48.4%
0-60°	6,942	69.5%
0-80°	9,872	98.8%
0-90°	9,993	100.0%
90-180°	0	0.0%
0-180°	9,993	100.0%



**COMPARK VILLAGE SOUTH  
F1 AMD 2 - MULTIFAMILY  
SITE PLAN**

LOT 1, COMPARK VILLAGE FILING NO. 1, AMEND NO. 2  
SOUTH HALF SECTION 6, TOWNSHIP 6 SOUTH, RANGE 66 WEST OF THE 6TH PRINCIPAL MERIDIAN  
TOWN OF PARKER, COUNTY OF DOUGLAS, STATE OF COLORADO

**McGraw-Edison Impact Elite LED**

Ordering Information  
SAMPLE NUMBER: ISC-SA1F-740-U-T3-BZ

Product Family	Light Engine Configuration	Drive Current	Color Temperature	Voltage	Distribution	Finish
ISC-Elite LED Small Cylinder	SA1-F Square	A-130mA B-100mA C-80mA E-100mA F-120mA <sup>1</sup>	722-700K, 2200K 727-700K, 2700K 728-700K, 3000K 729-700K, 3500K 730-700K, 4000K 830-800K, 3000K AMB-Ambient, 5000K <sup>1</sup>	0-120/277V 0-120V 2-120V 4-277V 0-180V <sup>1</sup> 0-240V <sup>1</sup>	T2-Type II T3-Type III T4-Type IV Forward Throw T4W-Type IV Wide SL2-Type II w/Spill Control SL3-Type III w/Spill Control SL4-Type IV w/Spill Control SL5-90° Spill Light Eliminator Left SL6-90° Spill Light Eliminator Right RW-Rectangular Wide Type I	AP-Gray BK-Black BP-Dark Platinum DM-Diaphane Metallic WH-White

Options (Add as Suffix):  
 MA-55°C High Ambient  
 AMB-After Hours Dim, 5 Hours, 50%  
 AMB25-After Hours Dim, 5 Hours, 50%  
 AMB50-After Hours Dim, 5 Hours, 50%  
 AMB75-After Hours Dim, 5 Hours, 50%  
 AMB100-After Hours Dim, 5 Hours, 50%  
 AMB150-After Hours Dim, 5 Hours, 50%  
 AMB200-After Hours Dim, 5 Hours, 50%  
 AMB300-After Hours Dim, 5 Hours, 50%  
 AMB450-After Hours Dim, 5 Hours, 50%  
 AMB600-After Hours Dim, 5 Hours, 50%  
 AMB750-After Hours Dim, 5 Hours, 50%  
 AMB900-After Hours Dim, 5 Hours, 50%  
 AMB1050-After Hours Dim, 5 Hours, 50%  
 AMB1200-After Hours Dim, 5 Hours, 50%  
 AMB1350-After Hours Dim, 5 Hours, 50%  
 AMB1500-After Hours Dim, 5 Hours, 50%  
 AMB1650-After Hours Dim, 5 Hours, 50%  
 AMB1800-After Hours Dim, 5 Hours, 50%  
 AMB2100-After Hours Dim, 5 Hours, 50%  
 AMB2400-After Hours Dim, 5 Hours, 50%  
 AMB2700-After Hours Dim, 5 Hours, 50%  
 AMB3000-After Hours Dim, 5 Hours, 50%  
 AMB3300-After Hours Dim, 5 Hours, 50%  
 AMB3600-After Hours Dim, 5 Hours, 50%  
 AMB3900-After Hours Dim, 5 Hours, 50%  
 AMB4200-After Hours Dim, 5 Hours, 50%  
 AMB4500-After Hours Dim, 5 Hours, 50%  
 AMB4800-After Hours Dim, 5 Hours, 50%  
 AMB5100-After Hours Dim, 5 Hours, 50%  
 AMB5400-After Hours Dim, 5 Hours, 50%  
 AMB5700-After Hours Dim, 5 Hours, 50%  
 AMB6000-After Hours Dim, 5 Hours, 50%  
 AMB6300-After Hours Dim, 5 Hours, 50%  
 AMB6600-After Hours Dim, 5 Hours, 50%  
 AMB6900-After Hours Dim, 5 Hours, 50%  
 AMB7200-After Hours Dim, 5 Hours, 50%  
 AMB7500-After Hours Dim, 5 Hours, 50%  
 AMB7800-After Hours Dim, 5 Hours, 50%  
 AMB8100-After Hours Dim, 5 Hours, 50%  
 AMB8400-After Hours Dim, 5 Hours, 50%  
 AMB8700-After Hours Dim, 5 Hours, 50%  
 AMB9000-After Hours Dim, 5 Hours, 50%  
 AMB9300-After Hours Dim, 5 Hours, 50%  
 AMB9600-After Hours Dim, 5 Hours, 50%  
 AMB9900-After Hours Dim, 5 Hours, 50%  
 AMB10200-After Hours Dim, 5 Hours, 50%  
 AMB10500-After Hours Dim, 5 Hours, 50%  
 AMB10800-After Hours Dim, 5 Hours, 50%  
 AMB11100-After Hours Dim, 5 Hours, 50%  
 AMB11400-After Hours Dim, 5 Hours, 50%  
 AMB11700-After Hours Dim, 5 Hours, 50%  
 AMB12000-After Hours Dim, 5 Hours, 50%  
 AMB12300-After Hours Dim, 5 Hours, 50%  
 AMB12600-After Hours Dim, 5 Hours, 50%  
 AMB12900-After Hours Dim, 5 Hours, 50%  
 AMB13200-After Hours Dim, 5 Hours, 50%  
 AMB13500-After Hours Dim, 5 Hours, 50%  
 AMB13800-After Hours Dim, 5 Hours, 50%  
 AMB14100-After Hours Dim, 5 Hours, 50%  
 AMB14400-After Hours Dim, 5 Hours, 50%  
 AMB14700-After Hours Dim, 5 Hours, 50%  
 AMB15000-After Hours Dim, 5 Hours, 50%  
 AMB15300-After Hours Dim, 5 Hours, 50%  
 AMB15600-After Hours Dim, 5 Hours, 50%  
 AMB15900-After Hours Dim, 5 Hours, 50%  
 AMB16200-After Hours Dim, 5 Hours, 50%  
 AMB16500-After Hours Dim, 5 Hours, 50%  
 AMB16800-After Hours Dim, 5 Hours, 50%  
 AMB17100-After Hours Dim, 5 Hours, 50%  
 AMB17400-After Hours Dim, 5 Hours, 50%  
 AMB17700-After Hours Dim, 5 Hours, 50%  
 AMB18000-After Hours Dim, 5 Hours, 50%  
 AMB18300-After Hours Dim, 5 Hours, 50%  
 AMB18600-After Hours Dim, 5 Hours, 50%  
 AMB18900-After Hours Dim, 5 Hours, 50%  
 AMB19200-After Hours Dim, 5 Hours, 50%  
 AMB19500-After Hours Dim, 5 Hours, 50%  
 AMB19800-After Hours Dim, 5 Hours, 50%  
 AMB20100-After Hours Dim, 5 Hours, 50%  
 AMB20400-After Hours Dim, 5 Hours, 50%  
 AMB20700-After Hours Dim, 5 Hours, 50%  
 AMB21000-After Hours Dim, 5 Hours, 50%  
 AMB21300-After Hours Dim, 5 Hours, 50%  
 AMB21600-After Hours Dim, 5 Hours, 50%  
 AMB21900-After Hours Dim, 5 Hours, 50%  
 AMB22200-After Hours Dim, 5 Hours, 50%  
 AMB22500-After Hours Dim, 5 Hours, 50%  
 AMB22800-After Hours Dim, 5 Hours, 50%  
 AMB23100-After Hours Dim, 5 Hours, 50%  
 AMB23400-After Hours Dim, 5 Hours, 50%  
 AMB23700-After Hours Dim, 5 Hours, 50%  
 AMB24000-After Hours Dim, 5 Hours, 50%  
 AMB24300-After Hours Dim, 5 Hours, 50%  
 AMB24600-After Hours Dim, 5 Hours, 50%  
 AMB24900-After Hours Dim, 5 Hours, 50%  
 AMB25200-After Hours Dim, 5 Hours, 50%  
 AMB25500-After Hours Dim, 5 Hours, 50%  
 AMB25800-After Hours Dim, 5 Hours, 50%  
 AMB26100-After Hours Dim, 5 Hours, 50%  
 AMB26400-After Hours Dim, 5 Hours, 50%  
 AMB26700-After Hours Dim, 5 Hours, 50%  
 AMB27000-After Hours Dim, 5 Hours, 50%  
 AMB27300-After Hours Dim, 5 Hours, 50%  
 AMB27600-After Hours Dim, 5 Hours, 50%  
 AMB27900-After Hours Dim, 5 Hours, 50%  
 AMB28200-After Hours Dim, 5 Hours, 50%  
 AMB28500-After Hours Dim, 5 Hours, 50%  
 AMB28800-After Hours Dim, 5 Hours, 50%  
 AMB29100-After Hours Dim, 5 Hours, 50%  
 AMB29400-After Hours Dim, 5 Hours, 50%  
 AMB29700-After Hours Dim, 5 Hours, 50%  
 AMB30000-After Hours Dim, 5 Hours, 50%  
 AMB30300-After Hours Dim, 5 Hours, 50%  
 AMB30600-After Hours Dim, 5 Hours, 50%  
 AMB30900-After Hours Dim, 5 Hours, 50%  
 AMB31200-After Hours Dim, 5 Hours, 50%  
 AMB31500-After Hours Dim, 5 Hours, 50%  
 AMB31800-After Hours Dim, 5 Hours, 50%  
 AMB32100-After Hours Dim, 5 Hours, 50%  
 AMB32400-After Hours Dim, 5 Hours, 50%  
 AMB32700-After Hours Dim, 5 Hours, 50%  
 AMB33000-After Hours Dim, 5 Hours, 50%  
 AMB33300-After Hours Dim, 5 Hours, 50%  
 AMB33600-After Hours Dim, 5 Hours, 50%  
 AMB33900-After Hours Dim, 5 Hours, 50%  
 AMB34200-After Hours Dim, 5 Hours, 50%  
 AMB34500-After Hours Dim, 5 Hours, 50%  
 AMB34800-After Hours Dim, 5 Hours, 50%  
 AMB35100-After Hours Dim, 5 Hours, 50%  
 AMB35400-After Hours Dim, 5 Hours, 50%  
 AMB35700-After Hours Dim, 5 Hours, 50%  
 AMB36000-After Hours Dim, 5 Hours, 50%  
 AMB36300-After Hours Dim, 5 Hours, 50%  
 AMB36600-After Hours Dim, 5 Hours, 50%  
 AMB36900-After Hours Dim, 5 Hours, 50%  
 AMB37200-After Hours Dim, 5 Hours, 50%  
 AMB37500-After Hours Dim, 5 Hours, 50%  
 AMB37800-After Hours Dim, 5 Hours, 50%  
 AMB38100-After Hours Dim, 5 Hours, 50%  
 AMB38400-After Hours Dim, 5 Hours, 50%  
 AMB38700-After Hours Dim, 5 Hours, 50%  
 AMB39000-After Hours Dim, 5 Hours, 50%  
 AMB39300-After Hours Dim, 5 Hours, 50%  
 AMB39600-After Hours Dim, 5 Hours, 50%  
 AMB39900-After Hours Dim, 5 Hours, 50%  
 AMB40200-After Hours Dim, 5 Hours, 50%  
 AMB40500-After Hours Dim, 5 Hours, 50%  
 AMB40800-After Hours Dim, 5 Hours, 50%  
 AMB41100-After Hours Dim, 5 Hours, 50%  
 AMB41400-After Hours Dim, 5 Hours, 50%  
 AMB41700-After Hours Dim, 5 Hours, 50%  
 AMB42000-After Hours Dim, 5 Hours, 50%  
 AMB42300-After Hours Dim, 5 Hours, 50%  
 AMB42600-After Hours Dim, 5 Hours, 50%  
 AMB42900-After Hours Dim, 5 Hours, 50%  
 AMB43200-After Hours Dim, 5 Hours, 50%  
 AMB43500-After Hours Dim, 5 Hours, 50%  
 AMB43800-After Hours Dim, 5 Hours, 50%  
 AMB44100-After Hours Dim, 5 Hours, 50%  
 AMB44400-After Hours Dim, 5 Hours, 50%  
 AMB44700-After Hours Dim, 5 Hours, 50%  
 AMB45000-After Hours Dim, 5 Hours, 50%  
 AMB45300-After Hours Dim, 5 Hours, 50%  
 AMB45600-After Hours Dim, 5 Hours, 50%  
 AMB45900-After Hours Dim, 5 Hours, 50%  
 AMB46200-After Hours Dim, 5 Hours, 50%  
 AMB46500-After Hours Dim, 5 Hours, 50%  
 AMB46800-After Hours Dim, 5 Hours, 50%  
 AMB47100-After Hours Dim, 5 Hours, 50%  
 AMB47400-After Hours Dim, 5 Hours, 50%  
 AMB47700-After Hours Dim, 5 Hours, 50%  
 AMB48000-After Hours Dim, 5 Hours, 50%  
 AMB48300-After Hours Dim, 5 Hours, 50%  
 AMB48600-After Hours Dim, 5 Hours, 50%  
 AMB48900-After Hours Dim, 5 Hours, 50%  
 AMB49200-After Hours Dim, 5 Hours, 50%  
 AMB49500-After Hours Dim, 5 Hours, 50%  
 AMB49800-After Hours Dim, 5 Hours, 50%  
 AMB50100-After Hours Dim, 5 Hours, 50%  
 AMB50400-After Hours Dim, 5 Hours, 50%  
 AMB50700-After Hours Dim, 5 Hours, 50%  
 AMB51000-After Hours Dim, 5 Hours, 50%  
 AMB51300-After Hours Dim, 5 Hours, 50%  
 AMB51600-After Hours Dim, 5 Hours, 50%  
 AMB51900-After Hours Dim, 5 Hours, 50%  
 AMB52200-After Hours Dim, 5 Hours, 50%  
 AMB52500-After Hours Dim, 5 Hours, 50%  
 AMB52800-After Hours Dim, 5 Hours, 50%  
 AMB53100-After Hours Dim, 5 Hours, 50%  
 AMB53400-After Hours Dim, 5 Hours, 50%  
 AMB53700-After Hours Dim, 5 Hours, 50%  
 AMB54000-After Hours Dim, 5 Hours, 50%  
 AMB54300-After Hours Dim, 5 Hours, 50%  
 AMB54600-After Hours Dim, 5 Hours, 50%  
 AMB54900-After Hours Dim, 5 Hours, 50%  
 AMB55200-After Hours Dim, 5 Hours, 50%  
 AMB55500-After Hours Dim, 5 Hours, 50%  
 AMB55800-After Hours Dim, 5 Hours, 50%  
 AMB56100-After Hours Dim, 5 Hours, 50%  
 AMB56400-After Hours Dim, 5 Hours, 50%  
 AMB56700-After Hours Dim, 5 Hours, 50%  
 AMB57000-After Hours Dim, 5 Hours, 50%  
 AMB57300-After Hours Dim, 5 Hours, 50%  
 AMB57600-After Hours Dim, 5 Hours, 50%  
 AMB57900-After Hours Dim, 5 Hours, 50%  
 AMB58200-After Hours Dim, 5 Hours, 50%  
 AMB58500-After Hours Dim, 5 Hours, 50%  
 AMB58800-After Hours Dim, 5 Hours, 50%  
 AMB59100-After Hours Dim, 5 Hours, 50%  
 AMB59400-After Hours Dim, 5 Hours, 50%  
 AMB59700-After Hours Dim, 5 Hours, 50%  
 AMB60000-After Hours Dim, 5 Hours, 50%  
 AMB60300-After Hours Dim, 5 Hours, 50%  
 AMB60600-After Hours Dim, 5 Hours, 50%  
 AMB60900-After Hours Dim, 5 Hours, 50%  
 AMB61200-After Hours Dim, 5 Hours, 50%  
 AMB61500-After Hours Dim, 5 Hours, 50%  
 AMB61800-After Hours Dim, 5 Hours, 50%  
 AMB62100-After Hours Dim, 5 Hours, 50%  
 AMB62400-After Hours Dim, 5 Hours, 50%  
 AMB62700-After Hours Dim, 5 Hours, 50%  
 AMB63000-After Hours Dim, 5 Hours, 50%  
 AMB63300-After Hours Dim, 5 Hours, 50%  
 AMB63600-After Hours Dim, 5 Hours, 50%  
 AMB63900-After Hours Dim, 5 Hours, 50%  
 AMB64200-After Hours Dim, 5 Hours, 50%  
 AMB64500-After Hours Dim, 5 Hours, 50%  
 AMB64800-After Hours Dim, 5 Hours, 50%  
 AMB65100-After Hours Dim, 5 Hours, 50%  
 AMB65400-After Hours Dim, 5 Hours, 50%  
 AMB65700-After Hours Dim, 5 Hours, 50%  
 AMB66000-After Hours Dim, 5 Hours, 50%  
 AMB66300-After Hours Dim, 5 Hours, 50%  
 AMB66600-After Hours Dim, 5 Hours, 50%  
 AMB66900-After Hours Dim, 5 Hours, 50%  
 AMB67200-After Hours Dim, 5 Hours, 50%  
 AMB67500-After Hours Dim, 5 Hours, 50%  
 AMB67800-After Hours Dim, 5 Hours, 50%  
 AMB68100-After Hours Dim, 5 Hours, 50%  
 AMB68400-After Hours Dim, 5 Hours, 50%  
 AMB68700-After Hours Dim, 5 Hours, 50%  
 AMB69000-After Hours Dim, 5 Hours, 50%  
 AMB69300-After Hours Dim, 5 Hours, 50%  
 AMB69600-After Hours Dim, 5 Hours, 50%  
 AMB69900-After Hours Dim, 5 Hours, 50%  
 AMB70200-After Hours Dim, 5 Hours, 50%  
 AMB70500-After Hours Dim, 5 Hours, 50%  
 AMB70800-After Hours Dim, 5 Hours, 50%  
 AMB71100-After Hours Dim, 5 Hours, 50%  
 AMB71400-After Hours Dim, 5 Hours, 50%  
 AMB71700-After Hours Dim, 5 Hours, 50%  
 AMB72000-After Hours Dim, 5 Hours, 50%  
 AMB72300-After Hours Dim, 5 Hours, 50%  
 AMB72600-After Hours Dim, 5 Hours, 50%  
 AMB72900-After Hours Dim, 5 Hours, 50%  
 AMB73200-After Hours Dim, 5 Hours, 50%  
 AMB73500-After Hours Dim, 5 Hours, 50%  
 AMB73800-After Hours Dim, 5 Hours, 50%  
 AMB74100-After Hours Dim, 5 Hours, 50%  
 AMB74400-After Hours Dim, 5 Hours, 50%  
 AMB74700-After Hours Dim, 5 Hours, 50%  
 AMB75000-After Hours Dim, 5 Hours, 50%  
 AMB75300-After Hours Dim, 5 Hours, 50%  
 AMB75600-After Hours Dim, 5 Hours, 50%  
 AMB75900-After Hours Dim, 5 Hours, 50%  
 AMB76200-After Hours Dim, 5 Hours, 50%  
 AMB76500-After Hours Dim, 5 Hours, 50%  
 AMB76800-After Hours Dim, 5 Hours, 50%  
 AMB77100-After Hours Dim, 5 Hours, 50%  
 AMB77400-After Hours Dim, 5 Hours, 50%  
 AMB77700-After Hours Dim, 5 Hours, 50%  
 AMB78000-After Hours Dim, 5 Hours, 50%  
 AMB78300-After Hours Dim, 5 Hours, 50%  
 AMB78600-After Hours Dim, 5 Hours, 50%  
 AMB78900-After Hours Dim, 5 Hours, 50%  
 AMB79200-After Hours Dim, 5 Hours, 50%  
 AMB79500-After Hours Dim, 5 Hours, 50%  
 AMB79800-After Hours Dim, 5 Hours, 50%  
 AMB80100-After Hours Dim, 5 Hours, 50%  
 AMB80400-After Hours Dim, 5 Hours, 50%  
 AMB80700-After Hours Dim, 5 Hours, 50%  
 AMB81000-After Hours Dim, 5 Hours, 50%  
 AMB81300-After Hours Dim, 5 Hours, 50%  
 AMB81600-After Hours Dim, 5 Hours, 50%  
 AMB81900-After Hours Dim, 5 Hours, 50%  
 AMB82200-After Hours Dim, 5 Hours, 50%  
 AMB82500-After Hours Dim, 5 Hours, 50%  
 AMB82800-After Hours Dim, 5 Hours, 50%  
 AMB83100-After Hours Dim, 5 Hours, 50%  
 AMB83400-After Hours Dim, 5 Hours, 50%  
 AMB83700-After Hours Dim, 5 Hours, 50%  
 AMB84000-After Hours Dim, 5 Hours, 50%  
 AMB84300-After Hours Dim, 5 Hours, 50%  
 AMB84600-After Hours Dim, 5 Hours, 50%  
 AMB84900-After Hours Dim, 5 Hours, 50%  
 AMB85200-After Hours Dim, 5 Hours, 50%  
 AMB85500-After Hours Dim, 5 Hours, 50%  
 AMB85800-After Hours Dim, 5 Hours, 50%  
 AMB86100-After Hours Dim, 5 Hours, 50%  
 AMB86400-After Hours Dim, 5 Hours, 50%  
 AMB86700-After Hours Dim, 5 Hours, 50%  
 AMB87000-After Hours Dim, 5 Hours, 50%  
 AMB87300-After Hours Dim, 5 Hours, 50%  
 AMB87600-After Hours Dim, 5 Hours, 50%  
 AMB87900-After Hours Dim, 5 Hours, 50%  
 AMB88200-After Hours Dim, 5 Hours, 50%  
 AMB88500-After Hours Dim, 5 Hours, 50%  
 AMB88800-After Hours Dim, 5 Hours, 50%  
 AMB89100-After Hours Dim, 5 Hours, 50%  
 AMB89400-After Hours Dim, 5 Hours, 50%  
 AMB89700-After Hours Dim, 5 Hours, 50%  
 AMB90000-After Hours Dim, 5 Hours, 50%  
 AMB90300-After Hours Dim, 5 Hours, 50%  
 AMB90600-After Hours Dim, 5 Hours, 50%  
 AMB90900-After Hours Dim, 5 Hours, 50%  
 AMB91200-After Hours Dim, 5 Hours, 50%  
 AMB91500-After Hours Dim, 5 Hours, 50%  
 AMB91800-After Hours Dim, 5 Hours, 50%  
 AMB92100-After Hours Dim, 5 Hours, 50%  
 AMB92400-After Hours Dim, 5 Hours, 50%  
 AMB92700-After Hours Dim, 5 Hours, 50%  
 AMB93000-After Hours Dim, 5 Hours, 50%  
 AMB93300-After Hours Dim, 5 Hours, 50%  
 AMB93600-After Hours Dim, 5 Hours, 50%  
 AMB93900-After Hours Dim, 5 Hours, 50%  
 AMB94200-After Hours Dim, 5 Hours, 50%  
 AMB94500-After Hours Dim, 5 Hours, 50%  
 AMB94800-After Hours Dim, 5 Hours, 50%  
 AMB95100-After Hours Dim, 5 Hours, 50%  
 AMB95400-After Hours Dim, 5 Hours, 50%  
 AMB95700-After Hours Dim, 5 Hours, 50%  
 AMB96000-After Hours Dim, 5 Hours, 50%  
 AMB96300-After Hours Dim, 5 Hours, 50%  
 AMB96600-After Hours Dim, 5 Hours, 50%  
 AMB96900-After Hours Dim, 5 Hours, 50%  
 AMB97200-After Hours Dim, 5 Hours, 50%  
 AMB97500-After Hours Dim, 5 Hours, 50%  
 AMB97800-After Hours Dim, 5 Hours, 50%  
 AMB98100-After Hours Dim, 5 Hours, 50%  
 AMB98400-After Hours Dim, 5 Hours, 50%  
 AMB98700-After Hours Dim, 5 Hours, 50%  
 AMB99000-After Hours Dim, 5 Hours, 50%  
 AMB99300-After Hours Dim, 5 Hours, 50%  
 AMB99600-After Hours Dim, 5 Hours, 50%  
 AMB99900-After Hours Dim, 5 Hours, 50%  
 AMB100200-After Hours Dim, 5 Hours, 50%  
 AMB100500-After Hours Dim, 5 Hours, 50%  
 AMB100800-After Hours Dim, 5 Hours, 50%  
 AMB101100-After Hours Dim, 5 Hours, 50