

COMPARK VILLAGE SOUTH
F1 AMD 2 - MULTIFAMILY
SITE PLAN

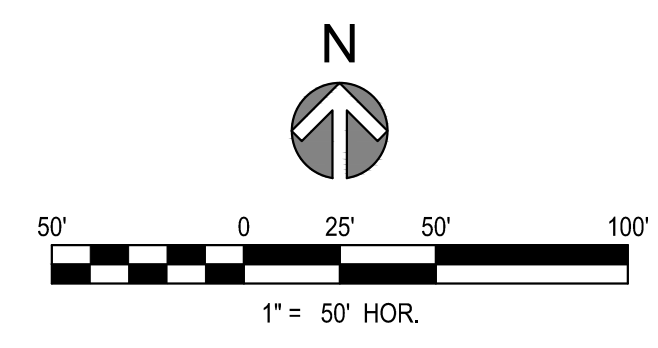
LOT 1, COMPARK VILLAGE FILING NO. 1, AMEND NO. 2
SOUTH HALF SECTION 6, TOWNSHIP 6 SOUTH, RANGE 66 WEST OF THE 6TH PRINCIPAL MERIDIAN
TOWN OF PARKER, COUNTY OF DOUGLAS, STATE OF COLORADO

PROJECT NUMBER
65120950

DRAWN BY
TV

DATE
6/3/2025

REVISIONS
1 RFI 21
2 CAR PORTS
3 EV CHARGERS



MATCH LINE SEE SHEET 4

LEGEND / KEYNOTES

- PARKING SPACE COUNT
- PROPERTY LINE
- SIGN
- R1-1 (30' x 30')
- R7-8 (12' x 18')
- R7-8 P (12' x 9')
- R7-1 (SP) (12' x 18')
- R2-1 (SP) (12' x 18')
- EV CHARGER
- PAVEMENT MARKING OF INTERNATIONAL SYMBOL OF ACCESSIBILITY
- CAR PORT
- EV CHARGER



PREPARED FOR CENTURY COMMUNITIES



PROJECT
COMPARK VILLAGE SOUTH

TOWN OF PARKER, COUNTY OF DOUGLAS, COLORADO 80134

NOTES

1. DIMENSIONS ARE TO FLOWLINE UNLESS OTHERWISE NOTED.

SHEET TITLE
SITE PLAN

SHEET NUMBER
3

COMPARK VILLAGE SOUTH
F1 AMD 2 - MULTIFAMILY
SITE PLAN

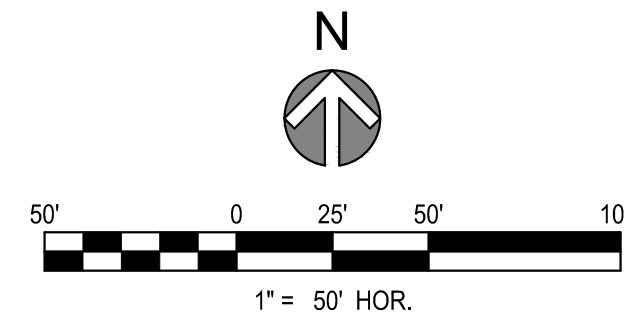
LOT 1, COMPARK VILLAGE FILING NO. 1, AMEND NO. 2
SOUTH HALF SECTION 6, TOWNSHIP 6 SOUTH, RANGE 66 WEST OF THE 6TH PRINCIPAL MERIDIAN
TOWN OF PARKER, COUNTY OF DOUGLAS, STATE OF COLORADO

PROJECT NUMBER
65120950

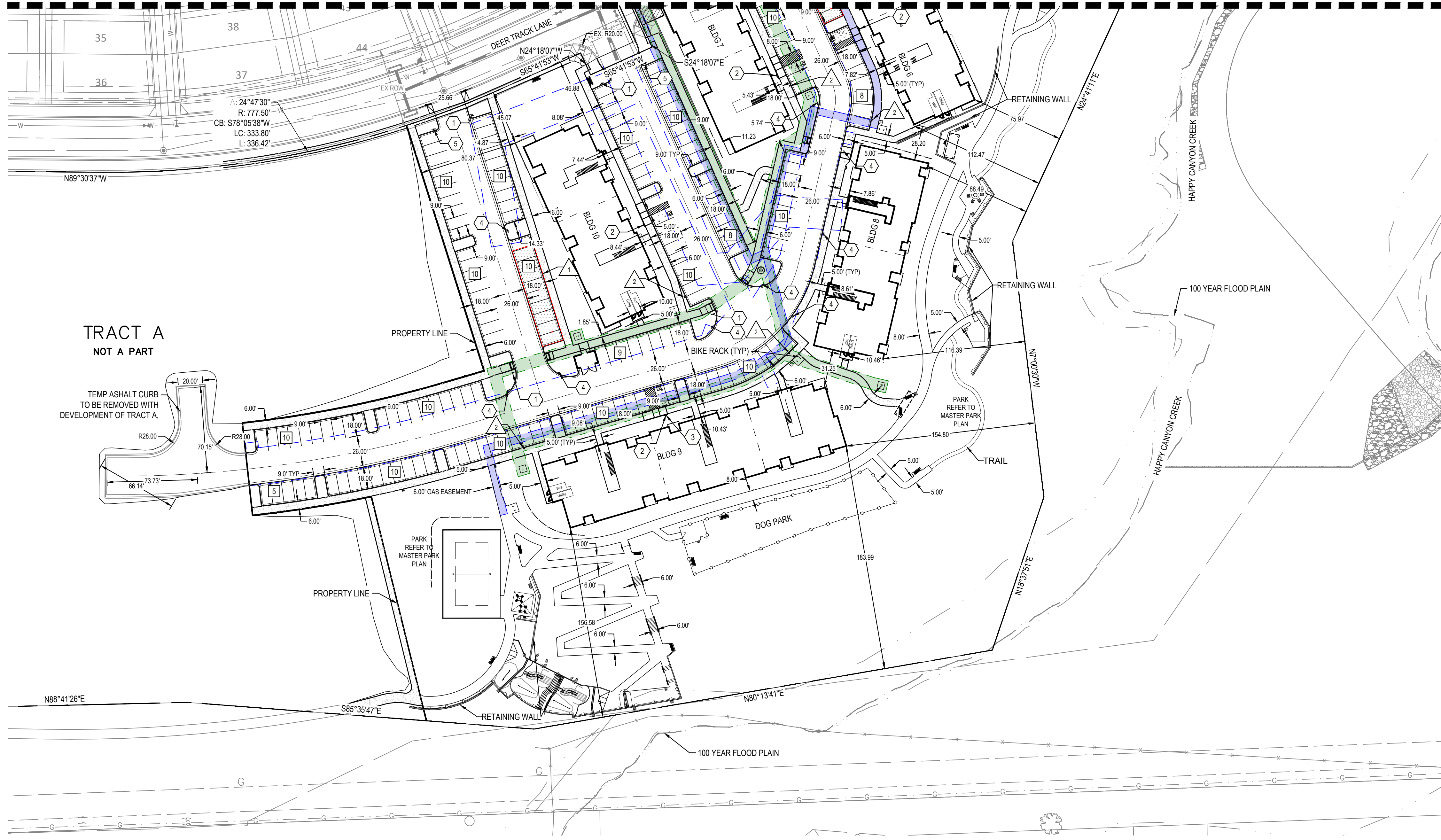
DRAWN BY
TV

DATE
6/3/2025

REVISIONS
1 RFI 21
2 CAR PORTS
3 EV CHARGERS



MATCH LINE SEE SHEET 3



LEGEND / KEYNOTES

- PARKING SPACE COUNT
- PROPERTY LINE
- SIGN
- R1-1 (30' x 30')
- R7-8 (12' x 18')
- R7-8 P (12' x 9')
- R7-1 (SP) (12' x 18')
- R2-1 (SP) (12' x 18')
- EV CHARGER
- PAVEMENT MARKING OF INTERNATIONAL SYMBOL OF ACCESSIBILITY
- CAR PORT
- EV CHARGER

NOTES
1. DIMENSIONS ARE TO FLOWLINE UNLESS OTHERWISE NOTED.



PREPARED FOR CENTURY COMMUNITIES



PROJECT
COMPARK VILLAGE SOUTH

TOWN OF PARKER, COUNTY OF DOUGLAS, COLORADO 80134

SHEET TITLE
SITE PLAN

SHEET NUMBER
4

**COMPARK VILLAGE SOUTH
F1 AMD 2 - MULTIFAMILY
SITE PLAN**
LOT 2, COMPARK VILLAGE FILING NO. 1, AMEND NO. 2
SOUTH HALF SECTION 6, TOWNSHIP 6 SOUTH, RANGE 66 WEST OF THE 6TH PRINCIPAL MERIDIAN
TOWN OF PARKER, COUNTY OF DOUGLAS, STATE OF COLORADO

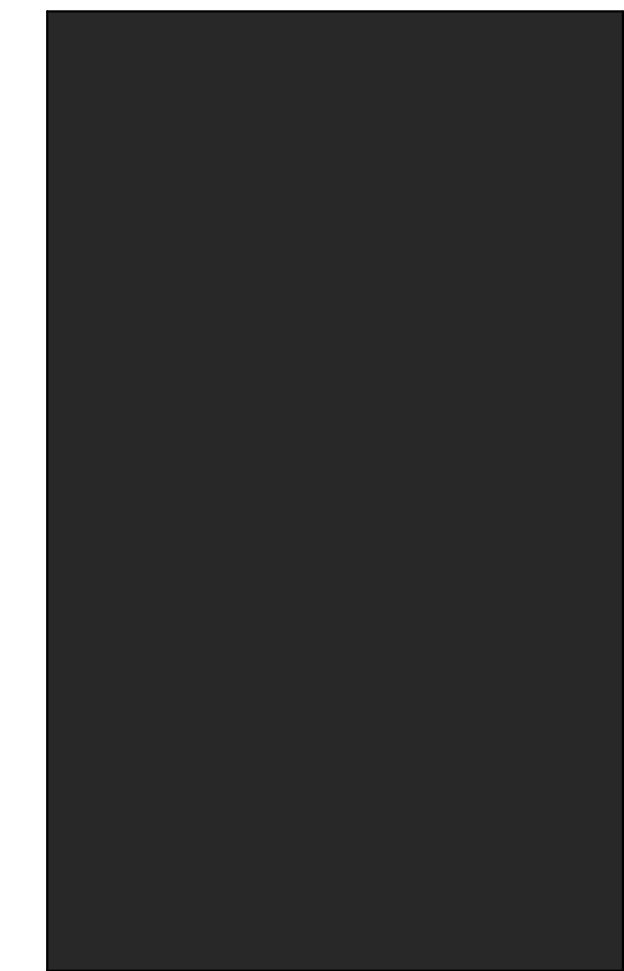
PROJECT NUMBER
210512

DRAWN BY

DATE
03/11/2025



Architecture + Planning
820 16th Street, Suite 500
Denver, CO 80202
ktgy.com
303.825.6400

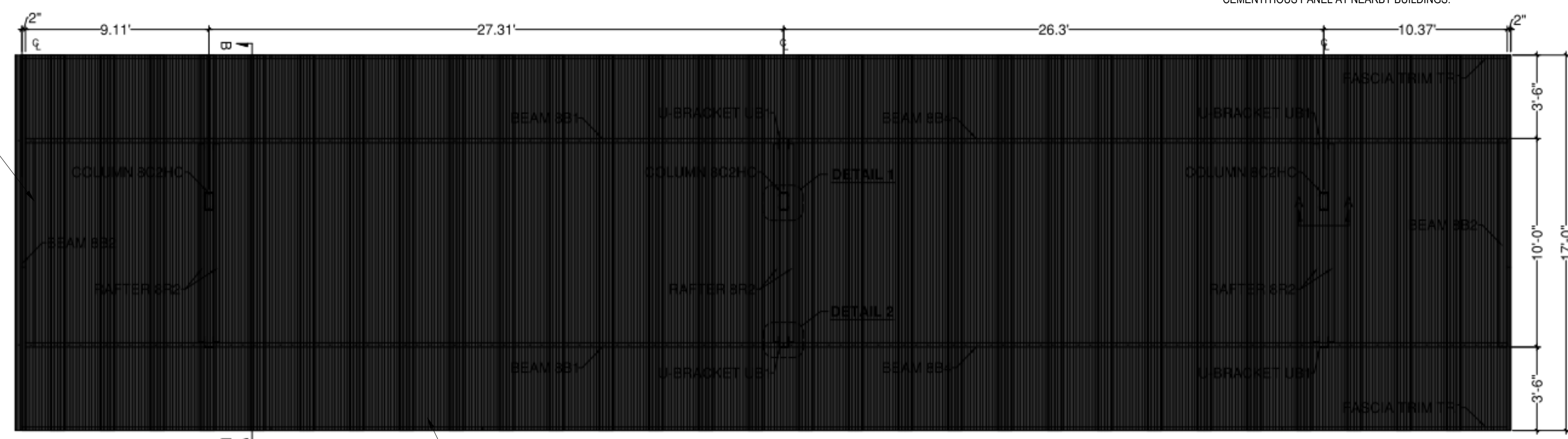
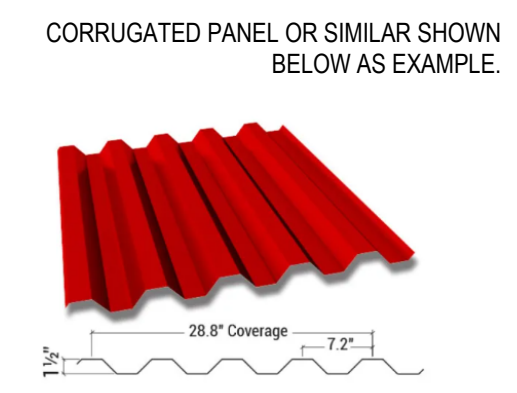


MATERIALS

STEEL CORRUGATED ROOF AND STEEL STRAIGHT FASCIA TRIM WRAPPING PERIMETER OF ROOF PANELS TO BE PAINTED WITH SILICONE-MODIFIED POLYESTER PAINT IN SHERWIN WILLIAMS TRICORN BLACK TO MATCH BUILDING STEEL BALCONY RAILINGS AND STEEL AWNINGS AT BUILDING ENTRIES.

STEEL COLUMNS SUPPORTING CORRUGATED STEEL ROOF PANELS TO BE PAINTED SHERWIN WILLIAMS CITY LOFT TO MATCH VERTICAL SIDING AND CEMENTITIOUS PANEL AT NEARBY BUILDINGS.

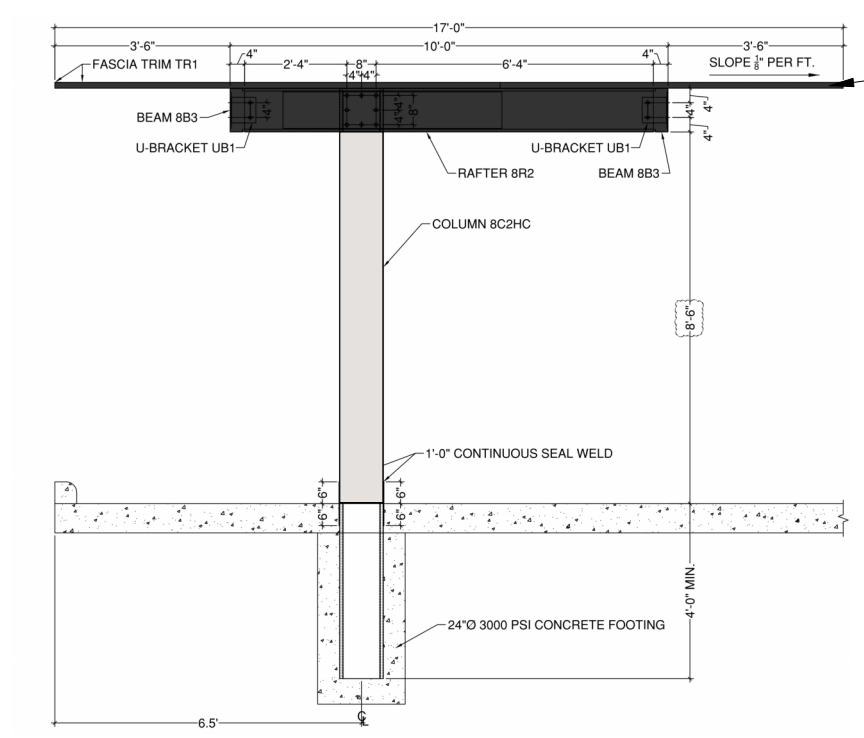
CARPORT ROOF IS CORRUGATED STEEL PANELS PAINTED WITH HIGHLY DURABLE SILICONE-MODIFIED POLYESTER PAINT TO WITHSTAND EXTREME WEATHER AND TEMPERATURE CHANGES USING A RESIN TO BIND PIGMENT TO METAL SURFACES. THE ROOF COLOR WILL MATCH THE SHERWIN WILLIAMS TRICORN BLACK USED ON THE BALCONY RAILINGS AND STEEL AWNINGS AT THE BUILDINGS. STRAIGHT FASCIA TRIM WRAPS THE ENTIRE PERIMETER OF THE ROOF SO NO CORRUGATED EDGES WILL BE VISIBLE.



ROOF PLAN

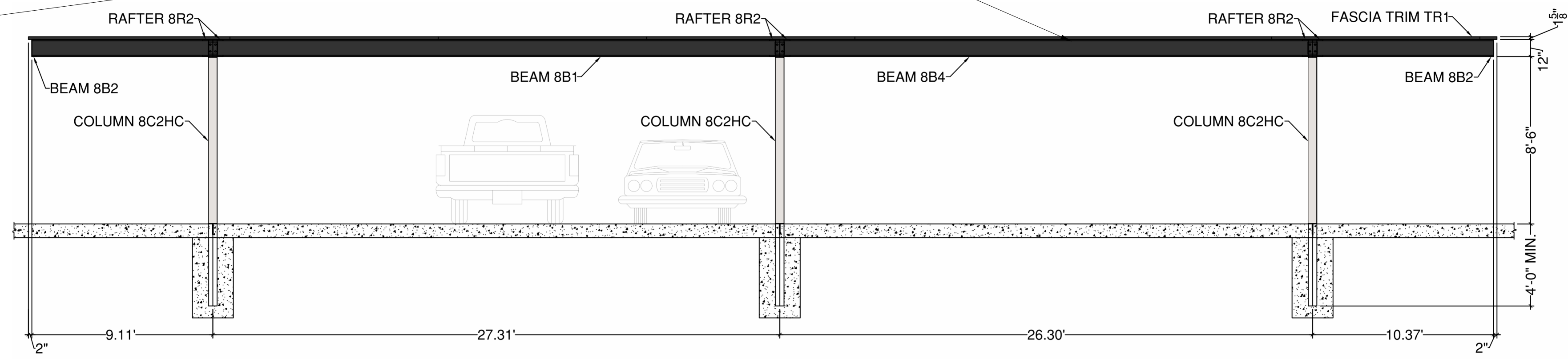
CARPORT #3 ROOF PLAN, TYPICAL FINISH

FINISH ON ALL VISIBLE PORTIONS OF CAPORT ROOFS TO BE SHERWIN WILLIAMS TRICORN BLACK AND COLUMNS TO BE SHERWIN WILLIAMS CITY LOFT



SIDE ELEVATION

CARPORT #3 SIDE ELEVATION, TYPICAL FINISH



FRONT ELEVATION

CARPORT #3 FRONT ELEVATION, TYPICAL FINISH

PREPARED FOR CENTURY COMMUNITIES



PROJECT

COMPARK VILLAGE SOUTH

TOWN OF PARKER, COUNTY OF DOUGLAS, COLORADO 80134

SHEET TITLE

TYP CARPORT ELEVATION & PLAN

SHEET NUMBER

A1-00

COMPARK VILLAGE SOUTH
F1 AMD 2 - MULTIFAMILY
SITE PLAN

LOT 1, COMPARK VILLAGE FILING NO. 1, AMEND NO. 2
SOUTH HALF SECTION 6, TOWNSHIP 6 SOUTH, RANGE 66 WEST OF THE 6TH PRINCIPAL MERIDIAN
TOWN OF PARKER, COUNTY OF DOUGLAS, STATE OF COLORADO



GENERAL NOTES:

1. ANY PROPOSED LIGHT FIXTURES INSTALLED ON PRIVATE PROPERTY, ADJACENT TO THE PUBLIC RIGHT-OF-WAY, SHALL BE ORIENTED IN SUCH A MANNER OR LIMITED IN LUMEN OUTPUT TO PREVENT GLARE PROBLEMS AND SHALL NOT EXCEED NATIONAL I.E.S. LIGHTING STANDARDS FOR DISABILITY GLARE.

SITE LIGHT FIXTURE SCHEDULE

TYPE	SERVES	DESCRIPTION	MANUFACTURER CATALOG NO.	LAMPS	QUANTITY	NOTES
SA1	SITE	POLE MOUNTED FIXTURE	COOPER #PRV-C15-730-T5-SPB2	52	1	20'
SA2	SITE	POLE MOUNTED FIXTURE	COOPER #PRV-C15-730-T3-SPB2	52	24	20'
SA3	SITE	POLE MOUNTED FIXTURE	COOPER #PRV-C15-730-T3-SPB2 (DOUBLE)	52	4	20'
SA4	SITE	POLE MOUNTED FIXTURE	COOPER #PRV-C60-730-T4-SPB2	217	3	20'
SB	SITE	POLE MOUNTED FIXTURE	COOPER #PRV9-C10-730-T3-SPB2	34.6	41	10'
SC	SITE	BOLLARD	METEOR #SP018-30K-BLK-WD-4S	0.7	10	10'
SF	SITE	WALL MOUNTED	COOPER #ST-SA1F-730-U(T4W OR T4T)-BK-SPB2	66	4	15'
SP	SITE	CARPORT MOUNTED	LEDALUX #CP-8,000-3000K	57	24	-
POLE (SA#, SB)	SITE	POLE	HAPCO (#10 OR 20)-B-4-(D190 OR D218)-BA	-	73	10' AND 20'

REFER TO SITE PLAN SYMBOLS AND LIGHTING TAGS FOR LIGHT FIXTURE MOUNTING AND NUMBER OF FIXTURES PER POLE

CALCULATION SUMMARY

LABEL	UNITS	AVG	MAX	MIN	AVG/MIN	MAX/MIN
LANDSCAPE PATH	FC	1.22	4.0	0.1	12.2	40.0
LANDSCAPE RAMP	FC	1.01	2.5	0.3	3.37	8.33
LANDSCAPE STEPS	FC	0.96	1.8	0.5	1.92	3.60
PARKING	FC	2.03	4.8	0.8	2.54	6.00
PATH 1	FC	2.58	3.9	1.1	2.35	3.55
PATH 2	FC	1.92	3.4	0.8	2.40	4.25
PATH 3	FC	1.99	3.8	0.9	2.21	4.22
PATH 4	FC	1.67	3.3	1.1	1.52	3.00
PATH 5	FC	1.95	3.0	0.9	2.17	3.33
PATH 6	FC	2.21	5.0	0.5	4.42	10.0
PATH 7	FC	2.08	3.7	0.7	2.97	5.29
PROP LINE TRACT 2	FC	0.27	0.9	0.0	N.A.	N.A.
PROP LINE TRACT G	FC	0.06	0.9	0.0	N.A.	N.A.
POOL DECK	FC	4.7	7.8	1.6	N.A.	N.A.

1 SITE PHOTOMETRIC PLAN
SCALE: 1" = 70'-0"

PROJECT NUMBER
65120950

DRAWN BY
TV

DATE
6/3/2025

REVISIONS
1 RFI 21
2 CAR PORTS
3 PHOTOMETRICS



PREPARED FOR CENTURY COMMUNITIES



PROJECT
COMPARK VILLAGE SOUTH

TOWN OF PARKER, COUNTY OF DOUGLAS, COLORADO 80134

SHEET TITLE
SITE PHOTOMETRIC PLAN & SCHEDULES

SHEET NUMBER
51

Specification

ADVANCED HIGH CEILING
SP-018/SP-018s - Smart Illuminating Bollard
Motion Sensor / No Wiring



Quantity
Project
Note
Type

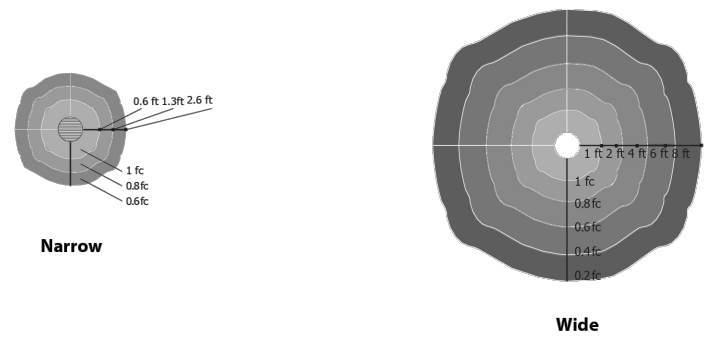
General
Housing: Extruded aluminum
Finish: Black, Grey, Platinum silver
Mounting: Embedded, Surface mounted (please refer to installation guide)
Anchorage: Anchor base with stainless steel anti-theft screws

Operational
Average Sunlight Exposure: 2-3 Hours (sunny) to 5-8 hours (overcast or rainy) to Maintain Function*
Average Operation Time: Minimum 12 hours (extra stored power will carry over to next day)
Solar Deprivation Limit: 5 days*
Switch: Auto photo sensor
On/Off Level: 1.5 / 3 footcandle
Temperature Range: -40° F to 176° F
Distribution: Narrow or Wide
Weight: 44.1 lbs (SP-018) / 33.1 lbs (SP-018s)
*10-minute function, unit requires 2-4 hour (sunny) to 5-8 hour (overcast/rain) of full exposure. Extra charge will be restored for next day use. Fully charged, the unit can last 3-4 rainy days.

Solar LED Specification
Solar Panel: Crystalline silicon
Lifespan of Solar Panel: 20 yrs
LED Brand: Nichia
Available LED colors: White(5700K), Neutral White(4000K), Warm White(3000K), Amber
LED Rated Life: > 60,000 Hours (L70)
Power Storage: Panasonic industrial battery pack (Lifespan: 4-6 years)

Warranty
3 year limited warranty. See www.meteor-lighting.com for details.

Distribution



METEOR LIGHTING P: 213.255.2060 F: 213.596.3704 www.meteor-lighting.com Page 1
*METEOR LIGHTING reserves the right to make changes to this product at any time without prior notice and such modification shall be effective immediately.

SITE LIGHT FIXTURE 'SC'

Specification

ADVANCED HIGH CEILING
SP-018/SP-018s - Smart Illuminating Bollard
Motion Sensor / No Wiring

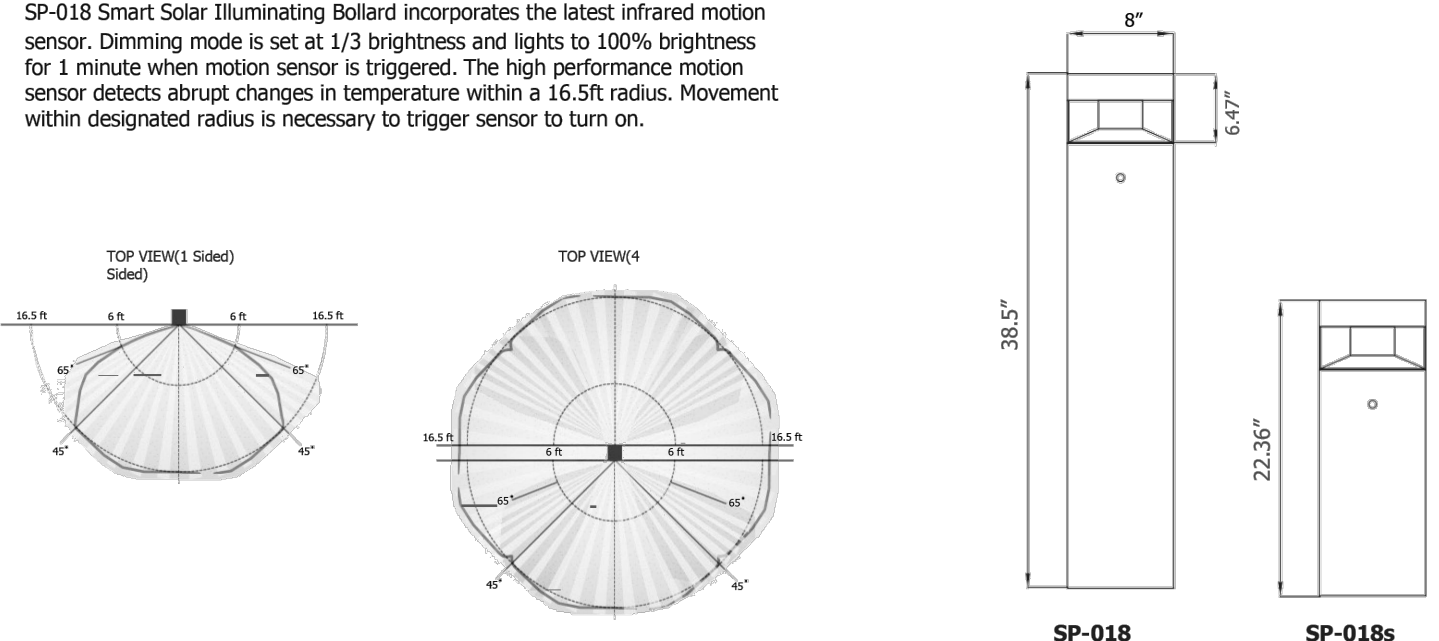


How To Specify
Ordering Example: **SP018-30K-BLK-NR-AKE-1S**

Model	CCT	Finish	Distribution	Anchorage	Optional
SP018	30K (3000K)	BLK (Black)	NR (Narrow)	AKE (Embedded)	1S (1 Sensor)
SP018s	40K (4000K) 57K (5700K) AMB (Amber)	GRY (Gray) PTS (Platinum silver)	WD (Wide)	AKS (Surface Mounted)	4S (4 Sensor)

Motion Sensor Detection type
SP-018 Smart Solar Illuminating Bollard incorporates the latest infrared motion sensor. Dimming mode is set at 1/3 brightness and lights to 100% brightness for 1 minute when motion sensor is triggered. The high performance motion sensor detects abrupt changes in temperature within a 16.5ft radius. Movement within designated radius is necessary to trigger sensor to turn on.

Dimensions



METEOR LIGHTING P: 213.255.2060 F: 213.596.3704 www.meteor-lighting.com Page 2
*METEOR LIGHTING reserves the right to make changes to this product at any time without prior notice and such modification shall be effective immediately.

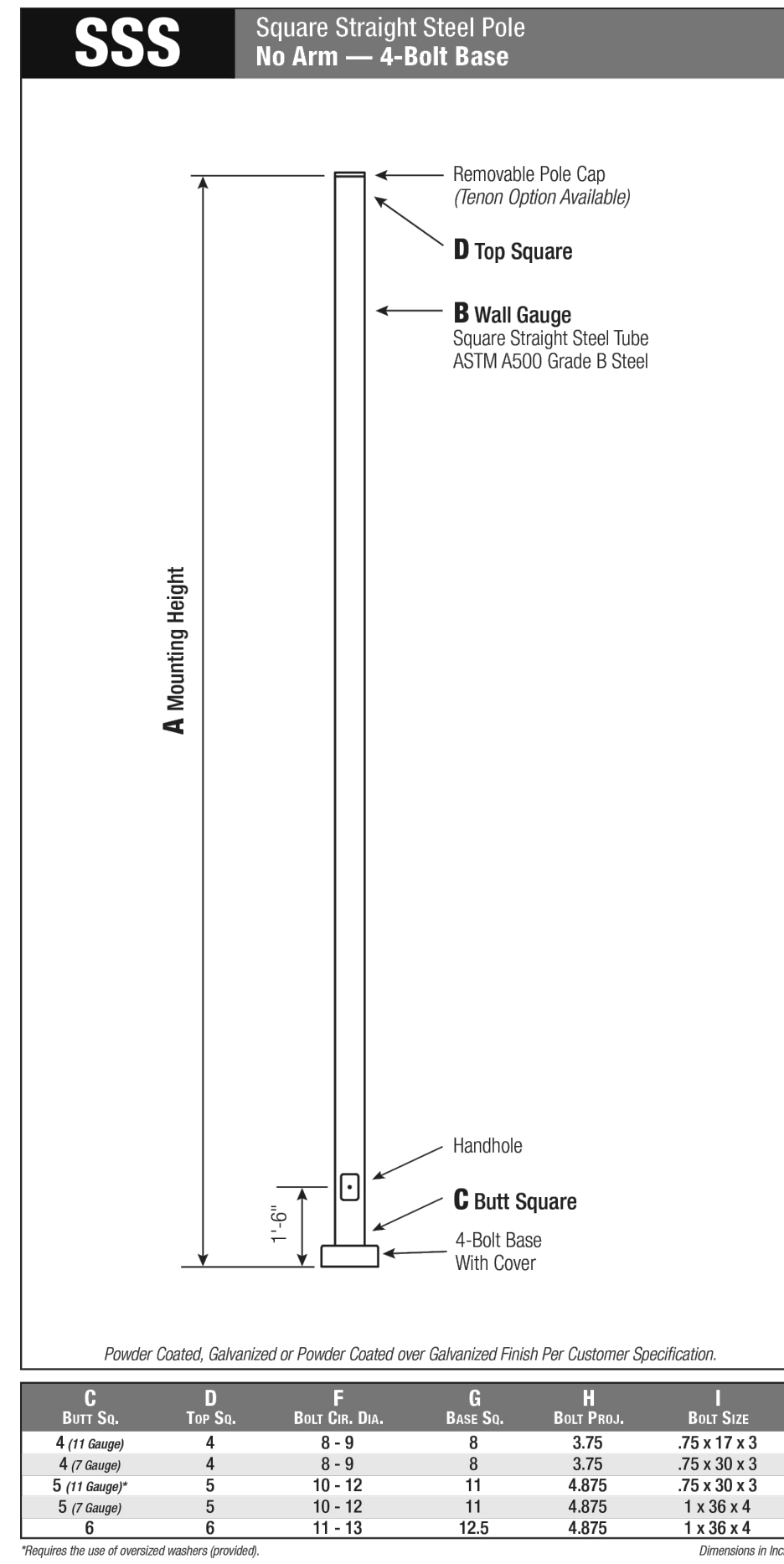
COMPARK VILLAGE SOUTH F1 AMD 2 - MULTIFAMILY SITE PLAN

LOT 1, COMPARK VILLAGE FILING NO. 1, AMEND NO. 2
SOUTH HALF SECTION 6, TOWNSHIP 6 SOUTH, RANGE 66 WEST OF THE 6TH PRINCIPAL MERIDIAN
TOWN OF PARKER, COUNTY OF DOUGLAS, STATE OF COLORADO

SITE LIGHT FIXTURE SCHEDULE

TYPE	SERVES	DESCRIPTION	MANUFACTURER CATALOG NO.	LAMPS	QUANTITY	NOTES
SA1	SITE	POLE MOUNTED FIXTURE	COOPER #PRV-C15-730-T5-SPB2	52	1	20'
SA2	SITE	POLE MOUNTED FIXTURE	COOPER #PRV-C15-730-T3-SPB2	52	24	20'
SA3	SITE	POLE MOUNTED FIXTURE	COOPER #PRV-C15-730-T3-SPB2 (DOUBLE)	52	4	20'
SA4	SITE	POLE MOUNTED FIXTURE	COOPER #PRV-C60-730-T4-SPB2	217	3	20'
SB	SITE	POLE MOUNTED FIXTURE	COOPER #PRV-C10-730-T3-SPB2	34.6	44	10'
SC	SITE	BOLLARD	METEOR #SP018-30K-BLK-WD-4S	0.7	10	10'
SF	SITE	WALL MOUNTED	COOPER #IST-SA1F-730-U-(T4W OR T4FT)-BK-SPB2	66	4	15'
SP	SITE	CARPORT MOUNTED	LEDALUX #CP-8.000-3000K	57	25	-
POLE (SA#, SB)	SITE	POLE	HAPCO #10 OR 20-B-4-(D190 OR D218)-BA	-	76	10' AND 20'

REFER TO SITE PLAN SYMBOLS AND LIGHTING TAGS FOR LIGHT FIXTURE MOUNTING AND NUMBER OF FIXTURES PER POLE



Pole
Pole shaft shall be weather-grade, cold-rolled, commercial quality carbon steel tubing conforming to ASTM A500 Grade B. Options include 11 gauge and 7 gauge. All welds shall conform to AWS D1.1 using E70TS-6 electrodes.

Base Style
4-Bolt Steel Plate Base Flange of fabricated hot rolled carbon steel conforming to ASTM A500 or equivalent (50ksi minimum yield) with 2-piece Base Cover and anchoring hardware.

Anchorage
Anchorage Kit will include four (4) L-shaped Steel Anchor Bolts conforming to AASHTO M14-90 Grade 55. Ten inches (10") of threaded end will be galvanized per ASTM A153. Kits will contain eight (8) Hex Nuts, four (4) Lock Washers, and eight (8) Flat Washers (all components Galvanized Steel). A paper bolt circle template will be provided.

Handhole
Reinforced, 3" x 5" Handhole with cover, stainless steel screw and backlock. A grounding provision incorporating a tapered 1/2" - 1/8" hole will be provided.

Base Cover
Square ABS plastic Base Covers are standard on all SSS poles specified in BA, Black, BM, Black Bronze and BS, White. SSS poles specified in all other colors will be manufactured of metal materials. Custom specification of SSS square metal style Base Covers in BA, BM and BS powder coated finishes is available.

Vibration Damper
If determined necessary by Hapco, or if specified by the customer, a first and/or second mode vibration damper will be provided.

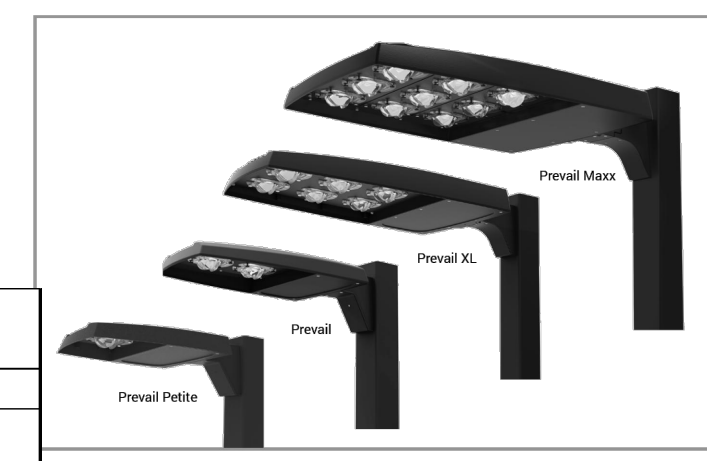
C	D	F	G	H	I
Butt Dia.	Top Dia.	Butt Dia. Dia.	Base Dia.	Butt Dia.	Butt Dia.
4 (1/4 Gauge)	4	8 - 9	8	3.75	.75 x 17 x 3
4 (1/2 Gauge)	4	8 - 9	8	3.75	.75 x 30 x 3
5 (1/4 Gauge)	5	10 - 12	11	4.875	.75 x 30 x 3
5 (1/2 Gauge)	5	10 - 12	11	4.875	1 x 36 x 4
6	6	11 - 13	12.5	4.875	1 x 36 x 4

Requires the use of oversized nut/washer provided.

2 www.hapco.com

WARNING: Do not install light pole without luminaires.

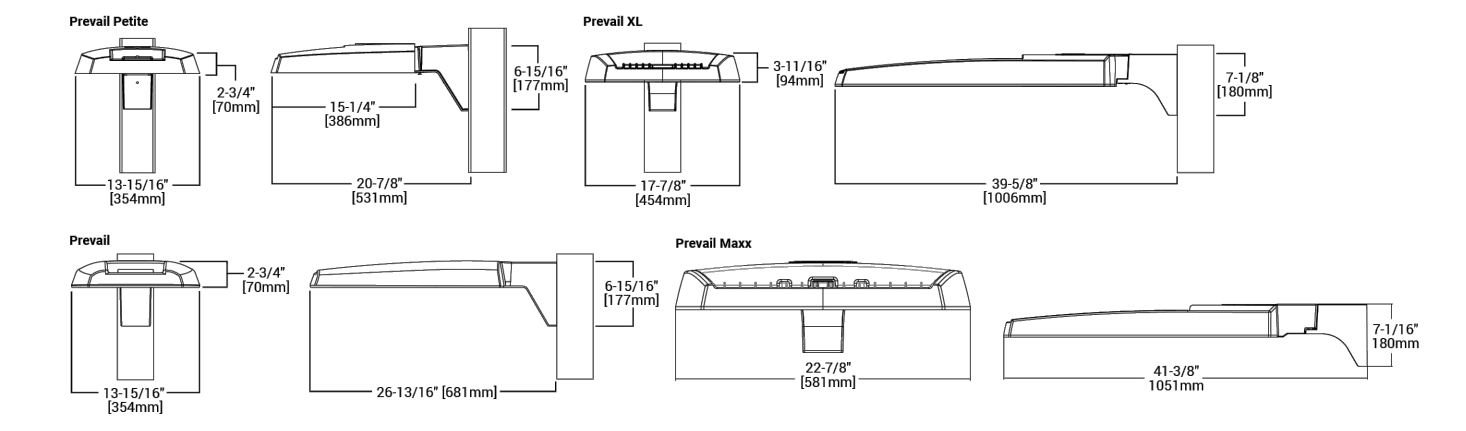
Project	Catalog #	Type
Prepared by	Notes	Date



- Interactive Menu**
- Ordering Information page 2
 - Mounting Details page 3, 4
 - Optical Configurations page 5
 - Product Specifications page 5
 - Energy and Performance Data page 6, 7
 - Control Options page 8

- Quick Facts**
- Lumen packages range from 4,800 - 84,000 lumens (35W - 68W)
 - Replaces 70W up to 1,000W HID equivalents
 - Efficacies up to 160 lumens per watt
 - Energy and maintenance savings up to 85% versus HID solutions
 - Standard universal quick mount arm with universal drill pattern

Dimensional Details



NOTE:
1. Visit www.cooperlighting.com to confirm specification. Not all product variations are UL qualified.
2. UL Certified for 200K CEC and warmer only.



SITE LIGHT FIXTURE 'SA1, SA2, SA3, SA4, & SB'

Lumark Preval LED

Ordering Information
SAMPLE NUMBER: **PRV-XL-C75-D-UNV-T4-SA-BZ**

Product Family	Light Engine	Color Temperature	Driver	Voltage	Distribution	Mounting	Color
PRV-Preval Polo	C15-1 LED 4,800 Nominal Lumens	740-700K, 4000K	D-Dimming (0-10V)	UNV-Universal (120-277V)	T2-Type II	SA-M Standard	92-Yellow
BAA-PRV-Preval Polo BAA Compliant	C25-1 LED 13,100 Nominal Lumens	727-702K, 2700K		UNV-Universal, J41-40V	T2-Type III	Yeastle Arm	AP-Cyan
TAA-PRV-Preval Polo TAA Compliant	C25-1 LED 8,900 Nominal Lumens	730-702K, 3000K		8-24V, 0-10V	T4-Type IV	MA-Max Arm	BK-Black
PRV-Preval	C15-1 LED 7,100 Nominal Lumens	730-702K, 3000K		0V-Quartz (277-480V) **	T4-Type V	MA-Max Arm	DP-Dark Platinum
BAA-PRV-Preval BAA Compliant	C25-1 LED 13,100 Nominal Lumens	650-650K, 4000K				MA-Max Arm	DP-Dark Platinum
TAA-PRV-Preval TAA Compliant	C40-1 LED 20,000 Nominal Lumens					MA-Max Arm	DP-Dark Platinum
PRV-XL-Preval XL	C75-1 LED 31,500 Nominal Lumens					MA-Max Arm	DP-Dark Platinum
BAA-PRV-XL-Preval BAA Compliant	C75-1 LED 31,500 Nominal Lumens					MA-Max Arm	DP-Dark Platinum
TAA-PRV-XL-Preval TAA Compliant	C75-1 LED 41,100 Nominal Lumens					MA-Max Arm	DP-Dark Platinum
PRV-M-Preval Max	C200-1 LED 48,000 Nominal Lumens					MA-Max Arm	DP-Dark Platinum
BAA-PRV-M-Preval Max BAA Compliant	C225-1 LED 54,000 Nominal Lumens					MA-Max Arm	DP-Dark Platinum
TAA-PRV-M-Preval Max TAA Compliant	C275-1 LED 72,000 Nominal Lumens					MA-Max Arm	DP-Dark Platinum

Options (Add as Suffix)

Option	Description
7050-70	CR / 3000K CCT
7050-70-01	3000K CCT
CC	Coastal Construction Finish **
CS	Coastal Construction Finish **
HS	House Side Shield *
LS	Light Side Shield *
LSG	Light Side Shield *
MS	Motor Mount *
MS-1	Motor Mount *
MS-2	Motor Mount *
MS-3	Motor Mount *
MS-4	Motor Mount *
MS-5	Motor Mount *
MS-6	Motor Mount *
MS-7	Motor Mount *
MS-8	Motor Mount *
MS-9	Motor Mount *
MS-10	Motor Mount *
MS-11	Motor Mount *
MS-12	Motor Mount *
MS-13	Motor Mount *
MS-14	Motor Mount *
MS-15	Motor Mount *
MS-16	Motor Mount *
MS-17	Motor Mount *
MS-18	Motor Mount *
MS-19	Motor Mount *
MS-20	Motor Mount *
MS-21	Motor Mount *
MS-22	Motor Mount *
MS-23	Motor Mount *
MS-24	Motor Mount *
MS-25	Motor Mount *
MS-26	Motor Mount *
MS-27	Motor Mount *
MS-28	Motor Mount *
MS-29	Motor Mount *
MS-30	Motor Mount *
MS-31	Motor Mount *
MS-32	Motor Mount *
MS-33	Motor Mount *
MS-34	Motor Mount *
MS-35	Motor Mount *
MS-36	Motor Mount *
MS-37	Motor Mount *
MS-38	Motor Mount *
MS-39	Motor Mount *
MS-40	Motor Mount *
MS-41	Motor Mount *
MS-42	Motor Mount *
MS-43	Motor Mount *
MS-44	Motor Mount *
MS-45	Motor Mount *
MS-46	Motor Mount *
MS-47	Motor Mount *
MS-48	Motor Mount *
MS-49	Motor Mount *
MS-50	Motor Mount *
MS-51	Motor Mount *
MS-52	Motor Mount *
MS-53	Motor Mount *
MS-54	Motor Mount *
MS-55	Motor Mount *
MS-56	Motor Mount *
MS-57	Motor Mount *
MS-58	Motor Mount *
MS-59	Motor Mount *
MS-60	Motor Mount *
MS-61	Motor Mount *
MS-62	Motor Mount *
MS-63	Motor Mount *
MS-64	Motor Mount *
MS-65	Motor Mount *
MS-66	Motor Mount *
MS-67	Motor Mount *
MS-68	Motor Mount *
MS-69	Motor Mount *
MS-70	Motor Mount *
MS-71	Motor Mount *
MS-72	Motor Mount *
MS-73	Motor Mount *
MS-74	Motor Mount *
MS-75	Motor Mount *
MS-76	Motor Mount *
MS-77	Motor Mount *
MS-78	Motor Mount *
MS-79	Motor Mount *
MS-80	Motor Mount *
MS-81	Motor Mount *
MS-82	Motor Mount *
MS-83	Motor Mount *
MS-84	Motor Mount *
MS-85	Motor Mount *
MS-86	Motor Mount *
MS-87	Motor Mount *
MS-88	Motor Mount *
MS-89	Motor Mount *
MS-90	Motor Mount *
MS-91	Motor Mount *
MS-92	Motor Mount *
MS-93	Motor Mount *
MS-94	Motor Mount *
MS-95	Motor Mount *
MS-96	Motor Mount *
MS-97	Motor Mount *
MS-98	Motor Mount *
MS-99	Motor Mount *
MS-100	Motor Mount *

Accessories (Order Separately **)

Accessory	Description
MA197-XX	Single Tension Adapter for 3-1/2" O.D. Tension
MA198-XX	Double Tension Adapter for 3-1/2" O.D. Tension
MA199-XX	Triple Tension Adapter for 3-1/2" O.D. Tension
MA200-XX	Quadruple Tension Adapter for 3-1/2" O.D. Tension
MA201-XX	Quintuple Tension Adapter for 3-1/2" O.D. Tension
MA202-XX	Sextuple Tension Adapter for 3-1/2" O.D. Tension
MA203-XX	Septuple Tension Adapter for 3-1/2" O.D. Tension
MA204-XX	Octuple Tension Adapter for 3-1/2" O.D. Tension
MA205-XX	Nonuple Tension Adapter for 3-1/2" O.D. Tension
MA206-XX	Tenuple Tension Adapter for 3-1/2" O.D. Tension
MA207-XX	Elevenuple Tension Adapter for 3-1/2" O.D. Tension
MA208-XX	Twelveuple Tension Adapter for 3-1/2" O.D. Tension
MA209-XX	Thirteenuple Tension Adapter for 3-1/2" O.D. Tension
MA210-XX	Fourteenuple Tension Adapter for 3-1/2" O.D. Tension
MA211-XX	Fifteenuple Tension Adapter for 3-1/2" O.D. Tension
MA212-XX	Sixteenuple Tension Adapter for 3-1/2" O.D. Tension
MA213-XX	Seventenuple Tension Adapter for 3-1/2" O.D. Tension
MA214-XX	Eighteenuple Tension Adapter for 3-1/2" O.D. Tension
MA215-XX	Nineteenuple Tension Adapter for 3-1/2" O.D. Tension
MA216-XX	Twentynuple Tension Adapter for 3-1/2" O.D. Tension
MA217-XX	Twentyoneuple Tension Adapter for 3-1/2" O.D. Tension
MA218-XX	Twentytwouple Tension Adapter for 3-1/2" O.D. Tension
MA219-XX	Twentythreeuple Tension Adapter for 3-1/2" O.D. Tension
MA220-XX	Twentyfouruple Tension Adapter for 3-1/2" O.D. Tension
MA221-XX	Twentyfiveuple Tension Adapter for 3-1/2" O.D. Tension
MA222-XX	Twentysixuple Tension Adapter for 3-1/2" O.D. Tension
MA223-XX	Twentysevenuple Tension Adapter for 3-1/2" O.D. Tension
MA224-XX	Twentyeightuple Tension Adapter for 3-1/2" O.D. Tension
MA225-XX	Twentynuple Tension Adapter for 3-1/2" O.D. Tension
MA226-XX	Thirtynuple Tension Adapter for 3-1/2" O.D. Tension
MA227-XX	Thirtynoneuple Tension Adapter for 3-1/2" O.D. Tension
MA228-XX	Fortynuple Tension Adapter for 3-1/2" O.D. Tension
MA229-XX	Fortynineuple Tension Adapter for 3-1/2" O.D. Tension
MA230-XX	Fiftynuple Tension Adapter for 3-1/2" O.D. Tension
MA231-XX	Fiftyoneuple Tension Adapter for 3-1/2" O.D. Tension
MA232-XX	Fiftytwouple Tension Adapter for 3-1/2" O.D. Tension
MA233-XX	Fiftythreeuple Tension Adapter for 3-1/2" O.D. Tension
MA234-XX	Fiftyfouruple Tension Adapter for 3-1/2" O.D. Tension
MA235-XX	Fiftyfiveuple Tension Adapter for 3-1/2" O.D. Tension
MA236-XX	Fiftysexuple Tension Adapter for 3-1/2" O.D. Tension
MA237-XX	Fiftysevenuple Tension Adapter for 3-1/2" O.D. Tension
MA238-XX	Fiftyeightuple Tension Adapter for 3-1/2" O.D. Tension
MA239-XX	Fiftynineuple Tension Adapter for 3-1/2" O.D. Tension
MA240-XX	Sixtynuple Tension Adapter for 3-1/2" O.D. Tension
MA241-XX	Sixtyoneuple Tension Adapter for 3-1/2" O.D. Tension
MA242-XX	Sixtytwouple Tension Adapter for 3-1/2" O.D. Tension
MA243-XX	Sixtythreeuple Tension Adapter for 3-1/2" O.D. Tension
MA244-XX	Sixtyfouruple Tension Adapter for 3-1/2" O.D. Tension
MA245-XX	Sixtyfiveuple Tension Adapter for 3-1/2" O.D. Tension
MA246-XX	Sixtysixuple Tension Adapter for 3-1/2" O.D. Tension
MA247-XX	Sixtysevenuple Tension Adapter for 3-1/2" O.D. Tension
MA248-XX	Sixtyeightuple Tension Adapter for 3-1/2" O.D. Tension
MA249-XX	Sixtynineuple Tension Adapter for 3-1/2" O.D. Tension
MA250-XX	Seventynuple Tension Adapter for 3-1/2" O.D. Tension
MA251-XX	Seventyoneuple Tension Adapter for 3-1/2" O.D. Tension
MA252-XX	Seventytwouple Tension Adapter for 3-1/2" O.D. Tension
MA253-XX	Seventythreeuple Tension Adapter for 3-1/2" O.D. Tension
MA254-XX	Seventyfouruple Tension Adapter for 3-1/2" O.D. Tension
MA255-XX	Seventyfiveuple Tension Adapter for 3-1/2" O.D. Tension
MA256-XX	Seventysixuple Tension Adapter for 3-1/2" O.D. Tension
MA257-XX	Seventysevenuple Tension Adapter for 3-1/2" O.D. Tension
MA258-XX	Seventyeightuple Tension Adapter for 3-1/2" O.D. Tension
MA259-XX	Seventynineuple Tension Adapter for 3-1/2" O.D. Tension
MA260-XX	Eightynuple Tension Adapter for 3-1/2" O.D. Tension
MA261-XX	Eightyoneuple Tension Adapter for 3-1/2" O.D. Tension
MA262-XX	Eightytwouple Tension Adapter for 3-1/2" O.D. Tension
MA263-XX	Eightythreeuple Tension Adapter for 3-1/2" O.D. Tension
MA264-XX	Eightyfouruple Tension Adapter for 3-1/2" O.D. Tension
MA265-XX	Eightyfiveuple Tension Adapter for 3-1/2" O.D. Tension
MA266-XX	Eightysixuple Tension Adapter for 3-1/2" O.D. Tension
MA267-XX	Eightysevenuple Tension Adapter for 3-1/2" O.D. Tension
MA268-XX	Eightyeightuple Tension Adapter for 3-1/2" O.D. Tension</

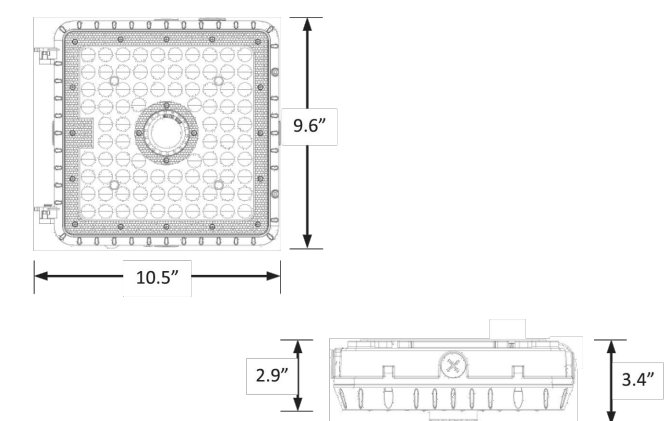
LEDALUX CP-LKFS Lumen and Kelvin Field Selectable Canopy

L70 44,000 Hours



CATALOG NUMBER: _____
 NOTES: _____
 FIXTURE TYPE: _____
 PROJECT: _____

DIMENSIONS



Weight: 5 lbs.

WARRANTY

- dLUs listed for wet locations in ambient temperatures from -40°C to 40°C (40°F to 104°F).
- IP65 rated for ingress protection.
- Lens is IK08 rated for impact.
- DLC premium approved for Fuel Pump and Parking Garage categories.
- Complies with FCC Part 15, class B.
- Complies with IEC/EN61000-4-5, input transient surge immunity protection (4kV).
- 5-year warranty on all electronics and housing.

ORDERING INFORMATION

Series	Nominal Lumen Output (Selectable)	Kelvin Selectable	Occupancy Sensor	Housing Color	Accessories (Order Separately)
CP	10L = 10,000/8,000/7,000	LKFS = 3000K/4000K/5000K	ODS ^{1,2} = Microwave occupancy, dimming, & daylight sensor (factory installed) Blank = No sensor	BRZ = Bronze WHI = White	MWAVEDHS-REM = Sensor remote control

¹Remote control Required for programming (sold separately).
²Default sensor settings: detection area = 100%, hold time = 20 minutes, stand-by period = 0 seconds, stand-by dimming level = 10%, daylight threshold = disabled
³Maximum mounting height = 49 feet.

LEDALUX - a division of Mule Lighting, Inc. • 46 Baker Street Providence, RI 02905 • 800 556-7690 P 401 941-2929 F • www.LEDALUX.com

SITE LIGHT FIXTURE 'SP'

LEDALUX CP-LKFS Lumen and Kelvin Field Selectable Canopy

L70 44,000 Hours

ELECTRICAL DATA

Series	Measurements	Low Lumens			Mid Lumens			High Lumens		
		3000K	4000K	5000K	3000K	4000K	5000K	3000K	4000K	5000K
CP-10L-LKFS	Lumens	6821	6962	7228	7800	8248	8312	9297	10,506	9967
	Watts	48	43	47	57	51	57	73	69	73
	Efficacy	143	163	152	137	161	147	127	152	136
	Input Current (A)	120V = 0.40A 240V = 0.20A	120V = 0.36A 240V = 0.18A	120V = 0.39A 240V = 0.20A	120V = 0.48A 240V = 0.24A	120V = 0.43A 240V = 0.21A	120V = 0.48A 240V = 0.24A	120V = 0.61A 240V = 0.30A	120V = 0.58A 240V = 0.28A	120V = 0.61A 240V = 0.30A
		277V = 0.17A	277V = 0.16A	277V = 0.17A	277V = 0.21A	277V = 0.18A	277V = 0.21A	277V = 0.26A	277V = 0.25A	277V = 0.26A

PHOTOMETRIC DATA

CP-10L-LKFS Luminaire Data

Description	Canopy 10L5K-LKFS
Total Lumens	9,993
Input Wattage	73
Efficacy (lm/W)	137
Spacing Criterion (0-180°)	1.14
Spacing Criterion (90-270°)	1.04

Zonal Lumen Summary

Zone	Lumens	%Flxt
0-20°	1,245	12.5%
0-30°	2,530	25.3%
0-40°	3,946	39.5%
20-50°	4,143	41.5%
40-70°	4,839	48.4%
0-60°	6,942	69.5%
0-80°	9,872	98.8%
0-90°	9,993	100.0%
90-180°	0	0.0%
0-180°	9,993	100.0%

**COMPARK VILLAGE SOUTH
 F1 AMD 2 - MULTIFAMILY
 SITE PLAN**

LOT 1, COMPARK VILLAGE FILING NO. 1, AMEND NO. 2
 SOUTH HALF SECTION 6, TOWNSHIP 6 SOUTH, RANGE 66 WEST OF THE 6TH PRINCIPAL MERIDIAN
 TOWN OF PARKER, COUNTY OF DOUGLAS, STATE OF COLORADO

McGraw-Edison Impact Elite LED

Ordering Information
 SAMPLE NUMBER: **ISC-SA1F-740-U-T3-BZ**

Product Family	Light Engine Configuration	Drive Current	Color Temperature	Voltage	Distribution	Finish
ISC-Elite LED Small Cylinder	SA1-F Square	A-130mA B-400mA C-400mA E-100mA F-120mA ¹	722-700K, 2200K 727-700K, 2700K 728-700K, 3000K 729-700K, 3000K 730-700K, 3000K 830-800K, 3000K AMB-Ambler, 5000K ¹	0-120/277V 0-120V 2-120V 4-277V 0-480V ¹ 0-247V ¹	T2-Type II T3-Type III T4-Type IV Forward Throw T4W-Type IV Wide SL2-Type II w/Spill Control SL3-Type III w/Spill Control SL4-Type IV w/Spill Control SL5-90° Spill Light Eliminator Left SL6-90° Spill Light Eliminator Right RW-Rectangular Wide Type I	AP-Grey BK-Black BP-Dark Platinum DM-Diaphane Metallic WH-White

Options (Add as Suffix)

MA-55°C High Ambient
 AMB-After Hours Dim, 5 Hours, 50%
 AMB24-After Hours Dim, 6 Hours, 50%
 AMB36-After Hours Dim, 7 Hours, 50%
 AMB48-After Hours Dim, 8 Hours, 50%
 CPB-Battery Pack with Back Box, Cold Weather Rated
 CPB-CDC-Battery Pack with Back Box, Cold Weather Rated, CDC Compliance¹
 LCP-Light Square Trim Plate Painted to Match Housing
 HES-Factory Installed House Side Shield²
 C-Character Construction³
 TR-Tamper Resistant Hardware
 20K-Series 20kV 1440 Surge Protective Device

Controls and Systems Options (Add as Suffix)

SPC-Button Type Photocell (120, 208, 240 or 277V, Must Specify Voltage)
 PFC-PFC/ALU, PFC/ALU, Wireless Photocell Receptor⁴
 SPD-Dimming Occupancy Sensor with Bluetooth Interface, 4" Mounting
 SP2-Dimming Occupancy Sensor with Bluetooth Interface, 2" Mounting
 SP3-Dimming Occupancy Sensor with Bluetooth Interface, 2" Mounting
 MDM-MX-Motion Sensor for Dimming Operation
 LWR-LWR-Long-Range Wireless Sensor, Wall Lens for 10-40' Mounting Height
 LWR-LWR-Long-Range Wireless Sensor, Narrow Lens for 10-40' Mounting Height
 ZW-Wireless Enabled Module and 4-PIN Receptor⁵
 ZW-Wireless Enabled Module and Wireless Sensor - 7'5" Mounting
 ZW-Wireless Enabled Module and Wireless Sensor - 15' Mounting
 ZW-Wireless Enabled Module and Wireless Sensor - 15' Mounting
 ZW-Wireless Enabled Module and Wireless Sensor - 15' Mounting
 ZW-Wireless Enabled Module and Wireless Sensor - 15' Mounting
 ZW-Wireless Enabled Module and Wireless Sensor - 15' Mounting

Accessories (Order Separately)

MA1253-10W Circuit Module Replacement
 MA1254-24W Circuit Module Replacement
 MA1255-36W Circuit Module Replacement
 MA1256-48W Circuit Module Replacement
 MA1257-60W Circuit Module Replacement
 MA1258-72W Circuit Module Replacement
 MA1259-84W Circuit Module Replacement
 MA1260-96W Circuit Module Replacement
 MA1261-108W Circuit Module Replacement
 MA1262-120W Circuit Module Replacement
 MA1263-132W Circuit Module Replacement
 MA1264-144W Circuit Module Replacement
 MA1265-156W Circuit Module Replacement
 MA1266-168W Circuit Module Replacement
 MA1267-180W Circuit Module Replacement
 MA1268-192W Circuit Module Replacement
 MA1269-204W Circuit Module Replacement
 MA1270-216W Circuit Module Replacement
 MA1271-228W Circuit Module Replacement
 MA1272-240W Circuit Module Replacement
 MA1273-252W Circuit Module Replacement
 MA1274-264W Circuit Module Replacement
 MA1275-276W Circuit Module Replacement
 MA1276-288W Circuit Module Replacement
 MA1277-300W Circuit Module Replacement
 MA1278-312W Circuit Module Replacement
 MA1279-324W Circuit Module Replacement
 MA1280-336W Circuit Module Replacement
 MA1281-348W Circuit Module Replacement
 MA1282-360W Circuit Module Replacement
 MA1283-372W Circuit Module Replacement
 MA1284-384W Circuit Module Replacement
 MA1285-396W Circuit Module Replacement
 MA1286-408W Circuit Module Replacement
 MA1287-420W Circuit Module Replacement
 MA1288-432W Circuit Module Replacement
 MA1289-444W Circuit Module Replacement
 MA1290-456W Circuit Module Replacement
 MA1291-468W Circuit Module Replacement
 MA1292-480W Circuit Module Replacement
 MA1293-492W Circuit Module Replacement
 MA1294-504W Circuit Module Replacement
 MA1295-516W Circuit Module Replacement
 MA1296-528W Circuit Module Replacement
 MA1297-540W Circuit Module Replacement
 MA1298-552W Circuit Module Replacement
 MA1299-564W Circuit Module Replacement
 MA1300-576W Circuit Module Replacement
 MA1301-588W Circuit Module Replacement
 MA1302-600W Circuit Module Replacement
 MA1303-612W Circuit Module Replacement
 MA1304-624W Circuit Module Replacement
 MA1305-636W Circuit Module Replacement
 MA1306-648W Circuit Module Replacement
 MA1307-660W Circuit Module Replacement
 MA1308-672W Circuit Module Replacement
 MA1309-684W Circuit Module Replacement
 MA1310-696W Circuit Module Replacement
 MA1311-708W Circuit Module Replacement
 MA1312-720W Circuit Module Replacement
 MA1313-732W Circuit Module Replacement
 MA1314-744W Circuit Module Replacement
 MA1315-756W Circuit Module Replacement
 MA1316-768W Circuit Module Replacement
 MA1317-780W Circuit Module Replacement
 MA1318-792W Circuit Module Replacement
 MA1319-804W Circuit Module Replacement
 MA1320-816W Circuit Module Replacement
 MA1321-828W Circuit Module Replacement
 MA1322-840W Circuit Module Replacement
 MA1323-852W Circuit Module Replacement
 MA1324-864W Circuit Module Replacement
 MA1325-876W Circuit Module Replacement
 MA1326-888W Circuit Module Replacement
 MA1327-900W Circuit Module Replacement
 MA1328-912W Circuit Module Replacement
 MA1329-924W Circuit Module Replacement
 MA1330-936W Circuit Module Replacement
 MA1331-948W Circuit Module Replacement
 MA1332-960W Circuit Module Replacement
 MA1333-972W Circuit Module Replacement
 MA1334-984W Circuit Module Replacement
 MA1335-996W Circuit Module Replacement
 MA1336-1008W Circuit Module Replacement
 MA1337-1020W Circuit Module Replacement
 MA1338-1032W Circuit Module Replacement
 MA1339-1044W Circuit Module Replacement
 MA1340-1056W Circuit Module Replacement
 MA1341-1068W Circuit Module Replacement
 MA1342-1080W Circuit Module Replacement
 MA1343-1092W Circuit Module Replacement
 MA1344-1104W Circuit Module Replacement
 MA1345-1116W Circuit Module Replacement
 MA1346-1128W Circuit Module Replacement
 MA1347-1140W Circuit Module Replacement
 MA1348-1152W Circuit Module Replacement
 MA1349-1164W Circuit Module Replacement
 MA1350-1176W Circuit Module Replacement
 MA1351-1188W Circuit Module Replacement
 MA1352-1200W Circuit Module Replacement
 MA1353-1212W Circuit Module Replacement
 MA1354-1224W Circuit Module Replacement
 MA1355-1236W Circuit Module Replacement
 MA1356-1248W Circuit Module Replacement
 MA1357-1260W Circuit Module Replacement
 MA1358-1272W Circuit Module Replacement
 MA1359-1284W Circuit Module Replacement
 MA1360-1296W Circuit Module Replacement
 MA1361-1308W Circuit Module Replacement
 MA1362-1320W Circuit Module Replacement
 MA1363-1332W Circuit Module Replacement
 MA1364-1344W Circuit Module Replacement
 MA1365-1356W Circuit Module Replacement
 MA1366-1368W Circuit Module Replacement
 MA1367-1380W Circuit Module Replacement
 MA1368-1392W Circuit Module Replacement
 MA1369-1404W Circuit Module Replacement
 MA1370-1416W Circuit Module Replacement
 MA1371-1428W Circuit Module Replacement
 MA1372-1440W Circuit Module Replacement
 MA1373-1452W Circuit Module Replacement
 MA1374-1464W Circuit Module Replacement
 MA1375-1476W Circuit Module Replacement
 MA1376-1488W Circuit Module Replacement
 MA1377-1500W Circuit Module Replacement
 MA1378-1512W Circuit Module Replacement
 MA1379-1524W Circuit Module Replacement
 MA1380-1536W Circuit Module Replacement
 MA1381-1548W Circuit Module Replacement
 MA1382-1560W Circuit Module Replacement
 MA1383-1572W Circuit Module Replacement
 MA1384-1584W Circuit Module Replacement
 MA1385-1596W Circuit Module Replacement
 MA1386-1608W Circuit Module Replacement
 MA1387-1620W Circuit Module Replacement
 MA1388-1632W Circuit Module Replacement
 MA1389-1644W Circuit Module Replacement
 MA1390-1656W Circuit Module Replacement
 MA1391-1668W Circuit Module Replacement
 MA1392-1680W Circuit Module Replacement
 MA1393-1692W Circuit Module Replacement
 MA1394-1704W Circuit Module Replacement
 MA1395-1716W Circuit Module Replacement
 MA1396-1728W Circuit Module Replacement
 MA1397-1740W Circuit Module Replacement
 MA1398-1752W Circuit Module Replacement
 MA1399-1764W Circuit Module Replacement
 MA1400-1776W Circuit Module Replacement
 MA1401-1788W Circuit Module Replacement
 MA1402-1800W Circuit Module Replacement
 MA1403-1812W Circuit Module Replacement
 MA1404-1824W Circuit Module Replacement
 MA1405-1836W Circuit Module Replacement
 MA1406-1848W Circuit Module Replacement
 MA1407-1860W Circuit Module Replacement
 MA1408-1872W Circuit Module Replacement
 MA1409-1884W Circuit Module Replacement
 MA1410-1896W Circuit Module Replacement
 MA1411-1908W Circuit Module Replacement
 MA1412-1920W Circuit Module Replacement
 MA1413-1932W Circuit Module Replacement
 MA1414-1944W Circuit Module Replacement
 MA1415-1956W Circuit Module Replacement
 MA1416-1968W Circuit Module Replacement
 MA1417-1980W Circuit Module Replacement
 MA1418-1992W Circuit Module Replacement
 MA1419-2004W Circuit Module Replacement
 MA1420-2016W Circuit Module Replacement
 MA1421-2028W Circuit Module Replacement
 MA1422-2040W Circuit Module Replacement
 MA1423-2052W Circuit Module Replacement
 MA1424-2064W Circuit Module Replacement
 MA1425-2076W Circuit Module Replacement
 MA1426-2088W Circuit Module Replacement
 MA1427-2100W Circuit Module Replacement
 MA1428-2112W Circuit Module Replacement
 MA1429-2124W Circuit Module Replacement
 MA1430-2136W Circuit Module Replacement
 MA1431-2148W Circuit Module Replacement
 MA1432-2160W Circuit Module Replacement
 MA1433-2172W Circuit Module Replacement
 MA1434-2184W Circuit Module Replacement
 MA1435-2196W Circuit Module Replacement
 MA1436-2208W Circuit Module Replacement
 MA1437-2220W Circuit Module Replacement
 MA1438-2232W Circuit Module Replacement
 MA1439-2244W Circuit Module Replacement
 MA1440-2256W Circuit Module Replacement
 MA1441-2268W Circuit Module Replacement
 MA1442-2280W Circuit Module Replacement
 MA1443-2292W Circuit Module Replacement
 MA1444-2304W Circuit Module Replacement
 MA1445-2316W Circuit Module Replacement
 MA1446-2328W Circuit Module Replacement
 MA1447-2340W Circuit Module Replacement
 MA1448-2352W Circuit Module Replacement
 MA1449-2364W Circuit Module Replacement
 MA1450-2376W Circuit Module Replacement
 MA1451-2388W Circuit Module Replacement
 MA1452-2400W Circuit Module Replacement
 MA1453-2412W Circuit Module Replacement
 MA1454-2424W Circuit Module Replacement
 MA1455-2436W Circuit Module Replacement
 MA1456-2448W Circuit Module Replacement
 MA1457-2460W Circuit Module Replacement
 MA1458-2472W Circuit Module Replacement
 MA1459-2484W Circuit Module Replacement
 MA1460-2496W Circuit Module Replacement
 MA1461-2508W Circuit Module Replacement
 MA1462-2520W Circuit Module Replacement
 MA1463-2532W Circuit Module Replacement
 MA1464-2544W Circuit Module Replacement
 MA1465-2556W Circuit Module Replacement
 MA1466-2568W Circuit Module Replacement
 MA1467-2580W Circuit Module Replacement
 MA1468-2592W Circuit Module Replacement
 MA1469-2604W Circuit Module Replacement
 MA1470-2616W Circuit Module Replacement
 MA1471-2628W Circuit Module Replacement
 MA1472-2640W Circuit Module Replacement
 MA1473-2652W Circuit Module Replacement
 MA1474-2664W Circuit Module Replacement
 MA1475-2676W Circuit Module Replacement
 MA1476-2688W Circuit Module Replacement
 MA1477-2700W Circuit Module Replacement
 MA1478-2712W Circuit Module Replacement
 MA1479-2724W Circuit Module Replacement
 MA1480-2736W Circuit Module Replacement
 MA1481-2748W Circuit Module Replacement
 MA1482-2760W Circuit Module Replacement
 MA1483-2772W Circuit Module Replacement
 MA1484-2784W Circuit Module Replacement
 MA1485-2796W Circuit Module Replacement
 MA1486-2808W Circuit Module Replacement
 MA1487-2820W Circuit Module Replacement
 MA1488-2832W Circuit Module Replacement
 MA1489-2844W Circuit Module Replacement
 MA1490-2856W Circuit Module Replacement
 MA1491-2868W Circuit Module Replacement
 MA1492-2880W Circuit Module Replacement
 MA1493-2892W Circuit Module Replacement
 MA1494-2904W Circuit Module Replacement
 MA1495-2916W Circuit Module Replacement
 MA1496-2928W Circuit Module Replacement
 MA1497-2940W Circuit Module Replacement
 MA1498-2952W Circuit Module Replacement
 MA1499-2964W Circuit Module Replacement
 MA1500-2976W Circuit Module Replacement
 MA1501-2988W Circuit Module Replacement
 MA1502-3000W Circuit Module Replacement

Thruway Back Box

Product Specifications

Construction

- Heavy wall, die-cast aluminum housing and removable hinged door frame
- Optional tamper-resistant fasteners offer vandal resistant access

Optics

- High efficiency injection-molded AccuLED optics technology
- 10 optical distributions
- DA Certified (3000K CCT and warmer only)

Electrical

- Standard with 0-10V dimming
- Standard with Cooper Lighting Solutions proprietary circuit module designed to withstand 10kV of transient line surge

Finish

- Super durable TGIC polyester powder coat paint, 2.5 mil nominal thickness
- RAL and custom color matches available
- Coastal Construction (CC) option available

Warranty

- Five year limited warranty, consult website for details, www.cooperlighting.com/legal

Mounting

- Utilizes "Hook-N-Lock" mounting mechanism, securing to a gasketed and zinc plated mounting attachment
- Two black oxide coated Allen set screws concealed but accessible from below

COOPER Lighting Solutions

PS500046EN page 2 April 12, 2021 1:28 PM

Project	Catalog #	Type

Prepared by	Notes	Date



McGraw-Edison Impact Elite LED

Wall Mount Luminaire

Interactive Menu

- Ordering Information page 2
- Product Specifications page 2
- Energy and Performance Data page 3
- Control Options page 4

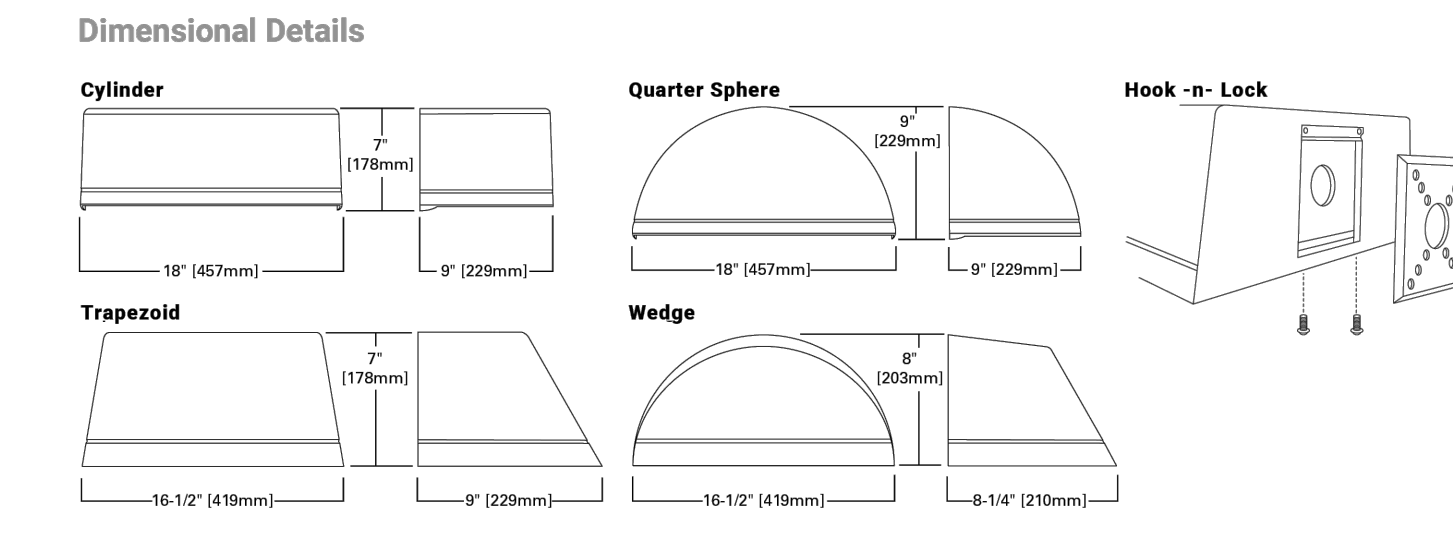
Product Certifications

Quick Facts

- 10 Optical Distributions
- Lumen packages range from 2,459 to 8,123 (20W - 66W)
- Efficacy up to 143 lumens per watt

Connected Systems

- WaveLinx
- Enlighted



COOPER Lighting Solutions

PS500046EN page 1 April 12, 2021 1:28 PM

SITE LIGHT FIXTURE 'SF'

SITE LIGHT FIXTURE SCHEDULE

TYPE	SERVES	DESCRIPTION	MANUFACTURER CATALOG NO.	LAMPS	QUANTITY	NOTES
SA1	SITE	POLE MOUNTED FIXTURE	COOPER #PRV-C15-730-T5-SPB2	52	1	20'
SA2	SITE	POLE MOUNTED FIXTURE	COOPER #PRV-C15-730-T3-SPB2	52	24	20'
SA3	SITE	POLE MOUNTED FIXTURE	COOPER #PRV-C15-730-T3-SPB2 (DOUBLE)	52	4	20'
SA4	SITE	POLE MOUNTED FIXTURE	COOPER #PRV-C80-730-T4-SPB2	217	3	20'
SB	SITE	POLE MOUNTED FIXTURE	COOPER #PRV-C10-730-T3-SPB2	34.6	44	10'
SC	SITE	BOLLARD	METEOR #SP018-30K-BLK-WD-4S	0.7	10	10'
SF	SITE	WALL MOUNTED	COOPER #ST-SA1F-730-U-(T4W OR T4FT)-BK-SPB2	66	4	15'
SP	SITE	CARPORT MOUNTED	LEDALUX #CP-8,000-3000K	57	25	-
POLE (SA# SB)	SITE	POLE	HAPCO # (10 OR 20)-B-4-(D190 OR D218)-BA	-	76	10' AND 20'

REFER TO SITE PLAN SYMBOLS AND LIGHTING TAGS FOR LIGHT FIXTURE MOUNTING AND NUMBER OF FIXTURES PER POLE

PROJECT NUMBER
65120950

DRAWN BY
TV

DATE
6/3/2025

REVISIONS

1	RFI 21
2	CAR PORTS
3	PHOTOMETRICS

MERRICK

Engineering | Architecture | Design-Build | Surveying | Planning | Geospatial Solutions

5970 GREENWOOD PLAZA BLVD.
 GREENWOOD VILLAGE, CO. 80111
 303-751-0741
 www.merrick.com

PREPARED FOR CENTURY COMMUNITIES



COMPARK VILLAGE SOUTH

TOWN OF PARKER, COUNTY OF DOUGLAS, COLORADO 80134

SHEET TITLE
LIGHT FIXTURE SPEC SHEETS

SHEET NUMBER
53