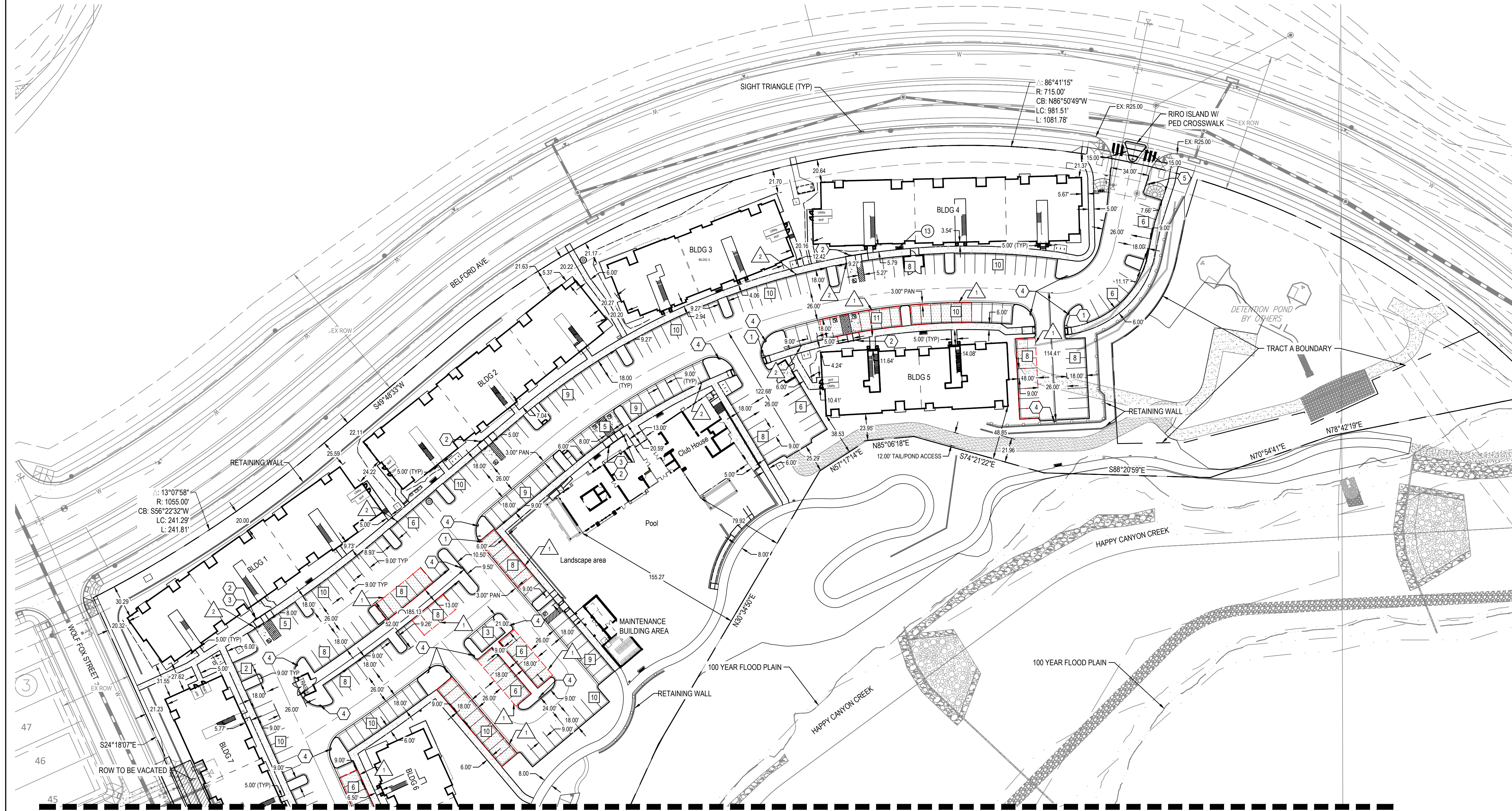
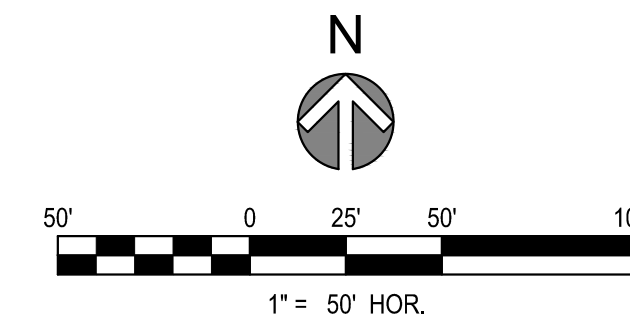


COMPARK VILLAGE SOUTH  
F1 AMD 2 - MULTIFAMILY  
SITE PLAN

LOT 1, COMPARK VILLAGE FILING NO. 1, AMEND NO. 2  
SOUTH HALF SECTION 6, TOWNSHIP 6 SOUTH, RANGE 66 WEST OF THE 6TH PRINCIPAL MERIDIAN  
TOWN OF PARKER, COUNTY OF DOUGLAS, STATE OF COLORADO



MATCH LINE SEE SHEET 4

LEGEND / KEYNOTES

- PARKING SPACE COUNT
- PROPERTY LINE
- SIGN
- R1-1 (30' x 30')
- R7-8 (12' x 18')
- R7-8 P (12' x 9')
- R7-1 (SP) (12' x 18')
- R2-1 (SP) (12' x 18')
- EV CHARGER
- CAR PORT
- PAVEMENT MARKING OF INTERNATIONAL SYMBOL OF ACCESSIBILITY

NOTES  
1. DIMENSIONS ARE TO FLOWLINE UNLESS OTHERWISE NOTED.

PROJECT NUMBER  
65120950

DRAWN BY  
TV

DATE  
04/01/2025

REVISIONS  
1 RFI 21  
2 CAR PORTS  
3 EV CHARGERS



PREPARED FOR CENTURY COMMUNITIES



PROJECT  
**COMPARK VILLAGE SOUTH**

TOWN OF PARKER, COUNTY OF DOUGLAS, COLORADO 80134

SHEET TITLE  
SITE PLAN

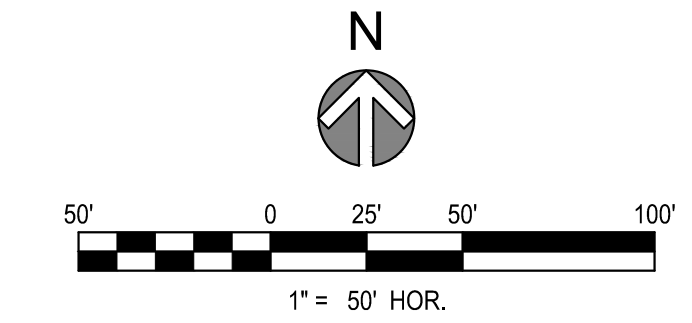
SHEET NUMBER  
3

COMPARK VILLAGE SOUTH  
F1 AMD 2 - MULTIFAMILY  
SITE PLAN

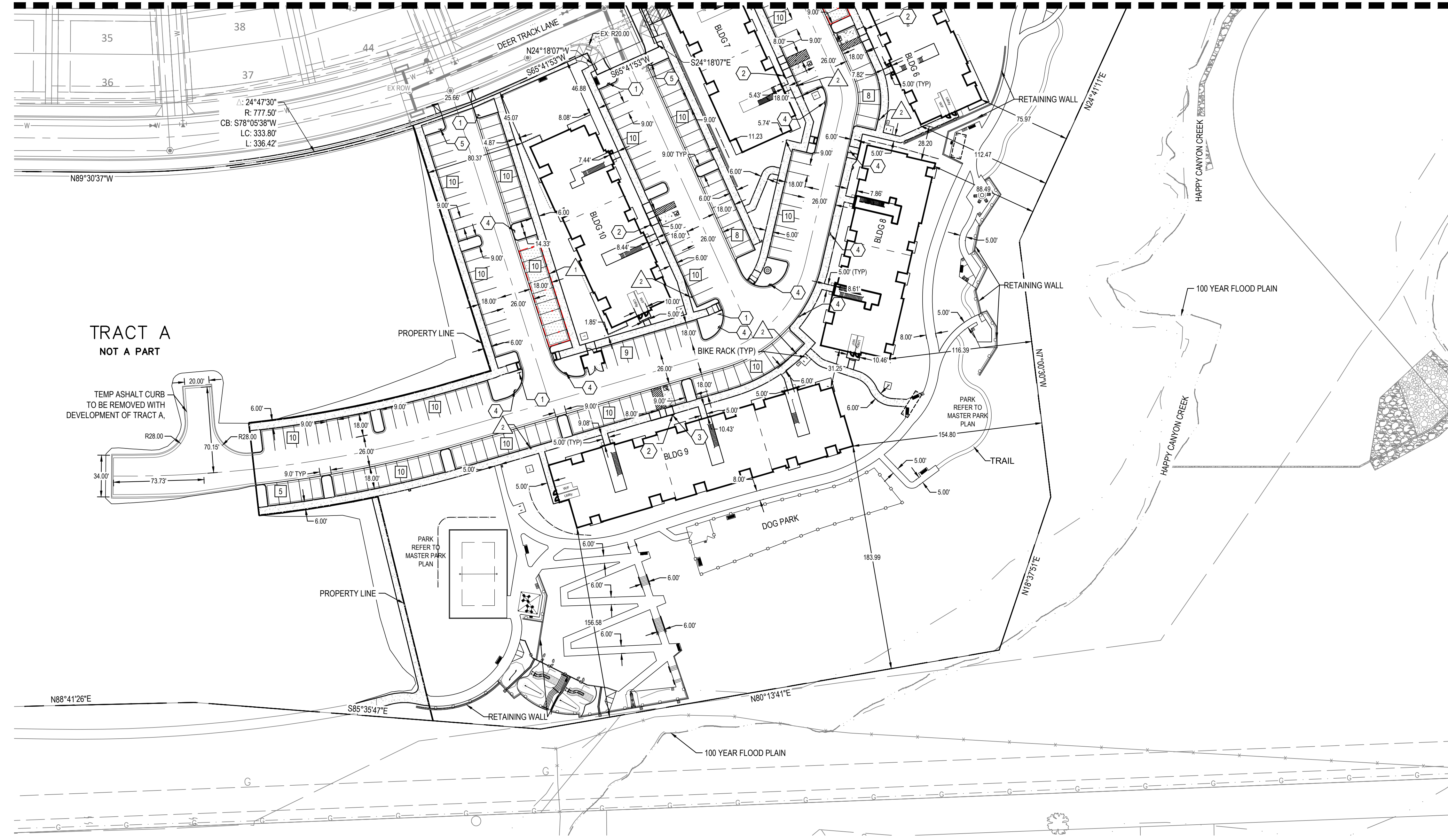
LOT 1, COMPARK VILLAGE FILING NO. 1, AMEND NO. 2  
SOUTH HALF SECTION 6, TOWNSHIP 6 SOUTH, RANGE 66 WEST OF THE 6TH PRINCIPAL MERIDIAN  
TOWN OF PARKER, COUNTY OF DOUGLAS, STATE OF COLORADO

PROJECT NUMBER  
65120950  
  
DRAWN BY  
TV  
  
DATE  
04/01/2025

REVISIONS  
1 RFI 21  
2 CAR PORTS  
3 EV CHARGERS



MATCH LINE SEE SHEET 3



LEGEND / KEYNOTES

- PARKING SPACE COUNT
- PROPERTY LINE
- SIGN
- R1-1 (30' x 30')
- R7-8 (12' x 18')
- R7-8 P (12' x 9')
- R7-1 (SP) (12' x 18')
- R2-1 (SP) (12' x 18')
- EV CHARGER
- CAR PORT
- PAVEMENT MARKING OF INTERNATIONAL MARKING OF ACCESSIBILITY

NOTES  
1. DIMENSIONS ARE TO FLOWLINE UNLESS OTHERWISE NOTED.



PREPARED FOR CENTURY COMMUNITIES



PROJECT  
**COMPARK VILLAGE SOUTH**

TOWN OF PARKER, COUNTY OF DOUGLAS, COLORADO 80134

SHEET TITLE  
SITE PLAN

SHEET NUMBER  
4

**COMPARK VILLAGE SOUTH  
F1 AMD 2 - MULTIFAMILY  
SITE PLAN**

LOT 1, COMPARK VILLAGE FILING NO. 1, AMEND NO. 2  
SOUTH HALF SECTION 6, TOWNSHIP 6 SOUTH, RANGE 66 WEST OF THE 6TH PRINCIPAL MERIDIAN  
TOWN OF PARKER, COUNTY OF DOUGLAS, STATE OF COLORADO

PROJECT NUMBER  
65120950

DRAWN BY  
TV

DATE  
04/01/2025

- REVISIONS
- 1 RFI 21
  - 2 CAR PORTS
  - 3 EV CHARGERS

**MERRICK**  
Engineering | Architecture | Design-Build | Surveying |  
Planning | Geospatial Solutions  
5970 GREENWOOD PLAZA BLVD.  
GREENWOOD VILLAGE, CO. 80111  
303-751-0741  
www.merrick.com

PREPARED FOR CENTURY  
COMMUNITIES

**CENTURY**  
LIVING

PROJECT

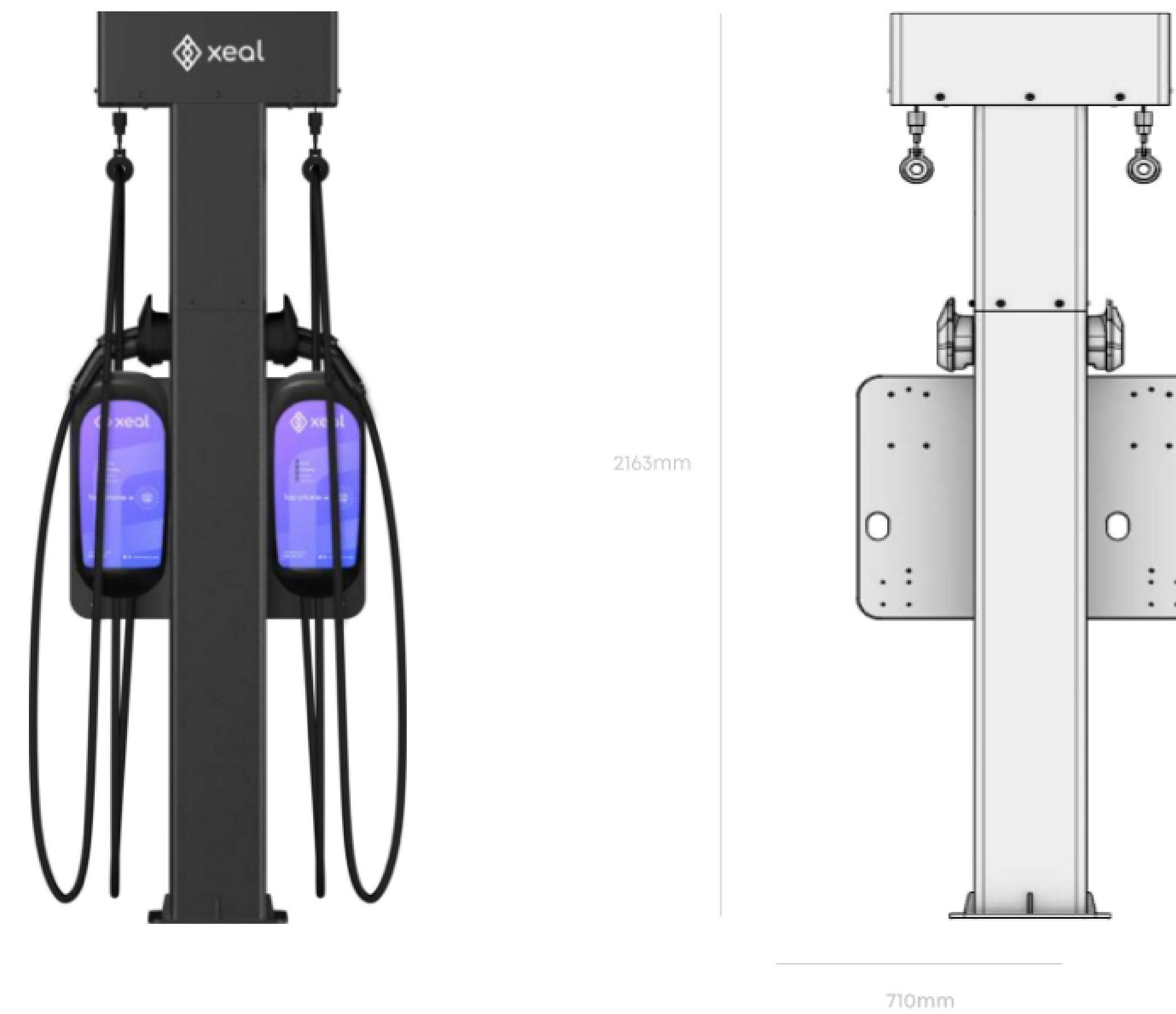
**COMPARK  
VILLAGE  
SOUTH**

TOWN OF PARKER, COUNTY  
OF DOUGLAS, COLORADO  
80134

SHEET TITLE  
**EV CHARGER  
DETAIL**

SHEET NUMBER  
**5**

EV CHARGER SPECIFICATIONS



**Dual Mount Pedestal**

Design	Sleek design and configurable for indoor and outdoor use
Product Dimensions	710mm W x 165mm D x 2163mm H (28" W x 6.5" D x 85" H)

