



RFCC

APPROVED DATE: 04/04/2025

Planning Approval By: S. Nerger

COMPARK VILLAGE SOUTH F1 AMD 2 - MULTIFAMILY SITE PLAN

LOT 2, COMPARK VILLAGE FILING NO. 1, AMEND NO. 2
SOUTH HALF SECTION 6, TOWNSHIP 6 SOUTH, RANGE 66 WEST OF THE 6TH PRINCIPAL MERIDIAN
TOWN OF PARKER, COUNTY OF DOUGLAS, STATE OF COLORADO

PROJECT NUMBER
210512

DRAWN BY

DATE
02/21/2025



Architecture + Planning
820 16th Street, Suite 500
Denver, CO 80202
ktgy.com
303.825.6400



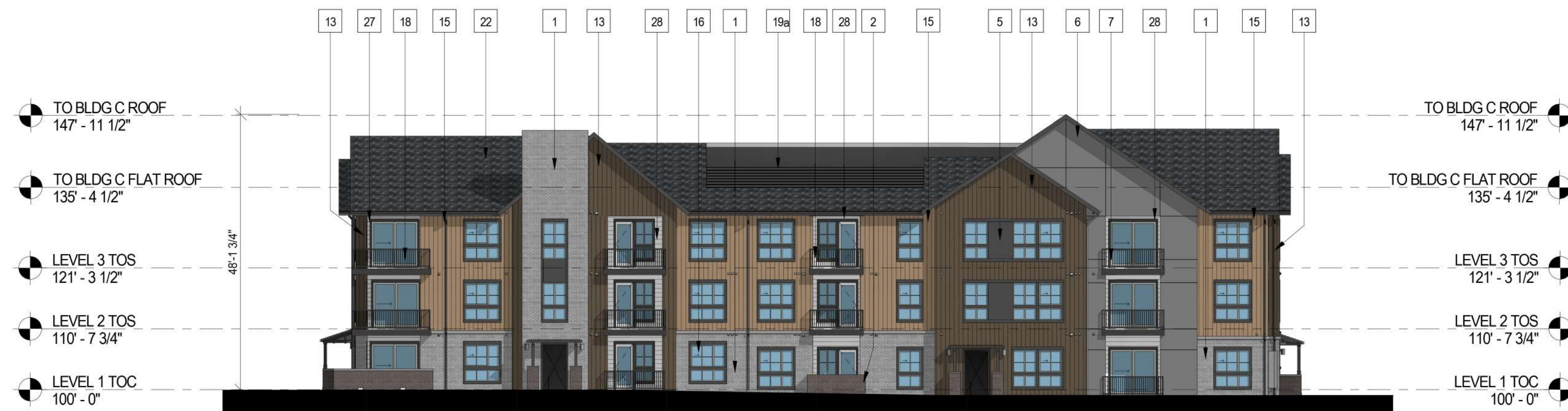
3 BUILDING C - SIDE ELEVATION
1/16" = 1'-0"



4 BUILDING C - SIDE ELEVATION
1/16" = 1'-0"



2 BUILDING C - REAR ELEVATION
1/16" = 1'-0"



1 BUILDING C - FRONT ELEVATION
1/16" = 1'-0"



Key Map n.t.s

#	KEYNOTES - SIP
1	BRICK - RUNNING - COLOR: IRONWORKS
2	BRICK - RUNNING - COLOR: NIGHTFALL
3	FIBER CEMENT PANELING - COLOR: SW 7632 MODERN GRAY
4	FIBER CEMENT PANELING - COLOR: SW 7631 CITY LOFT
5	FIBER CEMENT PANELING - COLOR: SW 7069 IRON ORE
6	FIBER CEMENT PANELING - COLOR: SW 7067 CITYSCAPE
7	METAL PANEL - COLOR: SW 7515 HOMESTEAD BROWN
8	METAL PANEL - COLOR: SW 6254 LAZY GRAY
9	BOARD AND BATTEN - COLOR: SW 6237 DARK NIGHT
10	BOARD AND BATTEN - COLOR: SW 7631 CITY LOFT
11	VERTICAL SIDING - COLOR: SW 7631 CITY LOFT
12	VERTICAL SIDING - COLOR: SW 6237 DARK NIGHT
13	VERTICAL SIDING - COLOR: SW 7055 ENDURING BRONZE
14	VERTICAL SIDING - COLOR: SW 9578 RESTORATION
15	VERTICAL SIDING - COLOR: WOODTONE SUMMER WHEAT
16	VINYL WINDOW
18	METAL RAILING
19a	MECHANICAL SCREEN - ~8% OPEN HORIZONTAL TREX PLANKS
20	STOREFRONT
21	COLUMN
22	ASPHALT SHINGLE ROOFING
23	BOARD AND BATTEN - COLOR: SW 7069 IRON ORE
24	STONE - COLOR 1
25	EXTERIOR LIGHT FIXTURE
26	HORIZONTAL SIDING - COLOR: SW 9578 RESTORATION
27	HORIZONTAL SIDING - COLOR: SW 7632 MODERN GRAY
28	HORIZONTAL SIDING - COLOR: SW 7631 CITY LOFT
29	HORIZONTAL SIDING - COLOR: SW 6237 DARK NIGHT
30	HORIZONTAL SIDING - COLOR: SW 7055 ENDURING BRONZE
32	DOWNSPOUT
33	LIGHT BRICK COLOR MATCH PAINT
34	DARK BRICK COLOR MATCH PAINT

NOTES:
 1. SEE MATERIAL BOARDS FOR MORE INFORMATION.
 2. SEE SITE PLAN FOR DIMENSIONS BETWEEN ENTRIES.
 3. GROUND FLOOR TRANSPARENCY TO BE MIN. OF 25% MEASURED AS A PERCENTAGE OF GLAZING AT THE BASE OF THE BUILDING.
 4. UPPER FLOOR TRANSPARENCY TO BE MIN. OF 15% GLAZING MEASURED AS A PERCENTAGE OF GLAZING ON THE MIDDLE OF THE BUILDING.
 5. TRIM AROUND WINDOWS SHALL BE A MINIMUM OF THREE AND ONE-HALF (3 1/2) INCHES WIDE, AND TRIM AROUND DOORS SHOULD BE A MINIMUM OF TWO (2) INCHES WIDE.
 6. EXTERIOR CYLINDRICAL WALL SCONCE LIGHT FIXTURES HAVE AN OUTPUT OF 800 LUMENS AND ARE THEREFORE NOT SHOWN ON THE PHOTOMETRIC.

PREPARED FOR CENTURY COMMUNITIES



PROJECT

COMPARK VILLAGE SOUTH

TOWN OF PARKER,
COUNTY OF DOUGLAS, COLORADO
80134

SHEET TITLE

BUILDING C ELEVATIONS (BLDG 6)

SHEET NUMBER

57 (B6)



RFCC

APPROVED DATE: 04/04/2025

Planning Approval By: S. Nerger

COMPARK VILLAGE SOUTH F1 AMD 2 - MULTIFAMILY SITE PLAN

LOT 2, COMPARK VILLAGE FILING NO. 1, AMEND NO. 2
SOUTH HALF SECTION 6, TOWNSHIP 6 SOUTH, RANGE 66 WEST OF THE 6TH PRINCIPAL MERIDIAN
TOWN OF PARKER, COUNTY OF DOUGLAS, STATE OF COLORADO



KEY MAP - n.t.s
BUILDING C

PROJECT NUMBER
210512

DRAWN BY

DATE
02/21/2025



Architecture + Planning
820 16th Street, Suite 500
Denver, CO 80202
ktgy.com
303.825.6400

PREPARED FOR CENTURY
COMMUNITIES



PROJECT

**COMPARK
VILLAGE
SOUTH**

TOWN OF PARKER,
COUNTY
OF DOUGLAS, COLORADO
80134

SHEET TITLE
**BLDG C
MATERIAL
BOARD
(BLDG 6)**

SHEET NUMBER

58 (B6)



FRONT ELEVATION

Note: Trim around windows shall be minimum of three and one-half (3-1/2) inches wide, and trim around doors shall be a minimum of (2) inches wide.

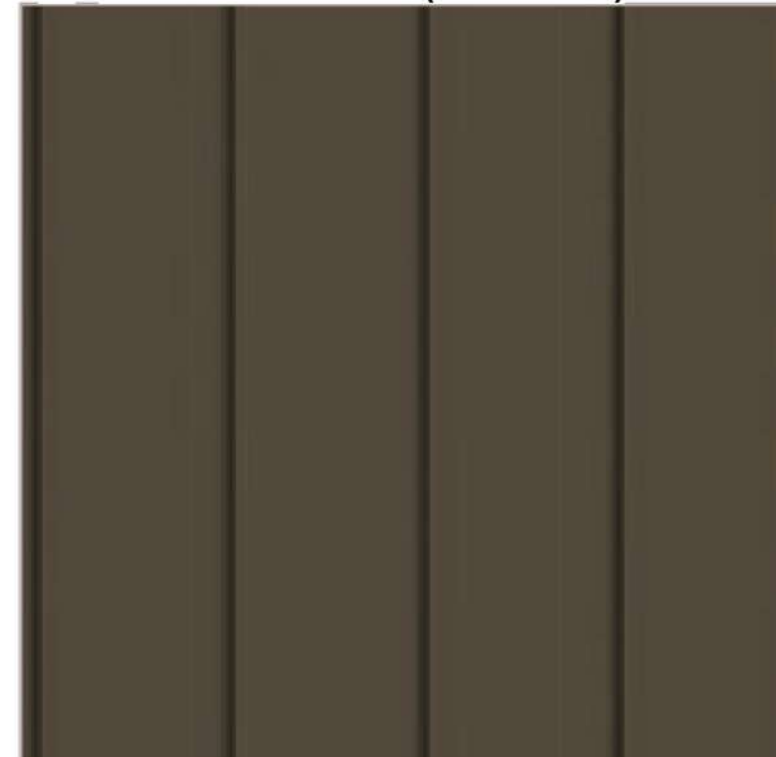
1 BRICK LIGHT BRICK



15 VERTICAL SIDING (WOOD TONE)



13 VERTICAL SIDING (V-GROOVE)



6 CEMENTITIOUS PANEL W/ REVEAL



4 CEMENTITIOUS PANEL W/ REVEAL



28 HORIZONTAL SIDING (V-GROOVE)



27 HORIZONTAL SIDING (V-GROOVE)



2 BRICK DARK BRICK



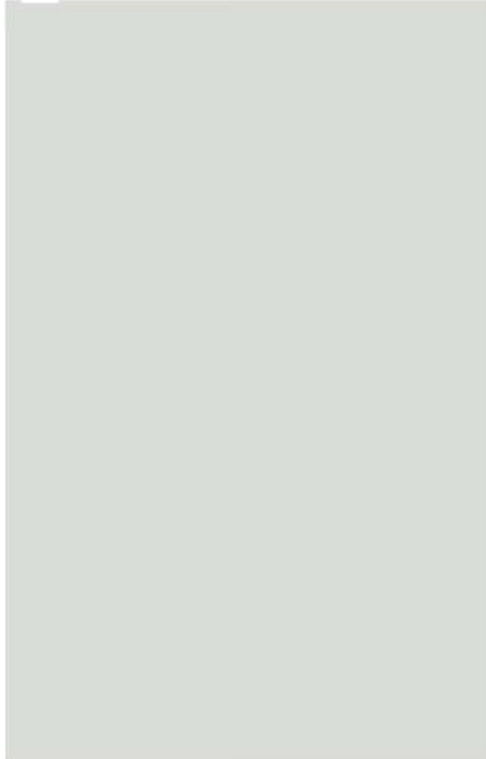
7 METAL PANEL



5 CEMENTITIOUS PANEL



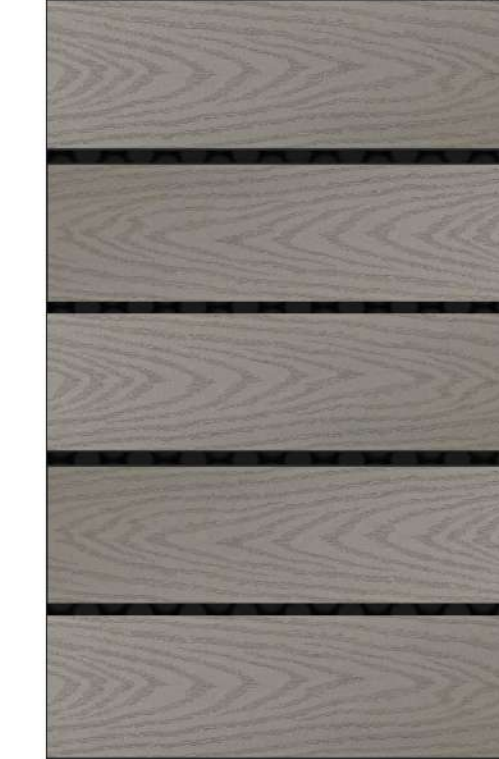
**ADOBE (NON-WHITE)
16 WINDOW FRAME**



22 ROOF



**19a ROOF SCREEN -
'CLAM SHELL' COLOR**



**33 LIGHT BRICK
COLOR MATCH PAINT**



Custom Sherwin Williams				
CCE x Colorant	02	32	64	128
Blue	-	18	-	1
Maroon	-	32	-	-
Deep Gold	2	28	-	1



RFCC

APPROVED DATE: 04/04/2025

Planning Approval By: S. Nerger

COMPARK VILLAGE SOUTH F1 AMD 2 - MULTIFAMILY SITE PLAN

LOT 2, COMPARK VILLAGE FILING NO. 1, AMEND NO. 2
SOUTH HALF SECTION 6, TOWNSHIP 6 SOUTH, RANGE 66 WEST OF THE 6TH PRINCIPAL MERIDIAN
TOWN OF PARKER, COUNTY OF DOUGLAS, STATE OF COLORADO

PROJECT NUMBER
210512

DRAWN BY

DATE
02/21/2025



Architecture + Planning
820 16th Street, Suite 500
Denver, CO 80202
ktgy.com
303.825.6400



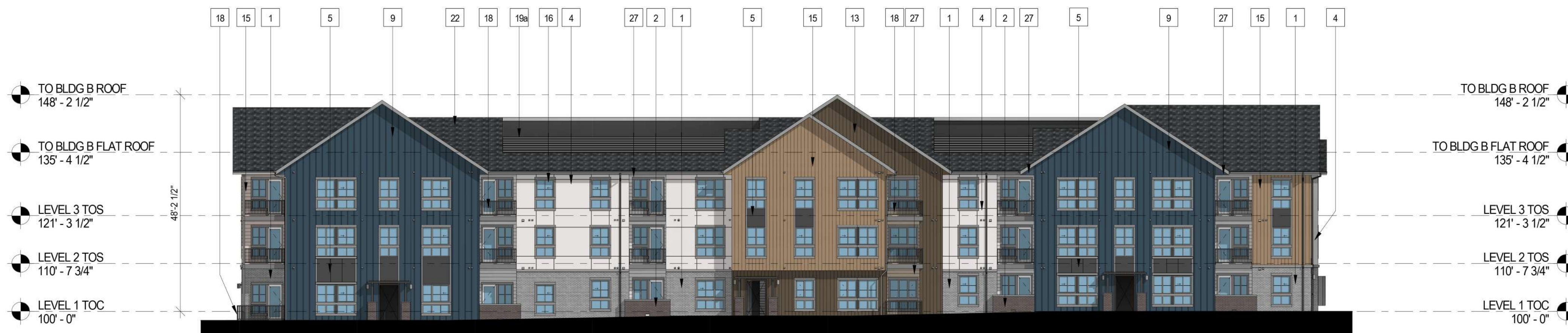
3 BUILDING B - SIDE ELEVATION
1/16" = 1'-0"



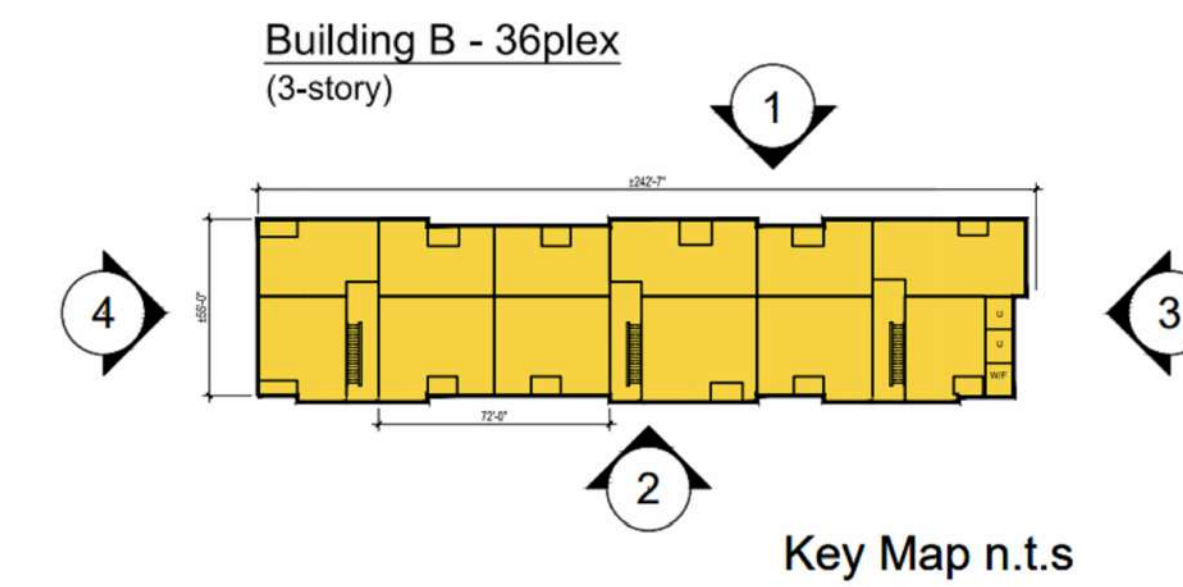
4 BUILDING B - SIDE ELEVATION
1/16" = 1'-0"



2 BUILDING B - REAR ELEVATION
1/16" = 1'-0"



1 BUILDING B - FRONT ELEVATION
1/16" = 1'-0"



#	KEYNOTES - SIP
1	BRICK - RUNNING - COLOR: IRONWORKS
2	BRICK - RUNNING - COLOR: NIGHTFALL
3	FIBER CEMENT PANELING - COLOR: SW 7632 MODERN GRAY
4	FIBER CEMENT PANELING - COLOR: SW 7631 CITY LOFT
5	FIBER CEMENT PANELING - COLOR: SW 7069 IRON ORE
6	FIBER CEMENT PANELING - COLOR: SW 7067 CITYSCAPE
7	METAL PANEL - COLOR: SW 7515 HOMESTEAD BROWN
8	METAL PANEL - COLOR: SW 6254 LAZY GRAY
9	BOARD AND BATTEN - COLOR: SW 6237 DARK NIGHT
10	BOARD AND BATTEN - COLOR: SW 7631 CITY LOFT
11	VERTICAL SIDING - COLOR: SW 7631 CITY LOFT
12	VERTICAL SIDING - COLOR: SW 6237 DARK NIGHT
13	VERTICAL SIDING - COLOR: SW 7055 ENDURING BRONZE
14	VERTICAL SIDING - COLOR: SW 9578 RESTORATION
15	VERTICAL SIDING - COLOR: WOODTONE SUMMER WHEAT
16	VINYL WINDOW
18	METAL RAILING
19a	MECHANICAL SCREEN - ~8% OPEN HORIZONTAL TREX PLANKS
20	STOREFRONT
21	COLUMN
22	ASPHALT SHINGLE ROOFING
23	BOARD AND BATTEN - COLOR: SW 7069 IRON ORE
24	STONE - COLOR 1
25	EXTERIOR LIGHT FIXTURE
26	HORIZONTAL SIDING - COLOR: SW 9578 RESTORATION
27	HORIZONTAL SIDING - COLOR: SW 7632 MODERN GRAY
28	HORIZONTAL SIDING - COLOR: SW 7631 CITY LOFT
29	HORIZONTAL SIDING - COLOR: SW 6237 DARK NIGHT
30	HORIZONTAL SIDING - COLOR: SW 7055 ENDURING BRONZE
32	DOWNSPOUT
33	LIGHT BRICK COLOR MATCH PAINT
34	DARK BRICK COLOR MATCH PAINT

NOTES:
 1. SEE MATERIAL BOARDS FOR MORE INFORMATION.
 2. SEE SITE PLAN FOR DIMENSIONS BETWEEN ENTRIES.
 3. GROUND FLOOR TRANSPARENCY TO BE MIN. OF 25% MEASURED AS A PERCENTAGE OF GLAZING AT THE BASE OF THE BUILDING.
 4. UPPER FLOOR TRANSPARENCY TO BE MIN. OF 15% GLAZING MEASURED AS A PERCENTAGE OF GLAZING ON THE MIDDLE OF THE BUILDING.
 5. TRIM AROUND WINDOWS SHALL BE A MINIMUM OF THREE AND ONE-HALF (3 1/2) INCHES WIDE, AND TRIM AROUND DOORS SHALL BE A MINIMUM OF TWO (2) INCHES WIDE.
 6. EXTERIOR CYLINDRICAL WALL SCONCE LIGHT FIXTURES HAVE AN OUTPUT OF 800 LUMENS AND ARE THEREFORE NOT SHOWN ON THE PHOTOMETRIC.

PREPARED FOR CENTURY COMMUNITIES



PROJECT

COMPARK VILLAGE SOUTH

TOWN OF PARKER,
COUNTY OF DOUGLAS, COLORADO
80134

SHEET TITLE

BUILDING B ELEVATIONS (BLDG 7)

SHEET NUMBER

55 (B7)



R FCC

APPROVED DATE: 04/04/2025

Planning Approval By: S. Nerger

COMPARK VILLAGE SOUTH F1 AMD 2 - MULTIFAMILY SITE PLAN

LOT 2, COMPARK VILLAGE FILING NO. 1, AMEND NO. 2
SOUTH HALF SECTION 6, TOWNSHIP 6 SOUTH, RANGE 66 WEST OF THE 6TH PRINCIPAL MERIDIAN
TOWN OF PARKER, COUNTY OF DOUGLAS, STATE OF COLORADO

PROJECT NUMBER
210512

DRAWN BY

DATE
02/21/2025



KEY MAP - n.t.s
BUILDING B



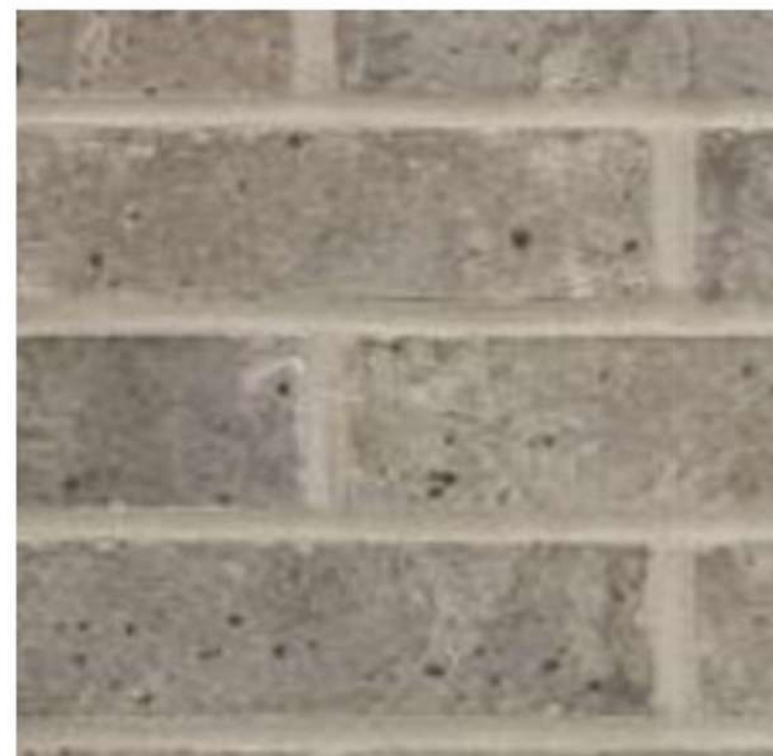
Architecture + Planning
820 16th Street, Suite 500
Denver, CO 80202
ktgy.com
303.825.6400



FRONT ELEVATION

Note: Trim around windows shall be minimum of three and one-half (3-1/2) inches wide, and trim around doors shall be a minimum of (2) inches wide.

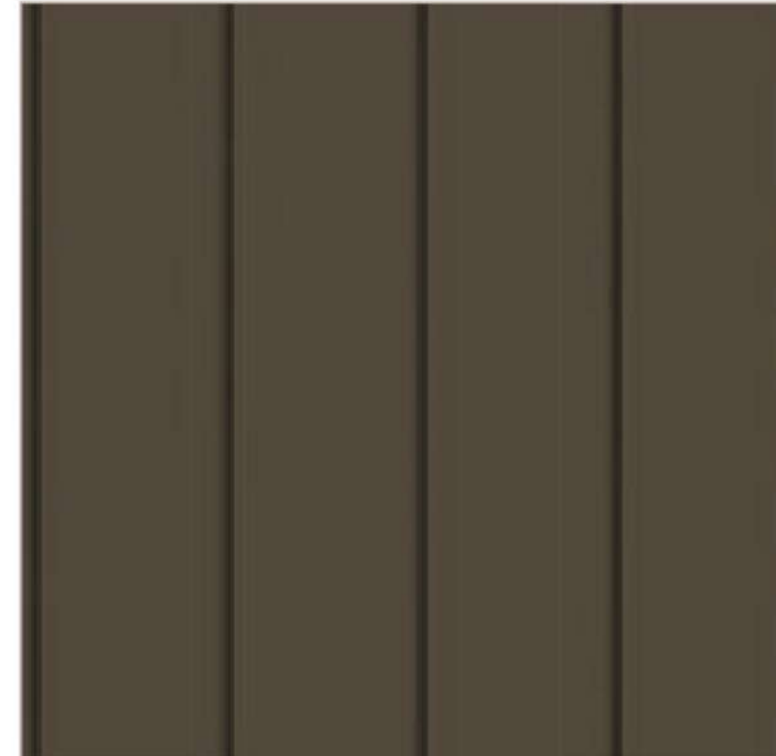
1 BRICK LIGHT BRICK



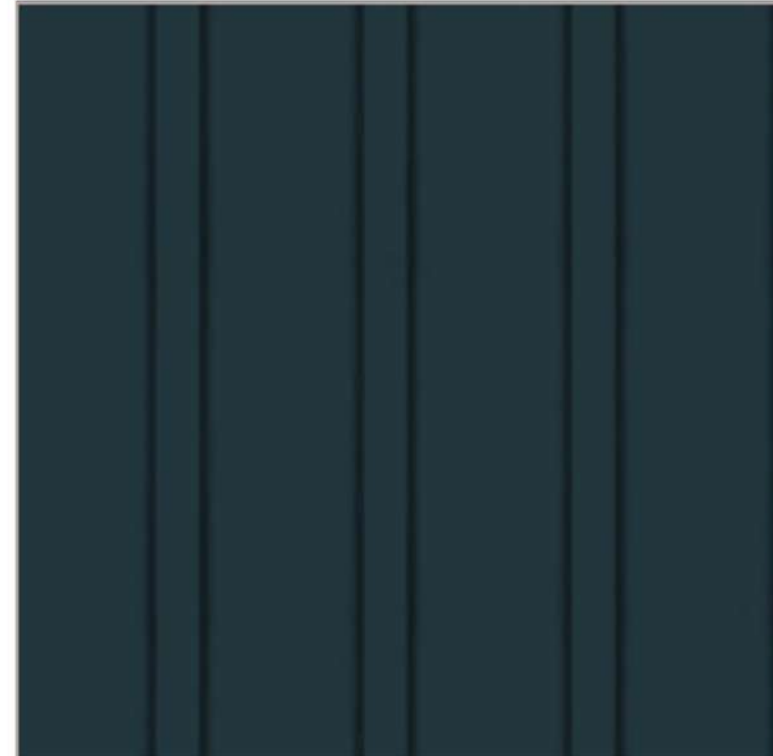
15 VERTICAL SIDING (WOOD TONE)



13 VERTICAL SIDING (V-GROOVE)



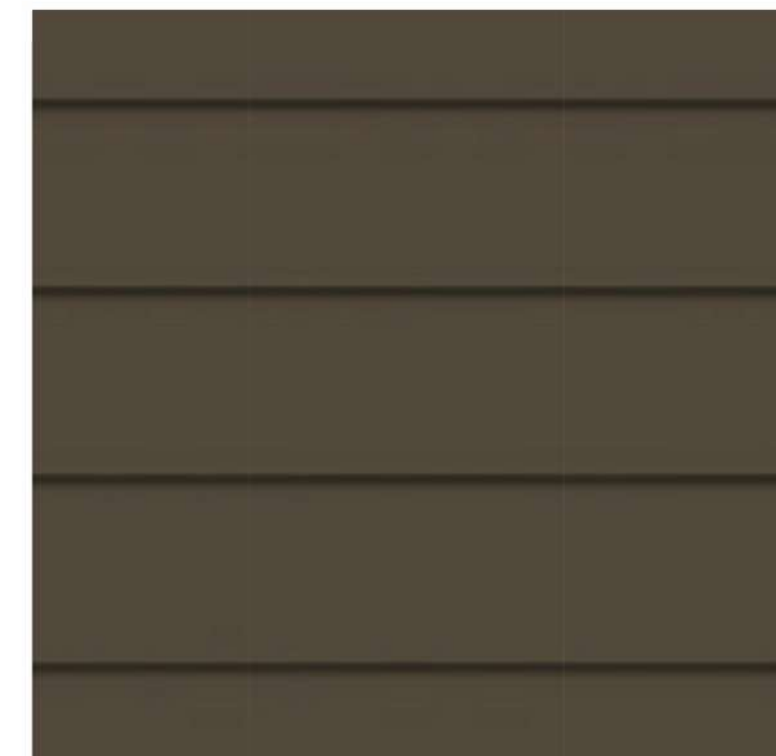
12 VERTICAL SIDING (V-GROOVE)



4 CEMENTITIOUS PANEL W/ REVEAL



30 HORIZONTAL SIDING (V-GROOVE)



27 HORIZONTAL SIDING (V-GROOVE)



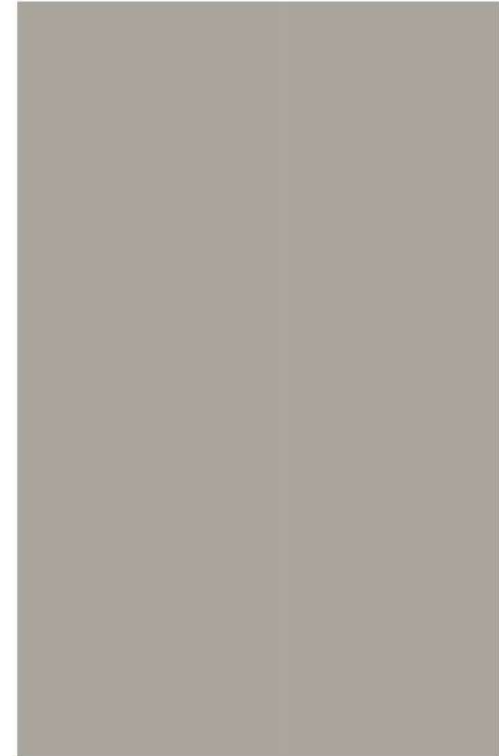
2 BRICK DARK BRICK



7 METAL PANEL



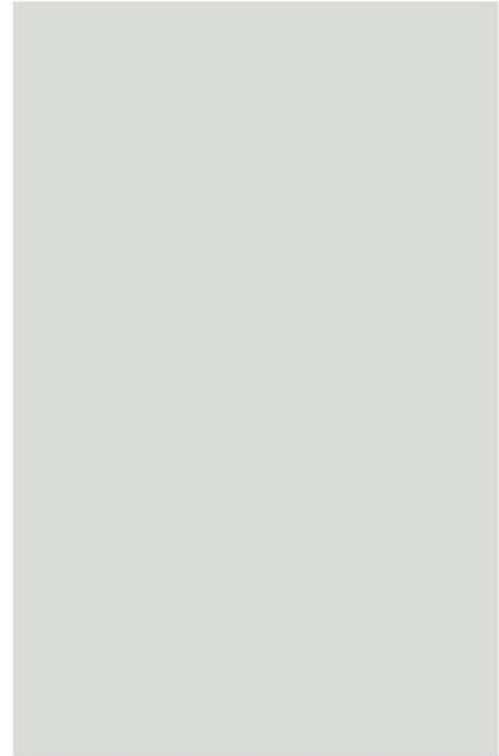
6 CEMENTITIOUS PANEL



5 CEMENTITIOUS PANEL



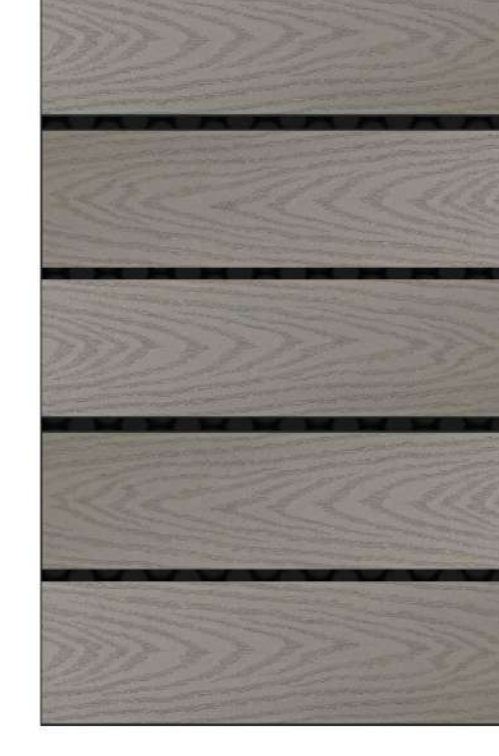
ADOBE (NON-WHITE)
16 WINDOW FRAME



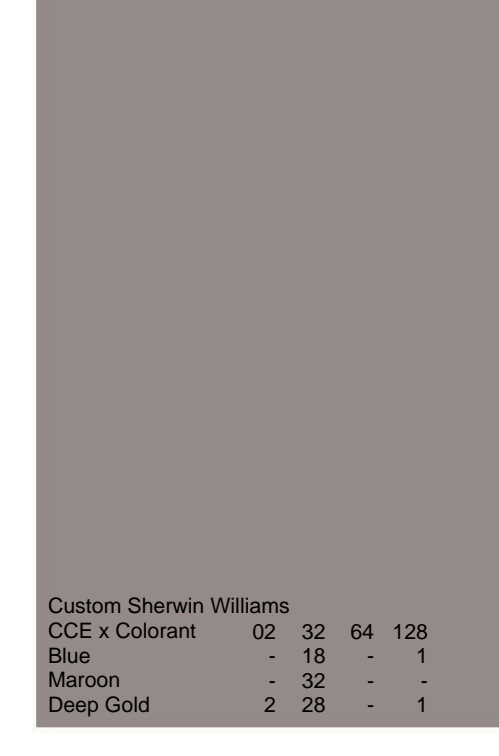
22 ROOF



19a ROOF SCREEN -
'CLAM SHELL' COLOR



33 LIGHT BRICK
COLOR MATCH PAINT



Custom Sherwin Williams				
CCE x Colorant	02	32	64	128
Blue	-	18	-	1
Maroon	-	32	-	-
Deep Gold	2	28	-	1

PREPARED FOR CENTURY
COMMUNITIES



PROJECT

COMPARK VILLAGE SOUTH

TOWN OF PARKER,
COUNTY
OF DOUGLAS, COLORADO
80134

SHEET TITLE
BLDG B
MATERIAL
BOARD
(BLDG 7)

SHEET NUMBER

56 (B7)