



RFCC

APPROVED DATE: 04/04/2025

Planning Approval By: S. Nerger

COMPARK VILLAGE SOUTH F1 AMD 2 - MULTIFAMILY SITE PLAN

LOT 1, COMPARK VILLAGE FILING NO. 1, AMEND NO. 2
SOUTH HALF SECTION 6, TOWNSHIP 6 SOUTH, RANGE 66 WEST OF THE 6TH PRINCIPAL MERIDIAN
TOWN OF PARKER, COUNTY OF DOUGLAS, STATE OF COLORADO

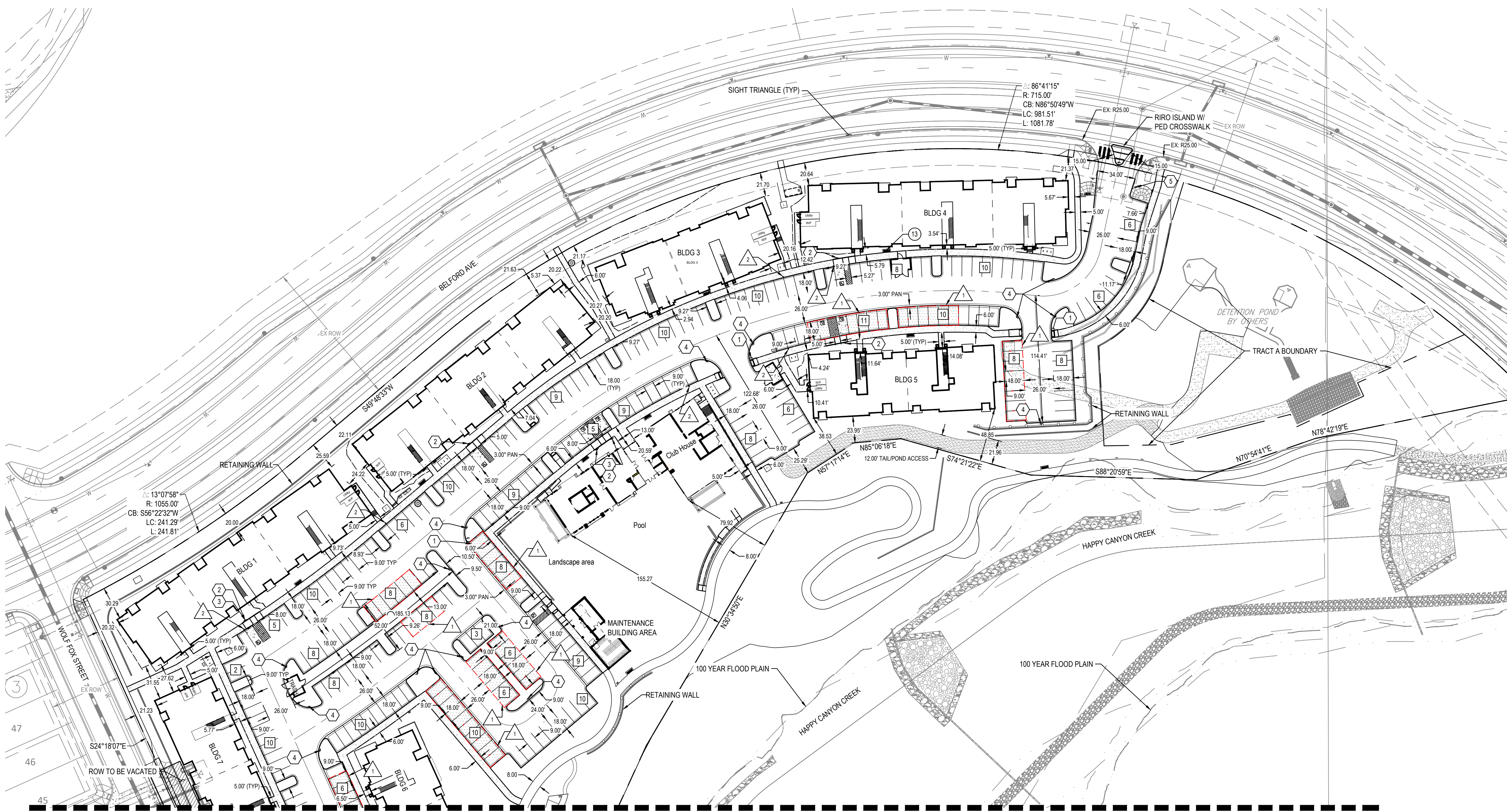
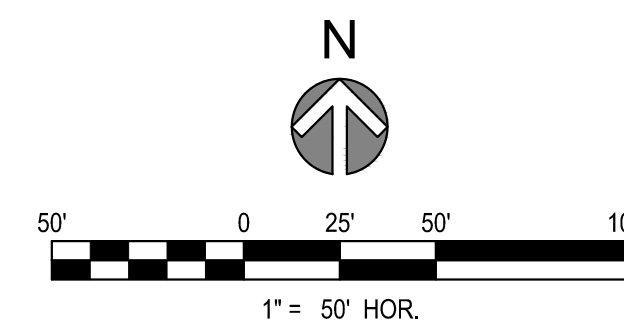
PROJECT NUMBER
65120950

DRAWN BY
TV

DATE
04/01/2025

REVISIONS

1	RFI 21
2	CAR PORTS
3	EV CHARGERS



LEGEND / KEYNOTES

- # PARKING SPACE COUNT
- PROPERTY LINE
- SIGN
- ① R1-1 (30' x 30')
- ② R7-8 (12' x 18')
- ③ R7-8 P (12' x 9')
- ④ R7-1 (SP) (12' x 18')
- ⑤ R2-1 (SP) (12' x 18')
- △ EV CHARGER
- PAVEMENT MARKING OF INTERNATIONAL SYMBOL OF ACCESSIBILITY
- △ CAR PORT



Engineering | Architecture | Design-Build | Surveying |
Planning | Geospatial Solutions
5970 GREENWOOD PLAZA BLVD.
GREENWOOD VILLAGE, CO. 80111
303-751-0741
www.merrick.com

PREPARED FOR CENTURY COMMUNITIES



PROJECT

COMPARK VILLAGE SOUTH

TOWN OF PARKER, COUNTY OF DOUGLAS, COLORADO 80134

SHEET TITLE
SITE PLAN

SHEET NUMBER
3

NOTES

- DIMENSIONS ARE TO FLOWLINE UNLESS OTHERWISE NOTED.

MATCH LINE SEE SHEET 4



RFCC

APPROVED DATE: 04/04/2025

Planning Approval By: S. Nerger

COMPARK VILLAGE SOUTH F1 AMD 2 - MULTIFAMILY SITE PLAN

LOT 1, COMPARK VILLAGE FILING NO. 1, AMEND NO. 2
SOUTH HALF SECTION 6, TOWNSHIP 6 SOUTH, RANGE 66 WEST OF THE 6TH PRINCIPAL MERIDIAN
TOWN OF PARKER, COUNTY OF DOUGLAS, STATE OF COLORADO

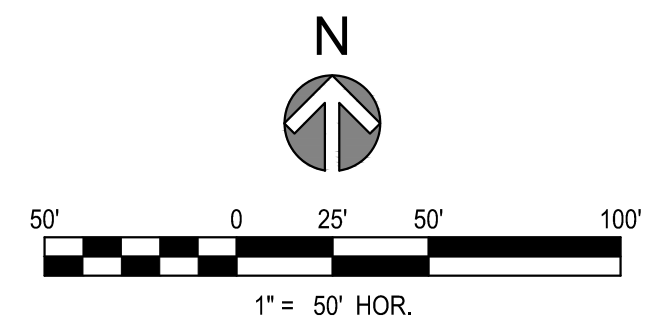
PROJECT NUMBER
65120950

DRAWN BY
TV

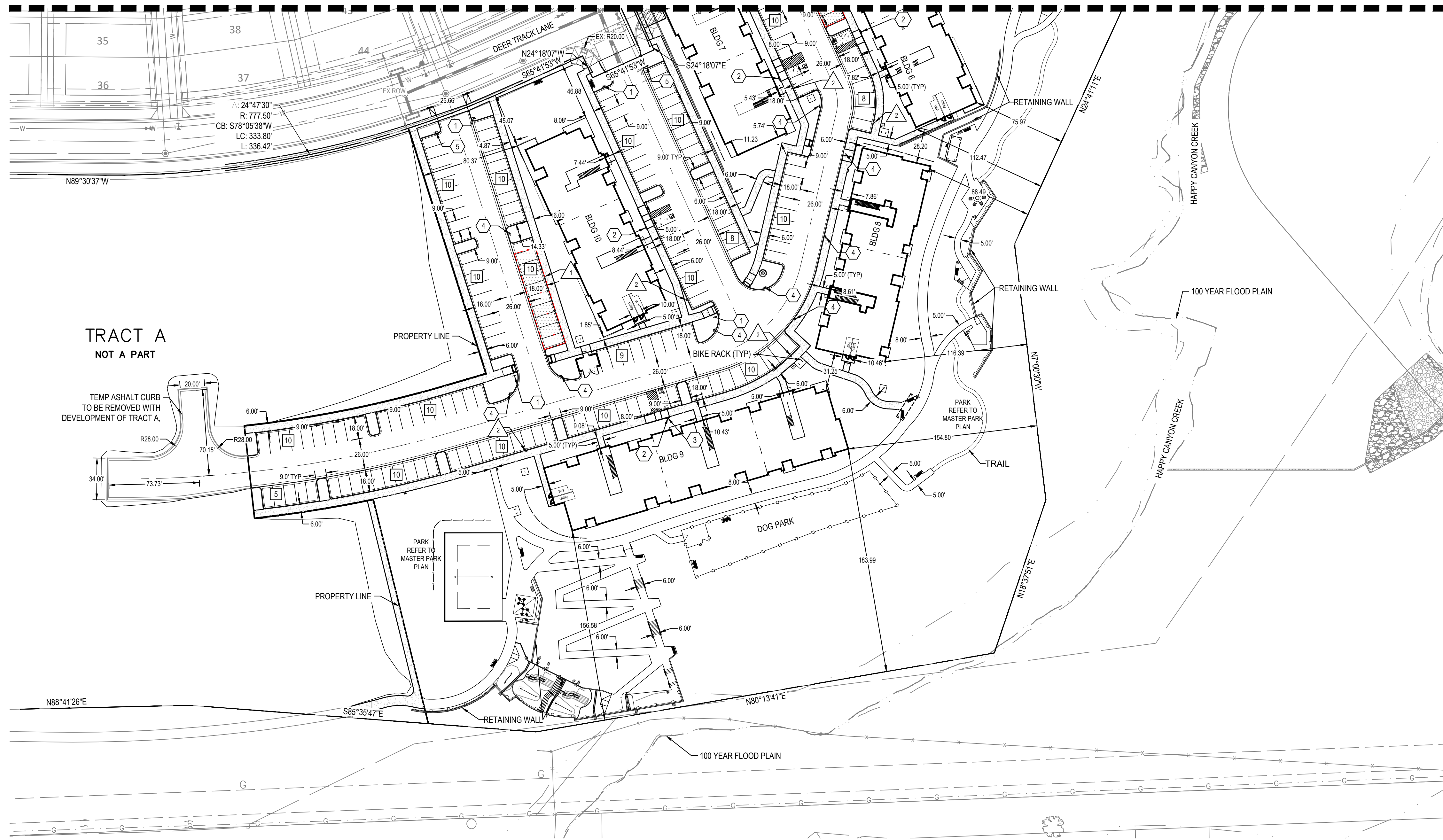
DATE
04/01/2025

REVISIONS

1	RFI 21
2	CAR PORTS
3	EV CHARGERS



MATCH LINE SEE SHEET 3



LEGEND / KEYNOTES

- PARKING SPACE COUNT
- PROPERTY LINE
- SIGN
- R1-1 (30' x 30')
- R7-8 (12' x 18')
- R7-8 P (12' x 9')
- R7-1 (SP) (12' x 18')
- R2-1 (SP) (12' x 18')
- EV CHARGER
- CAR PORT
- PAVEMENT MARKING OF INTERNATIONAL MARKING OF ACCESSIBILITY



PREPARED FOR CENTURY COMMUNITIES



PROJECT COMPARK VILLAGE SOUTH

TOWN OF PARKER, COUNTY OF DOUGLAS, COLORADO 80134

NOTES

- DIMENSIONS ARE TO FLOWLINE UNLESS OTHERWISE NOTED.

SHEET TITLE

SITE PLAN

SHEET NUMBER

4



RFCC

APPROVED DATE: 04/04/2025

Planning Approval By: S. Nerger

COMPARK VILLAGE SOUTH F1 AMD 2 - MULTIFAMILY SITE PLAN

LOT 1, COMPARK VILLAGE FILING NO. 1, AMEND NO. 2
SOUTH HALF SECTION 6, TOWNSHIP 6 SOUTH, RANGE 66 WEST OF THE 6TH PRINCIPAL MERIDIAN
TOWN OF PARKER, COUNTY OF DOUGLAS, STATE OF COLORADO

PROJECT NUMBER
65120950

DRAWN BY
TV

DATE
04/01/2025

- REVISIONS
- 1 RFI 21
 - 2 CAR PORTS
 - 3 EV CHARGERS



PREPARED FOR CENTURY COMMUNITIES



PROJECT

COMPARK VILLAGE SOUTH

TOWN OF PARKER, COUNTY OF DOUGLAS, COLORADO 80134

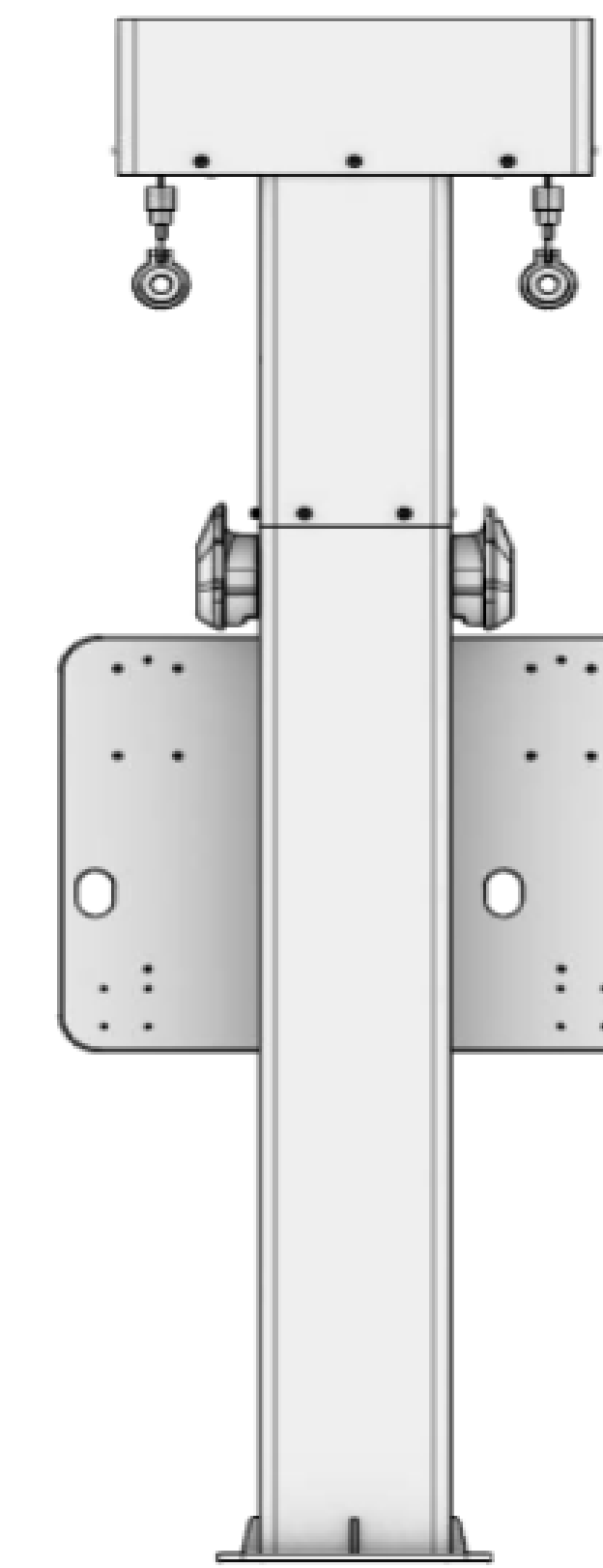
SHEET TITLE
EV CHARGER DETAIL

SHEET NUMBER
5

EV CHARGER SPECIFICATIONS



2163mm



710mm

Dual Mount Pedestal

Design	Sleek design and configurable for indoor and outdoor use
Product Dimensions	710mm W x 165mm D x 2163mm H (28" W x 6.5" D x 85" H)

