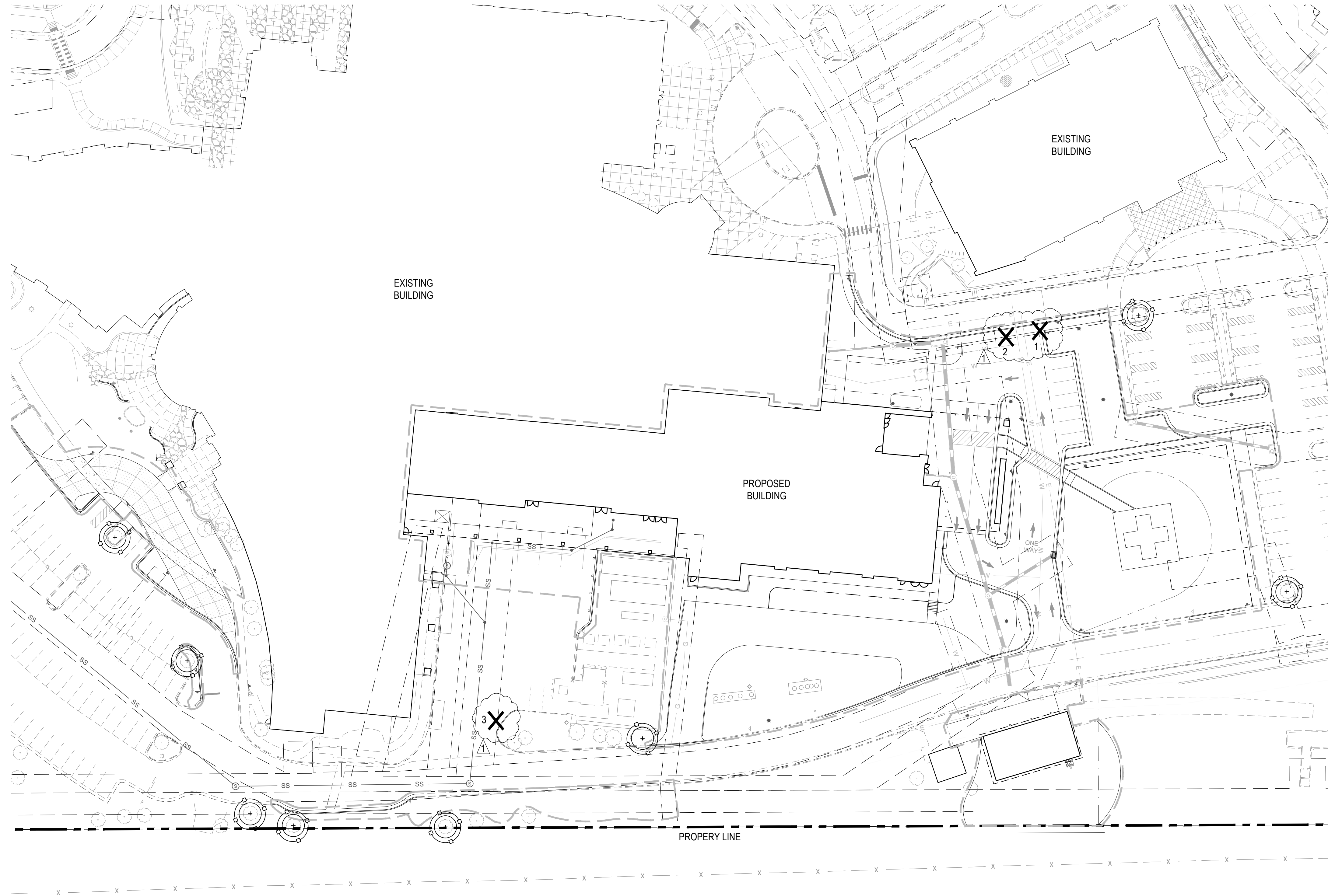


CROWN POINT FILING 1 AMENDMENT 30

LOT 1, TRACT A & B

LOCATED IN THE NW 1/4, SECTION 10, TOWNSHIP 6 SOUTH, RANGE 66 WEST,
TOWN OF PARKER, DOUGLAS COUNTY, COLORADO.

SITE PLAN



TREE CONSERVATION LEGEND:

- EXISTING TREES TO BE PRESERVED
- EXISTING TREE TO BE REMOVED
- TREE PROTECTION FENCING, RE: DTL. 2 / SHT. 14

- PROPERTY LINE

TREE DEMOLITION TABLE:

#	TREE SPECIES	SIZE	NOTES
1	Linden	5" CAL.	REMOVE
2	Linden	4" CAL.	REMOVE
3	Ponderosa Pine	14" CAL.	REMOVE

TREE MITIGATION NOTE:

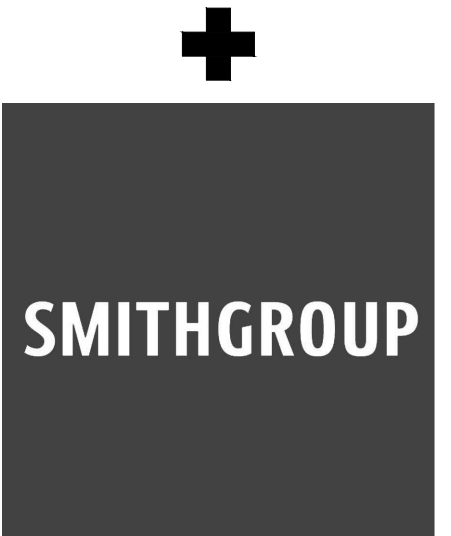
(3) REMOVED TREES ARE BEING MITIGATED BY PLANTING (8) ADDITIONAL TREES AND (146) ADDITIONAL SHRUBS BEYOND STANDARD LANDSCAPE REQUIREMENTS.

As stated in the previous review, the Town will require a monetary valuation for the three trees to be removed. Once we know the monetary value of the removed trees, we can determine if the 8 additional trees are sufficient (should be).

Pursuant to the Section 13.08.090 (l) Tree and shrub conservation and replacement; these trees will need to be evaluated based on the size and health of the tree itself. A monetary value will then need to be applied to the tree. Trees proposed to be planted above the requirements can then be counted as mitigation.



BOULDER ASSOCIATES
1426 PEARL STREET, SUITE 300
BOULDER, COLORADO 80302
303.499.7795



ADVENTHEALTH PARKER FACILITY EXPANSION

CROWN POINT, 30TH AMDMT
LOT 1, TRACT A & B
PARKER, CO 80138

SUBMITTALS	
DESCRIPTION	DATE
1ST SUBMITTAL	06/03/2024
2ND SUBMITTAL	08/16/2024
3RD SUBMITTAL	10/10/2024
4TH SUBMITTAL	11/07/2024
1ST AMENDMENT	04/14/2025

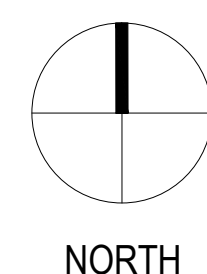
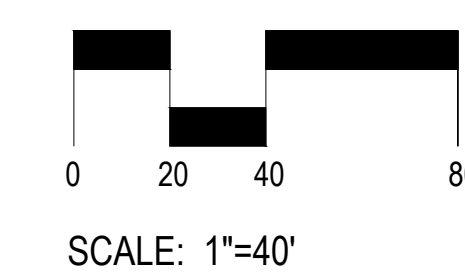
DATE
08/16/2024

PARKER PROJECT NUMBER
SP24-XXX

SHEET TITLE
TREE CONSERVATION PLAN

DRAWING NUMBER

14 of 25



1 TREE CONSERVATION PLAN
14 SCALE: 1" = 40'

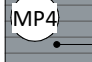

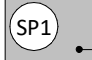

CROWN POINT FILING 1 AMENDMENT 30

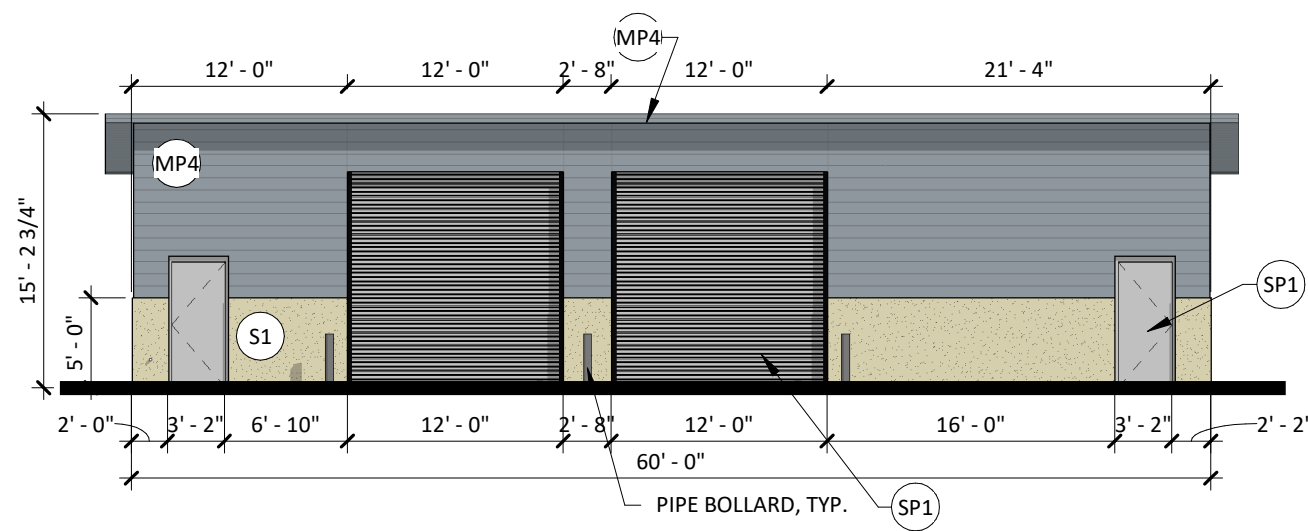
LOT 1, TRACT A & B

LOCATED IN THE NW 1/4, SECTION 10, TOWNSHIP 6 SOUTH, RANGE 66 WEST,
TOWN OF PARKER, DOUGLAS COUNTY, COLORADO.

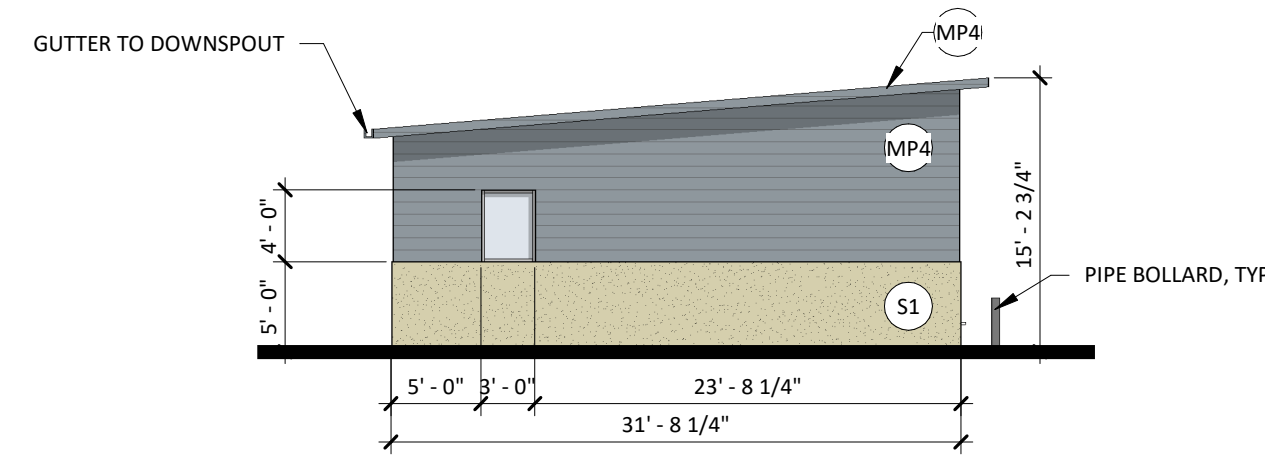
SITE PLAN

EXTERIOR ELEVATION MATERIAL LEGEND - FACILITY SHED

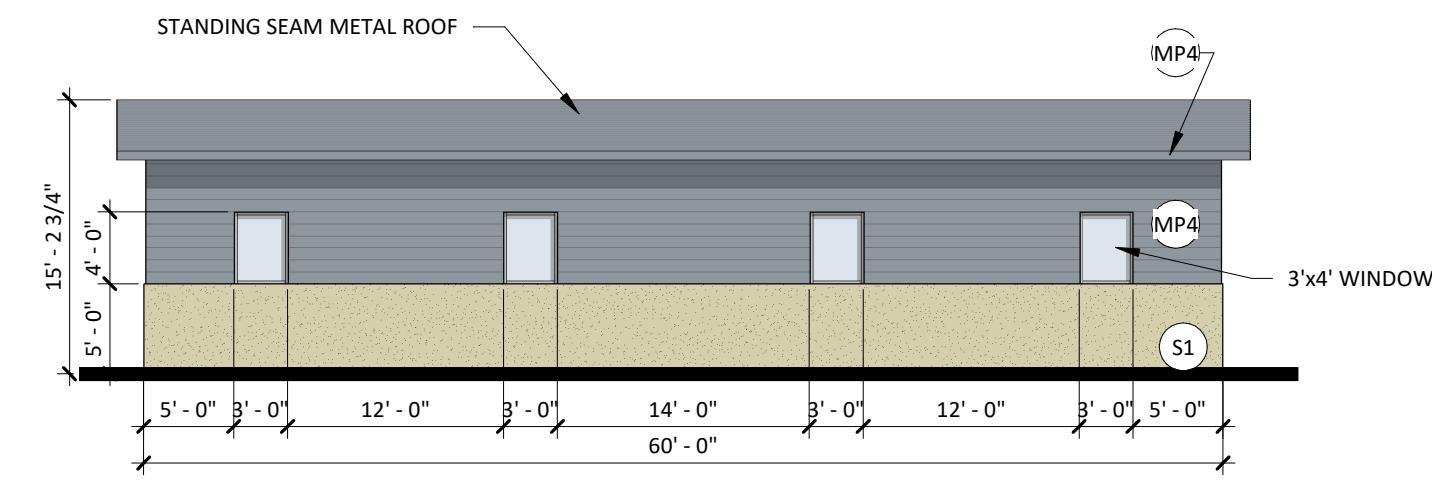
-  METAL PANEL, BERRIDGE 22 GA. H5-8, COLOR: ZINC GREY
-  3/4" NOMINAL STUCCO (S1), COLOR TO MATCH EXISTING
-  STEEL PAINTED, COLOR TO MATCH EXISTING (LIGHT GRAY)
-  3/4" NOMINAL STUCCO (S4), COLOR TO MATCH EXISTING



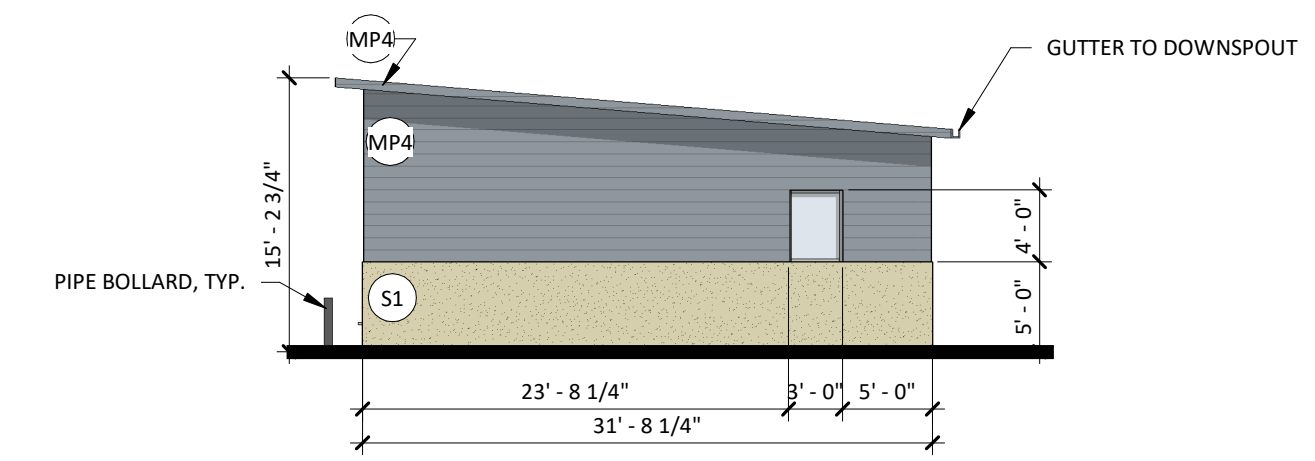
FACILITIES SHED - SDP NORTH ELEVATION
3/32" = 1'-0"



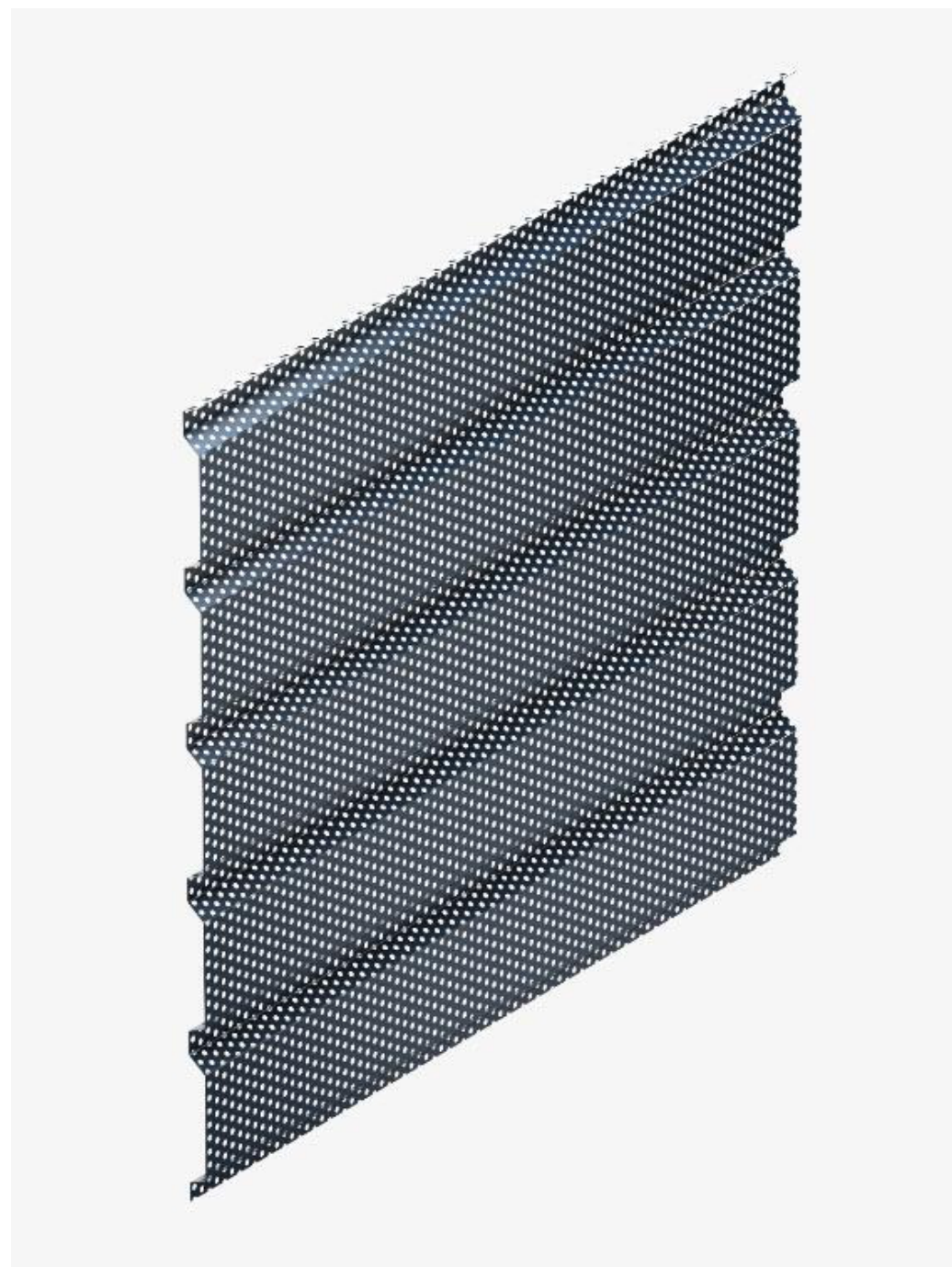
FACILITIES SHED - SDP EAST ELEVATION
3/32" = 1'-0"



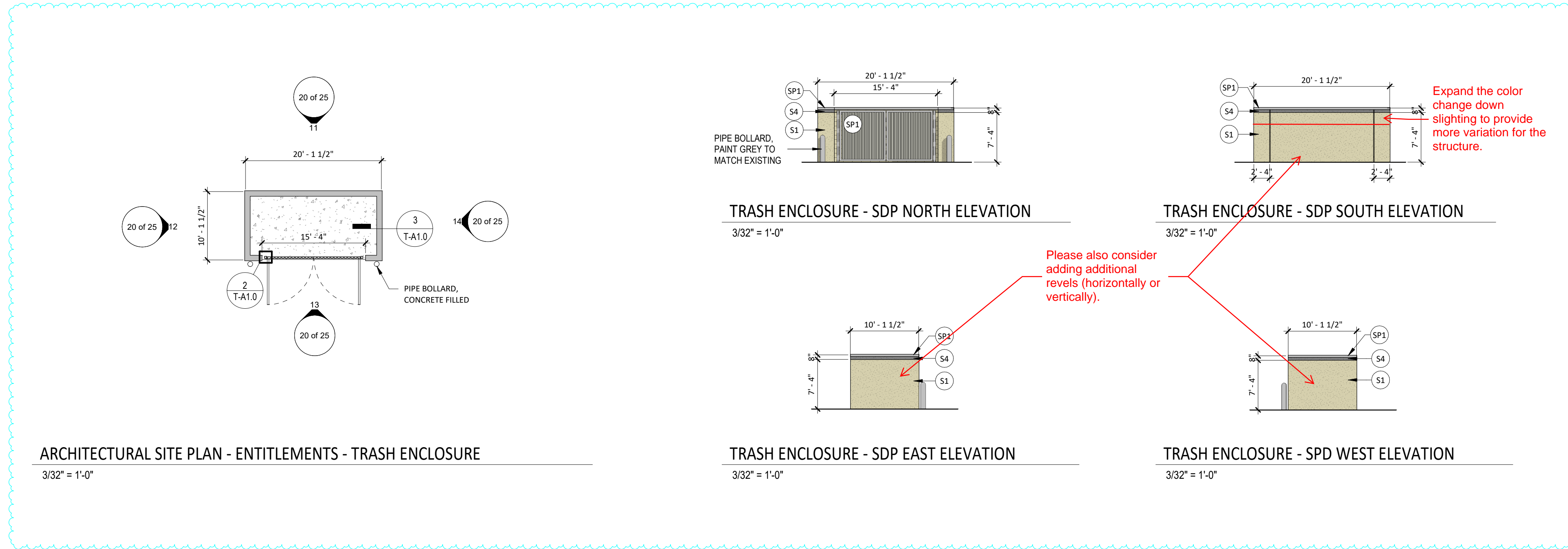
FACILITIES SHED - SDP SOUTH ELEVATION
3/32" = 1'-0"



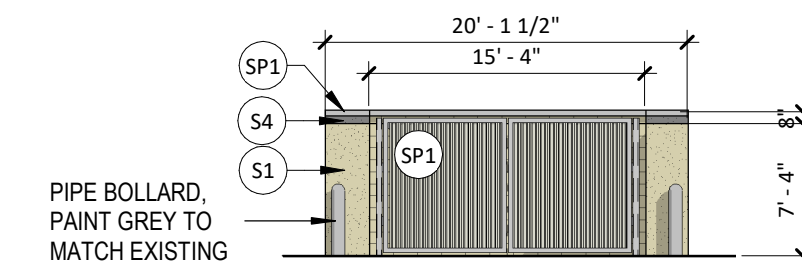
FACILITIES SHED - SDP WEST ELEVATION
3/32" = 1'-0"



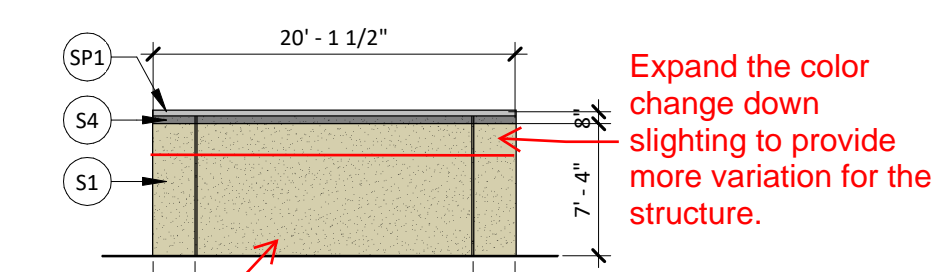
METAL PANEL 2 EXAMPLE IMAGE



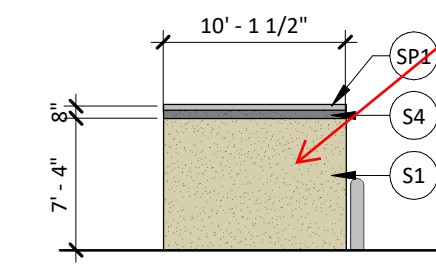
ARCHITECTURAL SITE PLAN - ENTITLEMENTS - TRASH ENCLOSURE
3/32" = 1'-0"



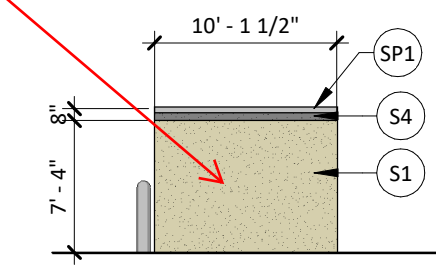
TRASH ENCLOSURE - SDP NORTH ELEVATION
3/32" = 1'-0"



TRASH ENCLOSURE - SDP SOUTH ELEVATION
3/32" = 1'-0"



TRASH ENCLOSURE - SDP EAST ELEVATION
3/32" = 1'-0"



TRASH ENCLOSURE - SDP WEST ELEVATION
3/32" = 1'-0"

Please also consider adding additional levels (horizontally or vertically).

Expand the color change down slightly to provide more variation for the structure.



BOULDER ASSOCIATES
1426 PEARL STREET, SUITE 300
BOULDER, COLORADO 80302
303.499.7795



ADVENTHEALTH
PARKER FACILITY
EXPANSION

CROWN POINT, 30TH AMDMT
LOT 1, TRACT A & B
PARKER, CO 80138

DESCRIPTION	DATE
1ST SUBMITTAL	06/03/2024
2ND SUBMITTAL	08/16/2024
3RD SUBMITTAL	10/10/2024
4TH SUBMITTAL	11/07/2024
1ST AMENDMENT	04/14/2025

DATE
12/20/2024

PARKER PROJECT NUMBER
SP24-062

SHEET TITLE
EXTERIOR
ELEVATIONS

DRAWING NUMBER
20 of 25