

# PARKER EXCHANGE BUILDING SITE DEVELOPMENT PLAN

LOCATED IN THE NORTHEAST QUARTER OF SECTION 22, TOWNSHIP 6 SOUTH, RANGE 66 WEST OF THE 6TH PRINCIPAL MERIDIAN  
CITY OF PARKER, COUNTY OF DOUGLAS, STATE OF COLORADO  
19590 E MAINSTREET



4 WEST ELEVATION  
SCALE: 1/8" = 1'-0"

3 EAST ELEVATION (PIKES PEAK DRIVE)  
SCALE: 1/8" = 1'-0"

No transparency table submitted as requested.

Staff requested a transparency table that shows compliance with the design guidelines. It has not been included in this submittal. Please provide for the street facing elevations. (East and South)



2 SOUTH ELEVATION (PILGRIMS PLACE)  
SCALE: 1/8" = 1'-0"

No transparency table submitted as requested.



1 NORTH ELEVATION (MAINSTREET)  
SCALE: 1/8" = 1'-0"

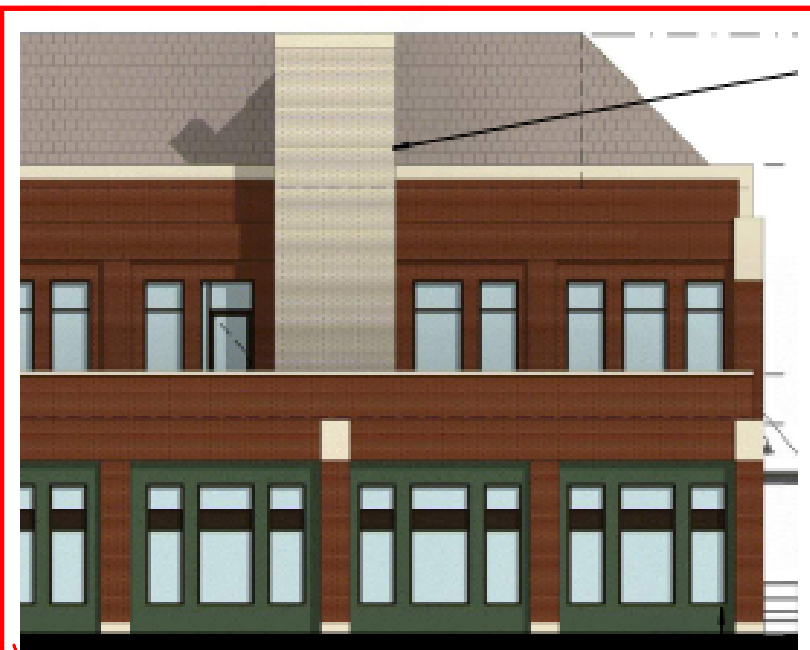
PREPARED BY:  
**Galloway**  
5500 Greenwood Plaza Blvd., Suite 200  
Greenwood Village, CO 80111  
303.770.8884 • galloway@gl.com



NEW BRICK MECHANICAL VENT SURROUND,  
HEBRON BRICK, CHAMPAGNE VELOUR



HEBRON BRICK COMPANY THIN BRICK,  
CHAMPAGNE VELOUR



As currently submitted, there are no changes to the approved plan in this area.

This is the currently approved elevation of this portion of the south elevation. Staff believes the currently proposed adjustment should show both the first and second floor as shown here or should be eliminated from the plan set.

As currently submitted, there are no changes to the approved plan in this area.



ENCLOSE EXISTING CAR DRIVE THRU WITH NEW BRICK FACADE ENCLOSURE WALL AND STOREFRONT GLAZING INFILL PANELS

