

COMPARK VILLAGE SOUTH
F1 AMD 2 - MULTIFAMILY
SITE PLAN

LOT 2, COMPARK VILLAGE FILING NO. 1, AMEND NO. 2
SOUTH HALF SECTION 6, TOWNSHIP 6 SOUTH, RANGE 66 WEST OF THE 6TH PRINCIPAL MERIDIAN
TOWN OF PARKER, COUNTY OF DOUGLAS, STATE OF COLORADO

PROJECT NUMBER
210512

DRAWN BY

DATE
02/21/2025



Architecture + Planning
820 16th Street, Suite 500
Denver, CO 80202
kitgy.com
303.825.6400



3 BUILDING A - SIDE ELEVATION
1/16" = 1'-0"

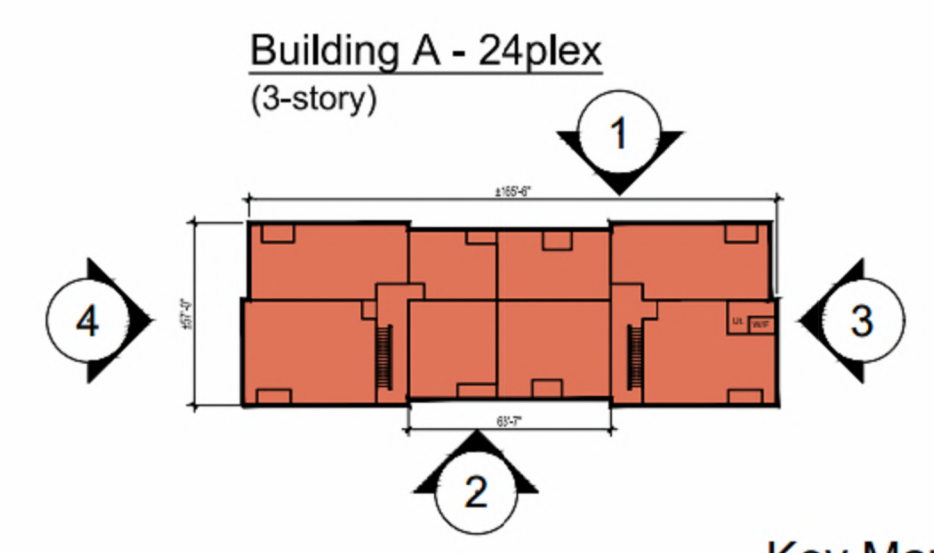
4 BUILDING A - SIDE ELEVATION
1/16" = 1'-0"



2 BUILDING A - REAR ELEVATION
1/16" = 1'-0"



1 BUILDING A - FRONT ELEVATION
1/16" = 1'-0"



#	KEYNOTES - SIP
1	BRICK - RUNNING - COLOR: IRONWORKS
2	BRICK - RUNNING - COLOR: NIGHTFALL
3	FIBER CEMENT PANELING - COLOR: SW 7632 MODERN GRAY
4	FIBER CEMENT PANELING - COLOR: SW 7631 CITY LOFT
5	FIBER CEMENT PANELING - COLOR: SW 7069 IRON ORE
6	FIBER CEMENT PANELING - COLOR: SW 7067 CITYSCAPE
7	METAL PANEL - COLOR: SW 7515 HOMESTEAD BROWN
8	METAL PANEL - COLOR: SW 6254 LAZY GRAY
9	BOARD AND BATTEN - COLOR: SW 6237 DARK NIGHT
10	BOARD AND BATTEN - COLOR: SW 7631 CITY LOFT
11	VERTICAL SIDING - COLOR: SW 7631 CITY LOFT
12	VERTICAL SIDING - COLOR: SW 6237 DARK NIGHT
13	VERTICAL SIDING - COLOR: SW 7055 ENDURING BRONZE
14	VERTICAL SIDING - COLOR: SW 9578 RESTORATION
15	VERTICAL SIDING - COLOR: WOODTONE SUMMER WHEAT
16	VINYL WINDOW
18	METAL RAILING
19a	MECHANICAL SCREEN - ~8% OPEN HORIZONTAL TREX PLANKS
20	STOREFRONT
21	COLUMN
22	ASPHALT SHINGLE ROOFING
23	BOARD AND BATTEN - COLOR: SW 7069 IRON ORE
24	STONE - EL Dorado STONE - LEDGECUT33 WHITECAP
25	EXTERIOR LIGHT FIXTURE
26	HORIZONTAL SIDING - COLOR: SW 9578 RESTORATION
27	HORIZONTAL SIDING - COLOR: SW 7632 MODERN GRAY
28	HORIZONTAL SIDING - COLOR: SW 7631 CITY LOFT
29	HORIZONTAL SIDING - COLOR: SW 6237 DARK NIGHT
30	HORIZONTAL SIDING - COLOR: SW 7055 ENDURING BRONZE
32	DOWNSPOUT
33	LIGHT BRICK COLOR MATCH PAINT
34	DARK BRICK COLOR MATCH PAINT

NOTES:
1. SEE MATERIAL BOARDS FOR MORE INFORMATION.
2. SEE SITE PLAN FOR DIMENSIONS BETWEEN ENTRIES.
3. GROUND FLOOR TRANSPARENCY TO BE MIN. OF 25% MEASURED AS A PERCENTAGE OF GLAZING AT THE BASE OF THE BUILDING
4. UPPER FLOOR TRANSPARENCY TO BE MIN. OF 15% GLAZING MEASURED AS A PERCENTAGE OF GLAZING ON THE MIDDLE OF THE BUILDING.
5. TRIM AROUND WINDOWS SHALL BE A MINIMUM OF THREE AND ONE-HALF (3 1/2) INCHES WIDE, AND TRIM AROUND DOORS SHOULD BE A MINIMUM OF TWO (2) INCHES WIDE.
6. EXTERIOR CYLINDRICAL WALL SCONCE LIGHT FIXTURES HAVE AN OUTPUT OF 800 LUMENS AND ARE THEREFORE NOT SHOWN ON THE PHOTOMETRIC.

PREPARED FOR CENTURY COMMUNITIES



PROJECT
COMPARK VILLAGE SOUTH

TOWN OF PARKER, COUNTY OF DOUGLAS, COLORADO 80134

SHEET TITLE
BUILDING A ELEVATIONS (BLDG 8)

SHEET NUMBER
53 (B8)

**COMPARK VILLAGE SOUTH
F1 AMD 2 - MULTIFAMILY
SITE PLAN**
LOT 2, COMPARK VILLAGE FILING NO. 1, AMEND NO. 2
SOUTH HALF SECTION 6, TOWNSHIP 6 SOUTH, RANGE 66 WEST OF THE 6TH PRINCIPAL MERIDIAN
TOWN OF PARKER, COUNTY OF DOUGLAS, STATE OF COLORADO

PROJECT NUMBER
210512

DRAWN BY

DATE
02/21/2025



KEY MAP - n.t.s
BUILDING A



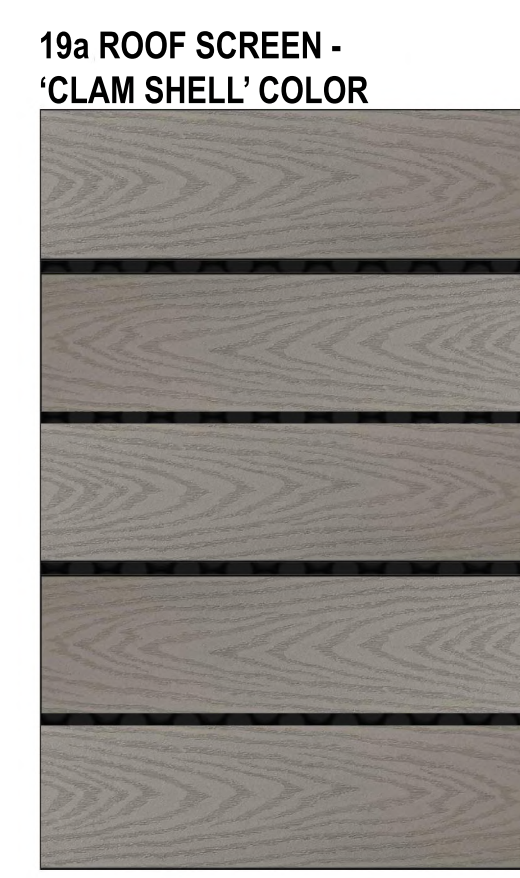
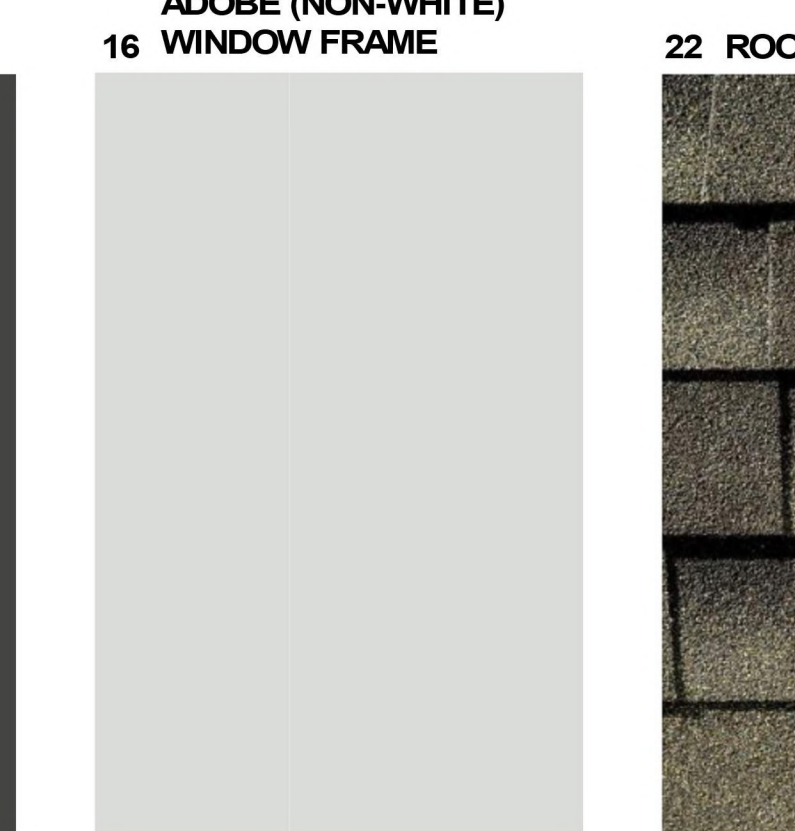
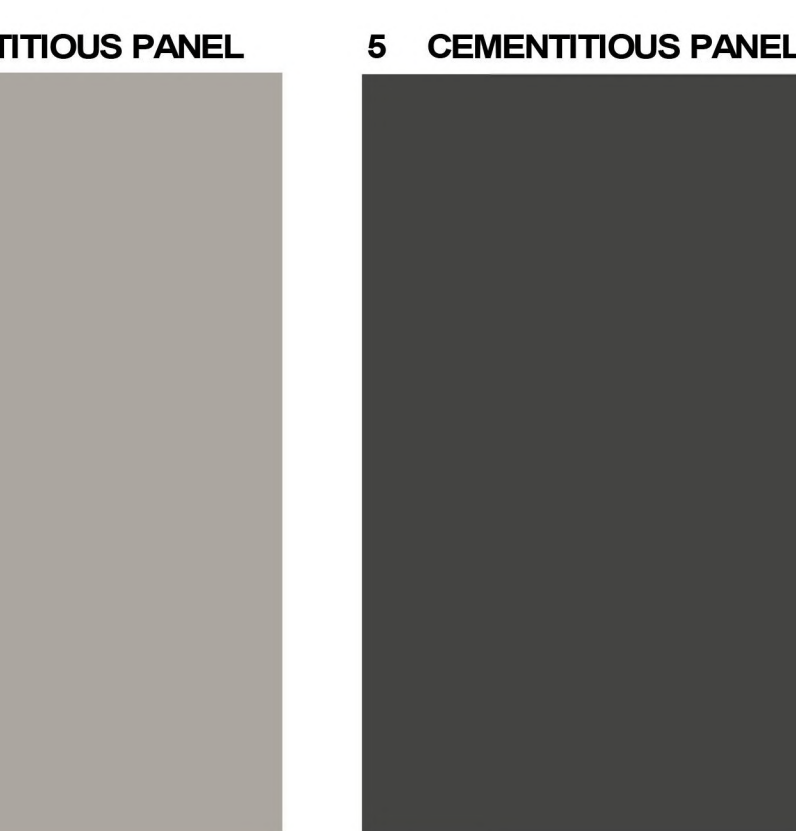
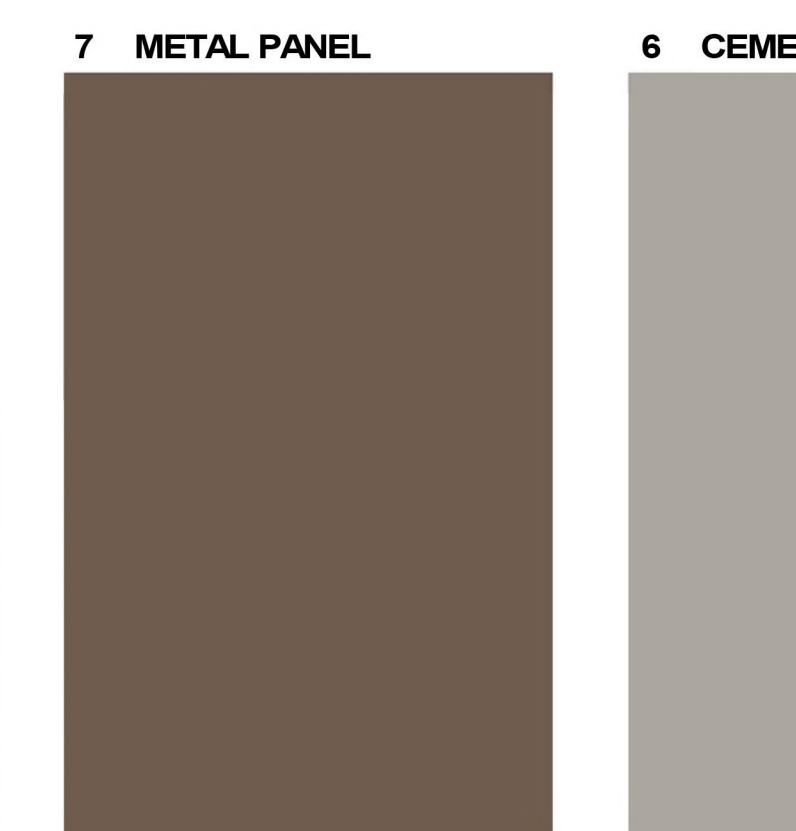
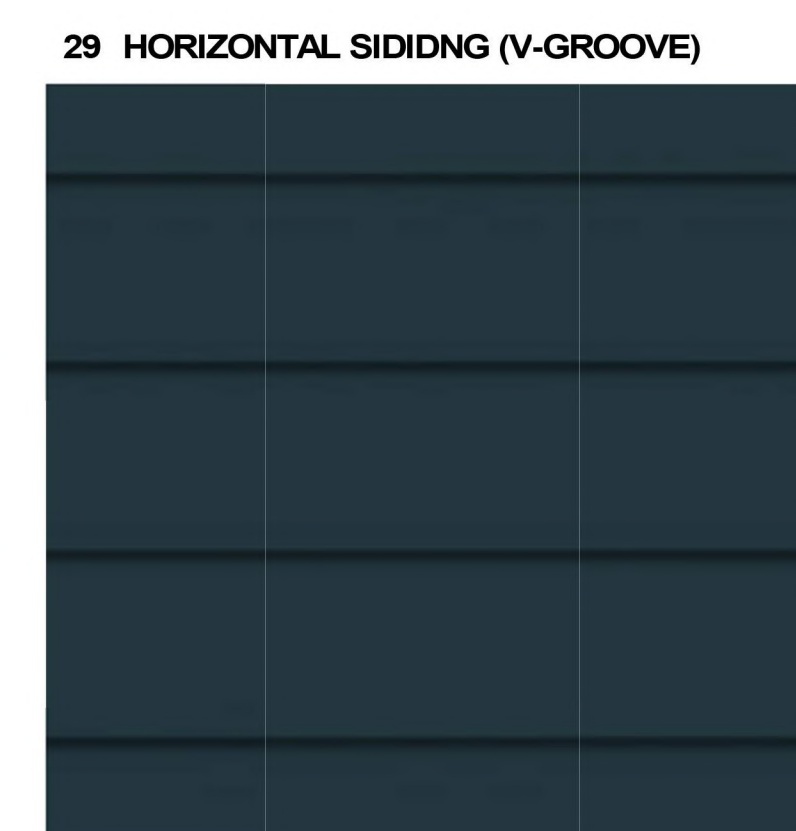
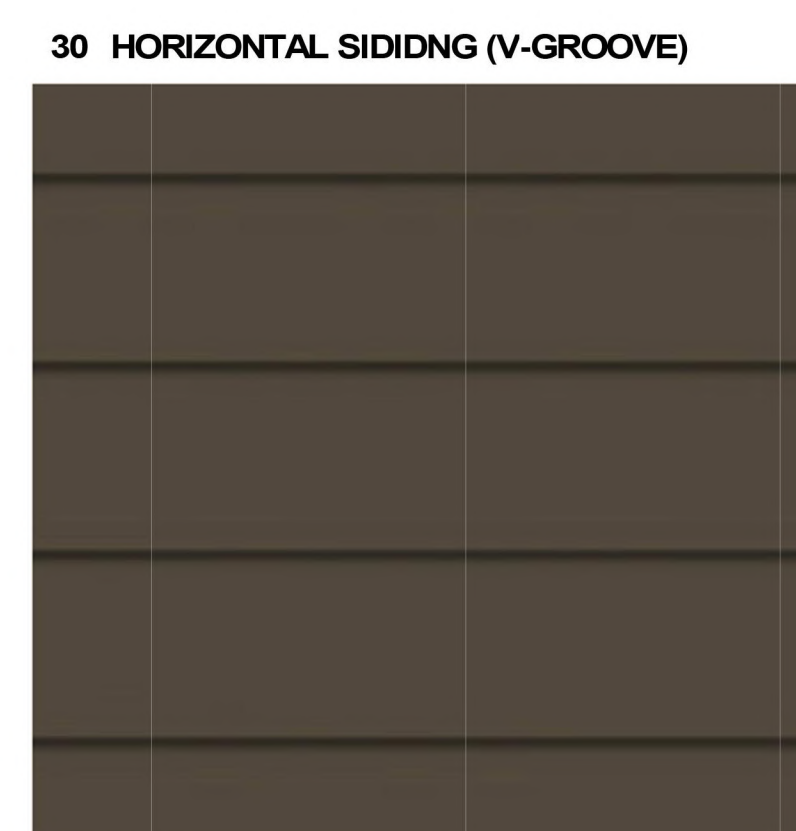
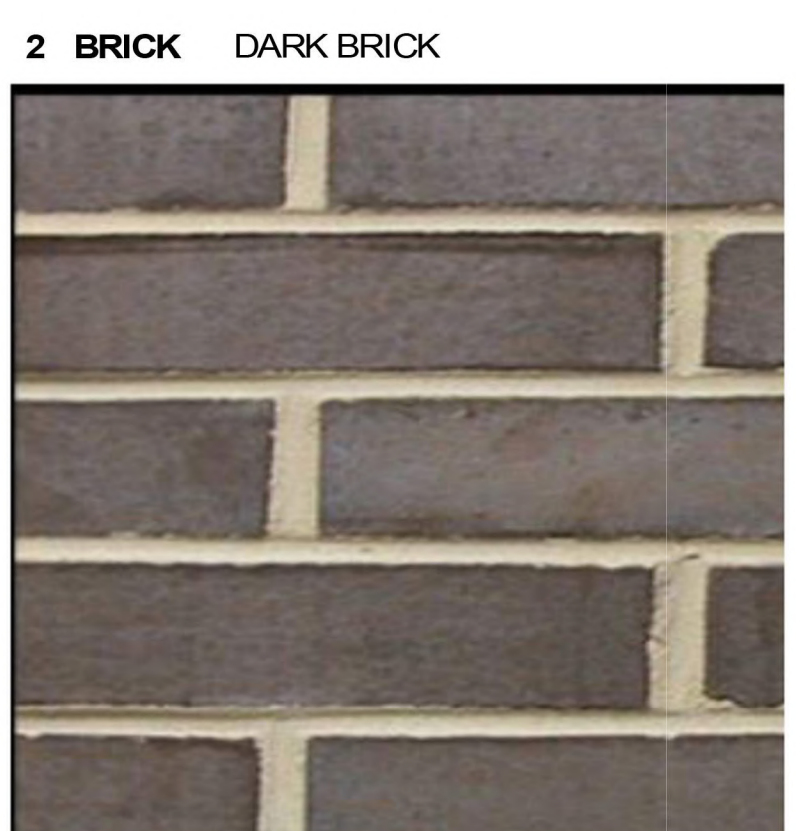
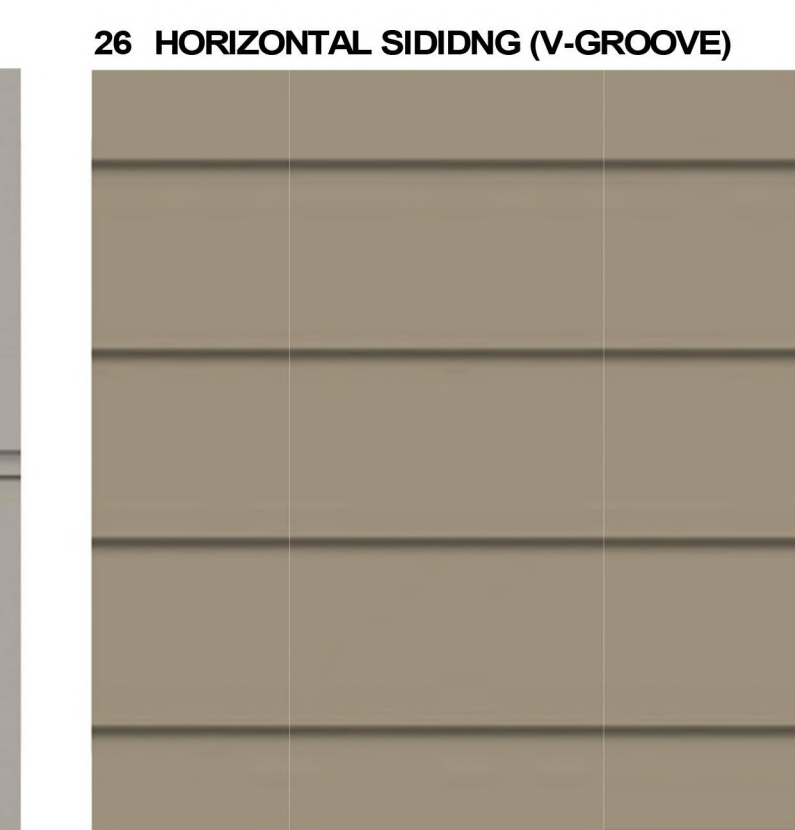
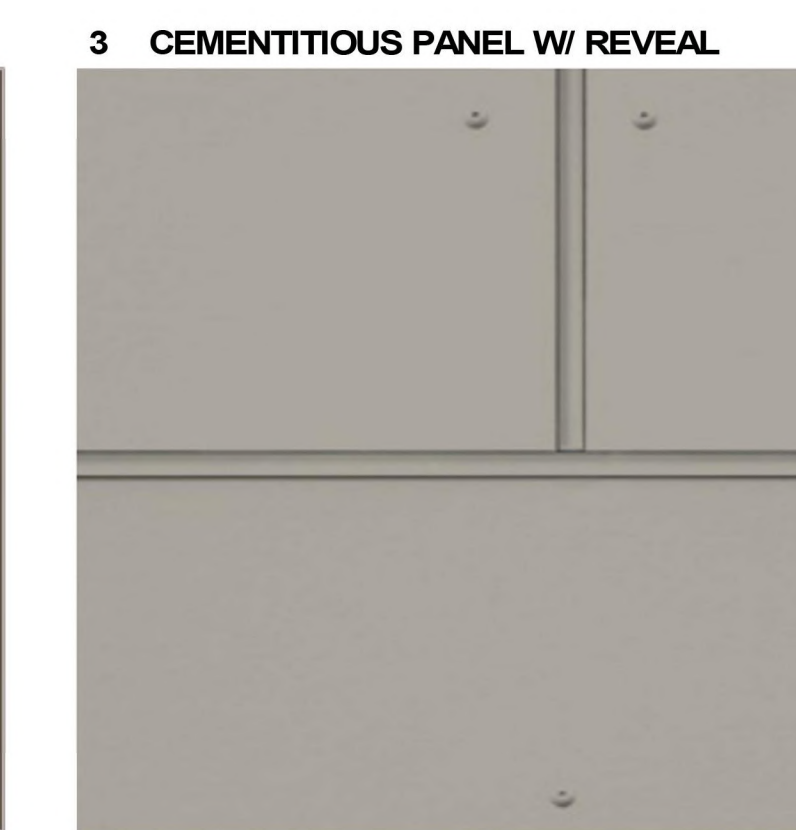
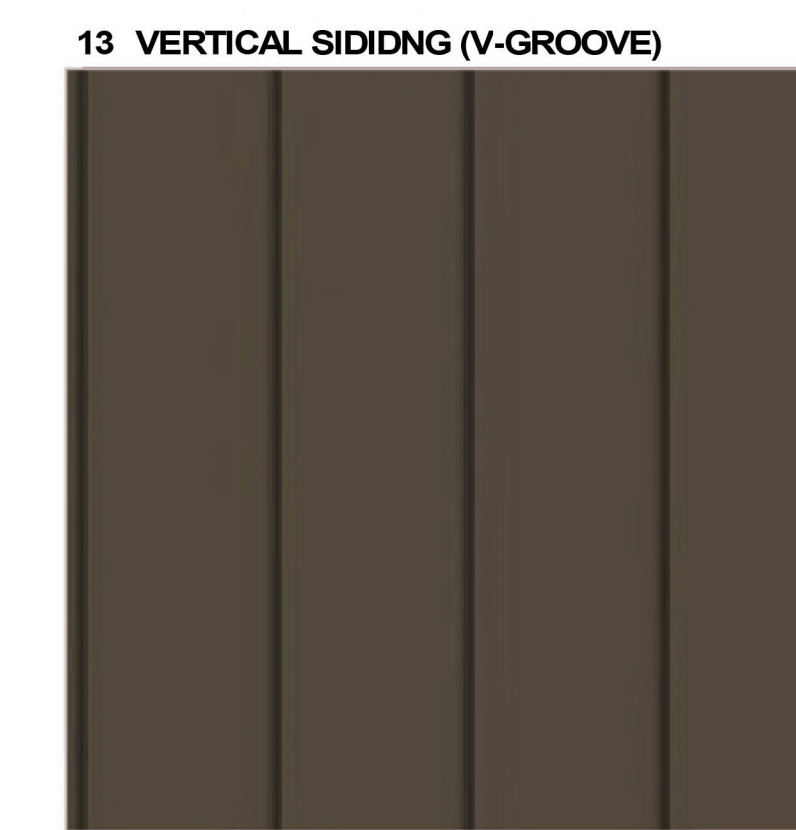
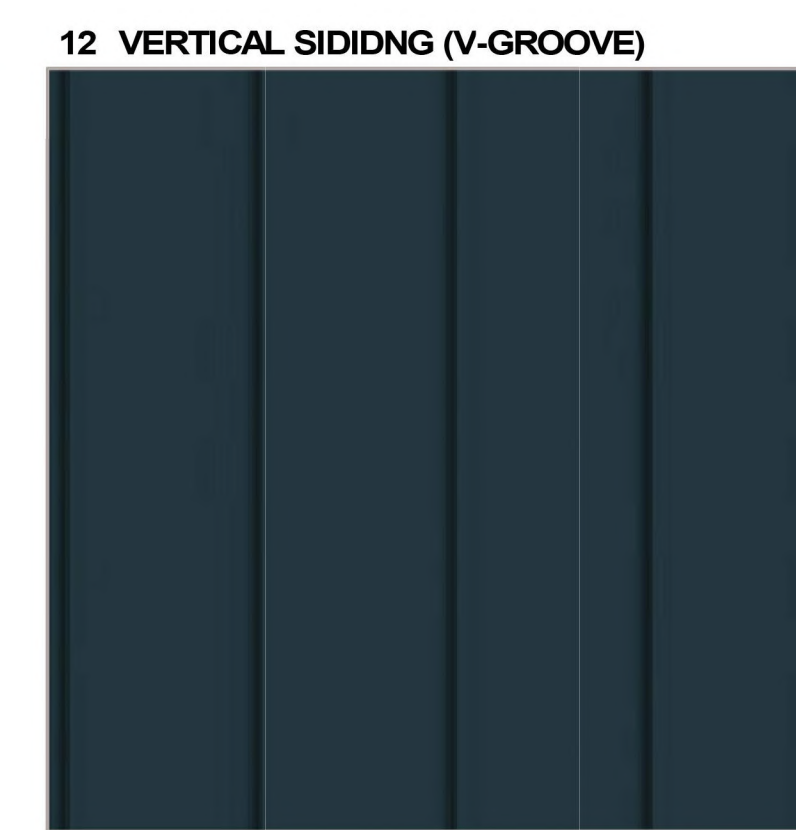
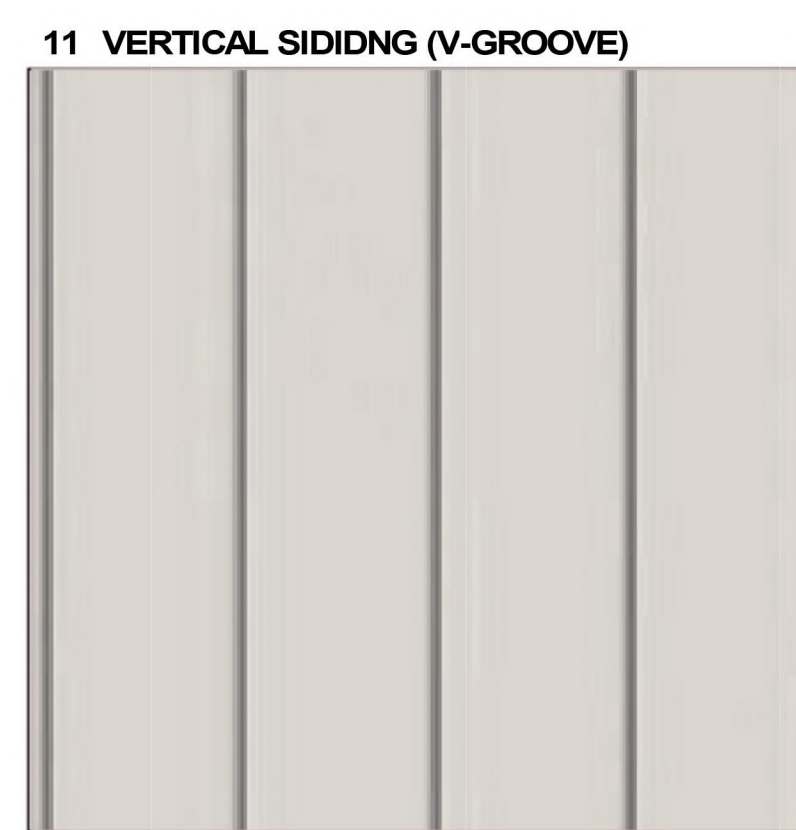
Architecture + Planning
820 16th Street, Suite 500
Denver, CO 80202
ktgy.com
303.825.6400



FRONT ELEVATION
Note: Trim around windows shall be minimum of three and one-half (3-1/2) inches wide, and trim around doors shall be a minimum of (2) inches wide.

**33 LIGHT BRICK
COLOR MATCH PAINT**

Custom Sherwin Williams			
CCE x Colorant	32	64	128
Blue	15	-	1
Maroon	32	-	-
Deep Gold	28	-	1



PREPARED FOR CENTURY COMMUNITIES



PROJECT
COMPARK VILLAGE SOUTH

TOWN OF PARKER,
COUNTY OF DOUGLAS, COLORADO
80134

SHEET TITLE
BLDG A MATERIAL BOARD (BLDG 8)

SHEET NUMBER
54 (B8)