

COMPARK VILLAGE SOUTH  
F1 AMD 2 - MULTIFAMILY  
SITE PLAN

LOT 2, COMPARK VILLAGE FILING NO. 1, AMEND NO. 2  
SOUTH HALF SECTION 6, TOWNSHIP 6 SOUTH, RANGE 66 WEST OF THE 6TH PRINCIPAL MERIDIAN  
TOWN OF PARKER, COUNTY OF DOUGLAS, STATE OF COLORADO

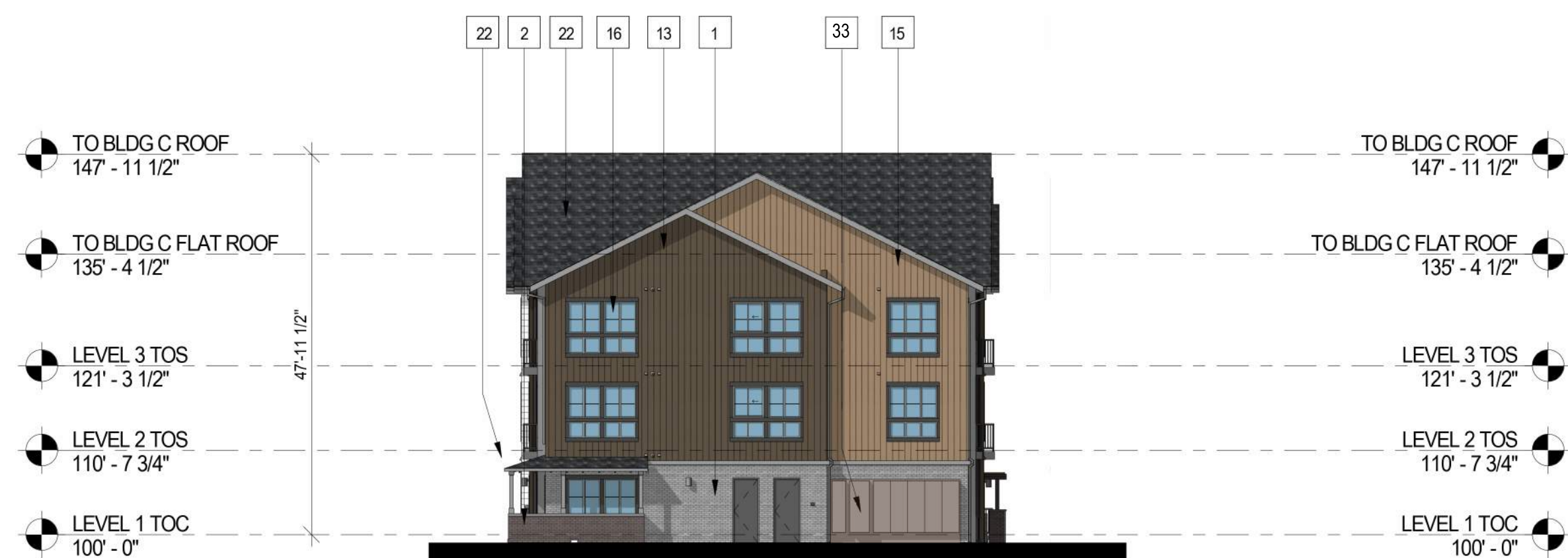
PROJECT NUMBER  
210512

DRAWN BY

DATE  
02/21/2025



Architecture + Planning  
820 16th Street, Suite 500  
Denver, CO 80202  
ktgy.com  
303.825.6400



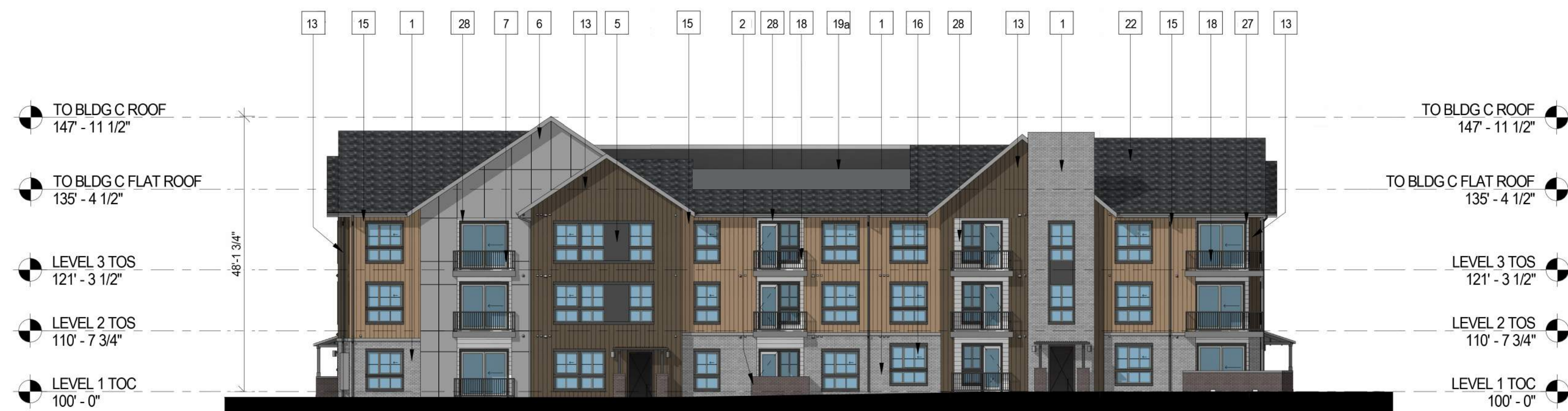
3 BUILDING C - SIDE ELEVATION  
1/16" = 1'-0"



4 BUILDING C - SIDE ELEVATION  
1/16" = 1'-0"

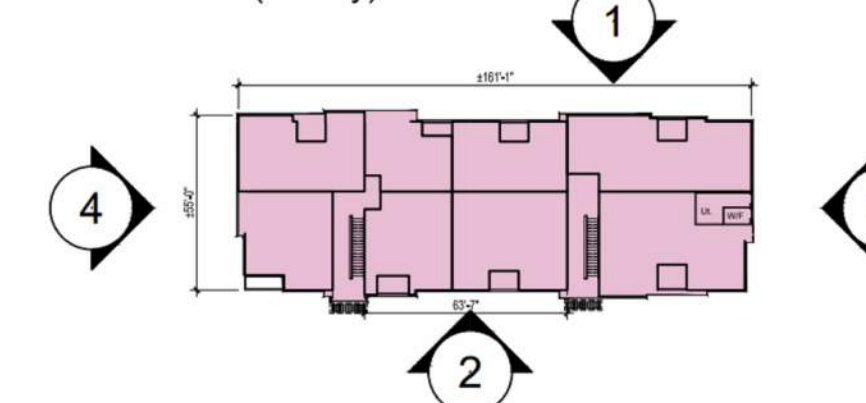


2 BUILDING C - REAR ELEVATION  
1/16" = 1'-0"



1 BUILDING C - FRONT ELEVATION  
1/16" = 1'-0"

Building C - 24plex w/ Wrap Porches  
(3-story)



Key Map n.t.s

#	KEYNOTES - SIP
1	BRICK - RUNNING - COLOR: IRONWORKS
2	BRICK - RUNNING - COLOR: NIGHTFALL
3	FIBER CEMENT PANELING - COLOR: SW 7632 MODERN GRAY
4	FIBER CEMENT PANELING - COLOR: SW 7631 CITY LOFT
5	FIBER CEMENT PANELING - COLOR: SW 7069 IRON ORE
6	FIBER CEMENT PANELING - COLOR: SW 7067 CITYSCAPE
7	METAL PANEL - COLOR: SW 7515 HOMESTEAD BROWN
8	METAL PANEL - COLOR: SW 6254 LAZY GRAY
9	BOARD AND BATTEN - COLOR: SW 6237 DARK NIGHT
10	BOARD AND BATTEN - COLOR: SW 7631 CITY LOFT
11	VERTICAL SIDING - COLOR: SW 7631 CITY LOFT
12	VERTICAL SIDING - COLOR: SW 6237 DARK NIGHT
13	VERTICAL SIDING - COLOR: SW 7055 ENDURING BRONZE
14	VERTICAL SIDING - COLOR: SW 9578 RESTORATION
15	VERTICAL SIDING - COLOR: WOODSTONE SUMMER WHEAT
16	VINYL WINDOW
18	METAL RAILING
19a	MECHANICAL SCREEN - ~8% OPEN HORIZONTAL TREX PLANKS
20	STOREFRONT
21	COLUMN
22	ASPHALT SHINGLE ROOFING
23	BOARD AND BATTEN - COLOR: SW 7069 IRON ORE
24	STONE - ELDOURADO STONE - LEDGECUT33 WHITECAP
25	EXTERIOR LIGHT FIXTURE
26	HORIZONTAL SIDING - COLOR: SW 9578 RESTORATION
27	HORIZONTAL SIDING - COLOR: SW 7632 MODERN GRAY
28	HORIZONTAL SIDING - COLOR: SW 7631 CITY LOFT
29	HORIZONTAL SIDING - COLOR: SW 6237 DARK NIGHT
30	HORIZONTAL SIDING - COLOR: SW 7055 ENDURING BRONZE
32	DOWNSPOUT
33	LIGHT BRICK COLOR MATCH PAINT
34	DARK BRICK COLOR MATCH PAINT

NOTES:  
1. SEE MATERIAL BOARDS FOR MORE INFORMATION.  
2. SEE SITE PLAN FOR DIMENSIONS BETWEEN ENTRIES.  
3. GROUND FLOOR TRANSPARENCY TO BE MIN. OF 25% MEASURED AS A PERCENTAGE OF GLAZING AT THE BASE OF THE BUILDING  
4. UPPER FLOOR TRANSPARENCY TO BE MIN. OF 15% GLAZING MEASURED AS A PERCENTAGE OF GLAZING ON THE MIDDLE OF THE BUILDING.  
5. TRIM AROUND WINDOWS SHALL BE A MINIMUM OF THREE AND ONE-HALF (3 1/2) INCHES WIDE, AND TRIM AROUND DOORS SHOULD BE A MINIMUM OF TWO (2) INCHES WIDE.  
6. EXTERIOR CYLINDRICAL WALL SCONCE LIGHT FIXTURES HAVE AN OUTPUT OF 800 LUMENS AND ARE THEREFORE NOT SHOWN ON THE PHOTOMETRIC.

PREPARED FOR CENTURY COMMUNITIES



PROJECT

COMPARK VILLAGE SOUTH

TOWN OF PARKER, COUNTY OF DOUGLAS, COLORADO 80134

SHEET TITLE

BUILDING C ELEVATIONS (BLDG 10)

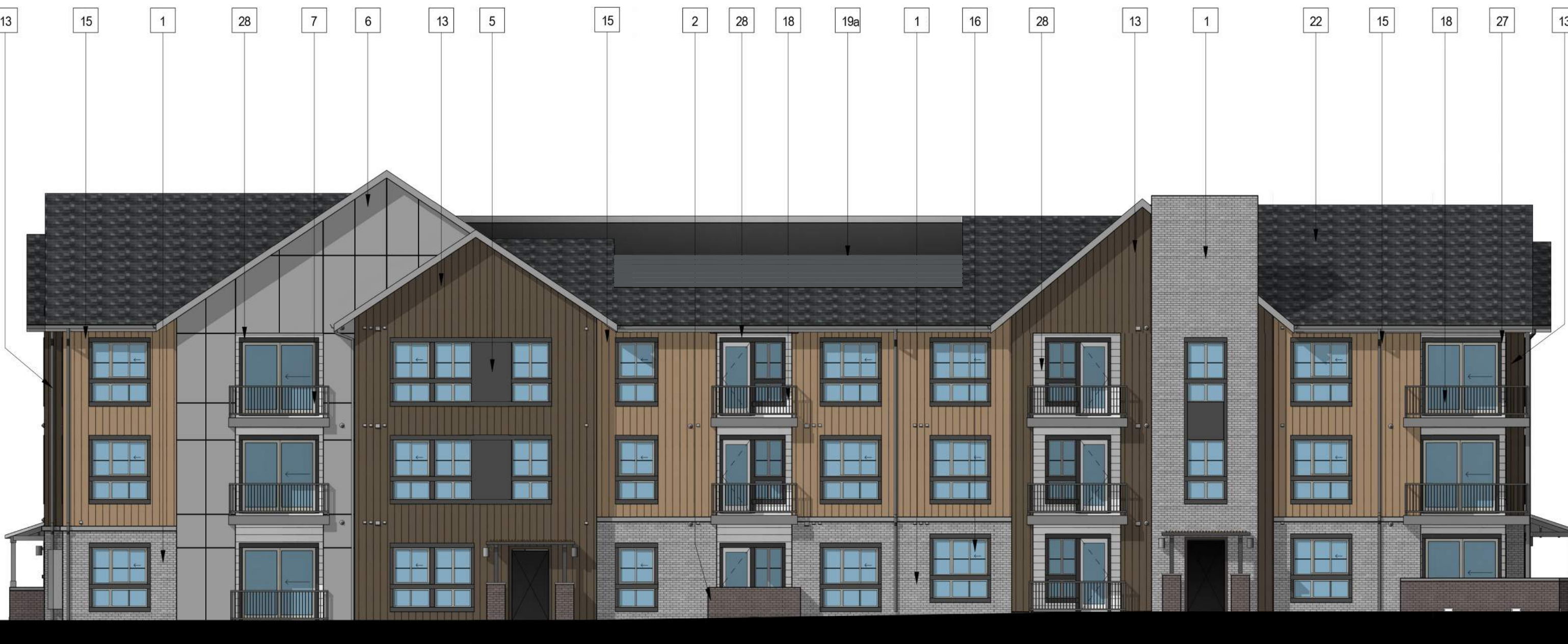
SHEET NUMBER

57 (B10)

COMPARK VILLAGE SOUTH  
 F1 AMD 2 - MULTIFAMILY  
 SITE PLAN  
 LOT 2, COMPARK VILLAGE FILING NO. 1, AMEND NO. 2  
 SOUTH HALF SECTION 6, TOWNSHIP 6 SOUTH, RANGE 66 WEST OF THE 6TH PRINCIPAL MERIDIAN  
 TOWN OF PARKER, COUNTY OF DOUGLAS, STATE OF COLORADO



KEY MAP - n.t.s  
**BUILDING C**



**FRONT ELEVATION**

Note: Trim around windows shall be minimum of three and one-half (3-1/2) inches wide, and trim around doors shall be a minimum of (2) inches wide.

**1 BRICK** LIGHT BRICK



**15 VERTICAL SIDING (WOOD TONE)**



**13 VERTICAL SIDING (V-GROOVE)**



**6 CEMENTITIOUS PANEL W/ REVEAL**



**4 CEMENTITIOUS PANEL W/ REVEAL**



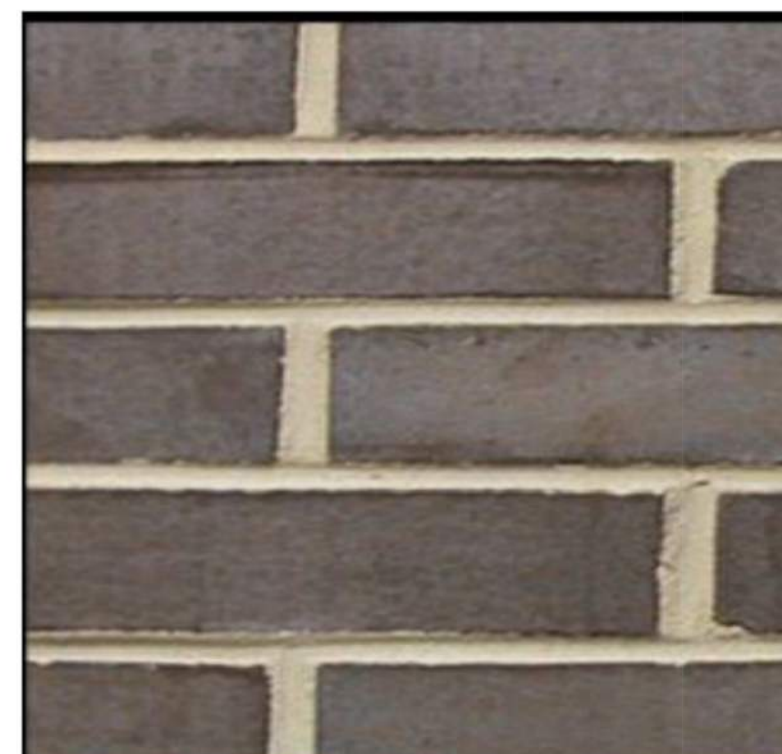
**28 HORIZONTAL SIDING (V-GROOVE)**



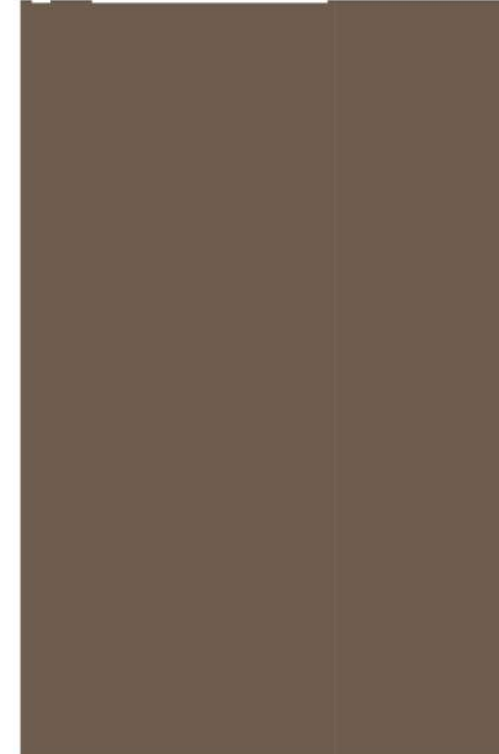
**27 HORIZONTAL SIDING (V-GROOVE)**



**2 BRICK** DARK BRICK



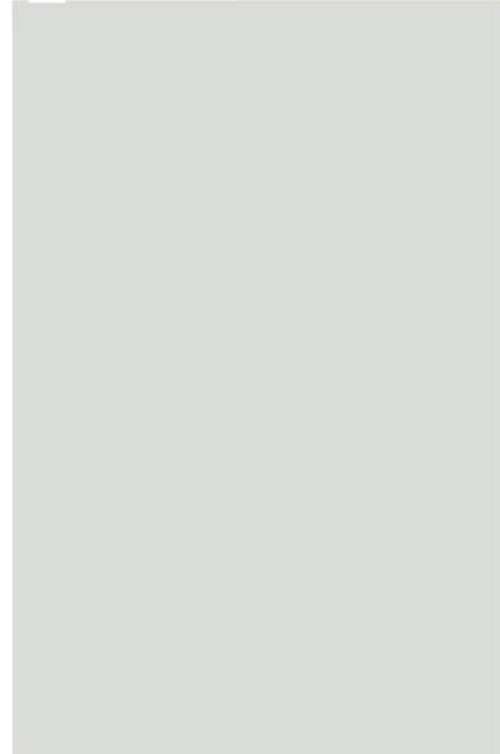
**7 METAL PANEL**



**5 CEMENTITIOUS PANEL**



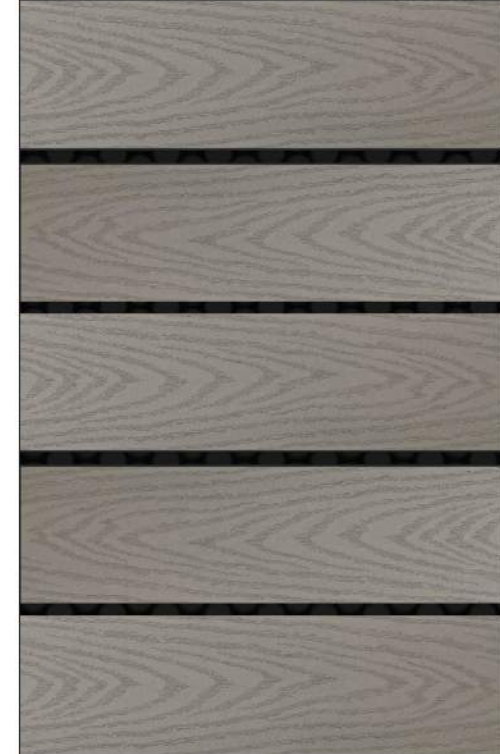
**ADOBE (NON-WHITE)  
 16 WINDOW FRAME**



**22 ROOF**



**19a ROOF SCREEN -  
 'CLAM SHELL' COLOR**



**33 LIGHT BRICK  
 COLOR MATCH PAINT**



Custom Sherwin Williams			
GCE x Colorant	32	64	128
Blue	18	-	1
Maroon	32	-	-
Deep Gold	28	-	1

PROJECT NUMBER  
 210512

DRAWN BY

DATE  
 02/21/2025



**Architecture + Planning**  
 820 16th Street, Suite 500  
 Denver, CO 80202  
 ktgy.com  
 303.825.6400

PREPARED FOR CENTURY  
 COMMUNITIES



PROJECT

**COMPARK  
 VILLAGE  
 SOUTH**

TOWN OF PARKER,  
 COUNTY  
 OF DOUGLAS, COLORADO  
 80134

SHEET TITLE  
**BLDG C  
 MATERIAL  
 BOARD  
 (BLDG 10)**

SHEET NUMBER

**58 (B10)**