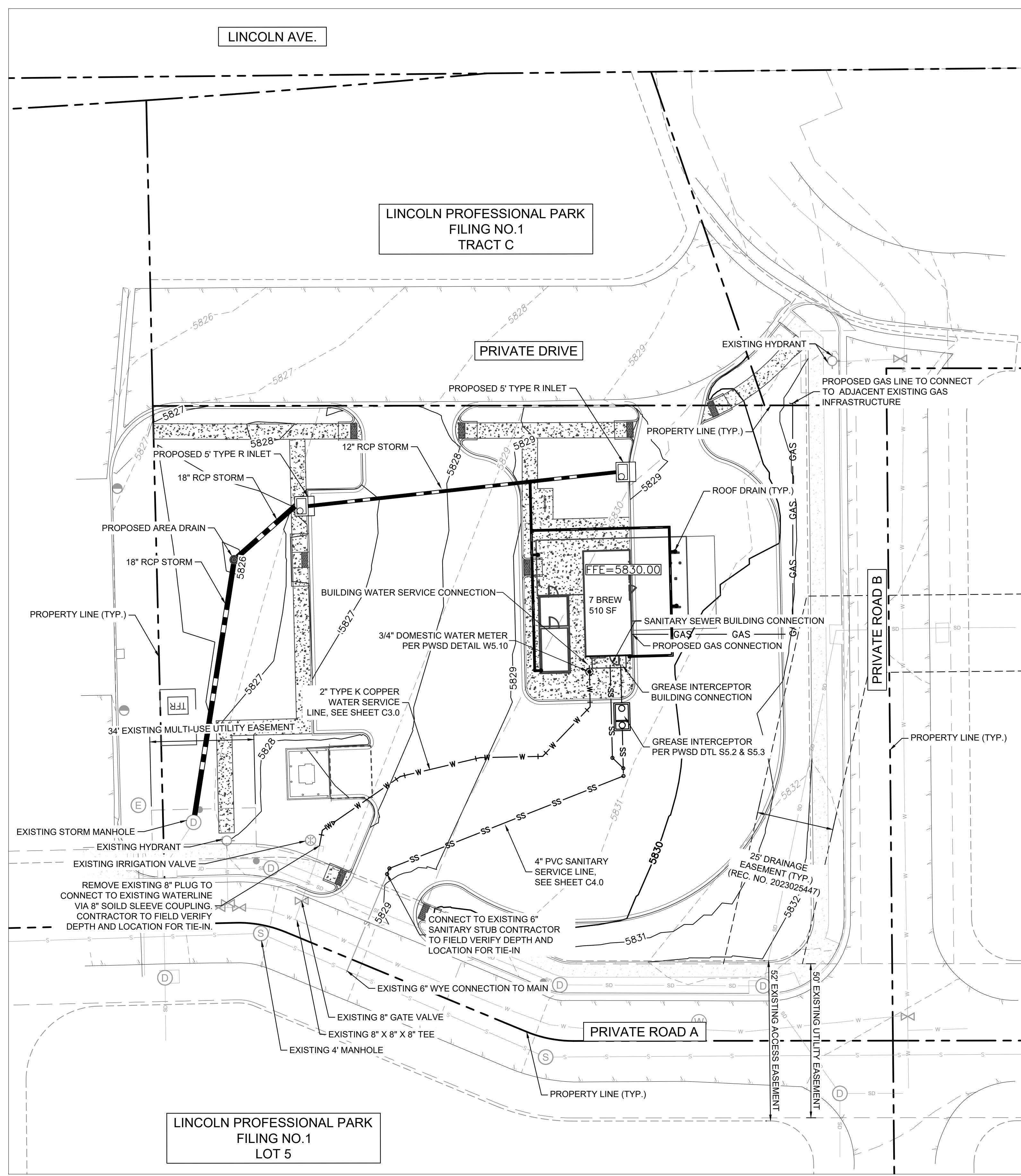


THIS DOCUMENT, TOGETHER WITH THE CONCEPTS AND DESIGNS PRESENTED HEREIN, IS AN INSTRUMENT OF SERVICE. IT IS INTENDED ONLY FOR THE SPECIFIC PURPOSE AND CLIENT FOR WHICH IT WAS PREPARED. REUSE OF AND IMPROPER RELIANCE ON THIS DOCUMENT WITHOUT WRITTEN AUTHORIZATION AND ADAPTATION BY KIMLEY-HORN AND ASSOCIATES, INC. SHALL BE WITHOUT LIABILITY TO KIMLEY-HORN AND ASSOCIATES, INC.

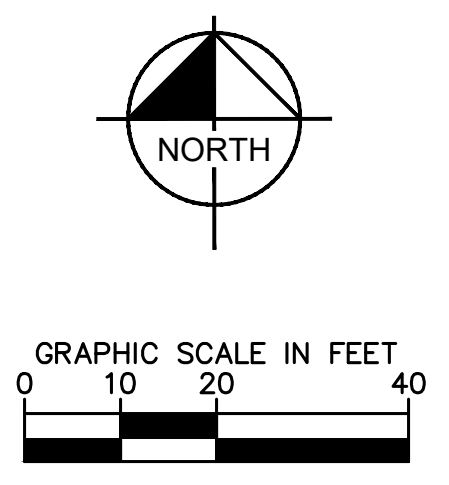


LEGEND

PROPERTY LINE	---
EASEMENT	---
BUILDING OUTLINE	---
PROPOSED GAS LINE	— GAS — GAS
PROPOSED SANITARY SEWER LINE	— S — S
PROPOSED WATER LINE	— W — W
PROPOSED STORM LINE	— SD — SD
EXISTING GAS LINE	— GAS — GAS
EXISTING SANITARY SEWER LINE	— S — S
EXISTING WATER LINE	— W — W
EXISTING STORM LINE	— SD — SD
PROPOSED CONTOUR	100 — 99
EXISTING CONTOUR	100 — 99
EXISTING SANITARY SEWER MANHOLE	⊙
EXISTING STORM MANHOLE	⊙
EXISTING FIRE HYDRANT	⊙
EXISTING SEWER CLEANOUT	⊙
EXISTING WATER VALVE	⊙
EXISTING STORM DRAIN STRUCTURE	⊙
PROPOSED WATER BENDS	⌋
PROPOSED STORM CURB INLET	⊕
PROPOSED STORM AREA INLET	⊕
PROPOSED WATER METER	⊕
PROPOSED SANITARY SEWER CLEANOUT	⊕

NOTES:

1. UTILITY CONNECTIONS TERMINATE 5' FROM BUILDING ENVELOPE. SEE ARCHITECT AND MEP PLANS FOR CONTINUATION.
2. ALL DIMENSIONS ARE SHOWN FROM CENTER OF PIPE TO CENTER OF PIPE UNLESS OTHERWISE NOTED.
3. THE CONTRACTOR MUST FIELD DETERMINE THE LOCATION AND DEPTH OF ALL UTILITIES PRIOR TO ANY CONSTRUCTION. REPORT DISCREPANCIES AND POTENTIAL CONFLICTS WITH PROPOSED UTILITIES TO ENGINEER PRIOR TO INSTALLATION OF ANY PIPING.
4. CONTRACTOR TO CONFIRM ALL UTILITY CROSSINGS PRIOR TO CONSTRUCTION.
5. ALL ELECTRIC, TELEPHONE, AND GAS EXTENSIONS INCLUDING SERVICES LINES SHALL BE CONSTRUCTED TO THE APPROPRIATE UTILITY COMPANY SPECIFICATIONS. ALL UTILITY DISCONNECTIONS SHALL BE COORDINATED WITH THE DESIGNATED UTILITY COMPANIES.
6. CONSTRUCTION SHALL NOT START ON ANY PUBLIC UTILITY SYSTEM UNTIL WRITTEN APPROVAL HAS BEEN RECEIVED BY THE ENGINEER FROM THE APPROPRIATE GOVERNING AUTHORITY AND CONTRACTOR HAS BEEN NOTIFIED BY THE ENGINEER.



NO.	REVISION	BY	DATE	APPR

Kimley»Horn
 © 2025 KIMLEY-HORN AND ASSOCIATES, INC.
 6200 South Syracuse Way, Suite 300
 Greenwood, Colorado 80111 (303) 228-2300

DESIGNED BY: MMR
 DRAWN BY: KNP
 CHECKED BY: KEW
 DATE: 8/4/25

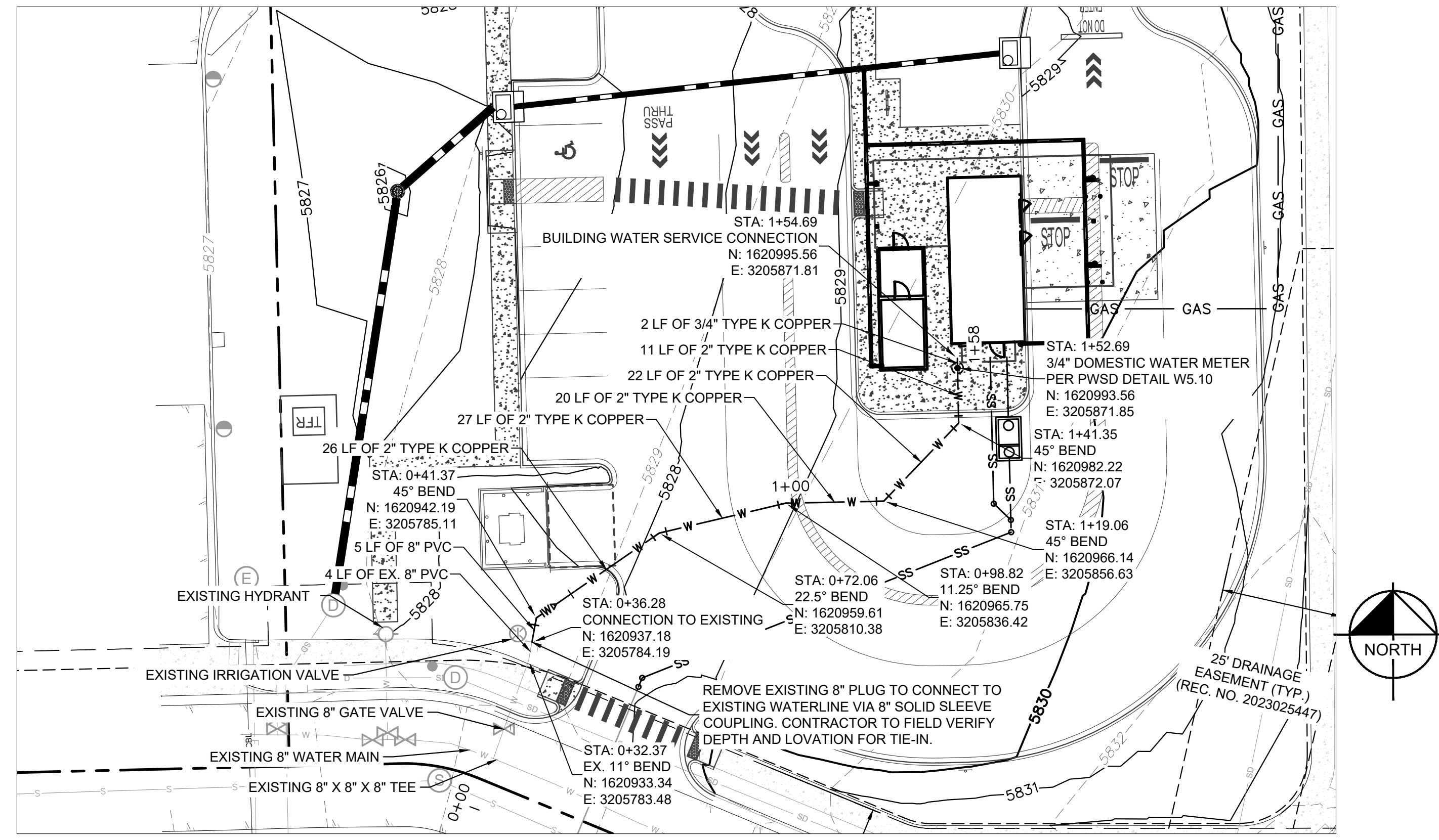
LINCOLN PROFESSIONAL PARK FILING NO. 1
 LOT 2, PARKER, CO
 7 BREW - CONSTRUCTION DOCUMENTS
 OVERALL UTILITY PLAN

PRELIMINARY
 FOR REVIEW ONLY
 NOT FOR
 CONSTRUCTION
Kimley»Horn
 Kimley-Horn and Associates, Inc.

PROJECT NO.
296237001
 SHEET
296237001_00_PWSO
C2.0



THIS DOCUMENT, TOGETHER WITH THE CONCEPTS AND DESIGNS PRESENTED HEREIN, IS AN INSTRUMENT OF SERVICE, AS AN INSTRUMENT OF SERVICE, IS INTENDED ONLY FOR THE SPECIFIC PURPOSE AND CLIENT FOR WHICH IT WAS PREPARED. REUSE OF AND IMPROPER RELIANCE ON THIS DOCUMENT WITHOUT WRITTEN AUTHORIZATION AND ADAPTATION BY KIMLEY-HORN AND ASSOCIATES, INC. SHALL BE WITHOUT LIABILITY TO KIMLEY-HORN AND ASSOCIATES, INC.



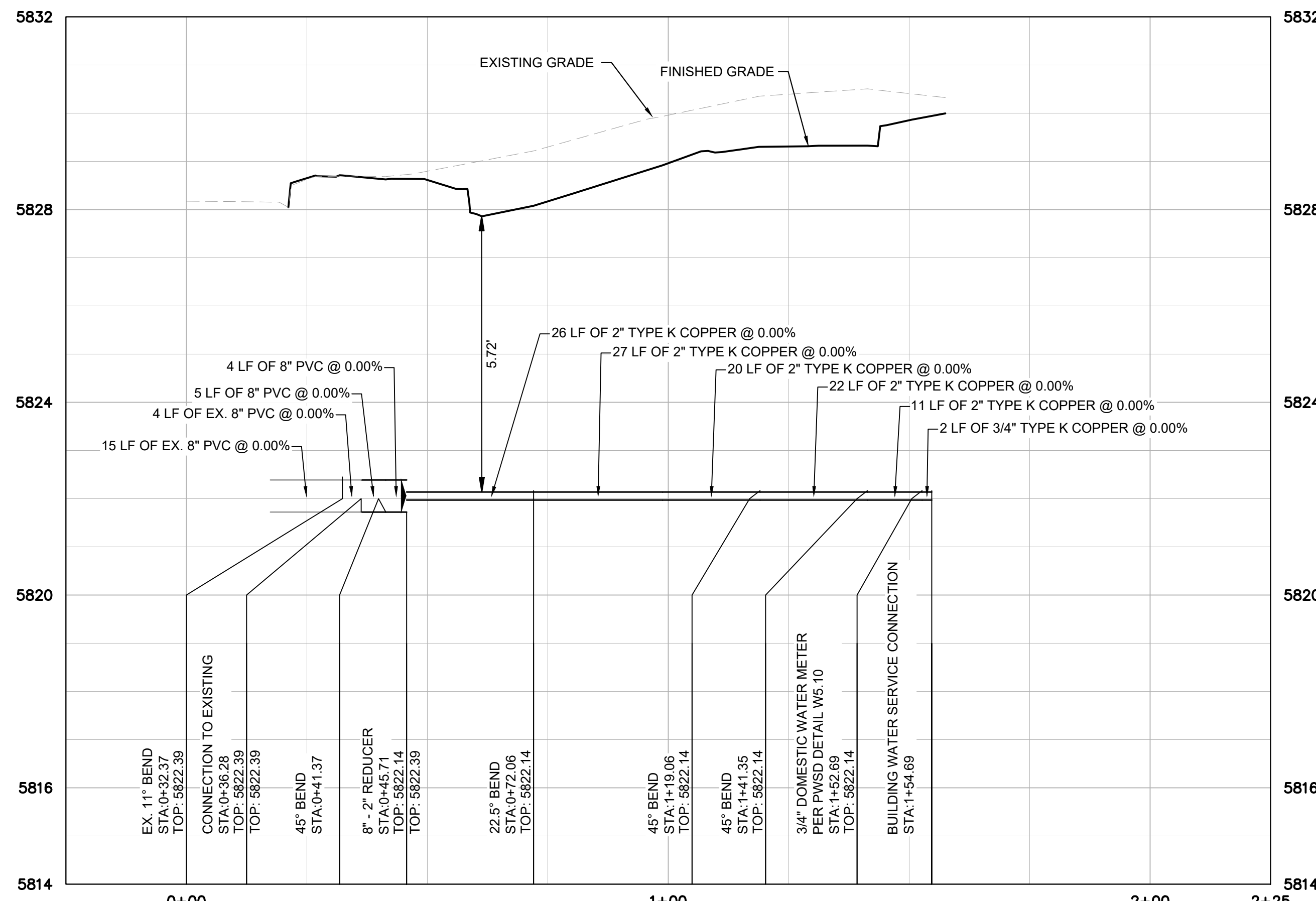
WATER MAIN - PLAN VIEW

LEGEND

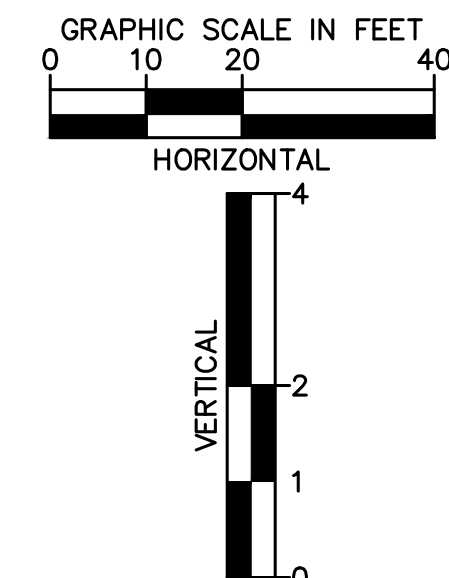
PROPERTY LINE	---
EASEMENT	---
BUILDING OUTLINE	---
PROPOSED GAS LINE	— GAS — GAS
PROPOSED SANITARY SEWER LINE	— S — S
PROPOSED WATER LINE	— W — W
PROPOSED STORM LINE	— SD — SD
EXISTING GAS LINE	— GAS — GAS
EXISTING SANITARY SEWER LINE	— S — S
EXISTING WATER LINE	— W — W
EXISTING STORM LINE	— SD — SD
PROPOSED CONTOUR	100 — 99
EXISTING CONTOUR	100 — 99
EXISTING FIRE HYDRANT	⊕
PROPOSED WATER BENDS	⊕
PROPOSED WATER METER	⊙

NOTES:

1. UTILITY CONNECTIONS TERMINATE 5' FROM BUILDING ENVELOPE. SEE ARCHITECT AND MEP PLANS FOR CONTINUATION.
2. ALL UTILITY PIPE LENGTHS ON PLANS ARE SHOWN FOR REFERENCE AND COORDINATION. PIPE LENGTHS ARE NOT SHOWN FOR BIDDING OR ESTIMATING PURPOSES.
3. ALL DIMENSIONS ARE SHOWN FROM CENTER OF PIPE TO CENTER OF PIPE UNLESS OTHERWISE NOTED.
4. THE EXISTING UTILITIES SHOWN ARE BASED ON AVAILABLE RECORDS. THE CONTRACTOR MUST FIELD DETERMINE THE LOCATION AND DEPTH OF ALL UTILITIES PRIOR TO ANY CONSTRUCTION. REPORT DISCREPANCIES AND POTENTIAL CONFLICTS WITH PROPOSED UTILITIES TO ENGINEER PRIOR TO INSTALLATION OF ANY PIPING.
5. CONTRACTOR TO CONFIRM ALL UTILITY CROSSINGS PRIOR TO CONSTRUCTION.



WATER MAIN - PROFILE VIEW



NO.	REVISION	BY	DATE	APPR

Kimley»Horn
 © 2025 KIMLEY-HORN AND ASSOCIATES, INC.
 6200 South Syracuse Way, Suite 300
 Greenwood, Colorado 80111 (303) 228-2300

DESIGNED BY: MMR
 DRAWN BY: KNP
 CHECKED BY: KEW
 DATE: 8/4/25

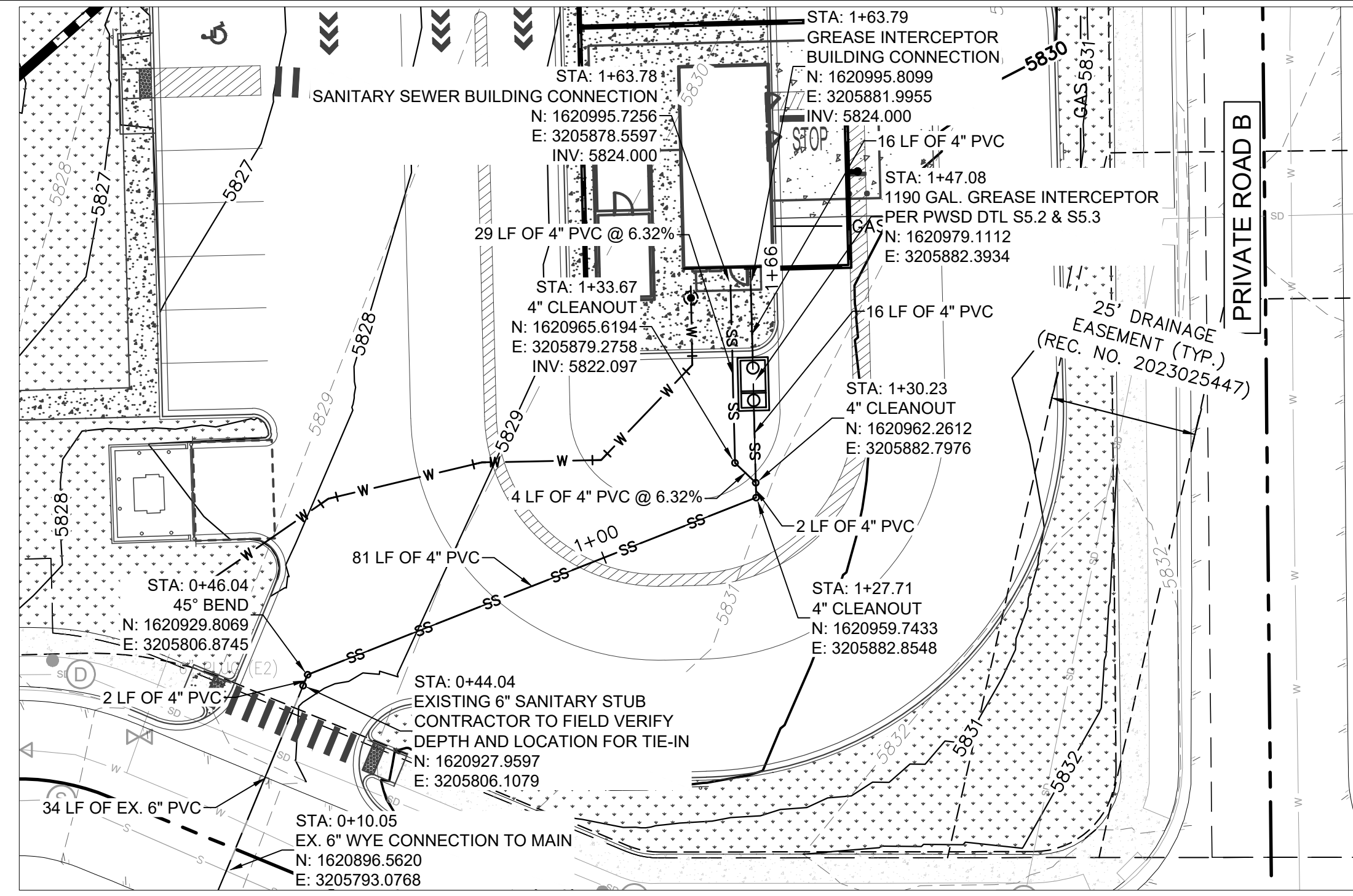
LINCOLN PROFESSIONAL PARK FILING NO. 1
 LOT 2, PARKER, CO
 7 BREW - CONSTRUCTION DOCUMENTS
 WATER LINE PLAN AND PROFILE

PRELIMINARY
 FOR REVIEW ONLY
 NOT FOR
 CONSTRUCTION
Kimley»Horn
 Kimley-Horn and Associates, Inc.

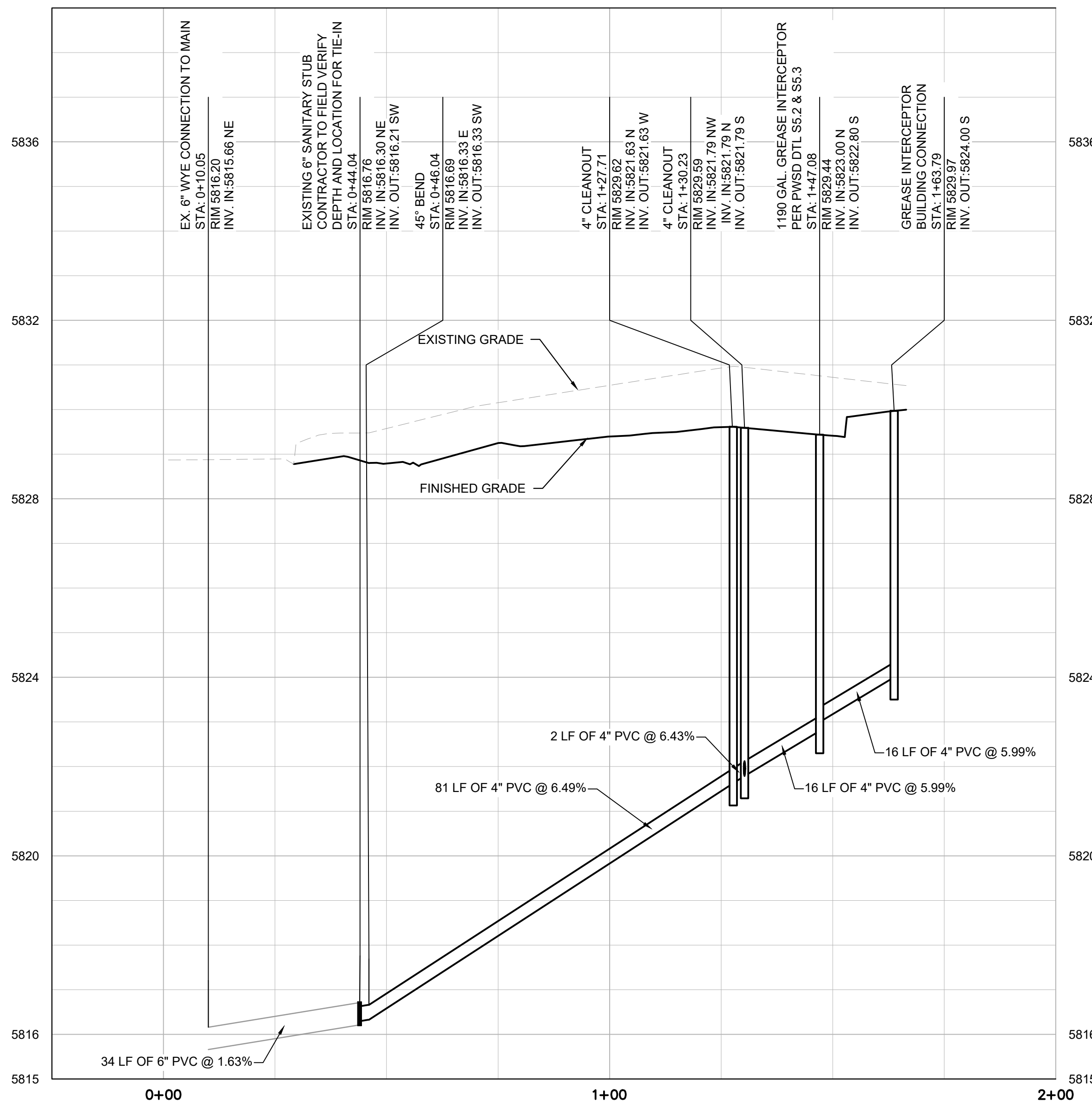
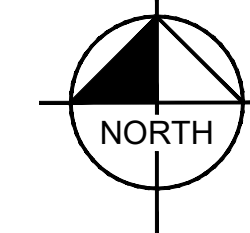
PROJECT NO.
 296237001
 SHEET
 296237001_WATR
C3.0



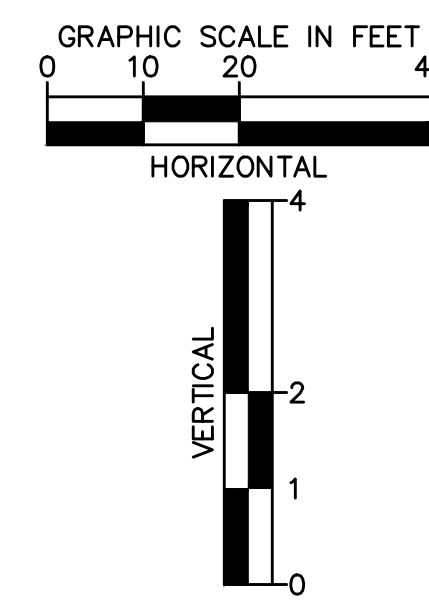
THIS DOCUMENT, TOGETHER WITH THE CONCEPTS AND DESIGNS PRESENTED HEREIN, AS AN INSTRUMENT OF SERVICE, IS INTENDED ONLY FOR THE SPECIFIC PURPOSE AND CLIENT FOR WHICH IT WAS PREPARED. REUSE OF AND IMPROPER RELIANCE ON THIS DOCUMENT WITHOUT WRITTEN AUTHORIZATION AND ADAPTATION BY KIMLEY-HORN AND ASSOCIATES, INC. SHALL BE WITHOUT LIABILITY TO KIMLEY-HORN AND ASSOCIATES, INC.



SANITARY SEWER MAIN - PLAN VIEW



SANITARY SEWER MAIN - PROFILE VIEW



LEGEND

PROPERTY LINE	---
EASEMENT	---
BUILDING OUTLINE	---
PROPOSED GAS LINE	— GAS — GAS —
PROPOSED SANITARY SEWER LINE	— S — S —
PROPOSED WATER LINE	— W — W —
PROPOSED STORM LINE	— SD — SD —
EXISTING GAS LINE	— GAS — GAS —
EXISTING SANITARY SEWER LINE	— S — S —
EXISTING WATER LINE	— W — W —
EXISTING STORM LINE	— SD — SD —
PROPOSED CONTOUR	— 100 — 99 —
EXISTING CONTOUR	— 100 — 99 —
EXISTING SANITARY SEWER MANHOLE	⊙
EXISTING SEWER CLEANOUT	○
PROPOSED SANITARY SEWER MANHOLE	⊙
PROPOSED SEWER CLEANOUT	○

NOTES:

1. UTILITY CONNECTIONS TERMINATE 5' FROM BUILDING ENVELOPE. SEE ARCHITECT AND MEP PLANS FOR CONTINUATION.
2. ALL UTILITY PIPE LENGTHS ON PLANS ARE SHOWN FOR REFERENCE AND COORDINATION. PIPE LENGTHS ARE NOT SHOWN FOR BIDDING OR ESTIMATING PURPOSES.
3. ALL DIMENSIONS ARE SHOWN FROM CENTER OF PIPE TO CENTER OF PIPE UNLESS OTHERWISE NOTED.
4. THE EXISTING UTILITIES SHOWN ARE BASED ON AVAILABLE RECORDS. THE CONTRACTOR MUST FIELD DETERMINE THE LOCATION AND DEPTH OF ALL UTILITIES PRIOR TO ANY CONSTRUCTION. REPORT DISCREPANCIES AND POTENTIAL CONFLICTS WITH PROPOSED UTILITIES TO ENGINEER PRIOR TO INSTALLATION OF ANY PIPING.
5. CONTRACTOR TO CONFIRM ALL UTILITY CROSSINGS PRIOR TO CONSTRUCTION.



NO.	REVISION	BY	DATE	APPR

Kimley»Horn
 © 2025 KIMLEY-HORN AND ASSOCIATES, INC.
 6200 South Syracuse Way, Suite 300
 Greenwood, Colorado 80111 (303) 228-2300

DESIGNED BY: MMR
 DRAWN BY: KNP
 CHECKED BY: KEW
 DATE: 8/4/25

LINCOLN PROFESSIONAL PARK FILING NO. 1
 LOT 2, PARKER, CO
 7 BREW - CONSTRUCTION DOCUMENTS
 SANITARY SEWER PLAN & PROFILE

PRELIMINARY
 FOR REVIEW ONLY
 NOT FOR
 CONSTRUCTION
Kimley»Horn
 Kimley-Horn and Associates, Inc.

PROJECT NO.
 296237001
 SHEET
 296237001_SSWR
C4.0

