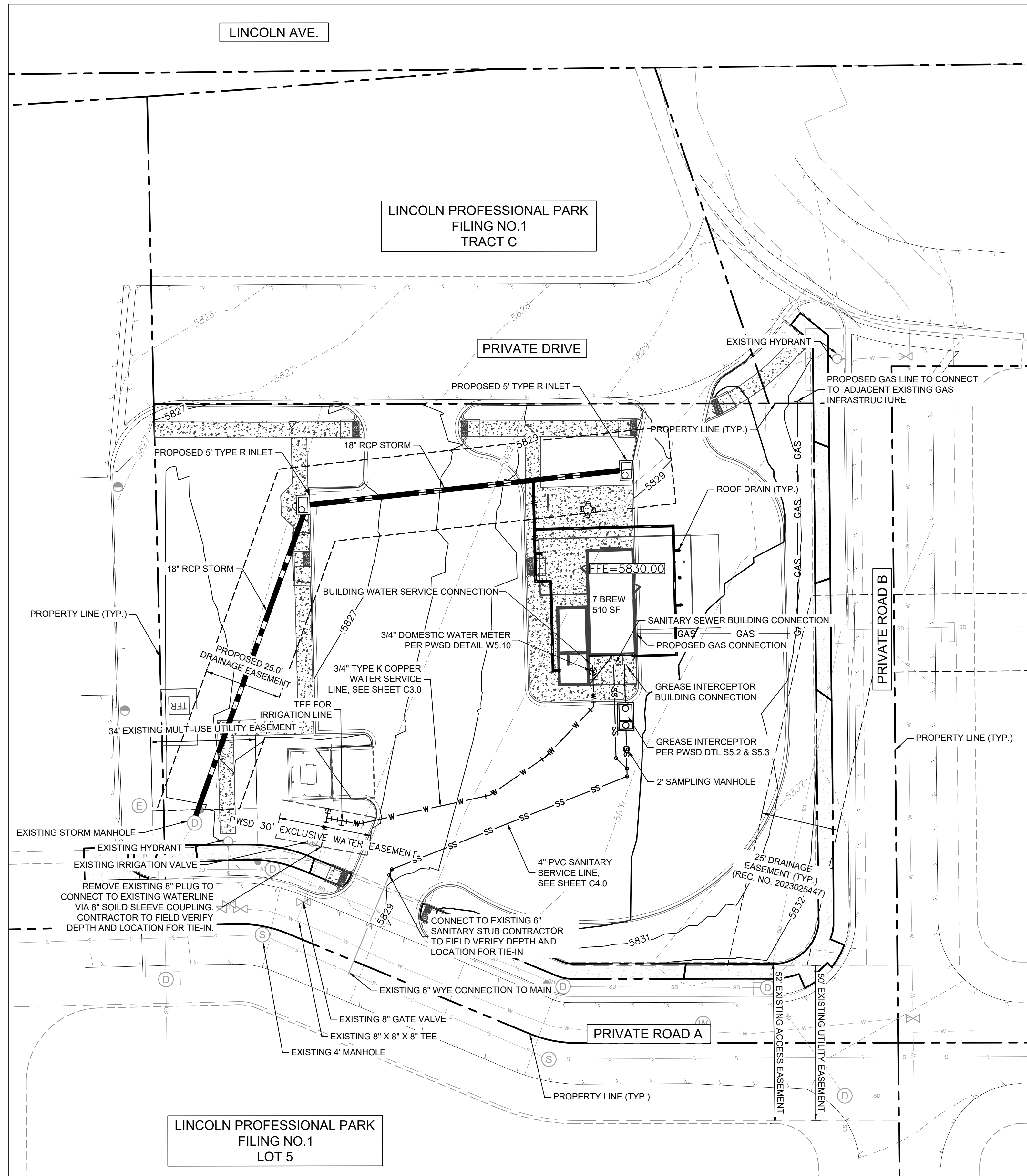






THIS DOCUMENT, TOGETHER WITH THE CONCEPTS AND DESIGNS PRESENTED HEREIN, IS INTENDED ONLY FOR THE SPECIFIC PURPOSE AND CLIENT FOR WHICH IT WAS PREPARED. REUSE OF AND IMPROPER RELIANCE ON THIS DOCUMENT WITHOUT WRITTEN AUTHORIZATION AND ADAPTATION BY KIMLEY-HORN AND ASSOCIATES, INC. SHALL BE WITHOUT LIABILITY TO KIMLEY-HORN AND ASSOCIATES, INC.

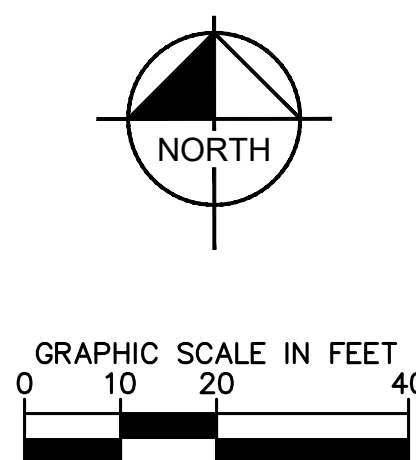


**LEGEND**

PROPERTY LINE	---
EASEMENT	---
BUILDING OUTLINE	---
PROPOSED GAS LINE	— GAS — GAS
PROPOSED SANITARY SEWER LINE	— S — S
PROPOSED WATER LINE	— W — W
PROPOSED STORM LINE	— SD — SD
EXISTING GAS LINE	— GAS — GAS
EXISTING SANITARY SEWER LINE	— S — S
EXISTING WATER LINE	— W — W
EXISTING STORM LINE	— SD — SD
PROPOSED CONTOUR	— 100 — 99
EXISTING CONTOUR	— 100 — 99
EXISTING SANITARY SEWER MANHOLE	⊙
EXISTING STORM MANHOLE	⊙
EXISTING FIRE HYDRANT	⊙
EXISTING SEWER CLEANOUT	⊙
EXISTING WATER VALVE	⊙
EXISTING STORM DRAIN STRUCTURE	⊙
PROPOSED WATER BENDS	⌒
PROPOSED STORM CURB INLET	⊙
PROPOSED WATER METER	⊙
PROPOSED SANITARY SEWER CLEANOUT	⊙

**NOTES:**

- UTILITY CONNECTIONS TERMINATE 5' FROM BUILDING ENVELOPE. SEE ARCHITECT AND MEP PLANS FOR CONTINUATION.
- ALL DIMENSIONS ARE SHOWN FROM CENTER OF PIPE TO CENTER OF PIPE UNLESS OTHERWISE NOTED.
- THE CONTRACTOR MUST FIELD DETERMINE THE LOCATION AND DEPTH OF ALL UTILITIES PRIOR TO ANY CONSTRUCTION. REPORT DISCREPANCIES AND POTENTIAL CONFLICTS WITH PROPOSED UTILITIES TO ENGINEER PRIOR TO INSTALLATION OF ANY PIPING.
- CONTRACTOR TO CONFIRM ALL UTILITY CROSSINGS PRIOR TO CONSTRUCTION.
- ALL ELECTRIC, TELEPHONE, AND GAS EXTENSIONS INCLUDING SERVICES LINES SHALL BE CONSTRUCTED TO THE APPROPRIATE UTILITY COMPANY SPECIFICATIONS. ALL UTILITY DISCONNECTIONS SHALL BE COORDINATED WITH THE DESIGNATED UTILITY COMPANIES.
- CONSTRUCTION SHALL NOT START ON ANY PUBLIC UTILITY SYSTEM UNTIL WRITTEN APPROVAL HAS BEEN RECEIVED BY THE ENGINEER FROM THE APPROPRIATE GOVERNING AUTHORITY AND CONTRACTOR HAS BEEN NOTIFIED BY THE ENGINEER.



NO.	REVISION	BY	DATE	APPR

**Kimley»Horn**

© 2025 KIMLEY-HORN AND ASSOCIATES, INC.  
6200 South Syracuse Way, Suite 300  
Greenwood, Colorado 80111 (303) 228-2300

DESIGNED BY: MMR  
DRAWN BY: KNP  
CHECKED BY: KEW  
DATE: 12/2/25

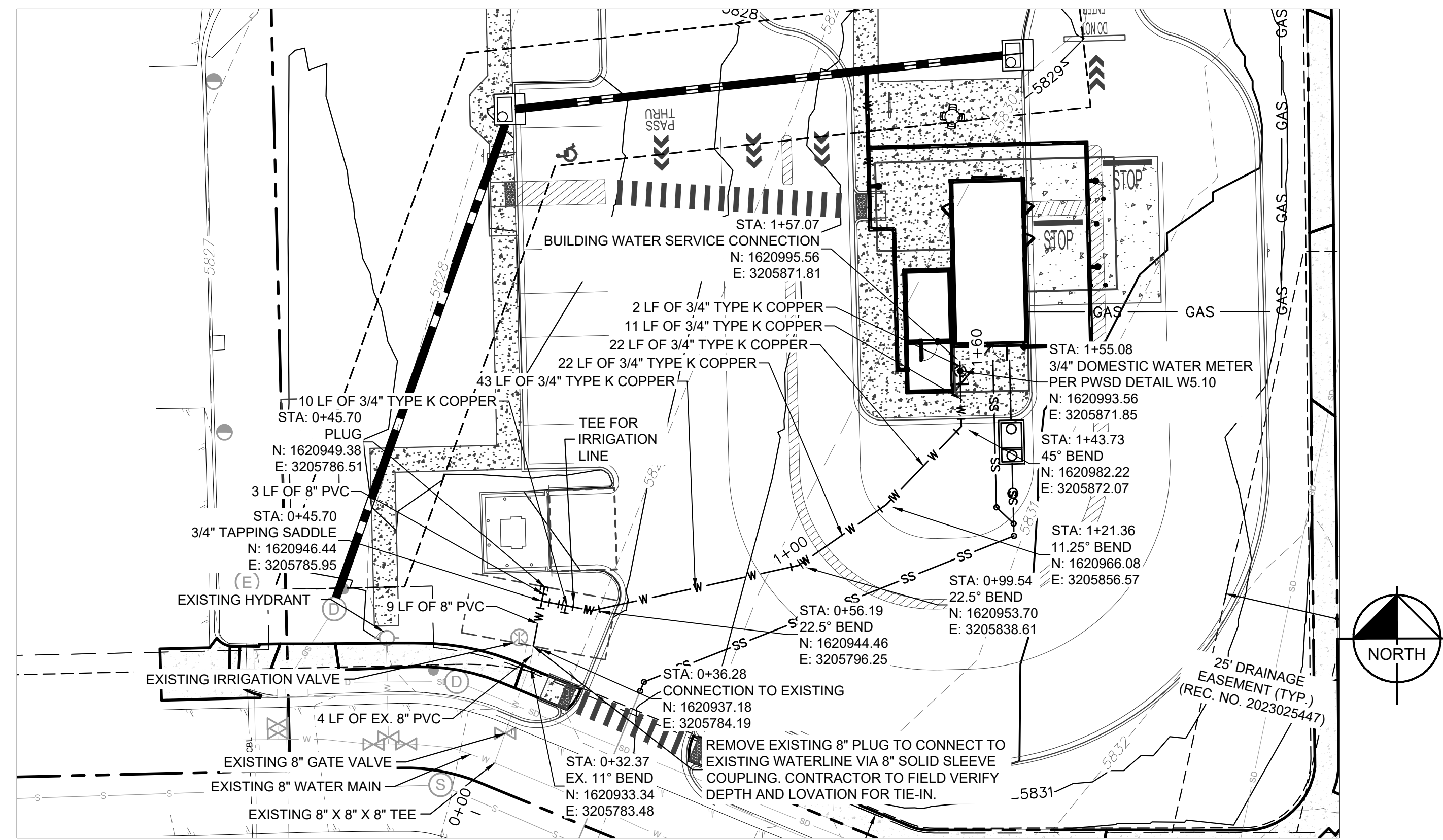
LINCOLN PROFESSIONAL PARK FILING NO. 1  
LOT 2, PARKER, CO  
7 BREW - CONSTRUCTION DOCUMENTS  
OVERALL UTILITY PLAN

PRELIMINARY  
FOR REVIEW ONLY  
NOT FOR  
CONSTRUCTION

PROJECT NO.  
296237001  
SHEET  
296237001\_00\_PWS  
C2.0



THIS DOCUMENT, TOGETHER WITH THE CONCEPTS AND DESIGNS PRESENTED HEREIN, AS AN INSTRUMENT OF SERVICE, IS INTENDED ONLY FOR THE SPECIFIC PURPOSE AND CLIENT FOR WHICH IT WAS PREPARED. REUSE OF AND IMPROPER RELIANCE ON THIS DOCUMENT WITHOUT WRITTEN AUTHORIZATION AND ADAPTATION BY KIMLEY-HORN AND ASSOCIATES, INC. SHALL BE WITHOUT LIABILITY TO KIMLEY-HORN AND ASSOCIATES, INC.



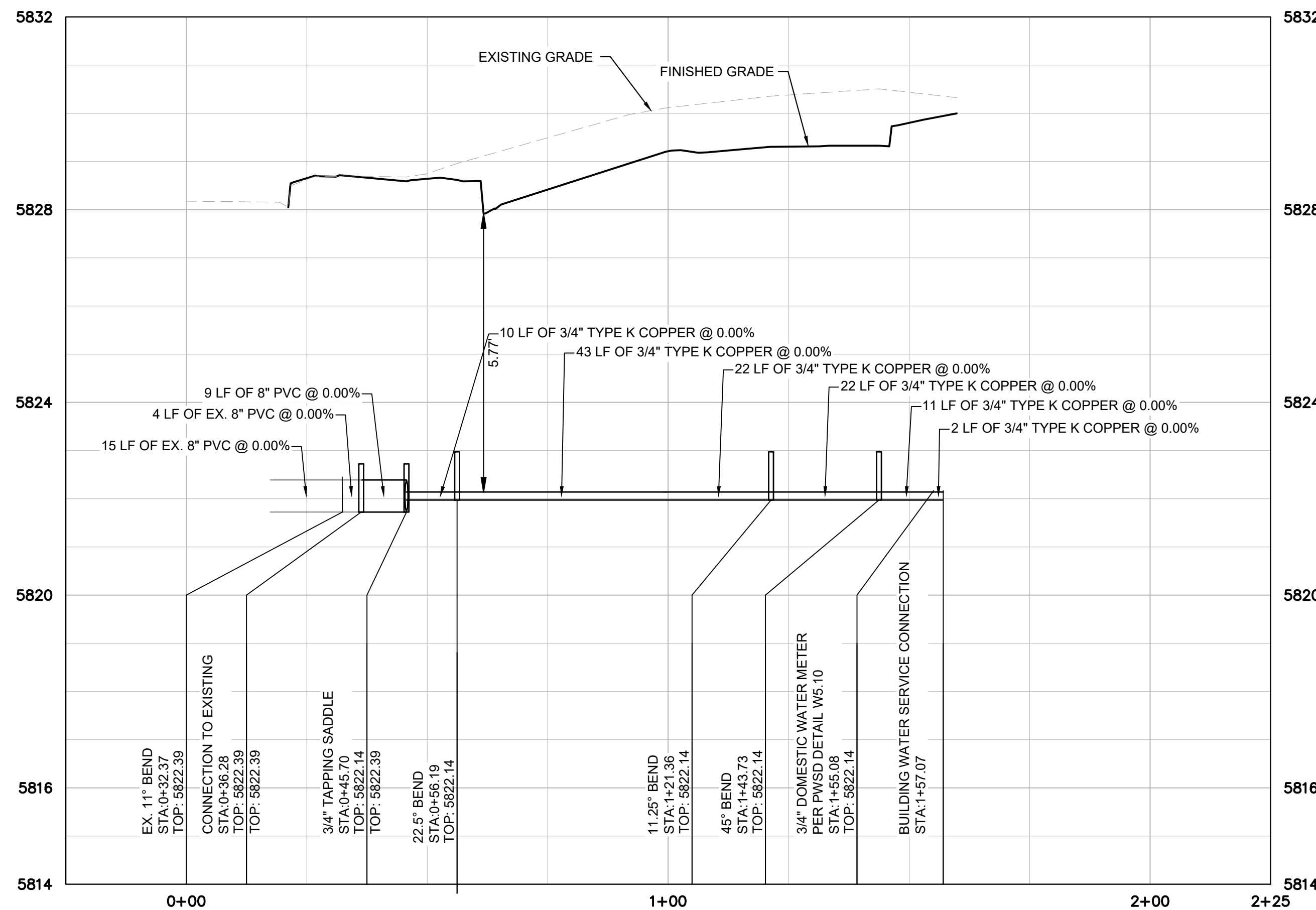
WATER MAIN - PLAN VIEW

**LEGEND**

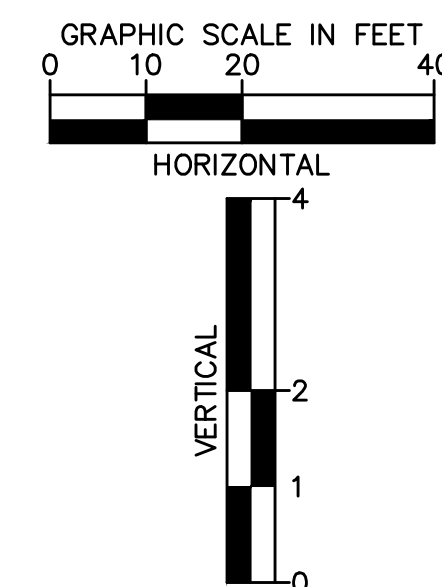
PROPERTY LINE	---
EASEMENT	---
BUILDING OUTLINE	---
PROPOSED GAS LINE	— GAS — GAS
PROPOSED SANITARY SEWER LINE	— S — S
PROPOSED WATER LINE	— W — W
PROPOSED STORM LINE	— SD — SD
EXISTING GAS LINE	— GAS — GAS
EXISTING SANITARY SEWER LINE	— S — S
EXISTING WATER LINE	— W — W
EXISTING STORM LINE	— SD — SD
PROPOSED CONTOUR	— 100 — 99
EXISTING CONTOUR	— 100 — 99
EXISTING FIRE HYDRANT	⊙
PROPOSED WATER BENDS	⌒ ⌓ ⌔ ⌕
PROPOSED WATER METER	⊙

**NOTES:**

1. UTILITY CONNECTIONS TERMINATE 5' FROM BUILDING ENVELOPE. SEE ARCHITECT AND MEP PLANS FOR CONTINUATION.
2. ALL UTILITY PIPE LENGTHS ON PLANS ARE SHOWN FOR REFERENCE AND COORDINATION. PIPE LENGTHS ARE NOT SHOWN FOR BIDDING OR ESTIMATING PURPOSES.
3. ALL DIMENSIONS ARE SHOWN FROM CENTER OF PIPE TO CENTER OF PIPE UNLESS OTHERWISE NOTED.
4. THE EXISTING UTILITIES SHOWN ARE BASED ON AVAILABLE RECORDS. THE CONTRACTOR MUST FIELD DETERMINE THE LOCATION AND DEPTH OF ALL UTILITIES PRIOR TO ANY CONSTRUCTION. REPORT DISCREPANCIES AND POTENTIAL CONFLICTS WITH PROPOSED UTILITIES TO ENGINEER PRIOR TO INSTALLATION OF ANY PIPING.
5. CONTRACTOR TO CONFIRM ALL UTILITY CROSSINGS PRIOR TO CONSTRUCTION.



WATER MAIN - PROFILE VIEW



NO.	REVISION	BY	DATE	APPR

**Kimley»Horn**

© 2025 KIMLEY-HORN AND ASSOCIATES, INC.  
6200 South Syracuse Way, Suite 300  
Greenwood, Colorado 80111 (303) 228-2300

DESIGNED BY: MMR  
DRAWN BY: KNP  
CHECKED BY: KEW  
DATE: 12/2/25

LINCOLN PROFESSIONAL PARK FILING NO. 1  
LOT 2, PARKER, CO  
7 BREW - CONSTRUCTION DOCUMENTS  
WATER LINE PLAN AND PROFILE

PRELIMINARY  
FOR REVIEW ONLY  
NOT FOR CONSTRUCTION  
**Kimley»Horn**  
Kimley-Horn and Associates, Inc.

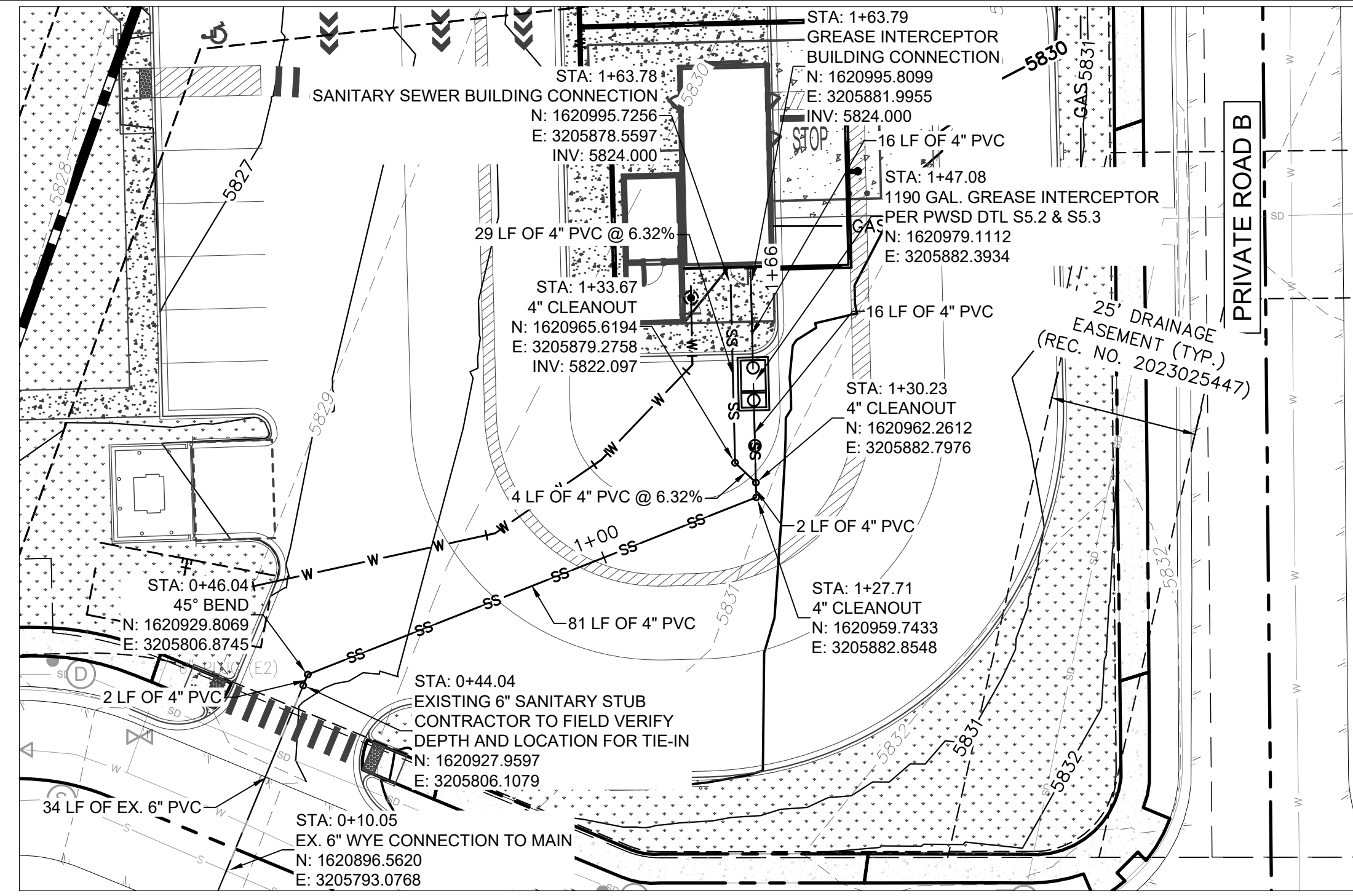
PROJECT NO.  
296237001

SHEET  
296237001\_WATR

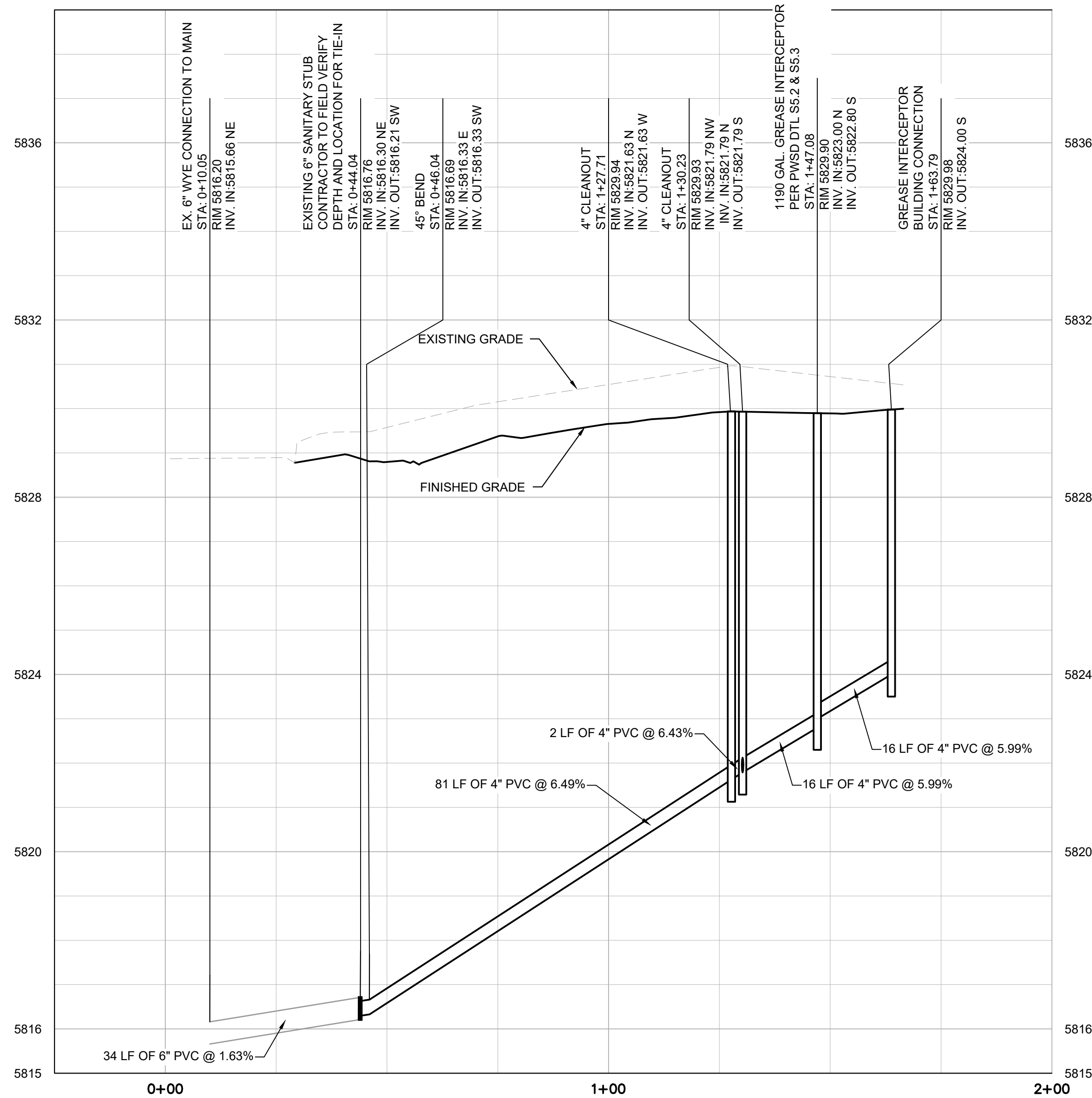
C3.0



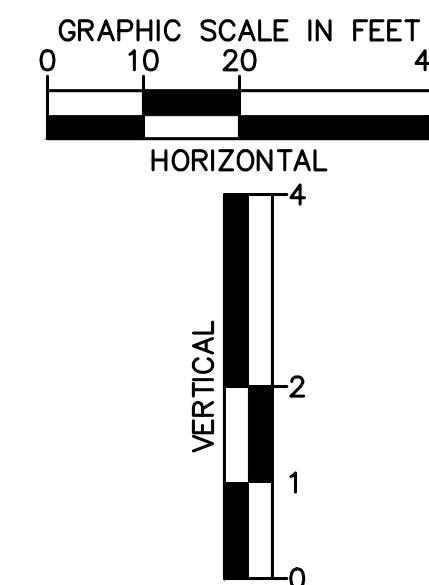
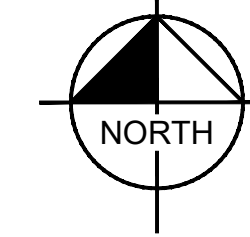
THIS DOCUMENT, TOGETHER WITH THE CONCEPTS AND DESIGNS PRESENTED HEREIN, AS AN INSTRUMENT OF SERVICE, IS INTENDED ONLY FOR THE SPECIFIC PURPOSE AND CLIENT FOR WHICH IT WAS PREPARED. REUSE OF AND IMPROPER RELIANCE ON THIS DOCUMENT WITHOUT WRITTEN AUTHORIZATION AND ADAPTATION BY KIMLEY-HORN AND ASSOCIATES, INC. SHALL BE WITHOUT LIABILITY TO KIMLEY-HORN AND ASSOCIATES, INC.



SANITARY SEWER MAIN - PLAN VIEW



SANITARY SEWER MAIN - PROFILE VIEW



**LEGEND**

PROPERTY LINE	---
EASEMENT	---
BUILDING OUTLINE	---
PROPOSED GAS LINE	— GAS — GAS —
PROPOSED SANITARY SEWER LINE	— S — S —
PROPOSED WATER LINE	— W — W —
PROPOSED STORM LINE	— SD — SD —
EXISTING GAS LINE	— GAS — GAS —
EXISTING SANITARY SEWER LINE	— S — S —
EXISTING WATER LINE	— W — W —
EXISTING STORM LINE	— SD — SD —
PROPOSED CONTOUR	— 100 — 99 —
EXISTING CONTOUR	— 100 — 99 —
EXISTING SANITARY SEWER MANHOLE	⊙
EXISTING SEWER CLEANOUT	○
PROPOSED SANITARY SEWER MANHOLE	⊙
PROPOSED SEWER CLEANOUT	○

**NOTES:**

- UTILITY CONNECTIONS TERMINATE 5' FROM BUILDING ENVELOPE. SEE ARCHITECT AND MEP PLANS FOR CONTINUATION.
- ALL UTILITY PIPE LENGTHS ON PLANS ARE SHOWN FOR REFERENCE AND COORDINATION. PIPE LENGTHS ARE NOT SHOWN FOR BIDDING OR ESTIMATING PURPOSES.
- ALL DIMENSIONS ARE SHOWN FROM CENTER OF PIPE TO CENTER OF PIPE UNLESS OTHERWISE NOTED.
- THE EXISTING UTILITIES SHOWN ARE BASED ON AVAILABLE RECORDS. THE CONTRACTOR MUST FIELD DETERMINE THE LOCATION AND DEPTH OF ALL UTILITIES PRIOR TO ANY CONSTRUCTION. REPORT DISCREPANCIES AND POTENTIAL CONFLICTS WITH PROPOSED UTILITIES TO ENGINEER PRIOR TO INSTALLATION OF ANY PIPING.
- CONTRACTOR TO CONFIRM ALL UTILITY CROSSINGS PRIOR TO CONSTRUCTION.

NO.	REVISION	BY	DATE	APPR

**Kimley»Horn**

© 2025 KIMLEY-HORN AND ASSOCIATES, INC.  
6200 South Syracuse Way, Suite 300  
Greenwood, Colorado 80111 (303) 228-2300

DESIGNED BY: MMR  
DRAWN BY: KNP  
CHECKED BY: KEW  
DATE: 12/2/25

LINCOLN PROFESSIONAL PARK FILING NO. 1  
LOT 2, PARKER, CO  
7 BREW - CONSTRUCTION DOCUMENTS  
SANITARY SEWER PLAN & PROFILE

PRELIMINARY  
FOR REVIEW ONLY  
NOT FOR  
CONSTRUCTION  
**Kimley»Horn**  
Kimley-Horn and Associates, Inc.

PROJECT NO.  
296237001

SHEET  
296237001\_SSWR

C4.0



THIS DOCUMENT, TOGETHER WITH THE CONCRETE AND DESIGN PRESENTED HEREIN, IS AN INSTRUMENT OF SERVICE, IS INTENDED ONLY FOR THE SPECIFIC PURPOSE AND CLIENT FOR WHICH IT WAS PREPARED, REUSE OF AND IMPROPER RELIANCE ON THIS DOCUMENT WITHOUT WRITTEN AUTHORIZATION AND ADAPTATION BY KIMLEY-HORN AND ASSOCIATES, INC. SHALL BE WITHOUT LIABILITY TO KIMLEY-HORN AND ASSOCIATES, INC.

**PIPE BEDDING:**

(a) **Installation of Bedding and Pipe:** After completion of the trench excavation and proper preparation of the foundation, six inches (6") of bedding material shall be placed on the trench bottom for support under the pipe. Bed holes shall be dug deep enough to provide a minimum of two inches (2") of clearance between the bed and bedding material. All pipe shall be installed in such a manner as to insure full support of the pipe barrel over its entire length. After the pipe is adjusted for line and grade, and the joint is made, the bedding material shall be carefully placed and tamped under the haunches of the pipe and in the previously dug bed holes. The purpose of tamping is to ensure uniform support for the pipe.

Tamping is herein defined as the act of placing approved bedding material under the haunches of the pipe, paying particular attention to voids, bed holes, and sling holes. The purpose of tamping is to ensure uniform support for the pipe.

The limits of bedding shall be from six inches (6") below the bottom of the pipe to twelve inches (12") above the top of the pipe. Approved backfill may then be installed to the groundline. See Chapter 2 of these Standards for backfill and compaction of backfill.

(b) **Bedding Material:** The bedding material shall be a clean well-graded sand or squeegee sand and shall conform to the following limits when tested by means of laboratory sieves:

**Well-Graded Sand for (24-inch or large diameter)**

Sieve Size	Total Percent Passing by Weight
3/8 inch	100
No. 4	70-100
No. 8	35-65
No. 16	20-80
No. 30	8-40
No. 50	2-30
No. 100	1-10
No. 200	0-3

**Squeegee Sand**  
for use with 20-inch or smaller

Sieve Size	Total Percent Passing by Weight
3/8 inch	100
No. 200	0-3

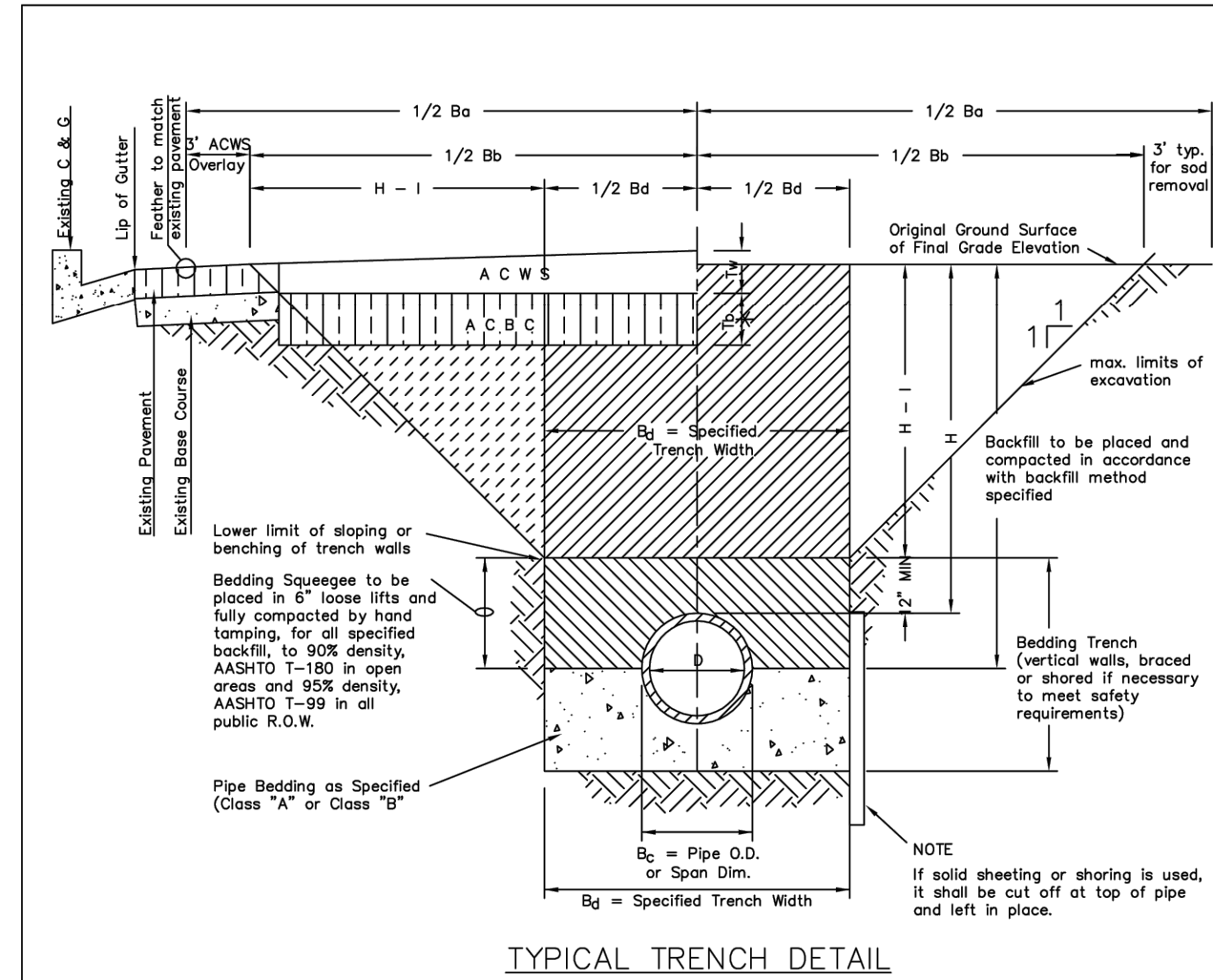
If approved by the District, fines from the trench walls and spoils pile may be used to provide uniform support under the pipe. No rock or stone larger than that allowed by the sieve analysis, or any other detrimental substance, shall be placed closer to the pipe than six inches (6"). Approved bedding materials shall be stockpiled on the jobsite to be used in the event natural materials become unsatisfactory. The District reserves the right to require the use of the specified bedding material at any time.

**PARKER WATER & SANITATION DISTRICT  
PIPE BEDDING**

SCALE: NONE	DATE: 2/98
APPROVED: PVR	5/98 2/00 1/16 10/16
DIRECTOR OF ENGINEERING	

2016 REVISION

SHEET W4.2



**TYPICAL TRENCH DETAIL**

- NOTES**
1. Sloping or benching of trench side walls, where permitted shall be in accordance with applicable Federal, State and Local safety requirements.
  2. Trench shall be braced and shored as necessary to afford safe working conditions or to protect adjacent utilities, structures, etc. Unless otherwise specified on the plans, no pavement will be made for removal, replacement or relocation of curb and gutter, utilities, sidewalk, structures, etc. outside the maximum limits of excavation as shown and the contractor shall be responsible for protection of same.
  3. If dimension  $T_0$  is  $\leq 5'$ , then existing asphalt pavement shall be removed and replaced up to the gutter. Maximum asphalt pay width,  $B_2$  &  $B_3$  shall then be based upon this actual width.

**TABLE II  
ASPHALT AND BASE COURSE REPLACEMENT SCHEDULE**

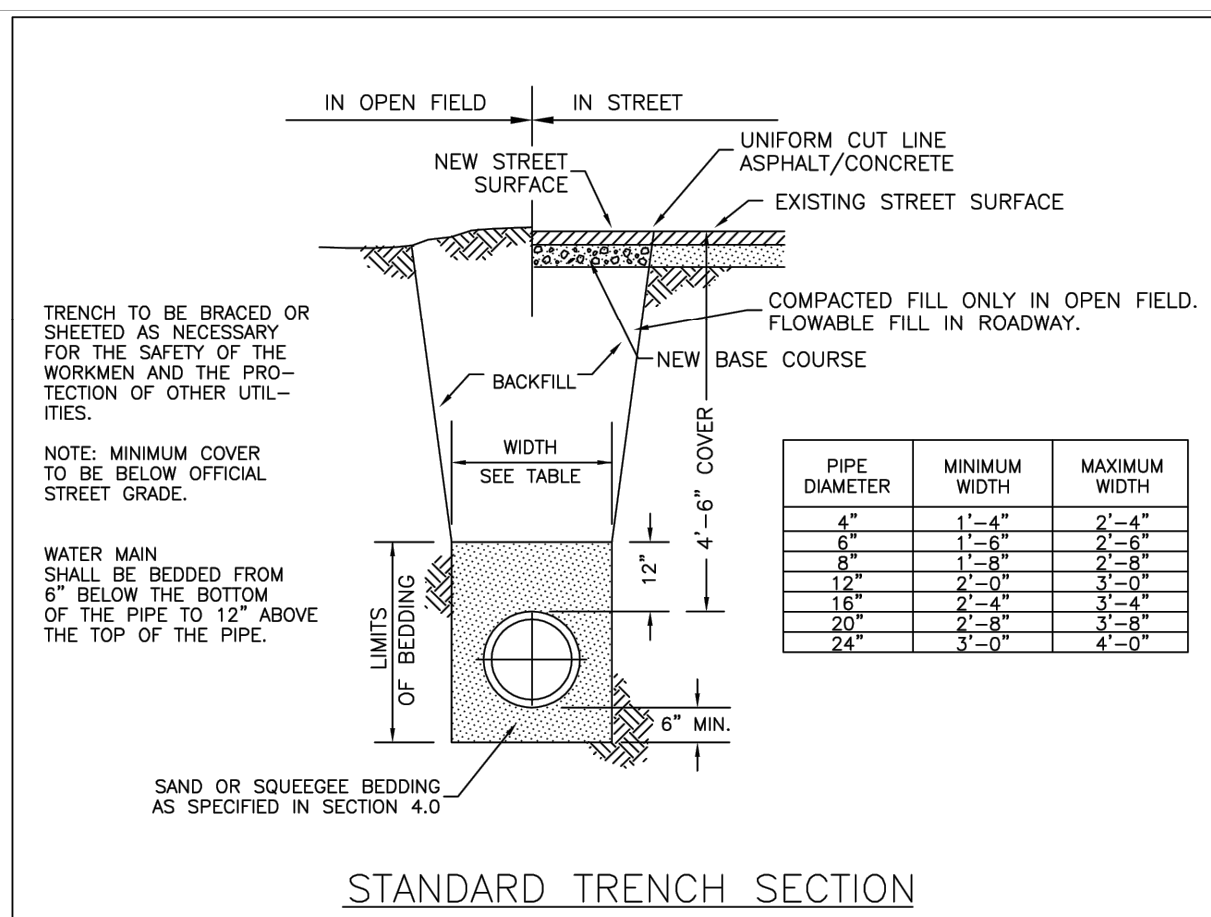
STREET WIDTH	ASPHALTIC BASE COURSE (1/2")	ASPHALTIC WEARING SURFACE (1/2")	TOTAL THICKNESS (1")
UP TO 36'	4"	2"	6"
36' TO 44'	4"	3"	7"
44' TO 48'	5"	3"	8"
WIDER THAN 48'	6"	3"	9"

**PARKER WATER & SANITATION DISTRICT  
SEWER TRENCHING AND BEDDING DETAIL**

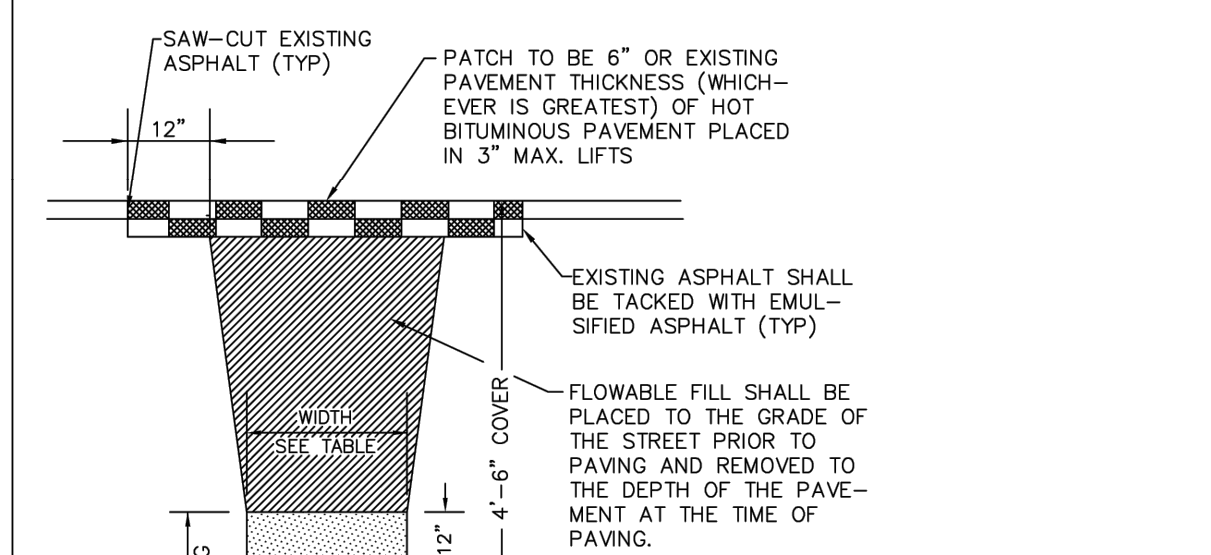
SCALE: NONE	DATE: 2/98
APPROVED: PVR	5/98 1/16 10/16
DIRECTOR OF ENGINEERING	

2016 REVISION

SHEET W4.1



**STANDARD TRENCH SECTION**

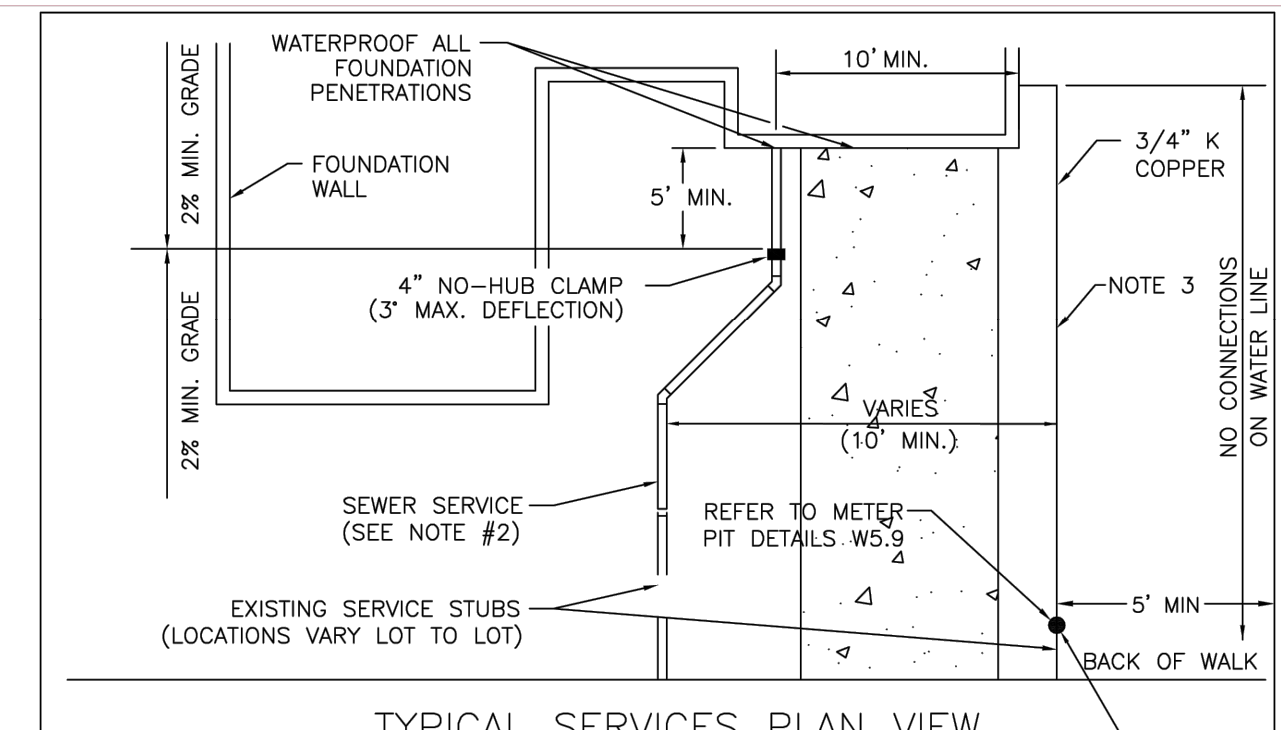


**PARKER WATER & SANITATION DISTRICT  
TYPICAL TRENCH SECTION  
PIPE PROTECTION**

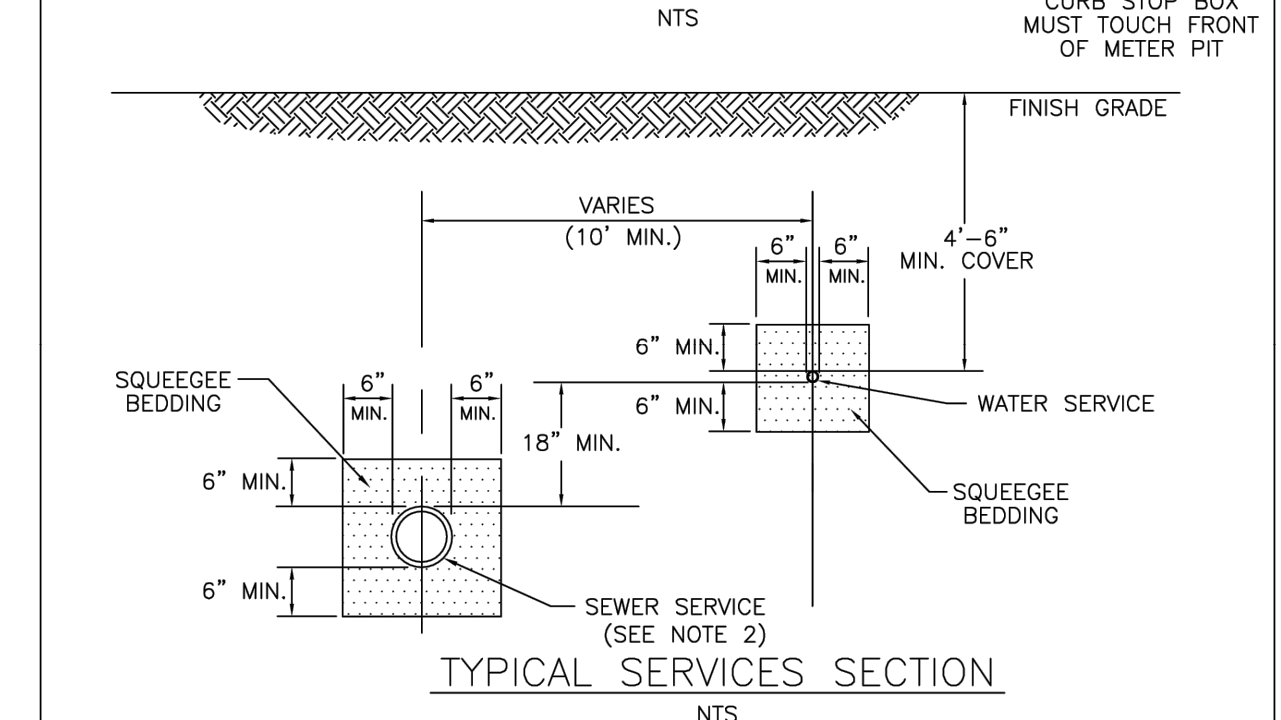
SCALE: NONE	DATE: 2/98
APPROVED: PVR	1/16 10/16
DIRECTOR OF ENGINEERING	

2016 REVISION

SHEET W4.1



**TYPICAL SERVICES PLAN VIEW**



**TYPICAL SERVICES SECTION**

**NOTE**

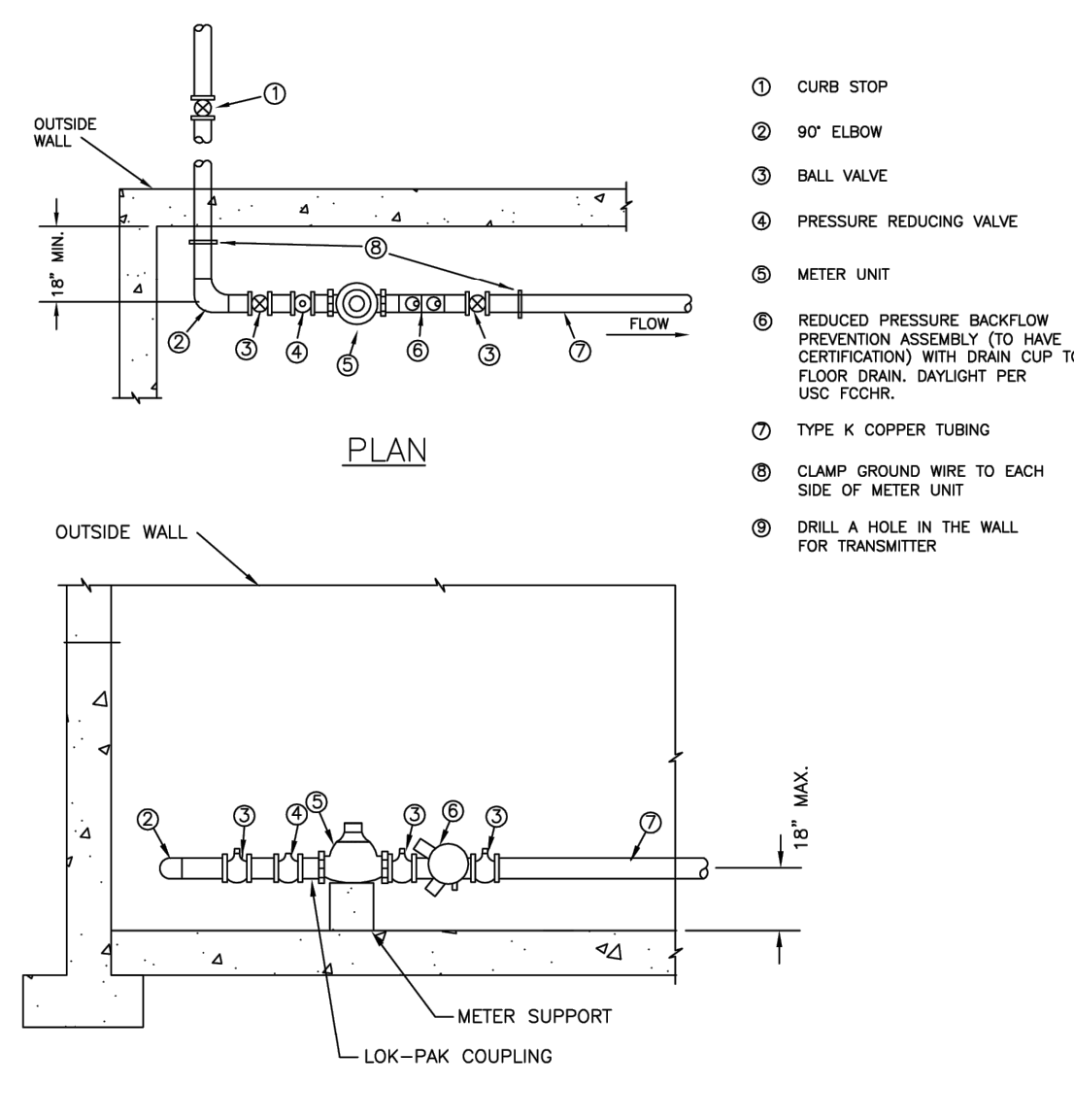
1. SEE SHEET W1.1 FOR DISTRICT POLICIES AND INSTALLATION NOTES.
2. REFER TO SEWER SERVICES DETAIL SHEET S1.2.
3. 4" PVC SLEEVES REQUIRED FOR SERVICE LINES UNDER CONCRETE SURFACE.

**PARKER WATER & SANITATION DISTRICT  
TYPICAL WATER SERVICES**

SCALE: NONE	DATE: 2/98
APPROVED: PVR	1/04 10/16 06/05 12/07 1/16
DIRECTOR OF ENGINEERING	

2016 REVISION

SHEET W1.2



**METER YOKE DISTANCE**

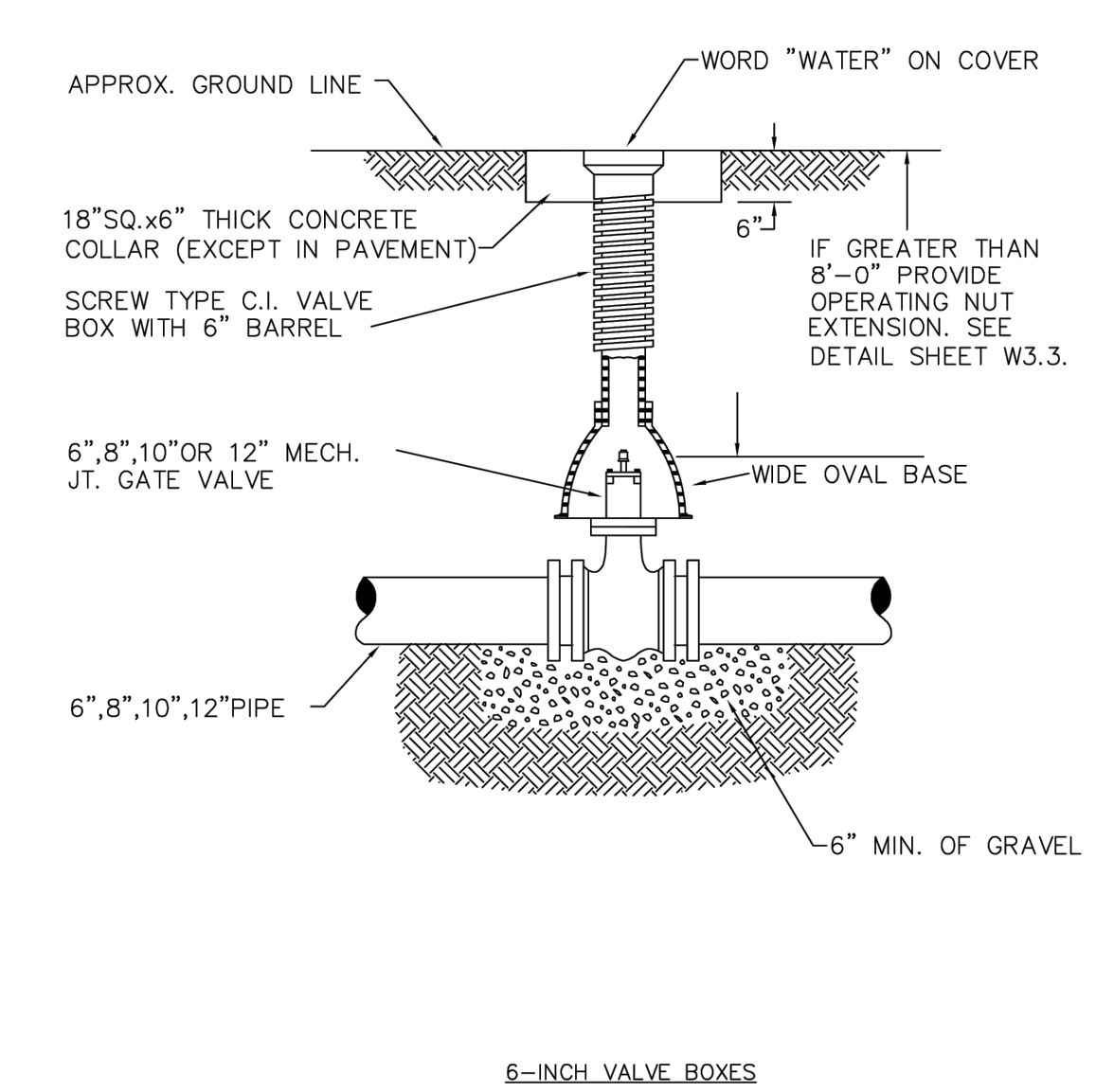
- NOTES**
- 1 - PIPE JOINT SHALL BE THREADED OR SOLDERED WITH SILVER SOLDER.
  - 2 - INSTALLATION MUST ALLOW ACCESS FOR MAINTENANCE AND BE PROTECTED FROM FREEZING.
  - 3 - SEE WATER SYSTEM SPECIFICATIONS FOR GENERAL METER NOTES.
  - 4 - COMPANION FLANGES SHALL BE BRASS.
  - 5 - METER SUPPORT SHALL BE EITHER CONCRETE OR ADJ. STEEL PIPE (SEE SHEET W3.10).
  - 6 - 1.0' MINIMUM CLEARANCE AROUND BACKFLOW DEVICE.
  - 7 - FLOOR DRAIN TO BE 2X PIPE SIZE.
  - 8 - FOR IRRIGATION USES, ADD RAIN SENSOR AND SMART E.T. CONTROLLER.

**PARKER WATER & SANITATION DISTRICT  
INSIDE SETTING FOR  
1 1/2" & 2" METER**

SCALE: NONE	DATE: 2/98
APPROVED: PVR	8/99 01/02 01/16 2/00 06/05 10/16 4/01 07/06
DIRECTOR OF ENGINEERING	

2016 REVISION

SHEET W5.14



**6-INCH VALVE BOXES**

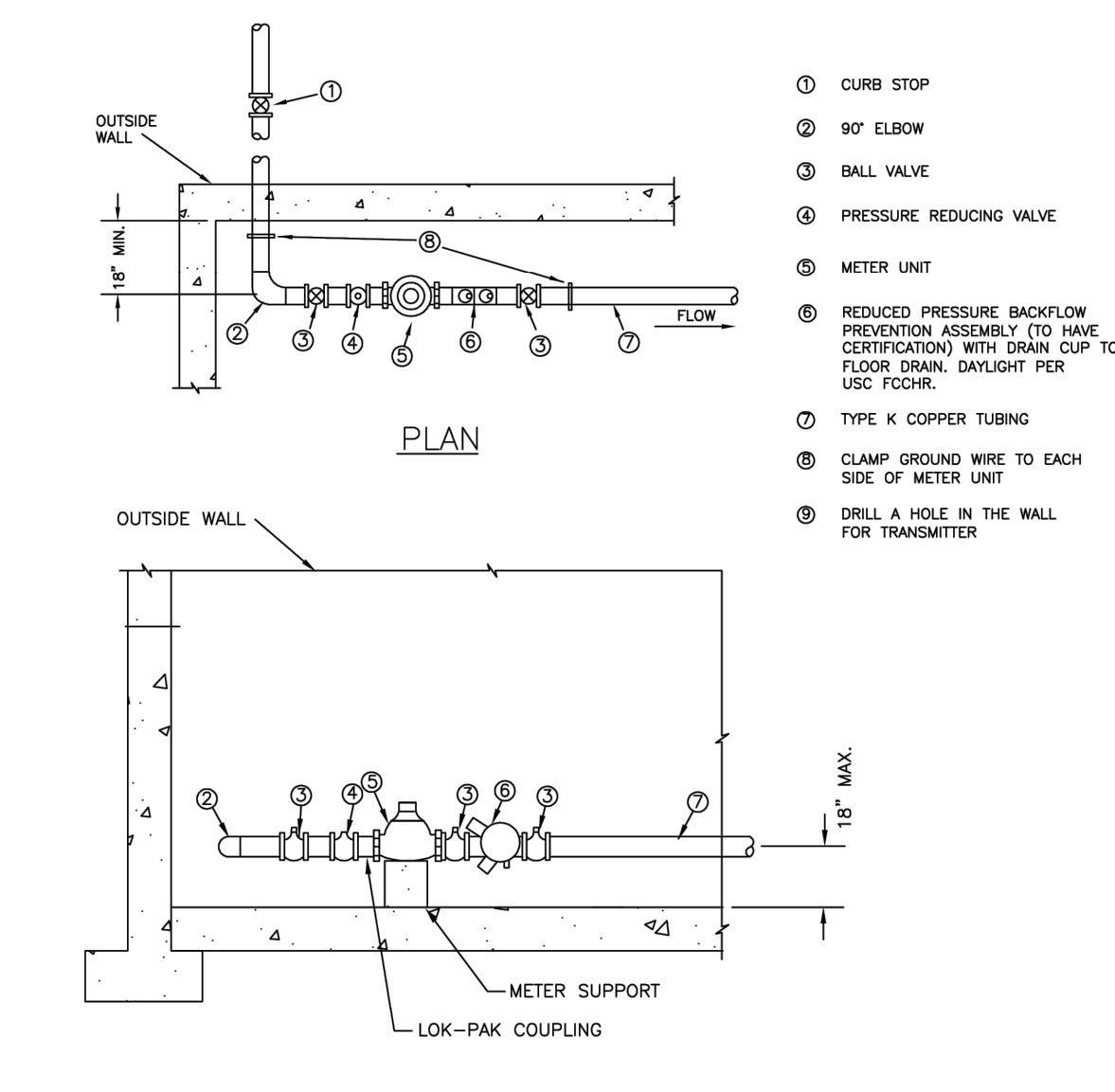
- NOTES:**
1. ALL C.I. SHALL BE WRAPPED WITH 8 MIL. MIN. THICKNESS POLYETHYLENE.
  2. VALVE NUT SHALL BE CENTERED.
  3. VALVE BOX SHALL BE PLUMB.
  4. SEE MATERIAL SPECIFICATIONS FOR VALVE BOX WITH GREATER THAN BURIED DEPTH OF 4.5 FT.

**PARKER WATER & SANITATION DISTRICT  
VALVE BOX DETAIL**

SCALE: NONE	DATE: 2/98
APPROVED: PVR	5/98 10/16 4/99 12/07 1/16
DIRECTOR OF ENGINEERING	

2016 REVISION

SHEET W3.10



**METER YOKE DISTANCE**

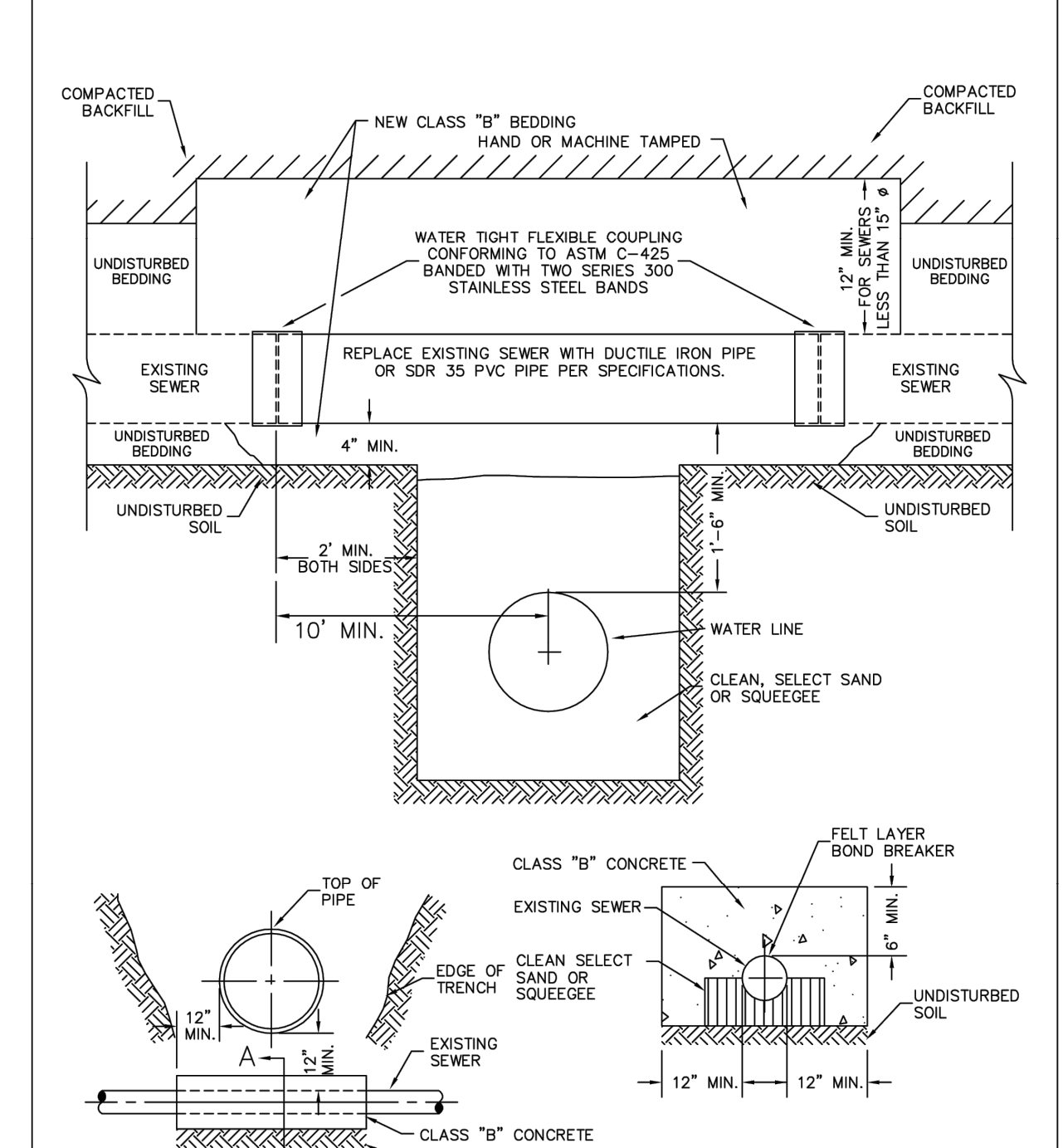
- NOTES**
- 1 - PIPE JOINT SHALL BE THREADED OR SOLDERED WITH SILVER SOLDER.
  - 2 - INSTALLATION MUST ALLOW ACCESS FOR MAINTENANCE AND BE PROTECTED FROM FREEZING.
  - 3 - SEE WATER SYSTEM SPECIFICATIONS FOR GENERAL METER NOTES.
  - 4 - COMPANION FLANGES SHALL BE BRASS.
  - 5 - METER SUPPORT SHALL BE EITHER CONCRETE OR ADJ. STEEL PIPE (SEE SHEET W3.10).
  - 6 - 1.0' MINIMUM CLEARANCE AROUND BACKFLOW DEVICE.
  - 7 - FLOOR DRAIN TO BE 2X PIPE SIZE.
  - 8 - FOR IRRIGATION USES, ADD RAIN SENSOR AND SMART E.T. CONTROLLER.

**PARKER WATER & SANITATION DISTRICT  
INSIDE SETTING FOR  
1 1/2" & 2" METER**

SCALE: NONE	DATE: 2/98
APPROVED: PVR	8/99 01/02 01/16 2/00 06/05 10/16 4/01 07/06
DIRECTOR OF ENGINEERING	

2016 REVISION

SHEET W5.14



**SEWER CROSSING UNDER LESS THAN 18\"/>**

**NOTE**

1. PIPE SHALL BE WRAPPED WITH FELT LAYER BEFORE ENCASEING.

**PARKER WATER & SANITATION DISTRICT  
CROSSING STORM & SANITARY SEWERS**

SCALE: NONE	DATE: 2/98
APPROVED: PVR	1/16 10/16
DIRECTOR OF ENGINEERING	

2016 REVISION

SHEET W4.7

**LINCOLN PROFESSIONAL PARK FILING NO. 1  
LOT 2, PARKER, CO  
7 BREW - CONSTRUCTION DOCUMENTS  
DETAILS**

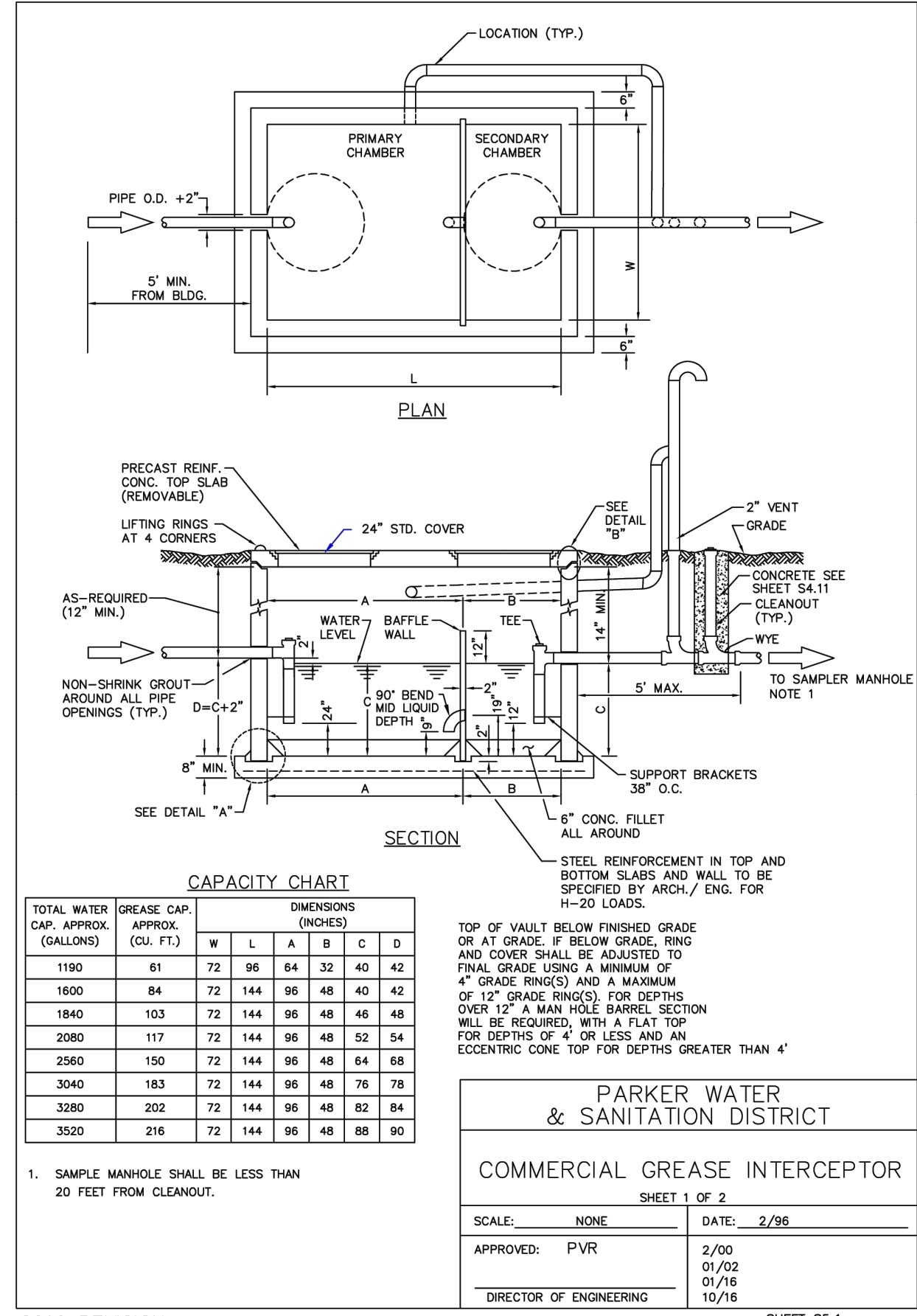
**PRELIMINARY**  
 FOR REVIEW ONLY  
 NOT FOR CONSTRUCTION  
**Kimley-Horn**  
 PROJECT NO. 296237001  
 SHEET 296237001\_SSWR  
**C5.0**

**Kimley-Horn**  
 6200 South Syracuse Way, Suite 300  
 Greenwood, Colorado 80111 (303) 228-2300

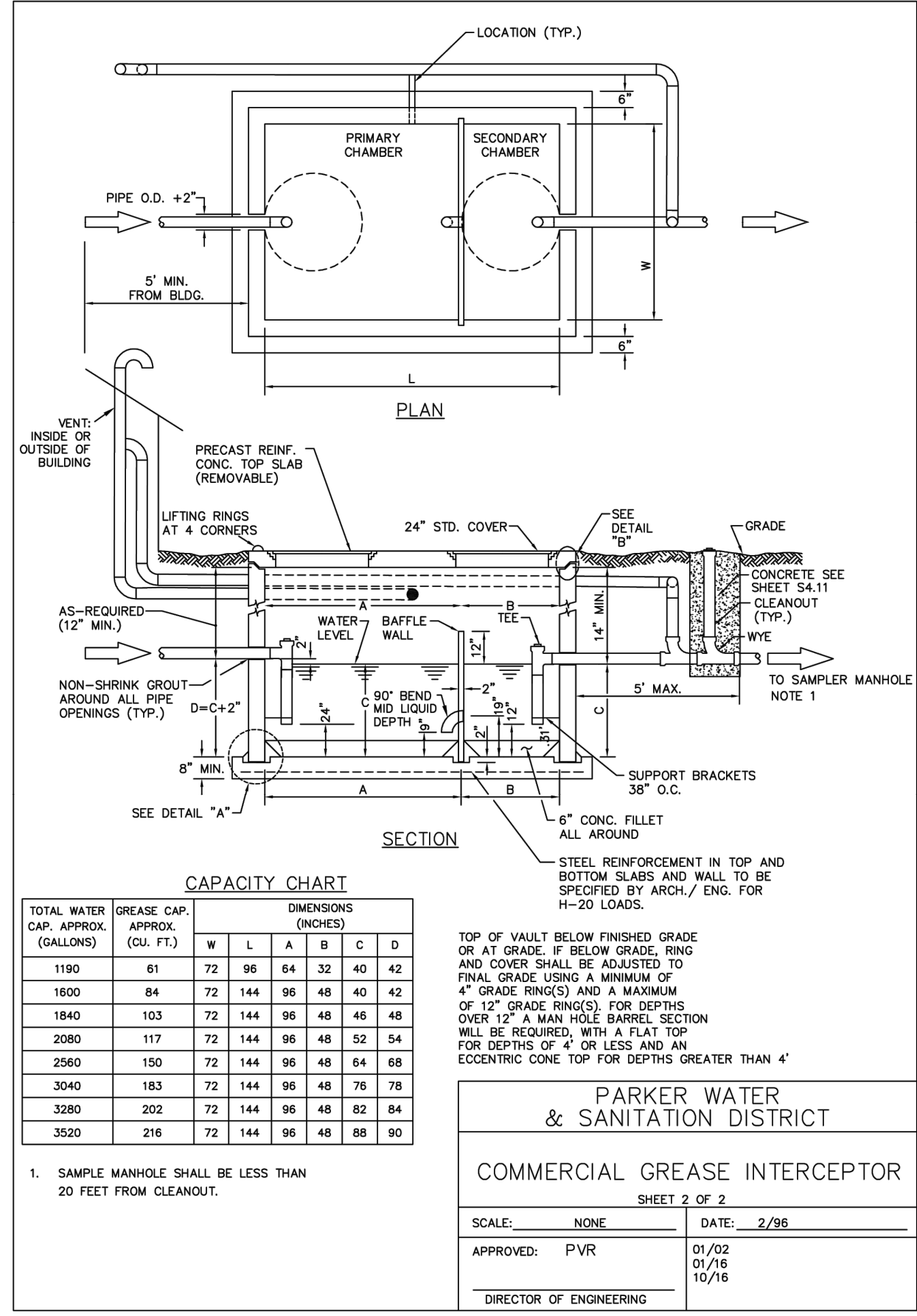
NO.	REVISION	BY	DATE

DESIGNED BY: MMR  
 DRAWN BY: KNP  
 CHECKED BY: KEW  
 DATE: 12/2/25

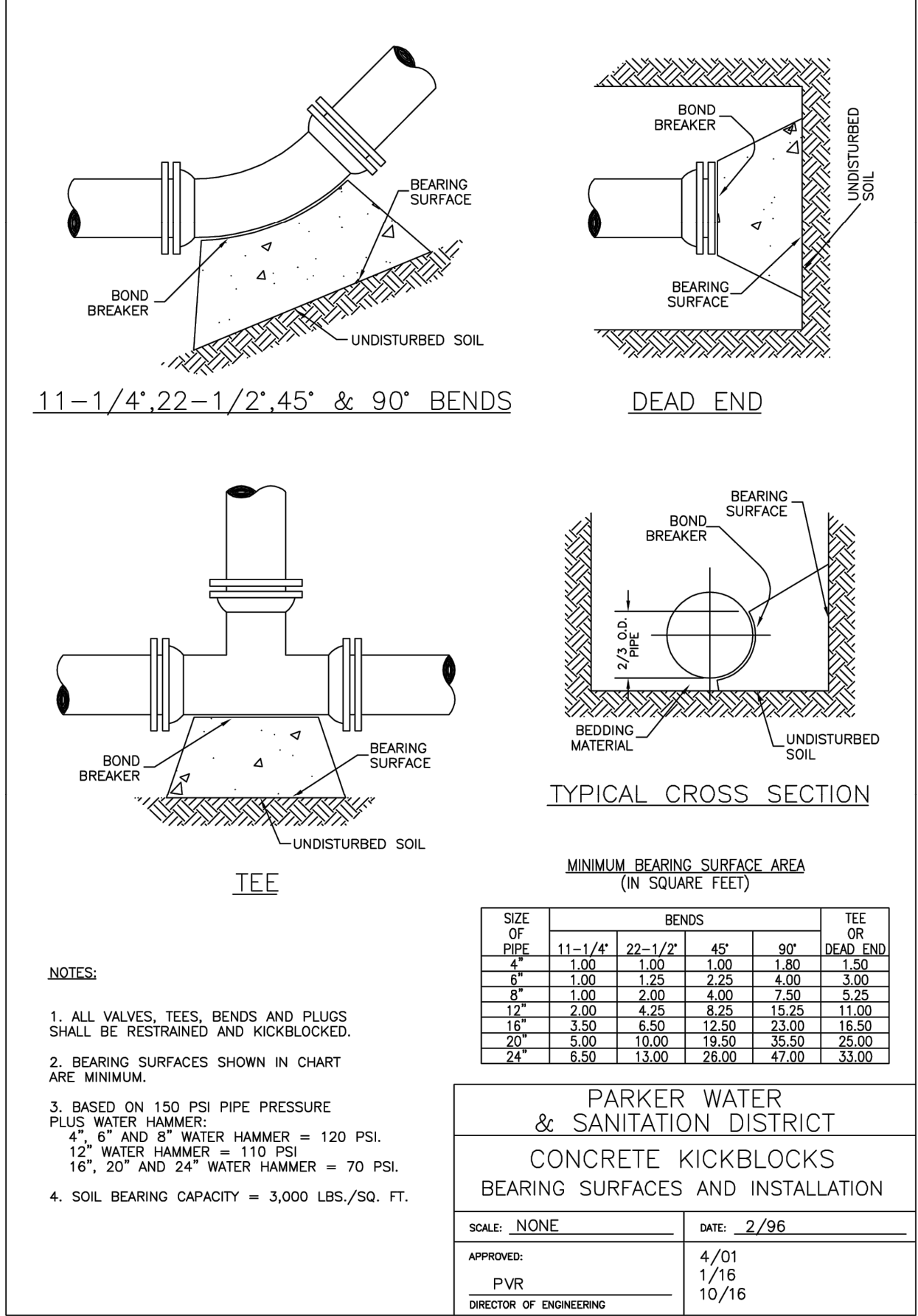
THIS DOCUMENT, TOGETHER WITH THE CONCEPTS AND DESIGNS PRESENTED HEREIN, AS AN INSTRUMENT OF SERVICE, IS INTENDED ONLY FOR THE SPECIFIC PURPOSE AND CLIENT FOR WHICH IT WAS PREPARED. REUSE OF AND IMPROPER RELIANCE ON THIS DOCUMENT WITHOUT WRITTEN AUTHORIZATION AND ADAPTATION BY KIMLEY-HORN AND ASSOCIATES, INC. SHALL BE WITHOUT LIABILITY TO KIMLEY-HORN AND ASSOCIATES, INC.



2016 REVISION SHEET SS.1



2016 REVISION SHEET SS.2



2016 REVISION SHEET W3.18

NO.	REVISION	BY	DATE	APPR.

**Kimley»Horn**  
 © 2025 KIMLEY-HORN AND ASSOCIATES, INC.  
 6200 South Syracuse Way, Suite 300  
 Greenwood, Colorado 80111 (303) 228-2300

DESIGNED BY: MMR  
 DRAWN BY: KNP  
 CHECKED BY: KEW  
 DATE: 12/2/25

LINCOLN PROFESSIONAL PARK FILING NO. 1  
 LOT 2, PARKER, CO  
 7 BREW - CONSTRUCTION DOCUMENTS  
 DETAILS

PRELIMINARY  
 FOR REVIEW ONLY  
 NOT FOR  
 CONSTRUCTION  
**Kimley»Horn**  
 Kimley-Horn and Associates, Inc.

PROJECT NO.  
 296237001  
 SHEET  
 296237001\_SSWR  
**C5.1**