



THIS DOCUMENT, TOGETHER WITH THE CONCEPTS AND DESIGNS PRESENTED HEREIN, AS AN INSTRUMENT OF SERVICE, IS INTENDED ONLY FOR THE SPECIFIC PURPOSE AND CLIENT FOR WHICH IT WAS PREPARED. REUSE OF AND IMPROPER RELIANCE ON THIS DOCUMENT WITHOUT WRITTEN AUTHORIZATION AND ADAPTATION BY KIMLEY-HORN AND ASSOCIATES, INC. SHALL BE WITHOUT LIABILITY TO KIMLEY-HORN AND ASSOCIATES, INC.

**PARKER WATER AND SANITATION GENERAL NOTES**

- 1. ALL MATERIALS AND WORKMANSHIP SHALL BE IN CONFORMANCE WITH THE PWSO ENGINEERING STANDARDS AND SPECIFICATIONS, LATEST VERSION.
2. THE CONTRACTOR SHALL CONTACT ALL APPROPRIATE UTILITY COMPANIES AND THE TOWN OF PARKER, DOUGLAS COUNTY AND OTHER NEIGHBORING CITIES AND TOWNS PRIOR TO THE BEGINNING OF ANY CONSTRUCTION. CONTRACTOR SHALL BE RESPONSIBLE FOR LOCATING ANY EXISTING UTILITY (INCLUDING DEPTHS) WHICH MAY CONFLICT WITH THE PROPOSED CONSTRUCTION. ALL EXISTING UTILITIES SHALL BE PROTECTED FROM DAMAGE BY THE CONTRACTOR. DAMAGED UTILITIES SHALL BE REPAIRED BY THE CONTRACTOR AT HIS OWN EXPENSE.
3. ALL ITEMS SHOWN ON THE PLANS AS EXISTING ARE SHOWN IN APPROXIMATE LOCATIONS ONLY. THE ACTUAL LOCATIONS MAY VARY FROM THE PLANS, ESPECIALLY IN THE CASE OF UNDERGROUND UTILITIES. WHENEVER THE CONTRACTOR DISCOVERS A DISCREPANCY IN LOCATIONS CONTACT THE PWSO IMMEDIATELY.
4. PWSO ENGINEER AND OTHER APPROVING AGENCIES ARE TO BE NOTIFIED 48 HOURS PRIOR TO CONSTRUCTION.
5. THE CONTRACTOR SHALL OBTAIN, AT HIS EXPENSE, ALL PERMITS NECESSARY TO PERFORM THE PROPOSED WORK.
6. ALL CONCRETE SHALL BE A MINIMUM OF CLASS A, 6 SACK, TYPE II, 3000-POUND COMPRESSION STRENGTH.
7. THE DESIGN ENGINEER SHALL SUBMIT ONE (1) SET OF "AS-BUILT" DRAWINGS AND ELECTRONIC FILES TO THE DISTRICT ENGINEER FOR APPROVAL BY DISTRICT. AFTER APPROVAL HAS BEEN GRANTED BY THE DISTRICT ENGINEER, FULL SIZE PRINTS SHALL BE TRANSMITTED TO THE PWSO OFFICE.
8. NO WORK SHALL BE BACKFILLED UNTIL THE CONSTRUCTION HAS BEEN INSPECTED AND APPROVED FOR BACKFILLING BY THE DISTRICT ENGINEER OR REPRESENTATIVE OF THE DISTRICT ENGINEER. ALL BACKFILL MATERIAL SHALL BE COMPACTED TO 95% STANDARD PROCTOR DENSITY. COMPACTION TESTS MUST BE SUBMITTED TO DISTRICT ENGINEER PRIOR TO PROBATIONARY ACCEPTANCE.
9. TRENCHES SHALL BE EXCAVATED AND THE PIPE EXPOSED FOR THE INSPECTION AT ANY LOCATION ON THE PROJECT IF SO ORDERED BY THE INSPECTOR.
10. THE CONTRACTOR WILL BE HELD RESPONSIBLE FOR THE PROPER FUNCTIONING OF LINES (WATER AND DEPTHS) FOR UP TO TWO (2) YEARS FROM THE DATE OF PROBATIONARY ACCEPTANCE OF THE LINES BY THE DISTRICT. ANY MALFUNCTION DURING THIS PERIOD OF GUARANTEE SHALL BE REMEDIATED BY THE CONTRACTOR TO THE SATISFACTION OF THE DISTRICT ENGINEER AT NO EXPENSE TO THE DISTRICT.
11. SURFACE GRADES ARE TO BE WITHIN PLUS OR MINUS ONE FOOT OF FINISHED GRADE AND VERIFICATION OF COMPACTION RESULTS OBTAINED PRIOR TO THE INSTALLATION OF WATER AND SEWER LINES. RESULTS MUST BE SUBMITTED TO THE DISTRICT ENGINEER.
12. ALL SERVICES WILL BE PERMANENTLY MARKED ON CURB FACE AS FOLLOWS:
"x" FOR SANITARY SERVICE SEWERS
"v" FOR WATER SERVICES
13. NO TREES ALLOWED IN EASEMENTS OR WITHIN 8' OF WATER OR SANITARY SEWER MAINS IN RIGHT OF WAY.
14. THE CONTRACTOR SHALL HAVE IN HIS POSSESSION AT ALL TIMES ONE (1) SIGNED COPY OF THE PLANS WHICH HAVE BEEN APPROVED BY THE PWSO AND THE DISTRICT ENGINEER AND ONE (1) COPY OF THE LATEST PWSO SPECIFICATION MANUAL.

**SANITARY SEWER NOTES**

- 1. ALL MATERIALS AND WORKMANSHIP SHALL BE IN CONFORMANCE WITH THE PWSO ENGINEERING STANDARDS AND SPECIFICATIONS, LATEST VERSION.
2. ALL SEWER MAINS SHALL BE PVC, ASTM D-3034, SDR 35 OR APPROVED EQUAL. ALL SEWER MAIN SIZE IS 8" IN DIAMETER UNLESS OTHERWISE NOTED.
3. SEWER LINES SHALL BE INSTALLED 5.0 FEET SOUTH OR WEST OF STREET CENTERLINE, UNLESS OTHERWISE SHOWN ON PLANS. SEWER LINES SHALL BE 10.00 FEET FROM WATER LINES EXCEPT WHEN CROSSING EACH OTHER. SEWER LINES WHICH CROSS LESS THAN 1.50 FEET VERTICALLY FROM THE WATER MAIN SHALL BE ENCASED IN CONCRETE AS PER PWSO SPECIFICATIONS. USE RUBBER GASKETS FOR PVC ENCASUREMENT.
4. SEWER RIM ELEVATIONS SHOWN ARE APPROPRIATE ONLY AND ARE NOT TO BE TAKEN AS FINAL ELEVATIONS. RING AND COVER SHALL BE SET IN CENTERED CONCRETE RINGS WITH RAM-NECK FOR ADJUSTMENT TO MATCH FINAL PAVEMENT ELEVATIONS.
5. THE CONTRACTOR AND SURVEY CREW SHALL VERIFY ELEVATIONS OF EXISTING SEWER LINES AND MANHOLES TO BE TIED TO PRIOR TO CONSTRUCTION OR STAKING OF SANITARY SEWER.
6. NO UNDERDRAIN SYSTEM WILL BE ALLOWED TO BE PLACED IN MAINLINE OR SEWER SERVICE TRENCHES.
7. SEWER SERVICE TEES FOR EACH UNIT SHALL BE STAKED BY A SURVEY CREW AND FURNISHED AND INSTALLED BY THE CONTRACTOR. THE CONTRACTOR SHALL FURNISH TO THE ENGINEER "AS CONSTRUCTED" LOCATION OF TEES. SEWER WYES SHALL BE USED RATHER THAN TEES.
8. ALL MANHOLES SHALL BE 48-INCHES IN DIAMETER WITH 24-INCH RING AND COVER, ECCENTRIC CONE UNLESS OTHERWISE SPECIFIED. ALL MANHOLES SHALL HAVE SHAPED INVERTS.
9. PIPE BEDDING SHALL BE CLASS "B" AND SHALL CONFORM TO ASTM C-33 OR D-448 GRADATION NO. 6 OR NO. 67.
10. AT LEAST FIVE (5) DAYS PRIOR TO THE START OF CONSTRUCTION, A PRE-CONSTRUCTION MEETING WILL BE HELD AT THE OFFICE OF THE DISTRICT ENGINEER AND ATTENDED BY THE CONTRACTOR AND REPRESENTATIVES OF THE OTHER APPROVING AGENCIES. IT WILL BE THE RESPONSIBILITY OF THE CONTRACTOR TO CONTACT THE DISTRICT ENGINEER TO SCHEDULE THIS MEETING.
11. THE CONTRACTOR SHALL HAVE IN HIS POSSESSION AT ALL TIMES ONE (1) SIGNED COPY OF THE PLANS WHICH HAVE BEEN APPROVED BY THE PWSO AND THE DISTRICT ENGINEER AND ONE (1) COPY OF THE LATEST PWSO SPECIFICATION MANUAL.
12. ALL SEWER LINES SHALL BE TESTED IN ACCORDANCE WITH THE PWSO STANDARDS AND SPECIFICATIONS PRIOR TO ACCEPTANCE OR ANY CONNECTION TO AN EXISTING SEWER LINE.
13. PRIOR TO STARTING WORK WHERE SEWER MAIN IS TO BE CONNECTED TO EXISTING PWSO SEWER SYSTEMS, THE NEAREST MANHOLE TO THE POINT OF TIE-IN SHALL BE PLUGGED WITH A PLUMBER'S PLUG ON THE INLET SIDE BY THE CONTRACTOR. THIS PLUG SHALL REMAIN IN PLACE UNTIL FINAL PROBATIONARY ACCEPTANCE BY PWSO. THE CONTRACTOR SHALL BE RESPONSIBLE FOR PUMPING AND CLEANING THESE MANHOLES AND REMOVING THE PLUG WHEN INSTRUCTED BY THE DISTRICT.
14. PRIOR TO PROBATIONARY ACCEPTANCE WALK-THROUGH, THE CONTRACTOR SHALL JET CLEAN THE ENTIRE SANITARY SEWER SYSTEM AND PUMP OUT AT THE PLUGGED MANHOLE.

**WATER MAIN NOTES**

- 1. ALL MATERIALS AND WORKMANSHIP SHALL BE IN CONFORMANCE WITH THE PWSO ENGINEERING STANDARDS AND SPECIFICATIONS, LATEST REVISION.
2. ALL WATER MAINS SHALL BE PER PWSO MATERIALS SPECIFICATIONS. ALL MATERIALS IN CONTACT WITH POTABLE WATER SHALL BE SUITABLE FOR CHLORINATED AND CHLORAMINATED WATER.
3. ALL BENDS, PLUGS, REDUCERS, AND FIRE HYDRANTS TO BE RODDED OR MEGA-LUGGED. ALL FITTINGS SHALL BE WRAPPED PER PWSO MATERIALS SPECIFICATIONS.
4. THERE SHALL BE A MINIMUM COVER OF 4.5 FEET OVER ALL WATER MAINS.
5. FIRE HYDRANTS SHALL CONFORM TO AWWA C-502" DRY BARREL FIRE HYDRANTS" PIPE HYDRANT ASSEMBLIES PER PWSO SPECIFICATIONS.
6. ALL BENDS, TEES, FIRE HYDRANTS, BLOW-OFFS, AND PLUGS AT DEAD-END MAINS SHALL BE PROTECTED FROM THRUST WITH CONCRETE THRUST BLOCKS.
7. PRECAUTIONS SHALL BE TAKEN TO PROTECT THE INTERIOR OF PIPES, FITTINGS, AND VALVES AGAINST CONTAMINATION. ALL OPENINGS IN THE PIPELINE SHALL BE CLOSED WITH WATERTIGHT PLUGS WHEN PIPE LAYING IS STOPPED AT THE CLOSE OF THE DAY'S WORK OR FOR OTHER REASONS, SUCH AS REST BREAKS OR MEAL PERIODS.
8. VALVES IN STREETS ARE TO BE LOCATED AT PROPERTY LINE EXTENSIONS EXCEPT FOR TAPPING TEES; WHERE AN ADDITIONAL VALVE SHALL BE PLACED ON THE TAPPING TEE. OTHER LOCATIONS SHOWN ON THE PLANS.
9. WHEN NECESSARY TO LOWER OR RAISE WATER LINES AT STORM DRAINS AND OTHER UTILITY CROSSING, A MINIMUM CLEARANCE OF 1.5 FEET SHALL BE MAINTAINED BETWEEN OUTSIDE OF PIPES.
10. THE CONTRACTOR SHALL NOTIFY THE PWSO AT LEAST 48 HOURS PRIOR TO ANY CONSTRUCTION. IF WORK IS SUSPENDED FOR ANY PERIOD OF TIME AFTER INITIAL START-UP, THE CONTRACTOR MUST NOTIFY THE DISTRICT ENGINEER 48 HOURS PRIOR TO RE-START.
11. PIPE BEDDING SHALL BE A CLEAN, WELL-GRADED SAND OR SQUEEGEE SAND IN ACCORDANCE WITH PWSO STANDARDS AND SPECIFICATIONS, LATEST REVISION.
12. THE CONTRACTOR SHALL NOTIFY THE PUBLIC UTILITY COMPANIES AND DETERMINE THE LOCATION OF ALL EXISTING UNDERGROUND UTILITIES PRIOR TO PROCEEDING WITH THE EXCAVATION. ALL WORK PERFORMED IN THE AREA OF THE PUBLIC UTILITIES SHALL BE PERFORMED ACCORDING TO THE REQUIREMENTS OF THESE AGENCIES.
13. COMPACTION OF ALL TRENCHES MUST BE ATTAINED IN ACCORDANCE WITH THE SOILS REPORTS AND COMPACTION TEST RESULTS SUBMITTED TO THE DISTRICT ENGINEER PRIOR TO PROBATIONARY ACCEPTANCE.
14. AT LEAST FIVE (5) DAYS PRIOR TO THE START OF CONSTRUCTION, A PRE-CONSTRUCTION MEETING WILL BE HELD AT THE OFFICE OF THE DISTRICT ENGINEER AND ATTENDED BY THE CONTRACTOR, DESIGN ENGINEER, AND REPRESENTATIVE OF OTHER APPROVING AGENCIES.
15. CHLORINATION AND FLUSHING: ALL WATER MAINS SHALL BE INSTALLED AND CHLORINATED PER PWSO SPECIFICATIONS. CHLORINATION OF FINISHED PIPELINE COMPLETED BEFORE HYDROSTATIC TESTING.
16. HYDROSTATIC TESTING: ALL WATER MAINS SHALL BE TESTED PER THE REQUIREMENTS OF THE PWSO SPECIFICATIONS UP TO MINIMUM OF 150 PSI IN THE PRESENCE OF A PWSO INSPECTOR/ENGINEER.

Table with columns: NO., REVISION, BY, DATE. Contains a grid for tracking changes.

Kimley»Horn logo and contact information: © 2025 KIMLEY-HORN AND ASSOCIATES, INC. 6200 South Syracuse Way, Suite 300 Greenwood, Colorado 80111 (303) 228-2300

DESIGNED BY: MMR
DRAWN BY: KP
CHECKED BY: KEW
DATE: 7/7/25

LINCOLN PROFESSIONAL PARK FILING NO. 1
LOT 2, PARKER, CO
7 BREW - PWSO CONSTRUCTION DOCUMENTS
GENERAL NOTES

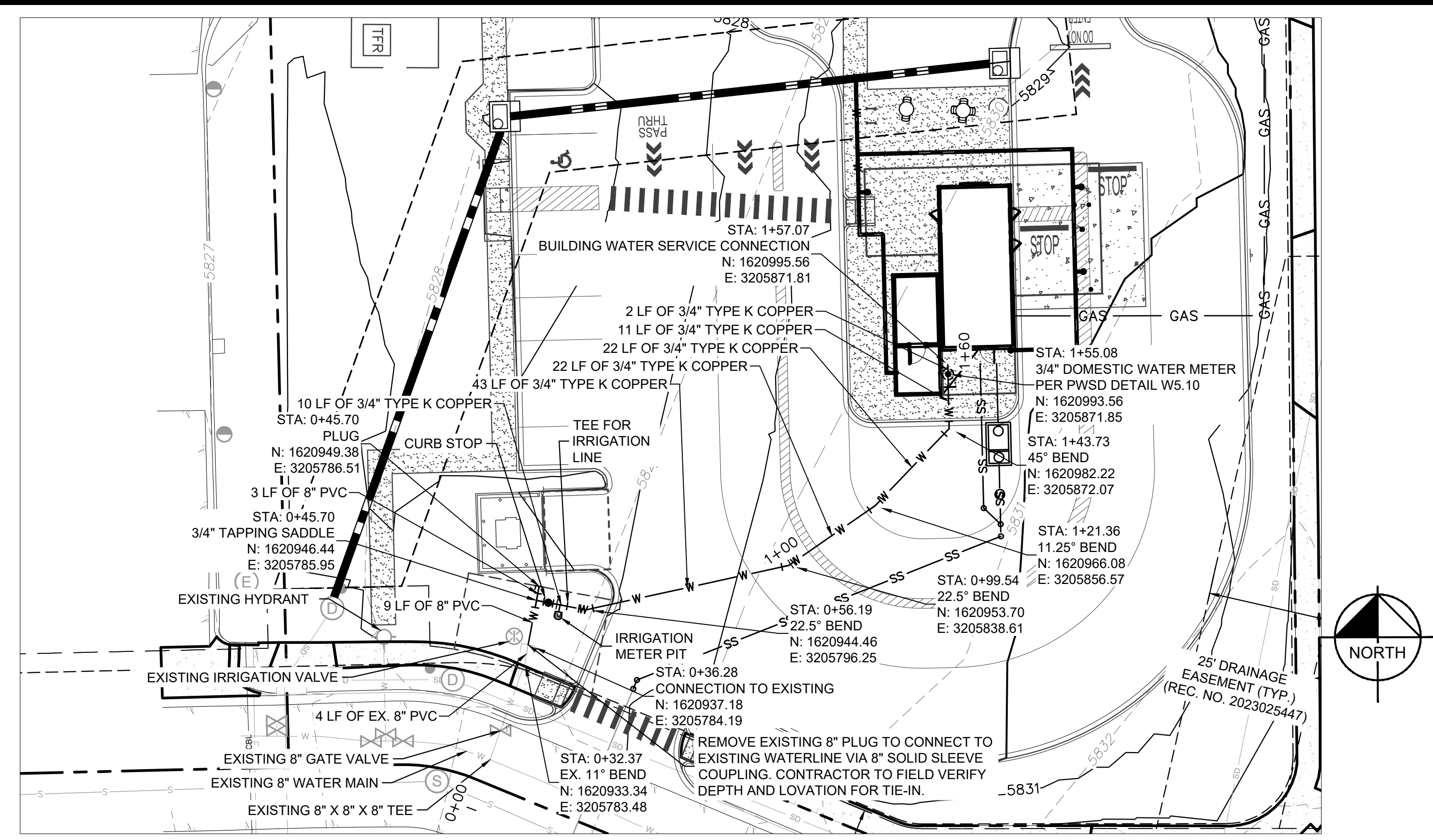
PRELIMINARY
FOR REVIEW ONLY
NOT FOR
CONSTRUCTION
Kimley»Horn
Kimley-Horn and Associates, Inc.

PROJECT NO.
296237001
SHEET
296237001\_CV--PWSO

C1.1



THIS DOCUMENT, TOGETHER WITH THE CONCEPTS AND DESIGNS PRESENTED HEREIN, AS AN INSTRUMENT OF SERVICE, IS INTENDED ONLY FOR THE SPECIFIC PURPOSE AND CLIENT FOR WHICH IT WAS PREPARED. REUSE OF AND IMPROPER RELIANCE ON THIS DOCUMENT WITHOUT WRITTEN AUTHORIZATION AND ADAPTATION BY KIMLEY-HORN AND ASSOCIATES, INC. SHALL BE WITHOUT LIABILITY TO KIMLEY-HORN AND ASSOCIATES, INC.

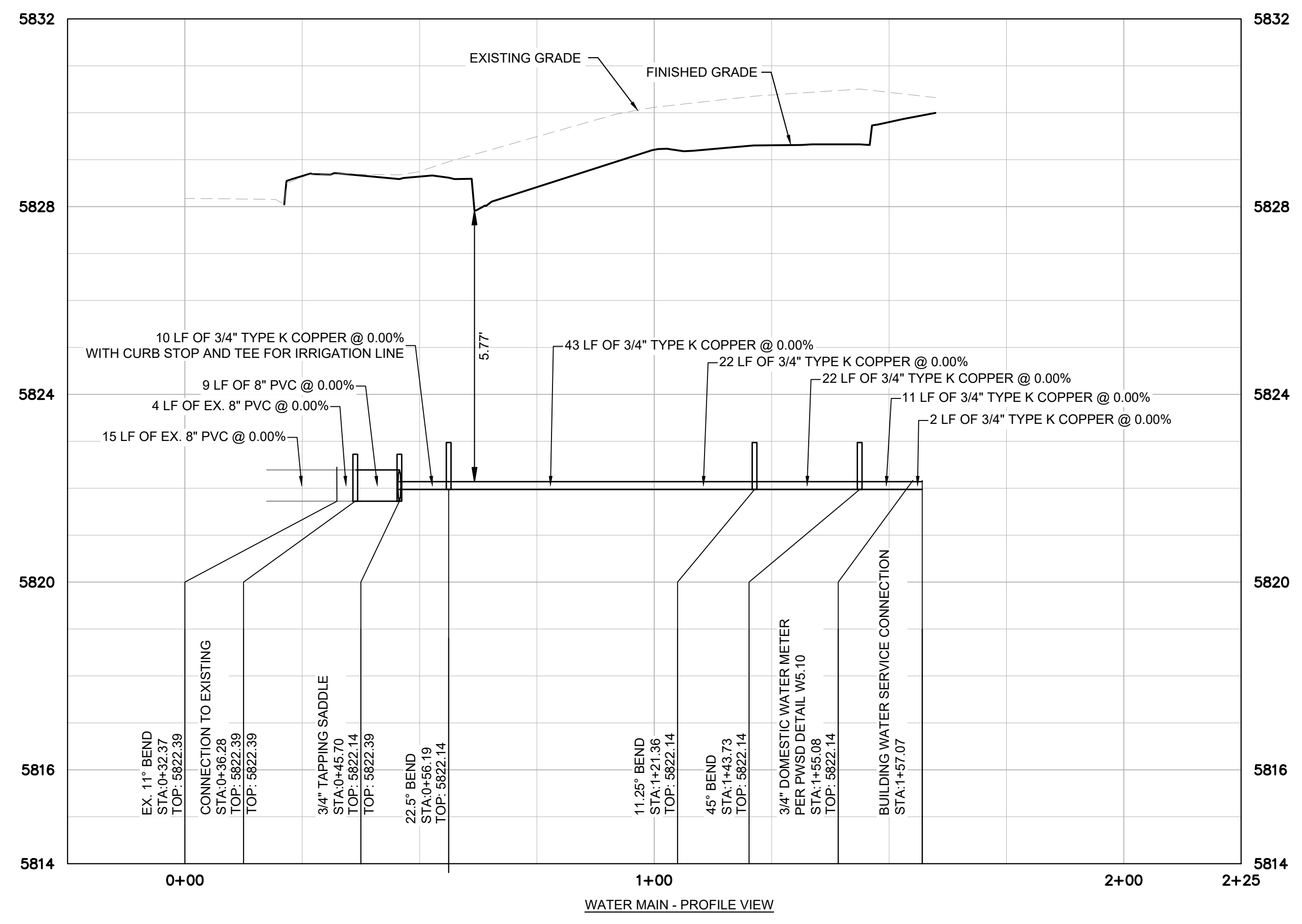


WATER MAIN - PLAN VIEW

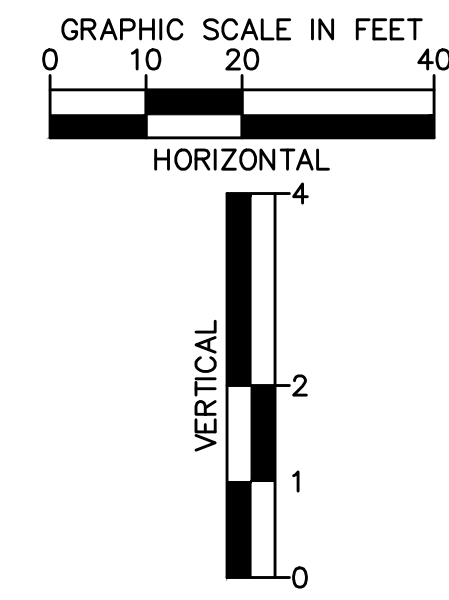
**LEGEND**

PROPERTY LINE	---
EASEMENT	---
BUILDING OUTLINE	---
PROPOSED GAS LINE	— GAS — GAS
PROPOSED SANITARY SEWER LINE	— S — S
PROPOSED WATER LINE	— W — W
PROPOSED STORM LINE	— SD — SD
EXISTING GAS LINE	— GAS — GAS
EXISTING SANITARY SEWER LINE	— S — S
EXISTING WATER LINE	— W — W
EXISTING STORM LINE	— SD — SD
PROPOSED CONTOUR	100 — 99
EXISTING CONTOUR	100 — 99
EXISTING FIRE HYDRANT	⊕
PROPOSED WATER BENDS	⌒
PROPOSED WATER METER	⊙

- NOTES:**
- UTILITY CONNECTIONS TERMINATE 5' FROM BUILDING ENVELOPE. SEE ARCHITECT AND MEP PLANS FOR CONTINUATION.
  - ALL UTILITY PIPE LENGTHS ON PLANS ARE SHOWN FOR REFERENCE AND COORDINATION. PIPE LENGTHS ARE NOT SHOWN FOR BIDDING OR ESTIMATING PURPOSES.
  - ALL DIMENSIONS ARE SHOWN FROM CENTER OF PIPE TO CENTER OF PIPE UNLESS OTHERWISE NOTED.
  - THE EXISTING UTILITIES SHOWN ARE BASED ON AVAILABLE RECORDS. THE CONTRACTOR MUST FIELD DETERMINE THE LOCATION AND DEPTH OF ALL UTILITIES PRIOR TO ANY CONSTRUCTION. REPORT DISCREPANCIES AND POTENTIAL CONFLICTS WITH PROPOSED UTILITIES TO ENGINEER PRIOR TO INSTALLATION OF ANY PIPING.
  - CONTRACTOR TO CONFIRM ALL UTILITY CROSSINGS PRIOR TO CONSTRUCTION.



WATER MAIN - PROFILE VIEW



NO.	REVISION	BY	DATE

**Kimley»Horn**

© 2025 KIMLEY-HORN AND ASSOCIATES, INC.  
6200 South Syracuse Way, Suite 300  
Greenwood, Colorado 80111 (303) 228-2300

DESIGNED BY: MMR  
DRAWN BY: KNP  
CHECKED BY: KEW  
DATE: 12/2/25

LINCOLN PROFESSIONAL PARK FILING NO. 1  
LOT 2, PARKER, CO  
7 BREW - CONSTRUCTION DOCUMENTS  
WATER LINE PLAN AND PROFILE

PRELIMINARY  
FOR REVIEW ONLY  
NOT FOR CONSTRUCTION

**Kimley»Horn**  
Kimley-Horn and Associates, Inc.

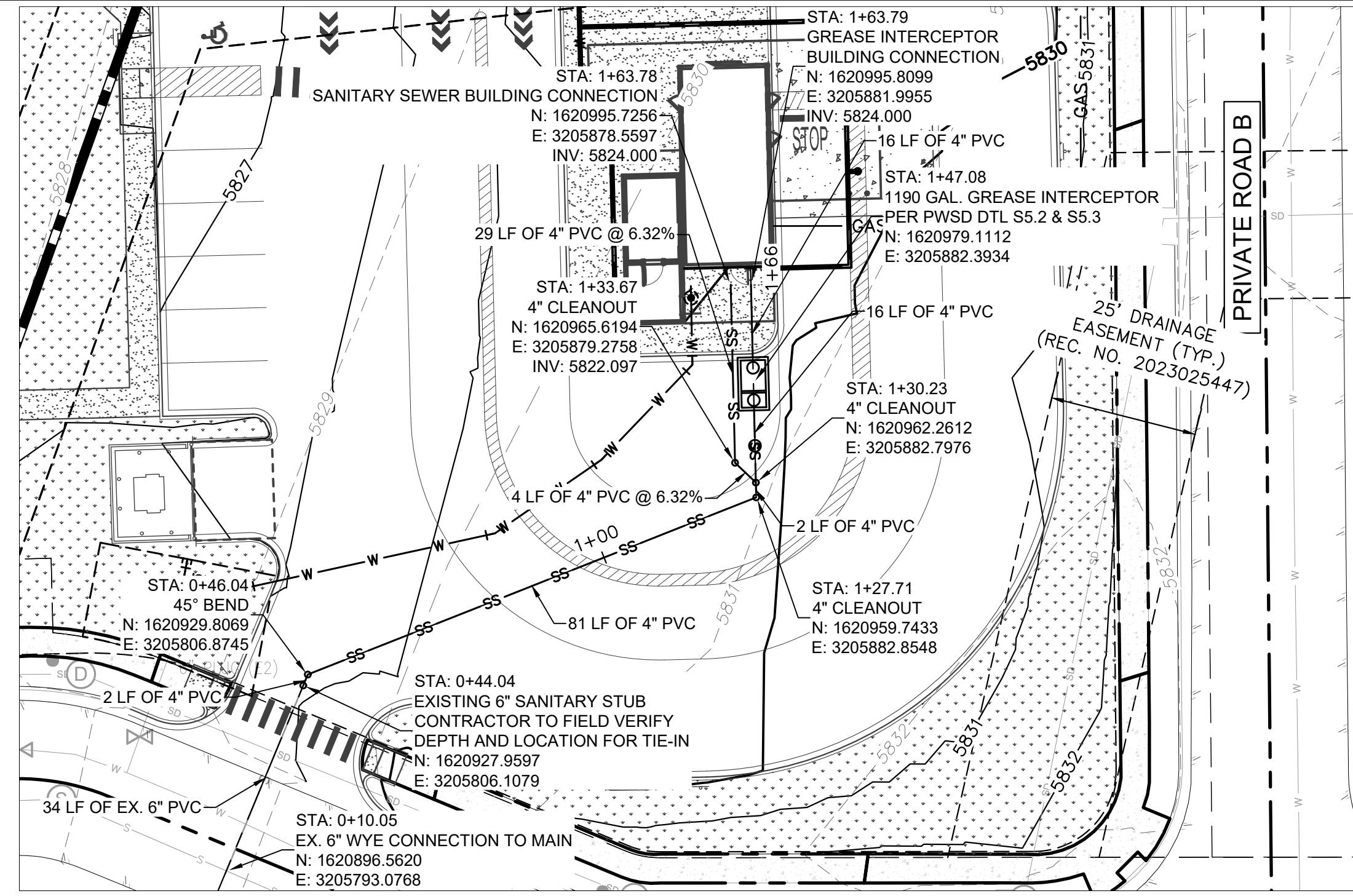
PROJECT NO.  
296237001

SHEET  
296237001\_WATR

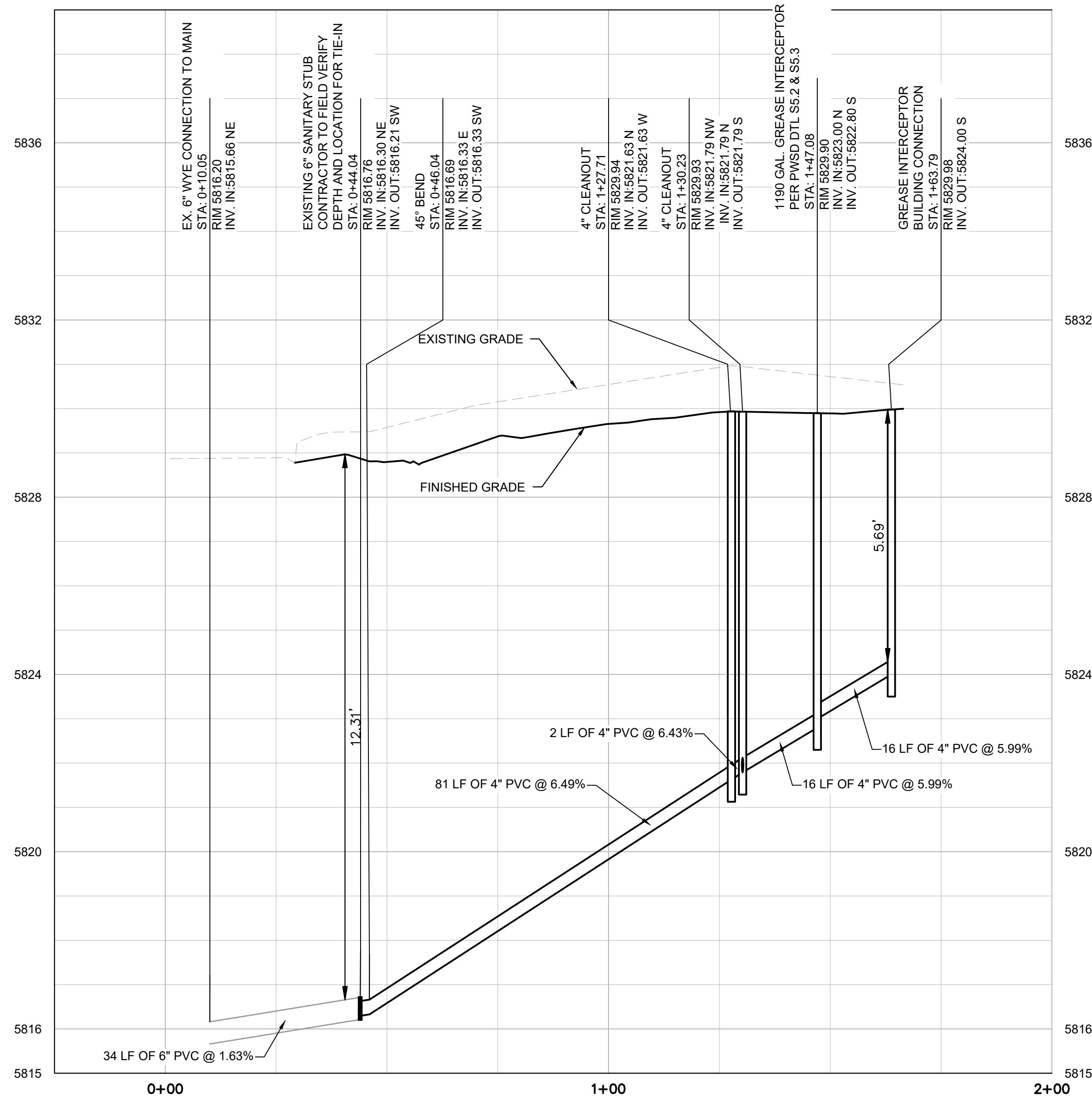
C3.0



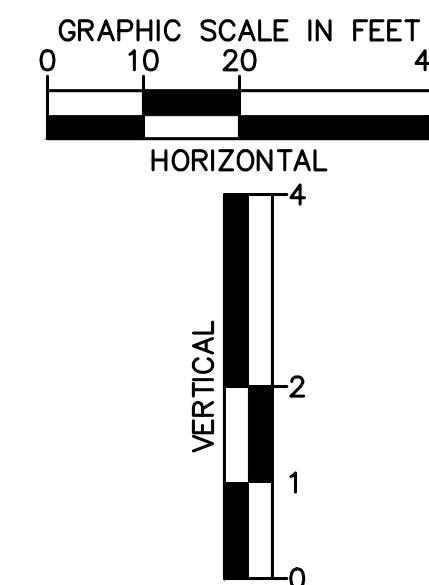
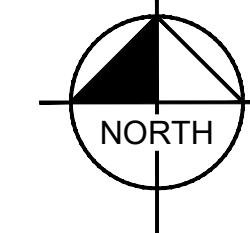
THIS DOCUMENT, TOGETHER WITH THE CONCEPTS AND DESIGNS PRESENTED HEREIN, AS AN INSTRUMENT OF SERVICE, IS INTENDED ONLY FOR THE SPECIFIC PURPOSE AND CLIENT FOR WHICH IT WAS PREPARED. REUSE OF AND IMPROPER RELIANCE ON THIS DOCUMENT WITHOUT WRITTEN AUTHORIZATION AND ADAPTATION BY KIMLEY-HORN AND ASSOCIATES, INC. SHALL BE WITHOUT LIABILITY TO KIMLEY-HORN AND ASSOCIATES, INC.



SANITARY SEWER MAIN - PLAN VIEW



SANITARY SEWER MAIN - PROFILE VIEW



**LEGEND**

PROPERTY LINE	---
EASEMENT	---
BUILDING OUTLINE	---
PROPOSED GAS LINE	— GAS — GAS —
PROPOSED SANITARY SEWER LINE	— S — S —
PROPOSED WATER LINE	— W — W —
PROPOSED STORM LINE	— SD — SD —
EXISTING GAS LINE	— GAS — GAS —
EXISTING SANITARY SEWER LINE	— S — S —
EXISTING WATER LINE	— W — W —
EXISTING STORM LINE	— SD — SD —
PROPOSED CONTOUR	— 100 — 99 —
EXISTING CONTOUR	— 100 — 99 —
EXISTING SANITARY SEWER MANHOLE	⊙
EXISTING SEWER CLEANOUT	○
PROPOSED SANITARY SEWER MANHOLE	⊙
PROPOSED SEWER CLEANOUT	○

**NOTES:**

1. UTILITY CONNECTIONS TERMINATE 5' FROM BUILDING ENVELOPE. SEE ARCHITECT AND MEP PLANS FOR CONTINUATION.
2. ALL UTILITY PIPE LENGTHS ON PLANS ARE SHOWN FOR REFERENCE AND COORDINATION. PIPE LENGTHS ARE NOT SHOWN FOR BIDDING OR ESTIMATING PURPOSES.
3. ALL DIMENSIONS ARE SHOWN FROM CENTER OF PIPE TO CENTER OF PIPE UNLESS OTHERWISE NOTED.
4. THE EXISTING UTILITIES SHOWN ARE BASED ON AVAILABLE RECORDS. THE CONTRACTOR MUST FIELD DETERMINE THE LOCATION AND DEPTH OF ALL UTILITIES PRIOR TO ANY CONSTRUCTION. REPORT DISCREPANCIES AND POTENTIAL CONFLICTS WITH PROPOSED UTILITIES TO ENGINEER PRIOR TO INSTALLATION OF ANY PIPING.
5. CONTRACTOR TO CONFIRM ALL UTILITY CROSSINGS PRIOR TO CONSTRUCTION.

NO.	REVISION	BY	DATE	APPR

**Kimley»Horn**

© 2025 KIMLEY-HORN AND ASSOCIATES, INC.  
6200 South Syracuse Way, Suite 300  
Greenwood, Colorado 80111 (303) 228-2300

DESIGNED BY: MMR  
DRAWN BY: KNP  
CHECKED BY: KEW  
DATE: 12/2/25

LINCOLN PROFESSIONAL PARK FILING NO. 1  
LOT 2, PARKER, CO  
7 BREW - CONSTRUCTION DOCUMENTS  
SANITARY SEWER PLAN & PROFILE

PRELIMINARY  
FOR REVIEW ONLY  
NOT FOR  
CONSTRUCTION  
**Kimley»Horn**  
Kimley-Horn and Associates, Inc.

PROJECT NO.  
296237001

SHEET  
296237001\_SSWR

C4.0



THIS DOCUMENT, TOGETHER WITH THE CONCEPTS AND DESIGNS PRESENTED HEREIN, AS AN INSTRUMENT OF SERVICE, IS INTENDED ONLY FOR THE SPECIFIC PURPOSE AND CLIENT FOR WHICH IT WAS PREPARED. REUSE OF AND IMPROPER RELIANCE ON THIS DOCUMENT WITHOUT WRITTEN AUTHORIZATION AND ADAPTATION BY KIMLEY-HORN AND ASSOCIATES, INC. SHALL BE WITHOUT LIABILITY TO KIMLEY-HORN AND ASSOCIATES, INC.

**PIPE BEDDING:**

(a) **Installation of Bedding and Pipe:** After completion of the trench excavation and proper preparation of the foundation, six inches (6") of bedding material shall be placed on the trench bottom for support under the pipe. Spot holes shall be dug deep enough to provide a minimum of two inches (2") of clearance between the bell and bedding material. All pipe shall be installed in such a manner as to insure full support of the pipe barrel over its entire length. After the pipe is adjusted for line and grade, and the joint is made, the bedding material shall be carefully placed and tamped under the haunches of the pipe and in the previously dug bell holes.

Tamping is herein defined as the act of placing approved bedding material under the haunches of the pipe, paying particular attention to voids, bell holes, and sling holes. The purpose of tamping is to ensure uniform support for the pipe.

The limits of bedding shall be from six inches (6") below the bottom of the pipe to twelve inches (12") above the top of the pipe. Approved backfill may then be installed to the groundline. See Chapter 2 of these Standards for backfill and compaction of backfill.

Compaction of bedding is not required. The only requirement is sufficient tamping to achieve uniform support under the pipe. See Sheet W4.1 of the Standard Details for a typical trench cross section.

(b) **Bedding Material:** The bedding material shall be a clean well-graded sand or squeegee sand and shall conform to the following limits when tested by means of laboratory sieves:

**Well-Graded Sand for (24-inch or large diameter)**

Sieve Size	Total Percent Passing by Weight
3/8 inch	100
No. 4	70-100
No. 8	35-65
No. 16	20-80
No. 30	8-60
No. 50	2-30
No. 100	1-10
No. 200	0-3

**Squeegee Sand**  
for use with 20-inch or smaller

Sieve Size	Total Percent Passing by Weight
3/8 inch	100
No. 200	0-3

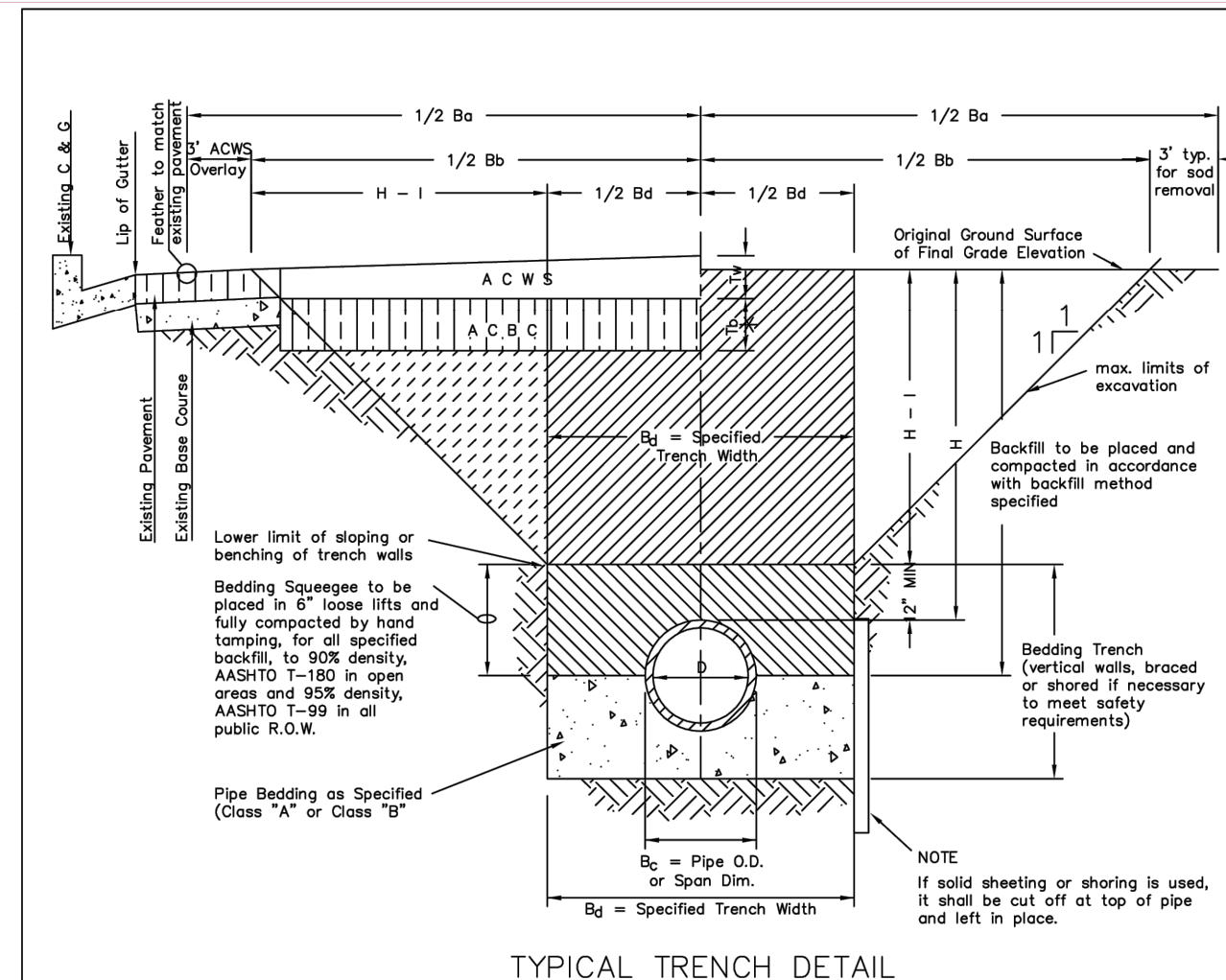
If approved by the District, fines from the trench walls and spoils pile may be used to provide uniform support for the pipe. No rock or stone larger than that allowed by the sieve analysis, or any other detrimental substance, shall be placed closer to the pipe than six inches (6"). Approved bedding materials shall be stockpiled on the jobsite to be used in the event natural materials become unsatisfactory. The District reserves the right to require the use of the specified bedding material at any time.

**PARKER WATER & SANITATION DISTRICT  
PIPE BEDDING**

SCALE: NONE	DATE: 2/96
APPROVED: PVR	5/98 2/00 1/16 10/16
DIRECTOR OF ENGINEERING	

2016 REVISION

SHEET W4.2



**TYPICAL TRENCH DETAIL**

- NOTES:**
1. Sloping or benching of trench side walls, where permitted shall be in accordance with applicable Federal, State and Local safety requirements.
  2. Trench shall be braced and shored as necessary to afford safe working conditions or to protect adjacent utilities, structures, etc. Unless otherwise specified on the plans, no pavement will be made for removal, replacement or relocation of curb and gutter, utilities, sidewalk, structures, etc. outside the maximum limits of excavation as shown and the contractor shall be responsible for protection of same.
  3. If dimension  $T_0$  is  $\leq 5'$ , then existing asphalt pavement shall be removed and replaced up to the gutter. Maximum asphalt pay width,  $B_2$  &  $B_3$  shall then be based upon this actual width.

**TABLE II  
ASPHALT AND BASE COURSE REPLACEMENT SCHEDULE**

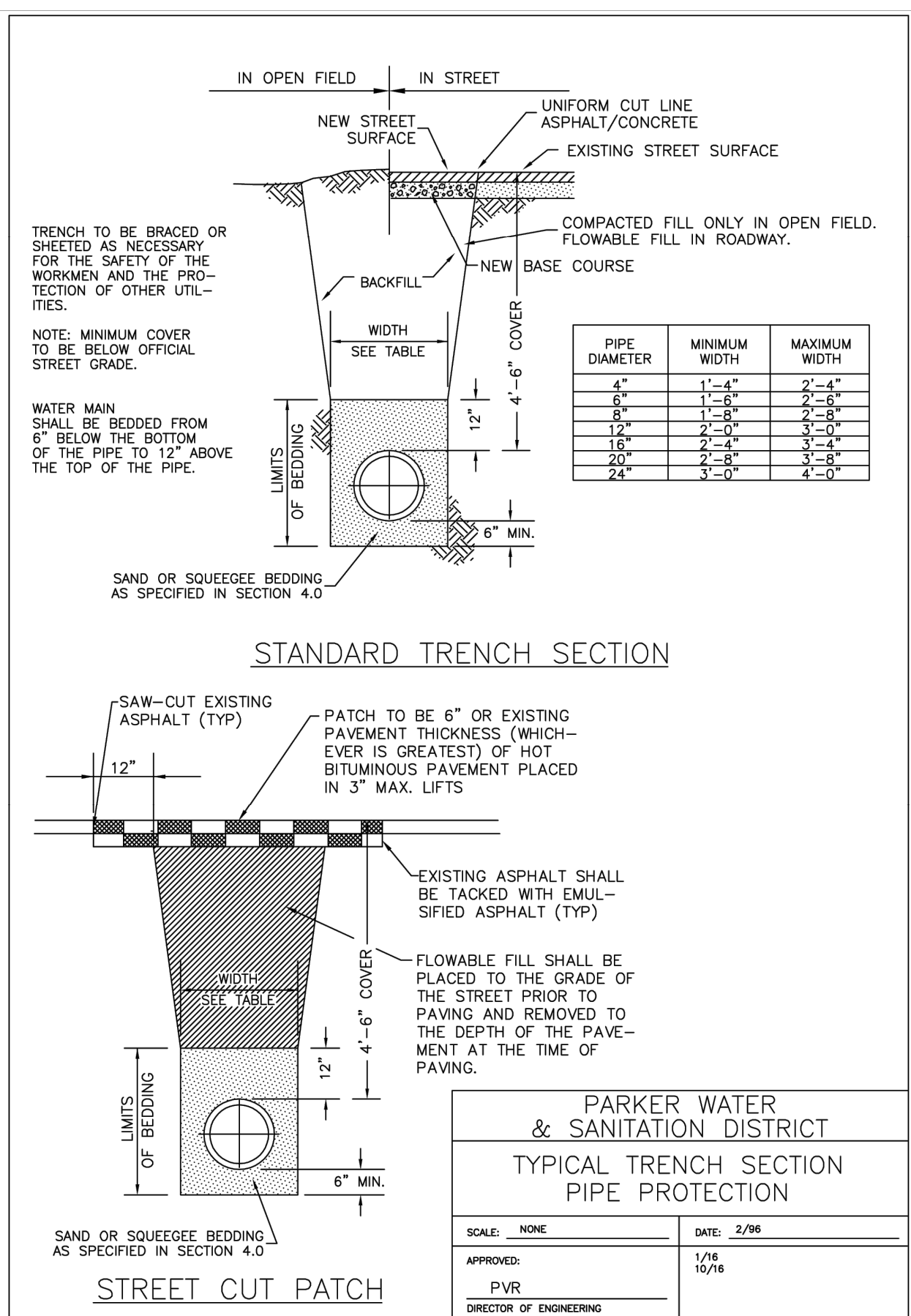
STREET WIDTH	ASPHALTIC BASE COURSE (1/2")	ASPHALTIC WEARING SURFACE (1/2")	TOTAL THICKNESS (1")
UP TO 36'	4"	2"	6"
36' TO 44'	4"	3"	7"
44' TO 48'	5"	3"	8"
WIDER THAN 48'	6"	3"	9"

**PARKER WATER & SANITATION DISTRICT  
SEWER TRENCHING AND BEDDING DETAIL**

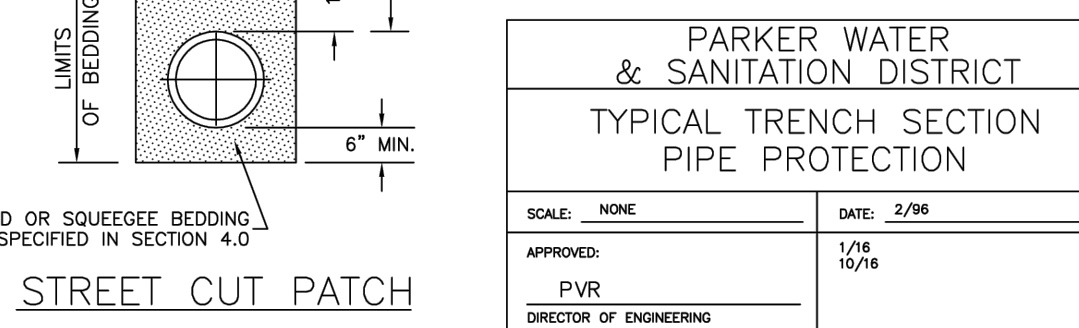
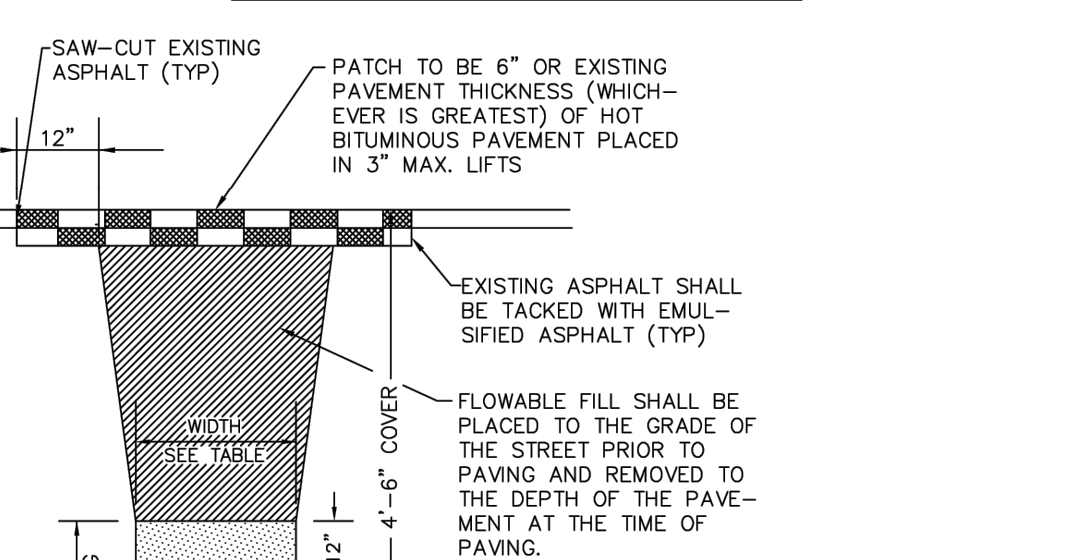
SCALE: NONE	DATE: 2/96
APPROVED: PVR	5/98 1/16 10/16
DIRECTOR OF ENGINEERING	

2016 REVISION

SHEET W4.1

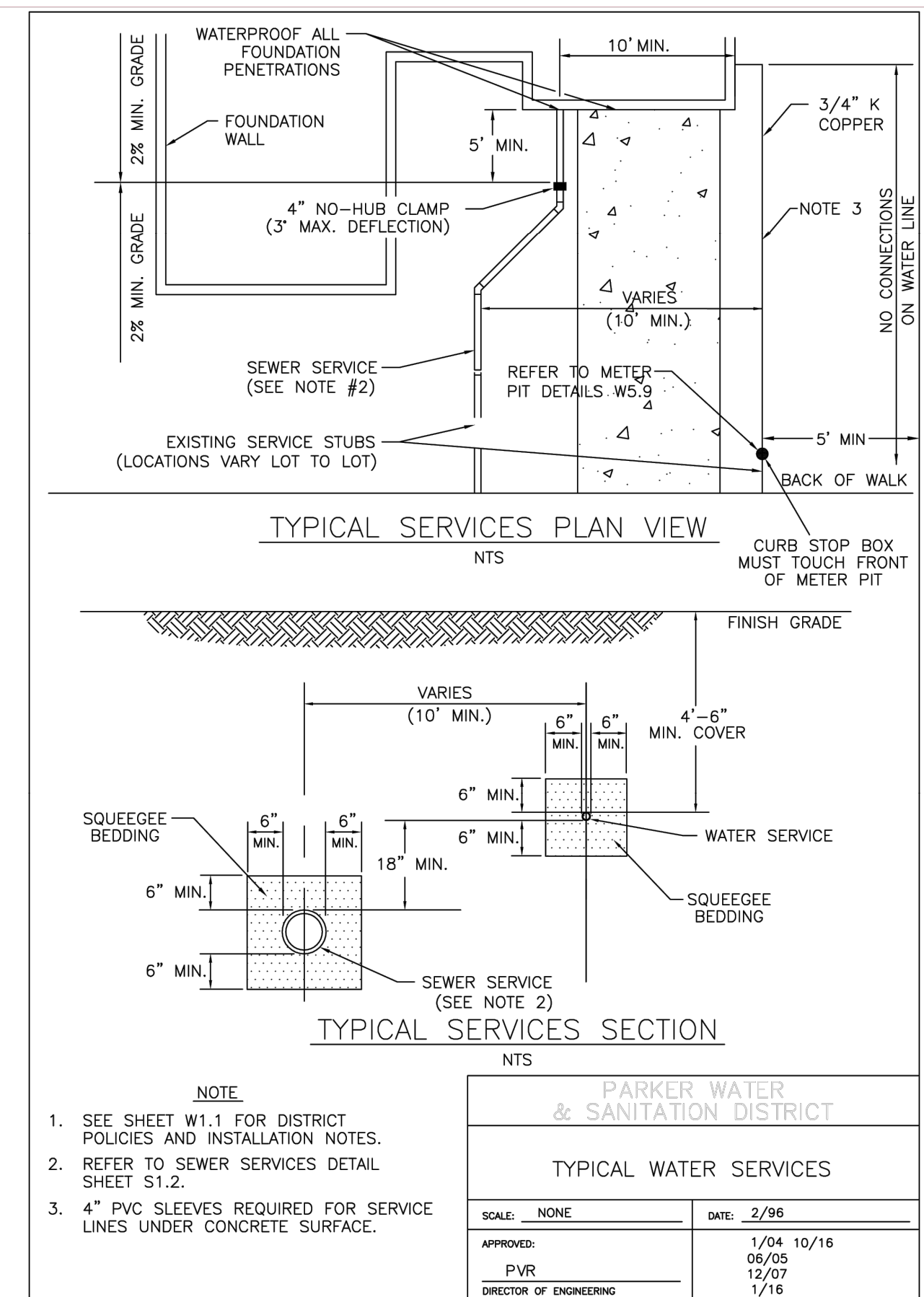


**STANDARD TRENCH SECTION**

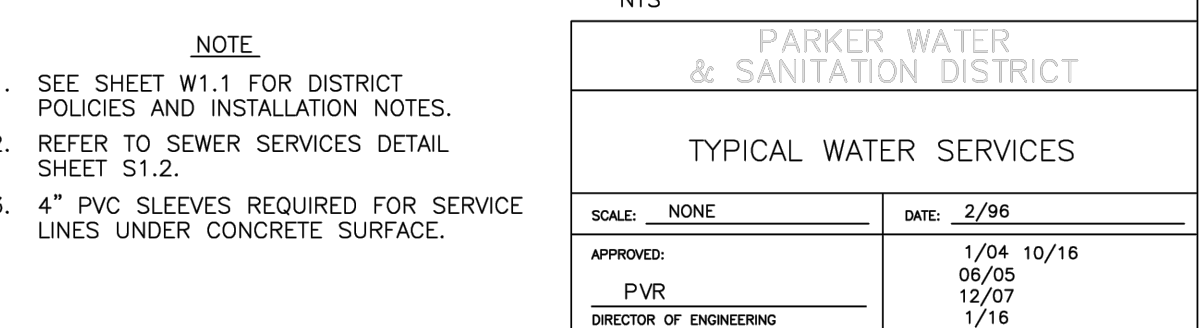
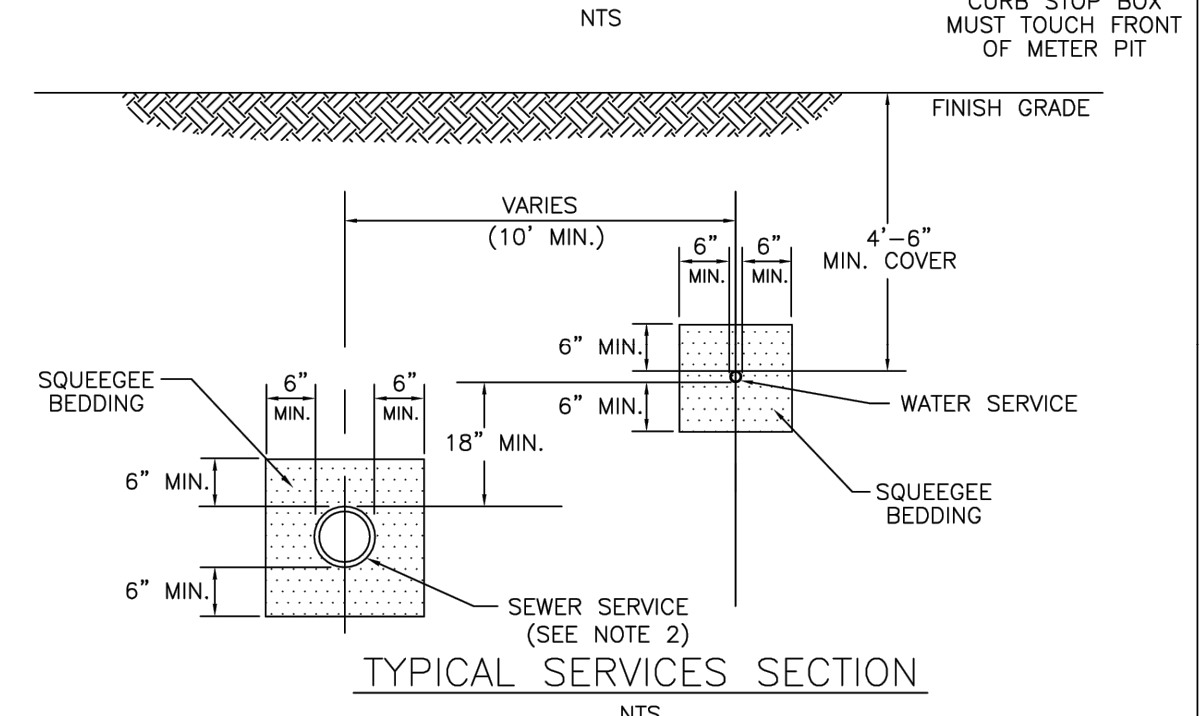


2016 REVISION

SHEET W4.1

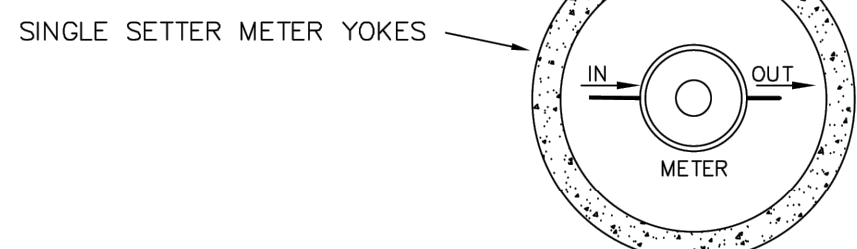
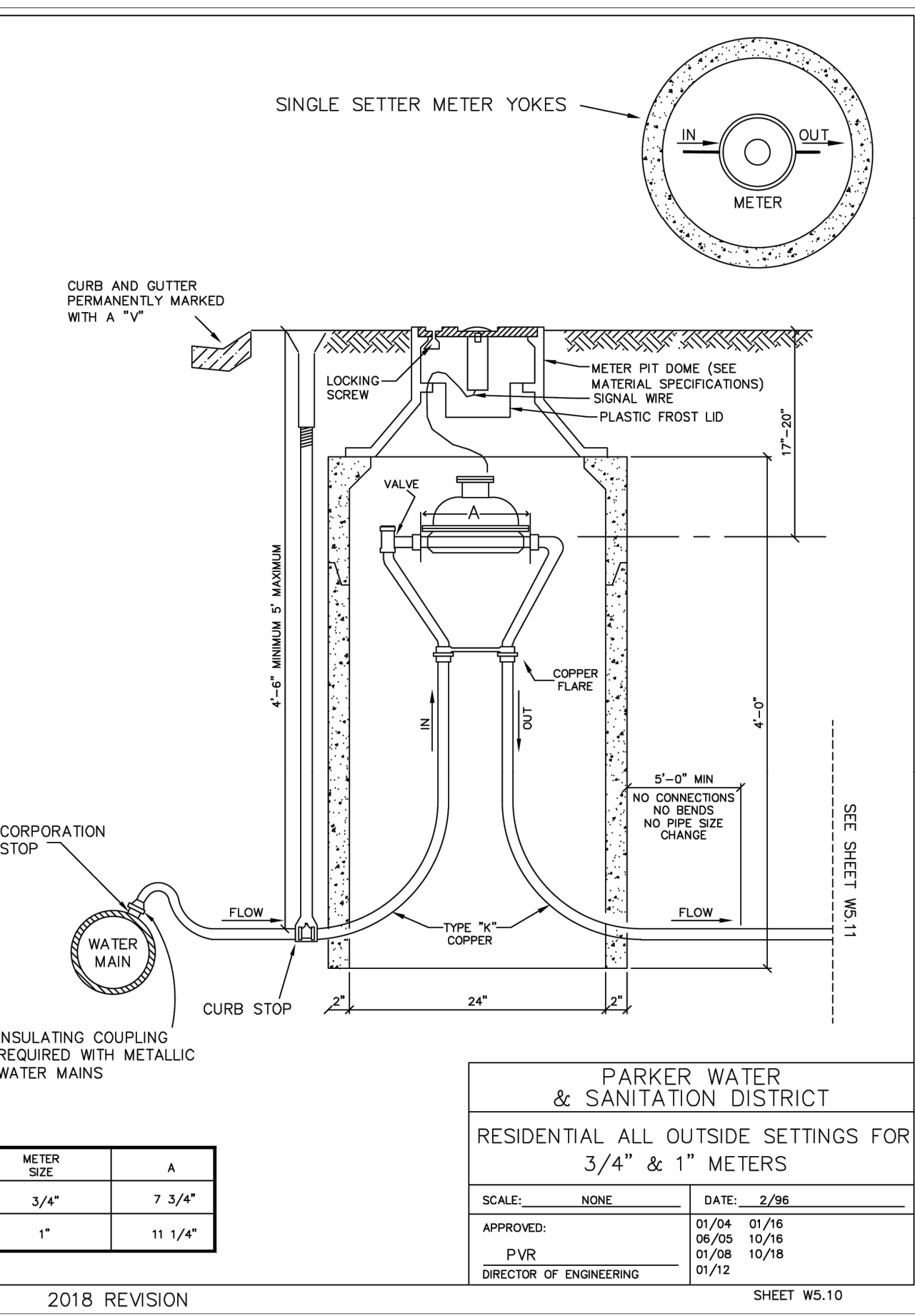


**TYPICAL SERVICES PLAN VIEW**



2016 REVISION

SHEET W1.2

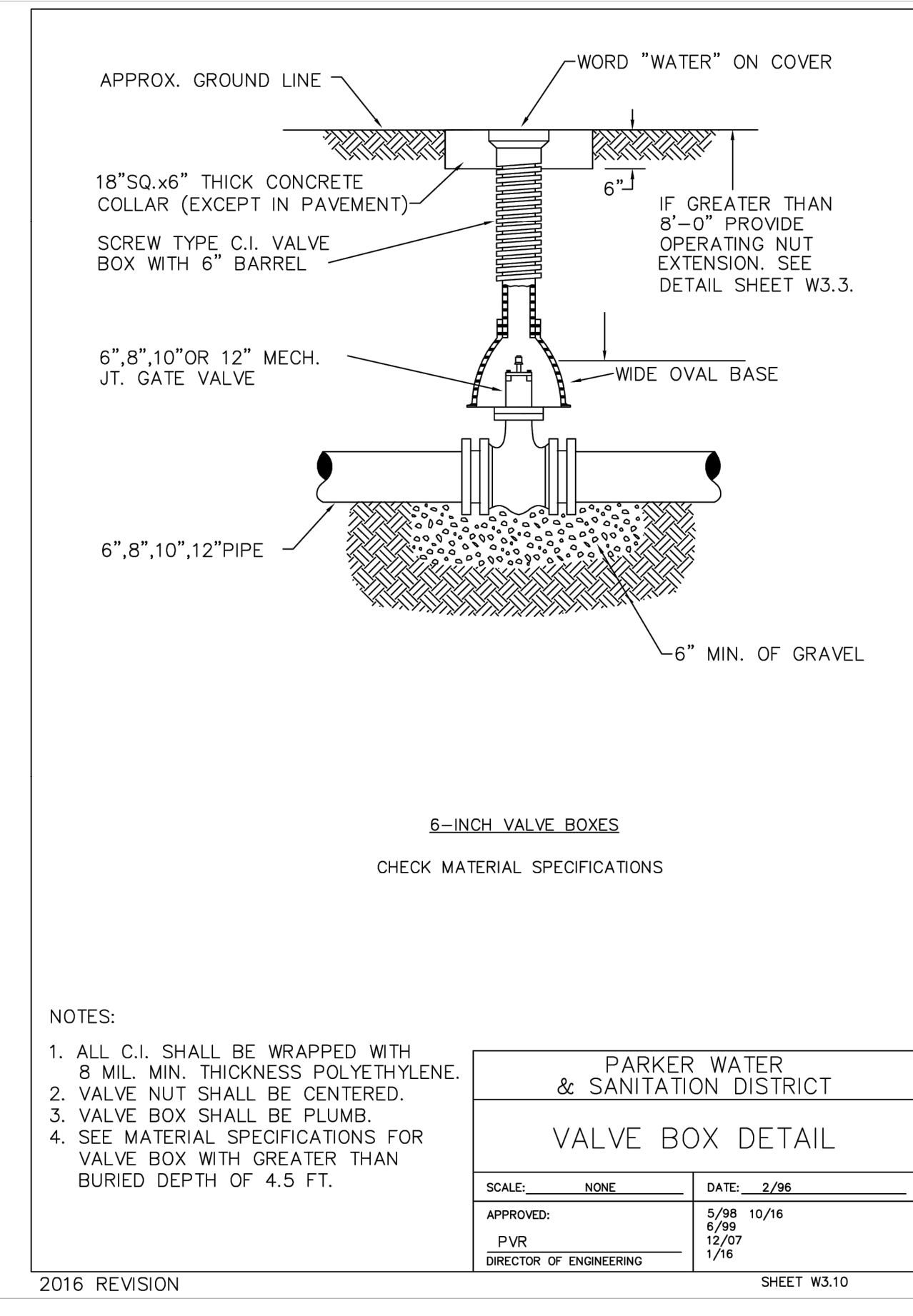


**PARKER WATER & SANITATION DISTRICT  
RESIDENTIAL ALL OUTSIDE SETTINGS FOR 3/4" & 1" METERS**

SCALE: NONE	DATE: 2/96
APPROVED: PVR	01/04 01/16 06/05 10/16 01/08 10/16 01/12
DIRECTOR OF ENGINEERING	

2018 REVISION

SHEET W5.10

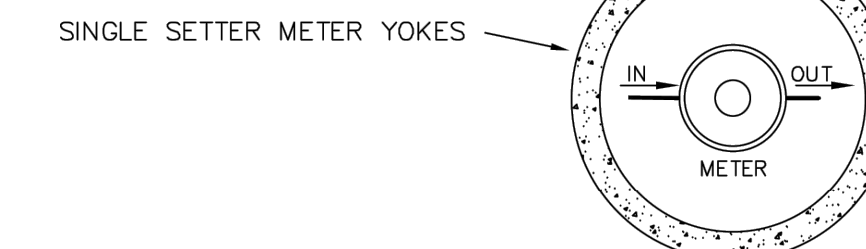
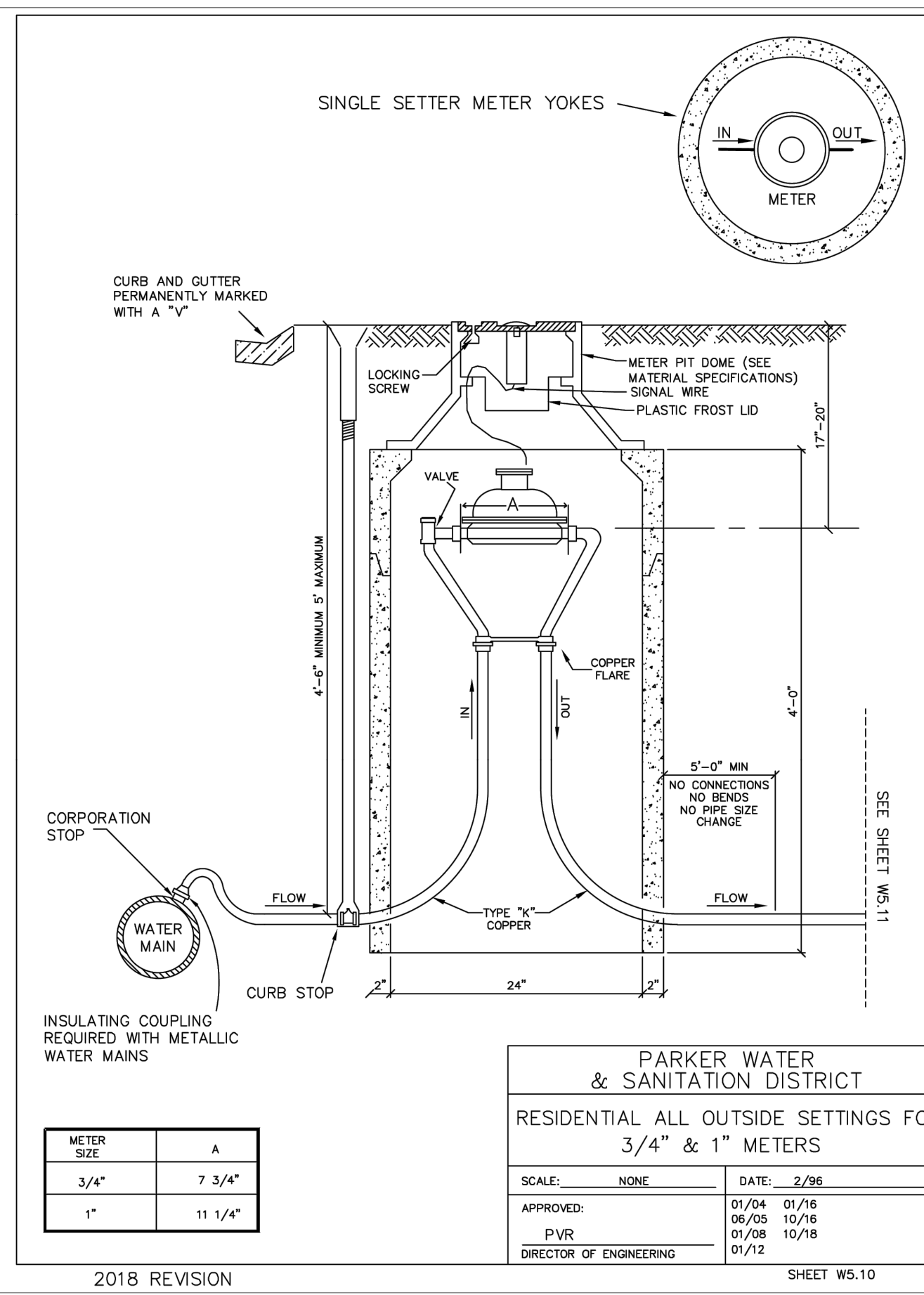


**PARKER WATER & SANITATION DISTRICT  
VALVE BOX DETAIL**

SCALE: NONE	DATE: 2/96
APPROVED: PVR	5/98 10/16 4/99 12/07 1/16
DIRECTOR OF ENGINEERING	

2016 REVISION

SHEET W3.10

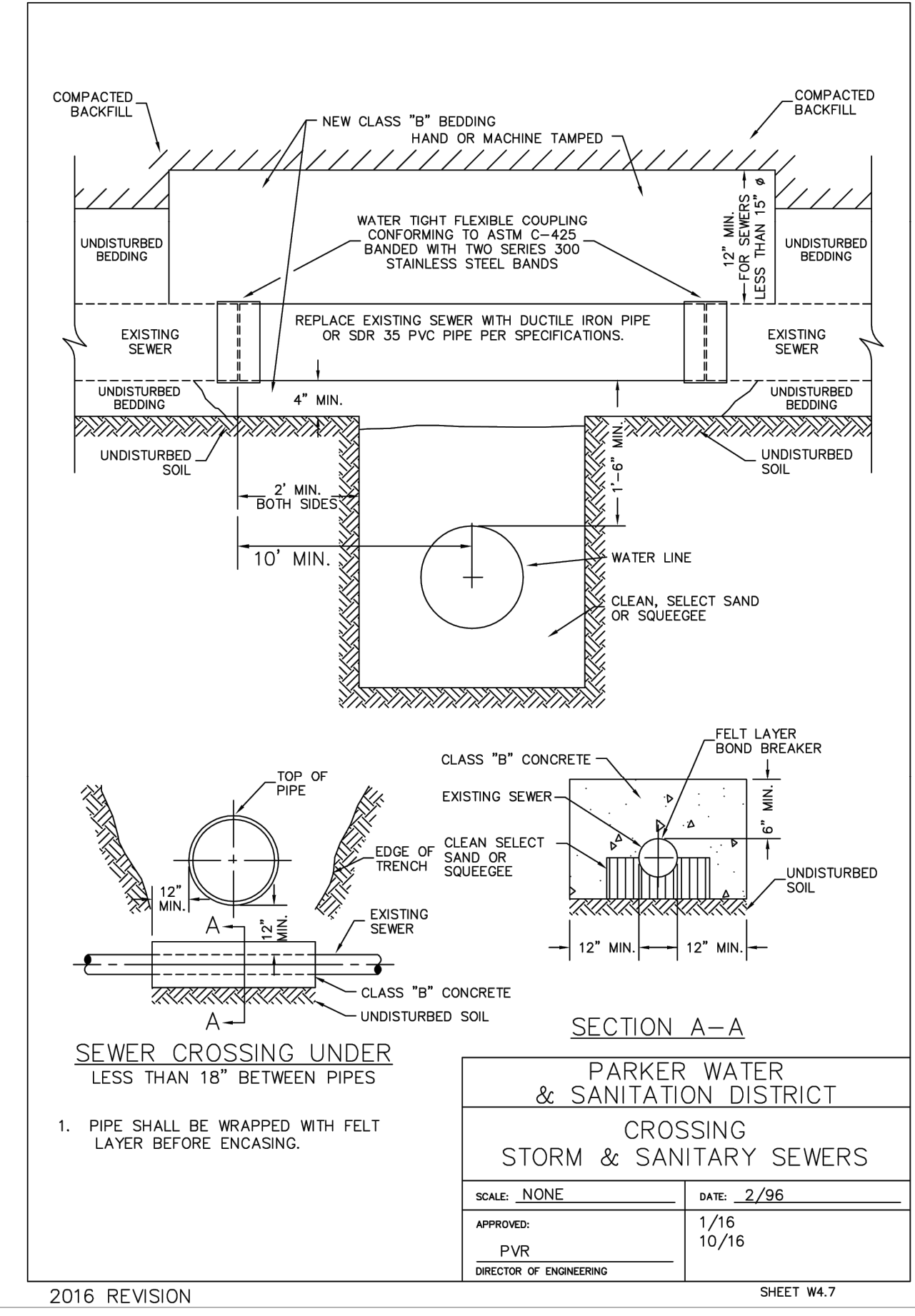


**PARKER WATER & SANITATION DISTRICT  
RESIDENTIAL ALL OUTSIDE SETTINGS FOR 3/4" & 1" METERS**

SCALE: NONE	DATE: 2/96
APPROVED: PVR	01/04 01/16 06/05 10/16 01/08 10/16 01/12
DIRECTOR OF ENGINEERING	

2018 REVISION

SHEET W5.10



**PARKER WATER & SANITATION DISTRICT  
CROSSING STORM & SANITARY SEWERS**

SCALE: NONE	DATE: 2/96
APPROVED: PVR	1/16 10/16
DIRECTOR OF ENGINEERING	

2016 REVISION

SHEET W4.7

**Kimley»Horn**  
 2025 KIMLEY-HORN AND ASSOCIATES, INC.  
 6200 South Syracuse Way, Suite 300  
 Greenwood, Colorado 80111 (303) 228-2300

NO.	REVISION	DATE

DESIGNED BY: MMR  
 DRAWN BY: KNP  
 CHECKED BY: KEW  
 DATE: 12/2/25

LINCOLN PROFESSIONAL PARK FILING NO. 1  
 LOT 2, PARKER, CO  
 7 BREW - CONSTRUCTION DOCUMENTS  
 DETAILS

PRELIMINARY  
 FOR REVIEW ONLY  
 NOT FOR CONSTRUCTION  
**Kimley»Horn**  
 PROJECT NO. 296237001  
 SHEET 296237001\_SSWR  
**C5.0**

