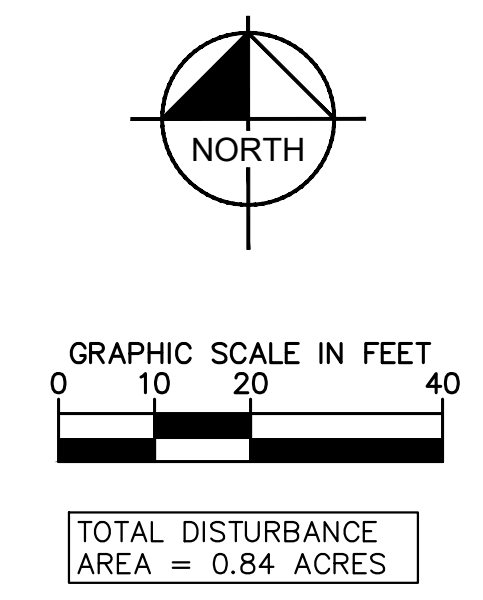
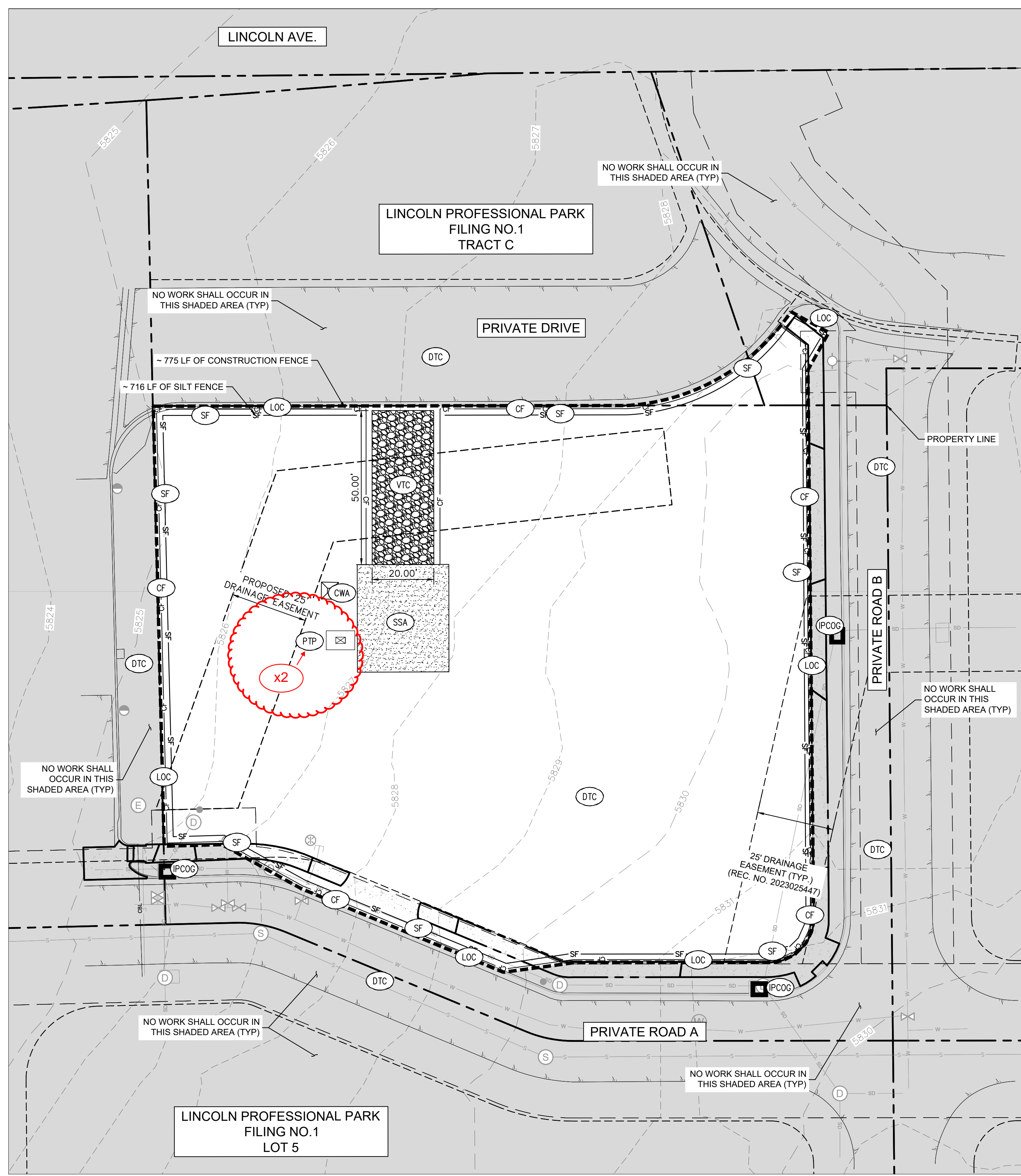


THIS DOCUMENT, TOGETHER WITH THE CONCEPTS AND DESIGNS PRESENTED HEREIN, AS AN INSTRUMENT OF SERVICE, IS INTENDED ONLY FOR THE SPECIFIC PURPOSE AND CLIENT FOR WHICH IT WAS PREPARED. REUSE OF AND IMPROPER RELIANCE ON THIS DOCUMENT WITHOUT WRITTEN AUTHORIZATION AND ADAPTATION BY KIMLEY-HORN AND ASSOCIATES, INC. SHALL BE WITHOUT LIABILITY TO KIMLEY-HORN AND ASSOCIATES, INC.



LEGEND

PROPERTY LINE	---
CONSTRUCTION FENCE	CF
CONCRETE WASHOUT	CWA
DEBRIS TRASH CONTROL	DTC
INLET PROTECTION FOR AREA INLETS NOT IN PAVEMENT	IPAN
INLET PROTECTION, CURB ON-GRADE, TYPE R INLET	IPCOG
INLET PROTECTION, CURB ON-SUMP, TYPE R INLET	IPCOS
LIMIT OF CONSTRUCTION	LOC
PORTABLE TOILET PROTECTION	PTP
MASONRY WORK PROTECTION	MWP
SEDIMENT CONTROL LOG	SCL
SILT FENCE	SF
SEEDING, MULCHING, & CRIMPING	SMC
SOIL STOCKPILE	SP
SURFACE ROUGHENING	SR
STABILIZED STAGING AREA	SSA
SIDEWALK TRANSITION PROTECTION	STP
VEHICLE TRACKING CONTROL	VTC
PROPOSED DIRECTION OF FLOW	→
EXISTING DIRECTION OF FLOW	↔

NOTES:

1. THE INTENT OF THIS PLAN IS TO IDENTIFY THE EROSION CONTROL PRACTICES REQUIRED. THE CONTRACTOR SHALL REFERENCE ADDITIONAL CONSTRUCTION PLANS FOR DEMOLITION OF EXISTING AND CONSTRUCTION OF PROPOSED IMPROVEMENTS.
2. ADJACENT STREETS AND SIDEWALK SHALL BE KEPT CLEAN AND FREE OF SEDIMENT AND/OR DEBRIS AT ALL TIMES. CONTRACTOR SHALL PERFORM STREET SWEEPING AS NEEDED DURING ACTIVE TRACKING.
3. TEMPORARY STABILIZATION (TS) SHALL BE IMPLEMENTED WITHIN THE DISTURBED PORTIONS OF THE PROJECT SITE NO LATER THAN 14 DAYS FOLLOWING THE CEASE OF CONSTRUCTION ACTIVITIES WITHIN THE DISTURBED AREAS.
4. PERMANENT STABILIZATION (PS) MAY BE USED WITHIN AREAS OF TEMPORARY STABILIZATION (TS) AT THE CONTRACTOR'S DISCRETION. STABILIZATION SHALL BE APPLIED IN ACCORDANCE WITH APPLICABLE TEMPORARY STABILIZATION SEQUENCING REQUIREMENTS.
5. CONTRACTOR SHALL UTILIZE ROLLED EROSION CONTROL PRODUCTS ON ALL SLOPES 4H:1V OR GREATER TO ACHIEVE REQUIRED STABILIZATION.
6. CONTRACTOR SHALL MAINTAIN ACCEPTABLE EROSION CONTROL PRACTICES WITHIN THE ANTICIPATED LIMITS OF CONSTRUCTION IDENTIFIED HEREIN. BEST MANAGEMENT PRACTICES AND STABILIZATION SHALL BE COMPLETED AS IDENTIFIED HEREIN IN ACCORDANCE WITH TOWN OF PARKER REQUIREMENTS.
7. CONTRACTOR TO UPDATE EROSION CONTROL LIVING DOCUMENT AS ADJUSTMENTS ARE MADE ON SITE.
8. THIS STORMWATER MANAGEMENT PLAN SHOWS THE REQUIRED SITE EROSION CONTROL BEST MANAGEMENT PRACTICES BASED UPON REVIEW OF EXISTING SITE TOPOGRAPHY AND PROPOSED SITE CONDITIONS. THE OPERATOR MAY MODIFY INLET PROTECTION MEASURES SHOULD ACTUAL SITE CONDITIONS VARY. THE STORMWATER MANAGEMENT PLAN AND NARRATIVE SHALL BE AMENDED TO REFLECT SAID CHANGES.
9. NO WORK SHALL OCCUR OUTSIDE THE DESIGNATED LIMITS OF CONSTRUCTION.
10. LOT PROTECTION (LP) IS REQUIRED ON COMMERCIAL LOTS WHEN LANDSCAPING IS NOT POSSIBLE.
11. ALL PERIMETER PROTECTION TO REMAIN IN PLACE UNTIL THE SITE IS FULLY STABILIZED.
12. THE VTC PAD FOR A CWA DOES NOT NEED TO CONFORM TO THE FORMAL VTC DETAIL.
13. THE TRUE LOCATION OF THE CWA MAY BE DETERMINED BY THE TOWN AND THE ECS.
14. LOT PROTECTION (LP) IS REQUIRED ON COMMERCIAL LOTS WHEN COMPLETION OF LANDSCAPING IS NOT POSSIBLE AND PRIOR TO ISSUANCE OF A TEMPORARY CERTIFICATE OF OCCUPANCY.
15. THE TRUE LOCATION OF THE PORTABLE TOILET PROTECTION (PTP) MAY BE DETERMINED BY THE TOWN AND THE ECS.
16. MASONRY WORK PROTECTION IS REQUIRED FOR CONSTRUCTION OF BUILDINGS.
17. ANY ONSITE BULK FUEL STORAGE REQUIRES A FIRE LIFE SAFETY PERMIT FROM THE TOWN OF PARKER PRIOR TO INSTALLATION.

NO.	REVISION	BY	DATE	APPR

Kimley»Horn
 © 2025 KIMLEY-HORN AND ASSOCIATES, INC.
 6200 South Syracuse Way, Suite 300
 Greenwood, Colorado 80111 (303) 228-2300

DESIGNED BY: MMR
 DRAWN BY: KNP
 CHECKED BY: KEW
 DATE: 12/2/25

LINCOLN PROFESSIONAL PARK FILING NO. 1
 LOT 2, PARKER, CO
 7 BREW - CONSTRUCTION DOCUMENTS
 CBMP INITIAL

PRELIMINARY
 FOR REVIEW ONLY
 NOT FOR CONSTRUCTION
Kimley»Horn
 Kimley-Horn and Associates, Inc.

PROJECT NO.
296237001
 SHEET
296237001_CBMP
C2.1



THIS DOCUMENT, TOGETHER WITH THE CONCEPTS AND DESIGNS PRESENTED HEREIN, AS AN INSTRUMENT OF SERVICE, IS INTENDED ONLY FOR THE SPECIFIC PURPOSE AND CLIENT FOR WHICH IT WAS PREPARED. REUSE OF AND IMPROPER RELIANCE ON THIS DOCUMENT WITHOUT WRITTEN AUTHORIZATION AND ADAPTATION BY KIMLEY-HORN AND ASSOCIATES, INC. SHALL BE WITHOUT LIABILITY TO KIMLEY-HORN AND ASSOCIATES, INC.

PHASED BMP IMPLEMENTATION – INITIAL PHASE

THE INITIAL PHASE SHALL CONSIST OF THE TEMPORARY CONSTRUCTION BMPs TO MINIMIZE THE POTENTIAL FOR EROSION AND SEDIMENT TRANSFER WHILE MOBILIZING AND PREPARING THE SITE FOR CONSTRUCTION ACTIVITIES. THE SITE SUPERVISOR SHALL COMPLETE THE ANTICIPATED INITIAL PHASE SEQUENCING AS FOLLOWS:

- 1. CONTRACTOR TO OBTAIN TOWN EROSION CONTROL PERMIT AND STATE CONSTRUCTION ACTIVITIES DISCHARGE PERMIT IN ADVANCE OF START OF CONSTRUCTION.
2. INSTALL CONSTRUCTION FENCE AROUND LIMITS OF CONSTRUCTION (loc) AT PROPERTY LINE OR LIMITS OF DISTURBANCE.
3. INSTALL STABILIZED VEHICLE TRACKING CONTROL PAD., THIS WILL BE THE FIRST CONSTRUCTION WORK ON THE PROJECT.
4. PREPARE STABILIZED STAGING AREA AND CONCRETE WASHOUT.
5. INSTALL PERIMETER SILT FENCE, AT DOWN GRADIENT LOCATIONS.
6. CONSTRUCT AND STABILIZE TEMPORARY SEDIMENT BASIN WITH APPROPRIATE OUTFALL STRUCTURES AFTER RECEIPT OF GRADING PERMIT (CLEAR ONLY THOSE AREAS NECESSARY TO INSTALL THE BASIN). TEMPORARY SEDIMENT BASINS SHALL REMAIN IN PLACE UNTIL ALL STORM SEWER AND PAVEMENT BASE COURSE HAVE BEEN INSTALLED OR INSTRUCTED IN THE SEQUENCE OF NOTES, DUE TO FIELD CONDITIONS OR INSPECTOR INPUT.
7. INSTALL DIVERSION DITCHES
8. CALL TOWN OF PARKER FOR EROSION CONTROL INSPECTION.

PHASED BMP IMPLEMENTATION – INTERIM PHASE

THE INTERIM PHASE SHALL CONSIST OF THE TEMPORARY CONSTRUCTION BMPs TO MINIMIZE THE POTENTIAL FOR EROSION AND SEDIMENT TRANSFER DURING THE CONSTRUCTION UTILITIES AND SITE GRADING ASSOCIATED WITH THE PROPOSED RESIDENTIAL BUILDING. THE SITE SUPERVISOR SHALL COMPLETE THE ANTICIPATED INTERIM PHASE SEQUENCING AS FOLLOWS:

- 1. CONFIRM EXISTING BMPs WHICH ARE TO BE MAINTAINED THROUGHOUT CONSTRUCTION ARE IN WORKING ORDER AND COMPLIANT WITH APPLICABLE REGULATIONS.
2. REPAIR AND/OR REPLACE ANY EXISTING BMPs WHICH ARE DEEMED INADEQUATE.
3. STOCKPILE MATERIALS IN ACCORDANCE WITH THE STOCKPILE MANAGEMENT (SP) CBMP.

NOTE: SOIL STOCKPILES ARE DISTURBED PORTIONS OF THE SITE WHERE CONSTRUCTION ACTIVITY TEMPORARILY CEASES OR IS ANTICIPATED TO BE CEASED FOR A PERIOD GREATER THAN 14 DAYS SHALL BE TEMPORARILY STABILIZED WITH TEMPORARY SEEDING OR OTHER STABILIZATION METHODS WITHIN 7 DAYS OF TEMPORARILY CEASING CONSTRUCTION.

NOTE: STOCKPILE AREAS SHOWN ON THE PLAN FOR REFERENCE ONLY, DUE TO THE CONSTRUCTION PHASES, REUSE OF DEMOLITION MATERIALS AND IMPORT REQUIRED, IT IS ANTICIPATED THAT ONSITE STOCKPILES WILL BE REQUIRED. CONTRACTOR SHALL IMPLEMENT STOCKPILE MANAGEMENT (SP) BMPs AT LOCATIONS REQUIRED BY CONSTRUCTION PHASING AND SEQUENCING AND NOTE SUCH ON THE STORMWATER MANAGEMENT SITE MAP.

- 4. INSTALL STORM, SANITARY, AND WATER FACILITIES.
5. INSTALL INLET PROTECTION AT ALL STORM SEWER STRUCTURES AS EACH INLET STRUCTURE IS INSTALLED. CONDUCT PERIODIC INSPECTIONS AT NOTED INTERVALS AS REQUIRED BY THE TOWN AND THE STATE OF COLORADO.

PHASED BMP IMPLEMENTATION – FINAL PHASE

THE FINAL PHASE SHALL CONSIST OF THE TEMPORARY CONSTRUCTION BMPs TO MINIMIZE POTENTIAL FOR EROSION AND SEDIMENT TRANSFER DURING THE CONSTRUCTION OF THE PROPOSED LIMITED SITE IMPROVEMENTS. THE SITE SUPERVISOR SHALL COMPLETE THE ANTICIPATED FINAL PHASE SEQUENCING AS FOLLOWS:

- 1. INSTALL DRY UTILITIES AND SET TRANSFORMERS AND METER BANKS IN COORDINATION WITH XCEL ENERGY AND IREA.
2. PERMANENTLY STABILIZE AREAS TO BE VEGETATED AS THEY ARE BROUGHT TO FINAL GRADE.
3. UPON COMPLETION OF STORM DRAINAGE SYSTEM, CONTRACTOR SHALL TAKE THE SEDIMENT BASIN OFF-LINE AND ESTABLISH DETAILED CONSTRUCTION OF DRAINAGE FACILITIES.
4. COMPLETE GRADING AND INSTALLATION OF POND.
5. PREPARE SITE FOR CURB, GUTTER, AND PAVING INSTALLATION.
6. PAVE SITE AND INSTALL HARDSCAPE.
7. REFER TO LANDSCAPING PLAN FOR PLANTING INFORMATION AND INSTALL FINAL STABILIZATION MEASURES.
8. CONTACT THE TOWN OF PARKER FOR FINAL INSPECTION.
9. REMOVE BMPs.
10. REFER TO LANDSCAPING PLAN FOR PLANTING INFORMATION AND INSTALL FINAL STABILIZATION MEASURES.

Legend for CBMP showing symbols and descriptions for items like CD CHECK DAM, CF CONSTRUCTION FENCE, CP CULVERT PROTECTION, CWA CONCRETE WASHOUT AREA, D DEWATERING, DD DIVERSION DITCH, DP DETENTION POND PROTECTION, DTC DEBRIS TRASH CONTROL, ECB EROSION CONTROL BLANKET, IPAN INLET PROTECTION FOR AREA INLETS NOT IN PAVEMENT, IPAP INLET PROTECTION FOR AREA INLETS IN PAVEMENT, IPCOG INLET PROTECTION, CURB ON-GRADE, TYPE R INLET, and IPCOS INLET PROTECTION, CURB ON SUMP, TYPE R INLET.

CBMP CONSTRUCTION BEST MANAGEMENT PRACTICES LEGEND 1 OF 3 Oct. 2013

GEN NOTES 1 OF 4 Oct. 2013 containing 10 numbered items regarding grading, erosion control, and site stabilization requirements.

CBMP CONSTRUCTION BEST MANAGEMENT PRACTICES LEGEND 1 OF 4 Oct. 2013

Legend for CBMP showing symbols and descriptions for items like LP LOT PROTECTION, MWP MASONRY WORK PROTECTION, PTP PORTABLE TOILET PROTECTION, RCSC ROUGH OUT STREET CONTROL, RS ROCK SOCK, RSS ROCK SOCK IN SWALE, SB STRAW BALE, SCL SEDIMENT CONTROL LOGS, SF SILT FENCE, SMC SEEDING, MULCHING AND CRIMPING, SR SURFACE ROUGHING, SSA STABILIZED STAGING AREA, and STP SIDEWALK TRANSITION PROTECTION.

CBMP CONSTRUCTION BEST MANAGEMENT PRACTICES LEGEND 2 OF 3 Oct. 2013

GEN NOTES 2 OF 4 Oct. 2013 containing 11 numbered items regarding erosion control, maintenance, and site safety.

CBMP CONSTRUCTION BEST MANAGEMENT PRACTICES LEGEND 2 OF 4 Oct. 2013

Legend for CBMP showing symbols and descriptions for items like TI TEMPORARY IRRIGATION, TSB TEMPORARY SEDIMENT BASIN, and VTC VEHICLE TRACKING CONTROL.

CBMP CONSTRUCTION BEST MANAGEMENT PRACTICES LEGEND 3 OF 3 Oct. 2013

GEN NOTES 3 OF 4 Oct. 2013 containing 25 numbered items regarding hazardous materials, decontamination, and weed control.

CBMP CONSTRUCTION BEST MANAGEMENT PRACTICES LEGEND 3 OF 4 Oct. 2013

Table with columns for NO., REVISION, and DATE. Includes a row for APPR.

Kimley-Horn logo and contact information: 2025 KIMLEY-HORN AND ASSOCIATES, INC. 6200 South Syracuse Way, Suite 300 Greenwood, Colorado 80111 (303) 228-2300

DESIGNED BY: MMR DRAWN BY: KNP CHECKED BY: KEW DATE: 12/2/25

LINCOLN PROFESSIONAL PARK FILING NO. 1 LOT 2, PARKER, CO 7 BREW - CONSTRUCTION DOCUMENTS CBMP DETAILS

PRELIMINARY FOR REVIEW ONLY NOT FOR CONSTRUCTION Kimley-Horn and Associates, Inc.

PROJECT NO. 296237001 SHEET 296237001_CBMP C2.3