

No Work Shall Occur in This Area

No Work Shall Occur in This Area

Please show jersey barriers or construction fence along the sides of the VTC to ensure use of the entire 50-foot pad. Move CWA down to the SSA.

No Work Shall Occur in This Area

Add General Notes:
 MASONRY WORK PROTECTION IS REQUIRED FOR CONSTRUCTION OF BUILDINGS
 ANY ONSITE BULK FUEL STORAGE REQUIRES A FIRE LIFE SAFETY PERMIT FROM THE TOWN OF PARKER PRIOR TO INSTALLATION
 ALL NATIVE SEEDED SLOPED AREAS 4V:1H AND STEEPER MUST BE COVERED WITH STRAW EROSION CONTROL BLANKET, SB150BN or EQUIVALENT

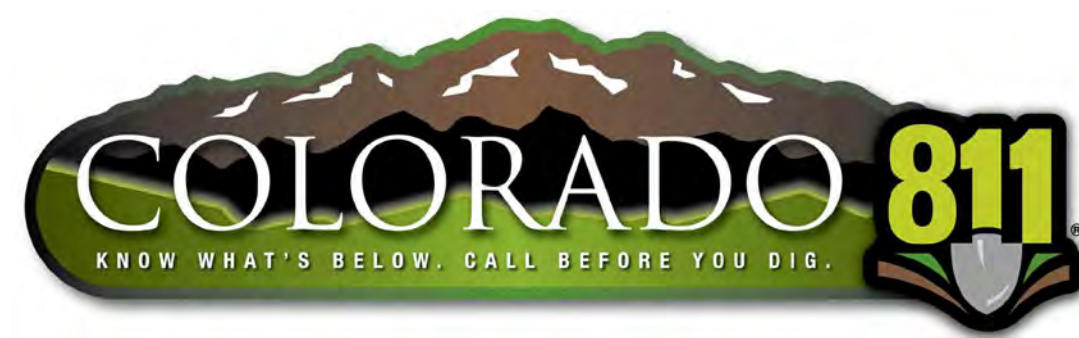
TOWN OF PARKER NOTES

- ALL SILT FENCES MUST BE INSTALLED ON 5-FOOT CENTERS.
- THE TRUE LOCATION OF THE CWA MAY BE DETERMINED BY THE TOWN AND ECS.
- THE TRUE LOCATION OF THE PTP MAY BE DETERMINED BY THE TOWN AND ECS.
- PLACE SCL IMMEDIATELY BEHIND CURB AND SIDEWALK DOWN GRADIENT OF DISTURBED AREAS. USE 12" LOGS.
- IF SF IS NOT INSTALLED ON THE BACK OF CURB, ECB MAY BE NECESSARY IN THE GAP.
- ALL SOILED STREETS, CURBS, GUTTERS, SIDEWALKS, DRIVE AISLES, ETC., MUST BE THOROUGHLY CLEANED BY 5 PM EACH WORK DAY AND DURING THE DAY WHEN LEVEL OF SOIL EXCEEDS A LOW LEVEL AS DETERMINED BY THE TOWNS INSPECTOR.
- LOT PROTECTION IS REQUIRED ON ALL COMMERCIAL LOTS WHEN LANDSCAPING IS NOT POSSIBLE.
- TO REDUCE THE POTENTIAL FOR CLOGGING OF DEBRIS GRATES, NO STRAW MULCH SHALL BE USED WITHIN THE EXCESS URBAN RUNOFF VOLUME OF A DETENTION BASIN. INSTEAD, EROSION CONTROL BLANKET SHALL BE INSTALLED FOR A WIDTH OF AT LEAST 6-FEET ON BOTH SIDES OF THE CONCRETE LOW FLOW CHANNELS OR UP TO A DEPTH OF 1-FOOT IN SOIL RIPRAP OR BENCHED LOW FLOW CHANNELS. ADDITIONALLY, HYDRAULICALLY-APPLIED WOOD FIBER MULCH, STABILIZED FIBER MATRIX, BONDED FIBER MATRIX, OR FLEXIBLE GROWTH MEDIUM SHALL BE USED IN ALL OTHER AREAS WITHIN THE EXCESS URBAN RUNOFF VOLUME OF THE DETENTION BASIN. THE BLANKET AND HYDRAULICALLY-APPLIED MULCH SHALL COMPLY WITH THE MATERIALS AND INSTALLATION REQUIREMENTS FOR EROSION CONTROL BLANKETS AS REQUIRED BY THE TOWNS CBMP PROGRAM, AND WHERE APPLICABLE, THE PRODUCT MANUFACTURER.

LEGEND

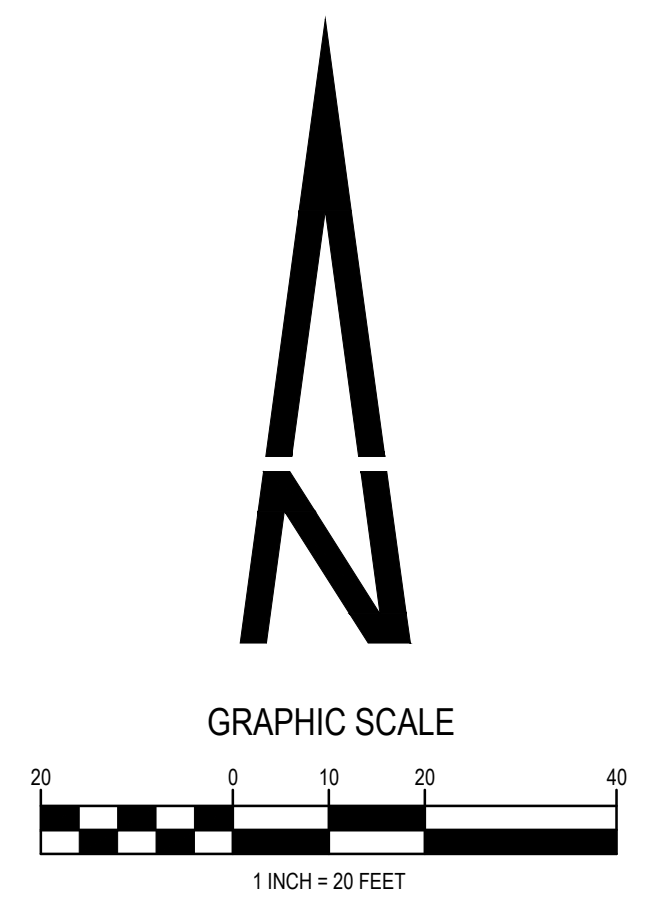
CD		PROPERTY LINE
CF		CHECK DAM
CP		CONSTRUCTION FENCE
CWA		CULVERT PROTECTION
DD		CONCRETE WASHOUT AREA
DP		Dewatering
DTC		DIVERSION DITCH
ECB		DEBRIS TRASH CONTROL
IPAN		EROSION CONTROL BLANKET
IPAP		INLET PROTECTION FOR AREA INLETS NOT IN PAVEMENT
IPCOG		Inlet Protection for Area Inlets in Pavement
IPCOS		INLET PROTECTION, CURB ON GRADE, TYPE R INLET
LP		INLET PROTECTION, CURB ON SUMP, TYPE R INLET
MWP		Lot Protection
PTP		MASONRY WORK PROTECTION
RCSC		PORTABLE TOILET PROTECTION
RS		Rough Cut Street Control
RSS		ROCK SOCK
SCL		Rock Sock in Swale
SF		SEDIMENT CONTROL LOGS
SMC		PROPOSED SILT FENCE
SR		SEED MULCH CRIMP
SSA		SURFACE ROUGHENING
STP		STABILIZED STORAGE AREA
TI		SIDEWALK TRANSITION PROTECTION
TSB		TEMPORARY IRRIGATION
TTM		TEMPORARY SEDIMENT BASIN
VTC		TUBULAR TRAFFIC MARKER
		VEHICLE TRACKING CONTROL
		DRAINAGE DIRECTION

Show Parker's Complete Legend of Keys/Symbols



THE TYPE, SIZE, LOCATION, AND NUMBER OF ALL KNOWN UNDERGROUND UTILITIES ARE APPROXIMATE WHEN SHOWN ON THE DRAWINGS. IT SHALL BE THE RESPONSIBILITY OF THE CONTRACTOR TO VERIFY THE EXISTENCE AND LOCATION OF ALL UNDERGROUND UTILITIES ON THE SITE, AND OFFSITE IN WORK AREAS. LOCATION OF EXISTING UTILITIES SHALL BE VERIFIED BY CONTRACTOR PRIOR TO DATE OF CONSTRUCTION. FOR INFORMATION CONTACT: UTILITY NOTIFICATION CENTER OF COLORADO (UNCC) - 1-800-922-1987. IT IS THE CONTRACTOR'S RESPONSIBILITY TO FIELD VERIFY SIZE AND HORIZONTAL AND VERTICAL LOCATIONS OF EXISTING FACILITIES PRIOR TO CONSTRUCTION AND NOTIFY THE ENGINEER OF ANY DISCREPANCIES.

THE CONTRACTOR SHALL BE RESPONSIBLE FOR ANY DAMAGE TO EXISTING IMPROVEMENTS AND UTILITIES AND SHALL REPAIR ANY DAMAGE AT HIS EXPENSE.



THE TOWN OF PARKER REVIEW CONSTITUTES GENERAL COMPLIANCE WITH THE TOWN'S STANDARDS AND APPROVED VARIANCES, SUBJECT TO THESE PLANS BEING STAMPED, SIGNED, AND DATED BY THE PROFESSIONAL ENGINEER OF RECORD. REVIEW BY THE TOWN DOES NOT CONSTITUTE APPROVAL OF THE PLAN DESIGN OR ACCURACY AND CORRECTNESS OF ENGINEERING CALCULATIONS. ERRORS IN THE DESIGN OR CALCULATIONS REMAIN THE RESPONSIBILITY OF THE REGISTERED PROFESSIONAL ENGINEER WHOSE STAMP AND SIGNATURE ARE AFFIXED TO THIS DOCUMENT.

THIS REVIEW DOES NOT CONSTITUTE APPROVAL OF ANY PRIVATE ON-SITE IMPROVEMENTS WHICH MAY BE SHOWN. CONSTRUCTION CANNOT COMMENCE UNTIL ALL REQUIRED DRAINAGE/TRAFFIC REPORT(S), FINAL DEVELOPMENT PLAN(S), SPECIAL REVIEW(S), GRADING PERMIT, AND/OR OTHER PERMITS ARE COMPLETE, APPROVED AND ON FILE WITH THE TOWN OF PARKER

TOWN OF PARKER, DIRECTOR OF ENGINEERING _____ DATE _____

DESIGN GROUP, INC.
 6601 SOUTH PIERCE STREET, SUITE 315, LITTLETON, CO 80120 303-232-9088
 WWW.PERCPTIONDESIGNGROUP.COM

NO.	DATE	DESCRIPTION	REVISIONS
1	09/17/25	1ST SUBMITTAL	

INITIAL CBMP PLAN

HUNTINGTON NATIONAL BANK

LOT 3A- PARKER POINT SUBDIVISION FILING NO. 1, AMENDMENT NO. 1
 LOCATED IN THE NORTHEAST 1/4 OF SECTION 3, TOWNSHIP 6 SOUTH,
 RANGE 66 WEST OF THE 6TH P.M., TOWN OF PARKER, COUNTY OF DOUGLAS, STATE OF COLORADO

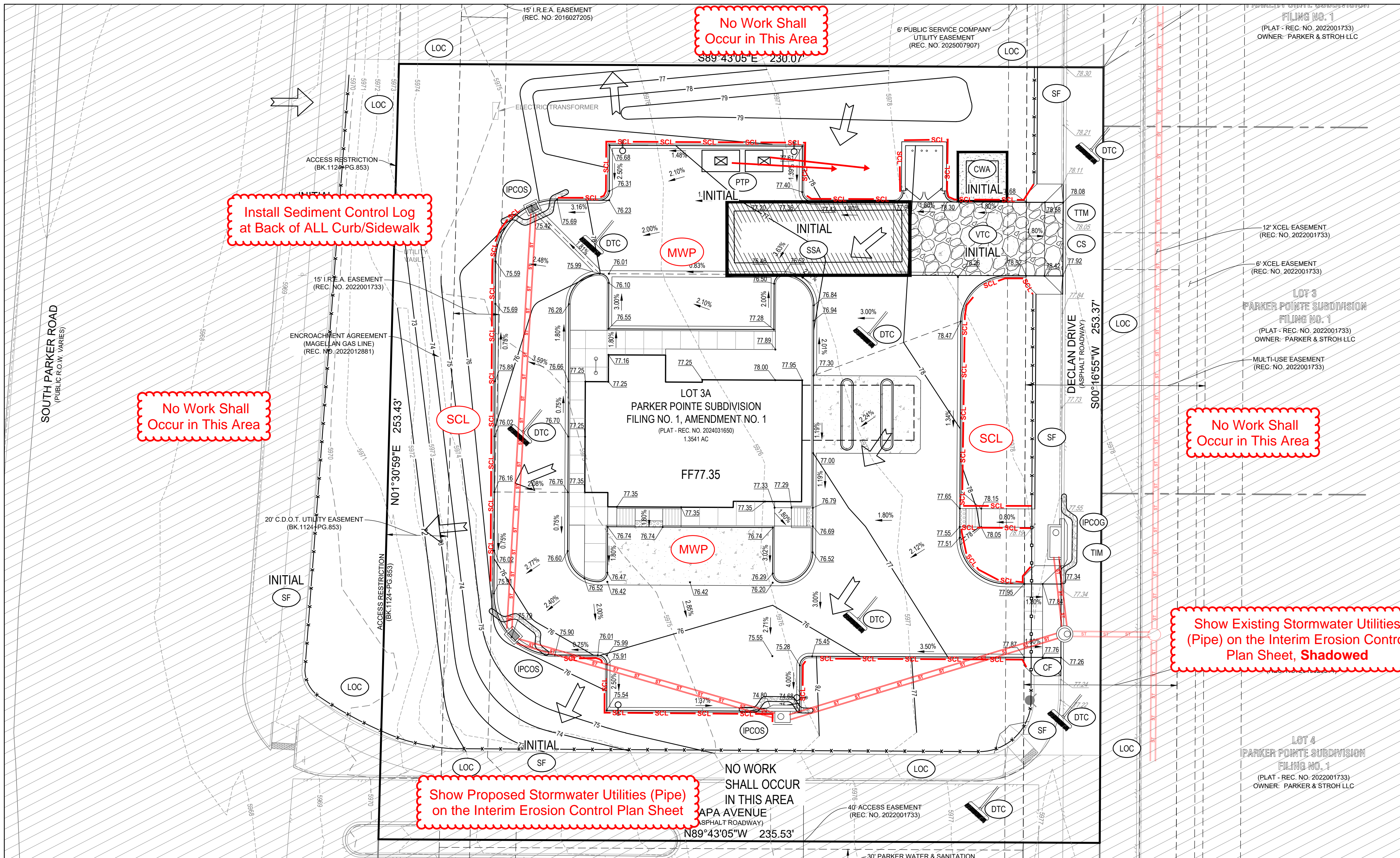
Design By: CLN

Approved By: JWD

Project No.: 2025-005

SHEET

C5.10



LEGEND	
CD	PROPERTY LINE
CF	CHECK DAM
CP	CONSTRUCTION FENCE
CP	CULVERT PROTECTION
CWA	CONCRETE WASHOUT AREA
DD	DIVERSION DITCH
DP	DETENTION POND PROTECTION
DTC	DEBRIS TRASH CONTROL
ECB	EROSION CONTROL BLANKET
IPAN	INLET PROTECTION, CURB ON GRADE, TYPE R INLET
IPCOG	INLET PROTECTION, CURB ON GRADE, TYPE G INLET
IPCOS	INLET PROTECTION, CURB ON SUMP, TYPE R INLET
MWP	MASONRY WORK PROTECTION
PTP	PORTABLE TOILET PROTECTION
RS	ROCK SOCK
SCL	SEDIMENT CONTROL LOGS
SF	PROPOSED SILT FENCE
SMC	SEED MULCH CRIMP
SR	SURFACE ROUGHENING
SSA	STABILIZED STORAGE AREA
STP	SIDEWALK TRANSITION PROTECTION
TI	TEMPORARY IRRIGATION
TSB	TEMPORARY SEDIMENT BASIN
TTM	TUBULAR TRAFFIC MARKER
VTC	VEHICLE TRACKING CONTROL
→	DRAINAGE DIRECTION

Install Sediment Control Log at Back of ALL Curb/Sidewalk

No Work Shall Occur in This Area

No Work Shall Occur in This Area

No Work Shall Occur in This Area

Show Existing Stormwater Utilities (Pipe) on the Interim Erosion Control Plan Sheet, Shaded

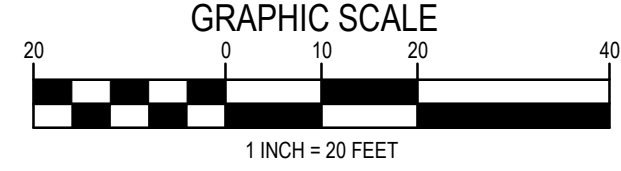
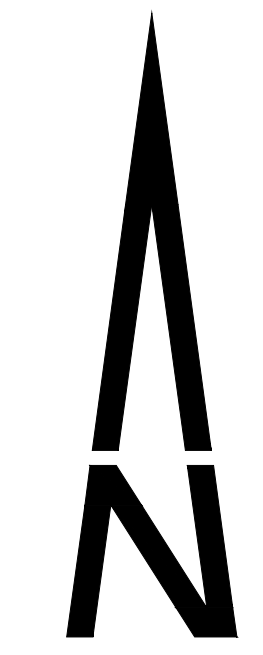
Show Proposed Stormwater Utilities (Pipe) on the Interim Erosion Control Plan Sheet

Show Parker's Complete Legend of Keys/Symbols

Add General Notes:
 MASONRY WORK PROTECTION IS REQUIRED FOR CONSTRUCTION OF BUILDINGS
 ANY ONSITE BULK FUEL STORAGE REQUIRES A FIRE LIFE SAFETY PERMIT FROM THE TOWN OF PARKER PRIOR TO INSTALLATION
 ALL NATIVE SEEDED SLOPED AREAS 4V:1H AND STEEPER MUST BE COVERED WITH STRAW EROSION CONTROL BLANKET, SB150BN or EQUIVALENT

TOWN OF PARKER NOTES

- ALL SILT FENCES MUST BE INSTALLED ON 5-FOOT CENTERS.
- THE TRUE LOCATION OF THE CWA MAY BE DETERMINED BY THE TOWN AND ECS.
- THE TRUE LOCATION OF THE PTP MAY BE DETERMINED BY THE TOWN AND ECS.
- PLACE SCL IMMEDIATELY BEHIND CURB AND SIDEWALK DOWN GRADIENT OF DISTURBED AREAS. USE 12" LOGS.
- IF SF IS NOT INSTALLED ON THE BACK OF CURB, ECB MAY BE NECESSARY IN THE GAP.
- ALL SOILED STREETS, CURBS, GUTTERS, SIDEWALKS, DRIVE AISLES, ETC., MUST BE THOROUGHLY CLEANED BY 5 PM EACH WORK DAY AND DURING THE DAY WHEN LEVEL OF SOIL EXCEEDS A LOW LEVEL AS DETERMINED BY THE TOWNS INSPECTOR.
- LOT PROTECTION IS REQUIRED ON ALL COMMERCIAL LOTS WHEN LANDSCAPING IS NOT POSSIBLE.
- TO REDUCE THE POTENTIAL FOR CLOGGING OF DEBRIS GRATES, NO STRAW MULCH SHALL BE USED WITHIN THE EXCESS URBAN RUNOFF VOLUME OF A DETENTION BASIN. INSTEAD, EROSION CONTROL BLANKET SHALL BE INSTALLED FOR A WIDTH OF AT LEAST 6-FEET ON BOTH SIDES OF THE CONCRETE LOW FLOW CHANNELS OR UP TO A DEPTH OF 1-FOOT IN SOIL RIPRAP OR BENCHED LOW FLOW CHANNELS. ADDITIONALLY, HYDRAULICALLY-APPLIED WOOD FIBER MULCH, STABILIZED FIBER MATRIX, BONDED FIBER MATRIX, OR FLEXIBLE GROWTH MEDIUM SHALL BE USED IN ALL OTHER AREAS WITHIN THE EXCESS URBAN RUNOFF VOLUME OF THE DETENTION BASIN. THE BLANKET AND HYDRAULICALLY-APPLIED MULCH SHALL COMPLY WITH THE MATERIALS AND INSTALLATION REQUIREMENTS FOR EROSION CONTROL BLANKETS AS REQUIRED BY THE TOWNS CBMP PROGRAM, AND WHERE APPLICABLE, THE PRODUCT MANUFACTURER.



THE TOWN OF PARKER REVIEW CONSTITUTES GENERAL COMPLIANCE WITH THE TOWN'S STANDARDS AND APPROVED VARIANCES. SUBJECT TO THESE PLANS BEING STAMPED, SIGNED, AND DATED BY THE PROFESSIONAL ENGINEER OF RECORD, REVIEW BY THE TOWN DOES NOT CONSTITUTE APPROVAL OF THE PLAN DESIGN OR ACCURACY AND CORRECTNESS OF ENGINEERING CALCULATIONS. ERRORS IN THE DESIGN OR CALCULATIONS REMAIN THE RESPONSIBILITY OF THE REGISTERED PROFESSIONAL ENGINEER WHOSE STAMP AND SIGNATURE ARE AFFIXED TO THIS DOCUMENT.

THIS REVIEW DOES NOT CONSTITUTE APPROVAL OF ANY PRIVATE ON-SITE IMPROVEMENTS WHICH MAY BE SHOWN. CONSTRUCTION CANNOT COMMENCE UNTIL ALL REQUIRED DRAINAGE/TRAFFIC REPORT(S), FINAL DEVELOPMENT PLAN(S), SPECIAL REVIEW(S), GRADING PERMIT, AND/OR OTHER PERMITS ARE COMPLETE, APPROVED AND ON FILE WITH THE TOWN OF PARKER

TOWN OF PARKER, DIRECTOR OF ENGINEERING _____ DATE _____



THE TYPE, SIZE, LOCATION, AND NUMBER OF ALL KNOWN UNDERGROUND UTILITIES ARE APPROXIMATE WHEN SHOWN ON THE DRAWINGS. IT SHALL BE THE RESPONSIBILITY OF THE CONTRACTOR TO VERIFY THE EXISTENCE AND LOCATION OF ALL UNDERGROUND UTILITIES ON THE SITE, AND OFFSITE IN WORK AREAS. LOCATION OF EXISTING UTILITIES SHALL BE VERIFIED BY CONTRACTOR PRIOR TO DATE OF CONSTRUCTION. FOR INFORMATION CONTACT: UTILITY NOTIFICATION CENTER OF COLORADO (UNCC) - 1-800-922-1987. IT IS THE CONTRACTOR'S RESPONSIBILITY TO FIELD VERIFY SIZE AND HORIZONTAL AND VERTICAL LOCATIONS OF EXISTING FACILITIES PRIOR TO CONSTRUCTION AND NOTIFY THE ENGINEER OF ANY DISCREPANCIES.

THE CONTRACTOR SHALL BE RESPONSIBLE FOR ANY DAMAGE TO EXISTING IMPROVEMENTS AND UTILITIES AND SHALL REPAIR ANY DAMAGE AT HIS EXPENSE.

PERCEPTION DESIGN GROUP, INC.
 6801 SOUTH PIERCE STREET, SUITE 315, LITTLETON, CO 80120 303-232-9088
 WWW.PERCCEPTIONDESIGNGROUP.COM

NO.	DATE	DESCRIPTION
1	09/17/25	1ST SUBMITTAL

INTERIM CBMP PLAN

HUNTINGTON NATIONAL BANK

LOT 3A - PARKER POINTE SUBDIVISION FILING NO. 1, AMENDMENT NO. 1, LOCATED IN THE NORTHEAST 1/4 OF SECTION 3, TOWNSHIP 6 SOUTH, RANGE 68 WEST OF THE 6TH P.M., TOWN OF PARKER, COUNTY OF DOUGLAS, STATE OF COLORADO

Design By: CLN

Approved By: JWD

Project No.: 2025-005

SHEET

C5.11

All Slopes 4:1 or Steeper must be Covered with ECB and Labeled, No Slopes Steeper than 3:1 Allowed

No Work Shall Occur in This Area
S89°43'05"E 230.07'

No Work Shall Occur in This Area

No Work Shall Occur in This Area

No Work Shall Occur in This Area

Add General Notes:
MASONRY WORK PROTECTION IS REQUIRED FOR CONSTRUCTION OF BUILDINGS
 ANY ONSITE BULK FUEL STORAGE REQUIRES A FIRE LIFE SAFETY PERMIT FROM THE TOWN OF PARKER PRIOR TO INSTALLATION
 ALL NATIVE SEEDED SLOPED AREAS 4V:1H AND STEEPER MUST BE COVERED WITH STRAW EROSION CONTROL BLANKET, SB150BN or EQUIVALENT

NOTES

- ALL SILT FENCES MUST BE INSTALLED ON 5-FOOT CENTERS.
- THE TRUE LOCATION OF THE CWA MAY BE DETERMINED BY THE TOWN AND ECS.
- THE TRUE LOCATION OF THE PTP MAY BE DETERMINED BY THE TOWN AND ECS.
- PLACE SCL IMMEDIATELY BEHIND CURB AND SIDEWALK DOWN GRADIENT OF DISTURBED AREAS. USE 12" LOGS.
- IF SF IS NOT INSTALLED ON THE BACK OF CURB, ECB MAY BE NECESSARY IN THE GAP.
- ALL SOILED STREETS, CURBS, GUTTERS, SIDEWALKS, DRIVE AISLES, ETC., MUST BE THOROUGHLY CLEANED BY 5 PM EACH WORK DAY AND DURING THE DAY WHEN LEVEL OF SOIL EXCEEDS A LOW LEVEL AS DETERMINED BY THE TOWNS INSPECTOR.
- LOT PROTECTION IS REQUIRED ON ALL COMMERCIAL LOTS WHEN LANDSCAPING IS NOT POSSIBLE.
- TO REDUCE THE POTENTIAL FOR CLOGGING OF DEBRIS GRATES, NO STRAW MULCH SHALL BE USED WITHIN THE EXCESS URBAN RUNOFF VOLUME OF A DETENTION BASIN. INSTEAD, EROSION CONTROL BLANKET SHALL BE INSTALLED FOR A WIDTH OF AT LEAST 6-FEET ON BOTH SIDES OF THE CONCRETE LOW FLOW CHANNELS OR UP TO A DEPTH OF 1-FOOT IN SOIL RIPRAP OR BENCHED LOW FLOW CHANNELS. ADDITIONALLY, HYDRAULICALLY-APPLIED WOOD FIBER MULCH, STABILIZED FIBER MATRIX, BONDED FIBER MATRIX, OR FLEXIBLE GROWTH MEDIUM SHALL BE USED IN ALL OTHER AREAS WITHIN THE EXCESS URBAN RUNOFF VOLUME OF THE DETENTION BASIN. THE BLANKET AND HYDRAULICALLY-APPLIED MULCH SHALL COMPLY WITH THE MATERIALS AND INSTALLATION REQUIREMENTS FOR EROSION CONTROL BLANKETS AS REQUIRED BY THE TOWN'S CBMP PROGRAM, AND WHERE APPLICABLE, THE PRODUCT MANUFACTURER.

THE TYPE, SIZE, LOCATION, AND NUMBER OF ALL KNOWN UNDERGROUND UTILITIES ARE APPROXIMATE WHEN SHOWN ON THE DRAWINGS. IT SHALL BE THE RESPONSIBILITY OF THE CONTRACTOR TO VERIFY THE EXISTENCE AND LOCATION OF ALL UNDERGROUND UTILITIES ON THE SITE, AND OFFSITE IN WORK AREAS. LOCATION OF EXISTING UTILITIES SHALL BE VERIFIED BY CONTRACTOR PRIOR TO DATE OF CONSTRUCTION. FOR INFORMATION CONTACT: UTILITY NOTIFICATION CENTER OF COLORADO (UNCC) - 1-800-922-1987. IT IS THE CONTRACTOR'S RESPONSIBILITY TO FIELD VERIFY SIZE AND HORIZONTAL AND VERTICAL LOCATIONS OF EXISTING FACILITIES PRIOR TO CONSTRUCTION AND NOTIFY THE ENGINEER OF ANY DISCREPANCIES.

THE CONTRACTOR SHALL BE RESPONSIBLE FOR ANY DAMAGE TO EXISTING IMPROVEMENTS AND UTILITIES AND SHALL REPAIR ANY DAMAGE AT HIS EXPENSE.



LEGEND		PROPERTY LINE
CD		CHECK DAM
CF		CONSTRUCTION FENCE
CP		CULVERT PROTECTION
CWA		CONCRETE WASHOUT AREA
DD		DIVERSION DITCH
DP		DETENTION POND PROTECTION
DTC		DEBRIS TRASH CONTROL
ECB		EROSION CONTROL BLANKET
IPAN		INLET PROTECTION, CURB ON GRADE, TYPE R INLET
PCOG		INLET PROTECTION, CURB ON SUMP, TYPE R INLET
PCOS		INLET PROTECTION, CURB ON SUMP, TYPE R INLET
MWP		MASONRY WORK PROTECTION
PTP		PORTABLE TOILET PROTECTION
RS		ROCK SOCK
SCL		SEDIMENT CONTROL LOGS
SF		PROPOSED SILT FENCE
SMC		SEED MULCH CRIMP
SR		SURFACE ROUGHENING
SSA		STABILIZED STORAGE AREA
STP		SIDEWALK TRANSITION PROTECTION
TI		TEMPORARY IRRIGATION
TSB		TEMPORARY SEDIMENT BASIN
TTM		TUBULAR TRAFFIC MARKER
VTC		VEHICLE TRACKING CONTROL
		DRAINAGE DIRECTION

Show Parker's Complete Legend of Keys/Symbols



PREPARED UNDER THE DIRECT SUPERVISION OF JERRY W. DAVIDSON, P.E. COLORADO REG # 30226 FOR AND ON BEHALF OF PERCEPTION DESIGN GROUP, INC.

NO.	DATE	DESCRIPTION
1	09/17/25	1ST SUBMITTAL

FINAL CBMP PLAN
HUNTINGTON NATIONAL BANK
 LOT 3A-PARKER POINTE SUBDIVISION FILING NO. 1, AMENDMENT NO. 1, LOCATED IN THE NORTHEAST 1/4 OF SECTION 3, TOWNSHIP 6 SOUTH, RANGE 66 WEST OF THE 6TH P.M., TOWN OF PARKER, COUNTY OF DOUGLAS, STATE OF COLORADO

Design By: CLN
 Approved By: JWD
 Project No.: 2025-005

SHEET
C5.12

THE TOWN OF PARKER REVIEW CONSTITUTES GENERAL COMPLIANCE WITH THE TOWN'S STANDARDS AND APPROVED VARIANCES, SUBJECT TO THESE PLANS BEING STAMPED, SIGNED, AND DATED BY THE PROFESSIONAL ENGINEER OF RECORD. REVIEW BY THE TOWN DOES NOT CONSTITUTE APPROVAL OF THE PLAN DESIGN OR ACCURACY AND CORRECTNESS OF ENGINEERING CALCULATIONS. ERRORS IN THE DESIGN OR CALCULATIONS REMAIN THE RESPONSIBILITY OF THE REGISTERED PROFESSIONAL ENGINEER WHOSE STAMP AND SIGNATURE ARE AFFIXED TO THIS DOCUMENT.

THIS REVIEW DOES NOT CONSTITUTE APPROVAL OF ANY PRIVATE ON-SITE IMPROVEMENTS WHICH MAY BE SHOWN. CONSTRUCTION CANNOT COMMENCE UNTIL ALL REQUIRED DRAINAGE/TRAFFIC REPORT(S), FINAL DEVELOPMENT PLAN(S), SPECIAL REVIEW(S), GRADING PERMIT, AND/OR OTHER PERMITS ARE COMPLETE, APPROVED AND ON FILE WITH THE TOWN OF PARKER

TOWN OF PARKER, DIRECTOR OF ENGINEERING _____ DATE _____

