

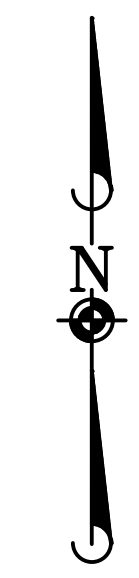
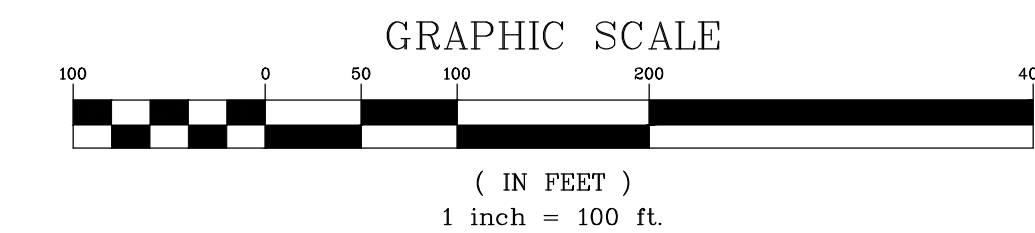




# COMPARK VILLAGE SOUTH FILING NO. 1

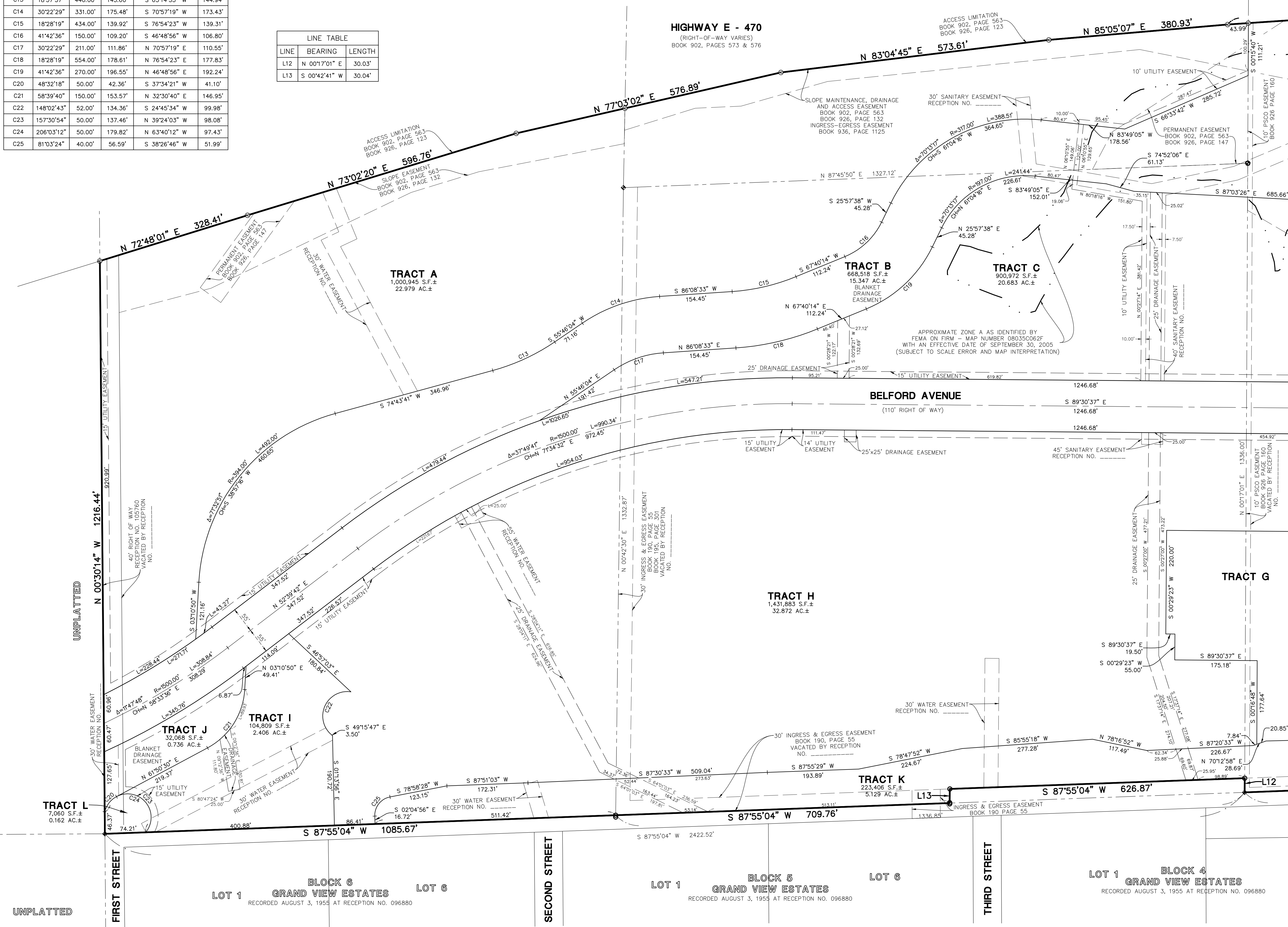
## MINOR DEVELOPMENT PLAT

PLANNING AREAS 13-18 (COMPARK VILLAGE PD - FOURTH AMENDMENT)  
 PART OF THE SOUTH HALF OF SECTION 6, TOWNSHIP 6 SOUTH, RANGE 66 WEST OF THE SIXTH PRINCIPAL MERIDIAN,  
 TOWN OF PARKER, COUNTY OF DOUGLAS, STATE OF COLORADO  
 12 TRACTS - 150.119 ACRES



CURVE	DELTA	RADIUS	LENGTH	CHORD BEARING	CHORD
C13	18°57'37"	440.00'	145.60'	S 65°14'53" W	144.94'
C14	30°22'29"	331.00'	175.48'	S 70°57'19" W	173.43'
C15	18°28'19"	434.00'	139.92'	S 76°54'23" W	139.31'
C16	41°42'36"	150.00'	109.20'	S 46°48'56" W	106.80'
C17	30°22'29"	211.00'	111.86'	N 70°57'19" E	110.55'
C18	18°28'19"	554.00'	178.61'	N 76°54'23" E	177.83'
C19	41°42'36"	270.00'	196.55'	N 46°48'56" E	192.24'
C20	48°32'18"	50.00'	42.36'	S 37°34'21" W	41.10'
C21	58°39'40"	150.00'	153.57'	N 32°30'40" E	146.95'
C22	148°02'43"	52.00'	134.36'	S 24°45'34" W	99.98'
C23	157°30'54"	50.00'	137.46'	N 39°24'03" W	98.08'
C24	206°03'12"	50.00'	179.82'	N 63°40'12" W	97.43'
C25	81°03'24"	40.00'	56.59'	S 38°26'46" W	51.99'

LINE	BEARING	LENGTH
L12	N 00°17'01" E	30.03'
L13	S 00°42'41" W	30.04'



- LEGEND**
- EX. PROPERTY LINE
  - - - EX. SECTION LINE
  - - - EX. LOT LINE
  - - - EX. FLOOD ZONE LIMITS
  - SECTION CORNER
  - FOUND NO. 5 REBAR AS NOTED
  - FOUND 1" PIPE
  - FOUND NAIL & 0.75" BRASS DISC STAMPED "E470 RLS 10377"
  - FOUND NAIL & 0.75" BRASS DISC STAMPED "75" WC PLS 25369"
  - FOUND NO. 5 REBAR
  - FOUND NO. 5 REBAR STAMPED "75" WC PLS 25369"
  - SET NO. 5 REBAR WITH 1.25" Y.P.C. PLS 36445 FLUSH WITH GROUND
  - 0.00 = BOUNDARY DIMENSION
  - 0.00 = LOT DIMENSION

DATE	REVISIONS	COMMENTS
04/09/16	1ST SUBMITTAL	COMMENTS

**Manhard CONSULTING LTD.**  
 10000 E. Harvard Ave., Suite 100, Denver, CO 80231  
 303.755.8888  
 Manhard Consulting Ltd. is an Equal Opportunity Employer. Minorities and women are encouraged to apply.  
 Civil Engineers • Surveyors • Water Resource Engineers • Water & Wastewater Engineers • Planners • Construction Managers • Environmental Scientists • Landscape Architects

COMPARK VILLAGE SOUTH FILING NO. 1  
 TOWN OF PARKER, COUNTY OF DOUGLAS, COLORADO  
 MINOR DEVELOPMENT PLAT

PROJ. MGR.: JMR  
 PROJ. ASSOC.: BJP  
 DRAWN BY: GDP/BJP  
 DATE: 11/23/15  
 SCALE: 1" = 100'

SHEET 3 OF 4  
 OOC.LCPK3.03



FOR AND ON BEHALF OF  
 MANHARD CONSULTING

April 8, 2016 - 16:26 Dwg Name: P:\Cpck3\Compark3-ultimate\Belford\_Ava\Drawn\Sur\Drawn\Plat of Subdivision 01-00C.LCPK3.03-FS.dwg Updated By: BPrin

