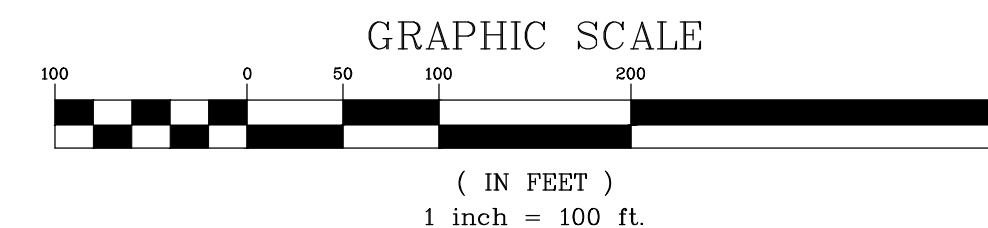


COMPARK VILLAGE SOUTH FILING NO. 1

MINOR DEVELOPMENT PLAT

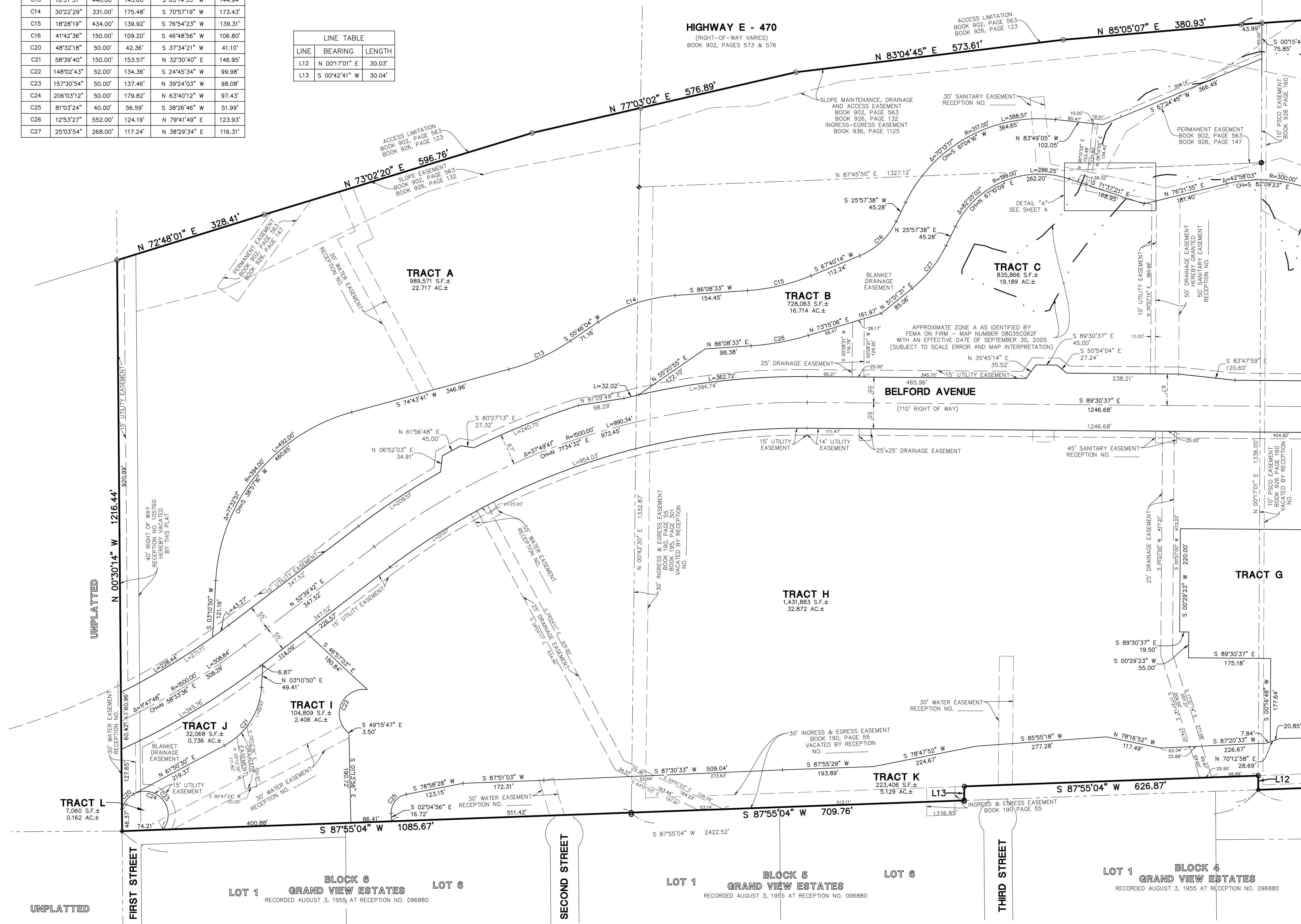
PLANNING AREAS 13-18 (COMPARK VILLAGE PD - FOURTH AMENDMENT)

PART OF THE SOUTH HALF OF SECTION 6, TOWNSHIP 6 SOUTH, RANGE 66 WEST OF THE SIXTH PRINCIPAL MERIDIAN,
TOWN OF PARKER, COUNTY OF DOUGLAS, STATE OF COLORADO
12 TRACTS - 150.119 ACRES



CURVE TABLE					
CURVE	DELTA	RADIUS	LENGTH	CHORD BEARING	CHORD
C13	18°57'37"	440.00'	145.60'	S 65°14'53" W	144.94'
C14	30°22'29"	331.00'	175.48'	S 70°57'19" W	173.43'
C15	18°28'19"	434.00'	139.92'	S 76°54'23" W	139.31'
C16	41°42'36"	150.00'	109.20'	S 46°48'56" W	106.80'
C20	48°32'18"	50.00'	42.36'	S 37°34'21" W	41.10'
C21	58°39'40"	150.00'	153.57'	N 32°30'40" E	146.95'
C22	148°02'43"	52.00'	134.36'	S 24°45'34" W	99.98'
C23	157°30'54"	50.00'	137.46'	N 39°24'03" W	98.08'
C24	206°03'12"	50.00'	179.82'	N 63°40'12" W	97.43'
C25	81°03'24"	40.00'	56.59'	S 38°26'46" W	51.99'
C26	12°53'27"	552.00'	124.19'	N 79°41'49" E	123.93'
C27	25°03'54"	268.00'	117.24'	N 38°29'34" E	116.31'

LINE TABLE		
LINE	BEARING	LENGTH
L12	N 00°17'01" E	30.03'
L13	S 00°42'41" W	30.04'



LEGEND	
---	= EX. PROPERTY LINE
- - - -	= EX. SECTION LINE
- · - · -	= EX. LOT LINE
○	= EX. FLOOD ZONE LIMITS
○	= SECTION CORNER
○	= FOUND NO. 5 REBAR AS NOTED
○	= FOUND 1" PIPE
○	= FOUND NAIL & 0.75" BRASS DISC STAMPED "E470 RLS 10377"
○	= FOUND NAIL & 0.75" BRASS DISC STAMPED "75" WC PLS 25369"
○	= FOUND NO. 5 REBAR
○	= FOUND W/2" ALUMINUM CAP STAMPED "75" WC PLS 25369"
○	= SET NO. 5 REBAR WITH 1.25" Y.P.C. PLS 38445 FLUSH WITH GROUND
○	= BOUNDARY DIMENSION
○	= LOT DIMENSION

DATE	REVISIONS
06/27/16	2ND SUBMITTAL COMMENTS
07/09/16	1ST SUBMITTAL COMMENTS

Manhard CONSULTING LTD.
 1800 E. Hampden Ave., Suite 200, Aurora, CO 80012
 303.733.8888
 Manhard Consulting Ltd. is an Equal Opportunity Employer
 Civil Engineer • Surveyor • Water Resource Engineer • Wetland & Wetland Engineer • Planner
 Construction Managers • Environmental Scientists • Landscape Architects

COMPARK VILLAGE SOUTH FILING NO. 1
 TOWN OF PARKER, COUNTY OF DOUGLAS, COLORADO
 MINOR DEVELOPMENT PLAT

PROJ. MGR.: JMR
 PROJ. ASSOC.: BJP
 DRAWN BY: GDP/BJP
 DATE: 11/23/15
 SCALE: 1" = 100'

SHEET
3 OF **4**
 00C.LCPK3.03



FOR AND ON BEHALF OF
 MANHARD CONSULTING

June 28, 2016 - 14:12 - Dept Name: P:\Projects\3\ComparkVillage\Drawings\Plat of Subdivision\03-00C.LCPK3.03-BS.dwg - Updated By: BJP/BJP

