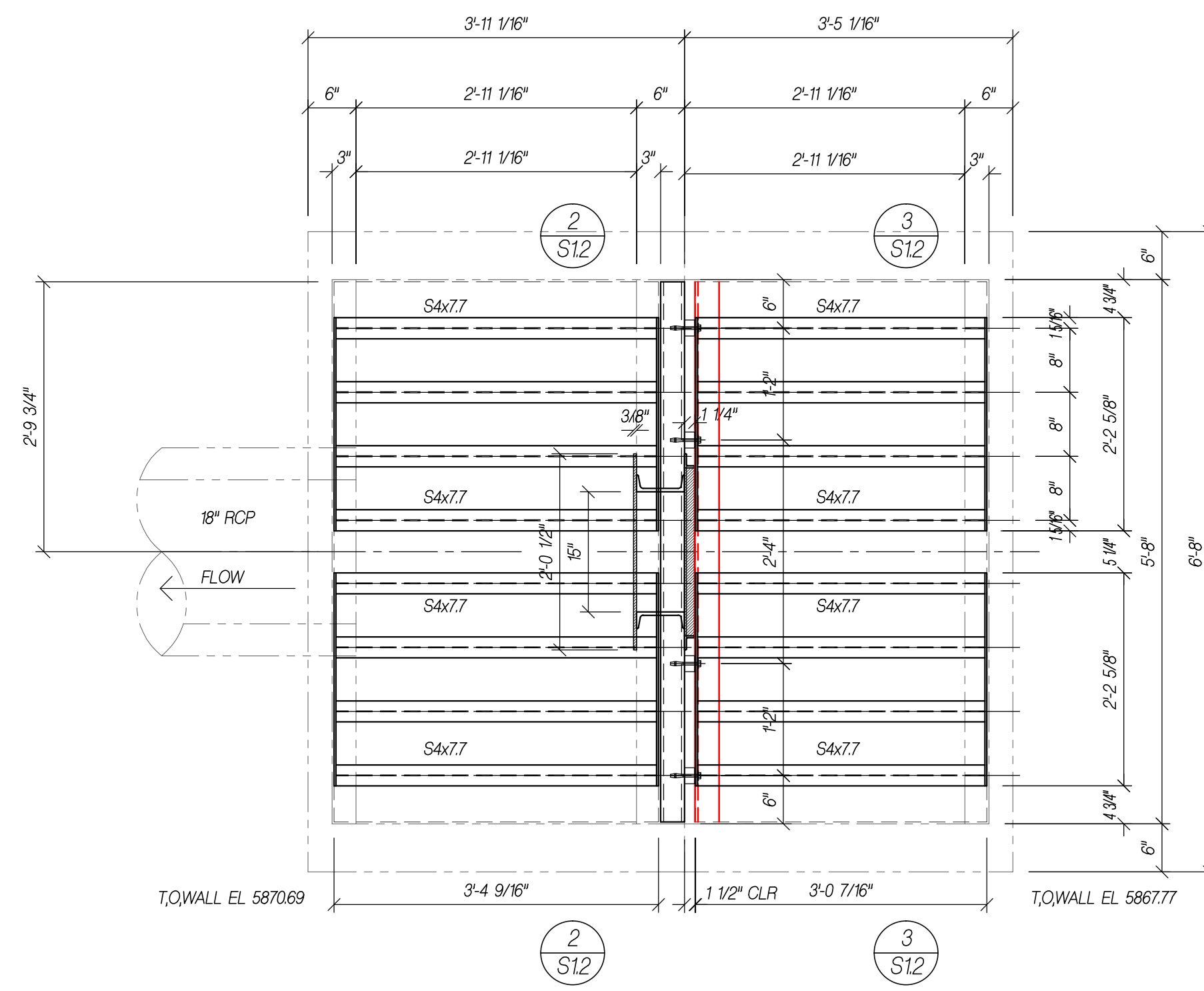
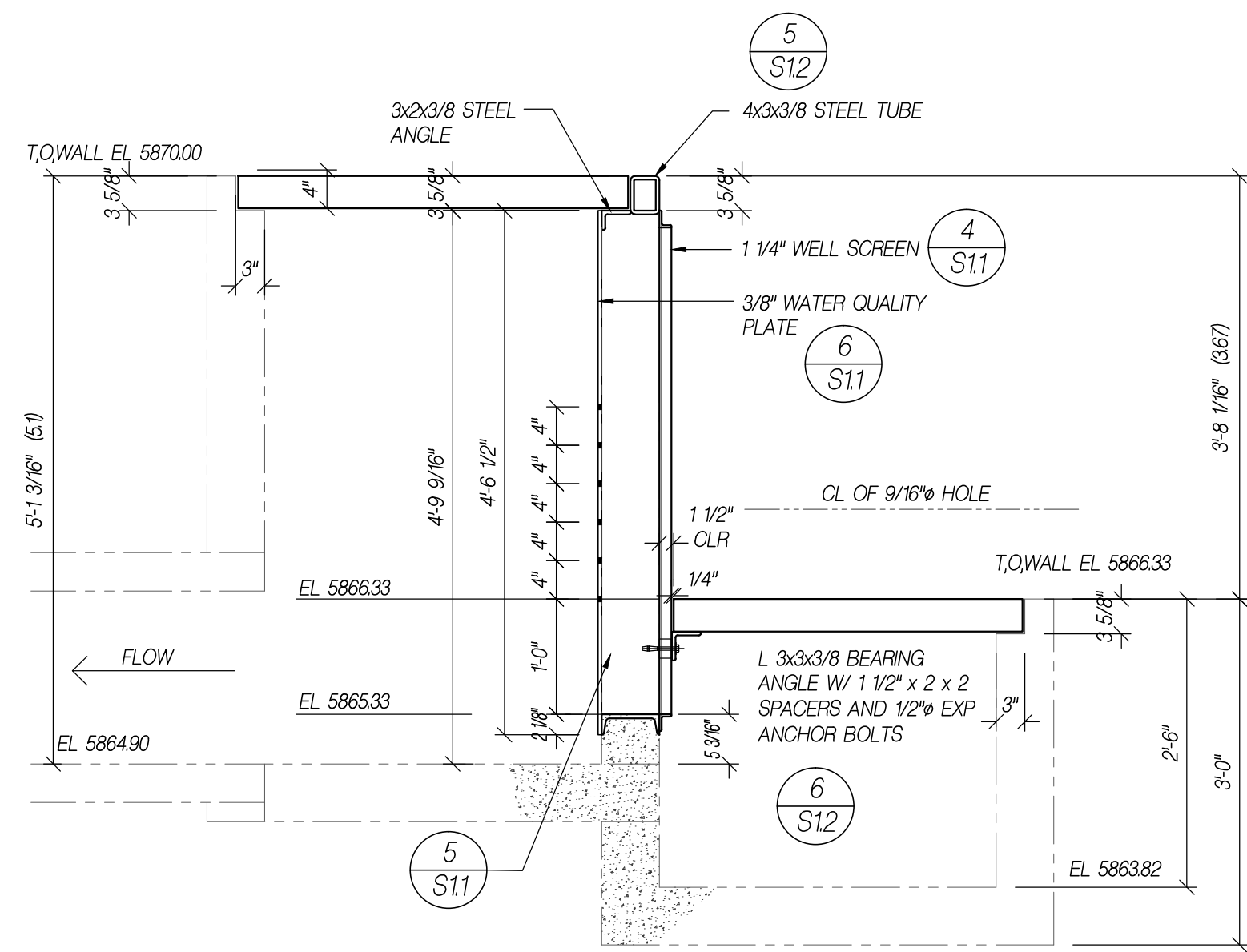


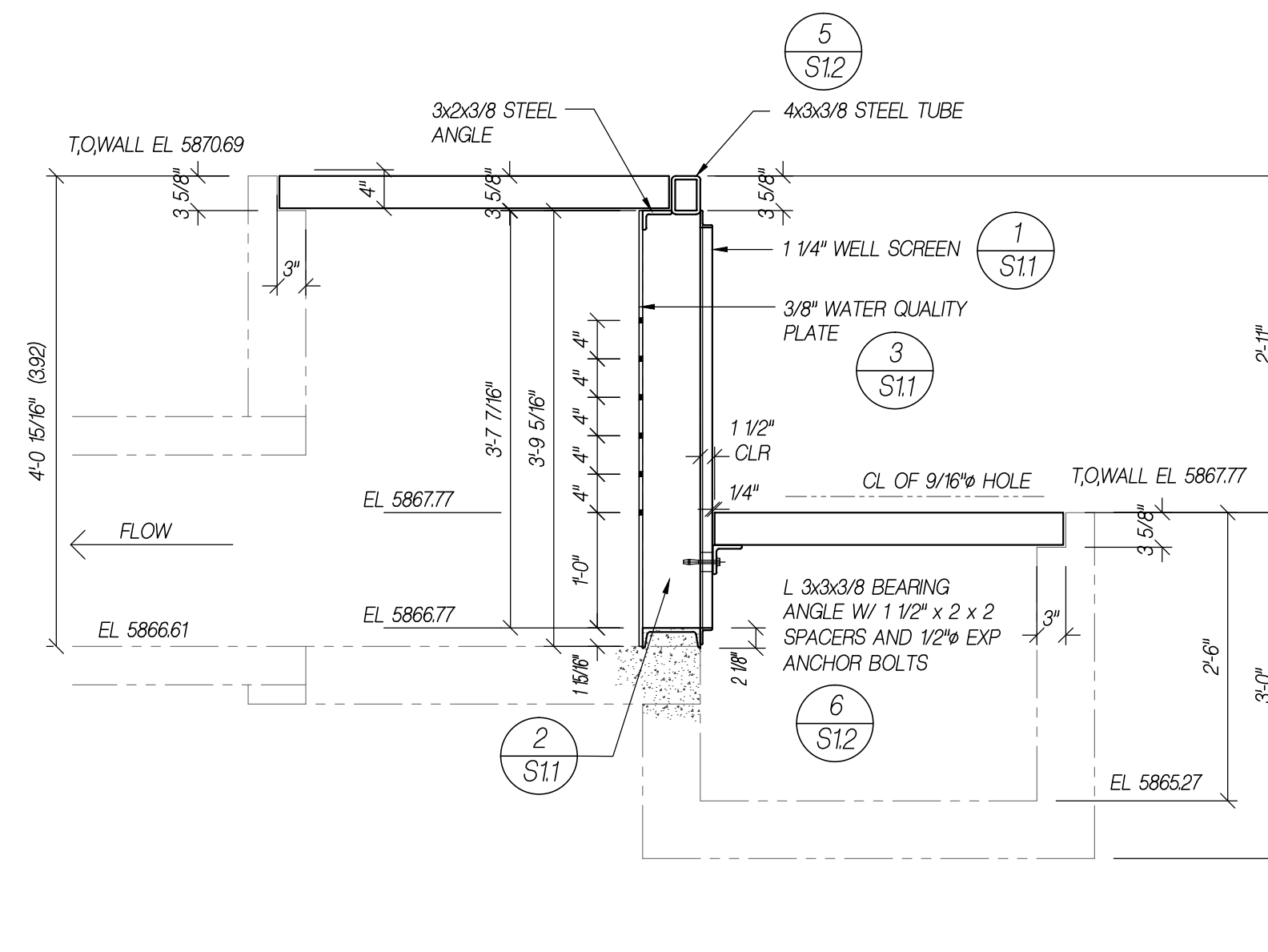
3 EAST POND PLAN VIEW
SCALE: 3/4"=1'-0"



1 WEST POND PLAN VIEW
SCALE: 3/4"=1'-0"



4 EAST POND ELEVATION
SCALE: 3/4"=1'-0"



2 WEST POND ELEVATION
SCALE: 3/4"=1'-0"

- No Exception Taken
- Approved as Noted
- Rejected
- Revise and Resubmit

This review is only for general conformance with the design concept of the project and general compliance with the information given in the Contract Documents. Corrections or comments made on the submittal during this review do not relieve contractor from compliance with the requirements of the plans and specifications. Approval of a specific item shall not include approval of an assembly of which the item is a component. Contractor is responsible for: dimensions to be confirmed and correlated at the jobsite, information that pertains solely to the fabrication process or to the means, methods, techniques, sequences and procedures of construction; coordination of his or her Work with that of all other trades; and for performing all work in a safe and satisfactory manner.

Manhard Consulting, Ltd.

Date: 03/17/2021 By: Gary Iwata

NOTE: FIELD VERIFY ALL DIMENSIONS BEFORE FABRICATION.

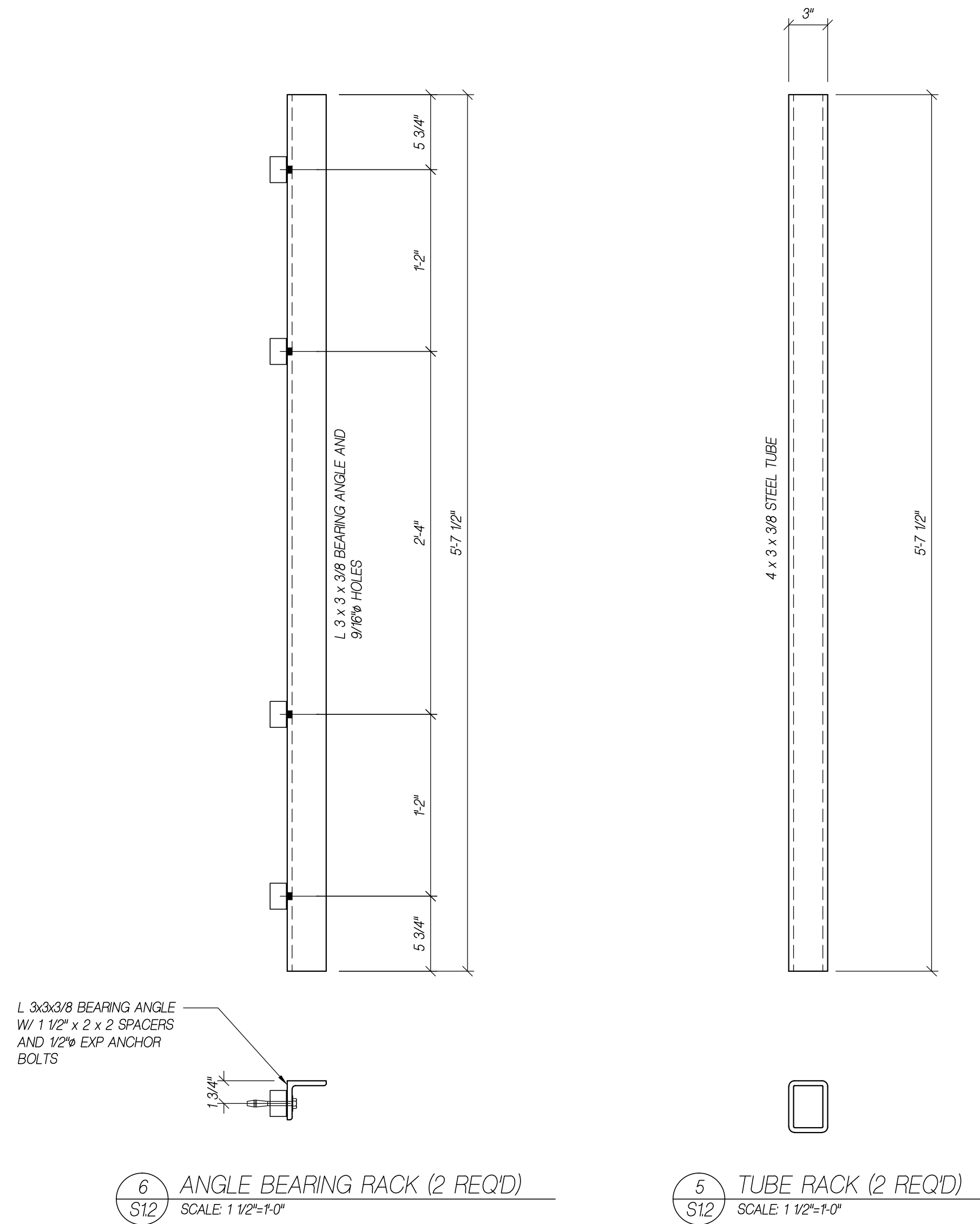
GS QUALITY WELDING LLC
600 COUNTY ROAD 21
BRIGHTON, COLORADO 80603
720-626-8116

No.	Revision/Issue	Date
1	TYPE APPROVAL	1/11/2021
2	REVISED	1/11/2021
3	REVISED	3/10/2021

SHEET TITLE:
COMPARK VILLAGE SOUTH
WEST, EAST POND, TYPE D
PARKER, COLORADO
GS QUALITY WELDING LLC - 2021-56

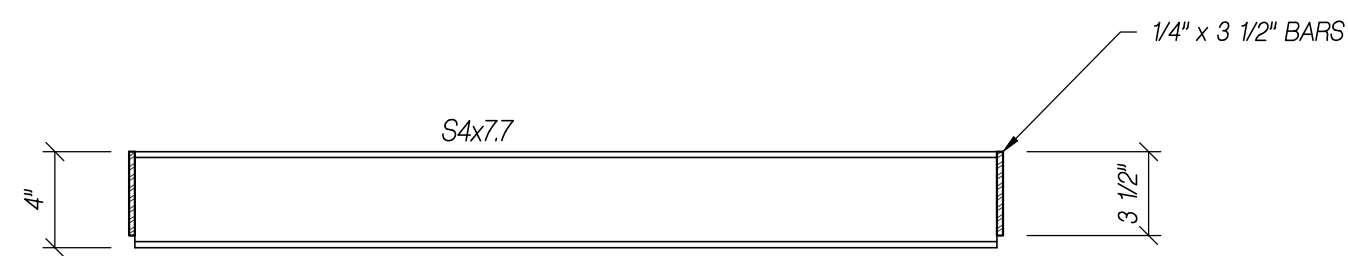
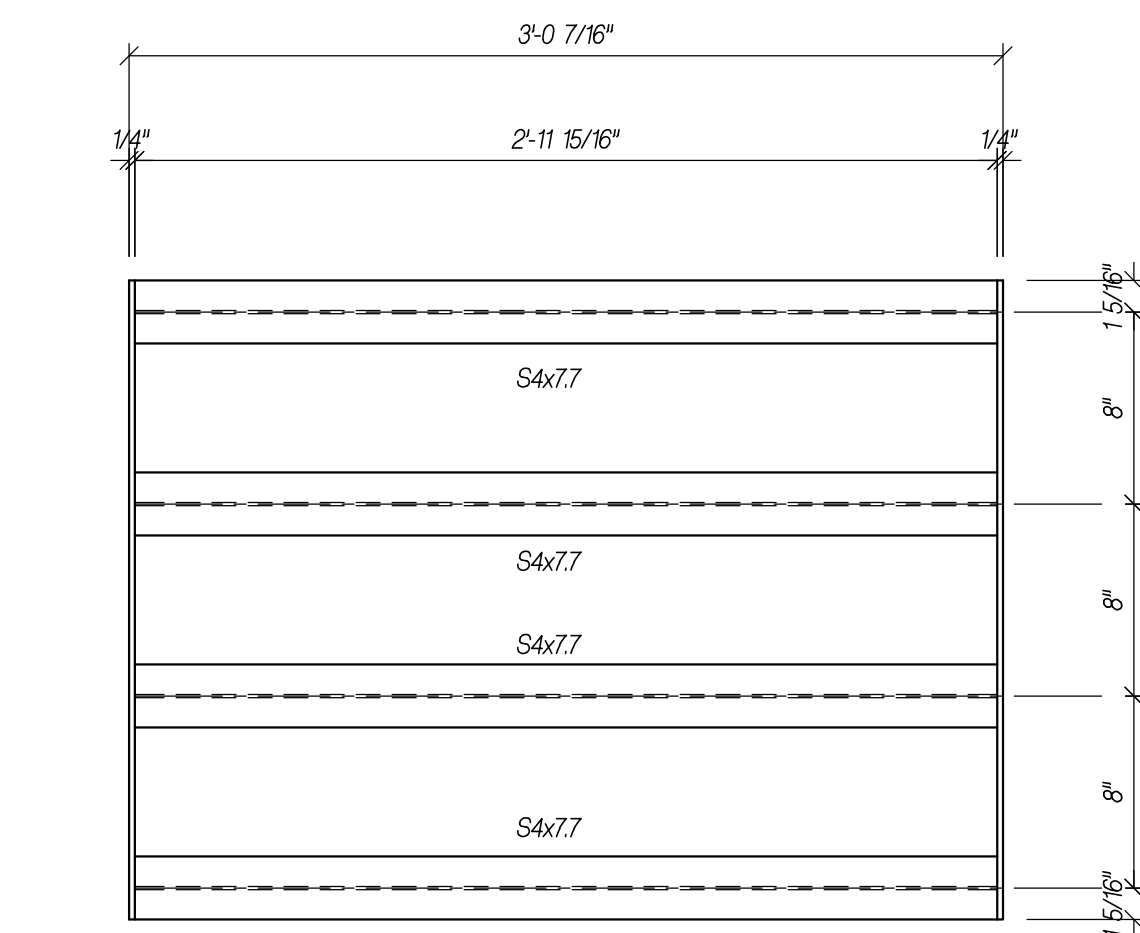
Project Manager
Abraham D. Solo / Cesar Solo
Drawn by
W.C.S.
DATE:
1/11/2021

SHEET NO.
S1.0

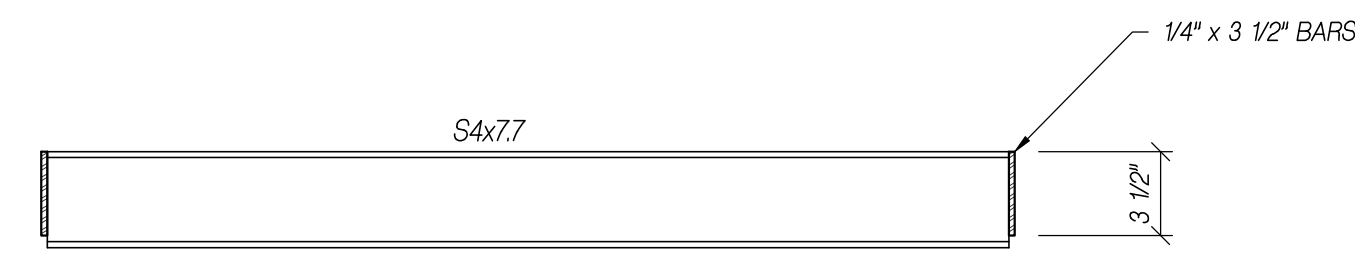
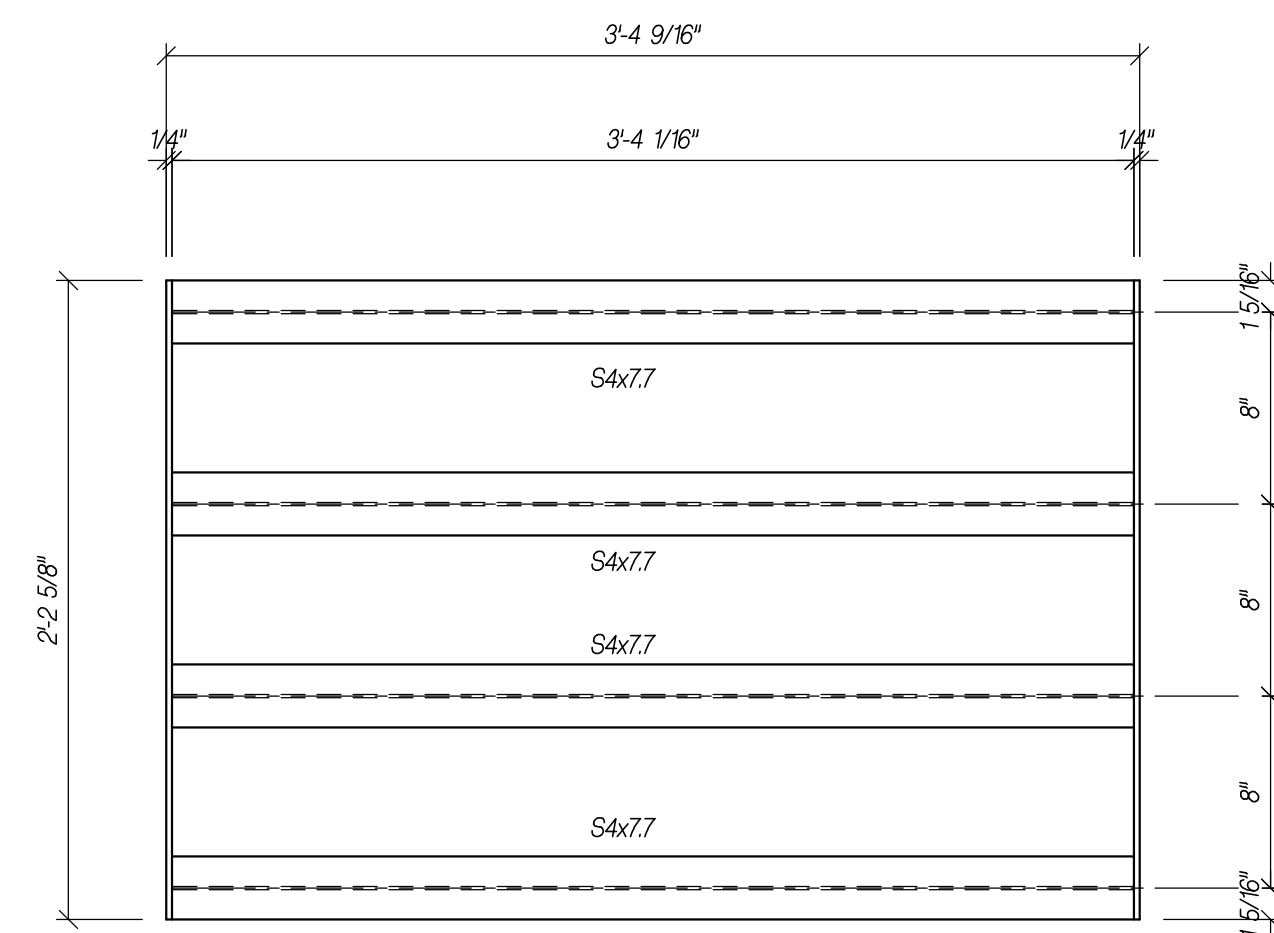


WEST POND FILTERS
EAST POND FILTERS

WEST POND FILTERS
EAST POND FILTERS



WEST POND FILTERS
EAST POND FILTERS



No Exception Taken
 Approved as Noted
 Rejected
 Revise and Resubmit

This review is only for general conformance with the design concept of the project and general compliance with the information given in the Contract Documents. Corrections or comments made on the submittal during this review do not relieve contractor from compliance with the requirements of the plans and specifications. Approval of a specific item shall not include approval of an assembly of which the item is a component. Contractor is responsible for: dimensions to be confirmed and correlated at the jobsite, information that pertains solely to the fabrication process or to the means, methods, techniques, sequences and procedures of construction; coordination of his or her Work with that of all other trades; and for performing all work in a safe and satisfactory manner.

Manhard Consulting, Ltd.
 Date: 03/17/2021 By: Gary Iwata

No.	Revision/Issue	Date
1	TYPE APPROVAL	1/11/2021
2	REVISED	3/10/2021
3	REVISED	3/10/2021

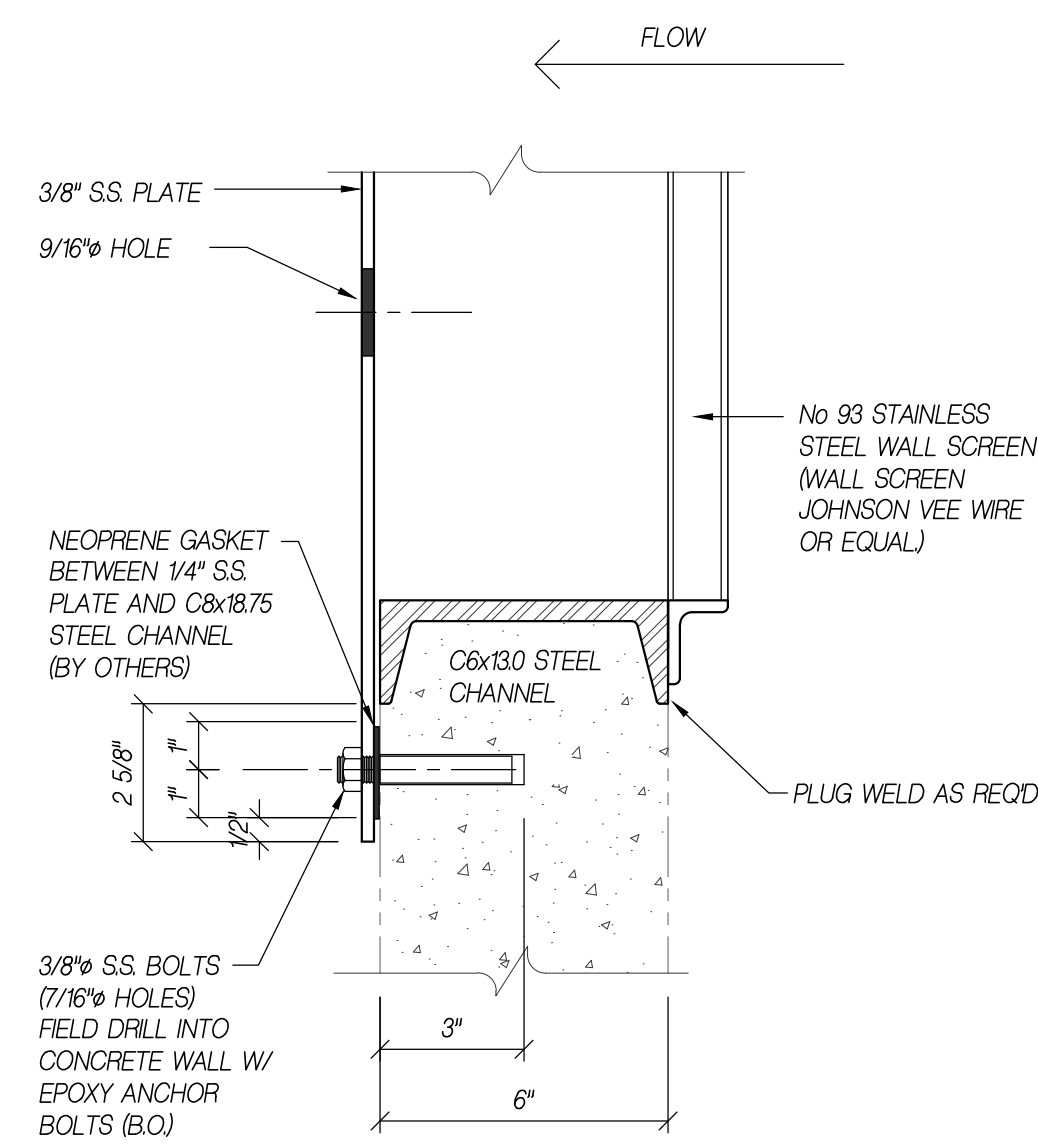
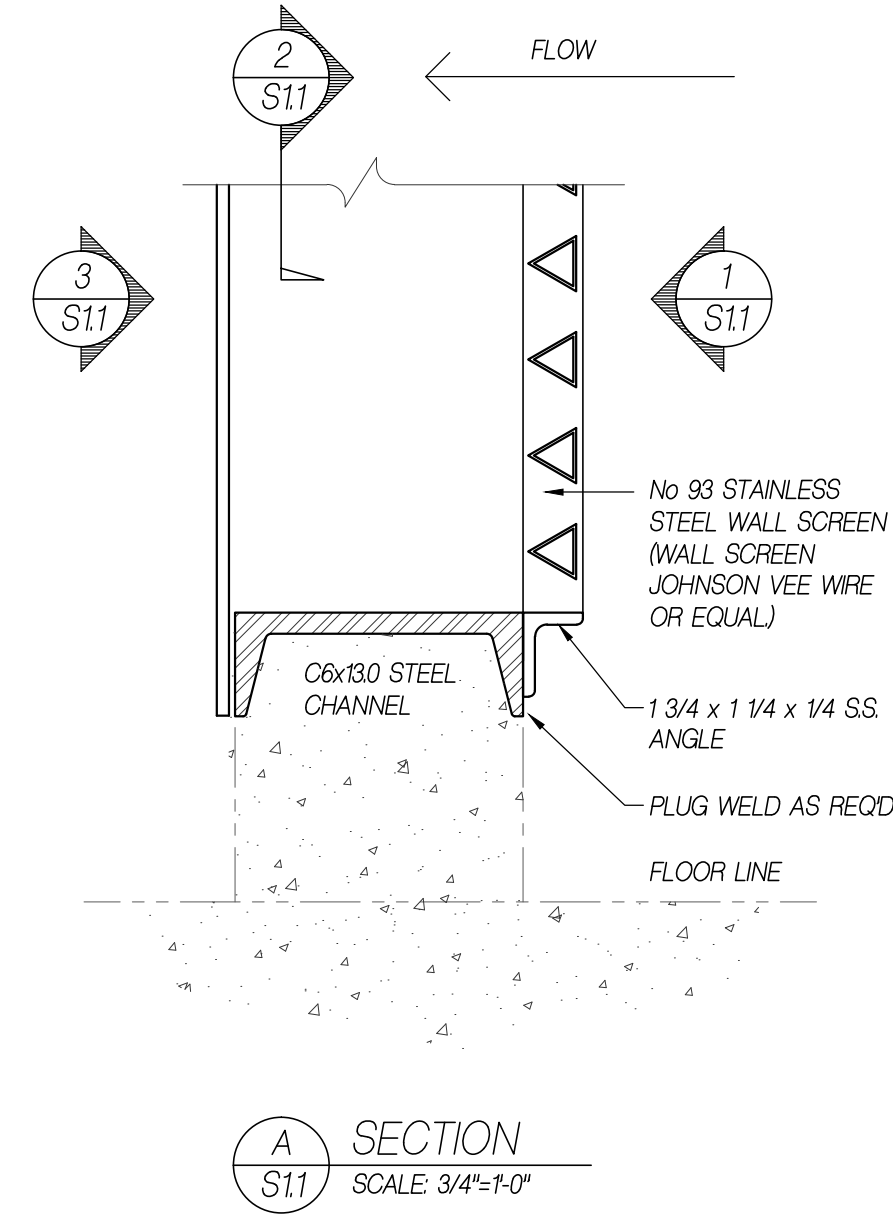
SHEET TITLE:
 COMPARK VILLAGE SOUTH
 WEST, EAST POND, TYPE D
 PARKER, COLORADO
 GS QUALITY WELDING LLC - 2021-56

Project Manager
 Abraham D. Solo / Cesar Solo
 Drawn by
 W.C.S.
 DATE:
 1/11/2021

SHEET NO.
S1.2

GS QUALITY WELDING LLC
 600 COUNTY ROAD 21
 BRIGHTON, COLORADO 80603
 720-626-8116

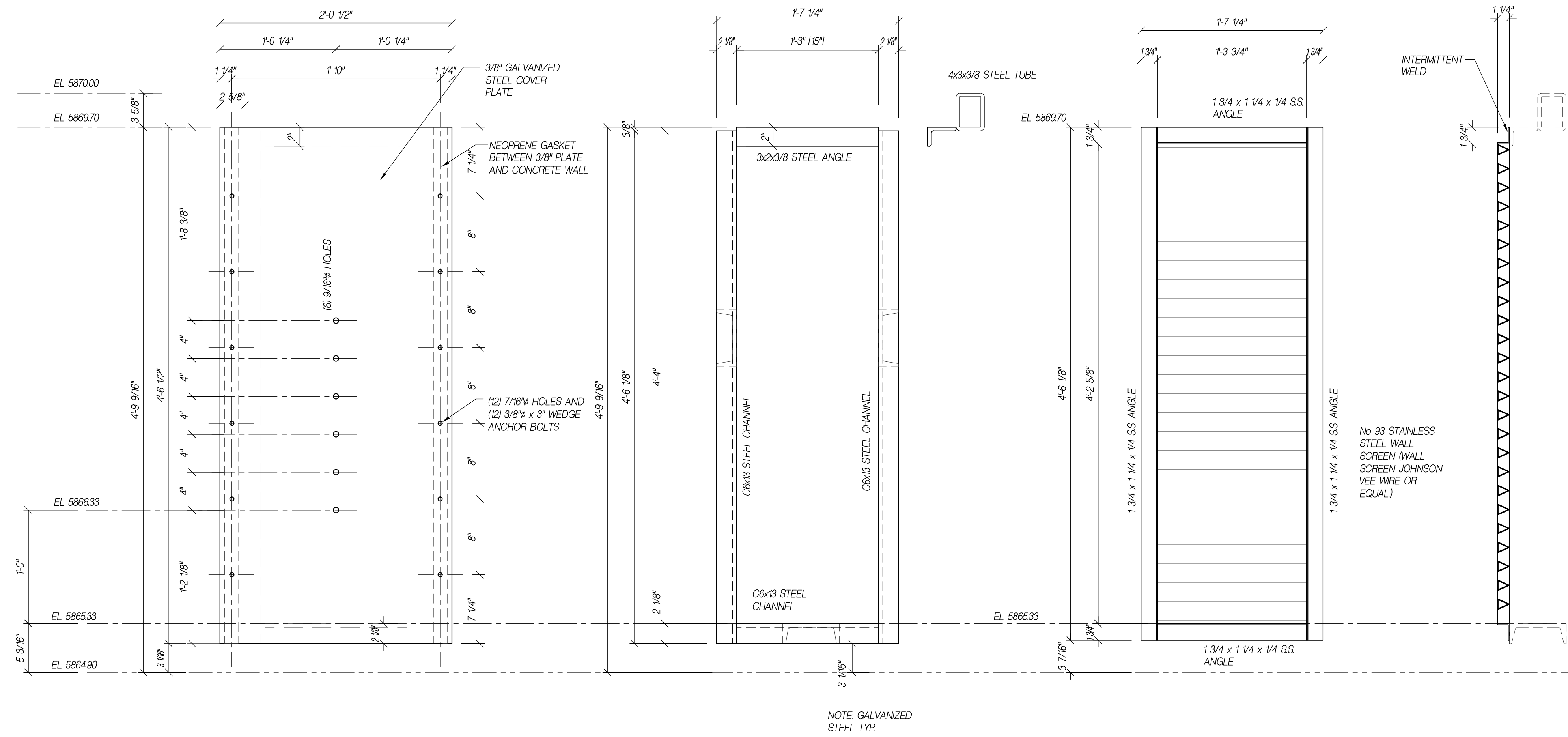
NOTE: FIELD VERIFY ALL DIMENSIONS BEFORE FABRICATION.



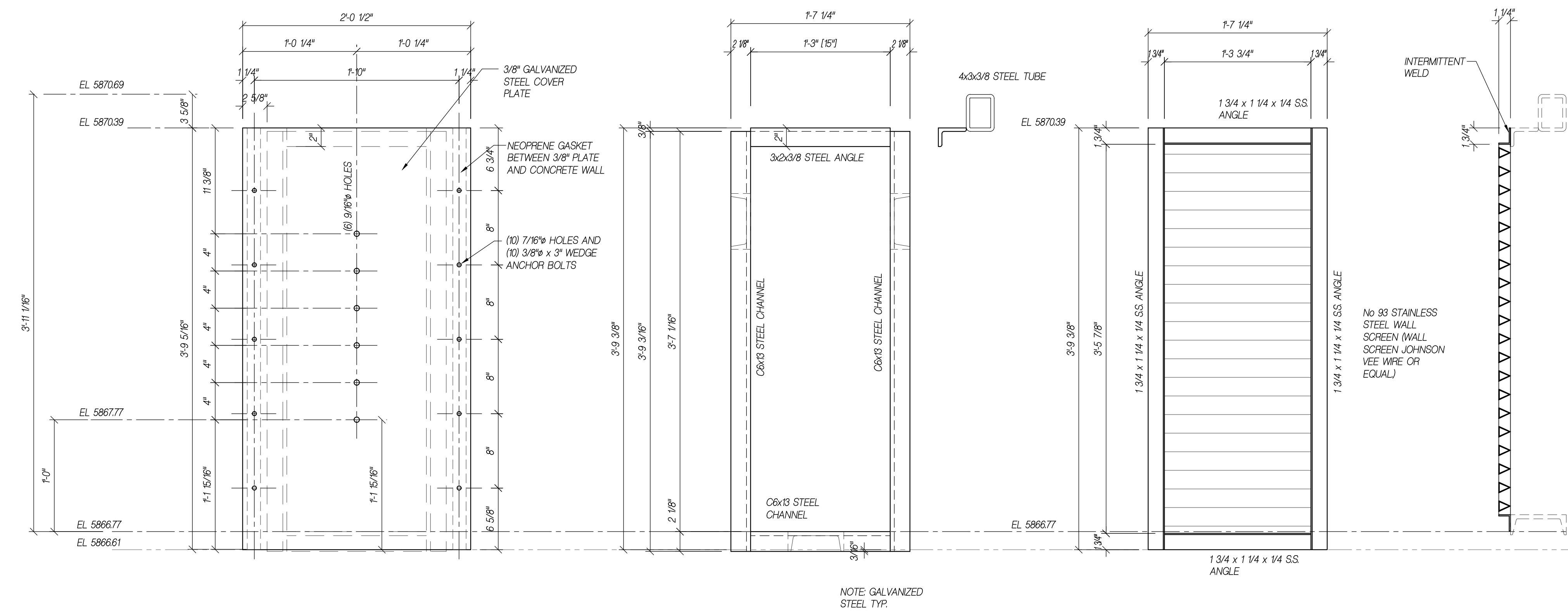
No Exception Taken
 Approved as Noted
 Rejected
 Revise and Resubmit

This review is only for general conformance with the design concept of the project and general compliance with the information given in the Contract Documents. Corrections or comments made on the submittal during this review do not relieve contractor from compliance with the requirements of the plans and specifications. Approval of a specific item shall not include approval of an assembly of which the item is a component. Contractor is responsible for: dimensions to be confirmed and correlated at the jobsite, information that pertains solely to the fabrication process or to the means, methods, techniques, sequences and procedures of construction; coordination of his or her Work with that of all other trades; and for performing all work in a safe and satisfactory manner.

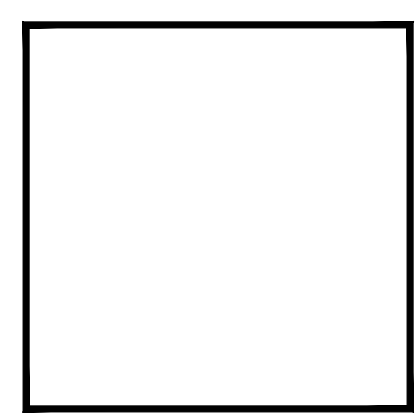
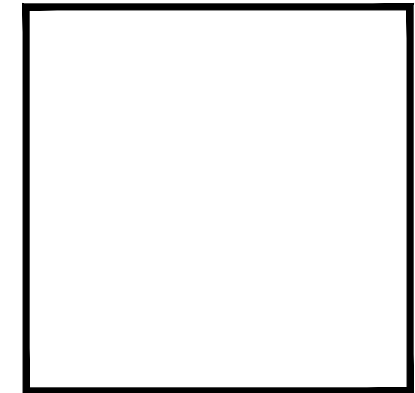
Manhard Consulting, Ltd.
 Date: 03/17/2021 By: Gary Iwata



6 ORIFICE PLATE ELEVATION
S11 SCALE: 1 1/2"=1'-0"
5 OUTLET ELEVATION (ONE REQ'D)
S11 SCALE: 1 1/2"=1'-0"
4 WATER QUALITY TRASH ELEVATION
S11 SCALE: 1 1/2"=1'-0"
 EAST POND FILTERS



3 ORIFICE PLATE ELEVATION
S11 SCALE: 1 1/2"=1'-0"
2 OUTLET ELEVATION (ONE REQ'D)
S11 SCALE: 1 1/2"=1'-0"
1 WATER QUALITY TRASH ELEVATION
S11 SCALE: 1 1/2"=1'-0"
 WEST POND FILTERS



GS QUALITY WELDING LLC
 600 COUNTY ROAD 21
 BRIGHTON, COLORADO 80603
 720-626-8116

No.	Revision/Issue	Date
1	ISSUED	1/11/2021
2	FOR APPROVAL	1/11/2021
3	REVISED	3/17/2021

SHEET TITLE:
 COMPARK VILLAGE SOUTH
 WEST, EAST POND, TYPE D
 PARKER, COLORADO
 GS QUALITY WELDING LLC - 2021-56

Project Manager
 Abraham D. Solo / Cesar Solo
Drawn by
 W.C.S.
DATE:
 1/11/2021

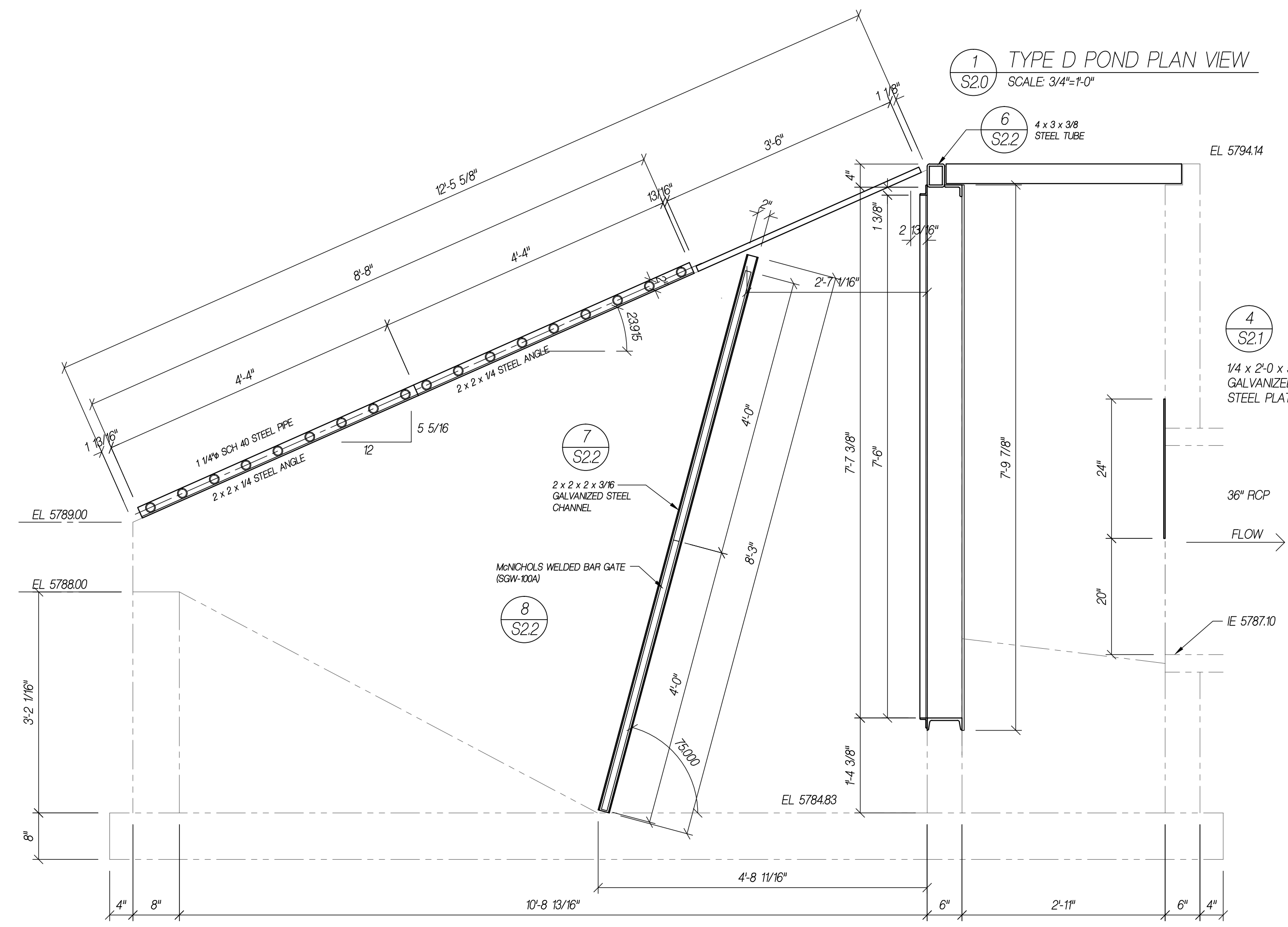
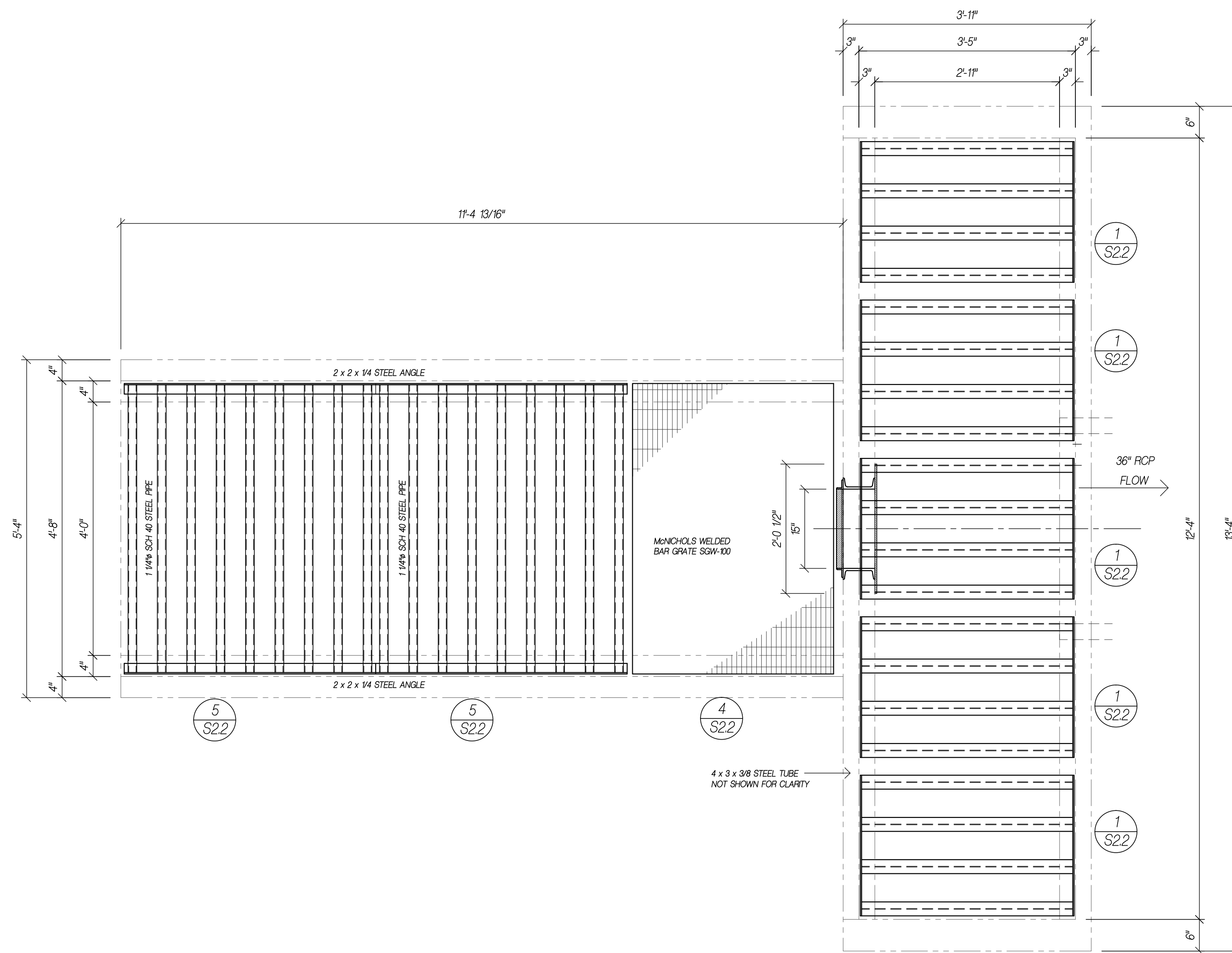
SHEET NO.
S1.1

NOTE: FIELD VERIFY ALL DIMENSIONS BEFORE FABRICATION.

LAST SAVE BY: Winton Schmitz
 SAVE DATE: 3/17/2021 10:53 AM
 PAPER SIZE: 24x36
 FILE NAME: C:\Users\WCS\Desktop\2021\COMPARK SOUTH\COMPARK SOUTH-S1.1.dwg
 PLOT DATE: 3/17/2021 11:00 AM
 FILE NAME: C:\Users\WCS\Desktop\2021\COMPARK SOUTH\COMPARK SOUTH-S1.1.dwg

LAST SAVE BY: Weston Schultz
DATE: 1/11/2021 11:31 PM

PLOT DATE: 3/10/2021 11:00 AM
FILE NAME: C:\WORK\2021\COMPASS SOUTH\COMPASS SOUTH.S2016



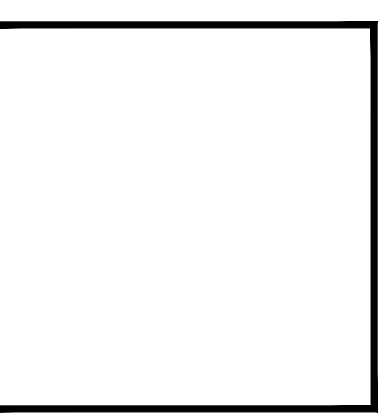
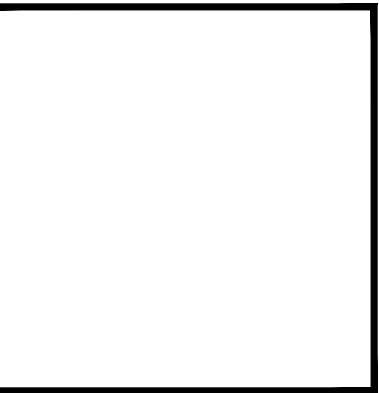
2 TYPE D POND ELEVATION
SCALE: 3/4"=1'-0"

NOTE: FIELD VERIFY ALL DIMENSIONS BEFORE FABRICATION.

No Exception Taken
 Approved as Noted
 Rejected
 Revise and Resubmit

This review is only for general conformance with the design concept of the project and general compliance with the information given in the Contract Documents. Corrections or comments made on the submittal during this review do not relieve contractor from compliance with the requirements of the plans and specifications. Approval of a specific item shall not include approval of an assembly of which the item is a component. Contractor is responsible for: dimensions to be confirmed and correlated at the jobsite, information that pertains solely to the fabrication process or to the means, methods, techniques, sequences and procedures of construction; coordination of his or her Work with that of all other trades; and for performing all work in a safe and satisfactory manner.

Manhard Consulting, Ltd.
 Date: 03/17/2021 By: Gary Iwata



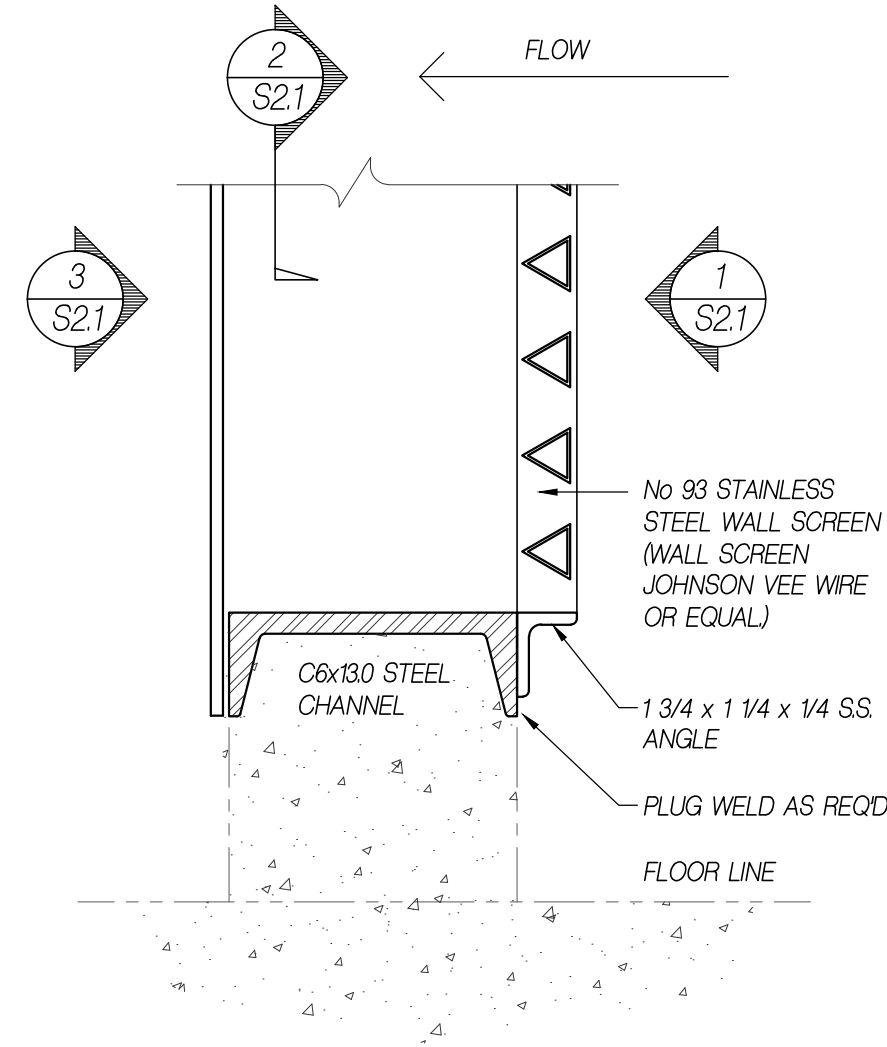
GS QUALITY WELDING LLC
 600 COUNTY ROAD 21
 BRIGHTON, COLORADO 80603
 720-626-8116

No.	Revision/Issue	Date
1	TYPE APPROVAL	1/11/2021
2	REVISED	1/11/2021
3	REVISED	3/10/2021

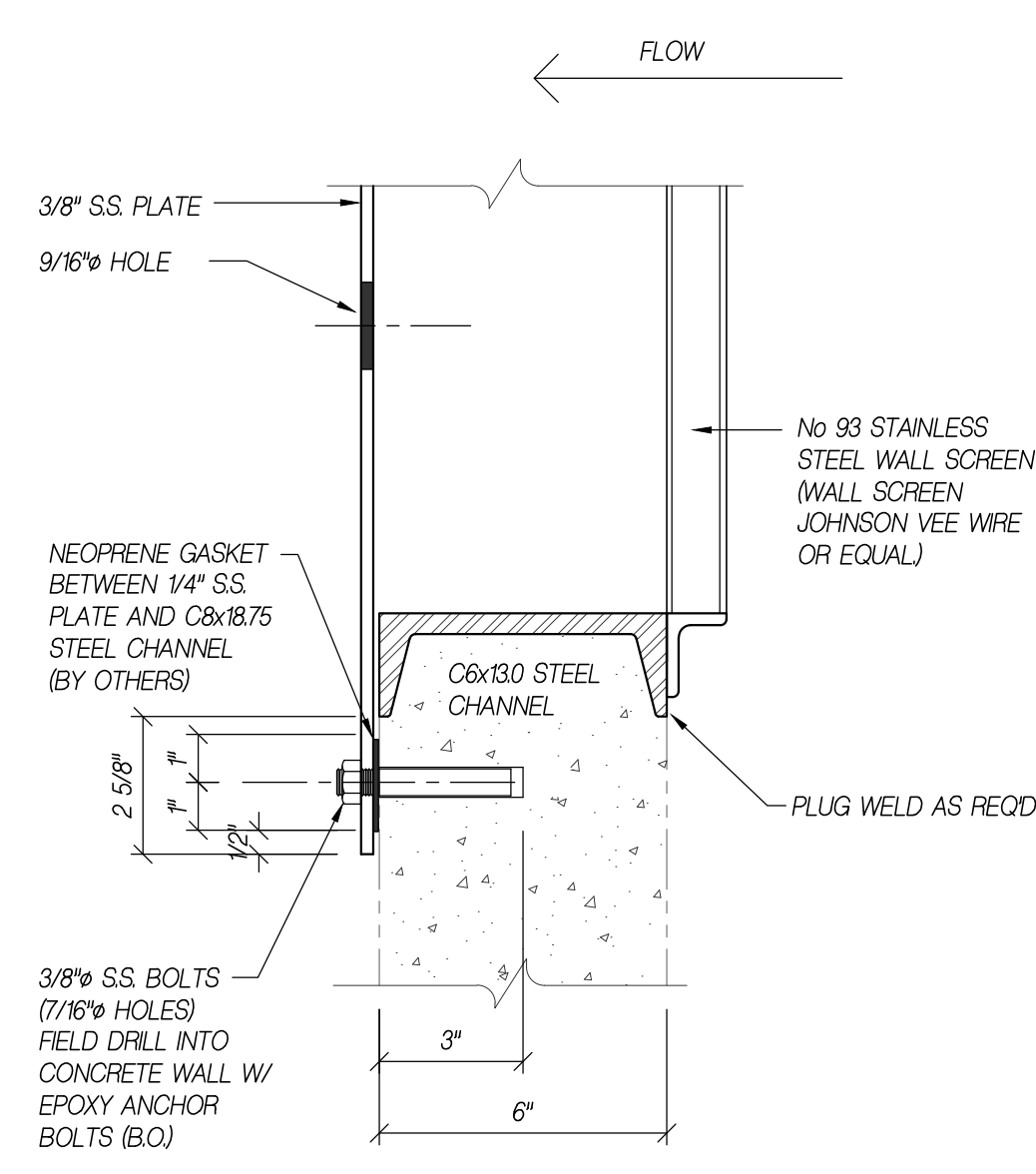
SHEET TITLE:
 COMPASS VILLAGE SOUTH
 WEST, EAST POND, TYPE D
 PARKER, COLORADO
 GS QUALITY WELDING LLC - 2021-56

Project Manager
 Abraham D Solo / Cesar Solo
Drawn by
 W.C.S.
DATE:
 1/11/2021

SHEET NO.
S2.0



A SECTION
S21
SCALE 3/4"=1'-0"

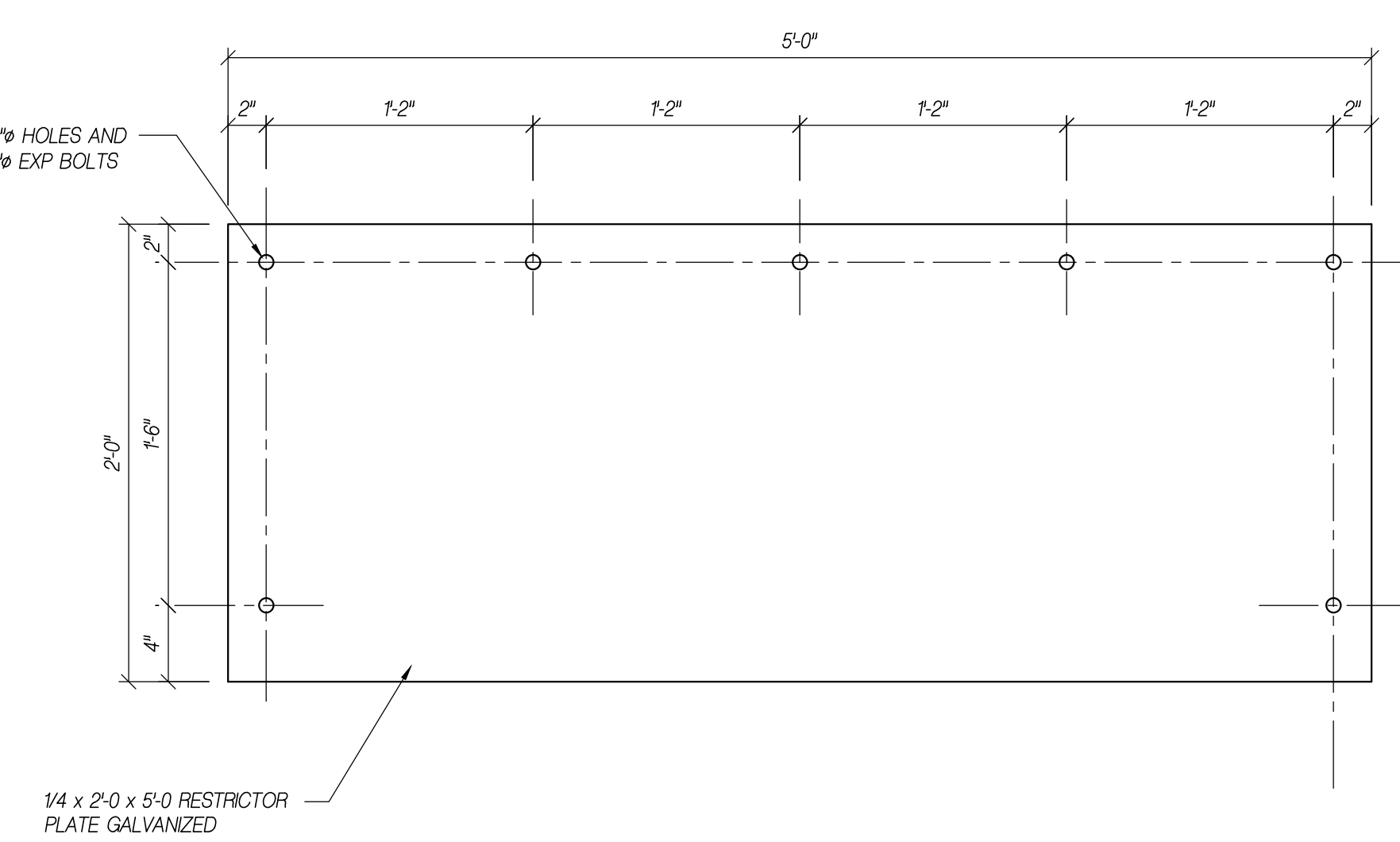


B SECTION
S21
SCALE 3/4"=1'-0"

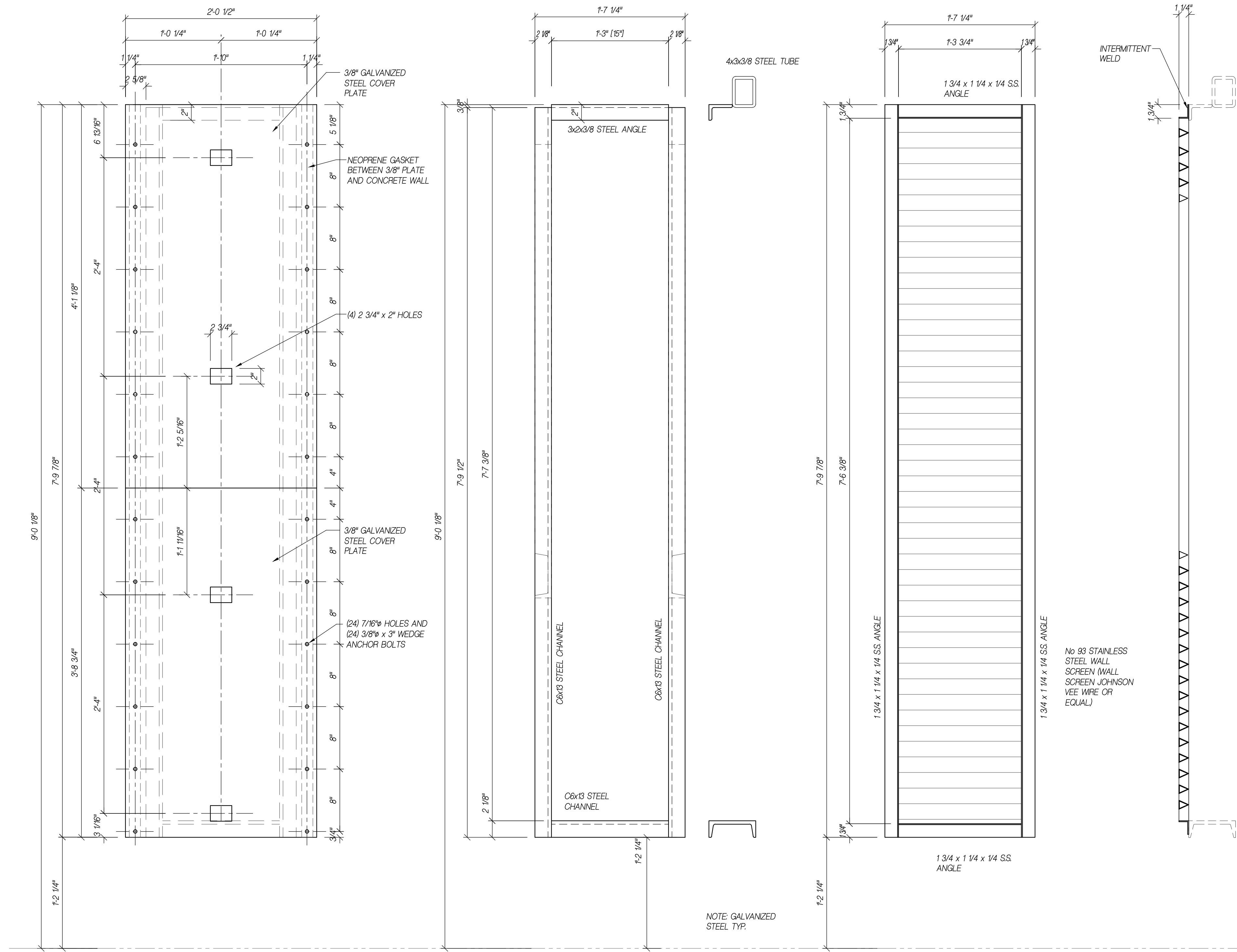
No Exception Taken
 Approved as Noted
 Rejected
 Revise and Resubmit

This review is only for general conformance with the design concept of the project and general compliance with the information given in the Contract Documents. Corrections or comments made on the submittal during this review do not relieve contractor from compliance with the requirements of the plans and specifications. Approval of a specific item shall not include approval of an assembly of which the item is a component. Contractor is responsible for: dimensions to be confirmed and correlated at the jobsite, information that pertains solely to the fabrication process or to the means, methods, techniques, sequences and procedures of construction; coordination of his or her Work with that of all other trades; and for performing all work in a safe and satisfactory manner.

Manhard Consulting, Ltd.
 Date: 03/17/2021 By: Gary Iwata



4 RESTRICTOR PLATE ELEVATION (ONE REQD)
S21
SCALE 1 1/2"=1'-0"



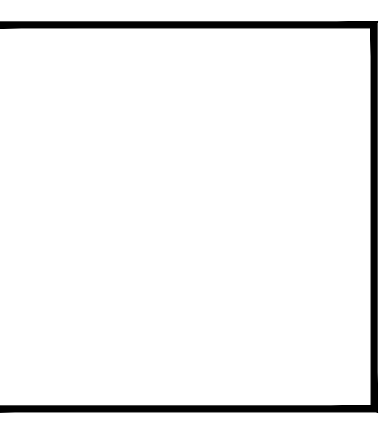
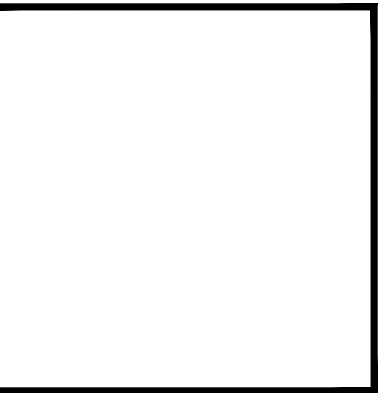
3 ORIFICE PLATE ELEVATION
S21
SCALE 1 1/2"=1'-0"

2 OUTLET ELEVATION (ONE REQD)
S21
SCALE 1 1/2"=1'-0"

1 WATER QUALITY TRASH ELEVATION
S21
SCALE 1 1/2"=1'-0"

NOTE: FIELD VERIFY ALL DIMENSIONS BEFORE FABRICATION.

LAST SAVE BY: Weston Schultz
 SAVE DATE: 1/17/2021 1:38 PM
 PAPER SIZE: 24x36
 FILE NAME: C:\Users\WESLTON\OneDrive\Documents\2021\2021-03-17\2021-03-17.dwg



GS QUALITY WELDING LLC
 600 COUNTY ROAD 21
 BRIGHTON, COLORADO 80603
 720-626-8116

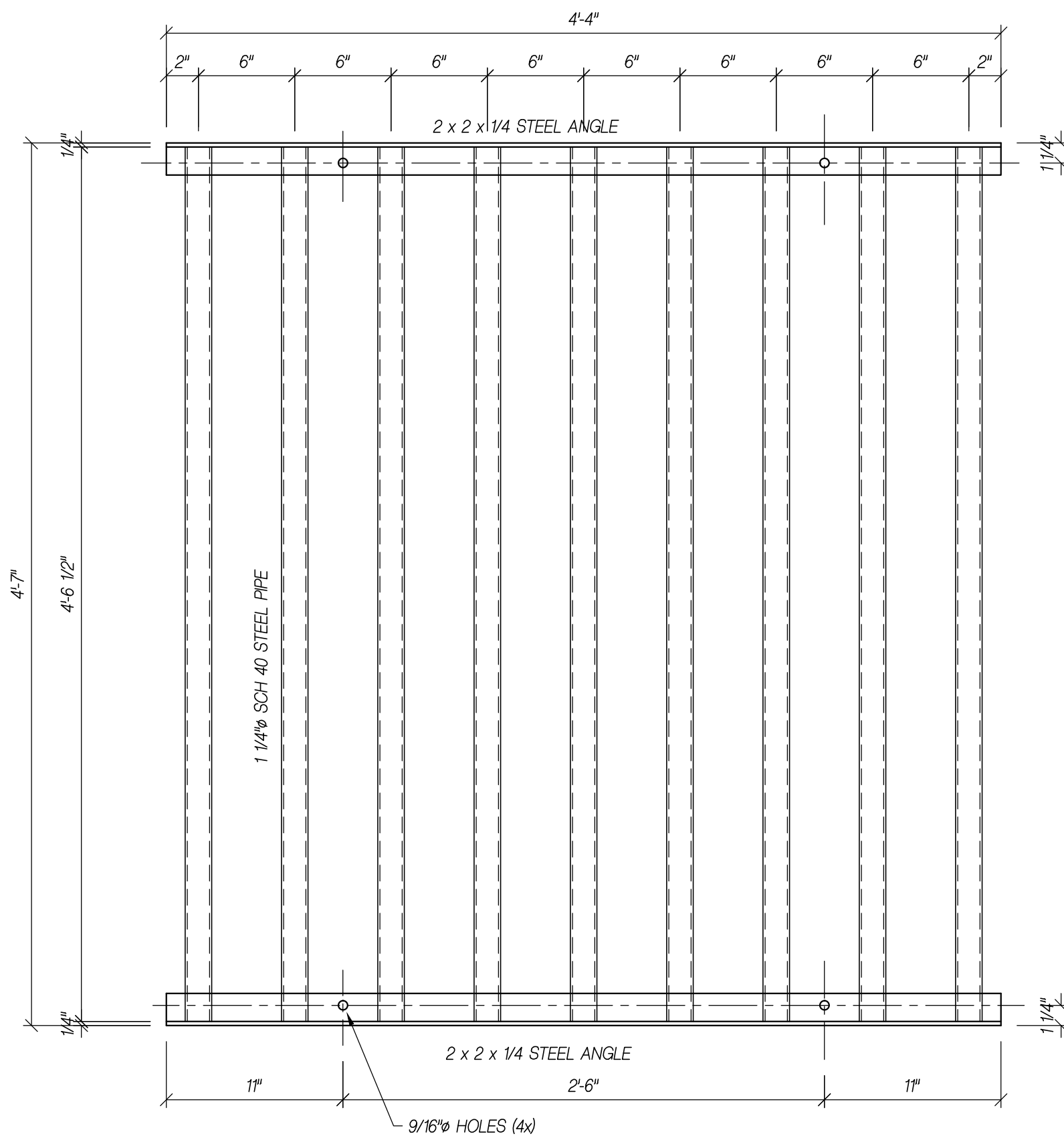
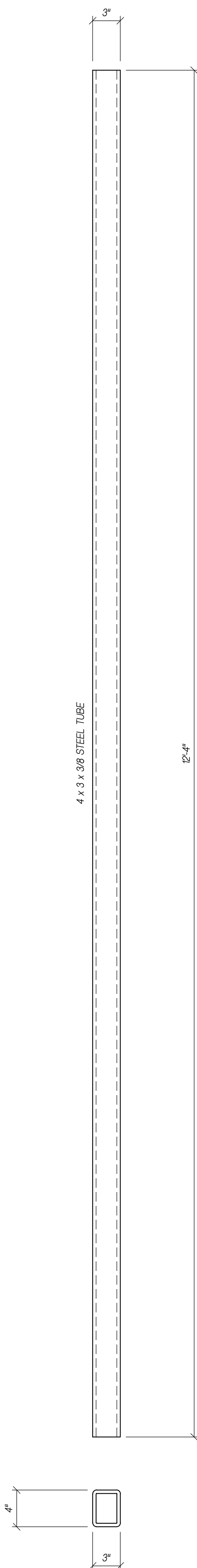
No.	Revision/Issue	Date
1	TYPE APPROVAL	1/11/2021
2	REVISED	1/11/2021
3	REVISED	3/10/2021

SHEET TITLE:
 COMPARK VILLAGE SOUTH
 WEST, EAST POND, TYPE D
 PARKER, COLORADO
 GS QUALITY WELDING LLC - 2021-56

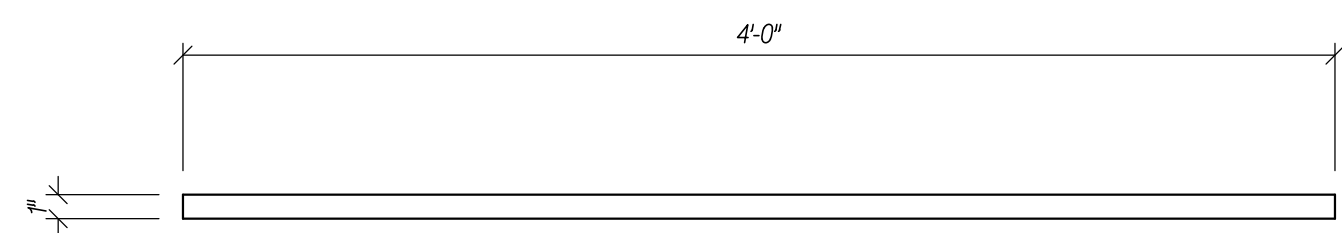
Project Manager
 Abraham D Solo / Cesar Solo
Drawn by
 W.C.S.
DATE:
 1/11/2021

SHEET NO.
S2.1

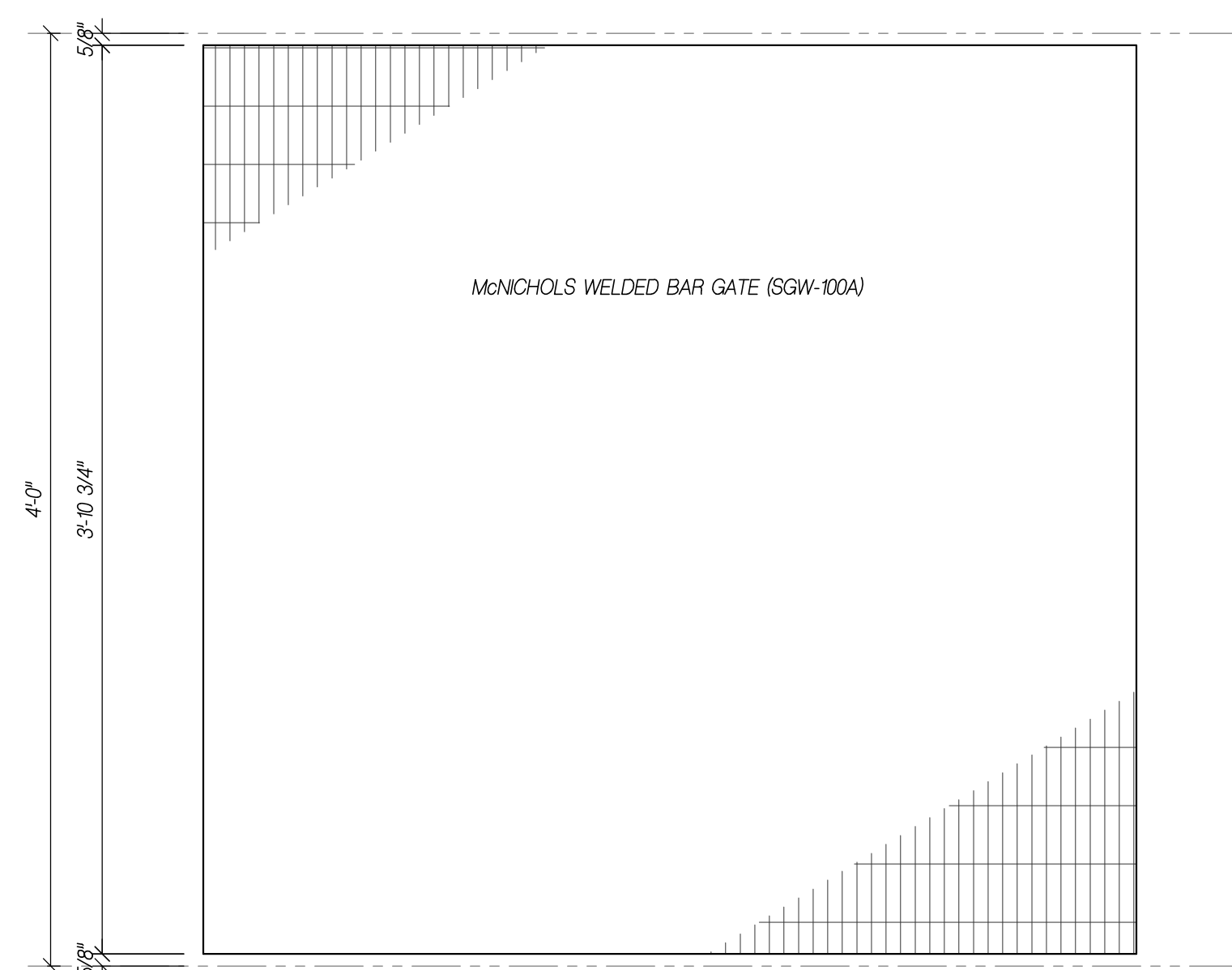
LAST DATE: 3/10/2021 11:00 AM
 FILE NAME: C:\Users\GARY\OneDrive\Documents\COMPASS\2021\21021\21021.dwg
 PAPER SIZE: 24x36
 DATE: 1/11/2021 1:38 PM



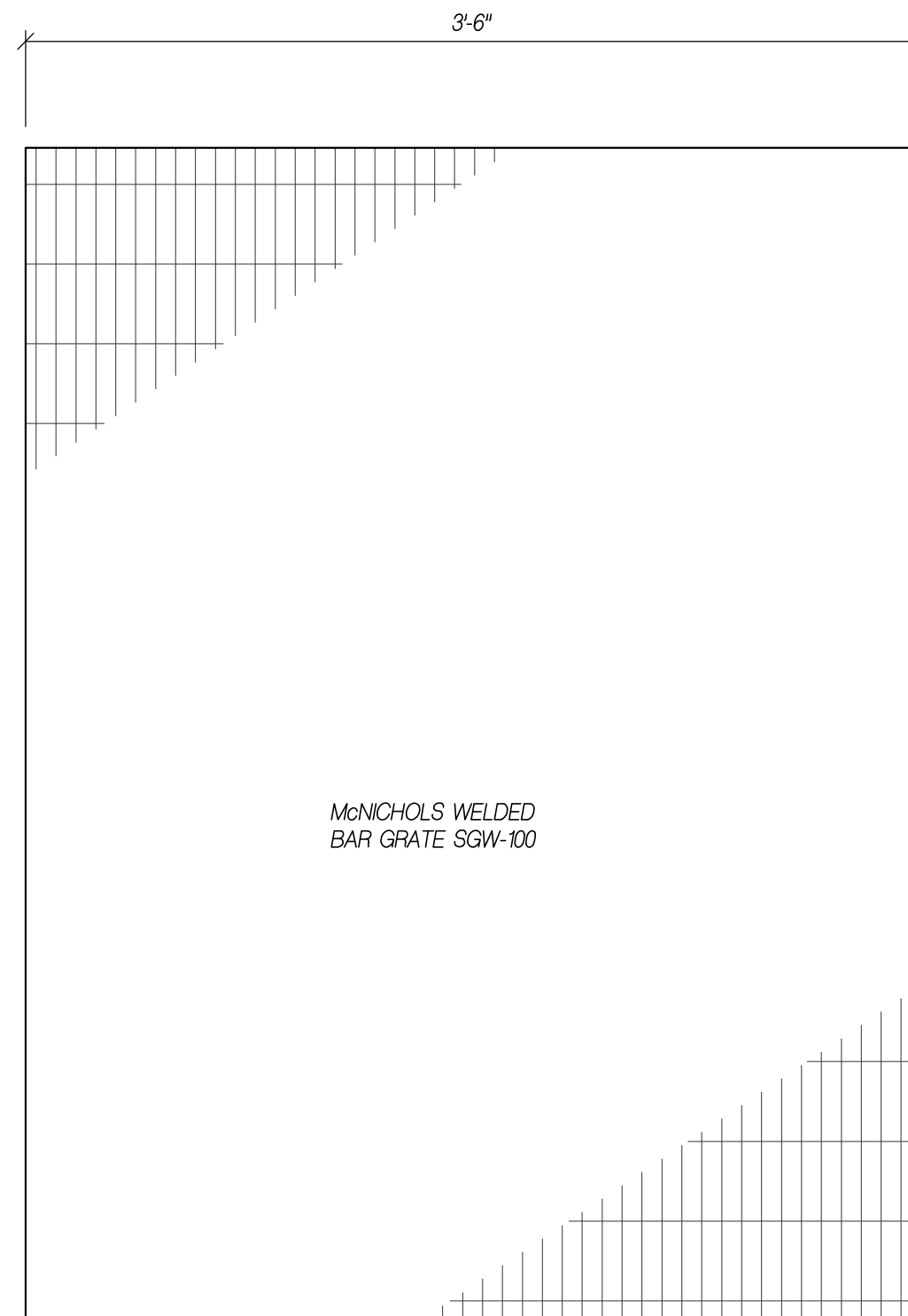
5 GRATING RACK PLAN (2 REQ'D)
 S2.2 SCALE: 1 1/2"=1'-0"



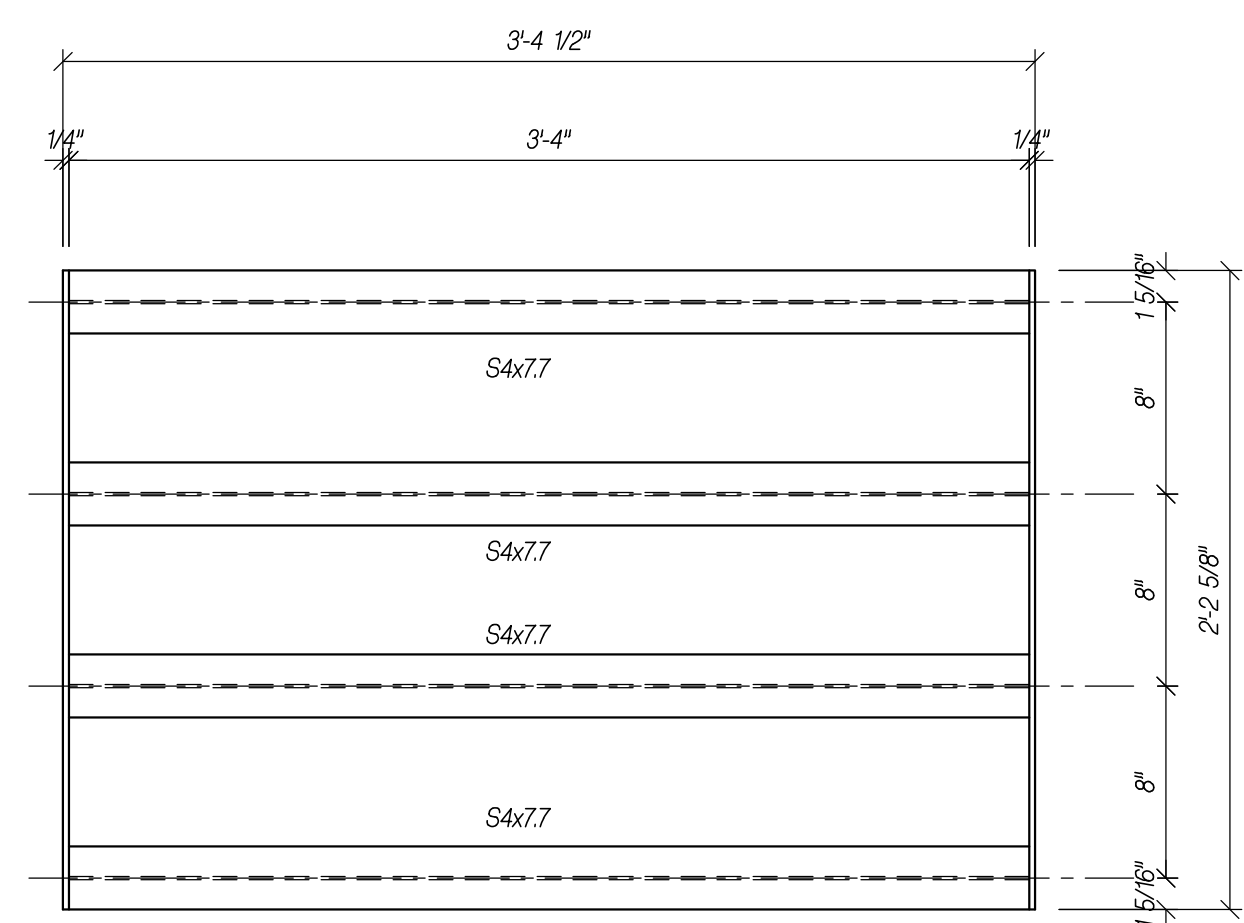
3 SUPPORT CHANNEL (ONE REQ'D)
 S2.2 SCALE: 1 1/2"=1'-0"



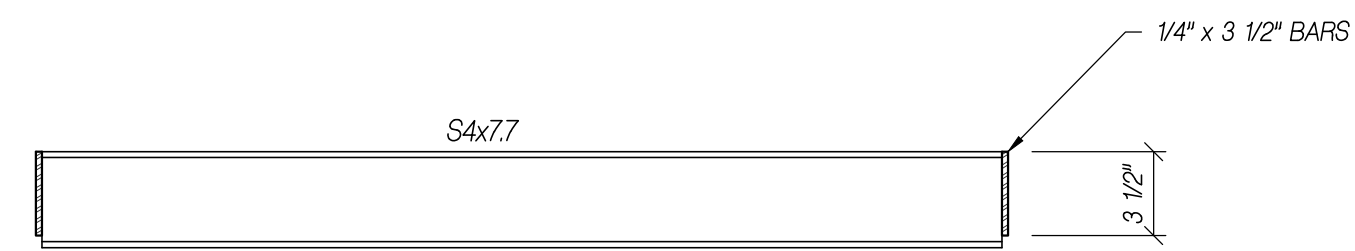
8 BAR GATE (2 REQ'D)
 S2.2 SCALE: 1 1/2"=1'-0"



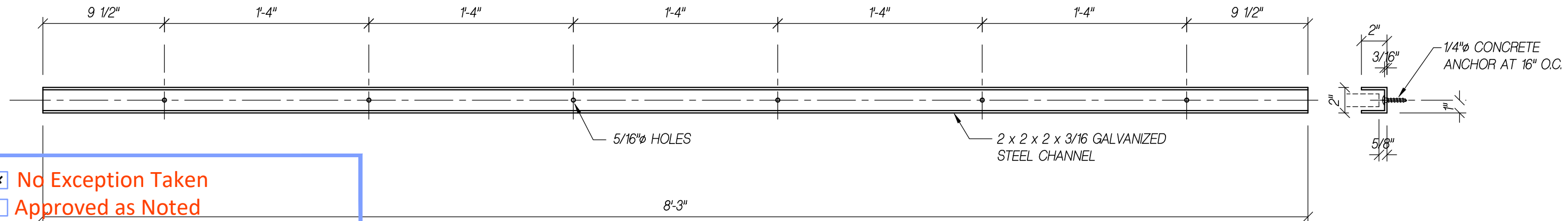
4 GRATING RACK PLAN (ONE REQ'D)
 S2.2 SCALE: 1 1/2"=1'-0"



1 GRATING RACK PLAN (5 REQ'D)
 S2.2 SCALE: 1 1/2"=1'-0"



2 GRATING RACK ELEVATION
 S2.2 SCALE: 1 1/2"=1'-0"



7 CHANNEL (2 REQ'D)
 S2.2 SCALE: 1 1/2"=1'-0"

No Exception Taken
 Approved as Noted
 Rejected
 Revise and Resubmit

This review is only for general conformance with the design concept of the project and general compliance with the information given in the Contract Documents. Corrections or comments made on the submittal during this review do not relieve contractor from compliance with the requirements of the plans and specifications. Approval of a specific item shall not include approval of an assembly of which the item is a component. Contractor is responsible for: dimensions to be confirmed and correlated at the jobsite, information that pertains solely to the fabrication process or to the means, methods, techniques, sequences and procedures of construction; coordination of his or her Work with that of all other trades; and for performing all work in a safe and satisfactory manner.

Manhard Consulting, Ltd.
 Date: 03/17/2021 By: Gary Iwata

GS QUALITY WELDING LLC
 600 COUNTY ROAD 21
 BRIGHTON, COLORADO 80603
 720-626-8116

No.	Revision/Issue	Date
1	TYPE APPROVAL	1/11/2021
2	REVISED	1/11/2021
3	REVISED	3/10/2021

SHEET TITLE:
 COMPARK VILLAGE SOUTH
 WEST, EAST POND, TYPE D
 PARKER, COLORADO
 GS QUALITY WELDING LLC - 2021-56

Project Manager
 Abraham D Solo / Cesar Solo
Drawn by
 W.C.S.
DATE:
 1/11/2021

SHEET NO.
S2.2

NOTE: FIELD VERIFY ALL DIMENSIONS BEFORE FABRICATION.