

COMPARK VILLAGE SOUTH

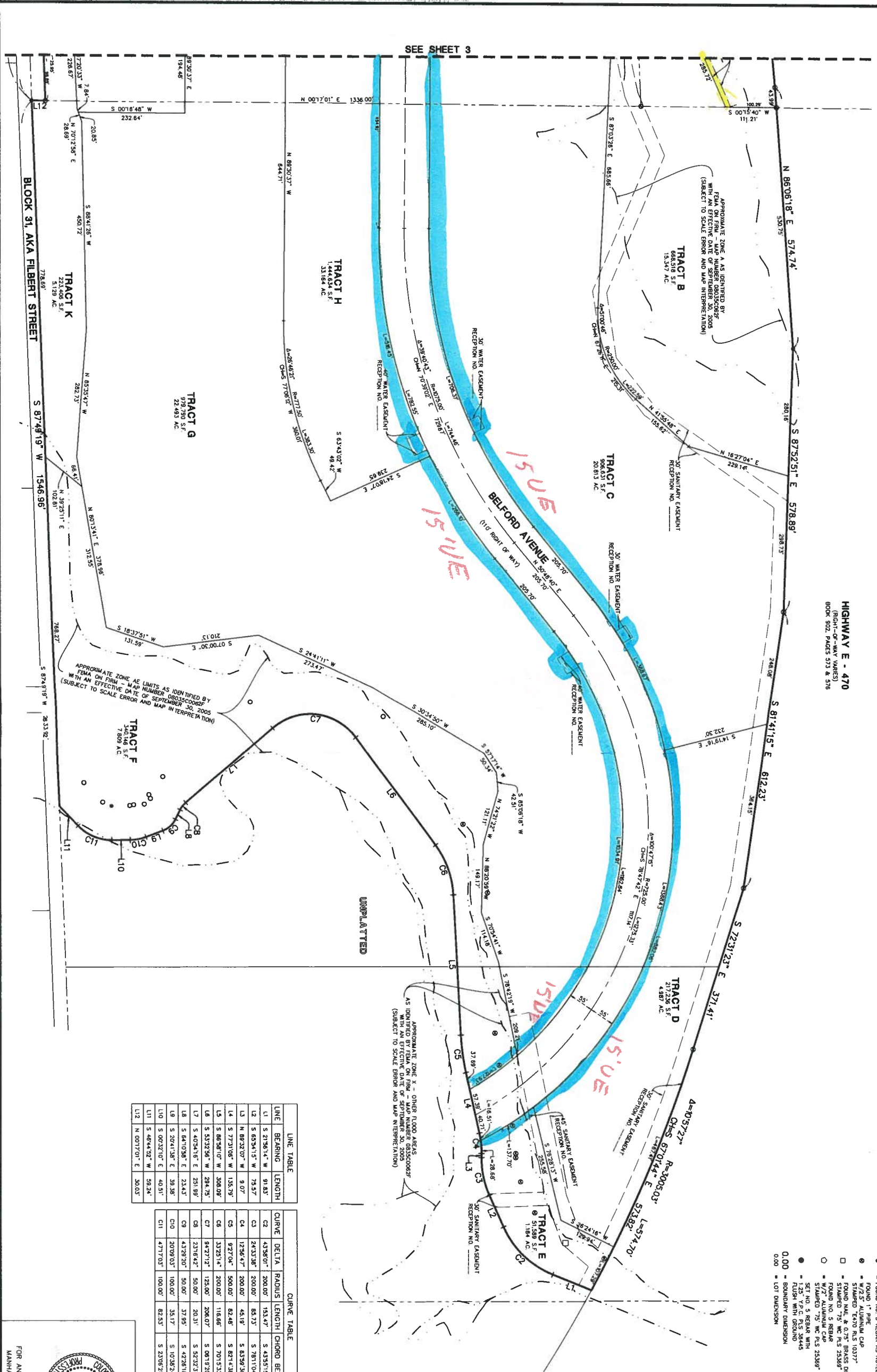
MINOR DEVELOPMENT PLAT

PLANNING AREAS 13-18 (COMPARK VILLAGE PD - FOURTH AMENDMENT)
 PART OF THE SOUTH HALF OF SECTION 6, TOWNSHIP 6 SOUTH, RANGE 66 WEST OF THE SIXTH PRINCIPAL MERIDIAN,
 TOWN OF PARKER, COUNTY OF DOUGLAS, STATE OF COLORADO
 11 TRACTS - 150.119 ACRES

HIGHWAY E - 470
 (RIGHT-OF-WAY VARIES)
 BOOK 302, PAGES 573 & 576



- LEGEND
- EX. PROPERTY LINE
 - EX. SECTION LINE
 - EX. LOT LINE
 - EX. FLOOD ZONE LIMITS
 - SECTION CORNER
 - SECTION CORNER
 - FOUND 1" PIPE
 - FOUND 4" PIPE
 - FOUND NAIL & 0.25" BRASS DISC
 - STAMPED "75" MC P.S. 2338"
 - FOUND NO. 5 REBAR
 - FOUND NO. 5 REBAR
 - FOUND 7/8" MC P.S. 2338"
 - FOUND 1/2" P.C. P.S. 3844"
 - FOUND 1/2" P.C. P.S. 3844"
 - FLUSH WITH GROUND
 - BOUNDARY DIMENSION
 - 0.00
 - LOT DIMENSION



LINE TABLE		CURVE TABLE	
LINE	BEARING / LENGTH	CURVE	DELTA / RADIUS / LENGTH / CHORD BEARING / CHORD
L1	S 2136.14° W 91.83'	C2	4338.01° 200.00' 143.47' S 4335.15° W 148.74'
L2	S 6534.15° W 79.57'	C3	2433.38° 200.00' 85.75' S 7811.04° W 85.08'
L3	N 8832.07° W 9.07'	C4	1236.47° 200.00' 45.19' S 8359.50° W 45.10'
L4	S 7731.06° W 135.79'	C5	9271.04° 500.00' 82.48' S 8214.38° W 82.38'
L5	S 8858.10° W 308.09'	C6	3323.14° 200.00' 118.88' S 7015.33° W 118.01'
L6	S 5332.96° W 284.75'	C7	9427.12° 125.00' 206.07' S 0819.20° W 183.51'
L7	S 4054.16° E 291.89'	C8	2316.42° 50.00' 20.31' S 5232.37° E 20.17'
L8	S 6410.98° E 23.43'	C9	4328.20° 50.00' 37.95' S 4328.18° E 37.05'
L9	S 2041.38° E 38.38'	C10	2009.03° 100.00' 35.17' S 1038.24° E 34.89'
L10	S 0032.07° E 40.51'	C11	4717.03° 100.00' 82.25' S 2308.21° W 80.20'
L11	S 4844.92° W 59.24'		
L12	N 0017.01° E 30.03'		



FOR AND ON BEHALF OF
 MANHARD CONSULTING

DATE: 11/28/13
 SCALE: 1" = 100'

4 OF 4
 00C0PKC3.03

COMPARK VILLAGE SOUTH
 TOWN OF PARKER, COUNTY OF DOUGLAS, COLORADO
 MINOR DEVELOPMENT PLAT

Manhard CONSULTING LTD.
 8008 E. Arapahoe Court, Suite 110, Centennial, CO 80112 ph:303.708.0500 fax:303.708.0400 manhard.com
 Civil Engineers • Surveyors • Water Resources Engineers • Water & Wastewater Engineers
 Construction Managers • Environmental Scientists • Landscape Architects • Planners

DATE	REVISIONS	DRAWN BY