



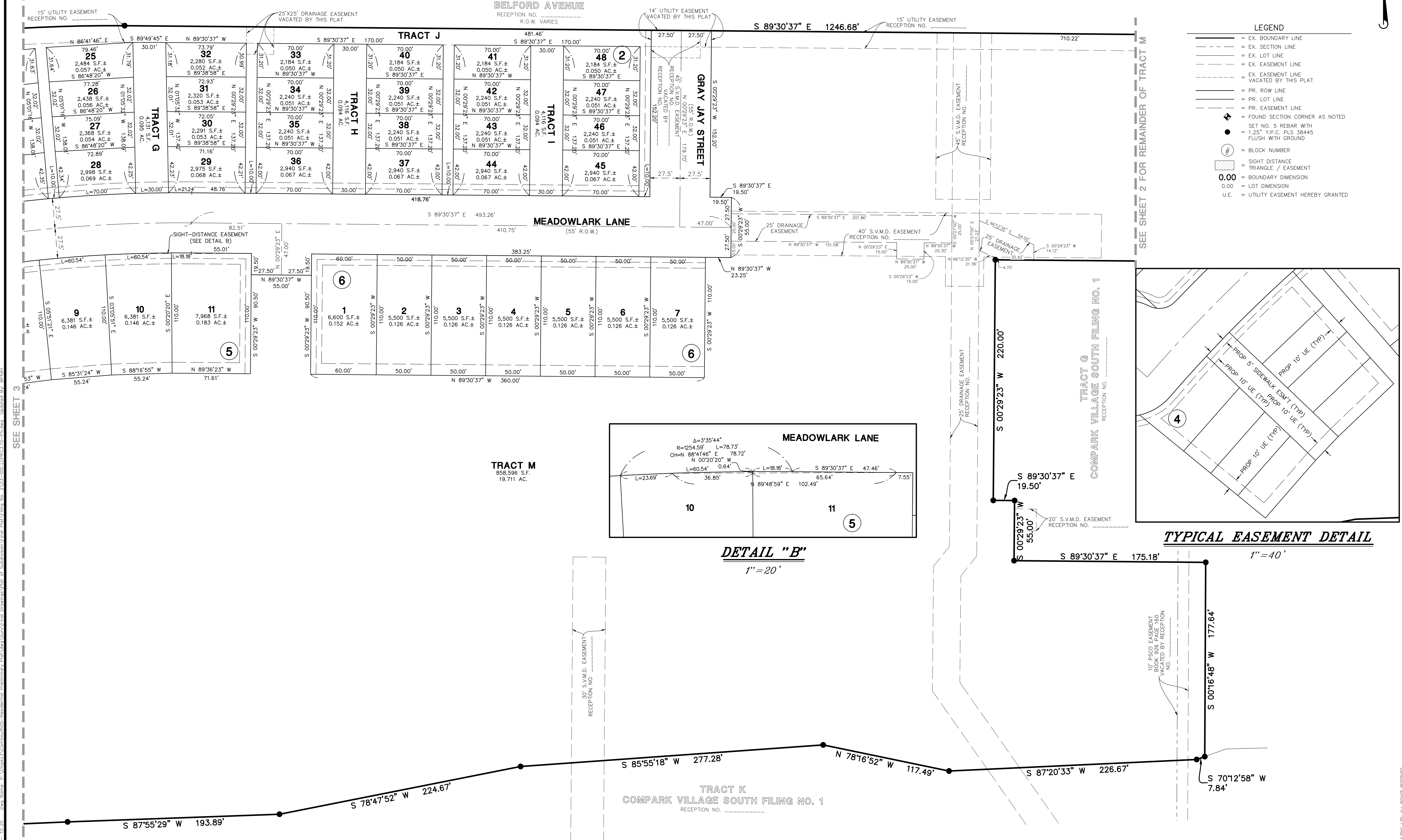
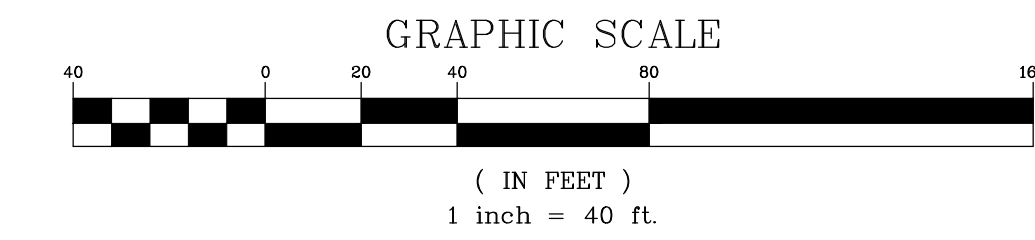




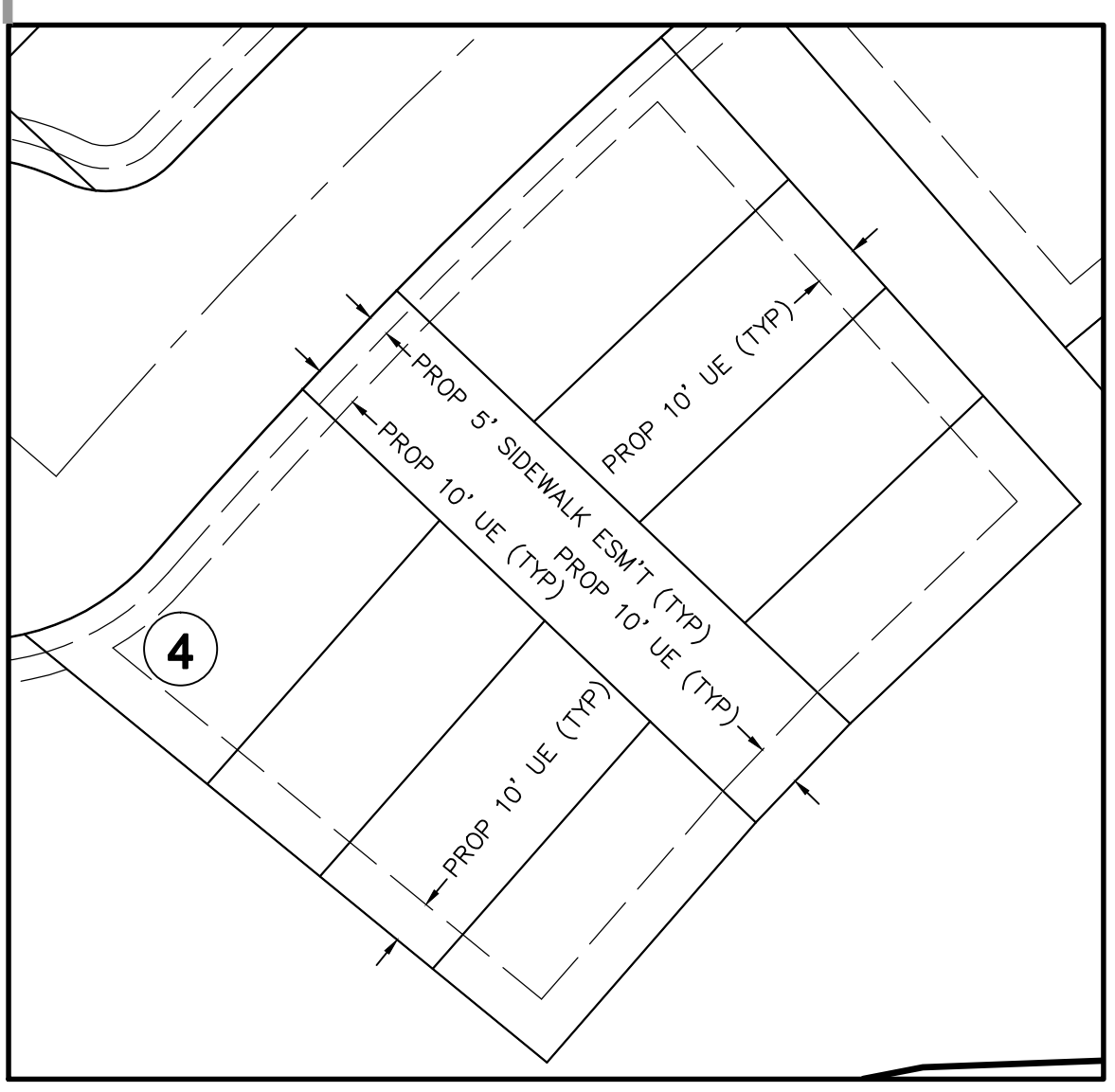
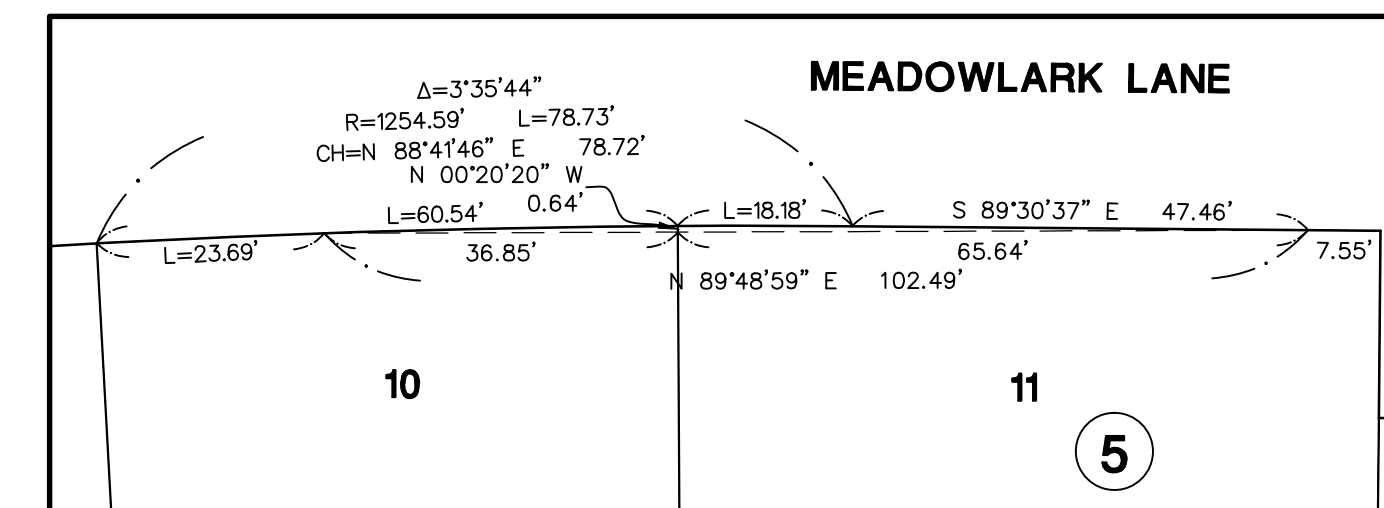
# COMPARK VILLAGE SOUTH FILING NO. 2

## PLANNING AREAS 17 & 18 (COMPARK VILLAGE PD – FOURTH AMENDMENT)

A REPLAT OF TRACT H, COMPARK VILLAGE SOUTH FILING NO. 1  
 LOCATED IN THE SOUTH HALF OF SECTION 6, TOWNSHIP 6 SOUTH, RANGE 66 WEST OF THE SIXTH PRINCIPAL MERIDIAN,  
 TOWN OF PARKER, COUNTY OF DOUGLAS, STATE OF COLORADO.  
 93 LOTS, 13 TRACTS, 32.872 ACRES



- LEGEND**
- EX. BOUNDARY LINE
  - - - EX. SECTION LINE
  - - - EX. LOT LINE
  - - - EX. EASEMENT LINE
  - - - EX. EASEMENT LINE VACATED BY THIS PLAT
  - PR. ROW LINE
  - - - PR. LOT LINE
  - - - PR. EASEMENT LINE
  - ◆ FOUND SECTION CORNER AS NOTED
  - SET NO. 5 REBAR WITH 1.25" Y.P.C. PLS 38445 FLUSH WITH GROUND
  - # BLOCK NUMBER
  - ▨ SIGHT DISTANCE TRIANGLE / EASEMENT
  - 0.00 BOUNDARY DIMENSION
  - 0.00 LOT DIMENSION
  - U.E. UTILITY EASEMENT HEREBY GRANTED



SEE SHEET 3

SEE SHEET 2 FOR REMAINDER OF TRACT M

NO.	DATE	REVISIONS

**Manhard CONSULTING LTD.**  
 1800 E. Hampden Street, Suite 100, Aurora, CO 80012  
 303.733.8888  
 Civil Engineers • Surveyors • Water Resource Engineers • Wetland & Wetland Assessment • Environmental Scientists • Landscape Architects • Planners

COMPARK VILLAGE SOUTH FILING NO. 2  
 TOWN OF PARKER, COUNTY OF DOUGLAS, COLORADO  
 FINAL PLAT

PROJ. MGR.: JMR  
 PROJ. ASSOC.: BJP  
 DRAWN BY: GDP  
 DATE: 09/22/16  
 SCALE: 1" = 40'

SHEET  
**4** OF **4**  
 OOC.LCPK3.10

September 23, 2016 10:20 Data Name: P:\Cpck3\3\ComparkSouth05-Residential Preliminary Plat\Map\Drawings\Final\Plat\Filing No. 2\OOC.LCPK3.10-PS.dwg. Updated By: BJP