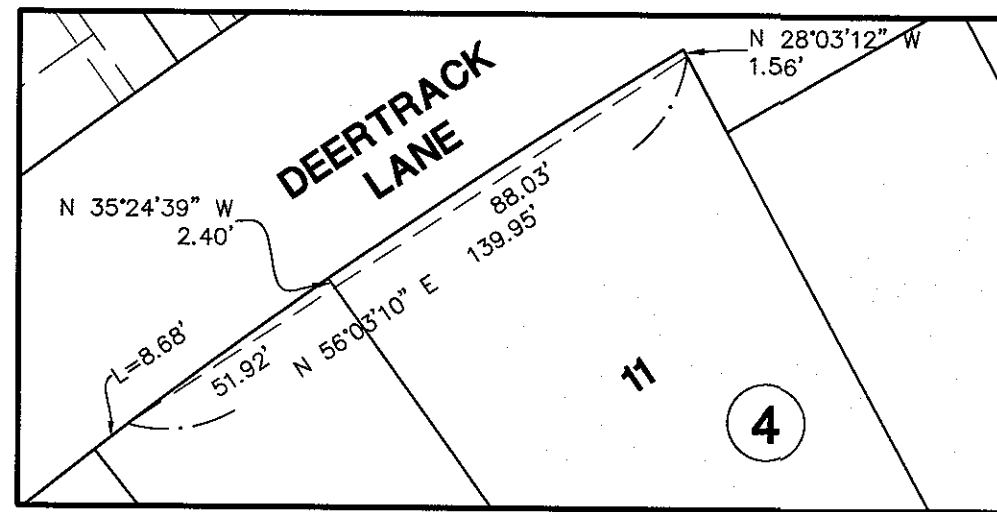






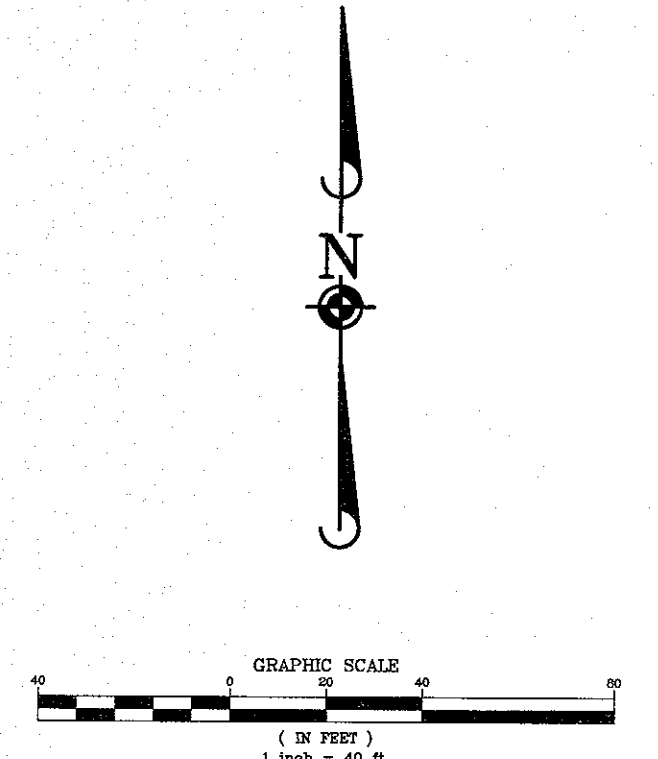
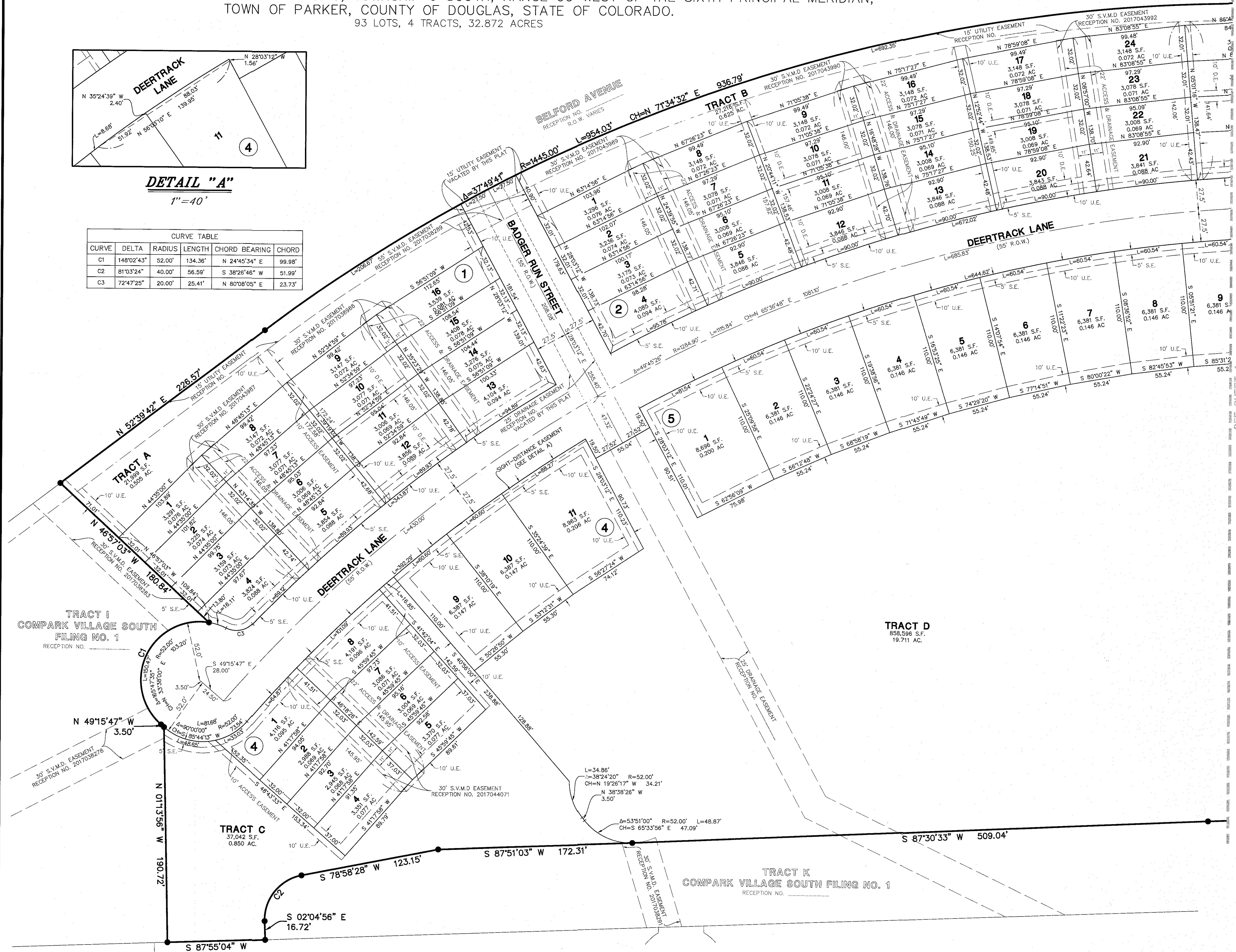
# COMPARK VILLAGE SOUTH FILING NO. 2

A REPLAT OF TRACT H, COMPARK VILLAGE SOUTH FILING NO. 1  
 LOCATED IN THE SOUTH HALF OF SECTION 6, TOWNSHIP 6 SOUTH, RANGE 66 WEST OF THE SIXTH PRINCIPAL MERIDIAN,  
 TOWN OF PARKER, COUNTY OF DOUGLAS, STATE OF COLORADO.  
 93 LOTS, 4 TRACTS, 32.872 ACRES



**DETAIL "A"**  
 1"=40'

CURVE TABLE					
CURVE	DELTA	RADIUS	LENGTH	CHORD BEARING	CHORD
C1	148°02'43"	52.00'	134.36'	N 24°45'34" E	99.98'
C2	81°03'24"	40.00'	56.59'	S 38°26'46" W	51.99'
C3	72°47'25"	20.00'	25.41'	N 80°08'05" E	23.73'



- LEGEND**
- EX. BOUNDARY LINE
  - EX. SECTION LINE
  - EX. LOT LINE
  - EX. EASEMENT LINE
  - EX. EASEMENT LINE VACATED BY THIS PLAT
  - PR. ROW LINE
  - PR. LOT LINE
  - PR. EASEMENT LINE
  - ◆ FOUND SECTION CORNER AS NOTED
  - SET NO. 5 REBAR WITH 1.25" Y.P.C. PLS 38445 FLUSH WITH GROUND
  - ⊕ BLOCK NUMBER
  - △ SIGHT DISTANCE
  - △ TRIANGLE / EASEMENT
  - BOUNDARY DIMENSION
  - LOT DIMENSION
  - U.E. = UTILITY EASEMENT HEREBY GRANTED

DATE	REVISIONS	DESCRIPTION
07/17/17	1	SECOND SUBMITTAL COMMENTS
09/09/17	2	REVISED LOT GEOMETRY
11/23/16	3	FIRST SUBMITTAL COMMENTS

**Manhard CONSULTING LTD.**  
 8008 E. Arapahoe Court, Suite 110, Centennial, CO 80112  
 303.320.0950  
 303.320.0420  
 Civil Engineers • Surveyors • Water Resources Engineers • Water & Wastewater Engineers  
 Construction Managers • Environmental Scientists • Landscape Architects • Planners

COMPARK VILLAGE SOUTH FILING NO. 2  
 TOWN OF PARKER, COUNTY OF DOUGLAS, COLORADO  
**FINAL PLAT**



FOR AND ON BEHALF OF  
 MANHARD CONSULTING

PROJ. MGR.: JMR  
 PROJ. ASSOC.: BJP  
 DRAWN BY: GDP  
 DATE: 09/22/16  
 SCALE: 1" = 40'  
 SHEET  
**3 OF 4**  
 00C.LCPK3.10

