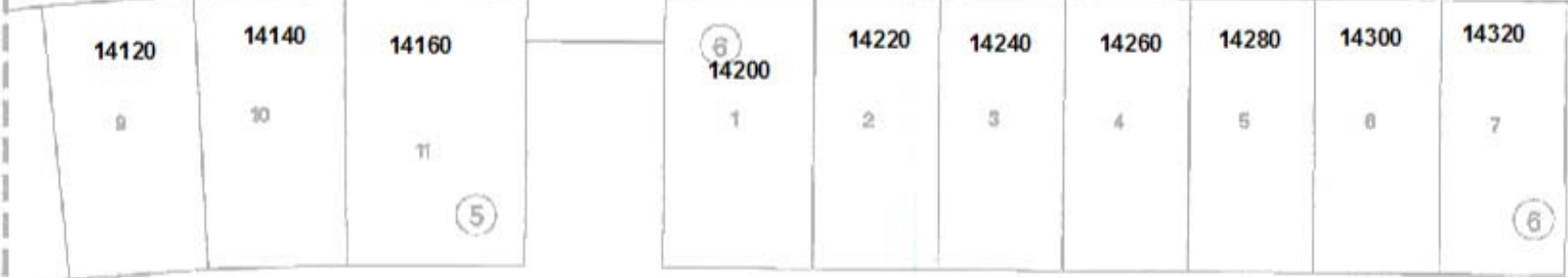


LOCATED IN THE SOUTH HALF OF SECTION 6, TOWNSHIP 6 SOUTH, RANGE 66
 TOWN OF PARKER, COUNTY OF DOUGLAS, STATE OF
 93 LOTS, 4 TRACTS, 32.872 ACRES

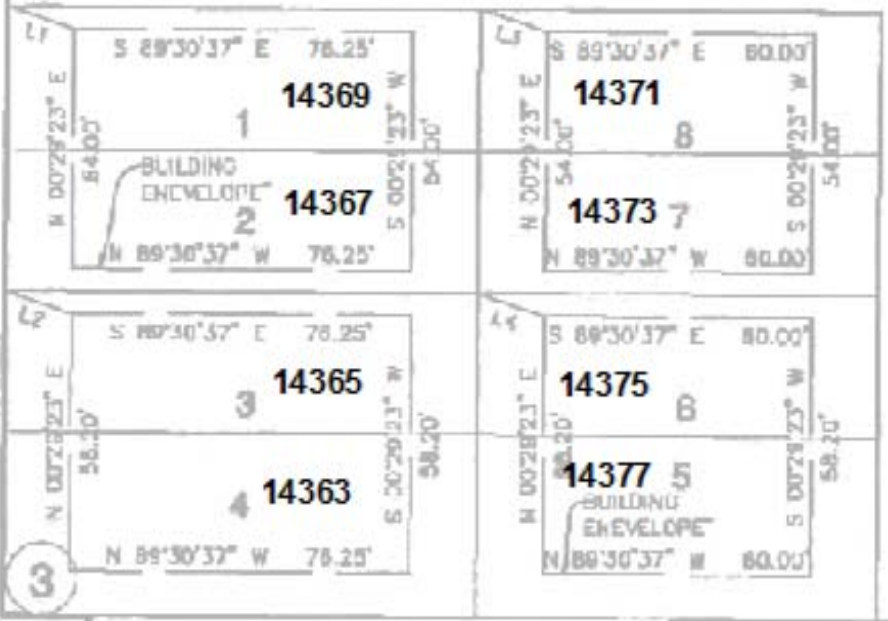
BELFORD AVENUE
 RECEPTION NO. _____
 R.O.W. VARIES



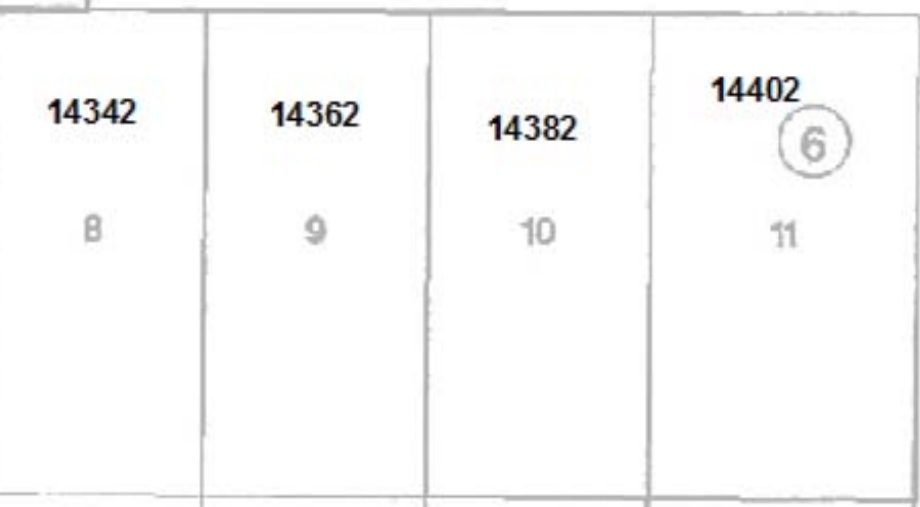
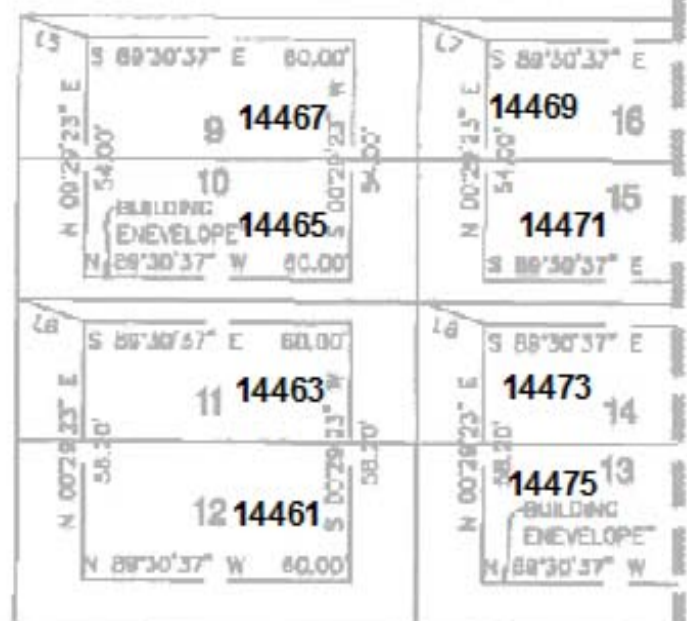
LYNX CAT STREET
 (50' R.O.W.)



SEE SHEET 2



TRACT B



COMPARK VILLAGE SOUTH FILING NO. 2 - AMENDMENT

ADDRESS PLAT

A REPLAT OF TRACT M, COMPARK VILLAGE SOUTH FILING NO. 2
 LOCATED IN THE SOUTH HALF OF SECTION 6, TOWNSHIP 6 SOUTH, RANGE 66 WEST OF THE SIXTH PRINCIPAL MERIDIAN,
 TOWN OF PARKER, COUNTY OF DOUGLAS, STATE OF COLORADO.
 89 LOTS, 2 TRACTS, 19.711 ACRES





SEE SHEET 2

	9	10	11
15	14	13	12
	14123	14141	14163 (5)

ELK PATH WAY
(55' R.O.W.)

1	2	3	4	5	6	7
22	21	20	19	18	17	16
14211 (6)	14233	14253	14273	14287	14303	14321

BUNNY HOP LANE
(55' R.O.W.)

	14122	14142	14162	14182	14202	14222	14242	14262	14282		14304	14322
7	8	9	10	11	12	13	14	15	16		17	18

					14302	(6)
	6	7	8	9	10	11
	17	16	15	14	13	12
287	14303	14321	14339	14359	14379	14399

RACCOON
TAIL WAY
(55' R.O.W.)

TRACT G
COMPARK VILLAGE SOUTH FILING NO. 1
RECEPTION INC.

SEE SHEET 4

	14304	14322	14340	14360	14380	14400 (7)
	17	18	19	20	21	22

LINE	BEARING	LENGTH
L1	S 71°34'31" E	15.21'
L2	S 71°34'31" E	15.21'
L3	S 71°34'31" E	15.21'
L4	S 71°34'31" E	15.21'
L5	S 71°34'31" E	15.21'
L6	S 71°34'31" E	15.21'