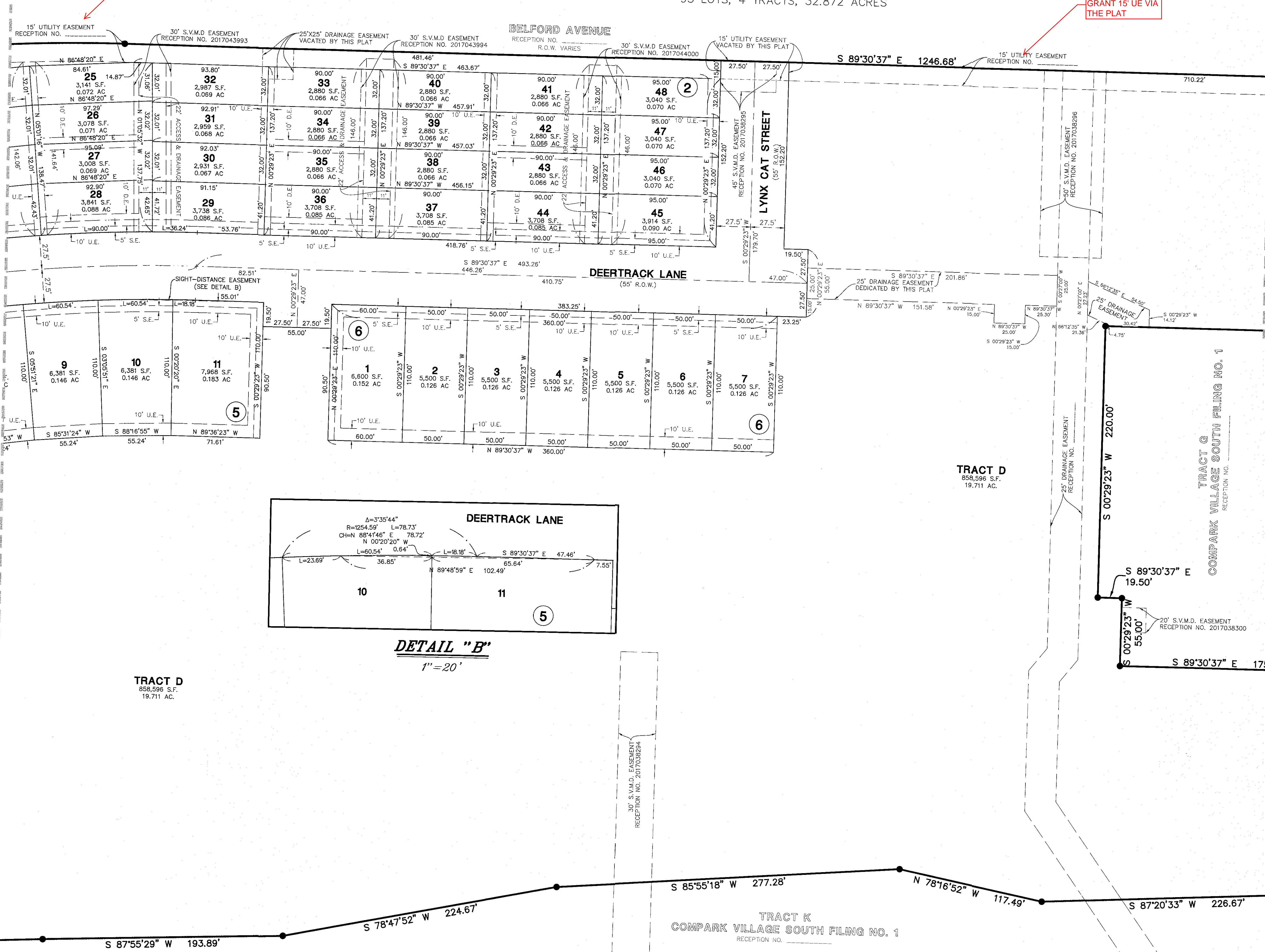
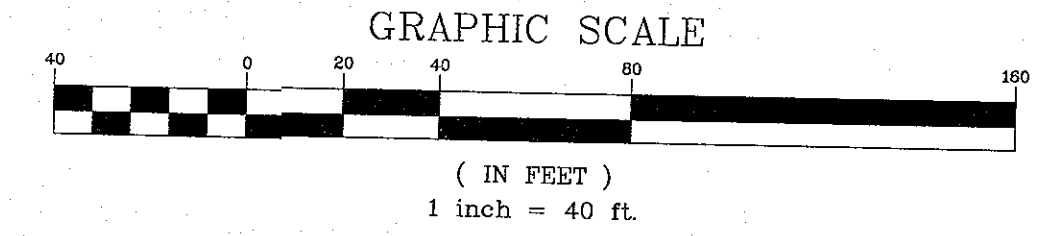


COMPARK VILLAGE SOUTH FILING NO. 2

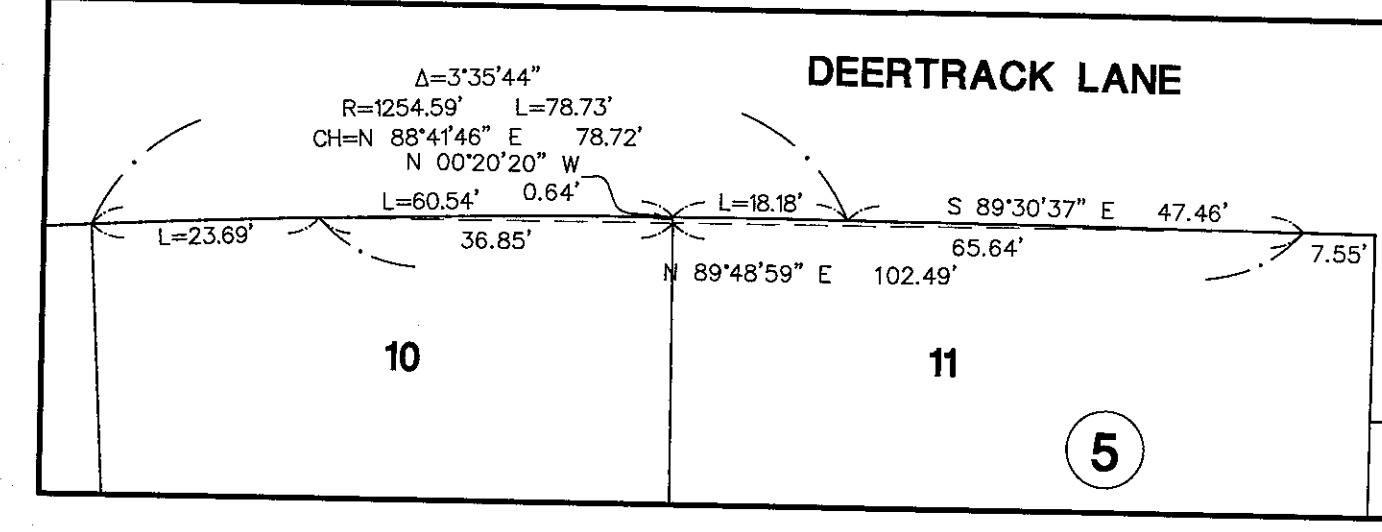
A REPLAT OF TRACT H, COMPARK VILLAGE SOUTH FILING NO. 1
 LOCATED IN THE SOUTH HALF OF SECTION 6, TOWNSHIP 6 SOUTH, RANGE 66 WEST OF THE SIXTH PRINCIPAL MERIDIAN,
 TOWN OF PARKER, COUNTY OF DOUGLAS, STATE OF COLORADO.
 93 LOTS, 4 TRACTS, 32.872 ACRES

GRANT 15' UE VIA THE PLAT

GRANT 15' UE VIA THE PLAT



- LEGEND**
- EX. BOUNDARY LINE
 - EX. SECTION LINE
 - EX. LOT LINE
 - EX. EASEMENT LINE
 - - - EX. EASEMENT LINE VACATED BY THIS PLAT
 - - - PR. ROW LINE
 - - - PR. LOT LINE
 - - - PR. EASEMENT LINE
 - ◆ FOUND SECTION CORNER AS NOTED
 - SET NO. 5 REBAR WITH 1.25" Y.P.C. PLS 38445 FLUSH WITH GROUND
 - # BLOCK NUMBER
 - △ SIGHT DISTANCE TRIANGLE / EASEMENT
 - 0.00 BOUNDARY DIMENSION
 - 0.00 LOT DIMENSION
 - U.E. UTILITY EASEMENT HEREBY GRANTED



TRACT D
858,596 S.F.
19.711 AC.



FOR AND ON BEHALF OF
 MANHARD CONSULTING

NO.	DATE	REVISIONS
1	07/17/17	SECOND SUBMITTAL COMMENTS
2	08/09/17	REVISED LOT GEOMETRY
3	11/23/17	FIRST SUBMITTAL COMMENTS

Manhard CONSULTING LTD.
 8008 E. Arapahoe Court, Suite 110, Denver, CO 80231
 Civil Engineers • Surveyors • Water Resource Engineers • Water & Wastewater Engineers
 Construction Managers • Environmental Scientists • Landscape Architects • Planners

COMPARK VILLAGE SOUTH FILING NO. 2
 TOWN OF PARKER, COUNTY OF DOUGLAS, COLORADO
FINAL PLAT

PROJ. MGR.: JMR
 PROJ. ASSOC.: BJP
 DRAWN BY: GDP
 DATE: 08/22/16
 SCALE: 1" = 40'
SHEET
4 OF 4
 00C.LCPKC3.10

JULY 28, 2017 12:28 C:\Users\j\OneDrive\Documents\Manhard\Projects\Submittal\Drawings\Final\Drawings\00C.LCPKC3.10-FS.dwg (Modified By: BJB)