



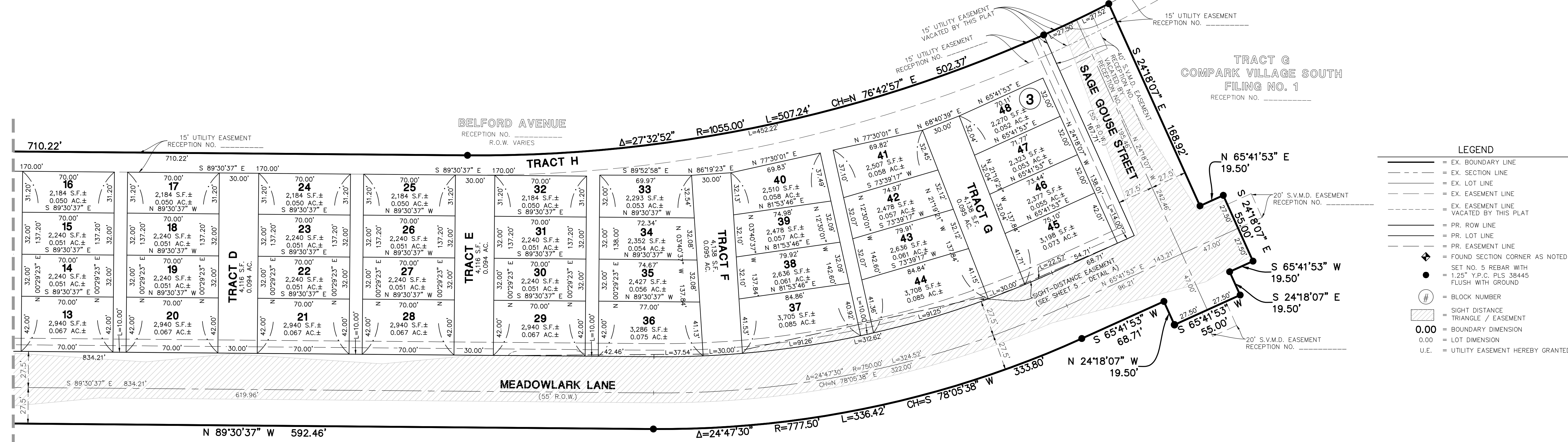
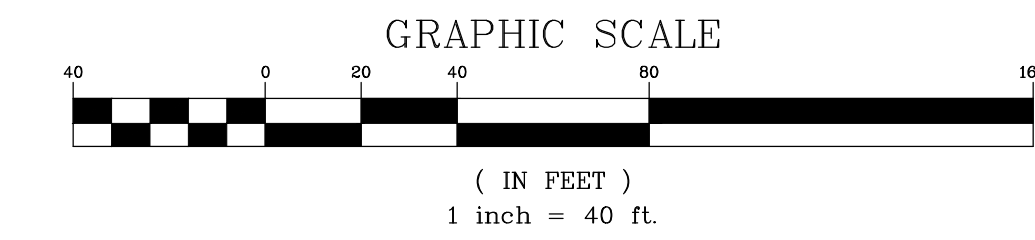




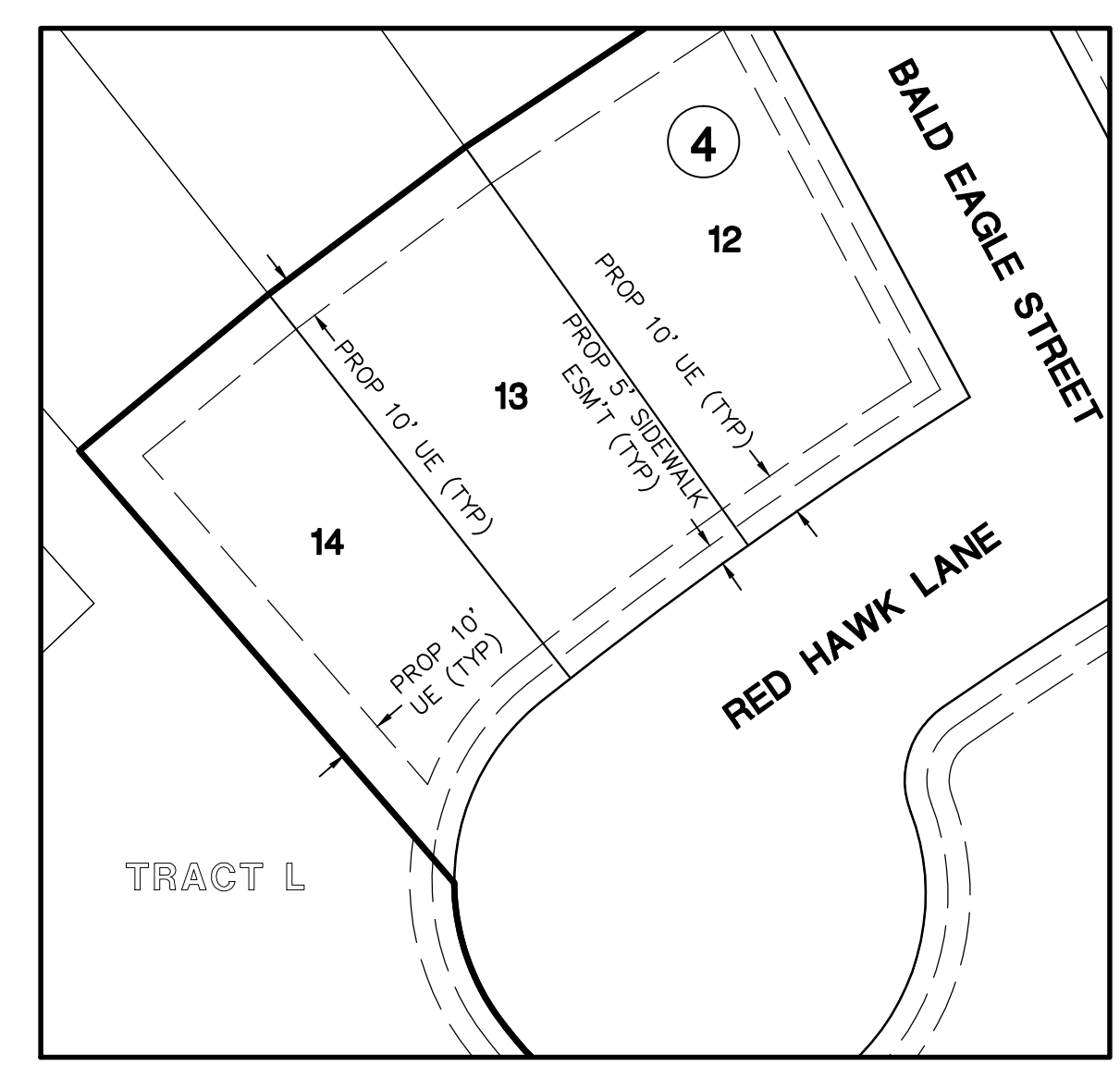


# COMPARK VILLAGE SOUTH FILING NO. 2 - AMENDMENT NO. 1

PLANNING AREAS 17 & 18 (COMPARK VILLAGE PD – FOURTH AMENDMENT)  
 A REPLAT OF TRACT M, COMPARK VILLAGE SOUTH FILING NO. 2  
 LOCATED IN THE SOUTH HALF OF SECTION 6, TOWNSHIP 6 SOUTH, RANGE 66 WEST OF THE SIXTH PRINCIPAL MERIDIAN,  
 TOWN OF PARKER, COUNTY OF DOUGLAS, STATE OF COLORADO.  
 99 LOTS, 8 TRACTS, 19.711 ACRES

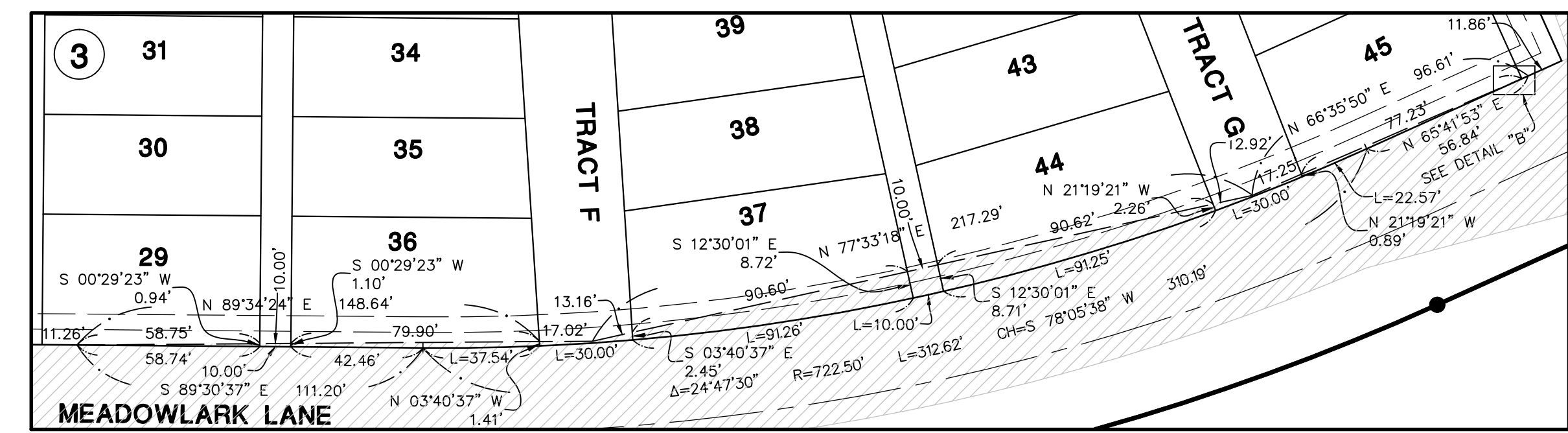


- LEGEND**
- EX. BOUNDARY LINE
  - - - EX. SECTION LINE
  - - - EX. LOT LINE
  - - - EX. EASEMENT LINE
  - - - EX. EASEMENT LINE VACATED BY THIS PLAT
  - PR. ROW LINE
  - PR. LOT LINE
  - PR. EASEMENT LINE
  - FOUND SECTION CORNER AS NOTED
  - SET NO. 5 REBAR WITH 1.25" Y.P.C. PLUS 38445 FLUSH WITH GROUND
  - # BLOCK NUMBER
  - SIGHT DISTANCE
  - TRIANGLE / EASEMENT
  - 0.00 BOUNDARY DIMENSION
  - 0.00 LOT DIMENSION
  - U.E. UTILITY EASEMENT HEREBY GRANTED



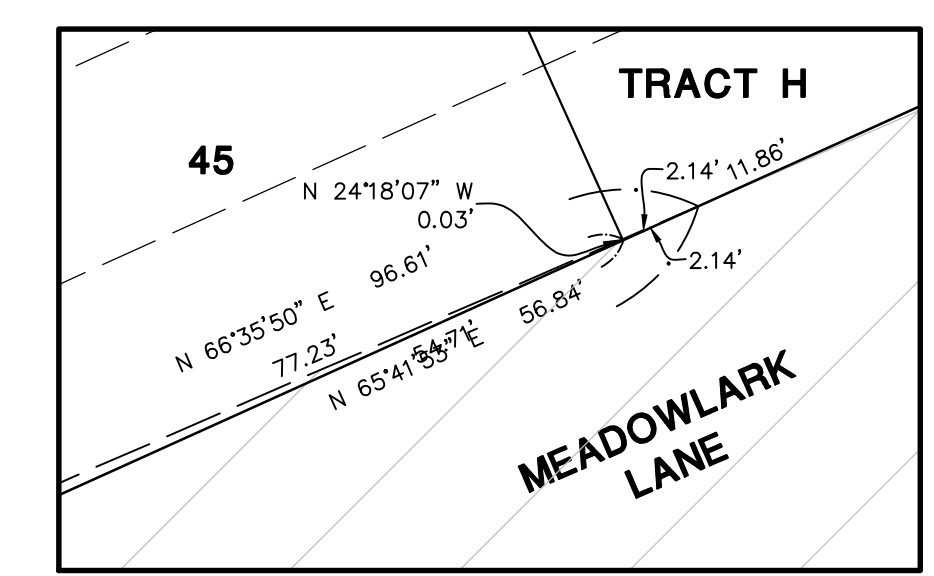
TYPICAL EASEMENT DETAIL

1" = 40'



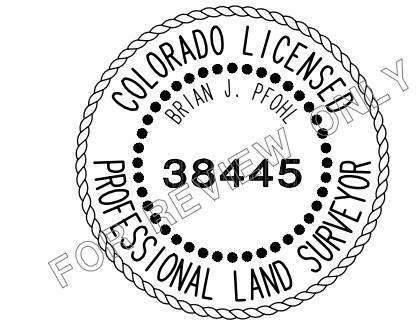
DETAIL "A"

1" = 40'



DETAIL "B"

1" = 5'



FOR AND ON BEHALF OF  
 MANHARD CONSULTING

**Manhard CONSULTING LTD.**  
 888 E. Havana Street, Suite 100, Denver, CO 80202  
 Civil Engineers • Surveyors • Water Resource Engineers • Wetland & Wetland Engineers  
 Construction Managers • Environmental Scientists • Landscape Architects • Planners

COMPARK VILLAGE SOUTH FILING NO. 2 - AMENDMENT NO. 1  
 TOWN OF PARKER, COUNTY OF DOUGLAS, COLORADO  
 FINAL PLAT

PROJ. MGR.: JMR  
 PROJ. ASSOC.: BJP  
 DRAWN BY: GDP  
 DATE: 09/23/16  
 SCALE: 1" = 40'  
 SHEET  
**5** OF **5**  
 OOC.LCPK3.10

September 23, 2016 - 14:35 Day Name: P:\Cpck3\Compark3\Residential\Drawings\Final\Drawings\Plat of Subdivision\Final\Compark\_Village\_South\_Filing\_No\_2\_-\_Amendment\_No\_1\OOC.LCPK3.10\_P52.dwg Updated By: BJP

SEE SHEET 4