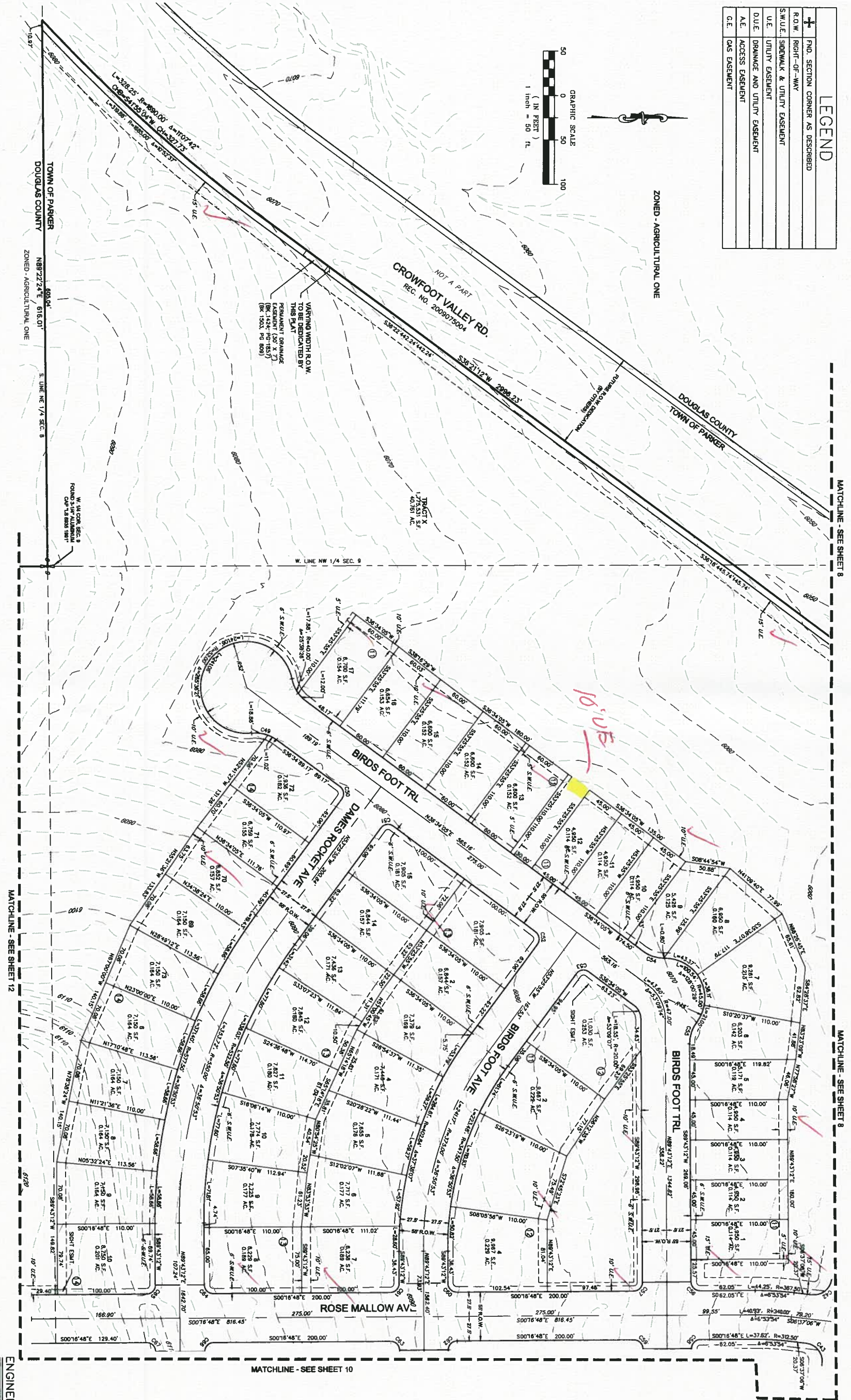
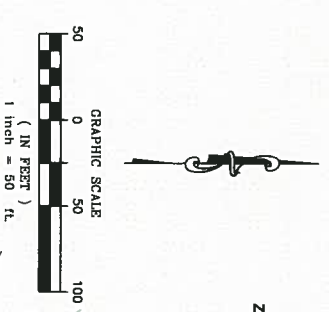


TRAILS AT CROWFOOT SUBDIVISION PRELIMINARY PLAT

A PART OF THE SECTIONS 4, 8 AND 9, TOWNSHIP 7 SOUTH, RANGE 66 WEST OF THE 6TH PRINCIPAL MERIDIAN,
TOWN OF PARKER, COUNTY OF DOUGLAS, STATE OF COLORADO
SHEET 9 OF 22

LEGEND	
+	PLAT SECTION CORNER AS DESCRIBED
—	RIGHT-OF-WAY
---	S.W.U.E., SIDEWALK & UTILITY EASEMENT
---	U.E. UTILITY EASEMENT
---	D.U.E. DRAINAGE AND UTILITY EASEMENT
---	A.E. ACCESS EASEMENT
---	G.E. GAS EASEMENT

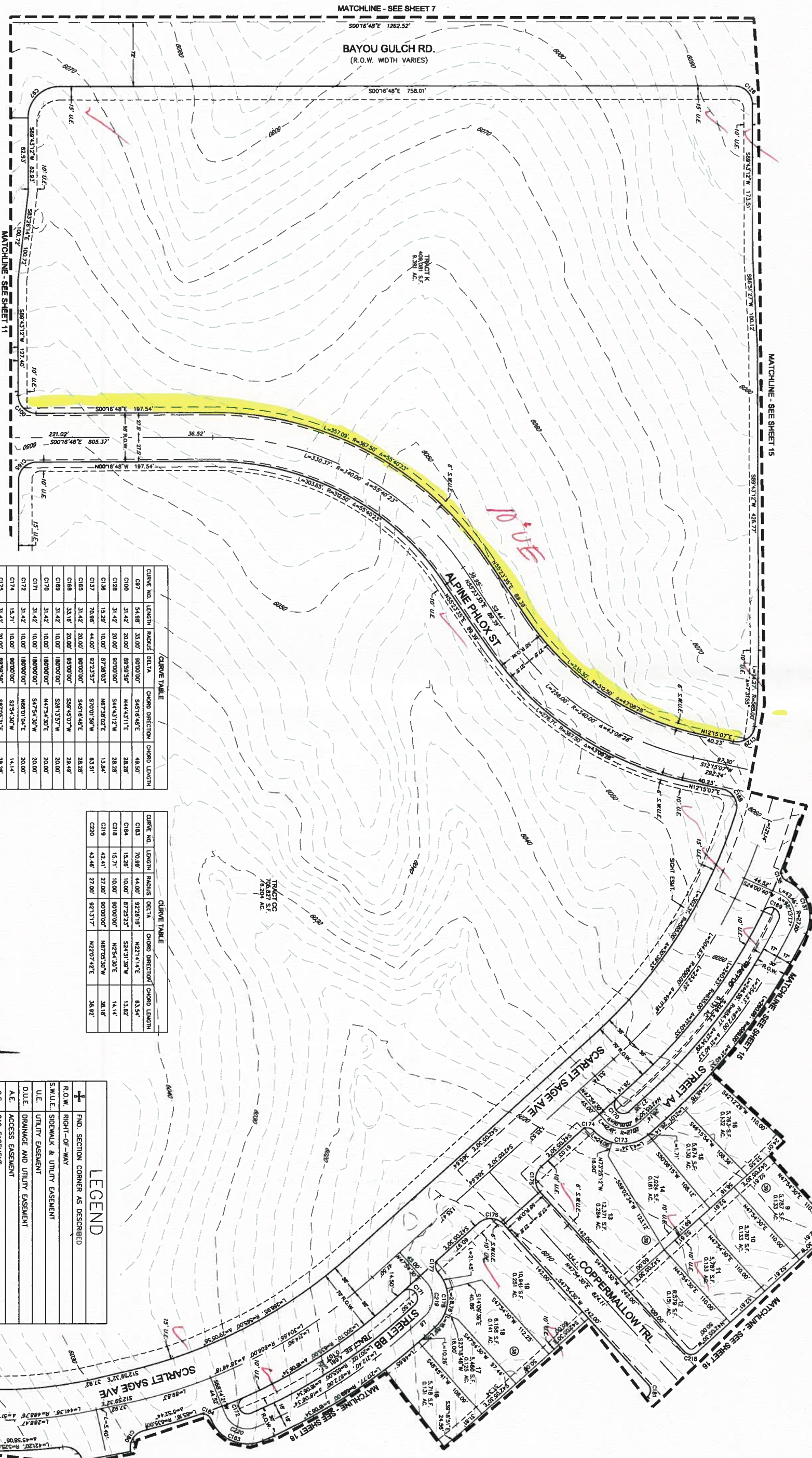


NOTE: SEE SHEET 22 FOR LINE AND CURVE TABLES

ENGINEER/SURVEYOR
CWL Consultants of Colorado, Inc.
10333 E. Dry Creek Rd., Suite 240
Englewood, CO 80152
Tel: (720) 485-8828 Fax: (720) 485-8848

TRAILS AT CROWFOOT SUBDIVISION PRELIMINARY PLAT

A PART OF THE SECTIONS 4, 8 AND 9, TOWNSHIP 7 SOUTH, RANGE 66 WEST OF THE 6TH PRINCIPAL MERIDIAN,
TOWN OF PARKER, COUNTY OF DOUGLAS, STATE OF COLORADO
SHEET 17 OF 22



LINE TABLE

LINE NO.	LENGTH	DIRECTION
1A	14.87'	S42°58'30"W
1B	14.87'	S42°58'30"W

CURVE TABLE

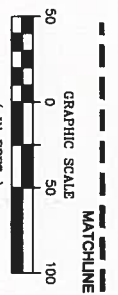
CURVE NO.	LENGTH	RADIUS	DELTA	CHORD DIRECTION	CHORD LENGTH
C197	54.86'	35.00'	90°00'00"	S45°16'46"E	49.50'
C100	31.42'	20.00'	89°39'58"	N44°43'11"E	28.28'
C128	31.42'	20.00'	90°00'00"	S44°43'11"W	28.28'
C136	15.29'	10.00'	87°38'03"	N67°38'02"E	13.84'
C137	70.88'	44.00'	92°33'57"	S70°01'58"W	63.51'
C165	31.42'	20.00'	90°00'00"	S45°16'46"E	28.28'
C168	33.18'	20.00'	83°00'00"	S89°43'07"W	28.49'
C170	31.42'	10.00'	180°00'00"	S87°53'37"W	20.00'
C171	31.42'	10.00'	180°00'00"	S47°54'30"W	20.00'
C172	31.42'	10.00'	180°00'00"	N68°01'04"E	20.00'
C174	15.71'	10.00'	90°00'00"	S73°43'06"W	14.14'
C175	31.42'	20.00'	89°39'58"	S87°03'31"E	28.28'
C176	31.42'	20.00'	90°00'00"	S73°43'06"W	28.28'
C177	15.71'	10.00'	90°00'00"	S87°03'30"E	14.14'
C178	68.12'	44.00'	90°00'00"	N87°05'30"W	62.33'
C180	31.09'	20.00'	89°13'32"	S57°49'59"E	28.05'
C181	15.71'	10.00'	90°00'00"	N87°05'30"W	14.14'

CURVE TABLE

CURVE NO.	LENGTH	RADIUS	DELTA	CHORD DIRECTION	CHORD LENGTH
C183	70.88'	44.00'	92°38'19"	N27°14'14"E	63.54'
C184	15.28'	10.00'	87°25'23"	S24°31'38"W	13.82'
C18	15.71'	10.00'	90°00'00"	N25°43'30"E	14.14'
C19	42.41'	27.00'	90°00'00"	N87°05'30"W	38.18'
C20	43.48'	27.00'	92°31'37"	N22°01'42"E	38.92'

LEGEND

- ± FND. SECTION CORNER AS DESCRIBED
- R.O.W. RIGHT-OF-WAY
- S.W.U.E. SIDEWALK & UTILITY EASEMENT
- U.E. UTILITY EASEMENT
- D.U.E. DRAINAGE AND UTILITY EASEMENT
- A.E. ACCESS EASEMENT
- G.E. GAS EASEMENT



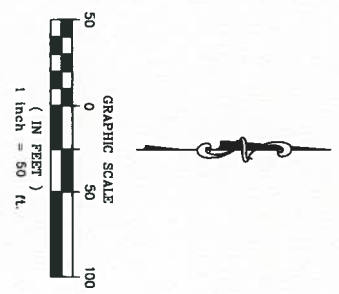
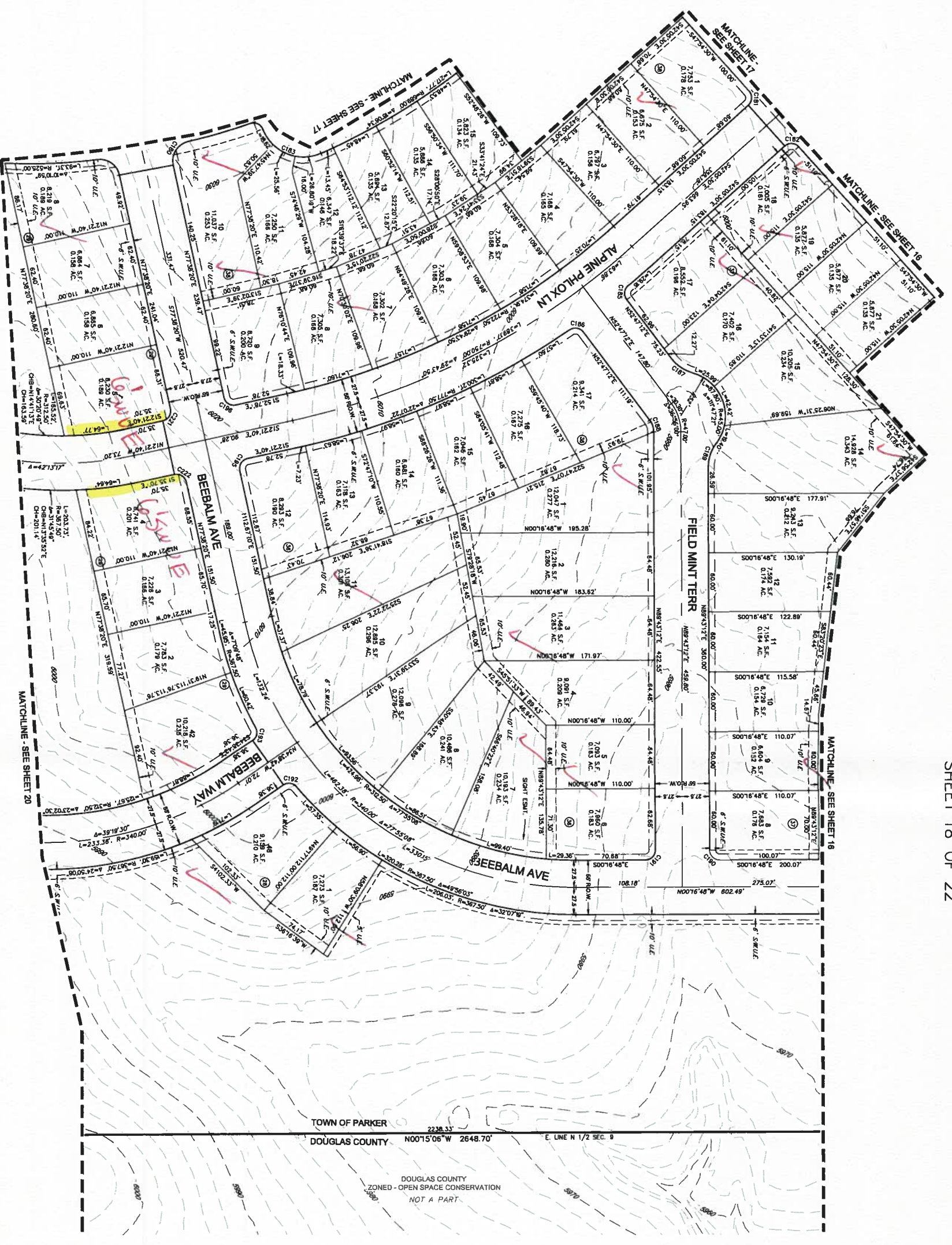
NOTE: SEE SHEET 22 FOR LINE AND CURVE TABLES

CWL Consultants of Colorado, Inc.
10333 E Dry Creek Rd., Suite 240
Englewood, CO 80112
Tel: (720) 488-8828 Fax: (720) 488-0648

ENGINEER/SURVEYOR

TRAILS AT CROWFOOT SUBDIVISION PRELIMINARY PLAT

A PART OF THE SECTIONS 4, 8 AND 9, TOWNSHIP 7 SOUTH, RANGE 66 WEST OF THE 6th PRINCIPAL MERIDIAN,
TOWN OF PARKER, COUNTY OF DOUGLAS, STATE OF COLORADO
SHEET 18 OF 22



CURVE TABLE

CURVE NO.	LENGTH	RADIUS	DELTA	CURVE DIRECTION	CURVE LENGTH
C180	31.08'	20.00'	89°03'27"	S57°48'59"E	28.05'
C181	15.37'	10.00'	90°00'00"	N87°00'00"W	14.14'
C182	15.37'	10.00'	90°00'00"	S25°30'00"W	14.14'
C183	70.89'	44.00'	92°28'19"	N27°14'14"E	63.54'
C184	15.33'	10.00'	87°16'14"	S83°34'41"E	13.80'
C185	15.33'	10.00'	87°16'14"	S9°08'03"W	13.80'
C186	12.57'	18.50'	36°56'00"	S71°13'12"W	12.35'
C187	15.37'	10.00'	90°00'00"	N44°43'12"E	14.14'
C188	14.37'	10.00'	84°17'58"	N78°47'40"W	13.42'
C189	15.37'	10.00'	90°00'00"	S37°21'40"E	14.14'
C190	15.37'	10.00'	90°00'00"	N32°38'20"E	14.14'
C221	15.37'	10.00'	90°00'00"	N57°14'40"W	14.14'
C222	15.37'	10.00'	90°00'00"	S32°38'20"W	14.14'

LEGEND

+	FND. SECTION CORNER AS DESCRIBED
—	R.O.W. RIGHT-OF-WAY
—	SWALE, SIDEWALK & UTILITY EASEMENT
—	U.E. UTILITY EASEMENT
—	D.U.E. DRAINAGE AND UTILITY EASEMENT
—	A.E. ACCESS EASEMENT
—	G.S. GAS EASEMENT

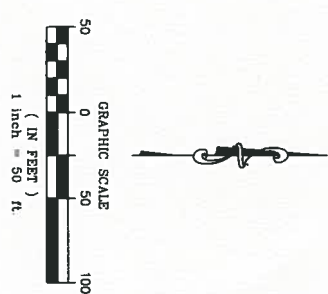
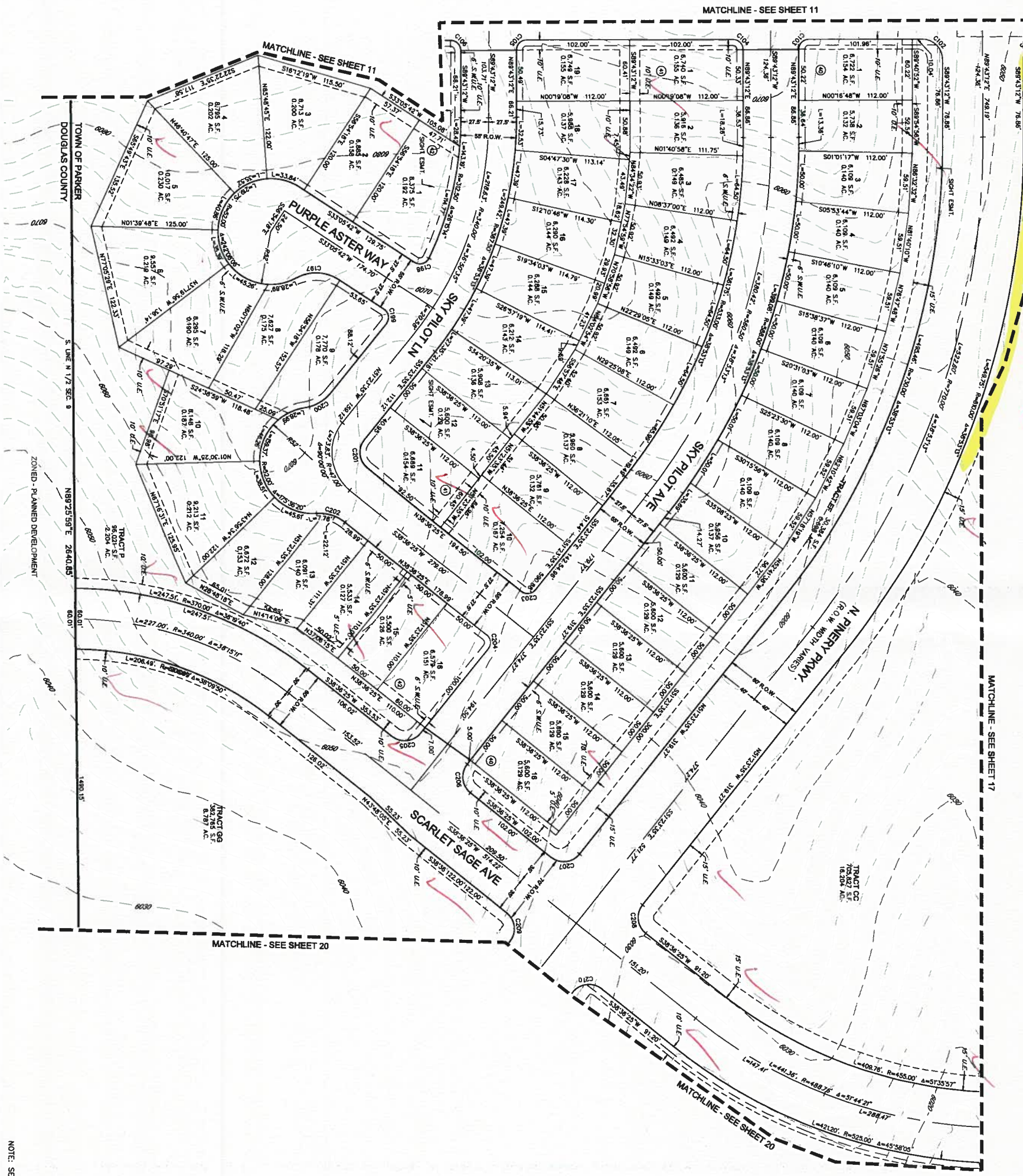
ENGINEER/SURVEYOR
CVL Consultants
 of Colorado, Inc.
 10333 E. Dry Creek Rd., Suite 240
 Greenwood, CO 80112
 Tel: (720) 468-8888 Fax: (720) 468-8648

TRAILS AT CROWFOOT SUBDIVISION PRELIMINARY PLAT
 PRELIMINARY PLAT
 DATE: 02/17/2017
 PROJECT: TRAILS AT CROWFOOT SUBDIVISION PRELIMINARY PLAT
 SHEET 18 OF 22

TRAILS AT CROWFOOT SUBDIVISION PRELIMINARY PLAT

A PART OF THE SECTIONS 4, 8 AND 9, TOWNSHIP 7 SOUTH, RANGE 66 WEST OF THE 6TH PRINCIPAL MERIDIAN,
TOWN OF PARKER, COUNTY OF DOUGLAS, STATE OF COLORADO
SHEET 19 OF 22

10' U.E.
Add 15' U.E.



CURVE NO.	LENGTH	RADIUS	DELTA	CHORD DIRECTION	CHORD LENGTH
C188	18.87'	10.00'	87°00'00"	N87°00'00"W	14.81'
C189	18.87'	10.00'	87°00'00"	S87°00'00"W	14.81'
C200	20.00'	40.00'	42°48'10"	N42°48'10"W	20.19'
C201	20.00'	40.00'	42°48'10"	S42°48'10"W	20.19'
C202	15.71'	10.00'	87°00'00"	N87°00'00"W	14.14'
C203	15.71'	10.00'	87°00'00"	S87°00'00"W	14.14'
C204	31.42'	20.00'	87°00'00"	N87°00'00"W	20.29'
C205	31.42'	20.00'	87°00'00"	S87°00'00"W	20.29'
C206	31.42'	20.00'	87°00'00"	N87°00'00"W	20.29'
C207	31.42'	20.00'	87°00'00"	S87°00'00"W	20.29'
C208	31.42'	20.00'	87°00'00"	N87°00'00"W	20.29'
C209	31.42'	20.00'	87°00'00"	S87°00'00"W	20.29'
C210	31.42'	20.00'	87°00'00"	N87°00'00"W	20.29'

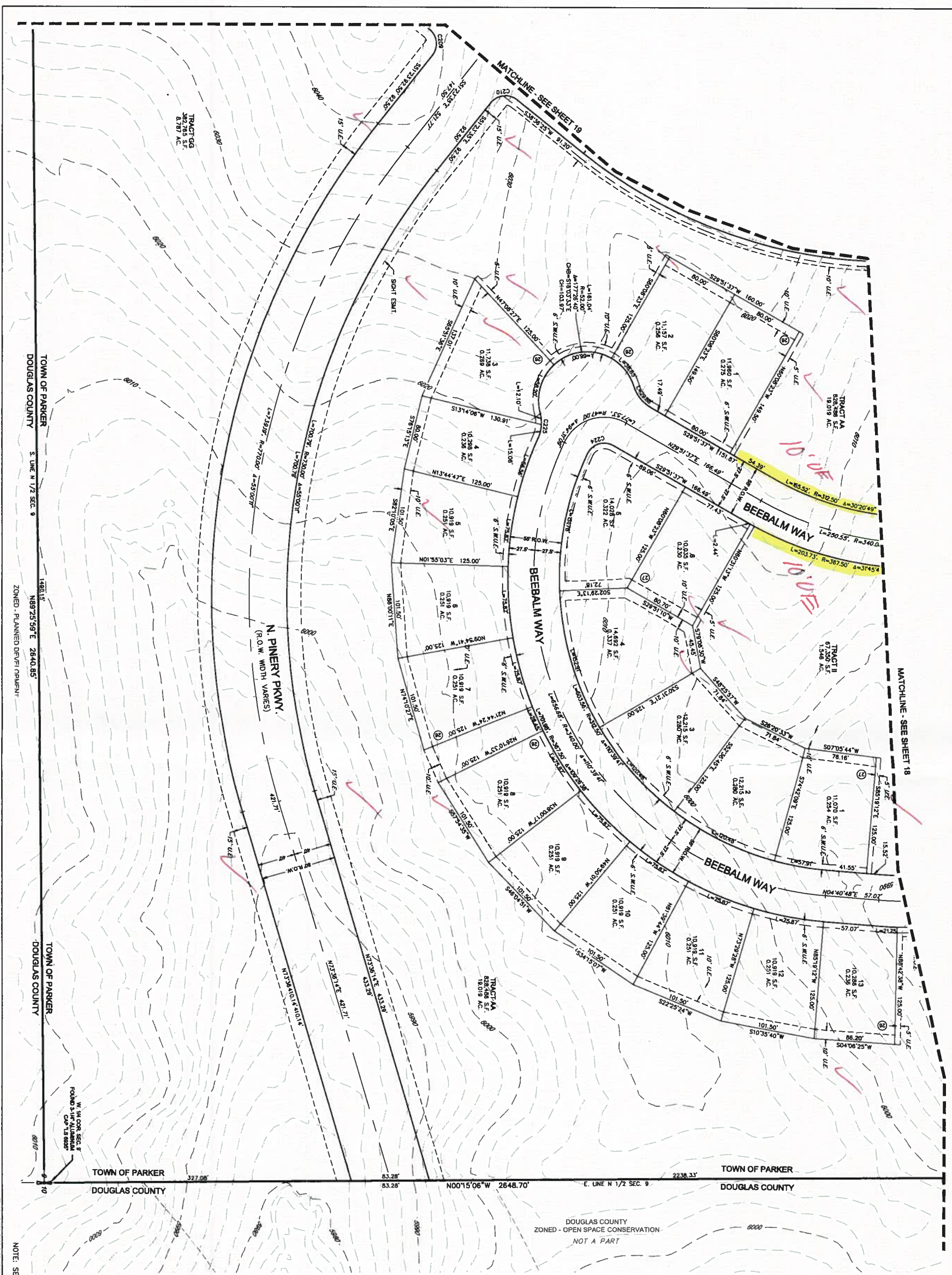
Symbol	Description
+	FND. SECTION CORNER AS DESCRIBED
—+—	ROW, RIGHT-OF-WAY
—S.W.U.E.—	SIDEWALK & UTILITY EASEMENT
—U.E.—	UTILITY EASEMENT
—D.U.E.—	DRAINAGE AND UTILITY EASEMENT
—A.E.—	ACCESS EASEMENT
—G.E.—	GAS EASEMENT

ENGINEER/SURVEYOR
CVL Consultants
 of Colorado, Inc.
 10333 E. Dry Creek Rd., Suite 240
 Greenwood, CO 80112
 Tel: (720) 485-8828 / Fax: (720) 485-8848

NOTE: SEE SHEET 22 FOR LINE AND CURVE TABLES

TRAILS AT CROWFOOT SUBDIVISION PRELIMINARY PLAT

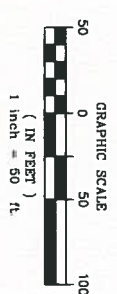
A PART OF THE SECTIONS 4, 8 AND 9, TOWNSHIP 7 SOUTH, RANGE 66 WEST OF THE 6th PRINCIPAL MERIDIAN,
TOWN OF PARKER, COUNTY OF DOUGLAS, STATE OF COLORADO
SHEET 20 OF 22



DOUGLAS COUNTY
ZONED - OPEN SPACE CONSERVATION
NOT A PART

CURVE TABLE

CURVE NO.	LENGTH	RADIUS	DELTA	CHORD DIRECTION	CHORD LENGTH
C208	31.42'	20.00'	89°28'23"W	28.22'	
C209	31.42'	20.00'	89°28'23"E	28.22'	
C210	32.17'	18.80'	84°11'09"	27.73'	
C211	27.16'	40.00'	89°19'19"	24.84'	



LEGEND

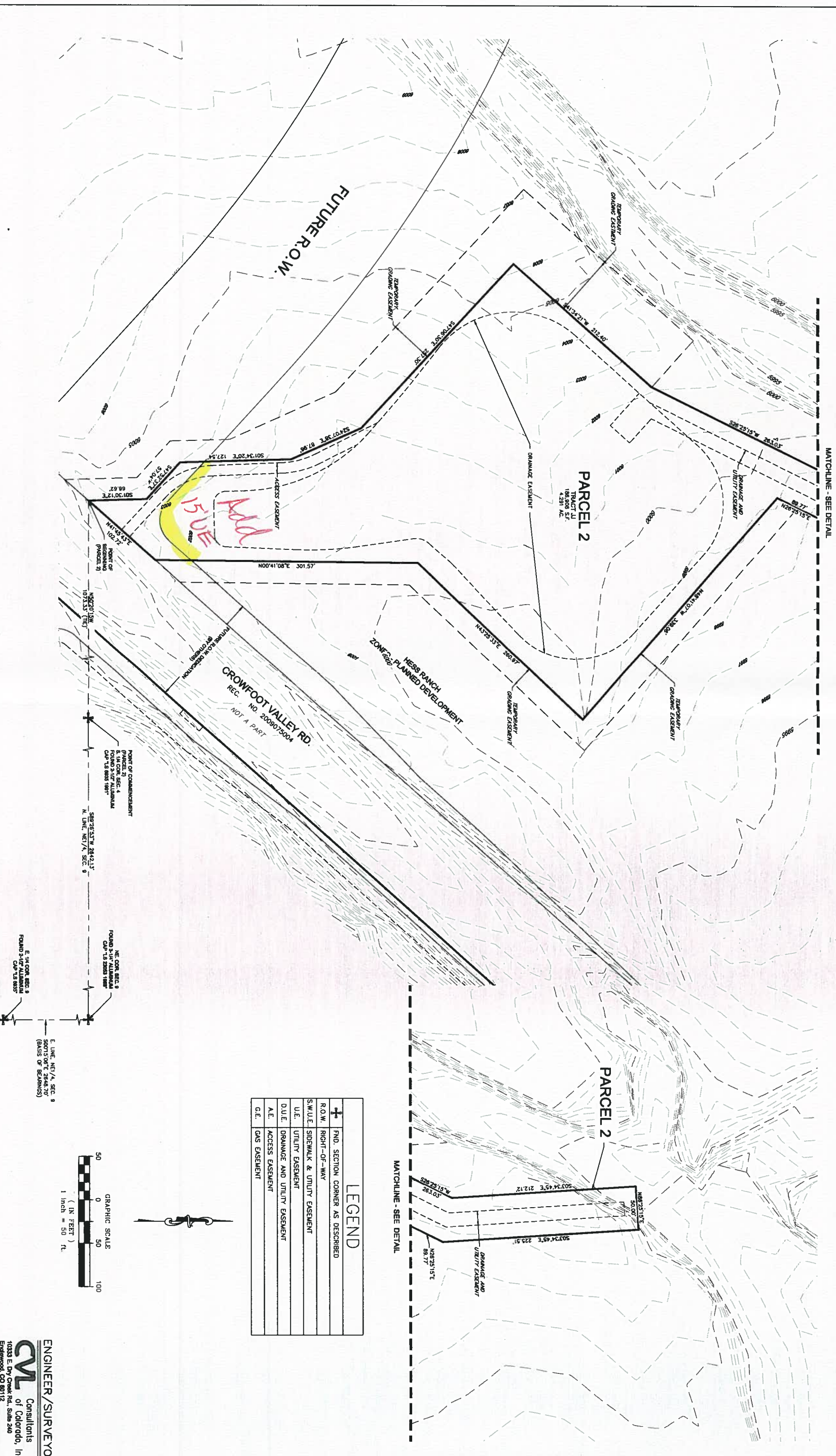
+	FND. SECTION CORNER AS DESCRIBED
—	ROW - RIGHT-OF-WAY
—	S.W.U.E. SIDEWALK & UTILITY EASEMENT
—	U.E. UTILITY EASEMENT
—	D.U.E. DRAINAGE AND UTILITY EASEMENT
—	A.E. ACCESS EASEMENT
—	G.E. GAS EASEMENT

NOTE: SEE SHEET 22 FOR LINE AND CURVE TABLES

ENGINEER/SURVEYOR
CVL Consultants
of Colorado, Inc.
10333 E. Dry Creek Rd., Suite 240
Englewood, CO 80112
Tel: (720) 485-8528 / Fax: (720) 485-8548

TRAILS AT CROWFOOT SUBDIVISION PRELIMINARY PLAT

A PART OF THE SECTIONS 4, 8 AND 9, TOWNSHIP 7 SOUTH, RANGE 66 WEST OF THE 6TH PRINCIPAL MERIDIAN,
TOWN OF PARKER, COUNTY OF DOUGLAS, STATE OF COLORADO
SHEET 21 OF 22



LEGEND	
+	FOUND SECTION CORNER AS DESCRIBED
—	R.O.W. RIGHT-OF-WAY
—	S.W.U.E. SIDEWALK & UTILITY EASEMENT
—	U.E. UTILITY EASEMENT
—	D.U.E. DRAINAGE AND UTILITY EASEMENT
—	A.E. ACCESS EASEMENT
—	G.E. GAS EASEMENT



POINT OF COMMENCEMENT
PARCEL 2
S 1/4 COR. SEC. 4
FOUND 3/16" ALUMINUM
CAP 15 28223 188"

POINT OF COMMENCEMENT
PARCEL 3
S 1/4 COR. SEC. 8
FOUND 3/16" ALUMINUM
CAP 15 28223 188"

POINT OF COMMENCEMENT
PARCEL 9
E 1/4 COR. SEC. 9
FOUND 3/16" ALUMINUM
CAP 15 28223 188"

POINT OF COMMENCEMENT
PARCEL 8
E 1/4 COR. SEC. 9
FOUND 3/16" ALUMINUM
CAP 15 28223 188"

POINT OF COMMENCEMENT
PARCEL 7
E 1/4 COR. SEC. 9
FOUND 3/16" ALUMINUM
CAP 15 28223 188"

POINT OF COMMENCEMENT
PARCEL 6
E 1/4 COR. SEC. 9
FOUND 3/16" ALUMINUM
CAP 15 28223 188"

POINT OF COMMENCEMENT
PARCEL 5
E 1/4 COR. SEC. 9
FOUND 3/16" ALUMINUM
CAP 15 28223 188"

POINT OF COMMENCEMENT
PARCEL 4
E 1/4 COR. SEC. 9
FOUND 3/16" ALUMINUM
CAP 15 28223 188"