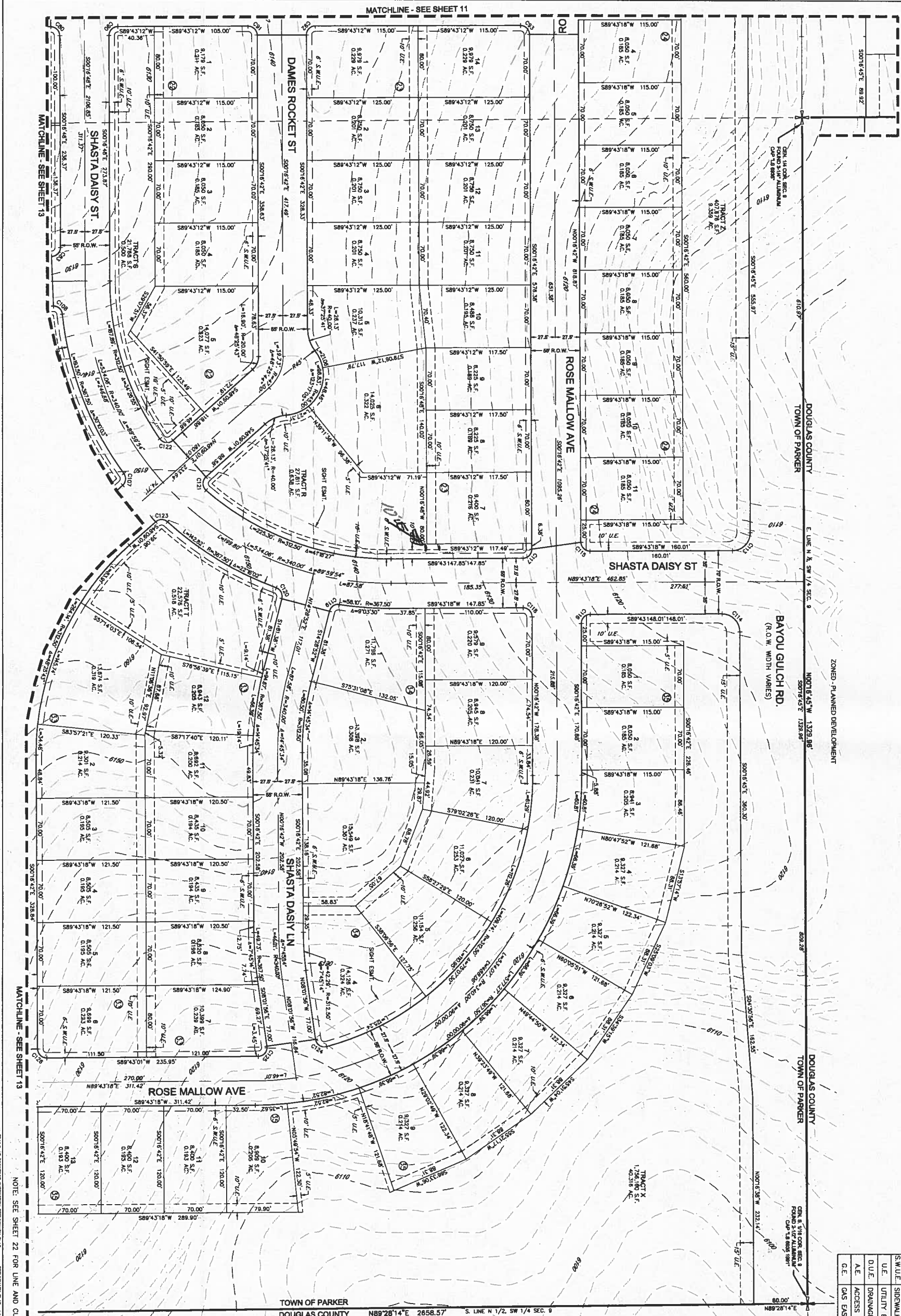


TRAILS AT CROWFOOT SUBDIVISION PRELIMINARY PLAT

A PART OF THE SECTIONS 4, 8 AND 9, TOWNSHIP 7 SOUTH, RANGE 66 WEST OF THE 6TH PRINCIPAL MERIDIAN,
TOWN OF PARKER, COUNTY OF DOUGLAS, STATE OF COLORADO
SHEET 14 OF 22

| LEGEND | |
|----------|-----------------------------------|
| + | FOUND SECTION CORNER AS DESCRIBED |
| R.O.W. | RIGHT-OF-WAY |
| S.W.U.E. | SIDEWALK & UTILITY EASEMENT |
| U.E. | UTILITY EASEMENT |
| D.U.E. | DRAINAGE AND UTILITY EASEMENT |
| A.E. | ACCESS EASEMENT |
| G.E. | GAS EASEMENT |



ENGINEER/SURVEYOR
CWL Consultants
of Colorado, Inc.
10333 E. Dry Creek Rd., Suite 240
Englewood, CO 80112
Tel: (720) 482-8588 / Fax: (720) 482-8546

DATE: 04/20/2017 PREPARED BY: J.M. BISHOP/STATION PROJECT NO: 17-001 SHEET 14 OF 22