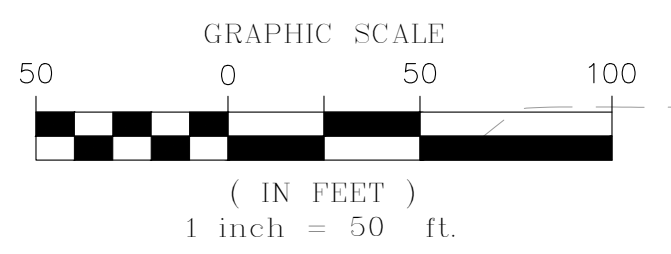
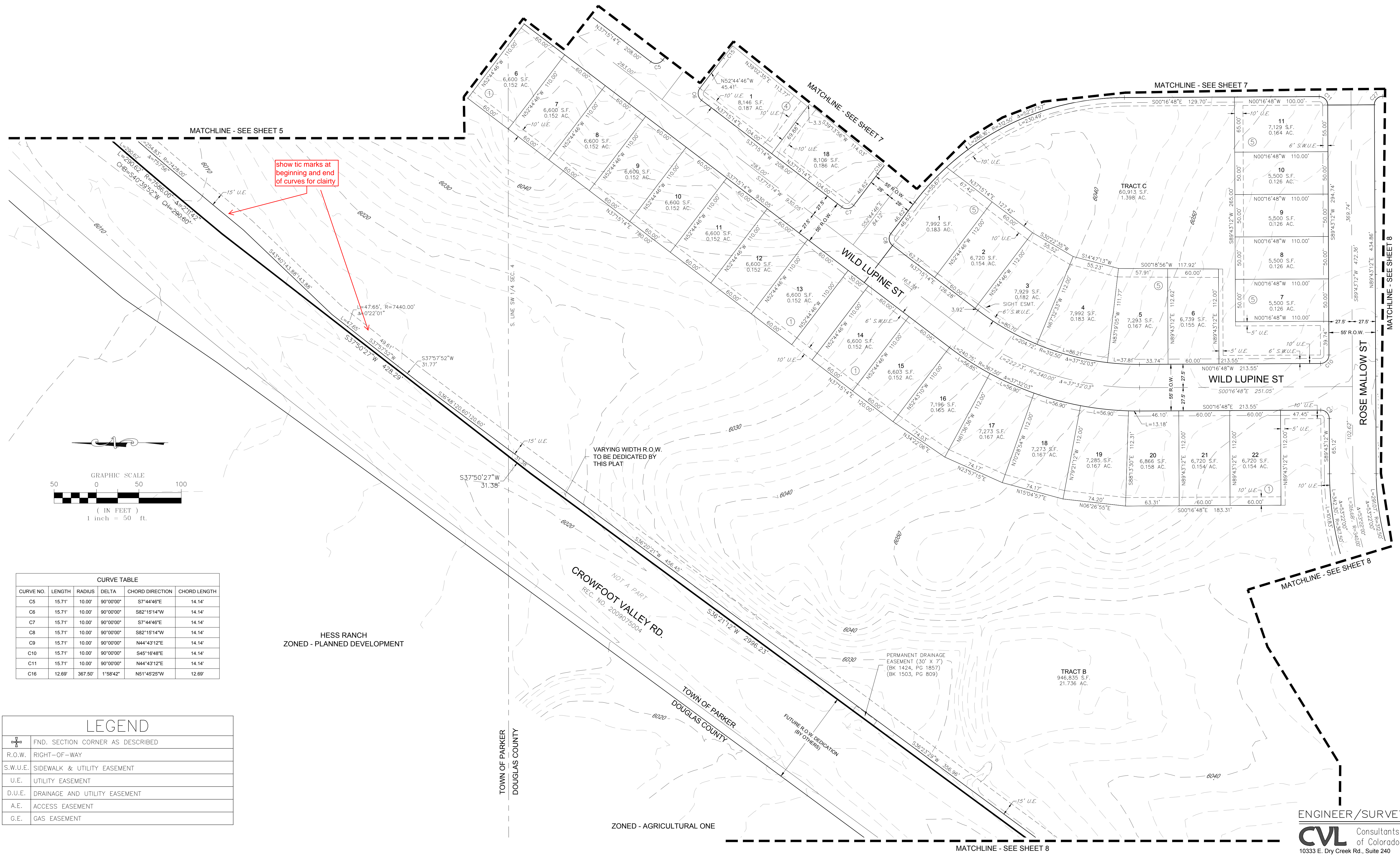


# TRAILS AT CROWFOOT SUBDIVISION PRELIMINARY PLAT

A PART OF THE SECTIONS 4, 8 AND 9, TOWNSHIP 7 SOUTH, RANGE 66 WEST OF THE 6th PRINCIPAL MERIDIAN,  
TOWN OF PARKER, COUNTY OF DOUGLAS, STATE OF COLORADO  
SHEET 6 OF 22



CURVE TABLE					
CURVE NO.	LENGTH	RADIUS	DELTA	CHORD DIRECTION	CHORD LENGTH
C5	15.71'	10.00'	90°00'00"	S7°44'46"E	14.14'
C6	15.71'	10.00'	90°00'00"	S82°15'14"W	14.14'
C7	15.71'	10.00'	90°00'00"	S7°44'46"E	14.14'
C8	15.71'	10.00'	90°00'00"	S82°15'14"W	14.14'
C9	15.71'	10.00'	90°00'00"	N44°43'12"E	14.14'
C10	15.71'	10.00'	90°00'00"	S45°16'48"E	14.14'
C11	15.71'	10.00'	90°00'00"	N44°43'12"E	14.14'
C16	12.69'	387.50'	1°58'42"	N51°45'25"W	12.69'

HESS RANCH  
ZONED - PLANNED DEVELOPMENT

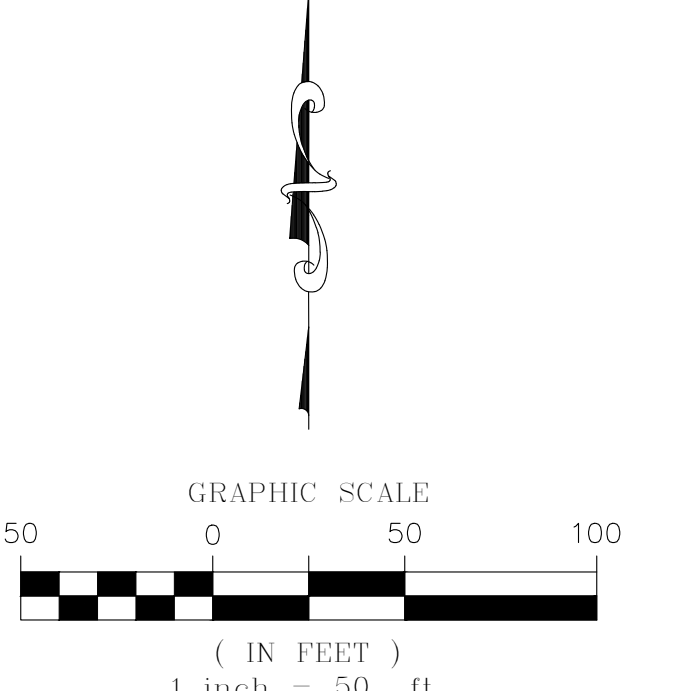
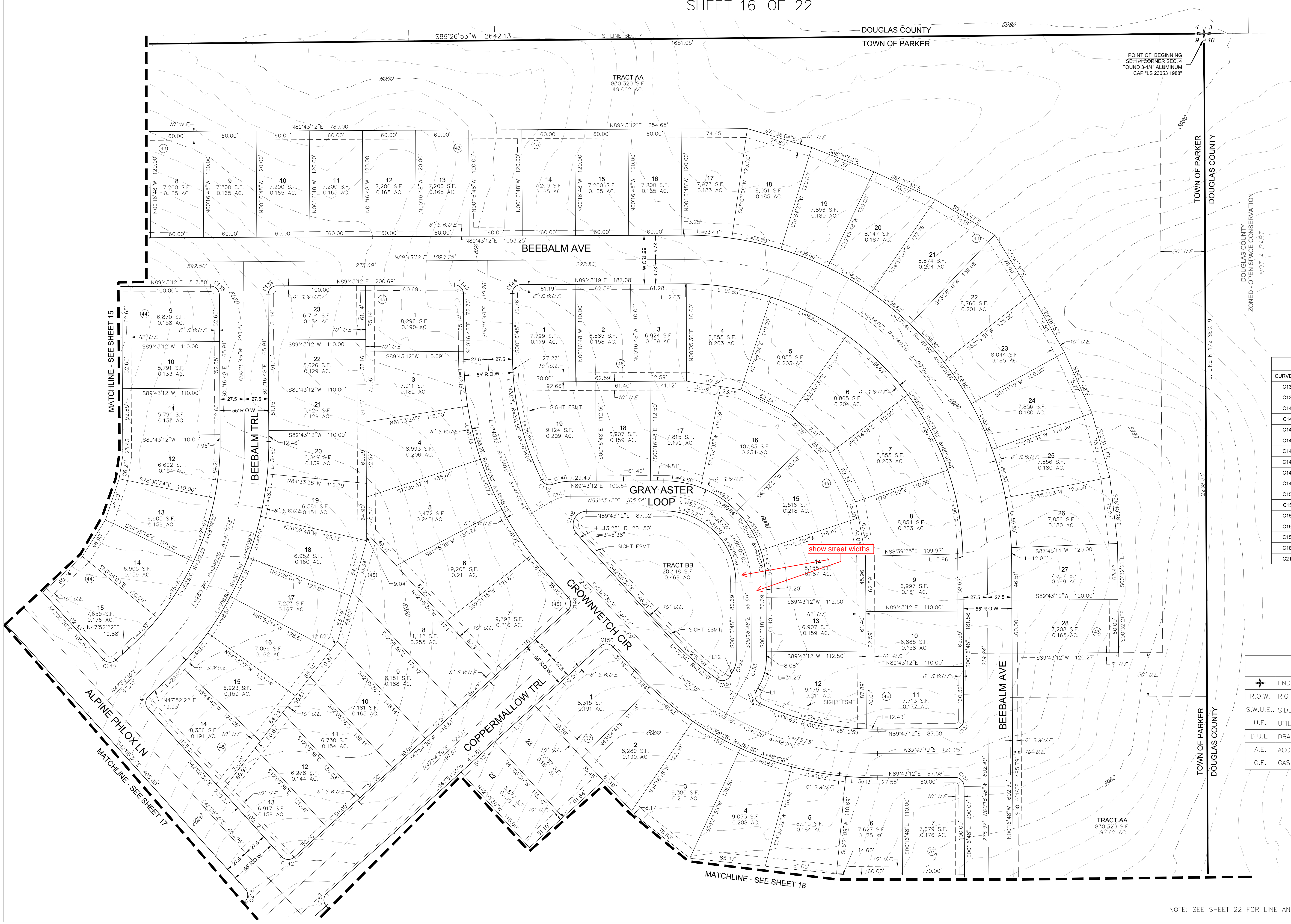
ZONED - AGRICULTURAL ONE

LEGEND	
	FND. SECTION CORNER AS DESCRIBED
	R.O.W. RIGHT-OF-WAY
	S.W.U.E. SIDEWALK & UTILITY EASEMENT
	U.E. UTILITY EASEMENT
	D.U.E. DRAINAGE AND UTILITY EASEMENT
	A.E. ACCESS EASEMENT
	G.E. GAS EASEMENT

ENGINEER/SURVEYOR  
**CVL** Consultants of Colorado, Inc.  
10333 E. Dry Creek Rd., Suite 240  
Englewood, CO 80112  
Tel: (720) 482-9526 / Fax: (720) 482-9546

# TRAILS AT CROWFOOT SUBDIVISION PRELIMINARY PLAT

A PART OF THE SECTIONS 4, 8 AND 9, TOWNSHIP 7 SOUTH, RANGE 66 WEST OF THE 6th PRINCIPAL MERIDIAN,  
TOWN OF PARKER, COUNTY OF DOUGLAS, STATE OF COLORADO  
SHEET 16 OF 22



**LINE TABLE**

LINE NO.	LENGTH	DIRECTION
L11	7.86'	S29°30'37"W
L12	7.51'	S29°30'37"W

**CURVE TABLE**

CURVE NO.	LENGTH	RADIUS	DELTA	CHORD DIRECTION	CHORD LENGTH
C138	15.71'	10.00'	89°59'57"	N45°16'49"W	14.14'
C139	15.71'	10.00'	90°00'00"	S44°43'12"W	14.14'
C140	15.71'	10.00'	90°02'08"	S87°06'34"E	14.15'
C141	15.70'	10.00'	89°57'52"	S2°53'26"W	14.14'
C142	15.71'	10.00'	90°00'00"	S87°05'30"E	14.14'
C143	15.71'	10.00'	90°00'00"	N45°16'48"W	14.14'
C144	15.71'	10.00'	90°00'00"	S44°43'12"W	14.14'
C145	14.52'	10.00'	83°10'24"	S68°06'01"E	13.28'
C148	33.87'	15.00'	129°22'35"	S25°01'55"W	27.12'
C149	15.71'	10.00'	90°00'00"	N2°54'30"E	14.14'
C150	15.71'	10.00'	89°59'58"	N87°05'29"W	14.14'
C151	16.67'	10.00'	95°30'04"	N77°15'39"E	14.80'
C154	16.54'	10.00'	94°44'26"	S17°51'36"E	14.71'
C155	15.70'	10.00'	89°57'35"	N44°44'22"E	14.14'
C156	15.71'	10.00'	90°00'00"	N45°16'48"W	14.14'
C182	15.71'	10.00'	90°00'00"	S2°54'30"E	14.14'
C218	15.71'	10.00'	90°00'00"	N2°54'30"E	14.14'

**LEGEND**

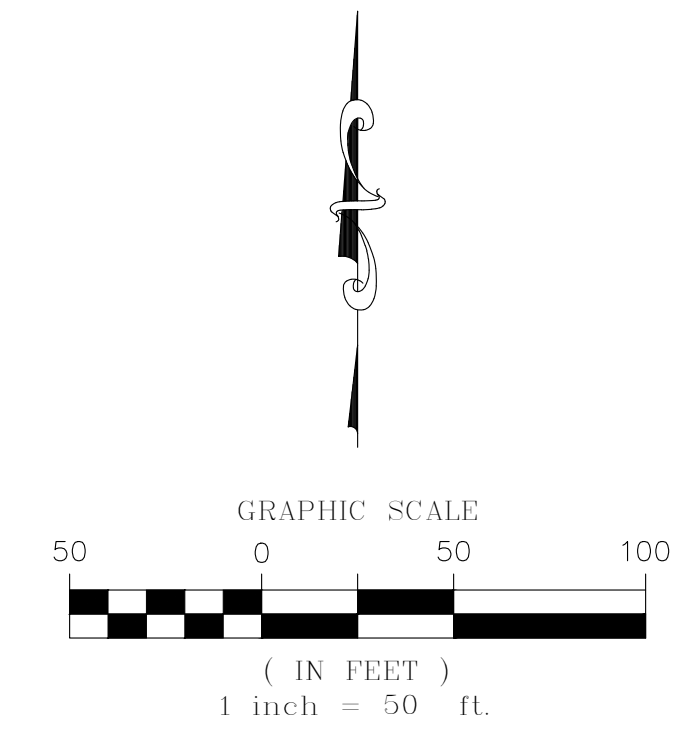
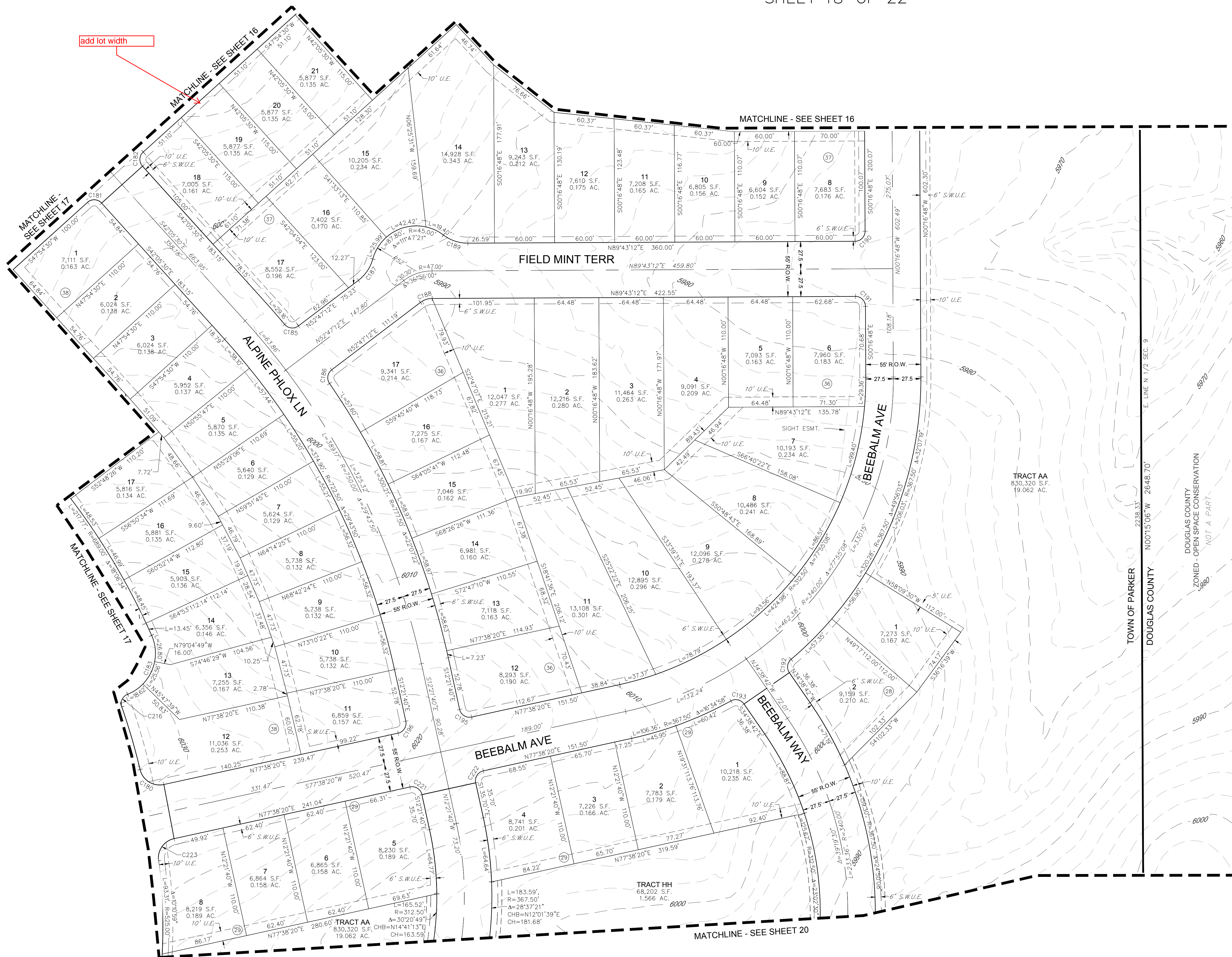
	FND. SECTION CORNER AS DESCRIBED
	R.O.W. RIGHT-OF-WAY
	S.W.U.E. SIDEWALK & UTILITY EASEMENT
	U.E. UTILITY EASEMENT
	D.U.E. DRAINAGE AND UTILITY EASEMENT
	A.E. ACCESS EASEMENT
	G.E. GAS EASEMENT

NOTE: SEE SHEET 22 FOR LINE AND CURVE TABLES

ENGINEER/SURVEYOR  
**CVL** Consultants  
of Colorado, Inc.  
10333 E. Dry Creek Rd., Suite 240  
Englewood, CO 80112  
Tel: (720) 482-9526 / Fax: (720) 482-9546

# TRAILS AT CROWFOOT SUBDIVISION PRELIMINARY PLAT

A PART OF THE SECTIONS 4, 8 AND 9, TOWNSHIP 7 SOUTH, RANGE 66 WEST OF THE 6th PRINCIPAL MERIDIAN,  
TOWN OF PARKER, COUNTY OF DOUGLAS, STATE OF COLORADO  
SHEET 18 OF 22



CURVE TABLE					
CURVE NO.	LENGTH	RADIUS	DELTA	CHORD DIRECTION	CHORD LENGTH
C180	31.09'	20.00'	89°03'22"	S57°49'59"E	28.05'
C181	15.71'	10.00'	90°00'00"	N87°05'30"W	14.14'
C182	15.71'	10.00'	90°00'00"	S2°54'30"W	14.14'
C183	70.99'	44.00'	92°26'19"	N22°14'14"E	63.54'
C185	15.23'	10.00'	87°16'14"	S83°34'41"E	13.80'
C186	15.23'	10.00'	87°16'14"	S9°09'05"W	13.80'
C188	12.57'	19.50'	36°56'00"	S71°15'12"W	12.35'
C190	15.71'	10.00'	90°00'00"	N44°43'12"E	14.14'
C191	15.71'	10.00'	90°00'00"	N45°16'48"W	14.14'
C192	14.71'	10.00'	84°17'56"	S73°30'16"W	13.42'
C193	14.71'	10.00'	84°17'56"	N76°47'40"W	13.42'
C195	15.71'	10.00'	90°00'00"	S57°21'40"E	14.14'
C196	15.71'	10.00'	90°00'00"	N32°38'20"E	14.14'
C221	15.71'	10.00'	90°00'00"	N57°21'40"W	14.14'
C222	15.71'	10.00'	90°00'00"	S32°38'20"W	14.14'

LEGEND	
	FND. SECTION CORNER AS DESCRIBED
	R.O.W. RIGHT-OF-WAY
	S.W.U.E. SIDEWALK & UTILITY EASEMENT
	U.E. UTILITY EASEMENT
	D.U.E. DRAINAGE AND UTILITY EASEMENT
	A.E. ACCESS EASEMENT
	G.E. GAS EASEMENT

NOTE: SEE SHEET 22 FOR LINE AND CURVE TABLES

ENGINEER/SURVEYOR  
**CVL** Consultants  
of Colorado, Inc.  
10333 E. Dry Creek Rd., Suite 240  
Englewood, CO 80112  
Tel: (720) 482-9526 / Fax: (720) 482-9546