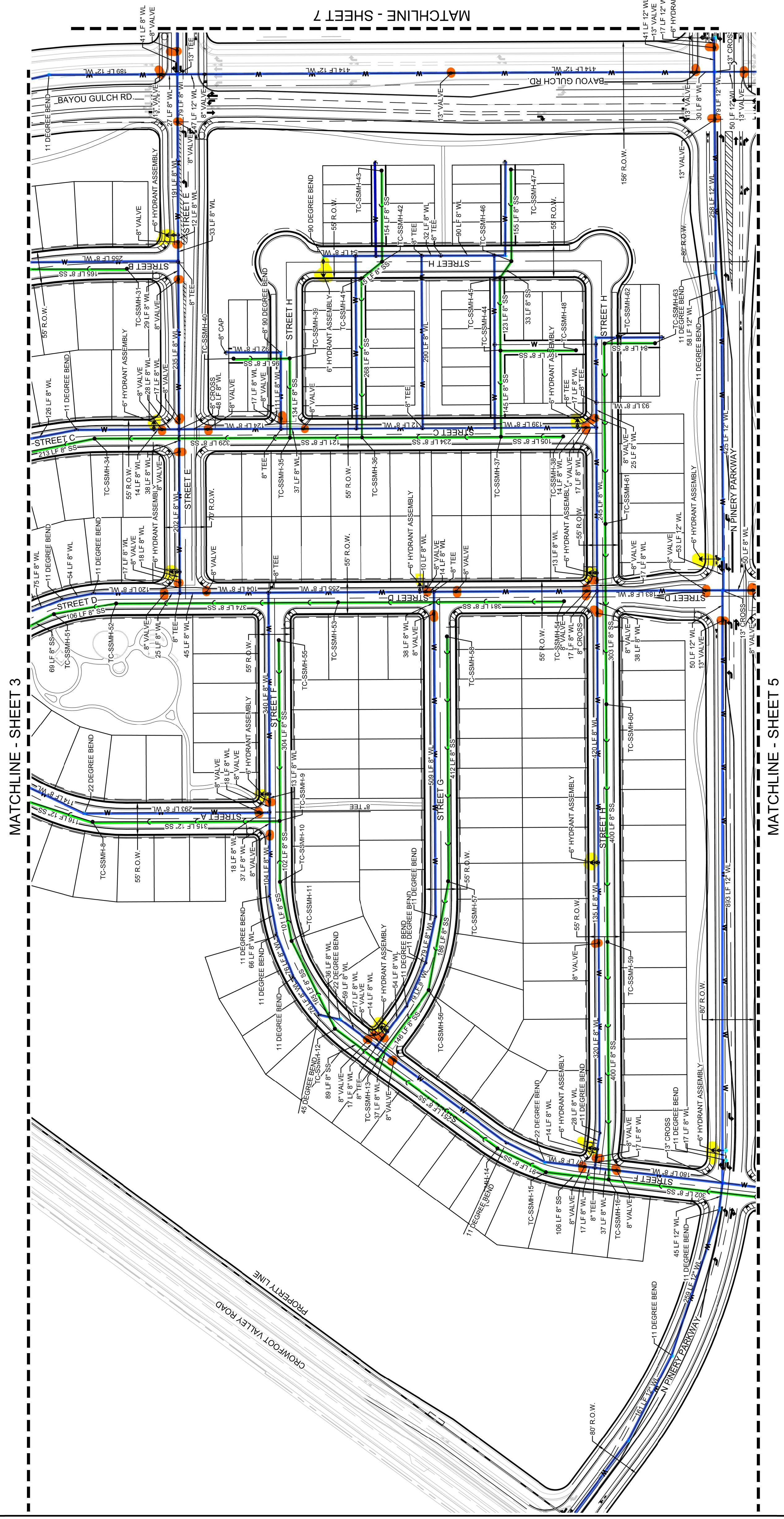
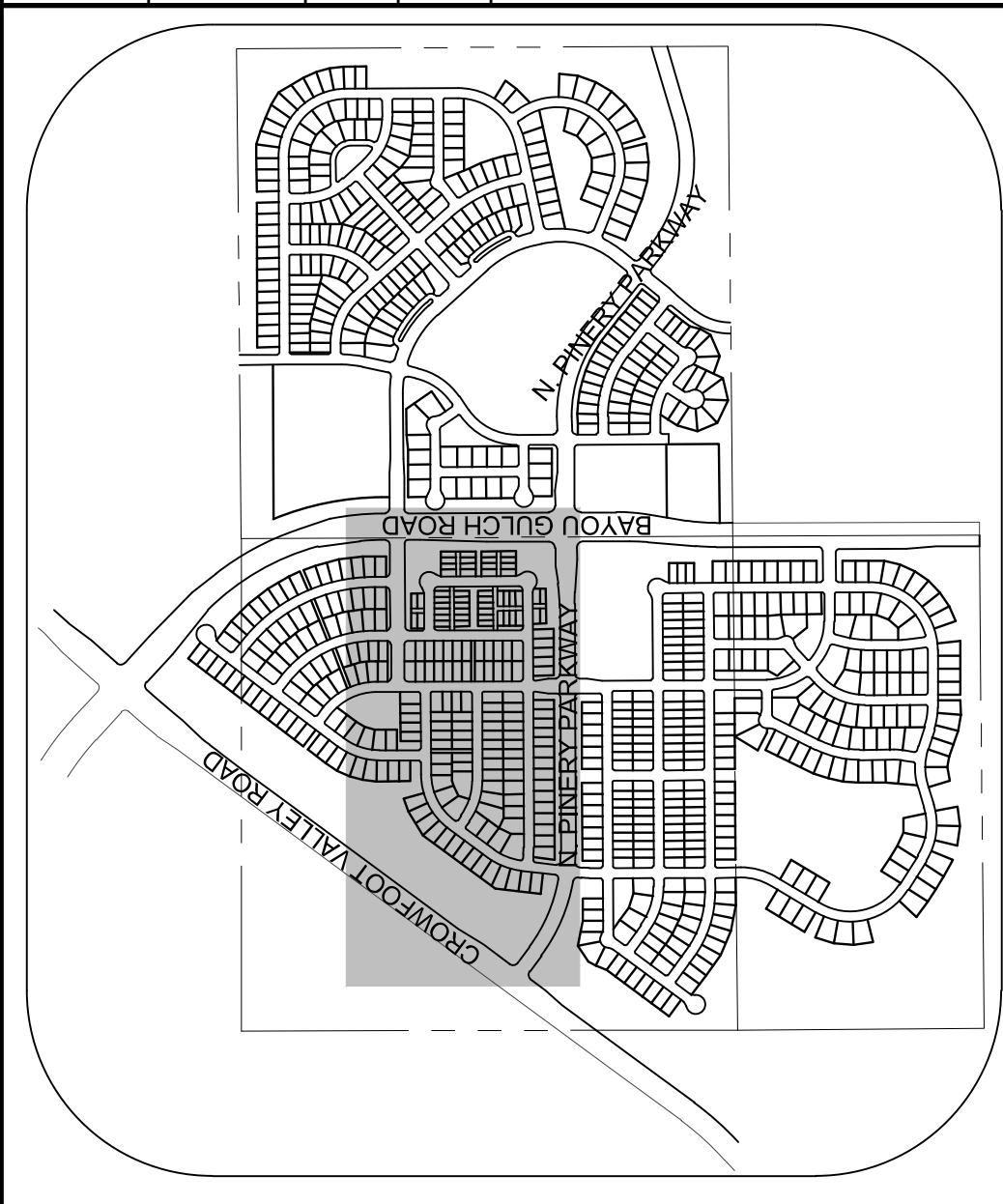




No.	Revisions	Date	Int.	Appr.	Date



**BENCHMARK**  
 DOUGLAS COUNTY CONTROL POINT KNOWN AS 1.060032, BEING A 3-1/4" ALUMINUM CAP, BEING CAPATED IN THE SOUTHWEST QUARTER SECTION 9 BY A 3-1/4" ALUMINUM CAP STAMPED LS 2983 AND AT THE EAST QUARTER CORNER OF SAID SECTION 9 BY A 2-1/2" ALUMINUM CAP, BEING CONSIDERED TO BEAR SOUTH 00°15'06" EAST, 2643.70 FEET.

**BASIS OF BEARINGS:**  
 THE EAST LINE OF THE NORTHEAST QUARTER OF SAID SECTION 9 BEING MONUMENTED AT THE NORTHEAST CORNER OF SAID SECTION 9 BY A 3-1/4" ALUMINUM CAP STAMPED LS 2983 AND AT THE EAST QUARTER CORNER OF SAID SECTION 9 BY A 2-1/2" ALUMINUM CAP, BEING CONSIDERED TO BEAR SOUTH 00°15'06" EAST, 2643.70 FEET.

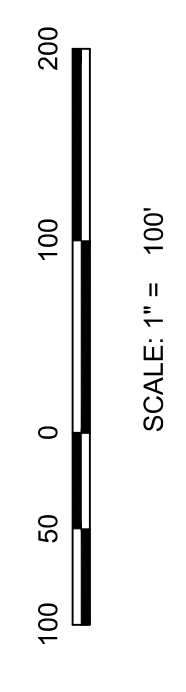
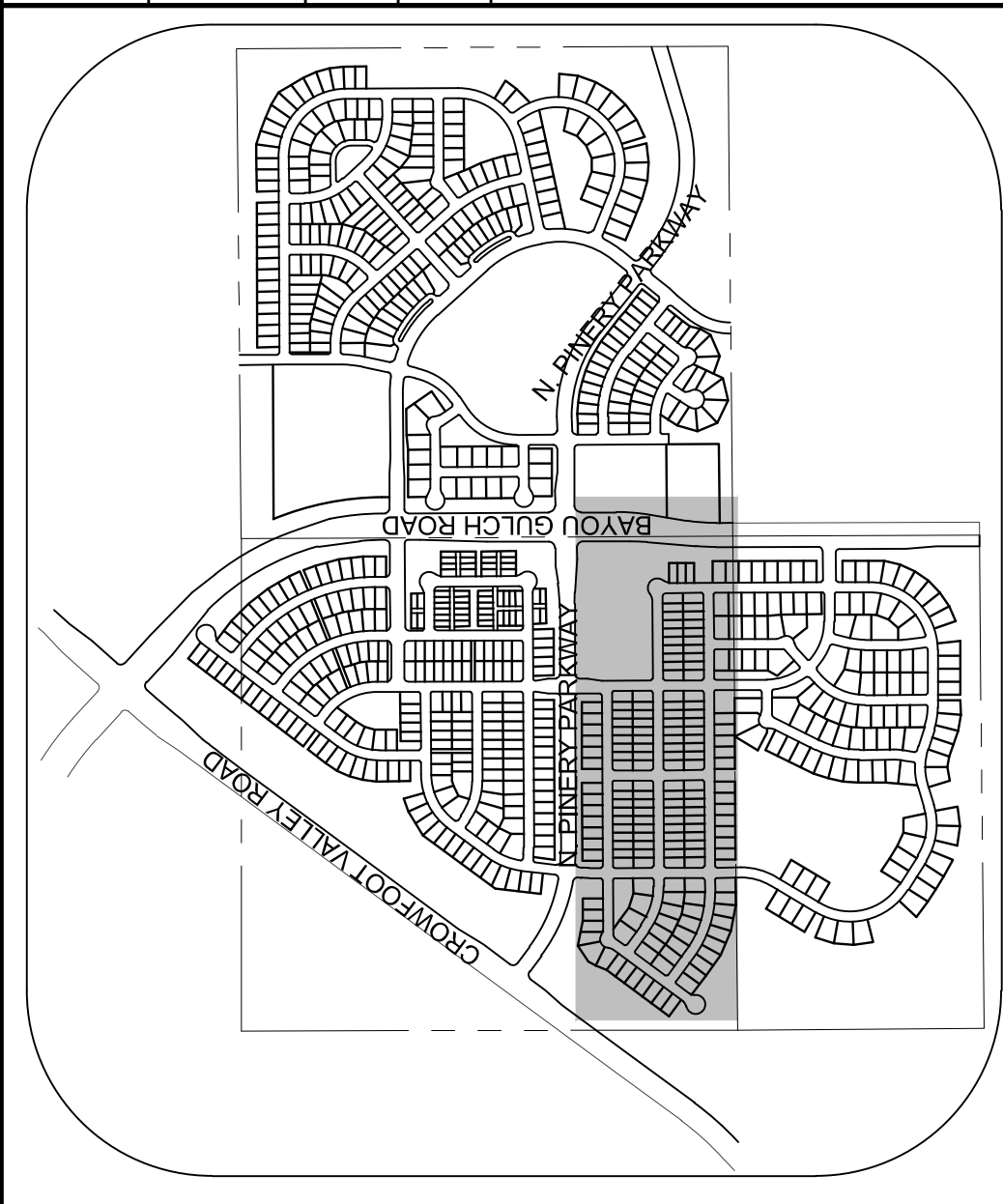
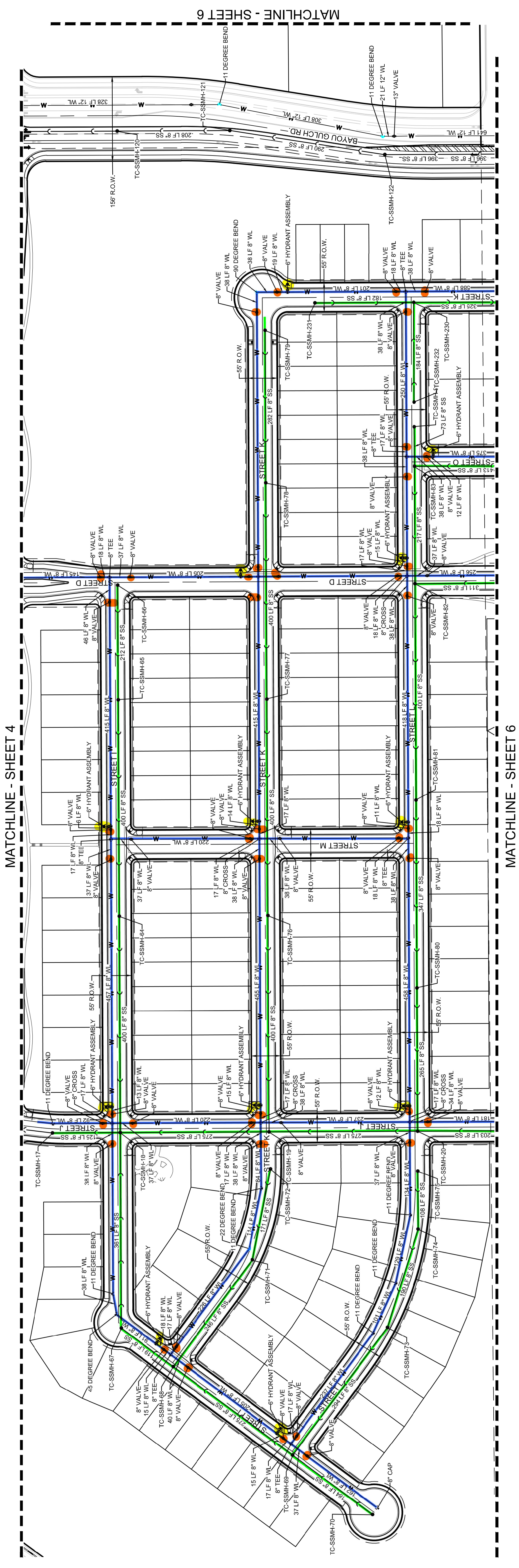
MATCHLINE - SHEET 3

MATCHLINE - SHEET 5

No.	Revisions	Date	Int.	Appr.	Date

**BENCHMARK**  
 DOUGLAS COUNTY CONTROL POINT KNOWN AS 1.060032, BEING A 3-1/4" ALUMINUM CAP, BEING LOCATED IN THE SOUTHWEST QUARTER SECTION 9 BY A 3-1/4" ALUMINUM CAP STAMPED LS 2083 AND AT THE EAST QUARTER CORNER OF SAID SECTION 9 BY A 2-1/2" ALUMINUM CAP STAMPED LS 2083. THE BENCHMARK IS PUBLISHED ON THE SIXTH PRINCIPAL MERIDIAN. GROUND PUBLISHED ELEVATION OF 1799.2870 METERS (5903.13 FEET) NAVD 83 DATUM.

**BASIS OF BEARINGS:**  
 THE EAST LINE OF THE NORTHEAST QUARTER OF SAID SECTION 9 BEING MONUMENTED AT THE NORTHEAST CORNER OF SAID SECTION 9 BY A 3-1/4" ALUMINUM CAP STAMPED LS 2083 AND AT THE EAST QUARTER CORNER OF SAID SECTION 9 BY A 2-1/2" ALUMINUM CAP STAMPED LS 2083. BEING CONSIDERED TO BEAR SOUTH 00°15'06" EAST, 2644.70 FEET.





**7**

SHEET NUMBER  
DRAWN BY: JLR  
CHECKED BY: JLM  
FILE NO: 8130283701  
DATE: NOVEMBER, 2016

PRELIMINARY CONSTRUCTION DRAWINGS  
TRAILS AT CROWFOOT  
AREA UTILITY PLAN

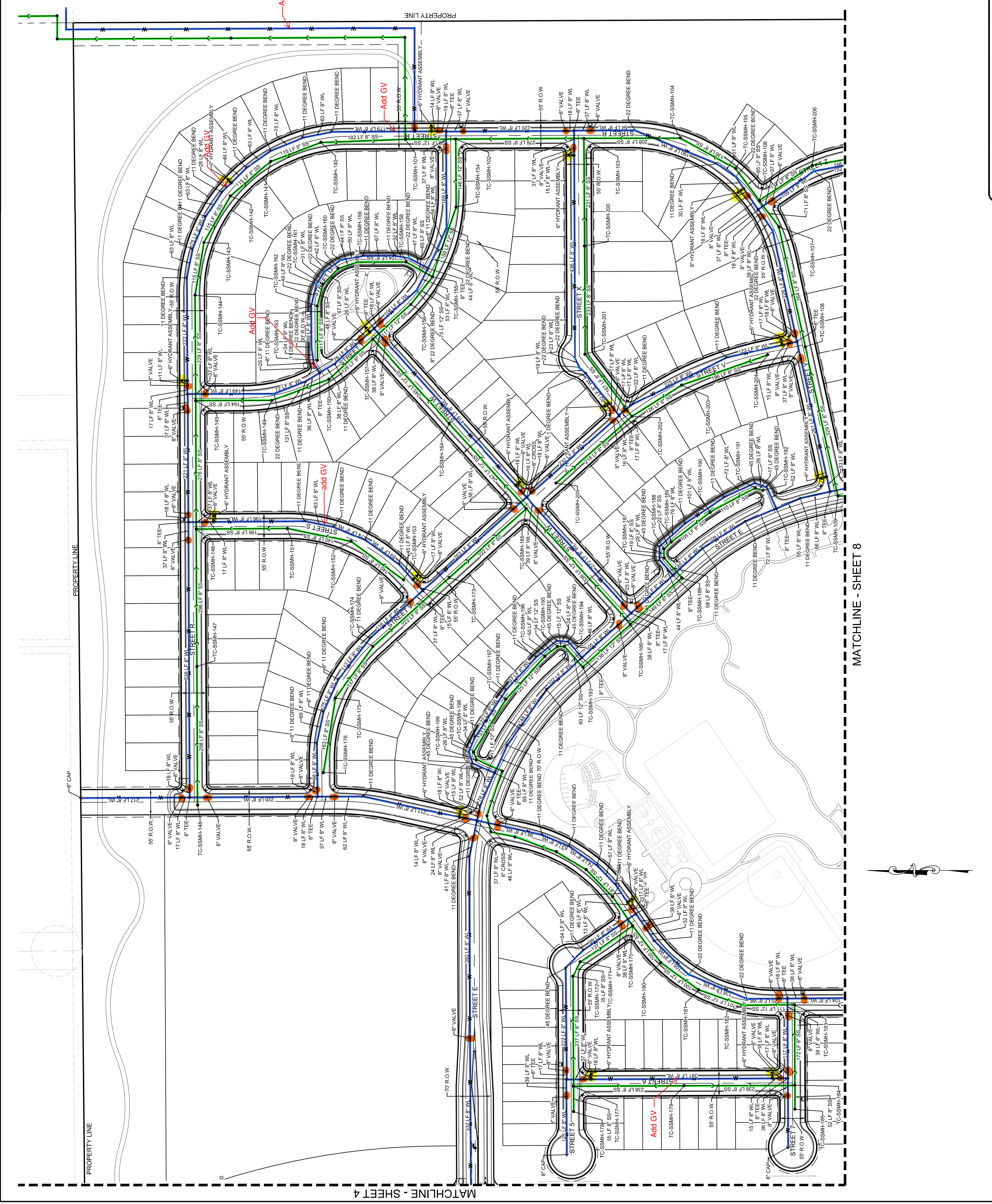
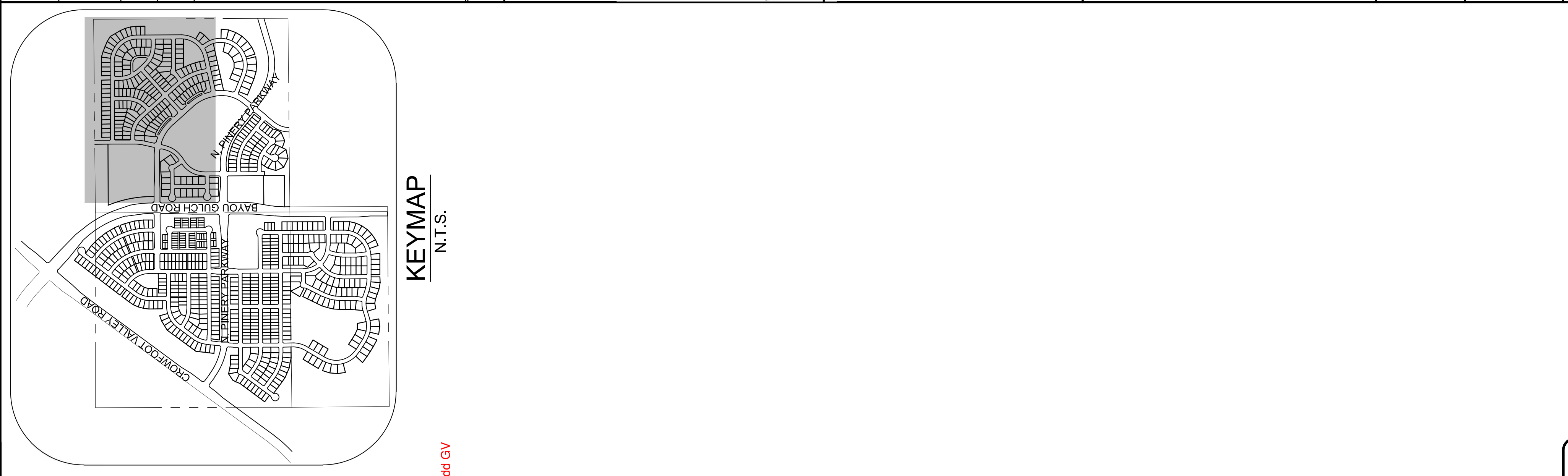
ESX MANAGEMENT  
7363 South Alton Way  
CENTENNIAL, CO 80112

CONSULTANTS  
**CVL**  
10333 E. Dry Creek Rd.  
Suite 240  
Englewood, CO 80112  
Tel: (720) 482-9526  
Fax: (720) 482-9546

NOVEMBER, 2016  
8130283701

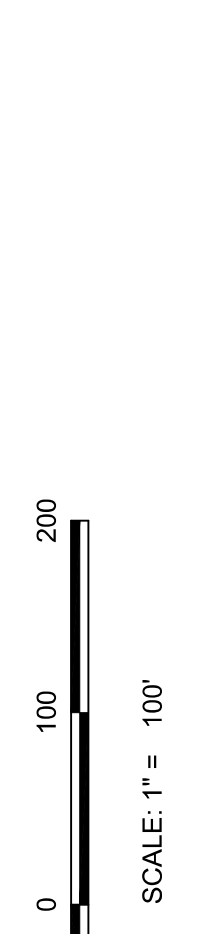
PROJECT SHESS RANCH/DAKOTA/ENGINEERING/SHEETS PRELIMINARY/PARKER WATER AND SANITATION/AREA UTILITY PLAN.DWG, B3MANV, 11/10/2016 3:49 PM

No.	Revisions	Date	Int.	Appr.	Date



BASIS OF BEARINGS:  
THE EAST LINE OF THE NORTHEAST QUARTER OF SAID SECTION 9 BEING MONUMENTED AT THE NORTHEAST CORNER OF SAID SECTION 9 BY A 3-1/4" ALUMINUM CAP STAMPED L.S. 20083 AND AT THE EAST QUARTER CORNER OF SAID SECTION 9 BY A 2-1/2" ALUMINUM CAP STAMPED L.S. 20083, BEING PUBLISHED ON THE SIXTH PRINCIPAL MERIDIAN, HAVING AN ELEVATION OF 1799.2870 METERS (5903.13 FEET) NAVD, '86 DATUM.

SCALE: 1" = 100'

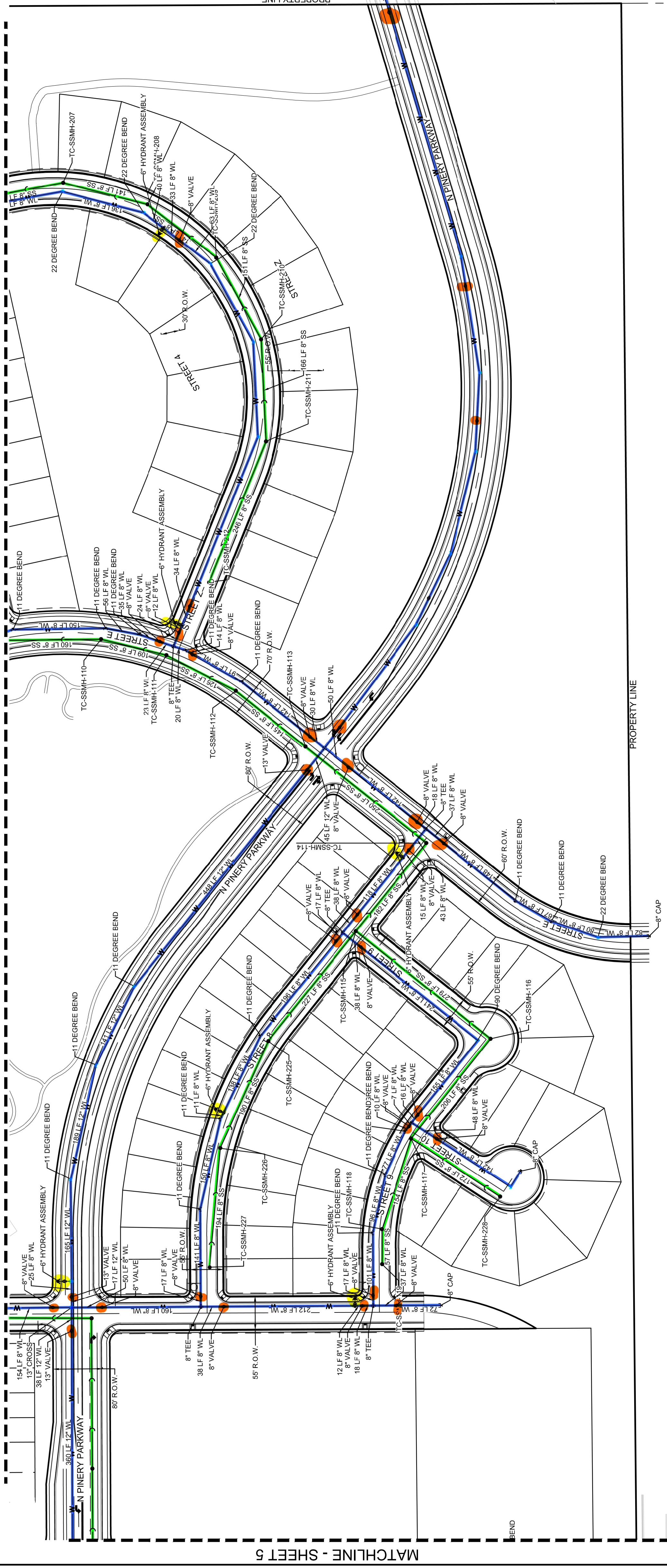


MATCHLINE - SHEET 4

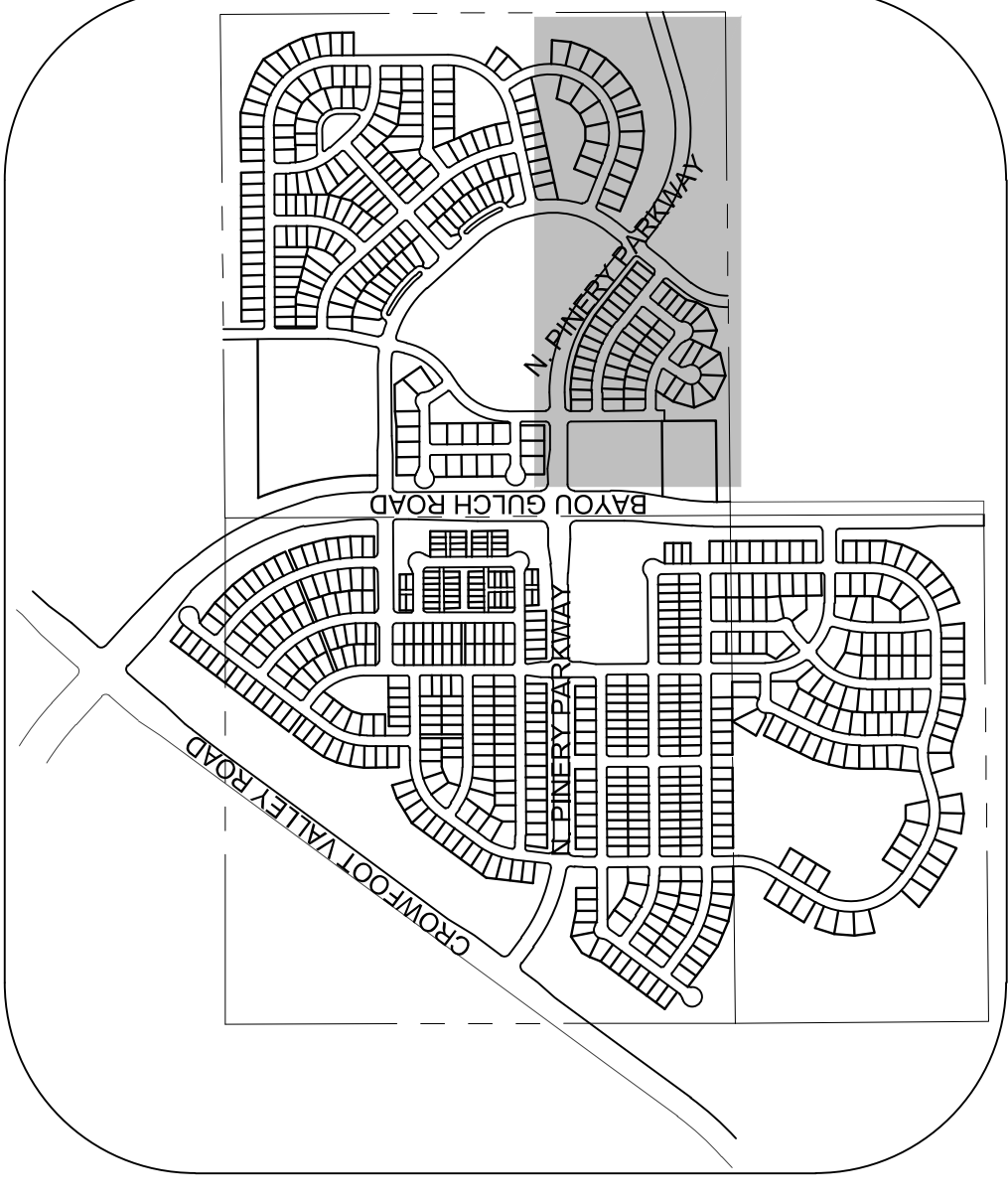
MATCHLINE - SHEET 8

**BENCHMARK**  
DOUGLAS COUNTY CONTROL POINT KNOWN AS 1.060032, BEING A 3-1/4" ALUMINUM CAP, BEING LOCATED IN THE SOUTHWEST QUARTER SECTION 9 BY A 3-1/4" ALUMINUM CAP STAMPED LS 2983 AND AT THE EAST QUARTER CORNER OF SAID SECTION 9 BY A 2-1/2" ALUMINUM CAP, BEING CONSIDERED TO BEAR SOUTH 00°15'06" EAST, 2643.70 FEET.

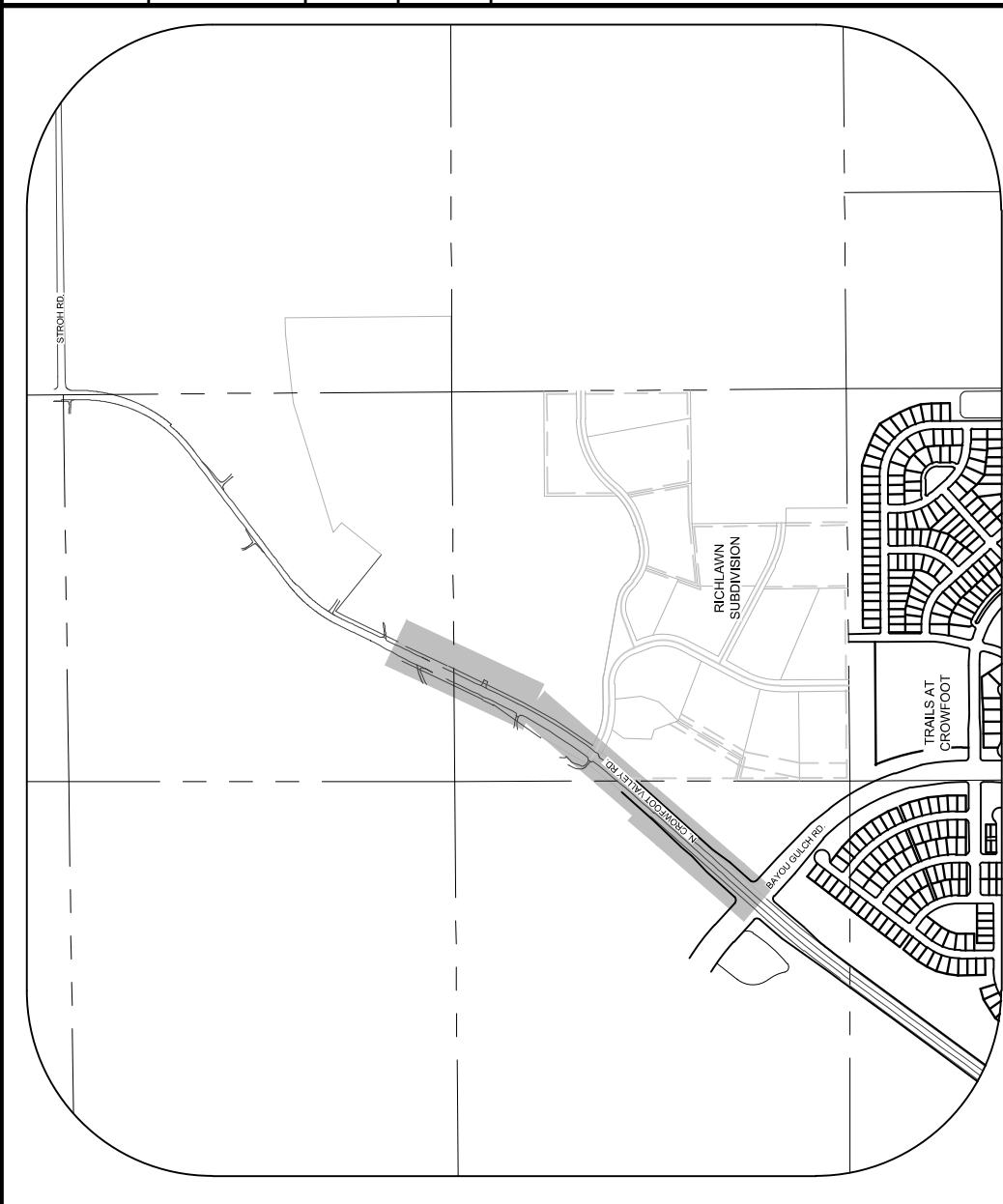
**BASIS OF BEARINGS:**  
THE EAST LINE OF THE NORTHEAST QUARTER OF SAID SECTION 9 BEING MONUMENTED AT THE NORTHEAST CORNER OF SAID SECTION 9 BY A 3-1/4" ALUMINUM CAP STAMPED LS 2983 AND AT THE EAST QUARTER CORNER OF SAID SECTION 9 BY A 2-1/2" ALUMINUM CAP, BEING CONSIDERED TO BEAR SOUTH 00°15'06" EAST, 2643.70 FEET.



**KEYMAP**  
N.T.S.



SHEET NUMBER		8	
DATE:	NOVEMBER, 2016	FILE NO.:	8130283701
CHECKED BY:	JM	AS SHOWN	JLR
DRAWN BY:		SCALE:	
<b>PRELIMINARY CONSTRUCTION DRAWINGS</b>			
<b>TRAILS AT CROWFOOT</b>			
<b>AREA UTILITY PLAN</b>			
ESX MANAGEMENT 7353 South Alton Way CENTENNIAL, CO 80112		<b>CONSULTANTS</b>	
10333 E. Dry Creek Rd. Suite 240 Englewood, CO 80112 Tel: (720) 482-9526 Fax: (720) 482-9546			
No.	Revisions	Date	Appr.

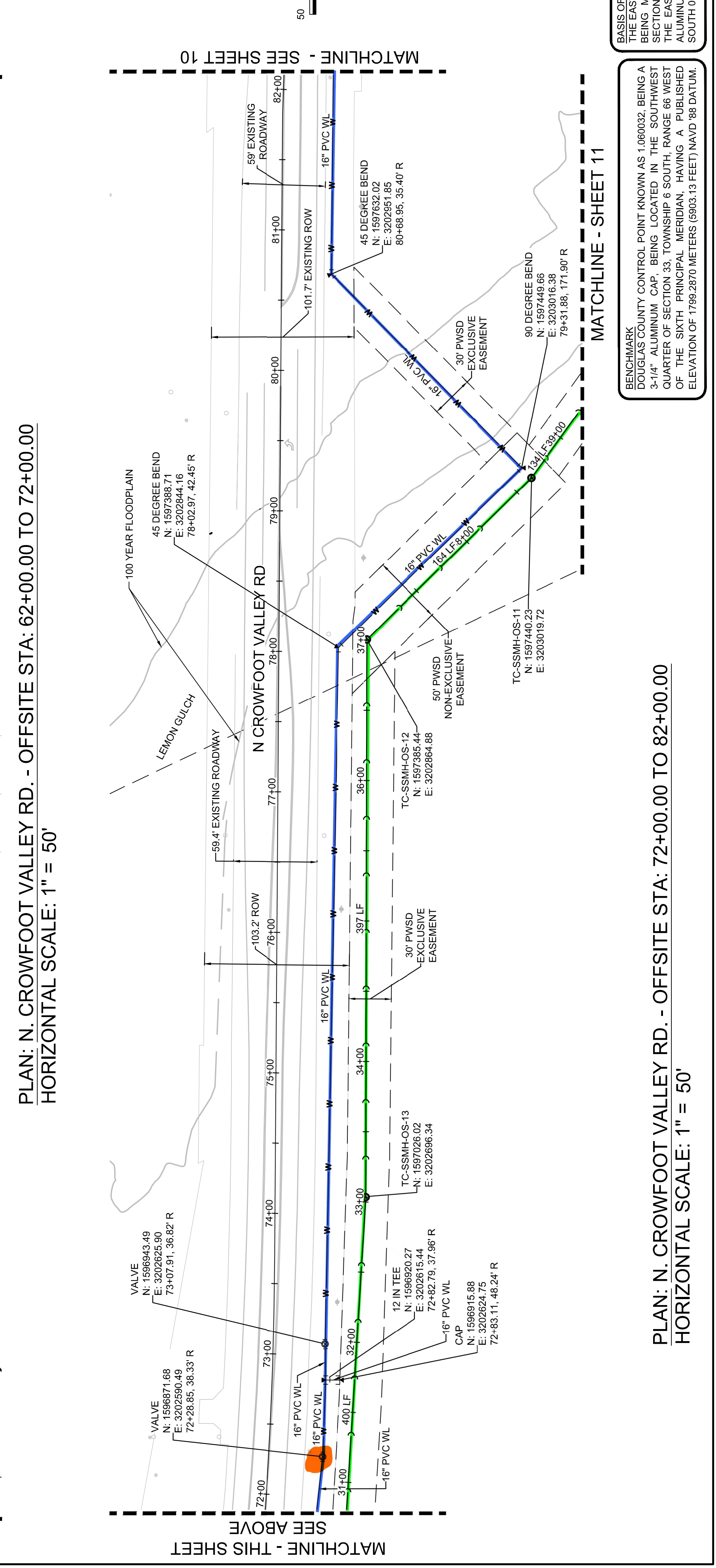
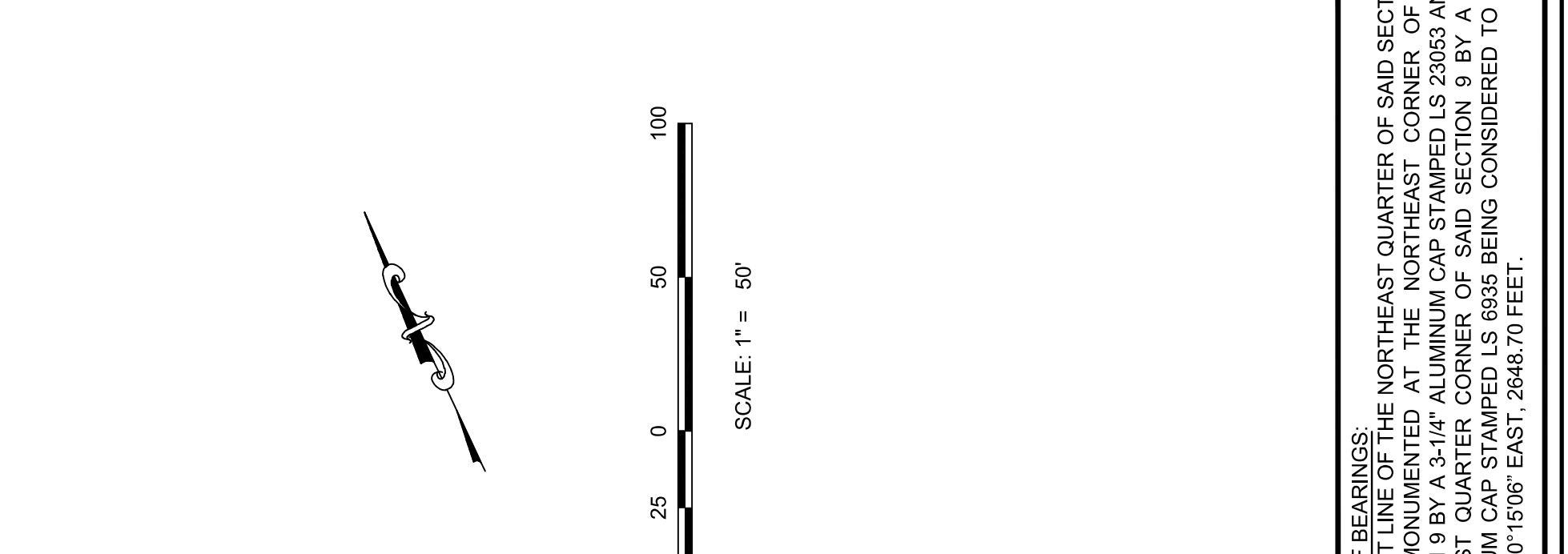
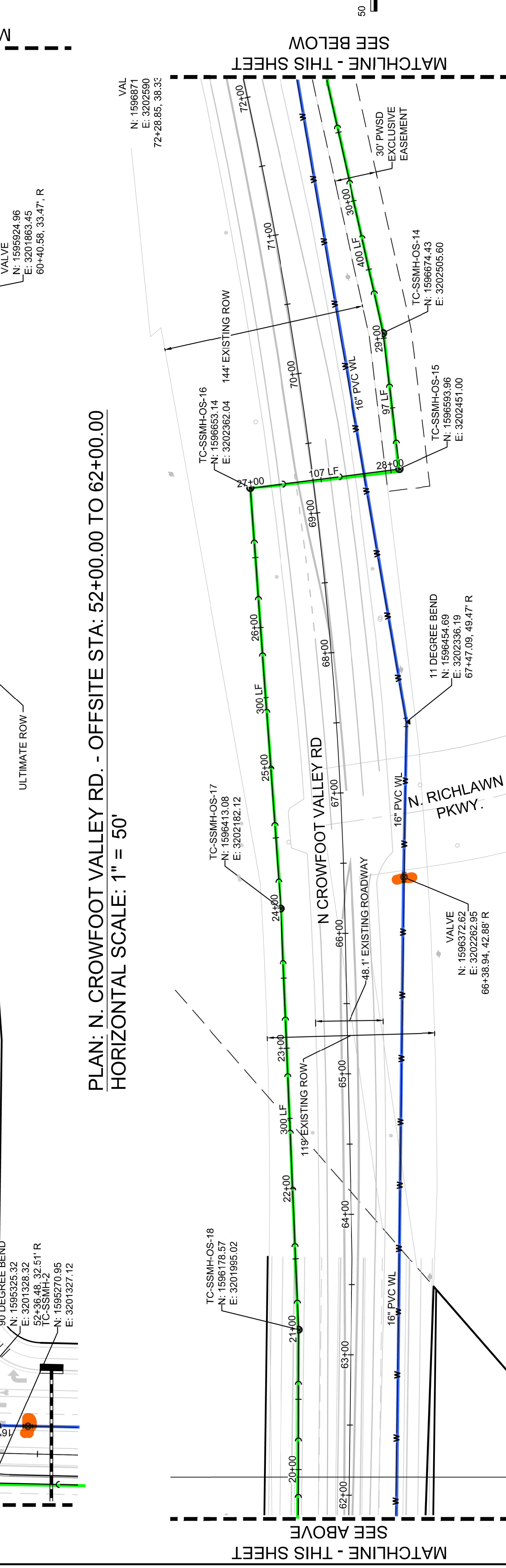
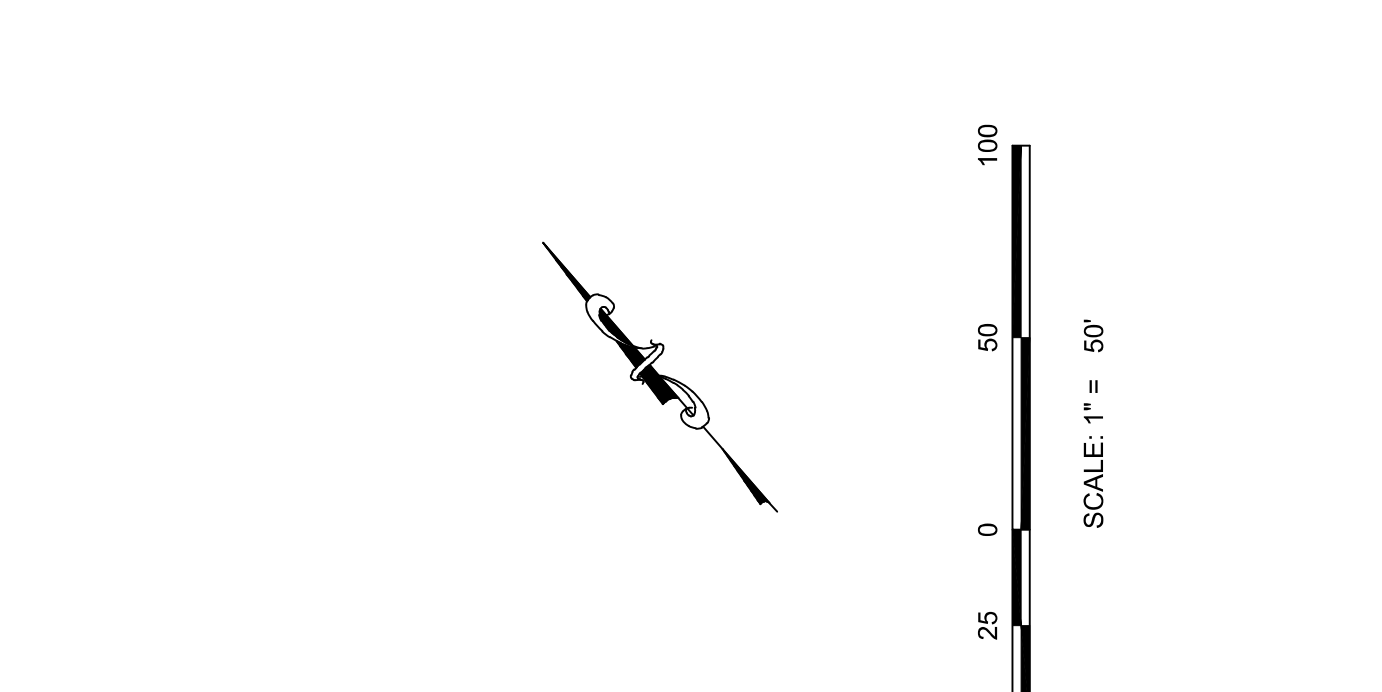
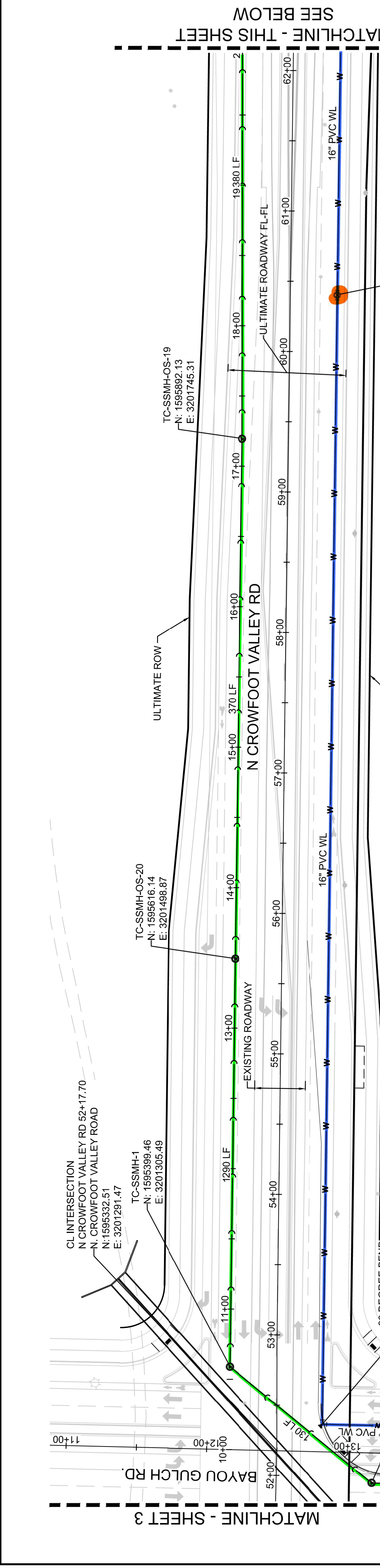
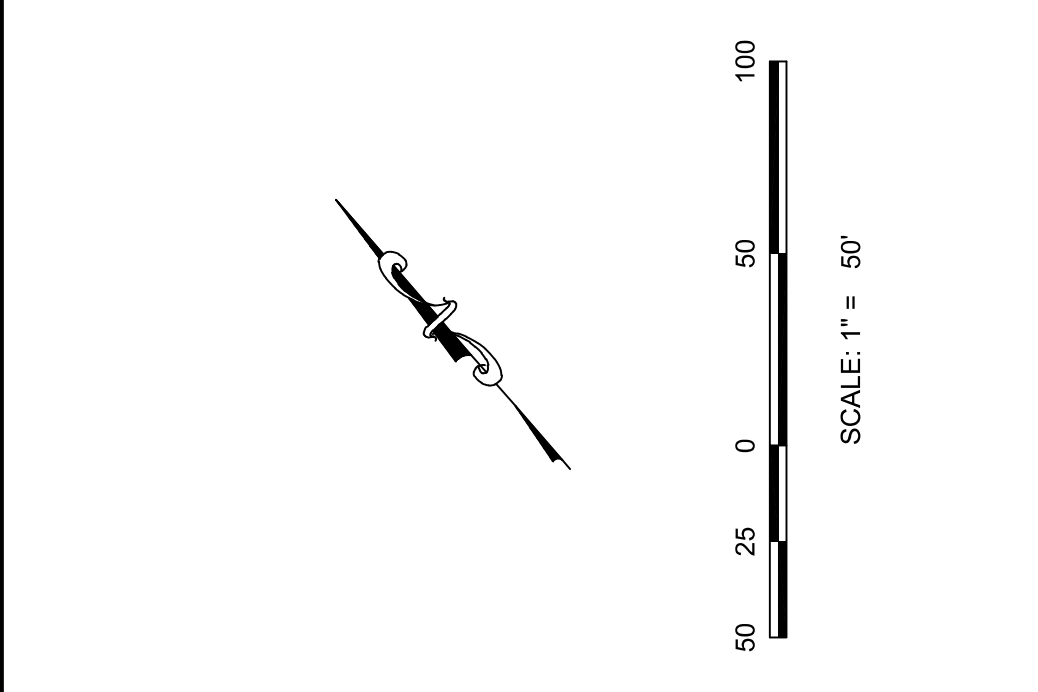


**LEGEND**

Ⓜ	BLOCK NUMBER	△	PROPOSED RANGE POINT
Ⓜ	LOT TYPE	---	CENTERLINE
Ⓜ	LOT NUMBER	---	RIGHT-OF-WAY
Ⓜ	VALVE	---	PROPERTY LINE
Ⓜ	PROPOSED BUTTERFLY VALVE	---	EDGE OF PAVEMENT
Ⓜ	PROPOSED CAP WITH END OF LINE BLOWOFF	---	PROPOSED DIRECTION OF FLOW
Ⓜ	PROPOSED REDUCER	---	PROPOSED SLOPE & DIRECTION
Ⓜ	PROPOSED VALVE	---	EXISTING 5' CONTOUR
Ⓜ	PROPOSED FIRE HYDRANT	---	EXISTING 1' CONTOUR
Ⓜ	PROPOSED WL FITTING WITH THRUST BLOCK	---	PROPOSED 5' CONTOUR
Ⓜ	END SECTION	---	PROPOSED 1' CONTOUR
Ⓜ	PROPOSED FLARED POINT BLOW-OFF	---	PROPOSED STORM DRAIN
Ⓜ	PROPOSED AIR VALVE	---	PROPOSED SEWER LINE WITH MANHOLE
Ⓜ	EXISTING BLOW OFF VALVE	---	PROPOSED LATERAL SEWER
Ⓜ	EXISTING VALVE	---	PROPOSED WATER LINE
Ⓜ	EXISTING FIRE HYDRANT	---	PROPOSED WATER LATERAL
Ⓜ	PROPOSED LIGHT POLE	---	PROPOSED WATER METER
Ⓜ	PROPOSED SIDEWALK RAMP	---	EXISTING 60" RAW WATER LINE
Ⓜ	EXISTING ELEVATION	---	SECTION LINE
Ⓜ	PROPOSED DESIGN ELEVATION	---	FILING BOUNDARY
Ⓜ	PROPOSED STORM DRAIN INLET	---	EXISTING FIBER OPTIC LINE
Ⓜ	PROPOSED STORM DRAIN MANHOLE	---	EXISTING OVERHEAD HIGH VOLTAGE LINE
Ⓜ		---	EXISTING TELEPHONE LINE

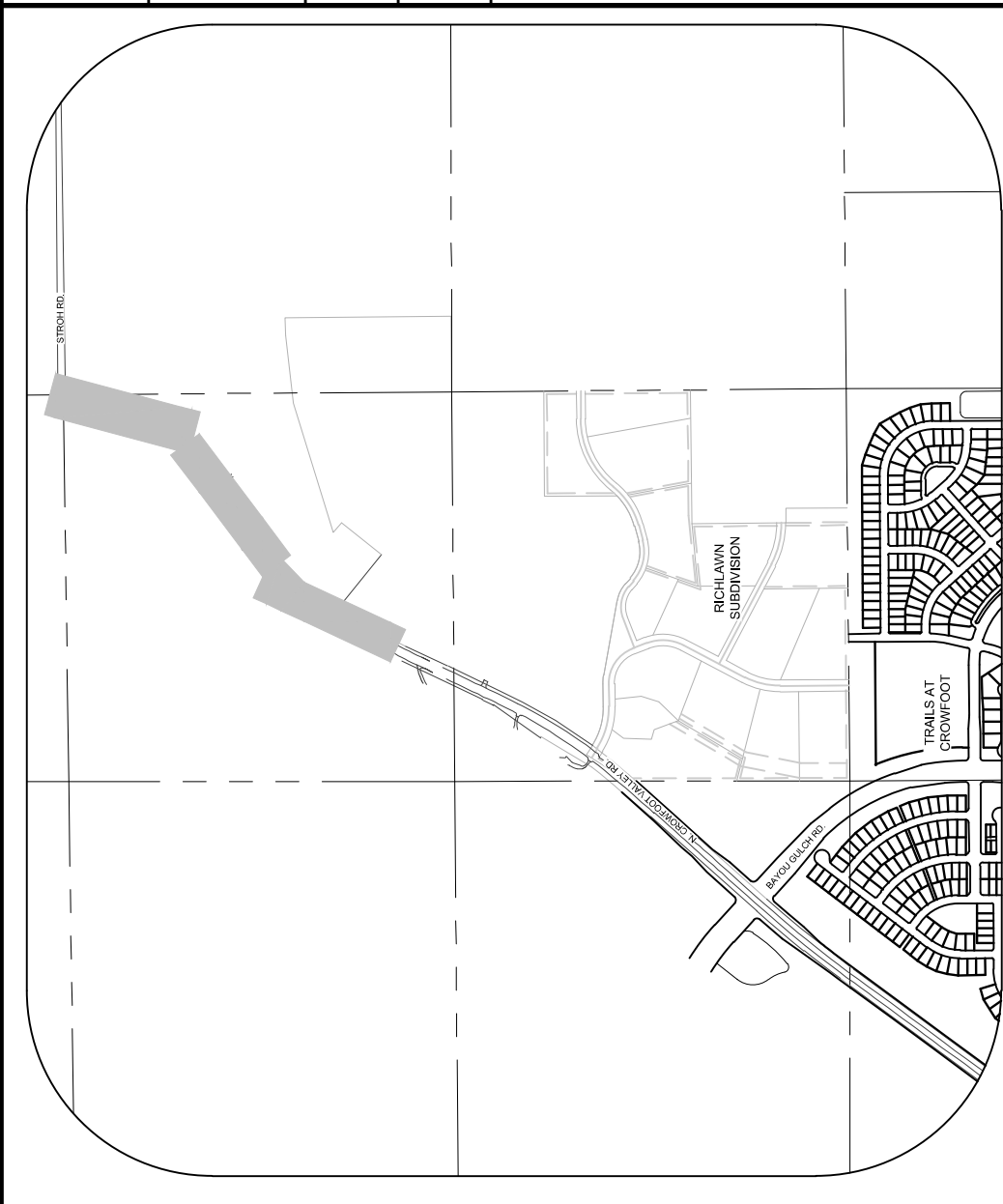
**ABBREVIATIONS**

AD	ANGLE DIFFERENCE	PVC	POLYVINYL CHLORIDE
BVC	BEGIN VERTICAL CURVE	PVI	POINT OF VERTICAL INTERSECTION
CRR	CURVE RETURN RADIUS	RCBC	REINFORCED CONCRETE BOX CULVERT
EL	ELEVATION	RCP	REINFORCED CONCRETE PIPE
ELP	EDGE OF PAVEMENT	ROW	RIGHT OF WAY
EVP	END VERTICAL CURVE	SD	STORM DRAIN
FG	FINISHED GROUND	SL	SECTION LINE
FL	FLOW LINE	SS	SANITARY SEWER
HP	HIGH POINT	TC	TOP OF CURB
INV	INVERT	T.O.S.	TOP OF PIPE
K	CURVATURE COEFFICIENT	UE	UTILITY EASEMENT
LF	LINEAR FEET	VC	VERTICAL CURVE
MH	MANHOLE	WL	WATER LINE
N.T.S.	NOT TO SCALE	WSE	WATER SURFACE ELEVATION
PL	PROPERTY LINE		



**BASIS OF BEARINGS:**  
 THE EAST LINE OF THE NORTHEAST QUARTER OF SAID SECTION 9 BEING MONUMENTED AT THE NORTHEAST CORNER OF SAID SECTION 9 BY A 3-1/4" ALUMINUM CAP STAMPED L.S. 20083 AND AT THE EAST QUARTER CORNER OF SAID SECTION 9 BY A 2-1/2" ALUMINUM CAP STAMPED L.S. 20083. BEING CONSIDERED TO BEAR SOUTH 00°15'06" EAST, 2643.70 FEET.

**BENCHMARK:**  
 DOUGLAS COUNTY CONTROL POINT KNOWN AS 1.060032, BEING A 3-1/4" ALUMINUM CAP, BEING LOCATED IN THE SOUTHWEST QUARTER SECTION 9, T11N, R10E, S40E, RANGE 10E, PUBLISHED BY THE STATE OF COLORADO, BEING CONSIDERED TO BEAR AN ELEVATION OF 1799.2870 METERS (5903.13 FEET) M.A.S.D. '88 DATUM.

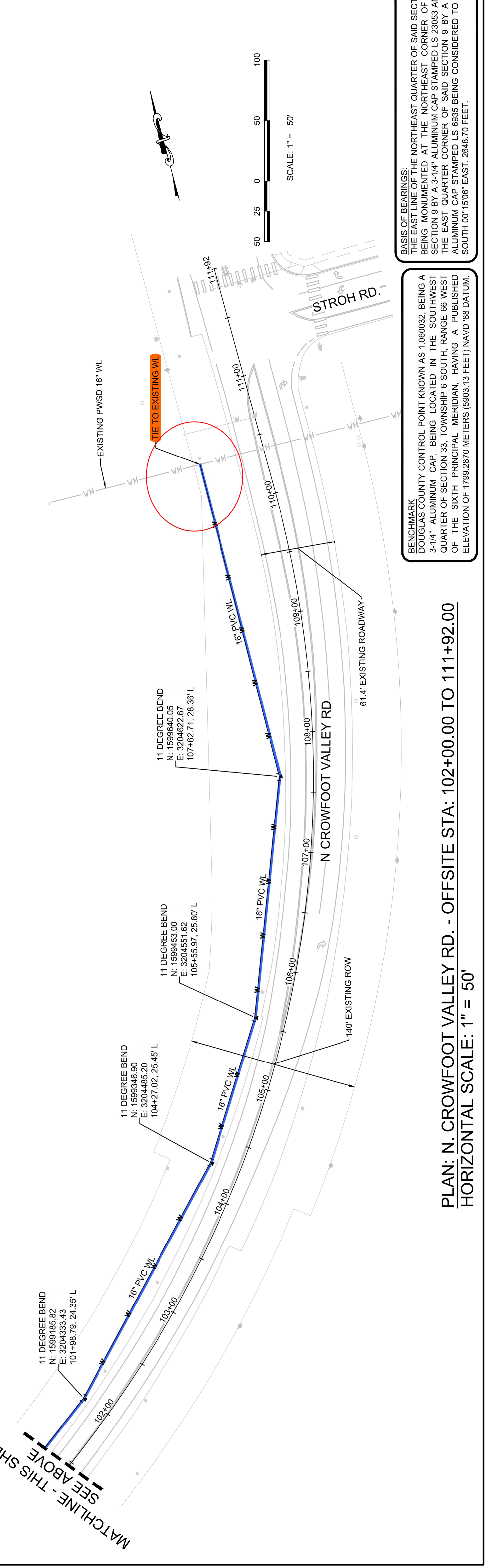
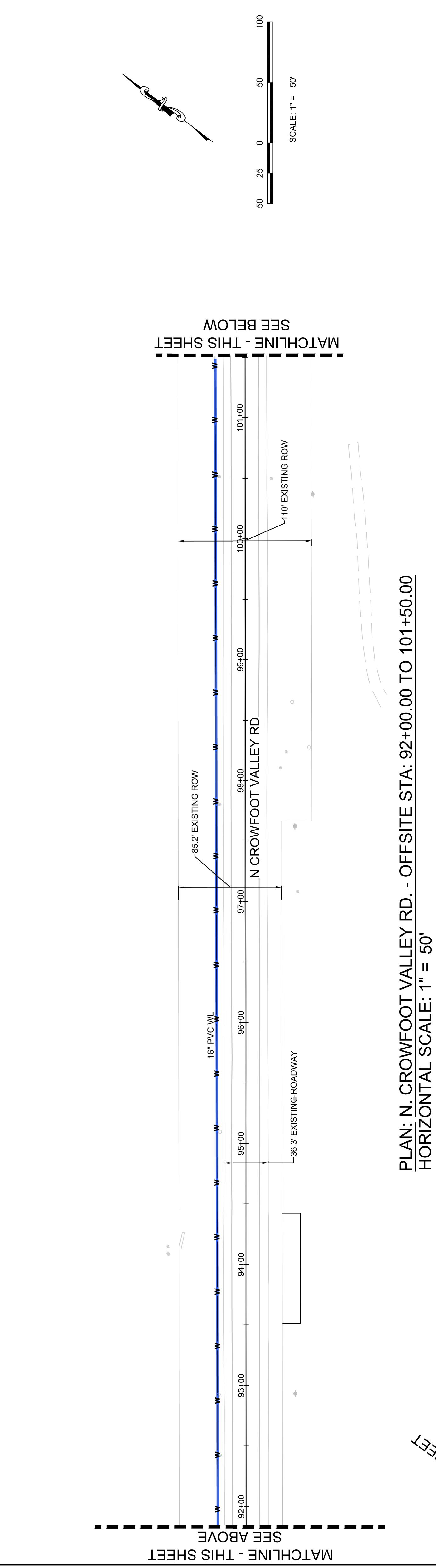
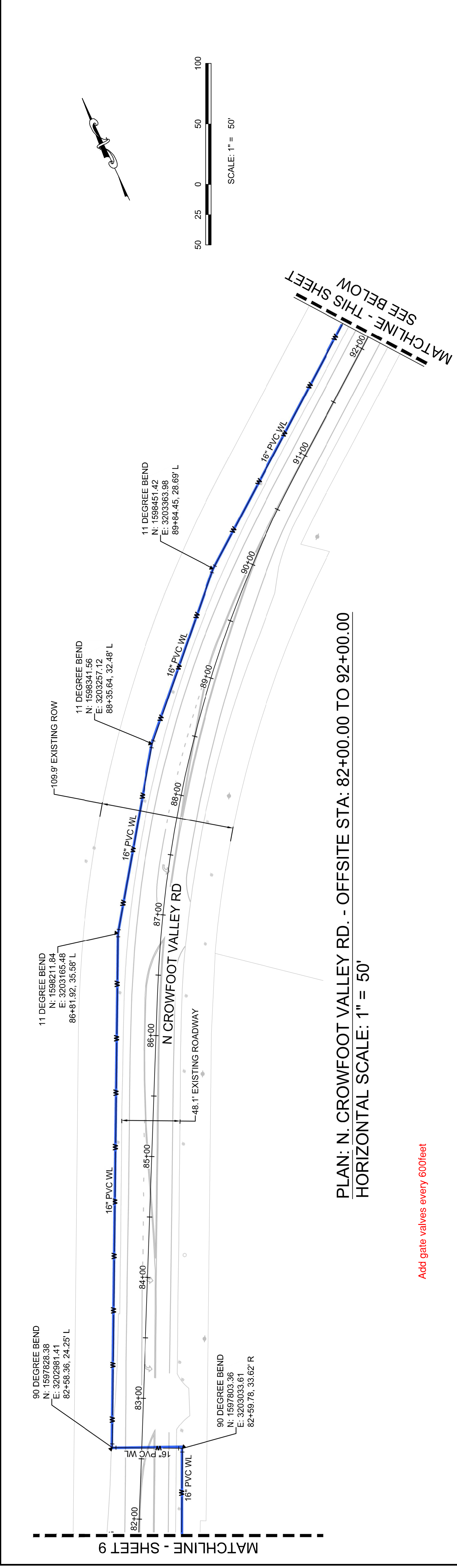


**LEGEND**  
N.T.S.

Ⓜ	BLOCK NUMBER	△	PROPOSED RANGE POINT
Ⓜ	LOT TYPE	---	CENTERLINE
Ⓜ	LOT NUMBER	---	RIGHT-OF-WAY
Ⓜ	PROPOSED BUTTERFLY VALVE	---	PROPERTY LINE
Ⓜ	PROPOSED CAP WITH END OF LINE BLOWOFF	---	EDGE OF PAVEMENT
Ⓜ	PROPOSED REDUCER	---	PROPOSED DIRECTION OF FLOW
Ⓜ	PROPOSED VALVE	---	PROPOSED SLOPE & DIRECTION
Ⓜ	PROPOSED FIRE HYDRANT	---	EXISTING 5' CONTOUR
Ⓜ	PROPOSED WL FITTING WITH THRUST BLOCK	---	EXISTING 1' CONTOUR
Ⓜ	PROPOSED FLARED END SECTION	---	PROPOSED 5' CONTOUR
Ⓜ	PROPOSED LOW POINT BLOW-OFF	---	PROPOSED 1' CONTOUR
Ⓜ	PROPOSED AIR VALVE	---	PROPOSED STORM DRAIN
Ⓜ	EXISTING BLOW OFF VALVE	---	PROPOSED SEWER LINE WITH MANHOLE
Ⓜ	EXISTING VALVE	---	PROPOSED SEWER LATERAL
Ⓜ	EXISTING FIRE HYDRANT	---	PROPOSED WATER LINE
Ⓜ	PROPOSED LIGHT POLE	---	PROPOSED 60" RAW WATER LINE
Ⓜ	PROPOSED SIDEWALK RAMP	---	SECTION LINE
Ⓜ	EXISTING ELEVATION	---	FILING BOUNDARY
Ⓜ	PROPOSED DESIGN ELEVATION	---	EXISTING FIBER OPTIC LINE
Ⓜ	PROPOSED STORM DRAIN INLET	---	EXISTING OVERHEAD HIGH VOLTAGE LINE
Ⓜ	PROPOSED STORM DRAIN MANHOLE	---	EXISTING TELEPHONE LINE

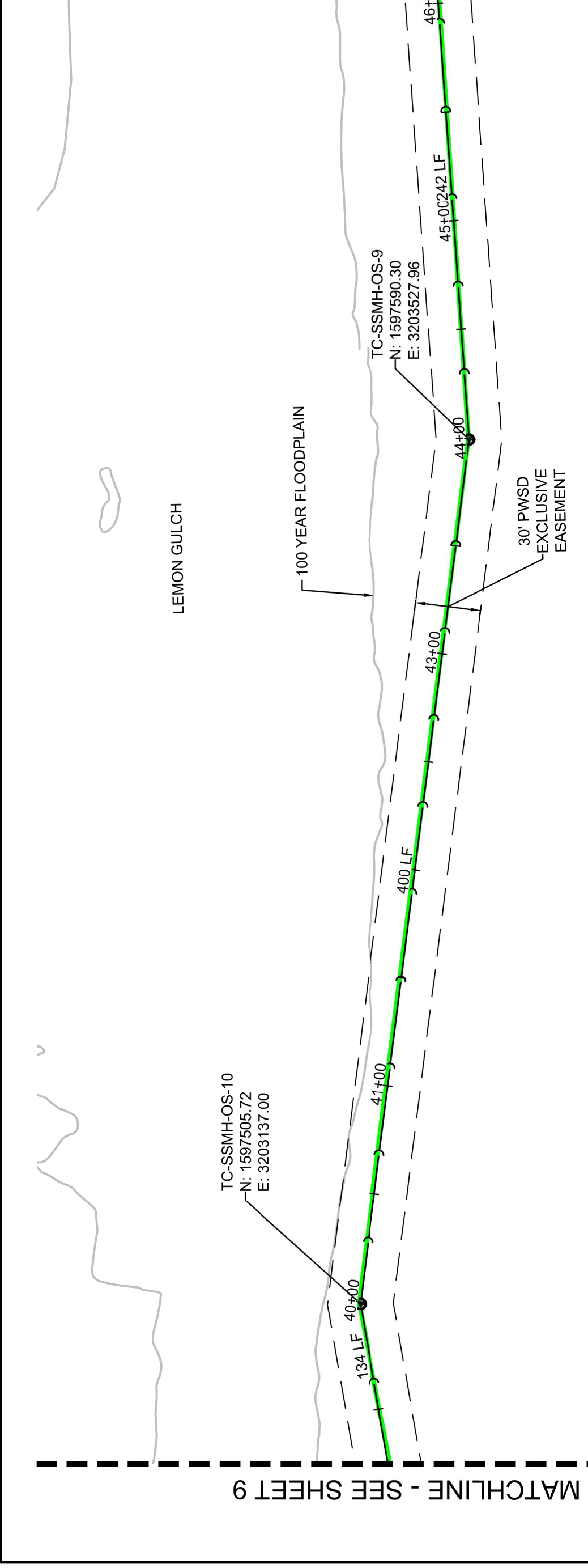
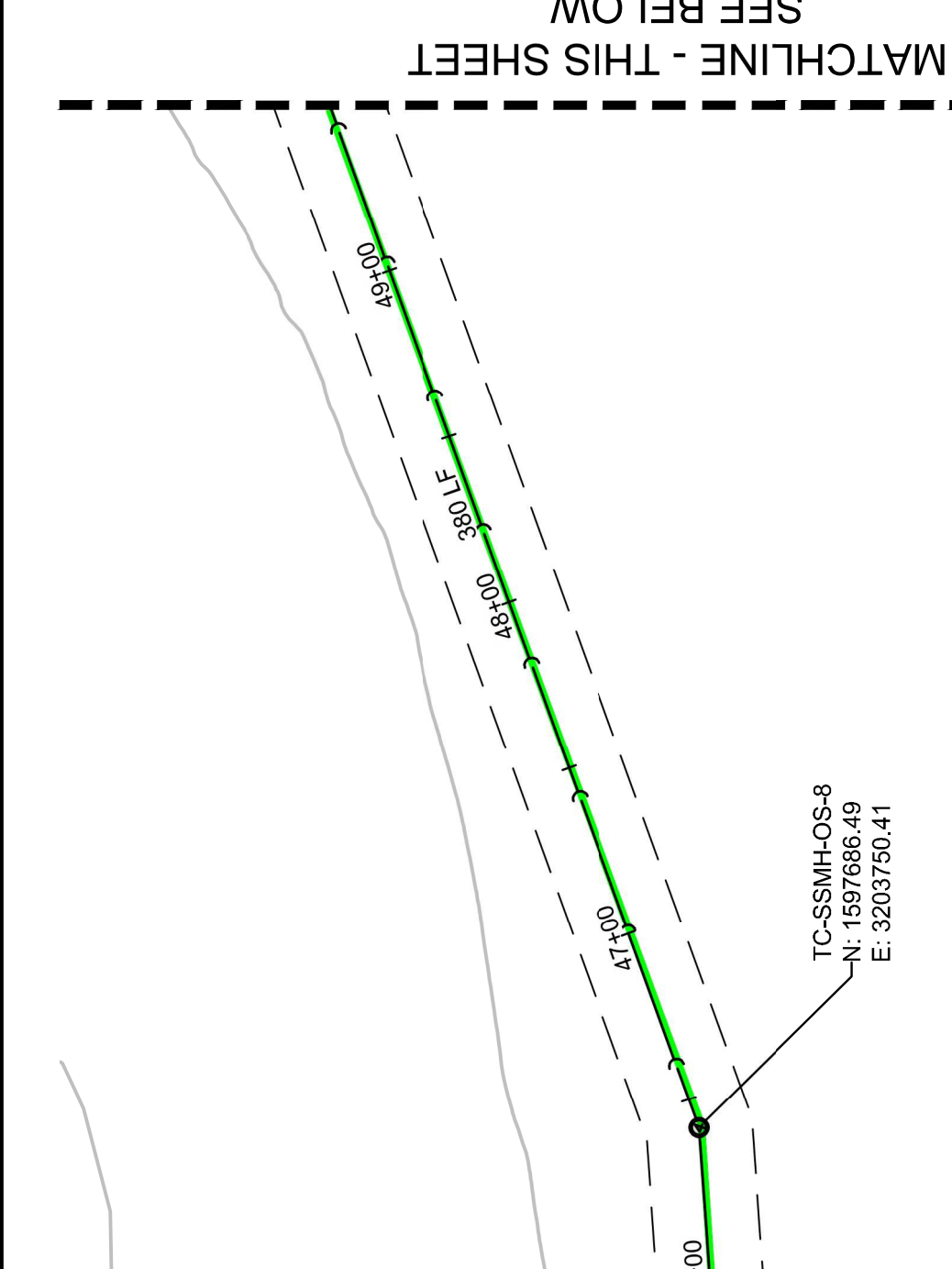
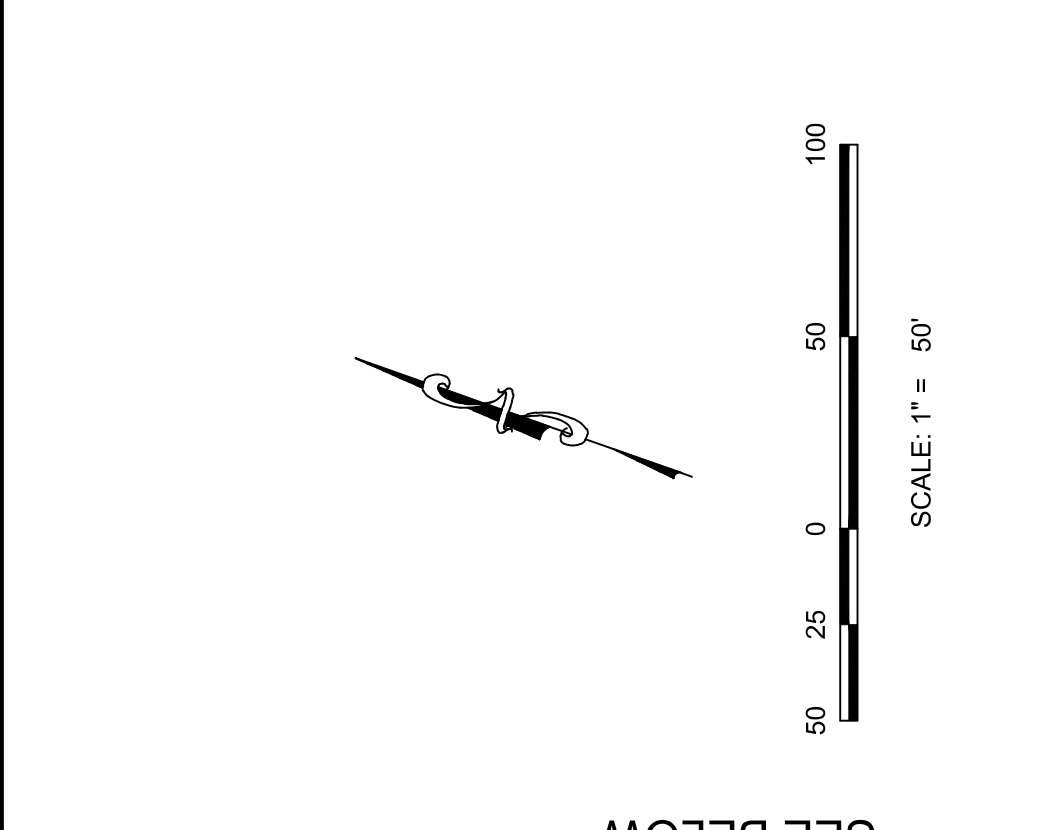
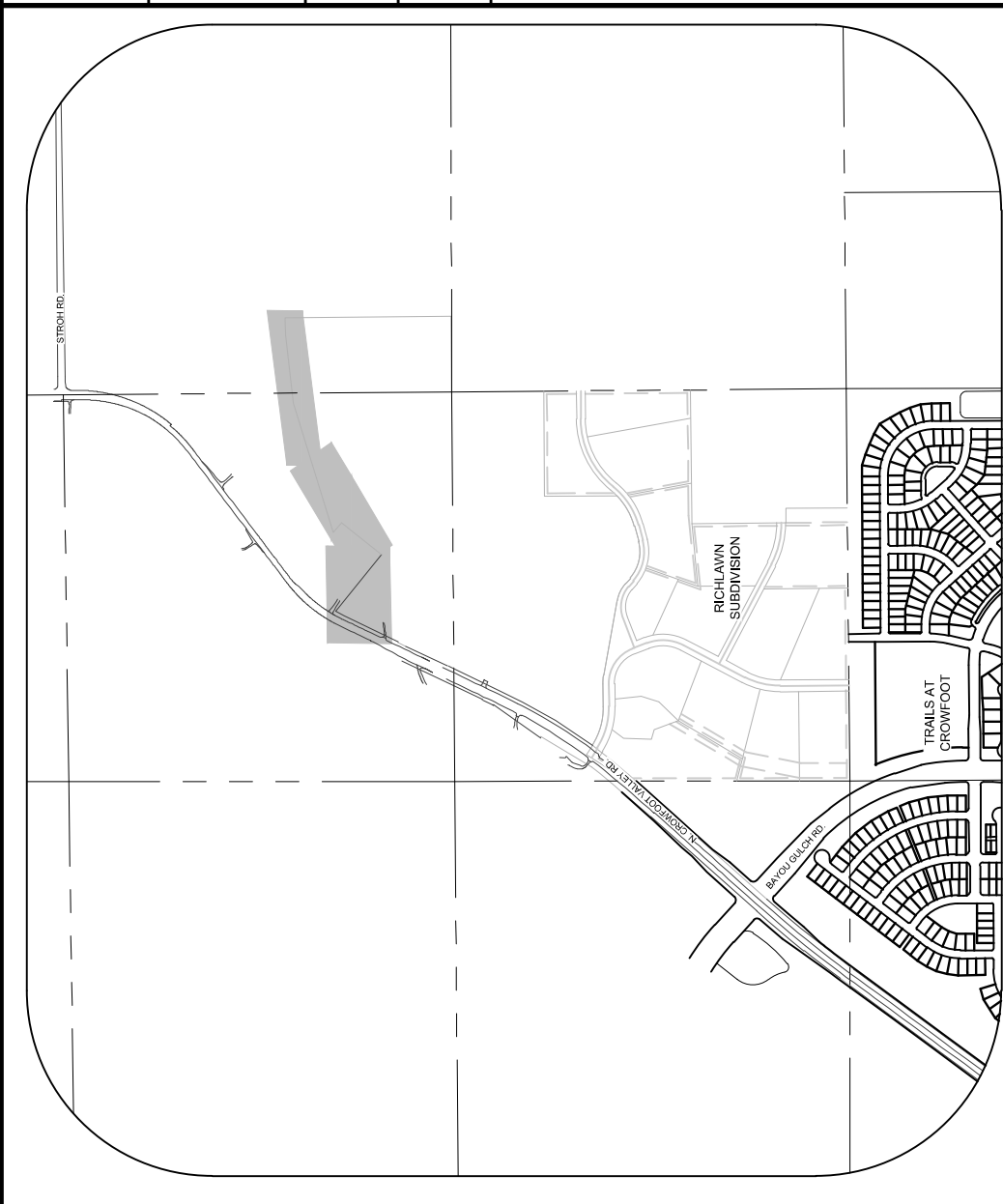
**ABBREVIATIONS**

AD	ANGLE DIFFERENCE	PVC	POLYVINYL CHLORIDE
BVC	BEGIN VERTICAL CURVE	PVI	PT OF VERTICAL INTERSECTION
BVP	BEGIN VERTICAL PROFILE	PVT	POINT OF VERTICAL TANGENT
CRR	CURVE RETURN RADIUS	RCBC	REINFORCED CONCRETE BOX CULVERT
EL	ELEVATION	RCP	REINFORCED CONCRETE PIPE
EP	EDGE OF PAVEMENT	ROW	RIGHT OF WAY
EVC	END VERTICAL CURVE	SD	STORM DRAIN
EVP	END VERTICAL PROFILE	SL	SECTION LINE
FG	FINISHED GROUND	SS	SANITARY SEWER
FL	FLOW LINE	TA	TOP OF CURB
HP	HIGH POINT	T.O.S.	TOP OF PIPE
INV	INVERT	UE	UTILITY EASEMENT
K	CURVATURE COEFFICIENT	VC	VERTICAL CURVE
LF	LINEAR FEET	WL	WATER LINE
MH	MANHOLE	WSE	WATER SURFACE ELEVATION
N.T.S.	NOT TO SCALE		
PL	PROPERTY LINE		



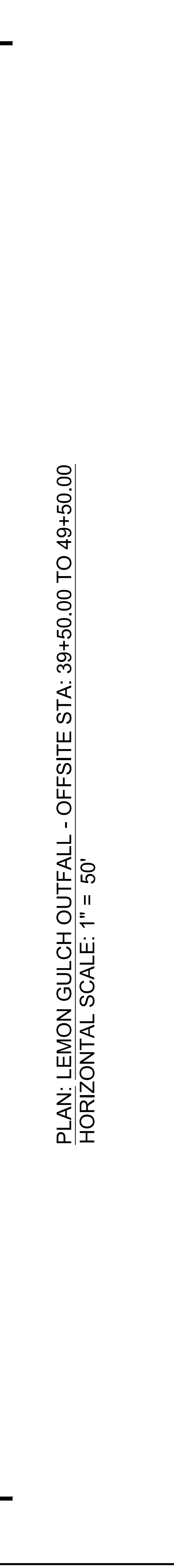
**BENCHMARK:**  
 DOUGLAS COUNTY CONTROL POINT KNOWN AS 1.060002, BEING A 3-1/4" ALUMINUM CAP, BEING LOCATED IN THE SOUTHWEST QUARTER CORNER OF SAID SECTION 9 BY A 2-1/2" OF THE SIXTH PRINCIPAL MERIDIAN SURVEY, PUBLISHED ELEVATION OF 1799.2870 METERS (5903.13 FEET) (NAD 83 DATUM).

**BASIS OF BEARINGS:**  
 THE EAST LINE OF THE NORTHEAST QUARTER OF SAID SECTION 9 BEING MONUMENTED AT THE NORTHEAST CORNER OF SAID SECTION 9 BY A 3-1/4" ALUMINUM CAP STAMPED LS 2983 AND AT THE EAST QUARTER CORNER OF SAID SECTION 9 BY A 2-1/2" SOUTH 00°15'06" EAST, 2643.70 FEET.

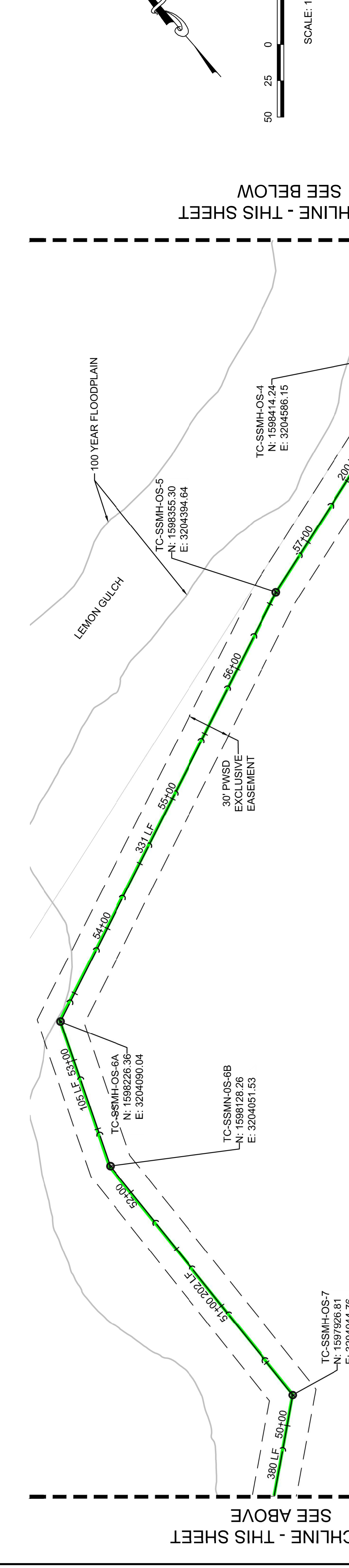
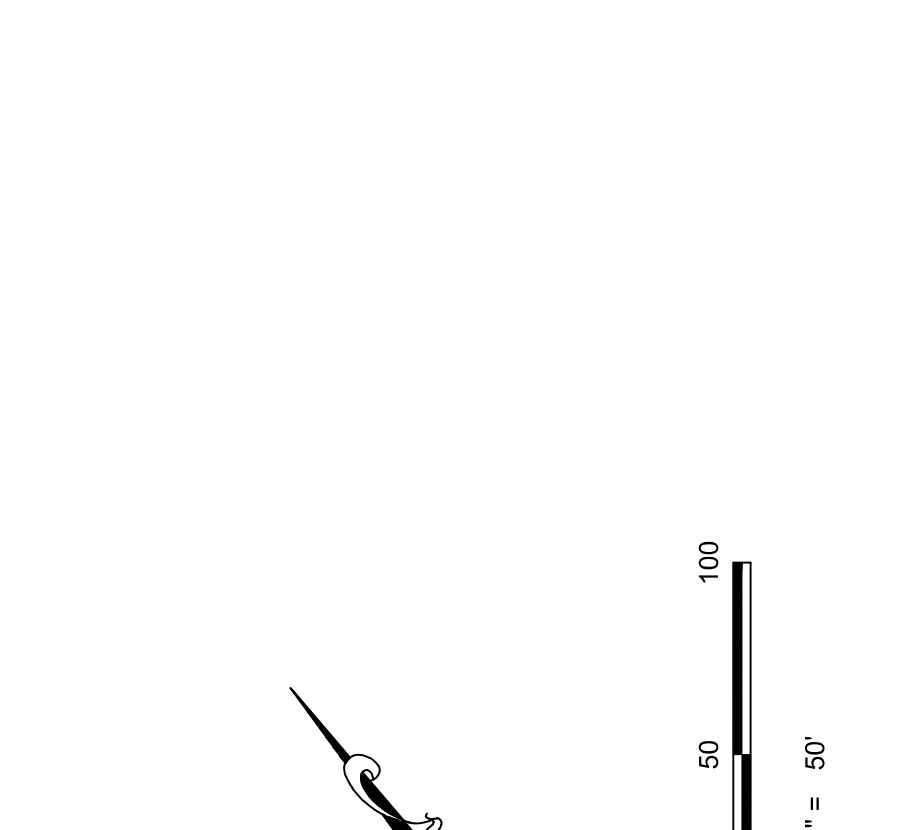
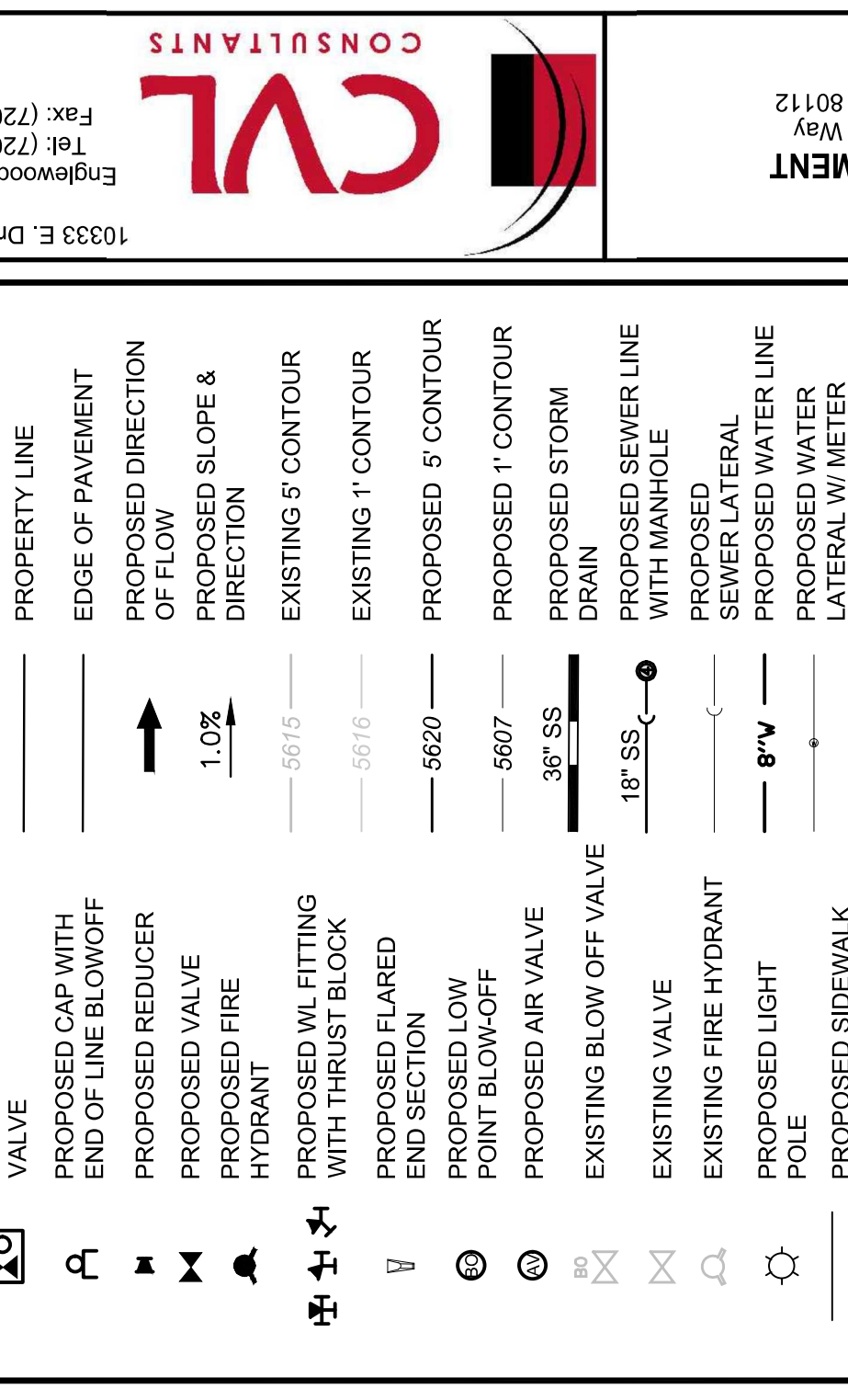


ESX MANAGEMENT  
 7363 South Alton Way  
 CENTENNIAL, CO 80112  
 10333 E. Dry Creek Rd.  
 Suite 240  
 Englewood, CO 80112  
 Tel: (720) 482-9526  
 Fax: (720) 482-9546  
**CVL**  
**CONSULTANTS**

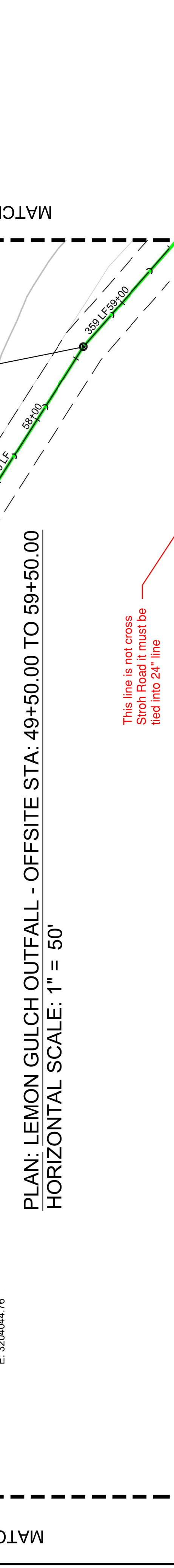
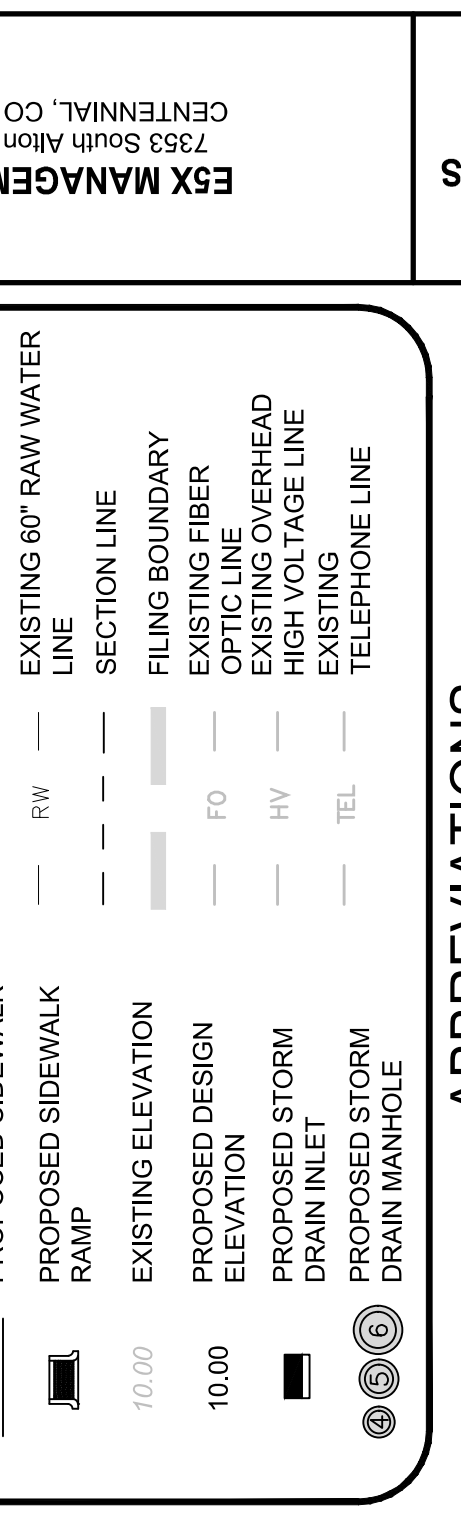
DATE: 11/10/2016  
 FILE NO: 8130283701  
 AS SHOWN  
 SCALE: 1" = 50'  
 DRAWN BY: JLR  
 CHECKED BY: JM  
 DATE: 11/10/2016



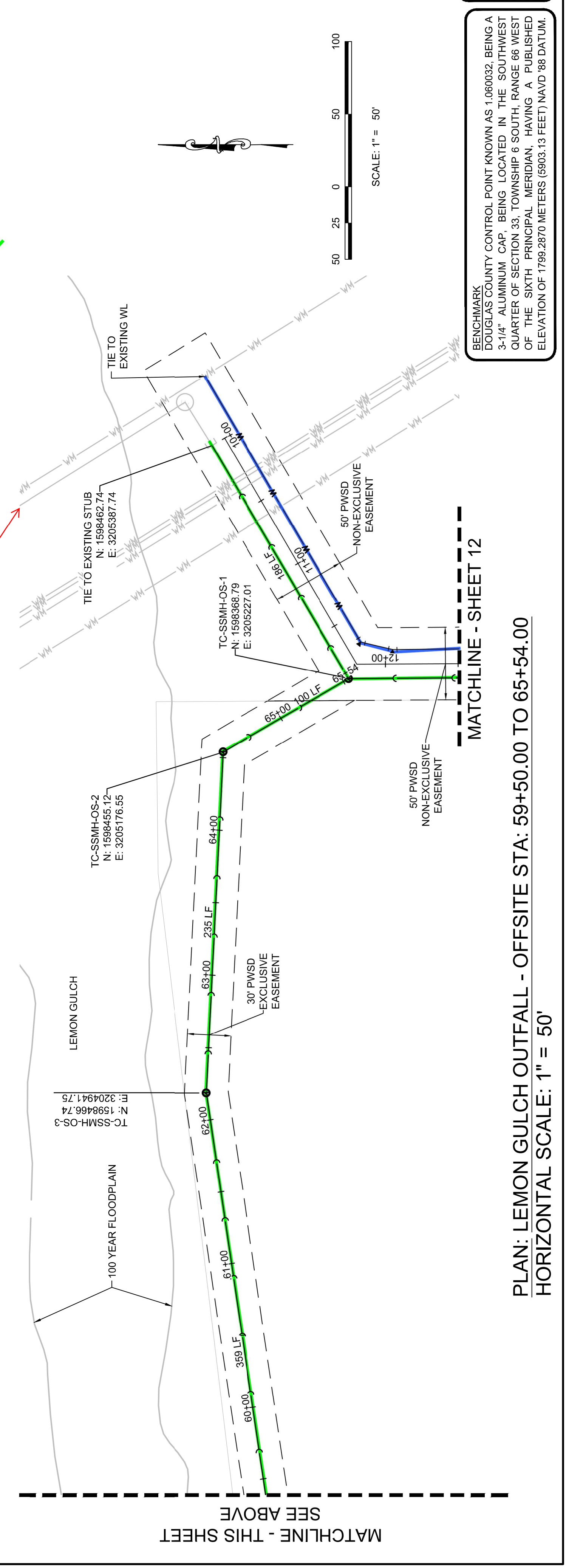
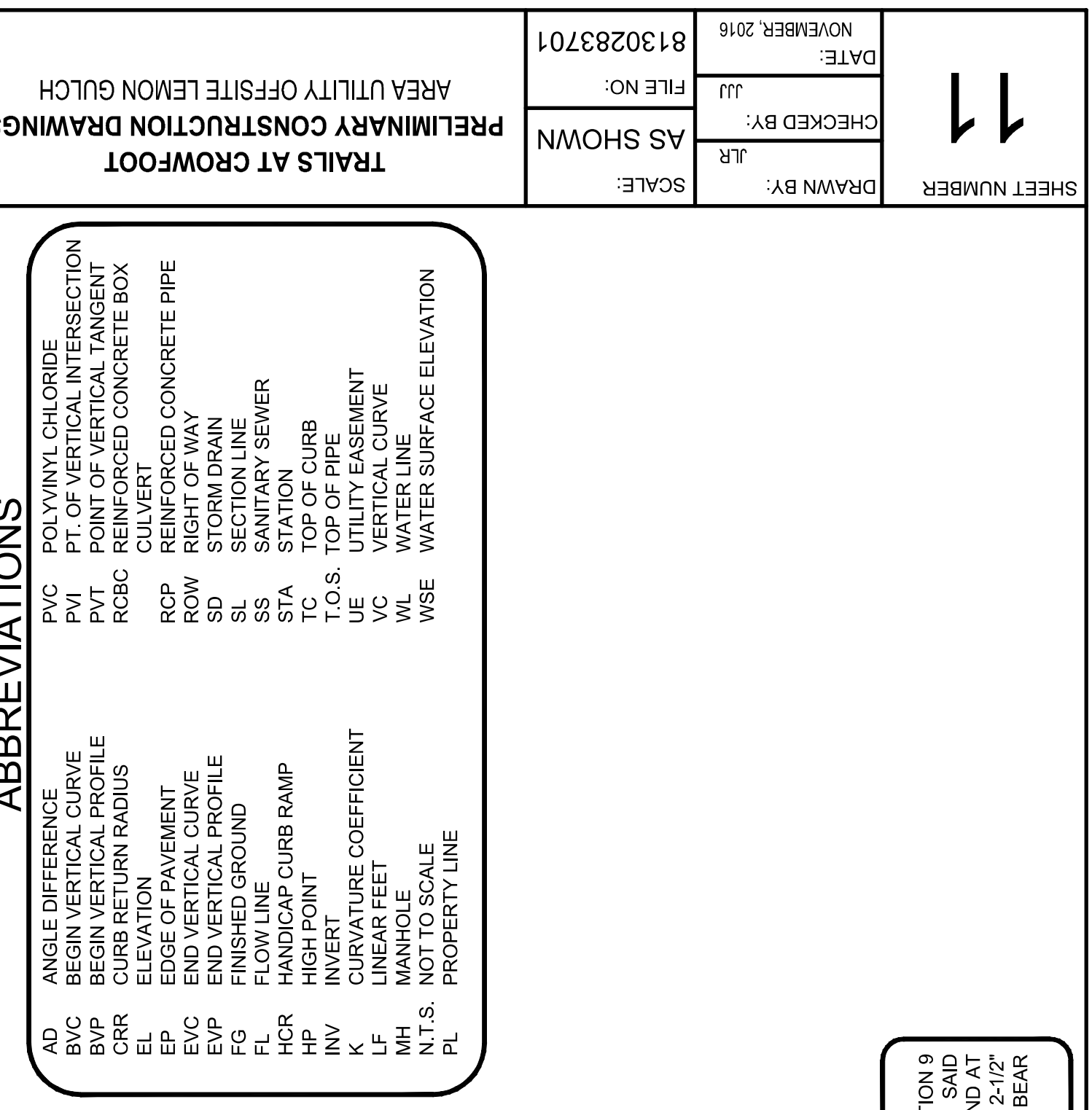
PLAN: LEMON GULCH OUTFALL - OFFSITE STA: 39+50.00 TO 49+50.00  
 HORIZONTAL SCALE: 1" = 50'



PLAN: LEMON GULCH OUTFALL - OFFSITE STA: 59+50.00 TO 65+54.00  
 HORIZONTAL SCALE: 1" = 50'



PLAN: LEMON GULCH OUTFALL - OFFSITE STA: 59+50.00 TO 65+54.00  
 HORIZONTAL SCALE: 1" = 50'



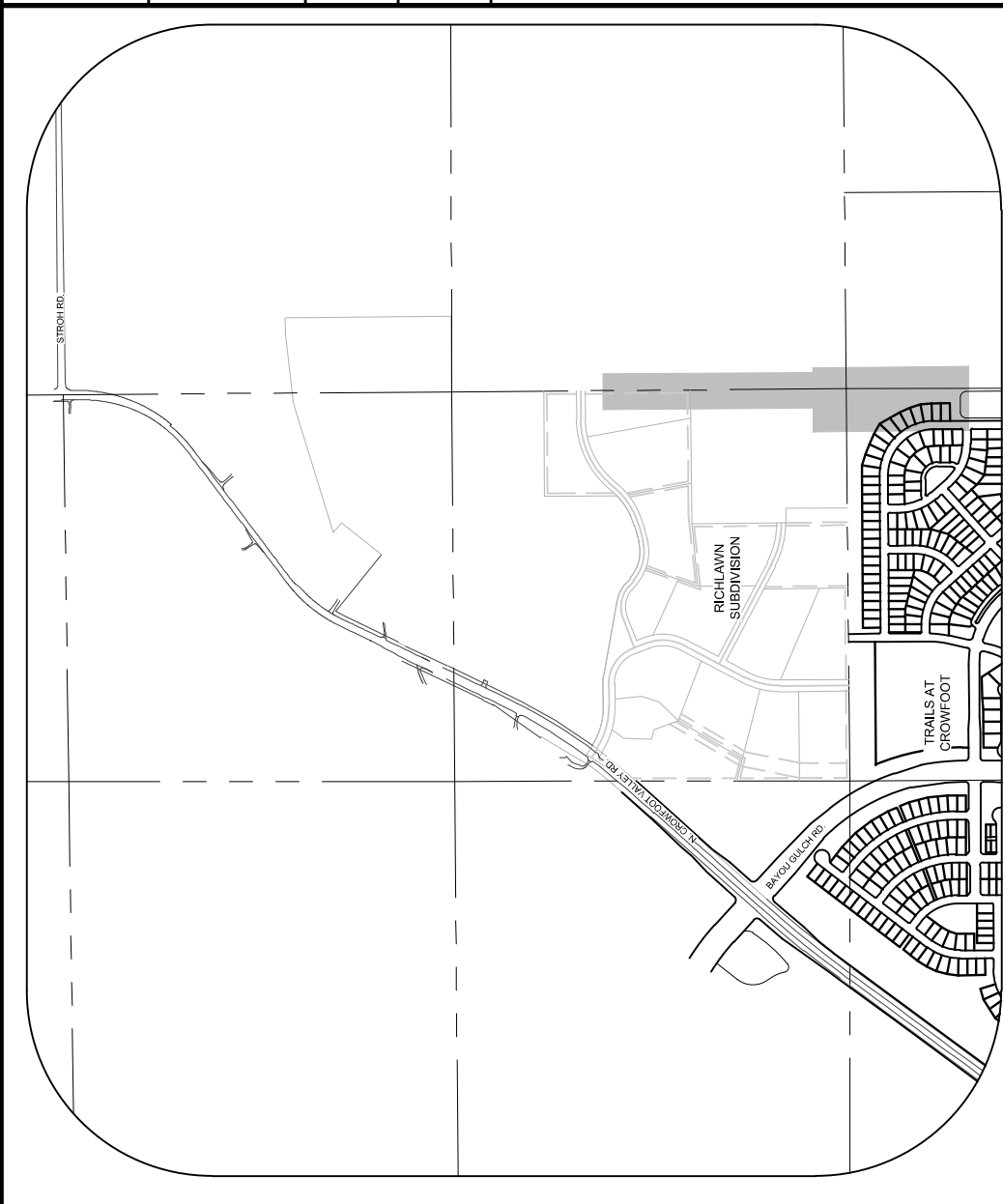
PLAN: LEMON GULCH OUTFALL - OFFSITE STA: 59+50.00 TO 65+54.00  
 HORIZONTAL SCALE: 1" = 50'

BENCHMARK  
 DOUGLAS COUNTY CONTROL POINT KNOWN AS 1.060032, BEING A  
 3-1/4" ALUMINUM CAP, BEING LOCATED IN THE SOUTHWEST  
 QUARTER CORNER OF SAID SECTION 9 BY A 2-1/2"  
 OF THE STATE PRINCIPAL MERIDIAN. PUBLISHED  
 ELEVATION OF 1799.2870 METERS (5903.13 FEET) (NAVD '88 DATUM).  
 SOUTH 00°15'06" EAST, 2643.70 FEET.

BASIS OF BEARINGS:  
 THE EAST LINE OF THE NORTHEAST QUARTER OF SAID SECTION 9  
 BEING MONUMENTED AT THE NORTHEAST CORNER OF SAID  
 SECTION 9 BY A 3-1/4" ALUMINUM CAP STAMPED LS 2983 AND AT  
 THE EAST QUARTER CORNER OF SAID SECTION 9 BY A 2-1/2"  
 SOUTH 00°15'06" EAST, 2643.70 FEET.



No.	Revisions	Date	Int.	Appr.	Date

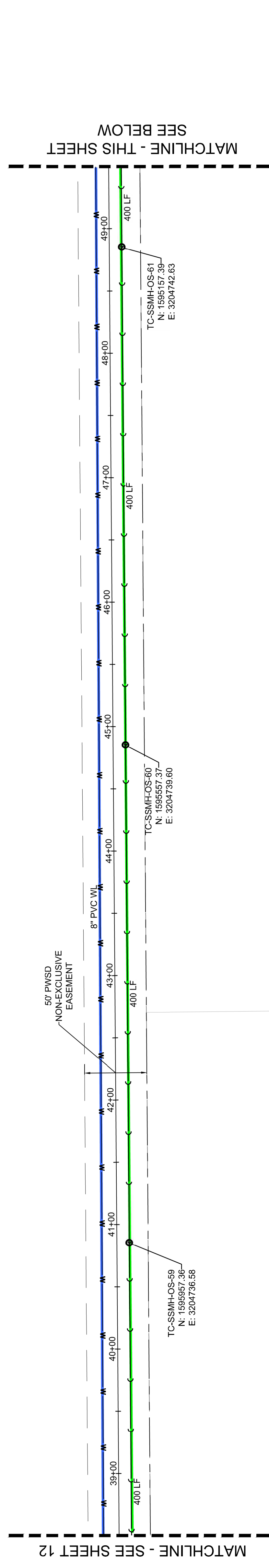
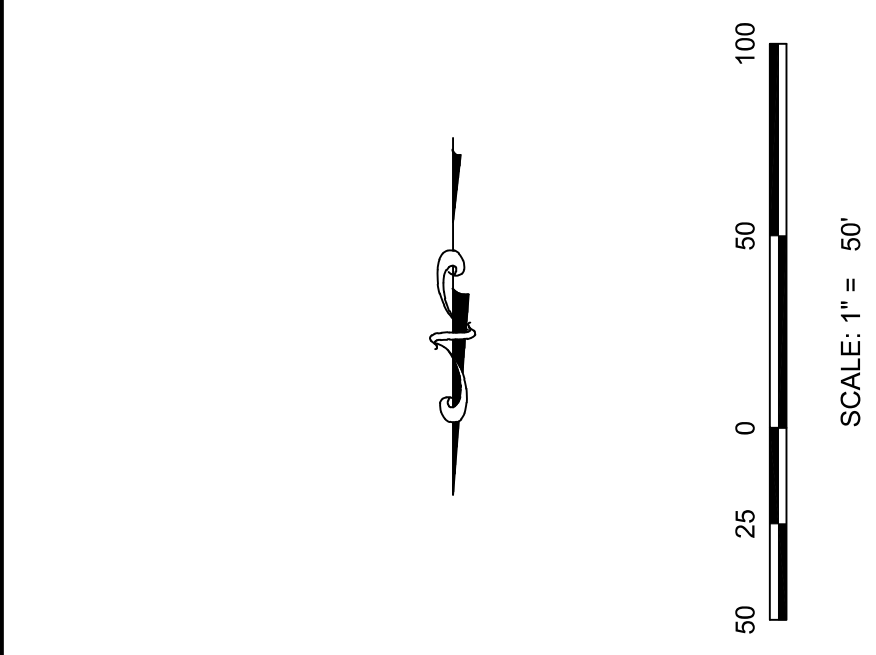


**LEGEND**

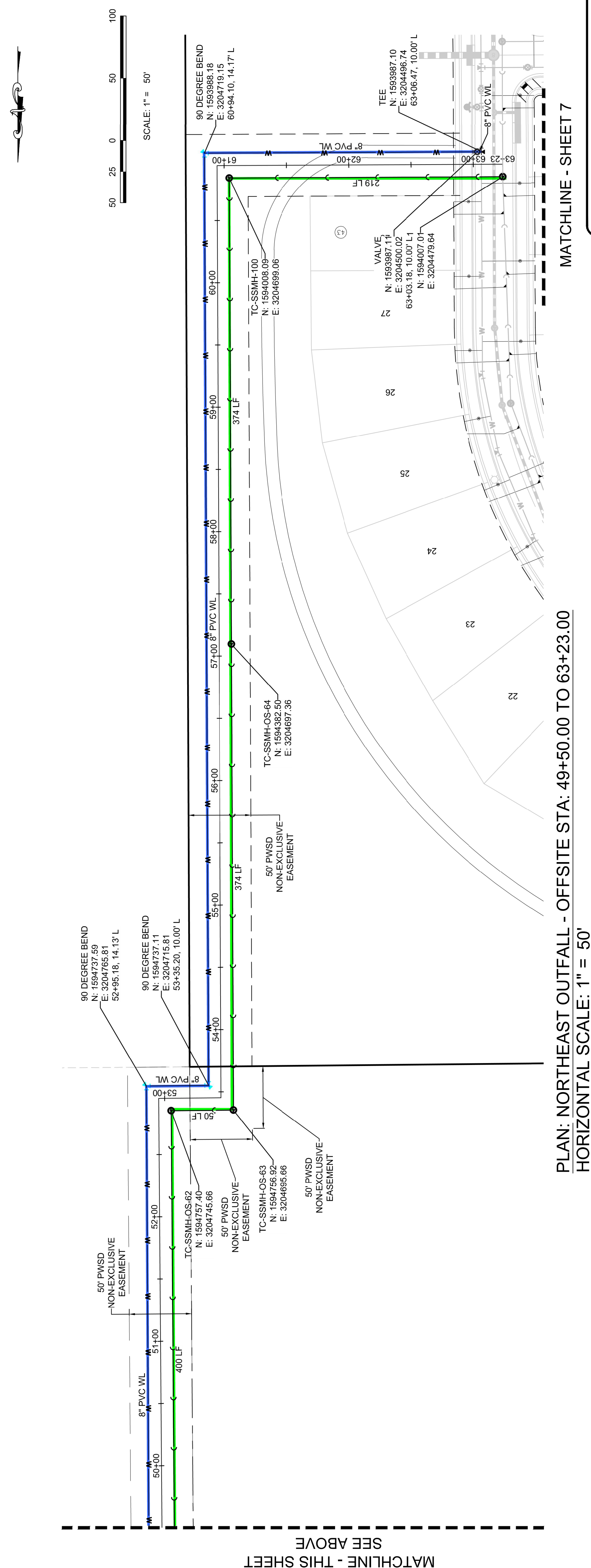
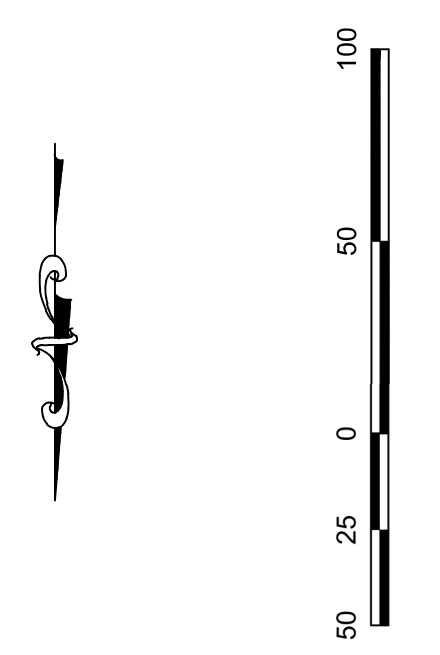
Ⓜ	BLOCK NUMBER	△	PROPOSED RANGE POINT
Ⓜ	LOT TYPE	—	CENTERLINE
Ⓜ	LOT NUMBER	—	RIGHT-OF-WAY
Ⓜ	PROPOSED BUTTERFLY VALVE	—	PROPERTY LINE
Ⓜ	PROPOSED CAP WITH END OF LINE BLOWOFF	—	EDGE OF PAVEMENT
Ⓜ	PROPOSED REDUCER	→	PROPOSED DIRECTION OF FLOW
Ⓜ	PROPOSED VALVE	1.0%	PROPOSED SLOPE & DIRECTION
Ⓜ	PROPOSED FIRE HYDRANT	—5615	EXISTING 5' CONTOUR
Ⓜ	PROPOSED W/ FITTING WITH THRUST BLOCK	—5616	EXISTING 1' CONTOUR
Ⓜ	PROPOSED FLARED END SECTION	—5620	PROPOSED 5' CONTOUR
Ⓜ	PROPOSED LOW POINT BLOW-OFF	—5607	PROPOSED 1' CONTOUR
Ⓜ	PROPOSED AIR VALVE	36" SS	PROPOSED STORM DRAIN
Ⓜ	EXISTING BLOW OFF VALVE	18" SS	PROPOSED SEWER LINE WITH MANHOLE
Ⓜ	EXISTING VALVE	Ⓜ	PROPOSED SEWER LATERAL
Ⓜ	EXISTING FIRE HYDRANT	Ⓜ	PROPOSED WATER LINE
Ⓜ	PROPOSED LIGHT POLE	Ⓜ	PROPOSED WATER LATERAL W/ METER
Ⓜ	PROPOSED SIDEWALK RAMP	Ⓜ	EXISTING 60" RAW WATER LINE
Ⓜ	EXISTING ELEVATION	—	SECTION LINE
Ⓜ	PROPOSED DESIGN ELEVATION	10.00	FILING BOUNDARY
Ⓜ	PROPOSED STORM DRAIN INLET	10.00	EXISTING FIBER OPTIC LINE
Ⓜ	PROPOSED STORM DRAIN MANHOLE	Ⓜ	EXISTING OVERHEAD HIGH VOLTAGE LINE
Ⓜ		Ⓜ	EXISTING TELEPHONE LINE

**ABBREVIATIONS**

AD	ANGLE DIFFERENCE	PVC	POLYVINYL CHLORIDE
BVC	BEGIN VERTICAL CURVE	PVI	PT OF VERTICAL INTERSECTION
BVP	BEGIN VERTICAL PROFILE	PVT	POINT OF VERTICAL TANGENT
CRR	CURVE RETURN RADIUS	RCBC	REINFORCED CONCRETE BOX CULVERT
EL	ELEVATION	RCP	REINFORCED CONCRETE PIPE
EP	EDGE OF PAVEMENT	ROW	RIGHT OF WAY
EVP	END VERTICAL CURVE	SD	STORM DRAIN
FG	FINISHED GROUND	SL	SECTION LINE
FL	FLOW LINE	SS	SANITARY SEWER
HP	HIGH POINT	TC	TOP OF CURB
INV	INVERT	TC.A	TOP OF PIPE
K	CURVATURE COEFFICIENT	UE	UTILITY EASEMENT
LF	LINEAR FEET	VC	VERTICAL CURVE
MH	MANHOLE	WL	WATER LINE
N.T.S.	NOT TO SCALE	WSE	WATER SURFACE ELEVATION
PL	PROPERTY LINE		



PLAN: NORTHEAST OUTFALL - OFFSITE STA: 38+50.00 TO 49+50.00  
 HORIZONTAL SCALE: 1" = 50'



PLAN: NORTHEAST OUTFALL - OFFSITE STA: 49+50.00 TO 63+23.00  
 HORIZONTAL SCALE: 1" = 50'

**BENCHMARK**  
 DOUGLAS COUNTY CONTROL POINT KNOWN AS 1.060022, BEING A 3-1/4" ALUMINUM CAP, BEING LOCATED IN THE SOUTHWEST QUARTER SECTION 9 BY A 3-1/4" ALUMINUM CAP STAMPED LS 2083 AND AT THE EAST QUARTER CORNER OF SAID SECTION 9 BY A 2-1/2" ALUMINUM CAP STAMPED LS 2083. THE BENCHMARK IS PUBLISHED ON THE SIXTH PRINCIPAL MERIDIAN. PLANNING AND SURVEYING ELEVATION OF 1799.2870 METERS (5903.13 FEET) NAD 83 DATUM.

**BASIS OF BEARINGS:**  
 THE EAST LINE OF THE NORTHEAST QUARTER OF SAID SECTION 9 BEING MONUMENTED AT THE NORTHEAST CORNER OF SAID SECTION 9 BY A 3-1/4" ALUMINUM CAP STAMPED LS 2083 AND AT THE EAST QUARTER CORNER OF SAID SECTION 9 BY A 2-1/2" ALUMINUM CAP STAMPED LS 2083. THE BENCHMARK IS PUBLISHED ON THE SIXTH PRINCIPAL MERIDIAN. PLANNING AND SURVEYING ELEVATION OF 1799.2870 METERS (5903.13 FEET) NAD 83 DATUM.