

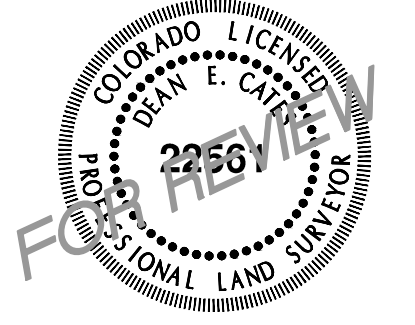
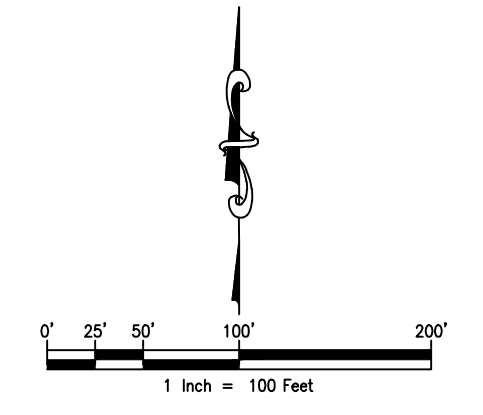
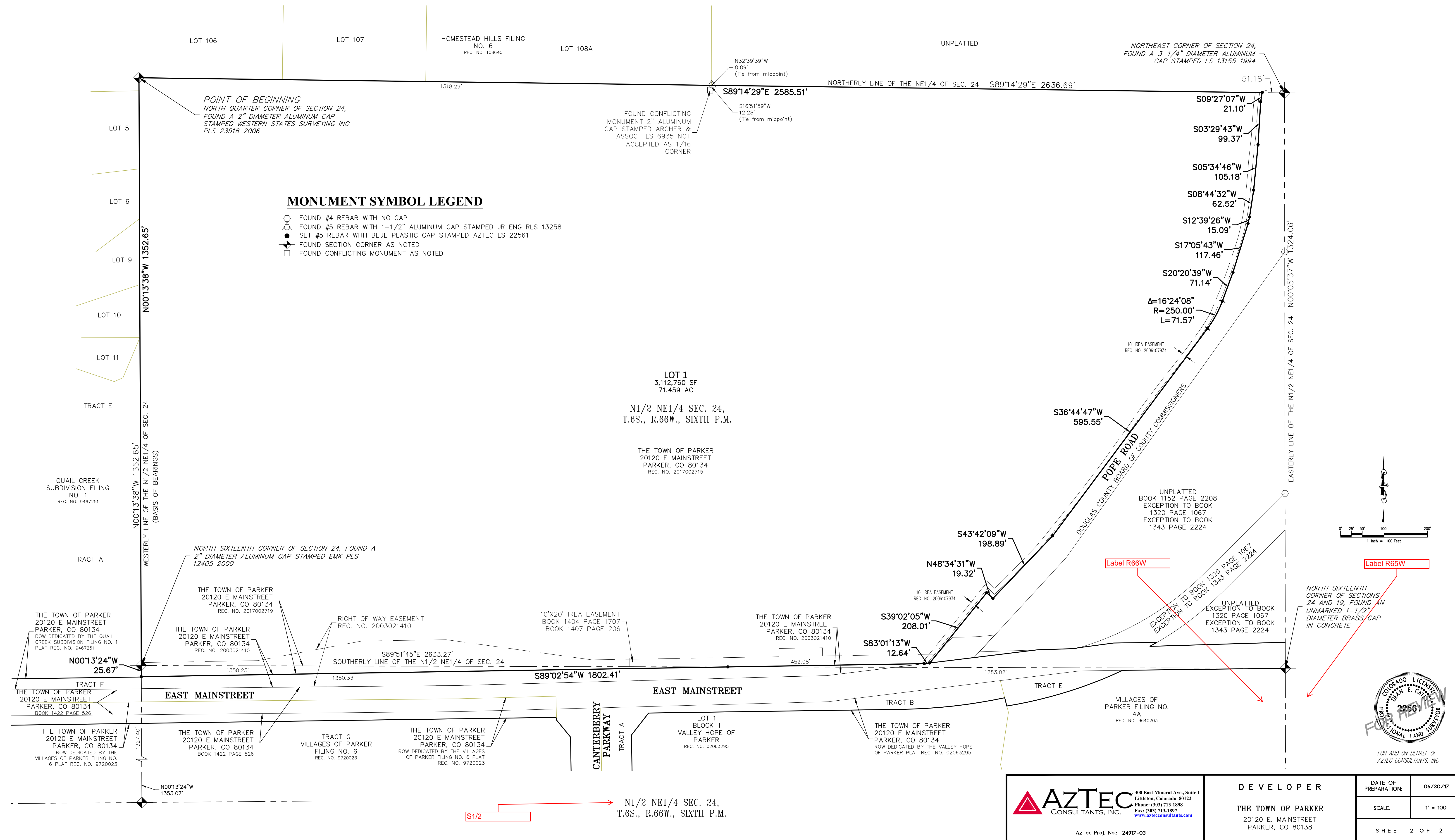
RAY J. HARVIE SUBDIVISION FILING NO. 1

SUBDIVISION EXEMPTION PLAT

A PARCEL LOCATED IN THE NORTHEAST QUARTER OF SECTION 24, TOWNSHIP 6 SOUTH, RANGE 66 WEST OF THE SIXTH PRINCIPAL MERIDIAN,
TOWN OF PARKER, COUNTY OF DOUGLAS, STATE OF COLORADO

71.459 ACRES - 1 NON-RESIDENTIAL LOT

SHEET 2 OF 2



AZTEC
CONSULTANTS, INC.

300 East Mineral Ave., Suite 1
Littleton, Colorado 80122
Phone: (303) 713-1899
Fax: (303) 713-1897
www.aztecconsultants.com

Aztec Proj. No.: 24917-03

DEVELOPER
THE TOWN OF PARKER
20120 E. MAINSTREET
PARKER, CO 80138

DATE OF PREPARATION:	06/30/17
SCALE:	1" = 100'
SHEET 2 OF 2	