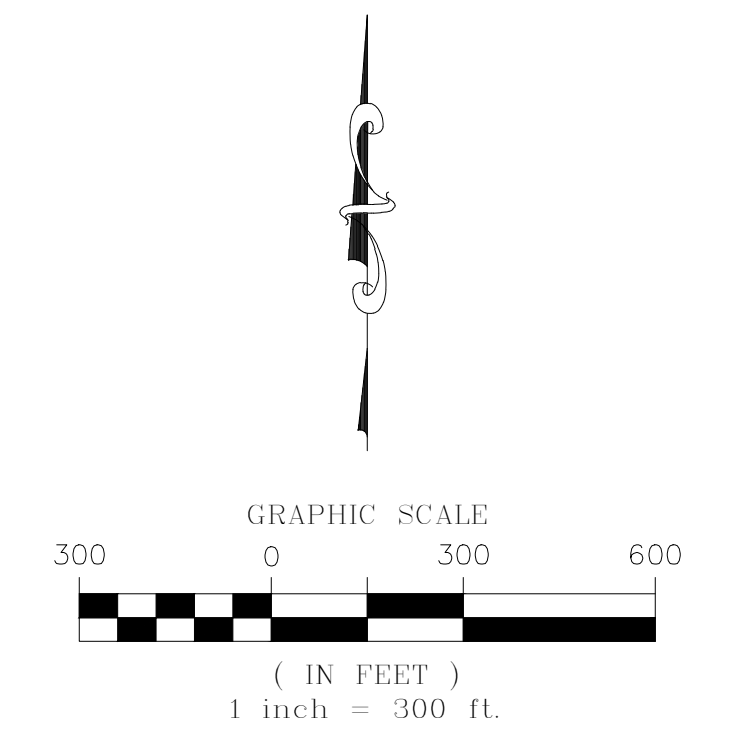
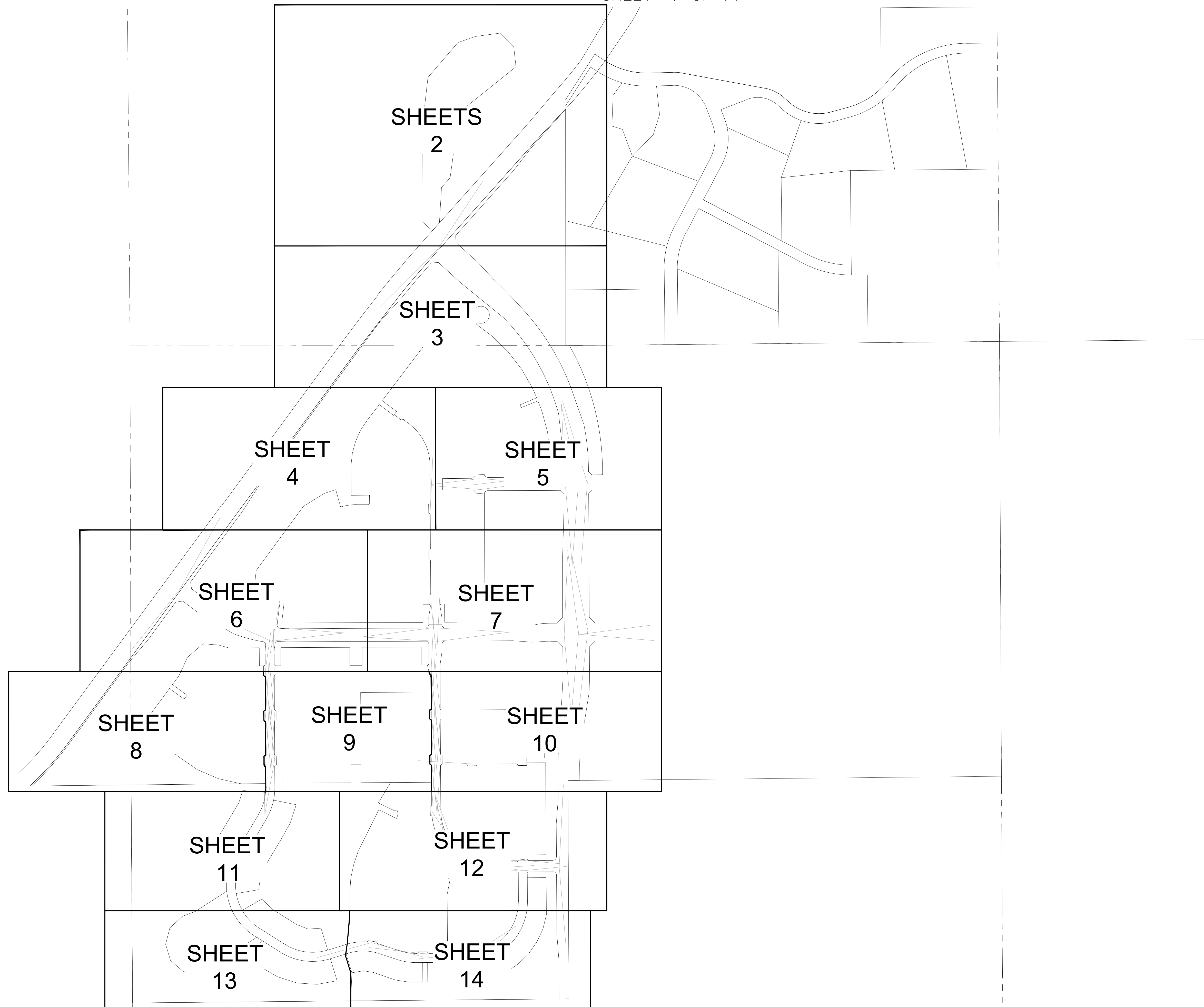


TRAILS AT CROWFOOT SUBDIVISION FILING NO. 1 ADDRESS PLAT

A PART OF THE SECTIONS 4, 8 AND 9, TOWNSHIP 7 SOUTH, RANGE 66 WEST OF THE 6th PRINCIPAL MERIDIAN,
TOWN OF PARKER, COUNTY OF DOUGLAS, STATE OF COLORADO

SHEET 1 OF 14

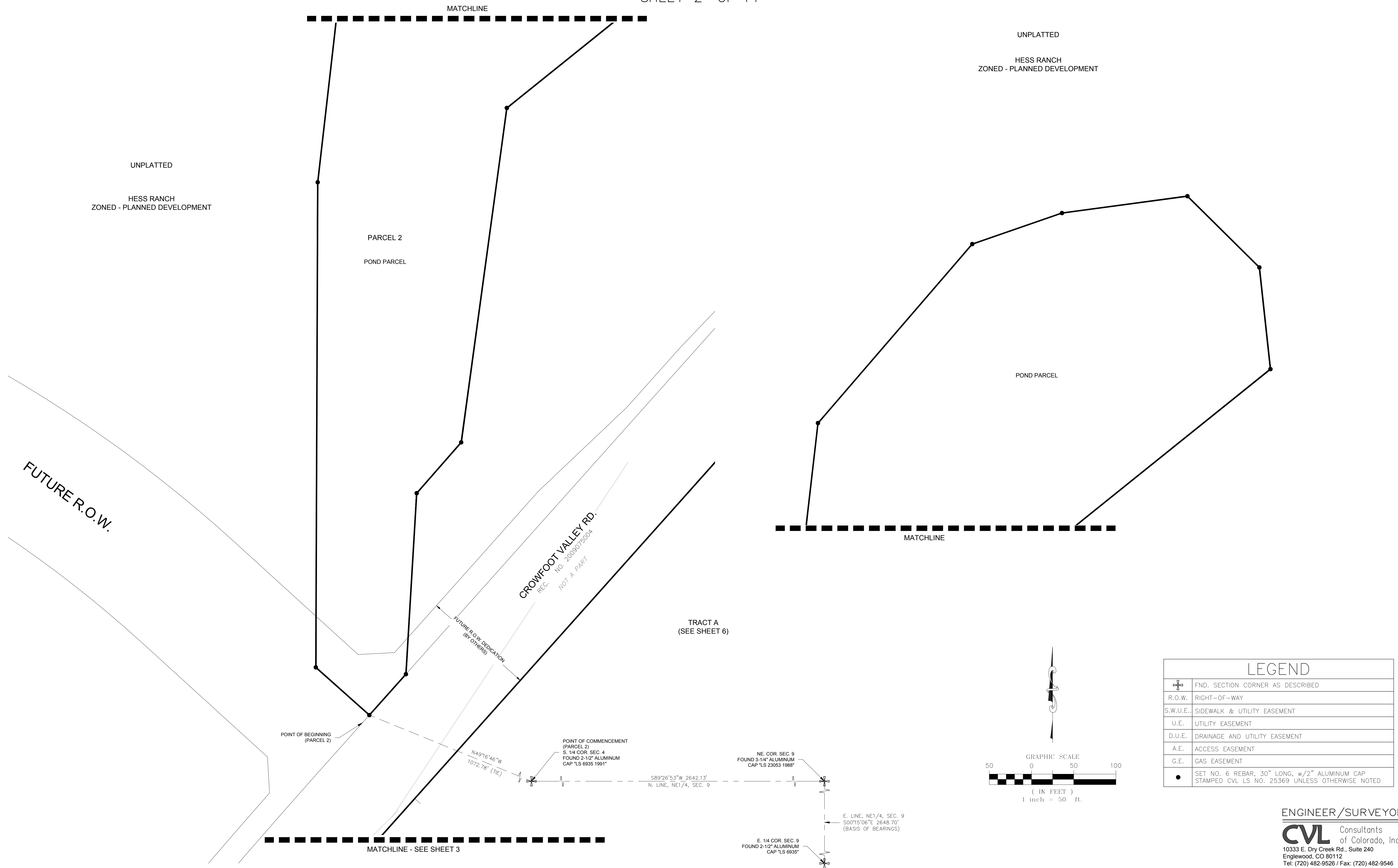


ENGINEER/SURVEYOR

CVL Consultants
of Colorado, Inc.
10333 E. Dry Creek Rd., Suite 240
Englewood, CO 80112
Tel: (720) 482-9526 / Fax: (720) 482-9546

TRAILS AT CROWFOOT SUBDIVISION FILING NO. 1 ADDRESS PLAT

A PART OF THE SECTIONS 4, 8 AND 9, TOWNSHIP 7 SOUTH, RANGE 66 WEST OF THE 6th PRINCIPAL MERIDIAN,
TOWN OF PARKER, COUNTY OF DOUGLAS, STATE OF COLORADO
SHEET 2 OF 14

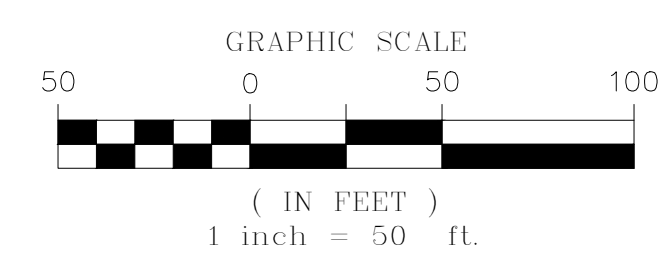
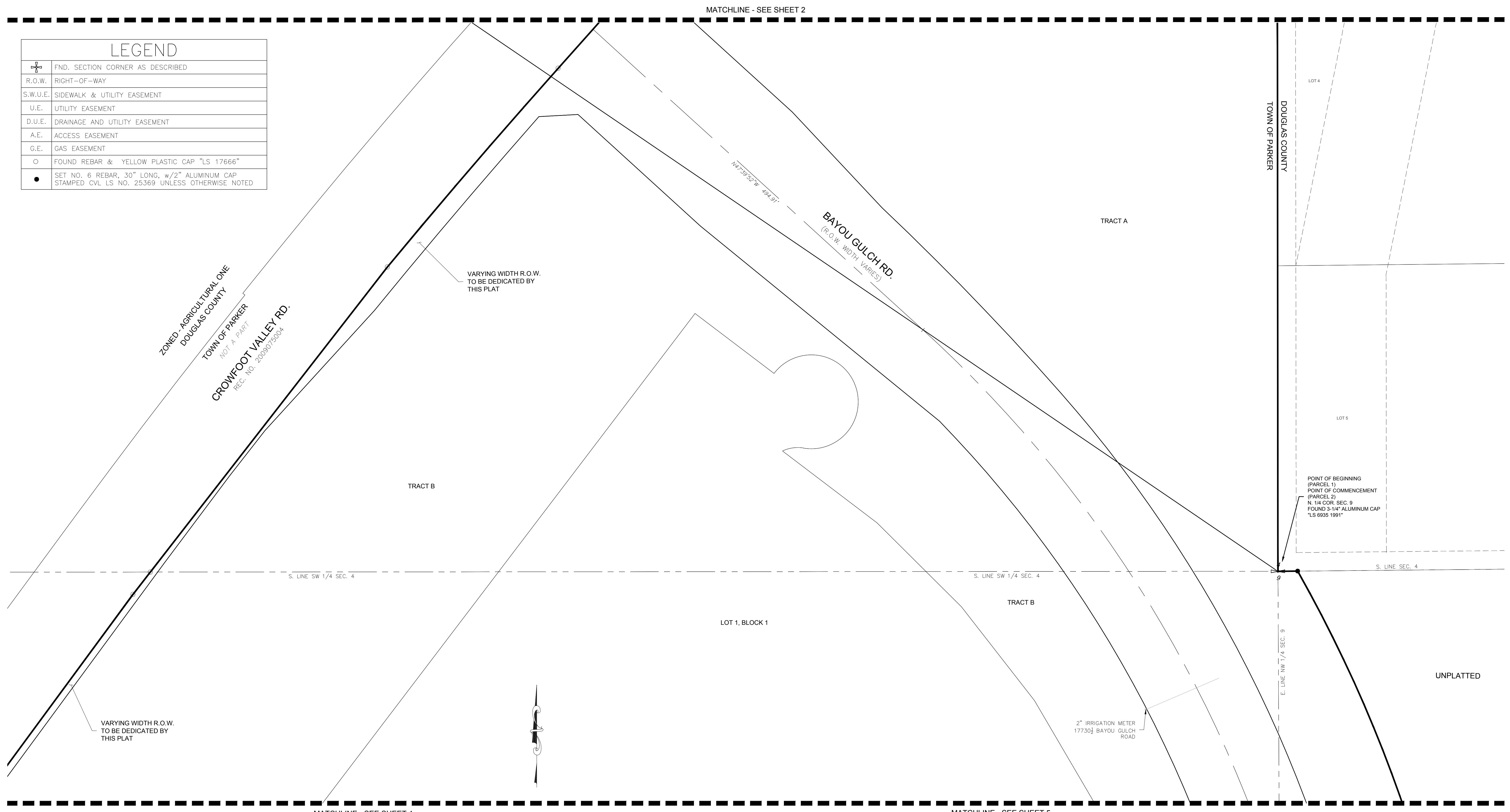


ENGINEER/SURVEYOR
CVL Consultants of Colorado, Inc.
 10333 E. Dry Creek Rd., Suite 240
 Englewood, CO 80112
 Tel: (720) 482-9526 / Fax: (720) 482-9546

TRAILS AT CROWFOOT SUBDIVISION FILING NO. 1 ADDRESS PLAT

A PART OF THE SECTIONS 4, 8 AND 9, TOWNSHIP 7 SOUTH, RANGE 66 WEST OF THE 6th PRINCIPAL MERIDIAN,
TOWN OF PARKER, COUNTY OF DOUGLAS, STATE OF COLORADO
SHEET 3 OF 14

LEGEND	
	FND. SECTION CORNER AS DESCRIBED
R.O.W.	RIGHT-OF-WAY
S.W.U.E.	SIDEWALK & UTILITY EASEMENT
U.E.	UTILITY EASEMENT
D.U.E.	DRAINAGE AND UTILITY EASEMENT
A.E.	ACCESS EASEMENT
G.E.	GAS EASEMENT
	FOUND REBAR & YELLOW PLASTIC CAP "LS 17666"
	SET NO. 6 REBAR, 30" LONG, w/2" ALUMINUM CAP STAMPED CVL LS NO. 25369 UNLESS OTHERWISE NOTED

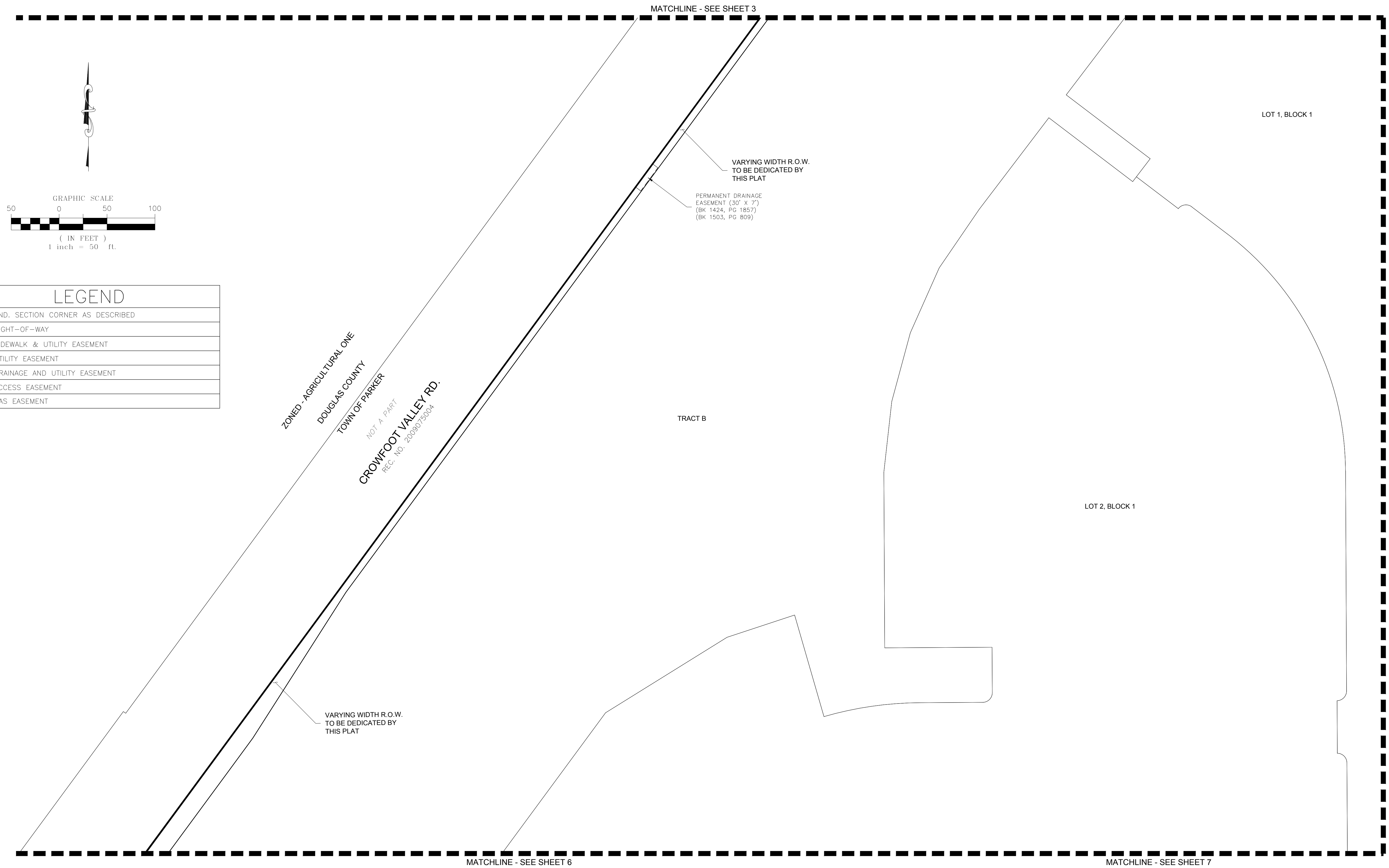


CURVE TABLE				
CURVE NO.	LENGTH	RADIUS	DELTA	CHORD DIRECTION

ENGINEER/SURVEYOR
CVL Consultants of Colorado, Inc.
10333 E. Dry Creek Rd., Suite 240
Englewood, CO 80112
Tel: (720) 482-9526 / Fax: (720) 482-9546

TRAILS AT CROWFOOT SUBDIVISION FILING NO. 1 ADDRESS PLAT

A PART OF THE SECTIONS 4, 8 AND 9, TOWNSHIP 7 SOUTH, RANGE 66 WEST OF THE 6th PRINCIPAL MERIDIAN,
TOWN OF PARKER, COUNTY OF DOUGLAS, STATE OF COLORADO
SHEET 4 OF 14



LEGEND	
	FND. SECTION CORNER AS DESCRIBED
R.O.W.	RIGHT-OF-WAY
S.W.U.E.	SIDEWALK & UTILITY EASEMENT
U.E.	UTILITY EASEMENT
D.U.E.	DRAINAGE AND UTILITY EASEMENT
A.E.	ACCESS EASEMENT
G.E.	GAS EASEMENT

ZONED - AGRICULTURAL ONE
DOUGLAS COUNTY
TOWN OF PARKER
NOT A PART
CROWFOOT VALLEY RD.
REC. NO. 2008075004

TRACT B

LOT 1, BLOCK 1

LOT 2, BLOCK 1

MATCHLINE - SEE SHEET 6

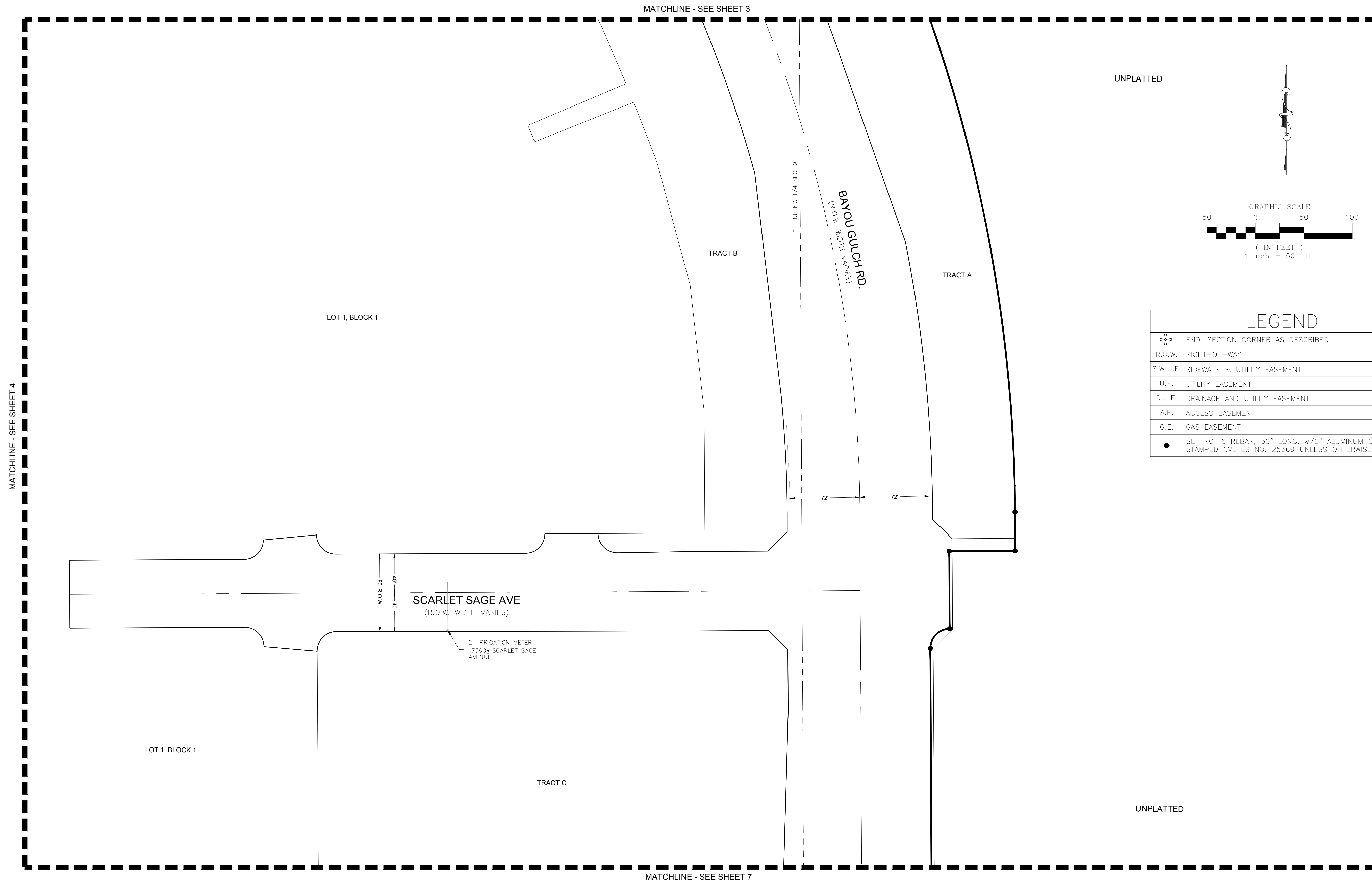
MATCHLINE - SEE SHEET 7

MATCHLINE - SEE SHEET 5

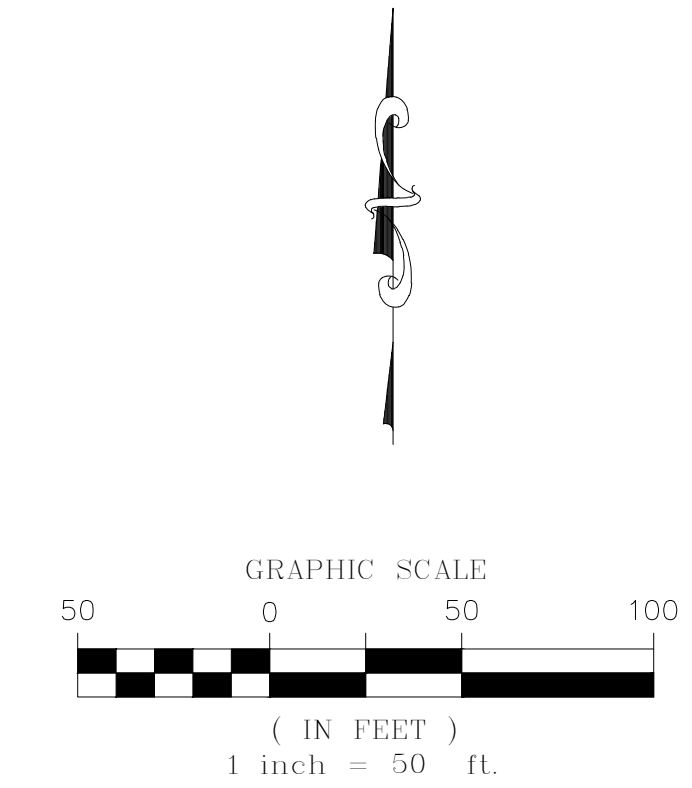
ENGINEER/SURVEYOR
CVL Consultants
of Colorado, Inc.
10333 E. Dry Creek Rd., Suite 240
Englewood, CO 80112
Tel: (720) 482-9526 / Fax: (720) 482-9546

TRAILS AT CROWFOOT SUBDIVISION FILING NO. 1 ADDRESS PLAT

A PART OF THE SECTIONS 4, 8 AND 9, TOWNSHIP 7 SOUTH, RANGE 66 WEST OF THE 6th PRINCIPAL MERIDIAN,
TOWN OF PARKER, COUNTY OF DOUGLAS, STATE OF COLORADO
SHEET 5 OF 14



UNPLATTED



LEGEND	
	FND. SECTION CORNER AS DESCRIBED
R.O.W.	RIGHT-OF-WAY
S.W.U.E.	SIDEWALK & UTILITY EASEMENT
U.E.	UTILITY EASEMENT
D.U.E.	DRAINAGE AND UTILITY EASEMENT
A.E.	ACCESS EASEMENT
G.E.	GAS EASEMENT
	SET NO. 6 REBAR, 30" LONG, w/2" ALUMINUM CAP STAMPED CVL LS NO. 25369 UNLESS OTHERWISE NOTED

UNPLATTED

ENGINEER/SURVEYOR

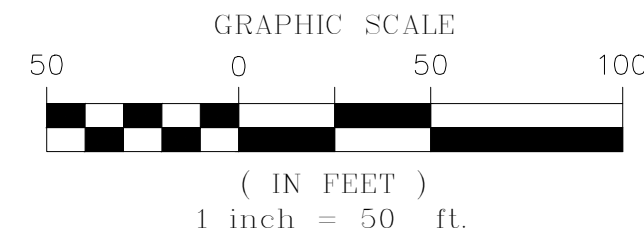
CVL Consultants
of Colorado, Inc.
10333 E. Dry Creek Rd., Suite 240
Englewood, CO 80112
Tel: (720) 482-9526 / Fax: (720) 482-9546

TRAILS AT CROWFOOT SUBDIVISION FILING NO. 1 ADDRESS PLAT

A PART OF THE SECTIONS 4, 8 AND 9, TOWNSHIP 7 SOUTH, RANGE 66 WEST OF THE 6th PRINCIPAL MERIDIAN,
TOWN OF PARKER, COUNTY OF DOUGLAS, STATE OF COLORADO

SHEET 6 OF 14

MATCHLINE - SEE SHEET 4



W. LINE, SW 1/4, SEC. 4

ZONED - AGRICULTURAL ONE
DOUGLAS COUNTY
TOWN OF PARKER

NOT A PART
CROWFOOT VALLEY RD.
REC. NO. 2009075004

FUTURE R.O.W. DEDICATION
(by Others)

VARYING WIDTH R.O.W.
TO BE DEDICATED BY
THIS PLAT

PERMANENT DRAINAGE
EASEMENT (30' X 7')
(BK 1424, PG 1857)
(BK 1503, PG 809)

TRACT B

LOT 2, BLOCK 1

1" IRRIGATION METER
17000 1/2 N. PINERY PARKWAY

N. PINERY PKWY.
(R.O.W. WIDTH VARIES)

TRACT D
2" IRRIGATION METER
17191 1/2 N. PINERY
PARKWAY

LOT 3, BLOCK 2

VARYING WIDTH R.O.W.
TO BE DEDICATED BY
THIS PLAT

ROSE MALLOW AVE

LOT 1, BLOCK 2

LOT 1, BLOCK 3

TRACT F

MATCHLINE - SEE SHEET 8

MATCHLINE - SEE SHEET 9

MATCHLINE - SEE SHEET 7

LEGEND

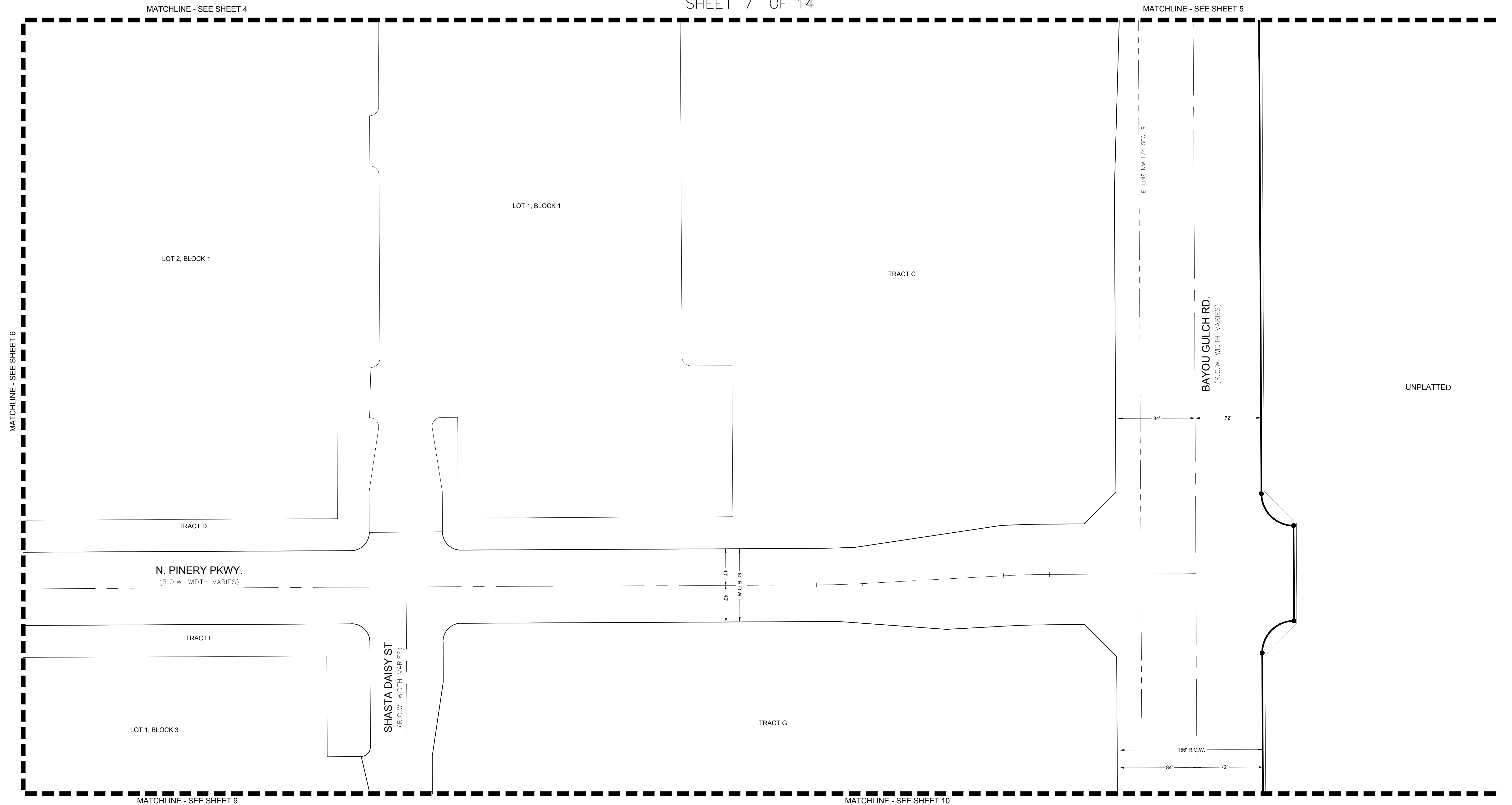
	FND. SECTION CORNER AS DESCRIBED
	R.O.W. RIGHT-OF-WAY
	S.W.U.E. SIDEWALK & UTILITY EASEMENT
	U.E. UTILITY EASEMENT
	D.U.E. DRAINAGE AND UTILITY EASEMENT
	A.E. ACCESS EASEMENT
	G.E. GAS EASEMENT

ENGINEER/SURVEYOR

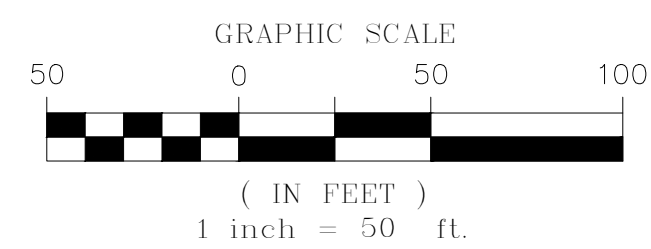
CVL Consultants
of Colorado, Inc.
10333 E. Dry Creek Rd., Suite 240
Englewood, CO 80112
Tel: (720) 482-9526 / Fax: (720) 482-9546

TRAILS AT CROWFOOT SUBDIVISION FILING NO. 1 ADDRESS PLAT

A PART OF THE SECTIONS 4, 8 AND 9, TOWNSHIP 7 SOUTH, RANGE 66 WEST OF THE 6th PRINCIPAL MERIDIAN,
TOWN OF PARKER, COUNTY OF DOUGLAS, STATE OF COLORADO
SHEET 7 OF 14



LEGEND	
	FND. SECTION CORNER AS DESCRIBED
	R.O.W. RIGHT-OF-WAY
	S.W.U.E. SIDEWALK & UTILITY EASEMENT
	U.E. UTILITY EASEMENT
	D.U.E. DRAINAGE AND UTILITY EASEMENT
	A.E. ACCESS EASEMENT
	G.E. GAS EASEMENT
	SET NO. 6 REBAR, 30" LONG, w/2" ALUMINUM CAP STAMPED CVL LS NO. 25369 UNLESS OTHERWISE NOTED

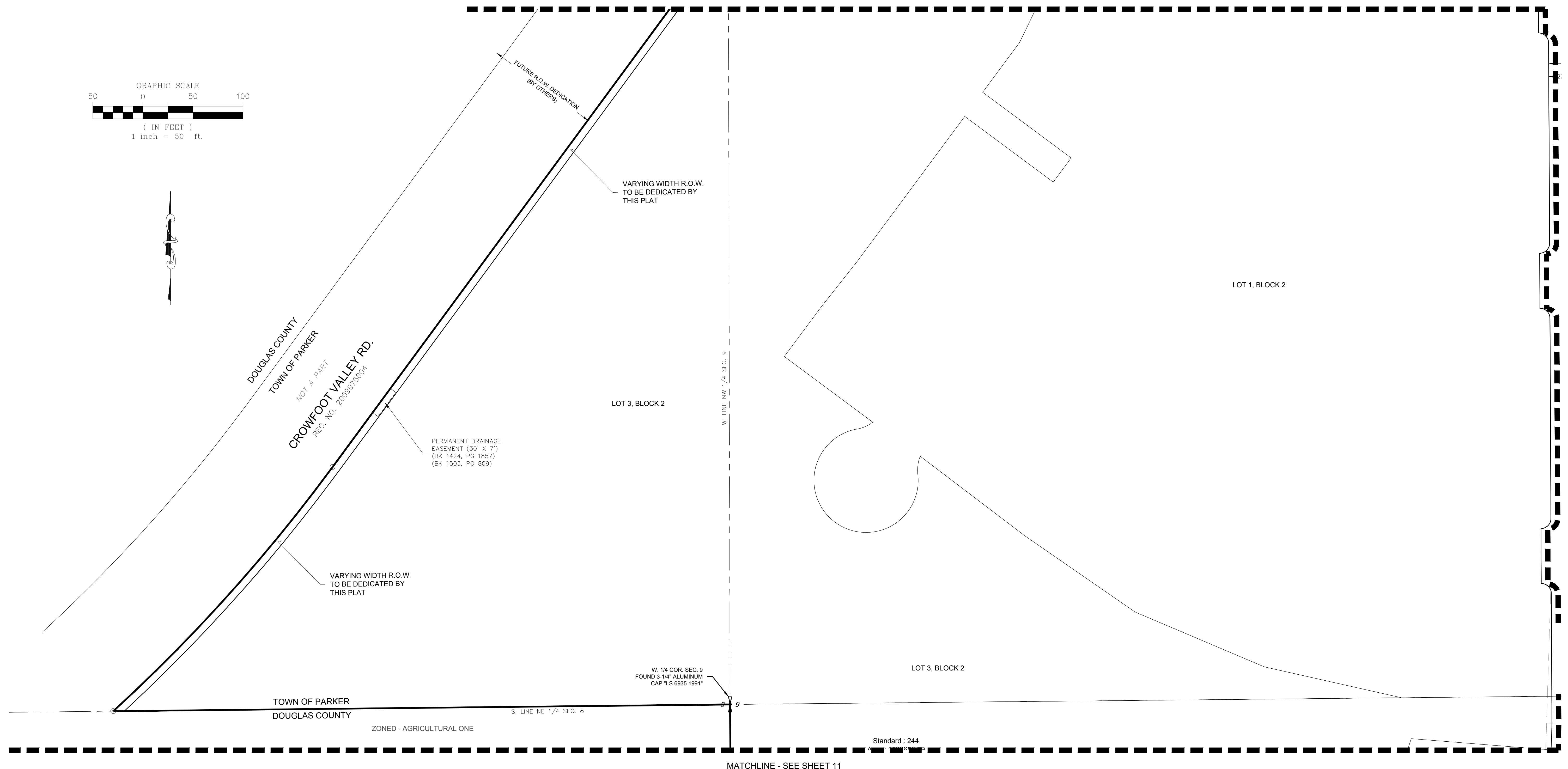
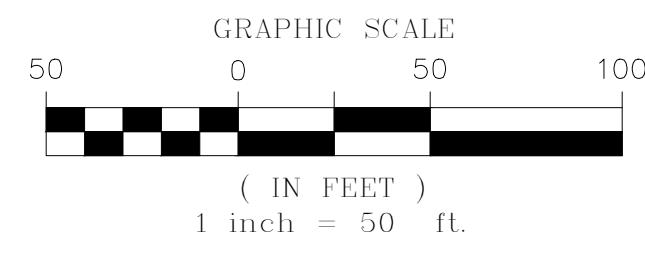


ENGINEER/SURVEYOR
CVL Consultants
of Colorado, Inc.
10333 E. Dry Creek Rd., Suite 240
Englewood, CO 80112
Tel: (720) 482-9526 / Fax: (720) 482-9546

TRAILS AT CROWFOOT SUBDIVISION FILING NO. 1 ADDRESS PLAT

A PART OF THE SECTIONS 4, 8 AND 9, TOWNSHIP 7 SOUTH, RANGE 66 WEST OF THE 6th PRINCIPAL MERIDIAN,
TOWN OF PARKER, COUNTY OF DOUGLAS, STATE OF COLORADO
SHEET 8 OF 14

MATCHLINE - SEE SHEET 6



MATCHLINE - SEE SHEET 11

LEGEND	
	FND. SECTION CORNER AS DESCRIBED
	R.O.W. RIGHT-OF-WAY
	S.W.U.E. SIDEWALK & UTILITY EASEMENT
	U.E. UTILITY EASEMENT
	D.U.E. DRAINAGE AND UTILITY EASEMENT
	A.E. ACCESS EASEMENT
	G.E. GAS EASEMENT
	FOUND REBAR & YELLOW PLASTIC CAP "LS 17666"

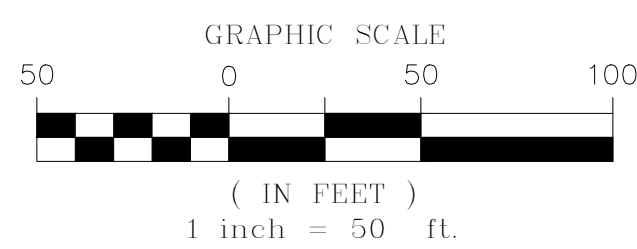
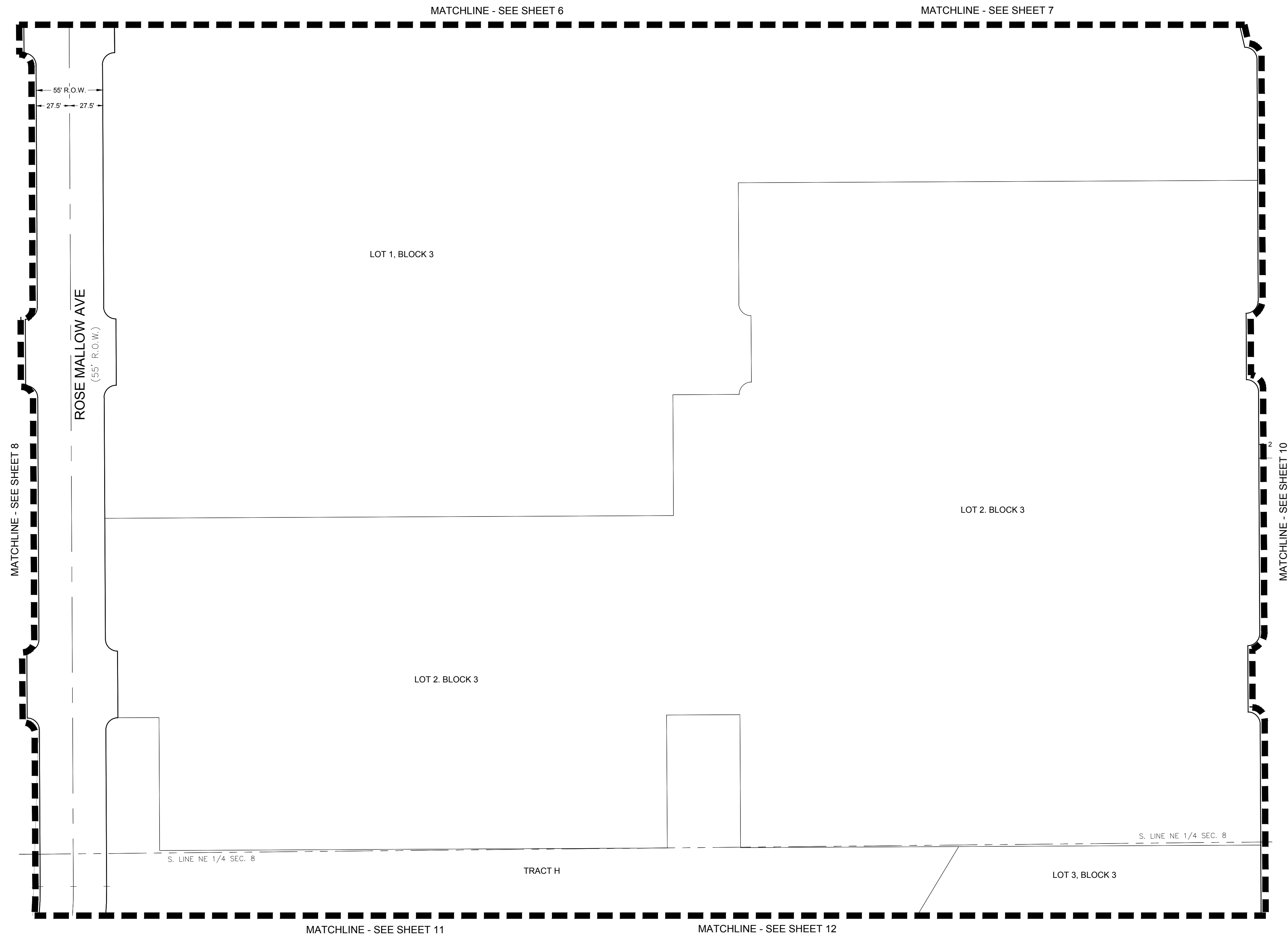
CURVE TABLE					
CURVE NO.	LENGTH	RADIUS	DELTA	CHORD DIRECTION	CHORD LENGTH

ENGINEER/SURVEYOR

CVL Consultants
of Colorado, Inc.
10333 E. Dry Creek Rd., Suite 240
Englewood, CO 80112
Tel: (720) 482-9526 / Fax: (720) 482-9546

TRAILS AT CROWFOOT SUBDIVISION FILING NO. 1 ADDRESS PLAT

A PART OF THE SECTIONS 4, 8 AND 9, TOWNSHIP 7 SOUTH, RANGE 66 WEST OF THE 6th PRINCIPAL MERIDIAN,
TOWN OF PARKER, COUNTY OF DOUGLAS, STATE OF COLORADO
SHEET 9 OF 14



LEGEND

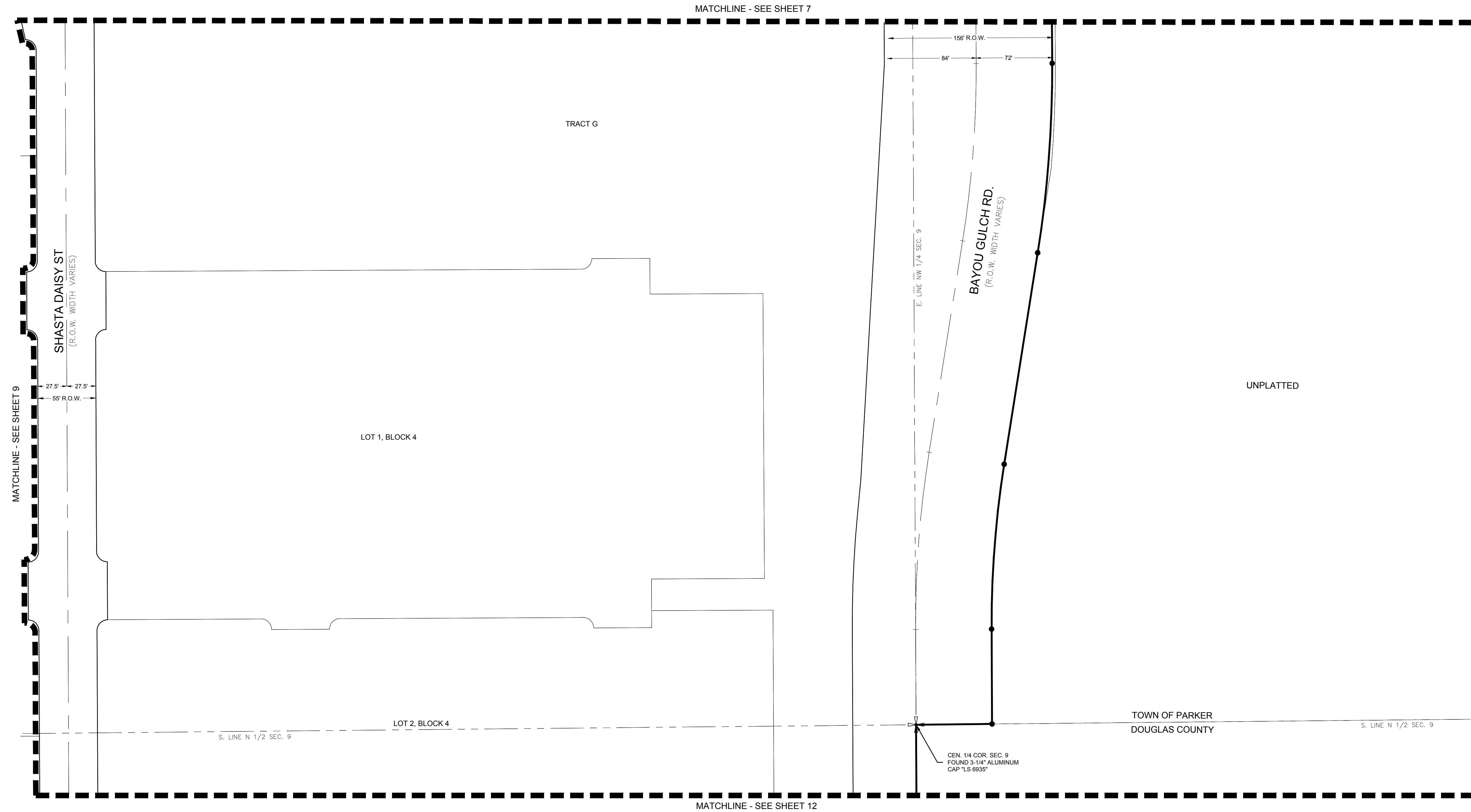
	FND. SECTION CORNER AS DESCRIBED
R.O.W.	RIGHT-OF-WAY
S.W.U.E.	SIDEWALK & UTILITY EASEMENT
U.E.	UTILITY EASEMENT
D.U.E.	DRAINAGE AND UTILITY EASEMENT
A.E.	ACCESS EASEMENT
G.E.	GAS EASEMENT

ENGINEER/SURVEYOR

CVL Consultants
of Colorado, Inc.
10333 E. Dry Creek Rd., Suite 240
Englewood, CO 80112
Tel: (720) 482-9526 / Fax: (720) 482-9546

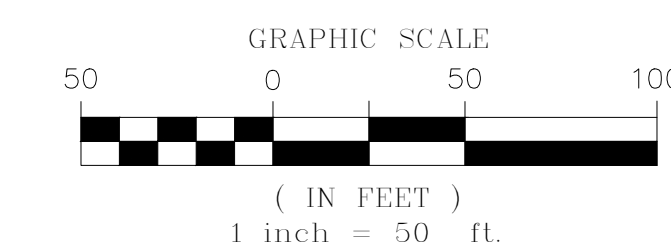
TRAILS AT CROWFOOT SUBDIVISION FILING NO. 1 ADDRESS PLAT

A PART OF THE SECTIONS 4, 8 AND 9, TOWNSHIP 7 SOUTH, RANGE 66 WEST OF THE 6th PRINCIPAL MERIDIAN,
TOWN OF PARKER, COUNTY OF DOUGLAS, STATE OF COLORADO
SHEET 10 OF 14



LEGEND

	FND. SECTION CORNER AS DESCRIBED
R.O.W.	RIGHT-OF-WAY
S.W.U.E.	SIDEWALK & UTILITY EASEMENT
U.E.	UTILITY EASEMENT
D.U.E.	DRAINAGE AND UTILITY EASEMENT
A.E.	ACCESS EASEMENT
G.E.	GAS EASEMENT
	SET NO. 6 REBAR, 30" LONG, w/2" ALUMINUM CAP STAMPED CVL LS NO. 25369 UNLESS OTHERWISE NOTED

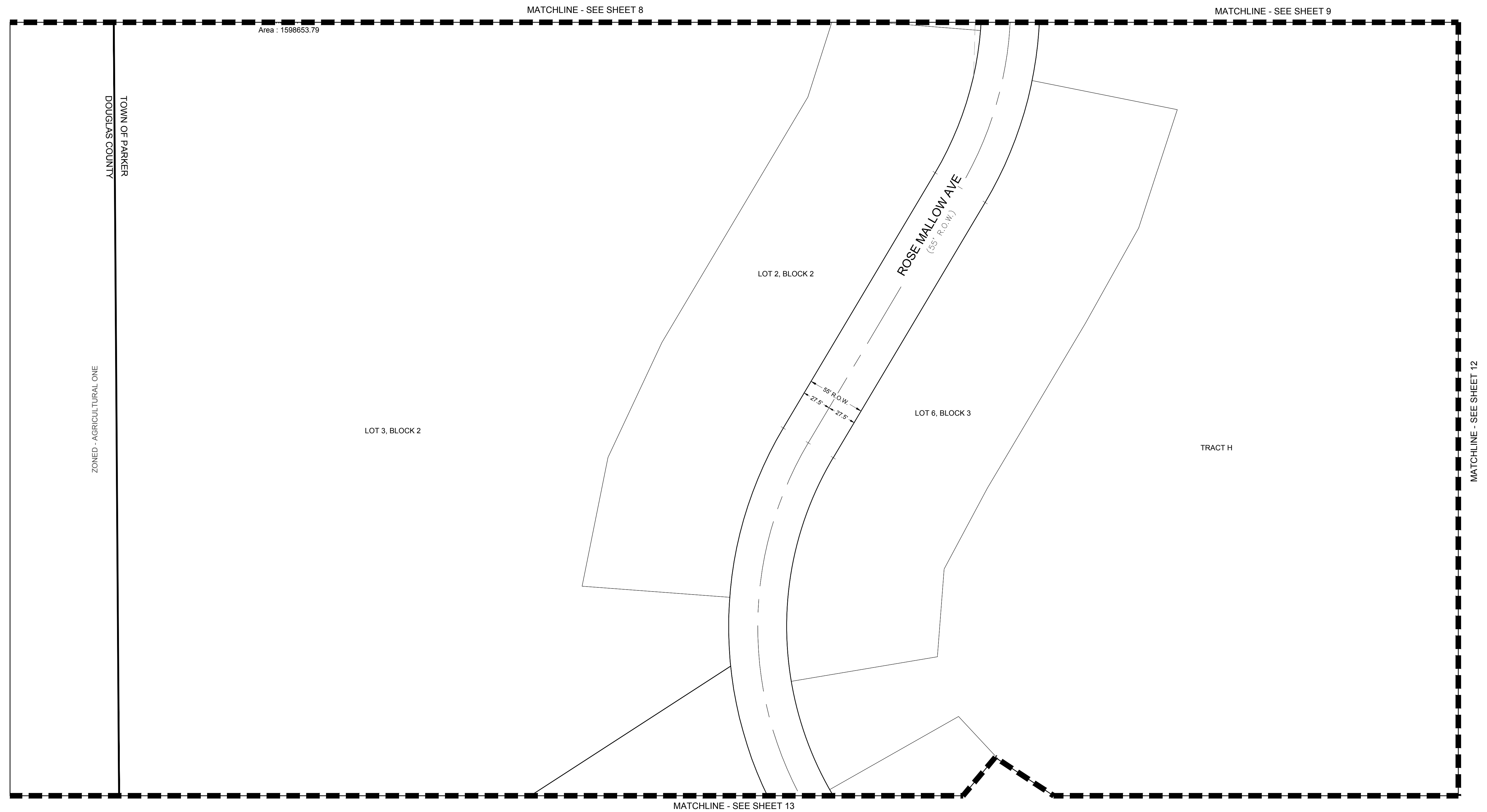


ENGINEER/SURVEYOR

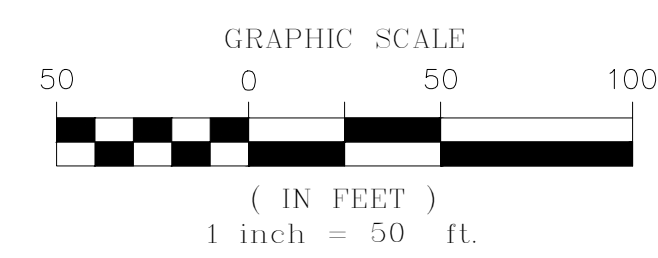
CVL Consultants
of Colorado, Inc.
10333 E. Dry Creek Rd., Suite 240
Englewood, CO 80112
Tel: (720) 482-9526 / Fax: (720) 482-9546

TRAILS AT CROWFOOT SUBDIVISION FILING NO. 1 ADDRESS PLAT

A PART OF THE SECTIONS 4, 8 AND 9, TOWNSHIP 7 SOUTH, RANGE 66 WEST OF THE 6th PRINCIPAL MERIDIAN,
TOWN OF PARKER, COUNTY OF DOUGLAS, STATE OF COLORADO
SHEET 11 OF 14



LEGEND	
	FND. SECTION CORNER AS DESCRIBED
	R.O.W. RIGHT-OF-WAY
	S.W.U.E. SIDEWALK & UTILITY EASEMENT
	U.E. UTILITY EASEMENT
	D.U.E. DRAINAGE AND UTILITY EASEMENT
	A.E. ACCESS EASEMENT
	G.E. GAS EASEMENT

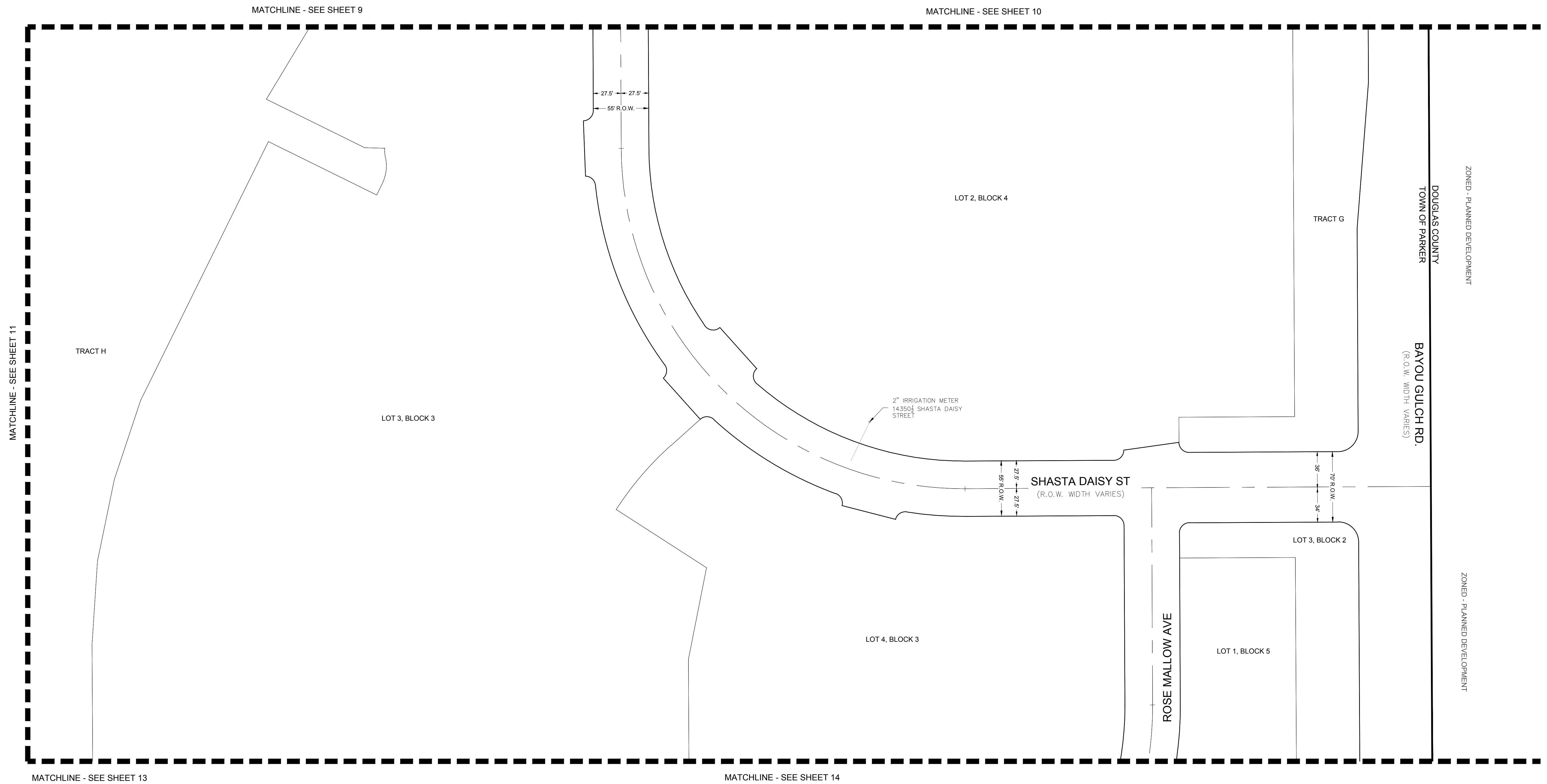


ENGINEER/SURVEYOR

CVL Consultants
of Colorado, Inc.
10333 E. Dry Creek Rd., Suite 240
Englewood, CO 80112
Tel: (720) 482-9526 / Fax: (720) 482-9546

TRAILS AT CROWFOOT SUBDIVISION FILING NO. 1 ADDRESS PLAT

A PART OF THE SECTIONS 4, 8 AND 9, TOWNSHIP 7 SOUTH, RANGE 66 WEST OF THE 6th PRINCIPAL MERIDIAN,
TOWN OF PARKER, COUNTY OF DOUGLAS, STATE OF COLORADO
SHEET 12 OF 14



MATCHLINE - SEE SHEET 11

MATCHLINE - SEE SHEET 9

MATCHLINE - SEE SHEET 10

DOUGLAS COUNTY
TOWN OF PARKER
ZONED - PLANNED DEVELOPMENT

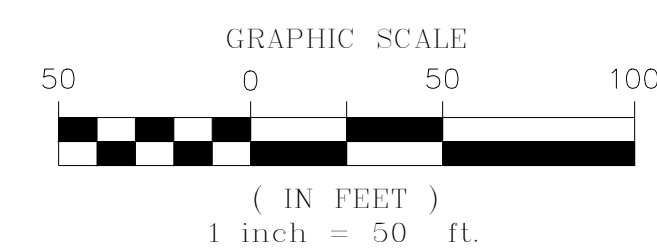
BAYOU GULCH RD.
(R.O.W. WIDTH VARIES)

ZONED - PLANNED DEVELOPMENT

MATCHLINE - SEE SHEET 13

MATCHLINE - SEE SHEET 14

LEGEND	
	FND. SECTION CORNER AS DESCRIBED
R.O.W.	RIGHT-OF-WAY
S.W.U.E.	SIDEWALK & UTILITY EASEMENT
U.E.	UTILITY EASEMENT
D.U.E.	DRAINAGE AND UTILITY EASEMENT
A.E.	ACCESS EASEMENT
G.E.	GAS EASEMENT

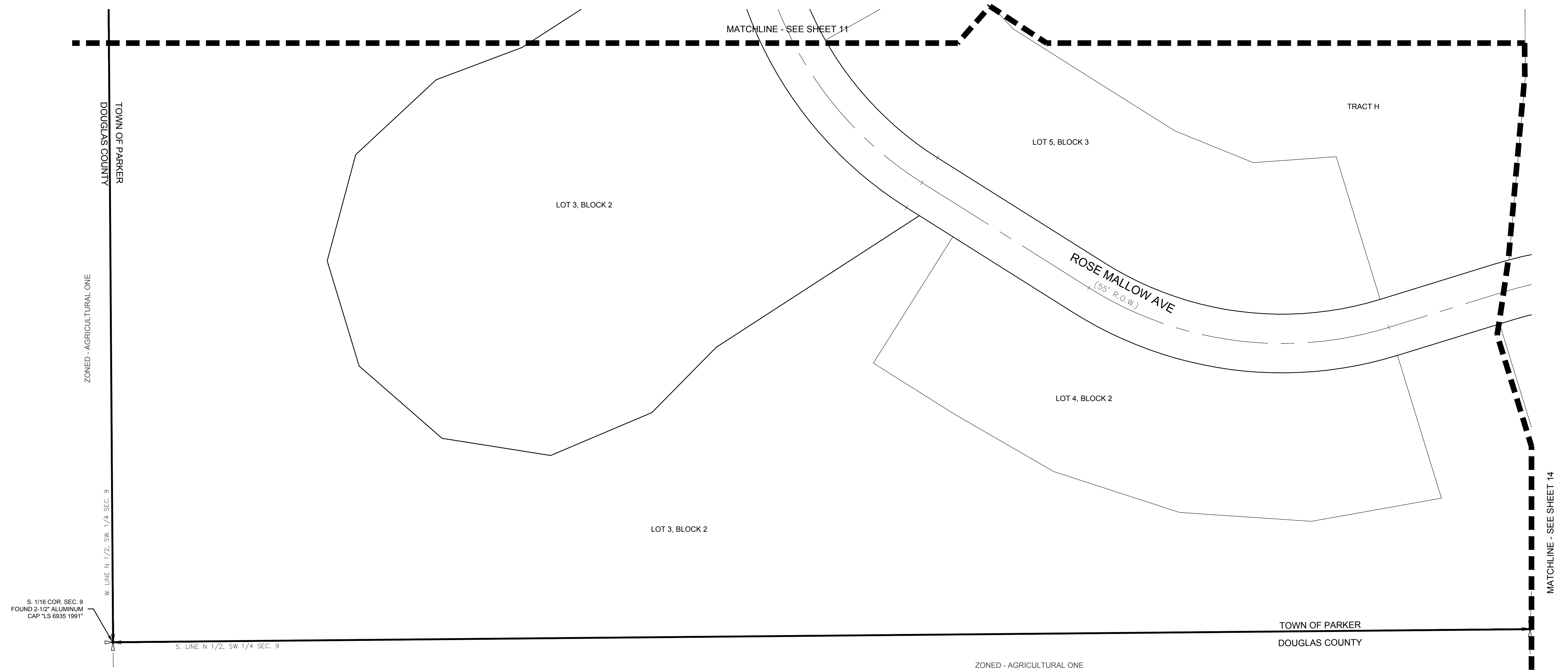


ENGINEER/SURVEYOR

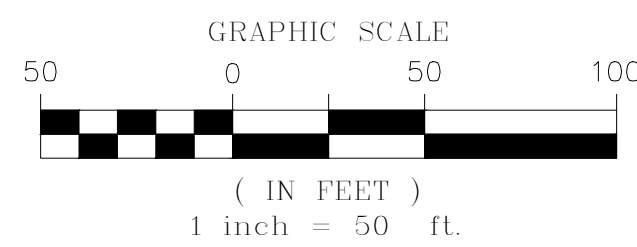
CVL Consultants
of Colorado, Inc.
10333 E. Dry Creek Rd., Suite 240
Englewood, CO 80112
Tel: (720) 482-9526 / Fax: (720) 482-9546

TRAILS AT CROWFOOT SUBDIVISION FILING NO. 1 ADDRESS PLAT

A PART OF THE SECTIONS 4, 8 AND 9, TOWNSHIP 7 SOUTH, RANGE 66 WEST OF THE 6th PRINCIPAL MERIDIAN,
TOWN OF PARKER, COUNTY OF DOUGLAS, STATE OF COLORADO
SHEET 13 OF 14



LEGEND	
	FND. SECTION CORNER AS DESCRIBED
	R.O.W. RIGHT-OF-WAY
	S.W.U.E. SIDEWALK & UTILITY EASEMENT
	U.E. UTILITY EASEMENT
	D.U.E. DRAINAGE AND UTILITY EASEMENT
	A.E. ACCESS EASEMENT
	G.E. GAS EASEMENT

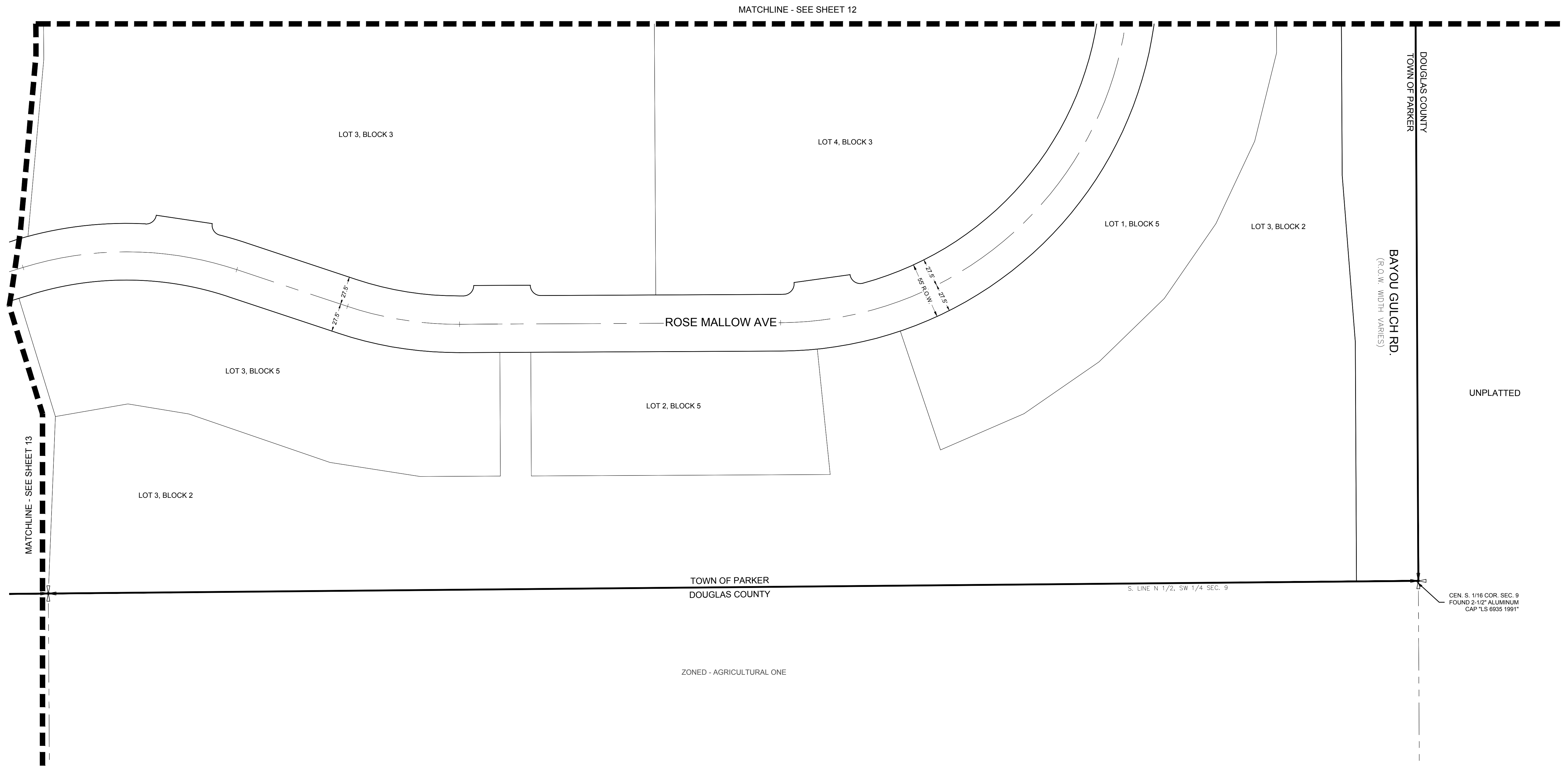


ENGINEER/SURVEYOR

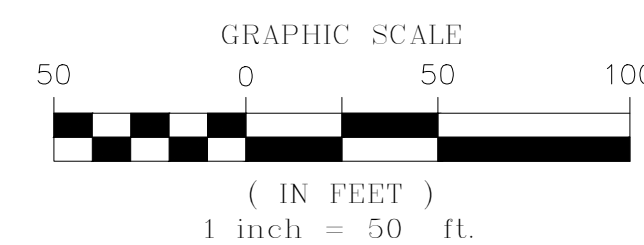
CVL Consultants
of Colorado, Inc.
10333 E. Dry Creek Rd., Suite 240
Englewood, CO 80112
Tel: (720) 482-9526 / Fax: (720) 482-9546

TRAILS AT CROWFOOT SUBDIVISION FILING NO. 1 ADDRESS PLAT

A PART OF THE SECTIONS 4, 8 AND 9, TOWNSHIP 7 SOUTH, RANGE 66 WEST OF THE 6th PRINCIPAL MERIDIAN,
TOWN OF PARKER, COUNTY OF DOUGLAS, STATE OF COLORADO
SHEET 14 OF 14



LEGEND	
	FND. SECTION CORNER AS DESCRIBED
	R.O.W. RIGHT-OF-WAY
	S.W.U.E. SIDEWALK & UTILITY EASEMENT
	U.E. UTILITY EASEMENT
	D.U.E. DRAINAGE AND UTILITY EASEMENT
	A.E. ACCESS EASEMENT
	G.E. GAS EASEMENT



ENGINEER/SURVEYOR
CVL Consultants
of Colorado, Inc.
10333 E. Dry Creek Rd., Suite 240
Englewood, CO 80112
Tel: (720) 482-9526 / Fax: (720) 482-9546