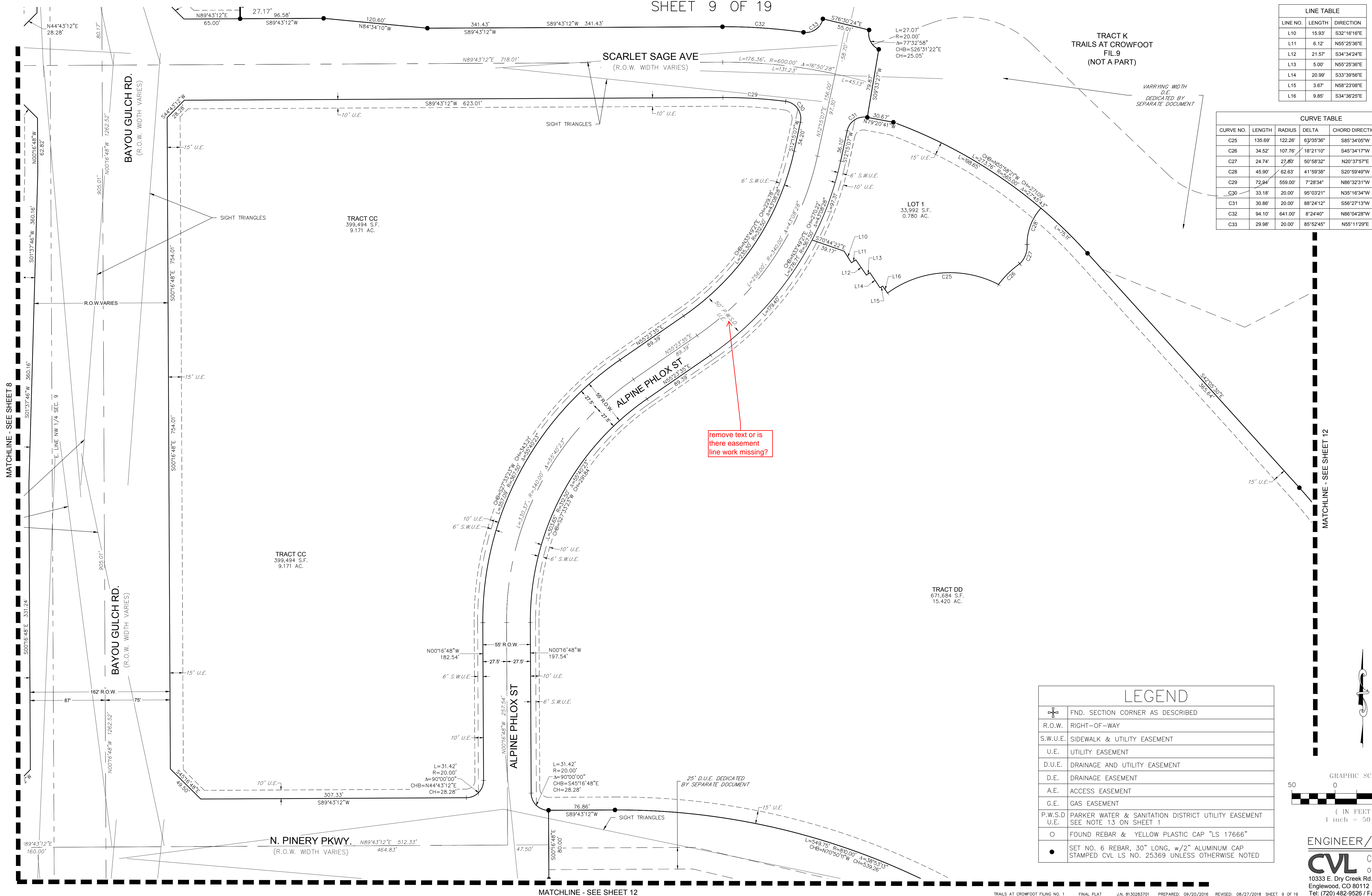


# TRAILS AT CROWFOOT FILING NO. 1

A PART OF THE SECTIONS 4, 8 AND 9, TOWNSHIP 7 SOUTH, RANGE 66 WEST OF THE 6th PRINCIPAL MERIDIAN,  
TOWN OF PARKER, COUNTY OF DOUGLAS, STATE OF COLORADO

SHEET 9 OF 19

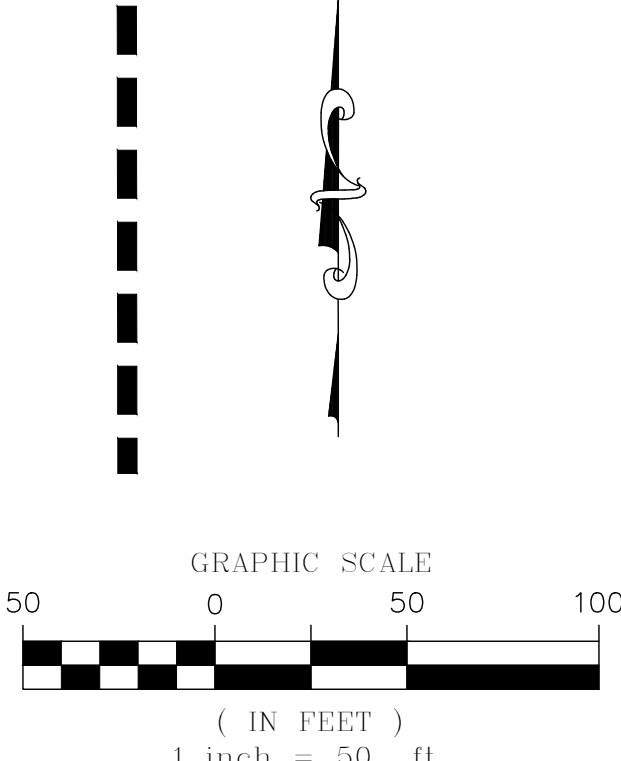


LINE TABLE		
LINE NO.	LENGTH	DIRECTION
L10	15.93'	S32°16'16"E
L11	6.12'	N55°25'36"E
L12	21.57'	S34°34'24"E
L13	5.00'	N55°25'36"E
L14	20.99'	S33°39'56"E
L15	3.67'	N58°23'08"E
L16	9.85'	S34°36'25"E

CURVE TABLE					
CURVE NO.	LENGTH	RADIUS	DELTA	CHORD DIRECTION	CHORD LENGTH
C25	135.69'	122.26'	63°35'36"	S85°34'05"W	128.84'
C26	34.52'	107.76'	18°21'10"	S45°34'17"W	34.37'
C27	24.74'	27.80'	50°58'32"	N20°37'57"E	23.93'
C28	45.90'	62.63'	41°59'38"	S20°59'49"W	44.88'
C29	72.94'	559.00'	7°28'34"	N86°32'31"W	72.89'
C30	33.18'	20.00'	95°03'21"	N35°16'34"W	29.50'
C31	30.86'	20.00'	88°24'12"	S56°27'13"W	27.89'
C32	94.10'	641.00'	8°24'40"	N86°04'28"W	94.02'
C33	29.98'	20.00'	85°52'45"	N55°11'29"E	27.25'

remove text or is there easement line work missing?

LEGEND	
	FND. SECTION CORNER AS DESCRIBED
	R.O.W. RIGHT-OF-WAY
	S.W.U.E. SIDEWALK & UTILITY EASEMENT
	U.E. UTILITY EASEMENT
	D.U.E. DRAINAGE AND UTILITY EASEMENT
	D.E. DRAINAGE EASEMENT
	A.E. ACCESS EASEMENT
	G.E. GAS EASEMENT
	P.W.S.D. PARKER WATER & SANITATION DISTRICT UTILITY EASEMENT
	U.E. SEE NOTE 13 ON SHEET 1
	FOUND REBAR & YELLOW PLASTIC CAP "LS 17666"
	SET NO. 6 REBAR, 30" LONG, w/2" ALUMINUM CAP STAMPED CVL LS NO. 25369 UNLESS OTHERWISE NOTED



MATCHLINE - SEE SHEET 8

MATCHLINE - SEE SHEET 12

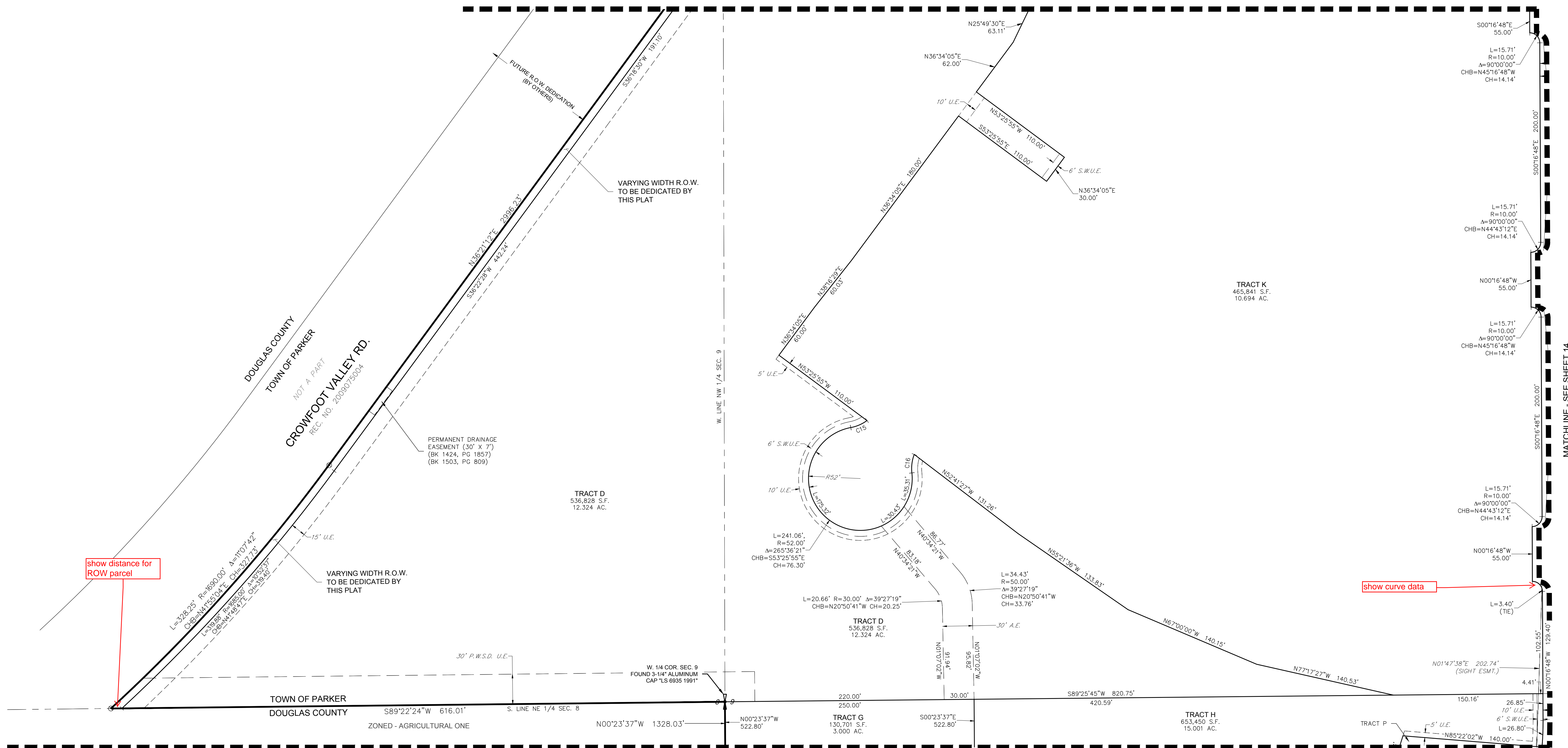
MATCHLINE - SEE SHEET 12

ENGINEER/SURVEYOR  
**CVL** Consultants of Colorado, Inc.  
 10333 E. Dry Creek Rd., Suite 240  
 Englewood, CO 80112  
 Tel: (720) 482-9526 / Fax: (720) 482-9546

# TRAILS AT CROWFOOT FILING NO. 1

A PART OF THE SECTIONS 4, 8 AND 9, TOWNSHIP 7 SOUTH, RANGE 66 WEST OF THE 6th PRINCIPAL MERIDIAN,  
TOWN OF PARKER, COUNTY OF DOUGLAS, STATE OF COLORADO  
SHEET 13 OF 19

MATCHLINE - SEE SHEET 10



show distance for ROW parcel

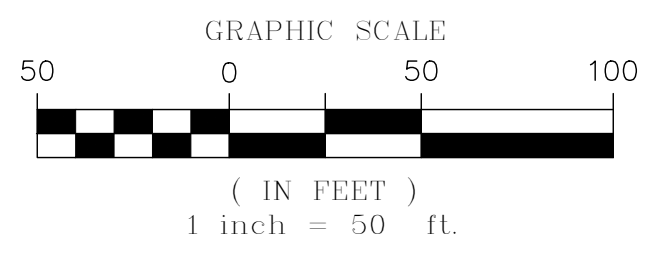
show curve data

## LEGEND

	FND. SECTION CORNER AS DESCRIBED
	R.O.W. RIGHT-OF-WAY
	S.W.U.E. SIDEWALK & UTILITY EASEMENT
	U.E. UTILITY EASEMENT
	D.U.E. DRAINAGE AND UTILITY EASEMENT
	A.E. ACCESS EASEMENT
	G.E. GAS EASEMENT
	P.W.S.D. U.E. PARKER WATER & SANITATION DISTRICT UTILITY EASEMENT SEE NOTE 13 ON SHEET 1
	O FOUND REBAR & YELLOW PLASTIC CAP "LS 17666"
	• SET NO. 6 REBAR, 30" LONG, w/2" ALUMINUM CAP STAMPED CVL LS NO. 25369 UNLESS OTHERWISE NOTED

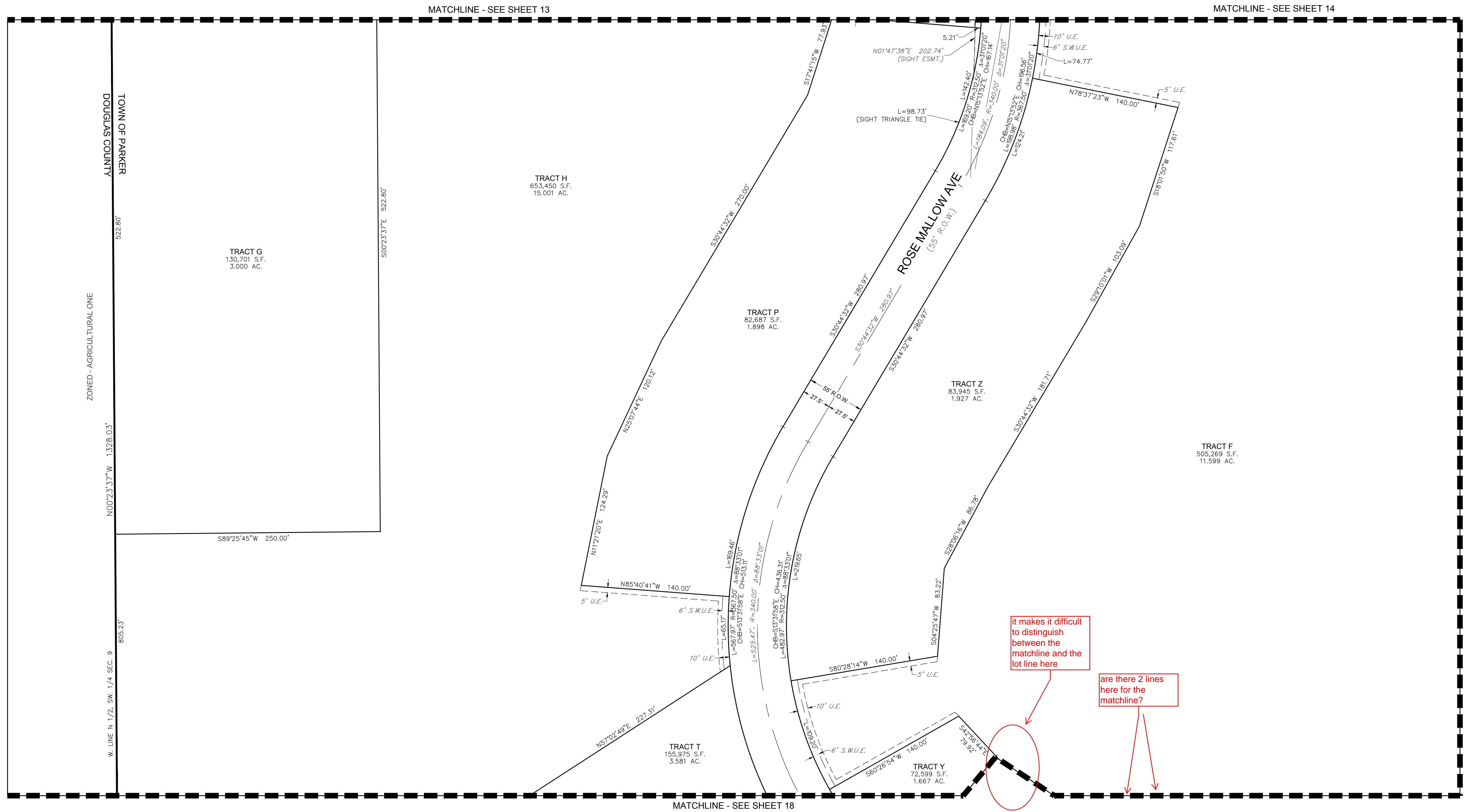
## CURVE TABLE

CURVE NO.	LENGTH	RADIUS	DELTA	CHORD DIRECTION	CHORD LENGTH
C15	17.88'	40.00'	25°36'26"	N86°34'02"E	17.73'
C16	18.86'	40.00'	27°00'55"	S7°16'21"W	18.69'

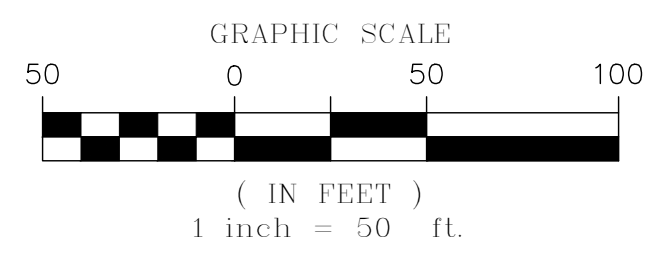


# TRAILS AT CROWFOOT FILING NO. 1

A PART OF THE SECTIONS 4, 8 AND 9, TOWNSHIP 7 SOUTH, RANGE 66 WEST OF THE 6th PRINCIPAL MERIDIAN,  
TOWN OF PARKER, COUNTY OF DOUGLAS, STATE OF COLORADO  
SHEET 16 OF 19

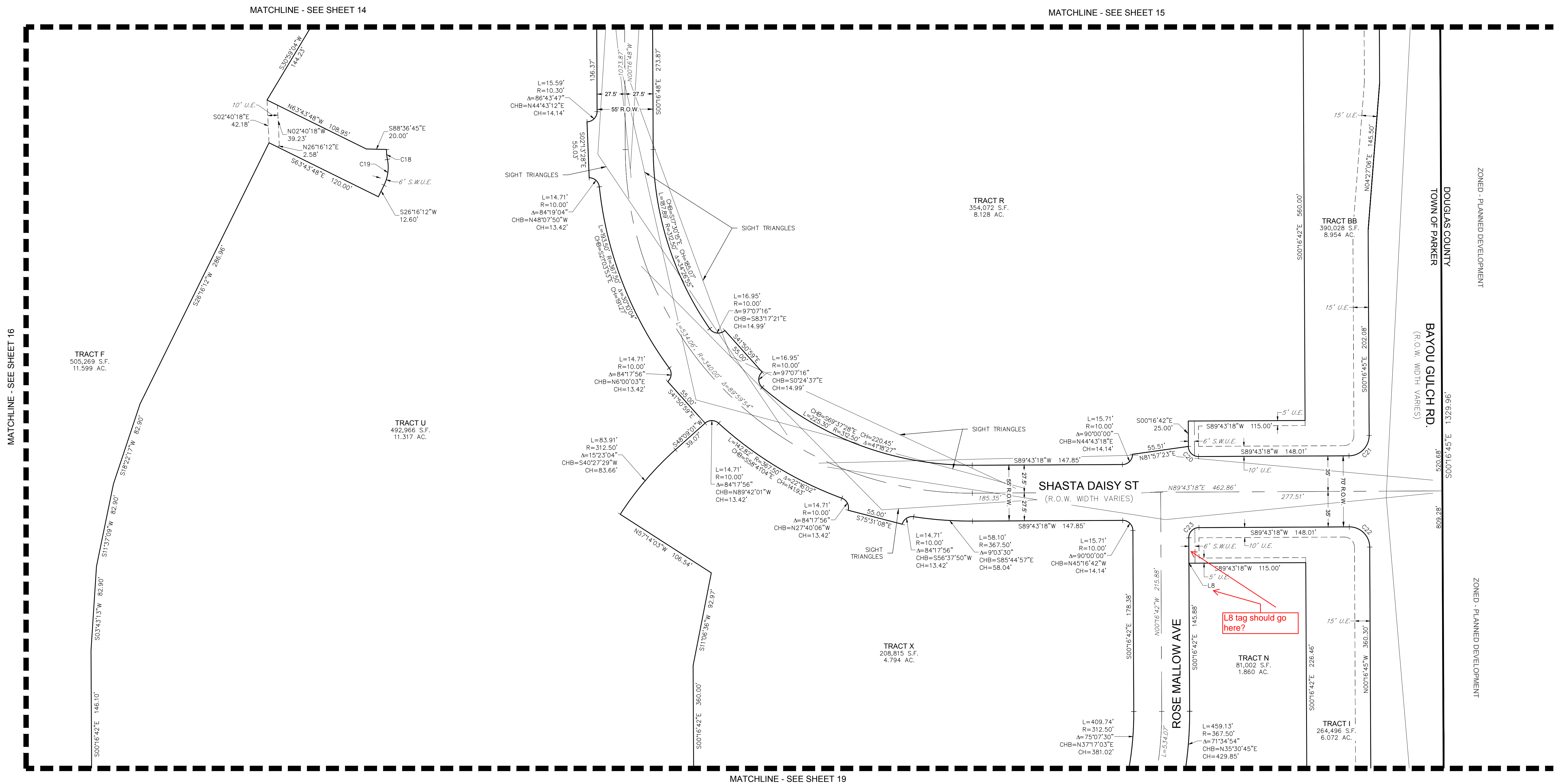


LEGEND	
	FND. SECTION CORNER AS DESCRIBED
	R.O.W. RIGHT-OF-WAY
	S.W.U.E. SIDEWALK & UTILITY EASEMENT
	U.E. UTILITY EASEMENT
	D.U.E. DRAINAGE AND UTILITY EASEMENT
	A.E. ACCESS EASEMENT
	G.E. GAS EASEMENT



# TRAILS AT CROWFOOT FILING NO. 1

A PART OF THE SECTIONS 4, 8 AND 9, TOWNSHIP 7 SOUTH, RANGE 66 WEST OF THE 6th PRINCIPAL MERIDIAN,  
TOWN OF PARKER, COUNTY OF DOUGLAS, STATE OF COLORADO  
SHEET 17 OF 19



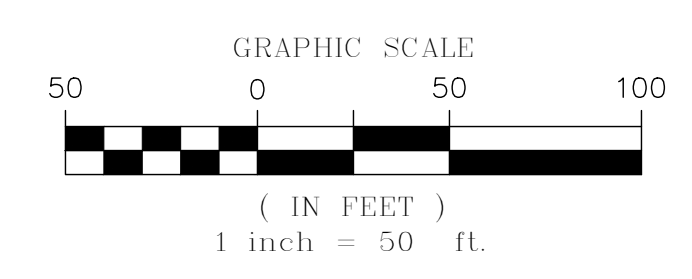
MATCHLINE - SEE SHEET 16

MATCHLINE - SEE SHEET 14

MATCHLINE - SEE SHEET 15

MATCHLINE - SEE SHEET 19

LEGEND	
	FND. SECTION CORNER AS DESCRIBED
	RIGHT-OF-WAY
	SIDEWALK & UTILITY EASEMENT
	UTILITY EASEMENT
	DRAINAGE AND UTILITY EASEMENT
	ACCESS EASEMENT
	GAS EASEMENT



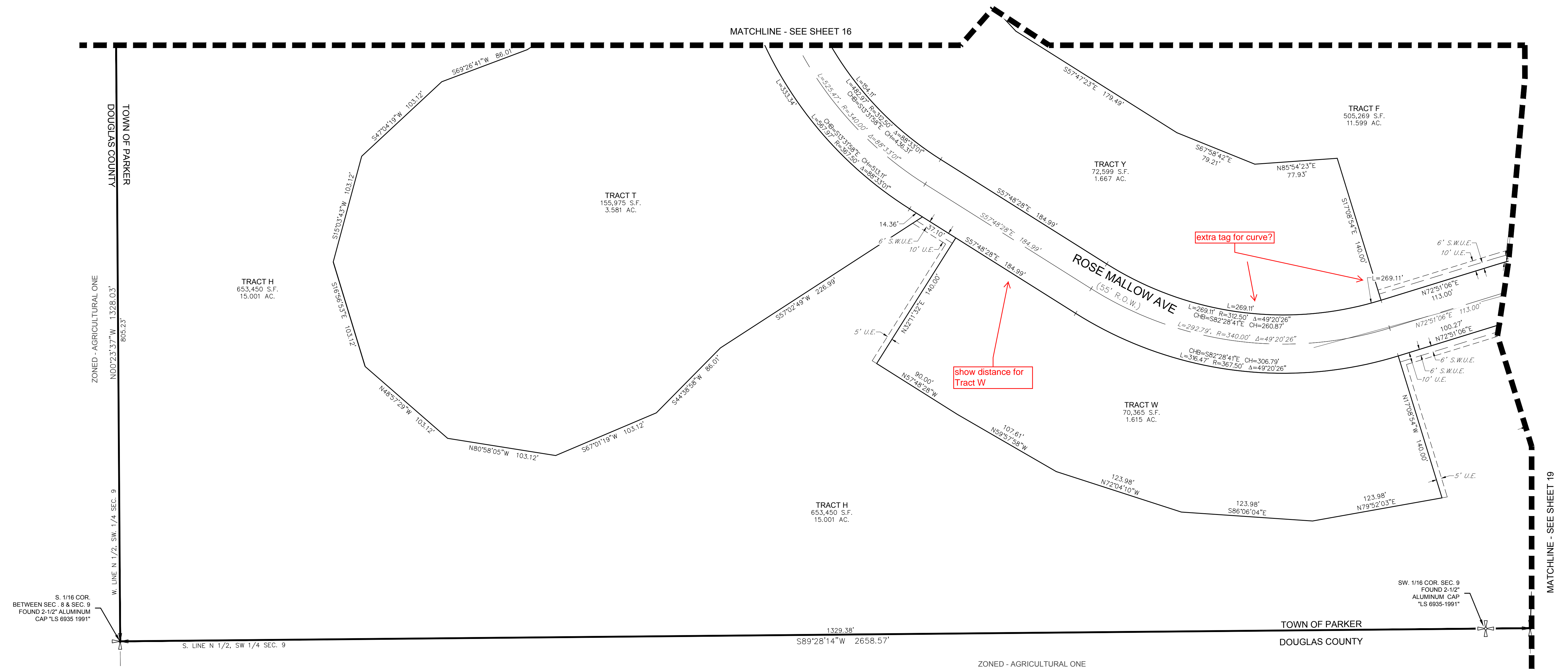
CURVE TABLE					
CURVE NO.	LENGTH	RADIUS	DELTA	CHORD DIRECTION	CHORD LENGTH
C18	9.85'	45.00'	12°32'44"	S4°53'07"E	9.83'
C19	26.13'	40.00'	37°25'41"	N7°33'22"E	25.67'
C20	15.71'	10.00'	90°00'00"	S45°16'42"E	14.14'
C21	31.42'	20.00'	90°00'03"	N44°43'16"E	28.28'
C22	31.42'	20.00'	89°59'57"	N45°16'44"W	28.28'
C23	15.71'	10.00'	90°00'00"	S44°43'18"W	14.14'

LINE TABLE		
LINE NO.	LENGTH	DIRECTION
L8	25.00'	S0°16'42"E

ENGINEER/SURVEYOR  
**CVL** Consultants  
of Colorado, Inc.  
10333 E. Dry Creek Rd., Suite 240  
Englewood, CO 80112  
Tel: (720) 482-9526 / Fax: (720) 482-9546

# TRAILS AT CROWFOOT FILING NO. 1

A PART OF THE SECTIONS 4, 8 AND 9, TOWNSHIP 7 SOUTH, RANGE 66 WEST OF THE 6th PRINCIPAL MERIDIAN,  
TOWN OF PARKER, COUNTY OF DOUGLAS, STATE OF COLORADO  
SHEET 18 OF 19



LEGEND	
	FND. SECTION CORNER AS DESCRIBED
	R.O.W. RIGHT-OF-WAY
	S.W.U.E. SIDEWALK & UTILITY EASEMENT
	U.E. UTILITY EASEMENT
	D.U.E. DRAINAGE AND UTILITY EASEMENT
	A.E. ACCESS EASEMENT
	G.E. GAS EASEMENT

