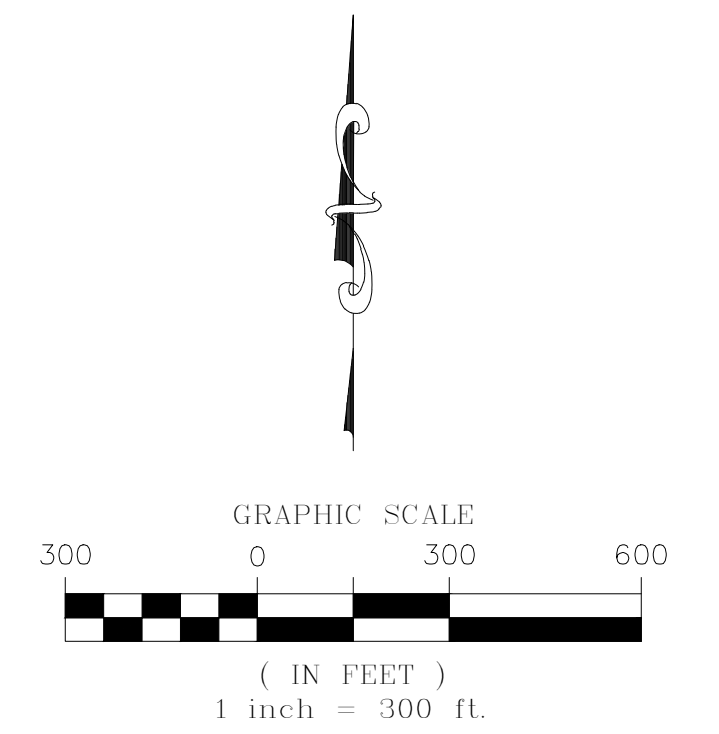
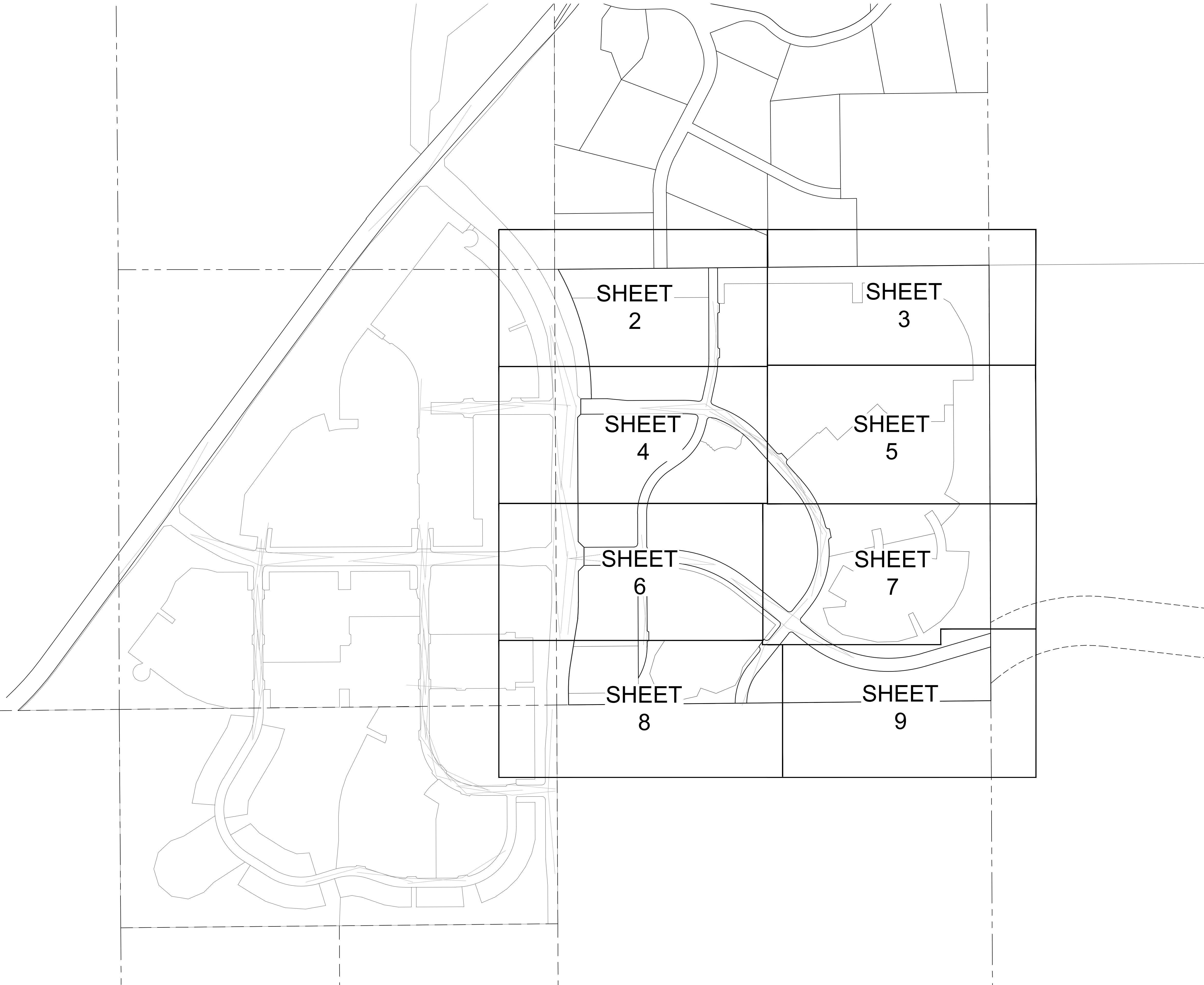


TRAILS AT CROWFOOT SUBDIVISION FILING NO. 9 ADDRESS PLAT

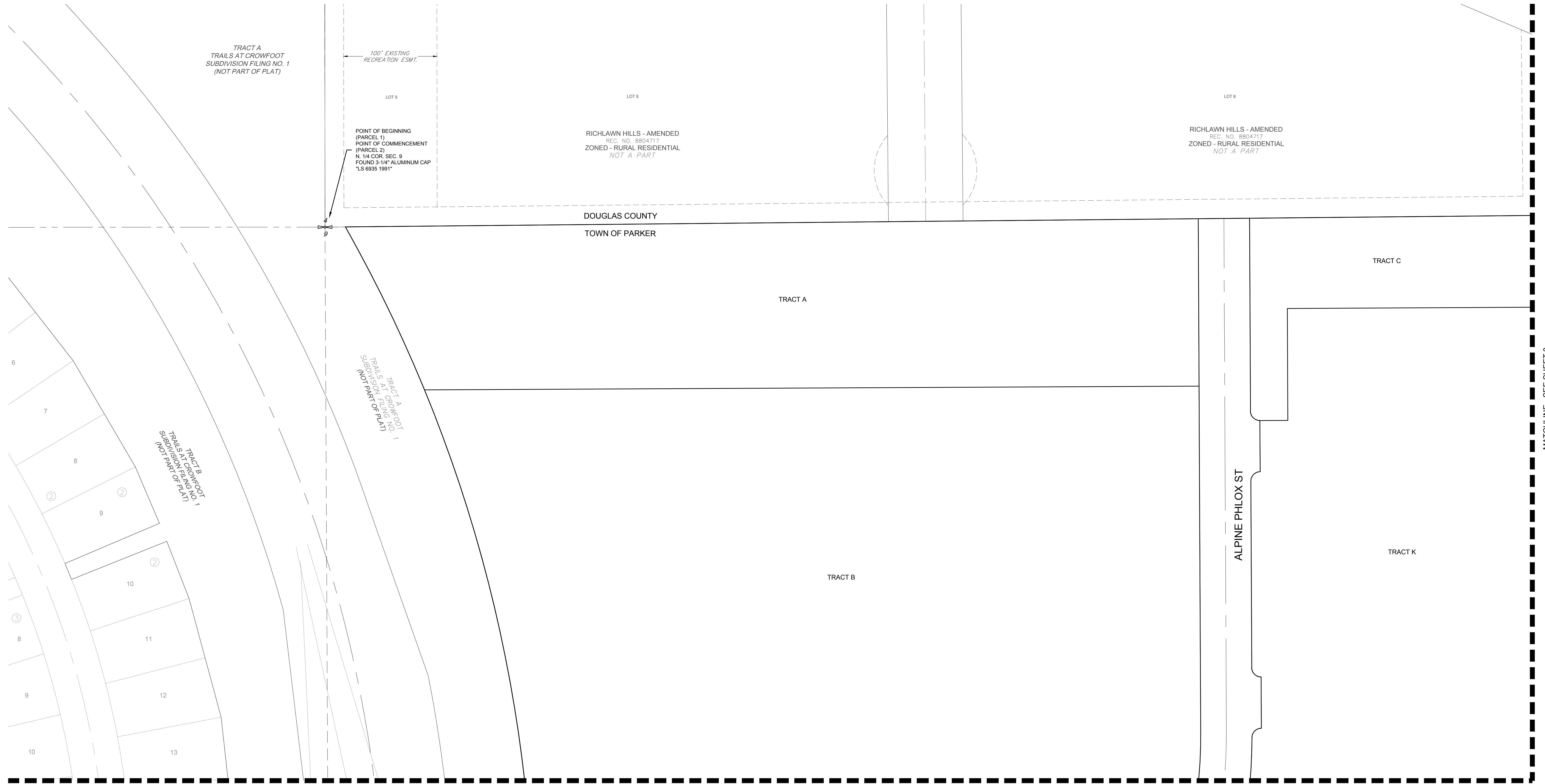
A PART OF THE SECTIONS 4, 8 AND 9, TOWNSHIP 7 SOUTH, RANGE 66 WEST OF THE 6th PRINCIPAL MERIDIAN,
TOWN OF PARKER, COUNTY OF DOUGLAS, STATE OF COLORADO
SHEET 1 OF 9



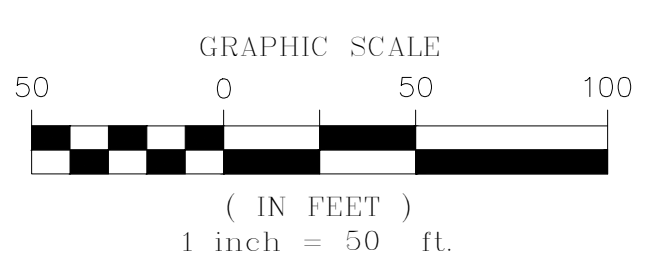
ENGINEER/SURVEYOR
CVL Consultants
of Colorado, Inc.
10333 E. Dry Creek Rd., Suite 240
Englewood, CO 80112
Tel: (720) 482-9526 / Fax: (720) 482-9546

TRAILS AT CROWFOOT SUBDIVISION FILING NO. 9 ADDRESS PLAT

A PART OF THE SECTIONS 4, 8 AND 9, TOWNSHIP 7 SOUTH, RANGE 66 WEST OF THE 6th PRINCIPAL MERIDIAN,
TOWN OF PARKER, COUNTY OF DOUGLAS, STATE OF COLORADO
SHEET 2 OF 9



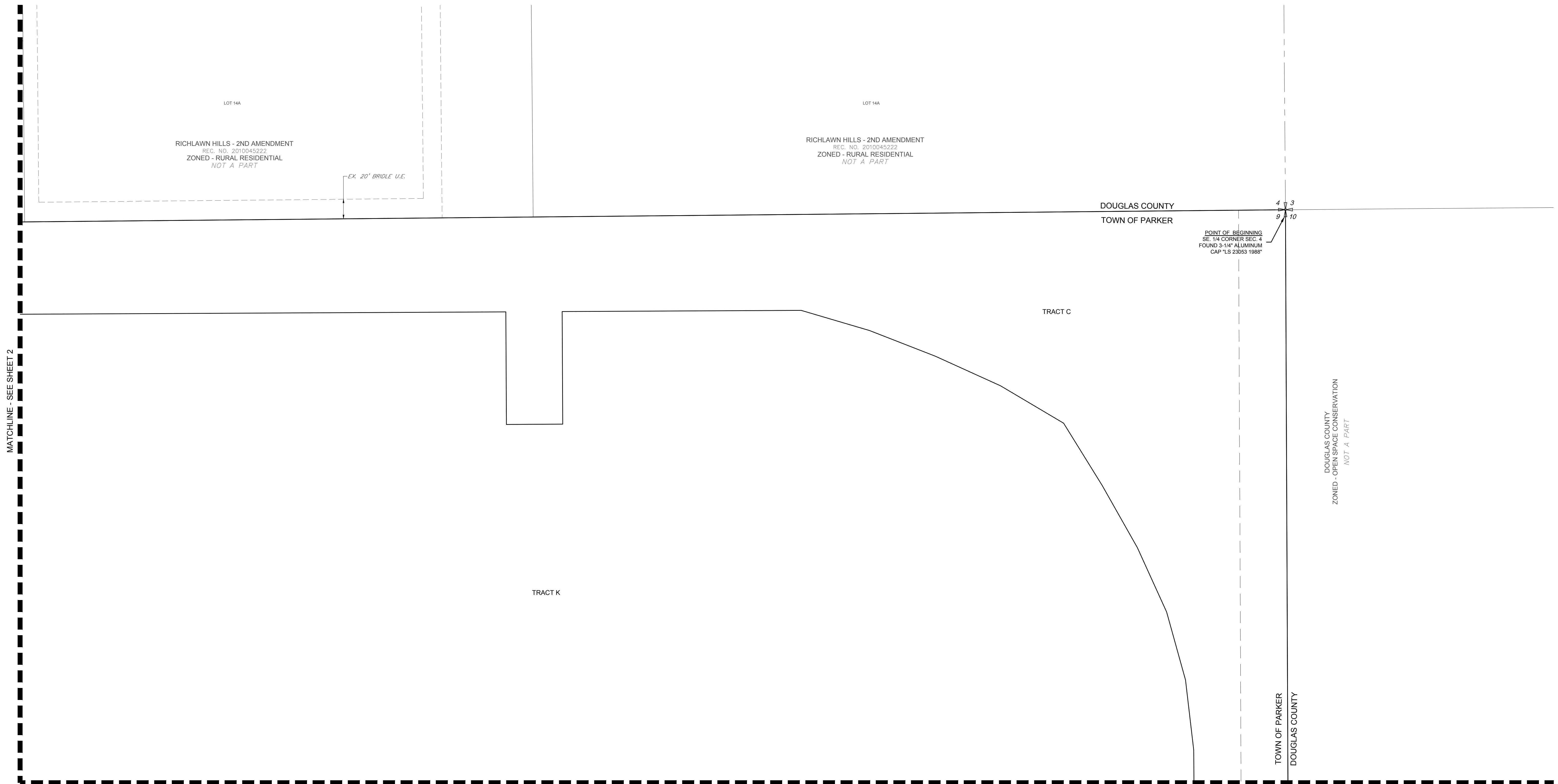
LEGEND	
	FND. SECTION CORNER AS DESCRIBED
	R.O.W. RIGHT-OF-WAY
	S.W.U.E. SIDEWALK & UTILITY EASEMENT
	U.E. UTILITY EASEMENT
	D.U.E. DRAINAGE AND UTILITY EASEMENT
	A.E. ACCESS EASEMENT
	G.E. GAS EASEMENT
	EX U.E. EXISTING UTILITY EASEMENT



ENGINEER/SURVEYOR
CVL Consultants
of Colorado, Inc.
10333 E. Dry Creek Rd., Suite 240
Englewood, CO 80112
Tel: (720) 482-9526 / Fax: (720) 482-9546

TRAILS AT CROWFOOT SUBDIVISION FILING NO. 9 ADDRESS PLAT

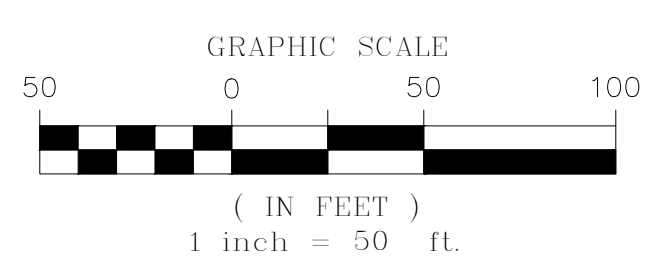
A PART OF THE SECTIONS 4, 8 AND 9, TOWNSHIP 7 SOUTH, RANGE 66 WEST OF THE 6th PRINCIPAL MERIDIAN,
TOWN OF PARKER, COUNTY OF DOUGLAS, STATE OF COLORADO
SHEET 3 OF 9



MATCHLINE - SEE SHEET 2

MATCHLINE - SEE SHEET 5

LEGEND	
	FND. SECTION CORNER AS DESCRIBED
	R.O.W. RIGHT-OF-WAY
	S.W.U.E. SIDEWALK & UTILITY EASEMENT
	U.E. UTILITY EASEMENT
	D.U.E. DRAINAGE AND UTILITY EASEMENT
	A.E. ACCESS EASEMENT
	G.E. GAS EASEMENT
	EX U.E. EXISTING UTILITY EASEMENT



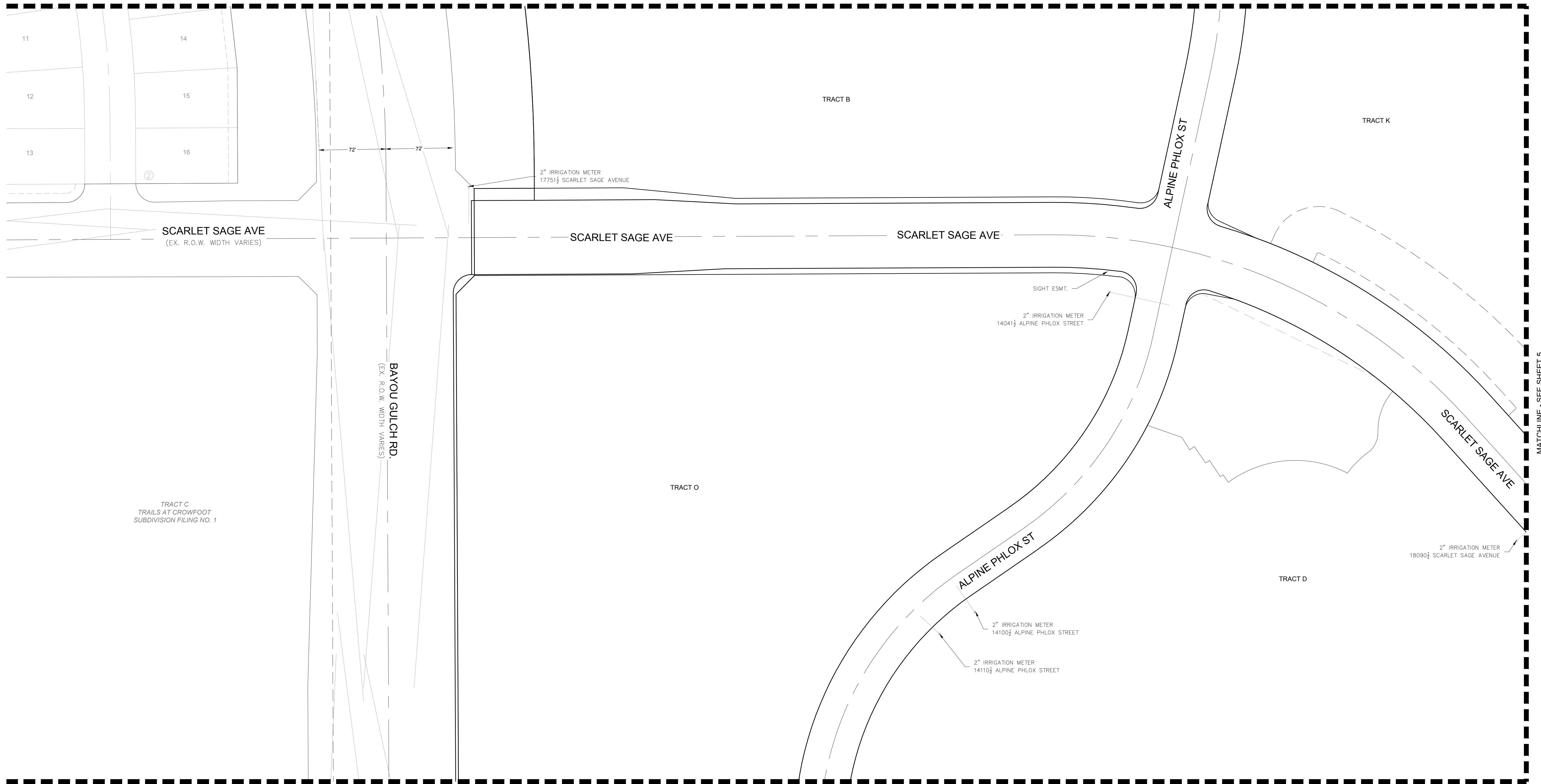
ENGINEER/SURVEYOR
CVL Consultants
of Colorado, Inc.
10333 E. Dry Creek Rd., Suite 240
Englewood, CO 80112
Tel: (720) 482-9526 / Fax: (720) 482-9546

TRAILS AT CROWFOOT SUBDIVISION FILING NO. 9 ADDRESS PLAT

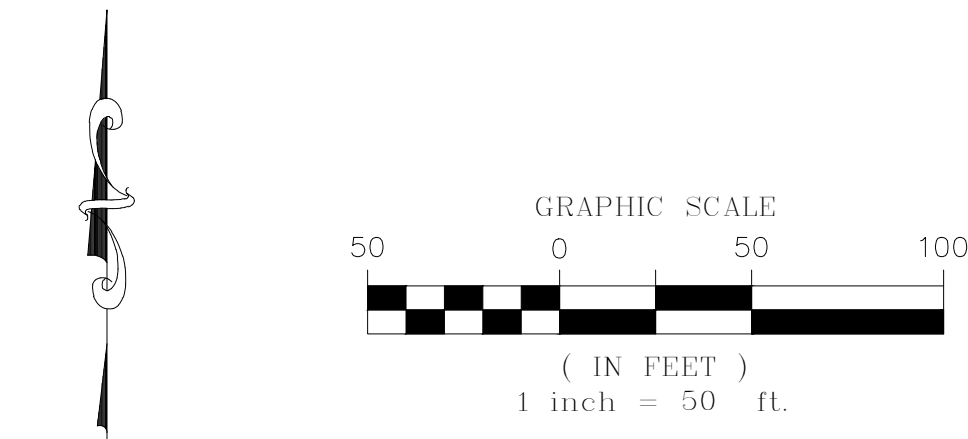
A PART OF THE SECTIONS 4, 8 AND 9, TOWNSHIP 7 SOUTH, RANGE 66 WEST OF THE 6th PRINCIPAL MERIDIAN,
TOWN OF PARKER, COUNTY OF DOUGLAS, STATE OF COLORADO

SHEET 4 OF 9

MATCHLINE - SEE SHEET 2



LEGEND	
	FND. SECTION CORNER AS DESCRIBED
	R.O.W. RIGHT-OF-WAY
	S.W.U.E. SIDEWALK & UTILITY EASEMENT
	U.E. UTILITY EASEMENT
	D.U.E. DRAINAGE AND UTILITY EASEMENT
	A.E. ACCESS EASEMENT
	G.E. GAS EASEMENT
	EX U.E. EXISTING UTILITY EASEMENT

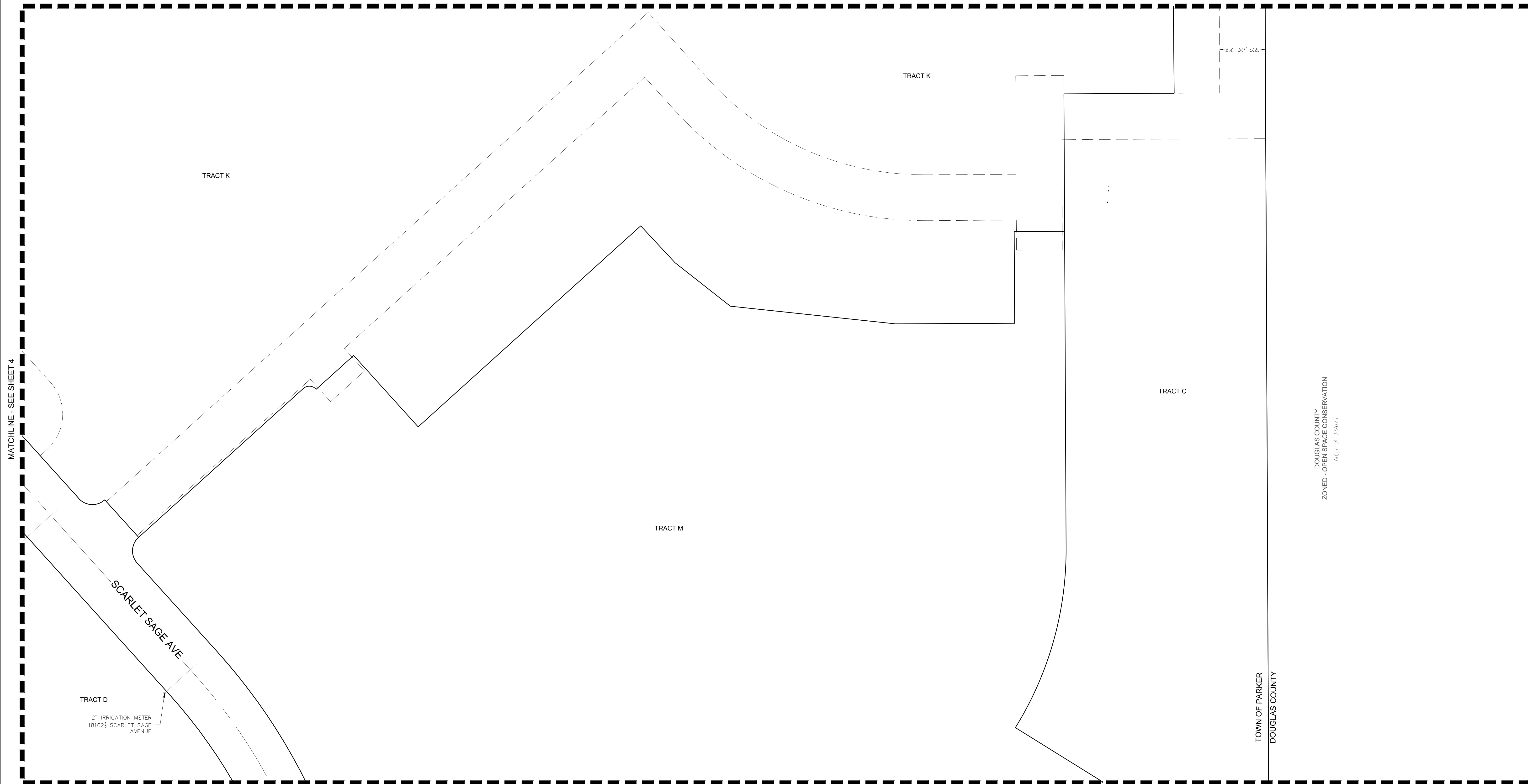


ENGINEER/SURVEYOR
CVL Consultants
of Colorado, Inc.
10333 E. Dry Creek Rd., Suite 240
Englewood, CO 80112
Tel: (720) 482-9526 / Fax: (720) 482-9546

TRAILS AT CROWFOOT SUBDIVISION FILING NO. 9 ADDRESS PLAT

A PART OF THE SECTIONS 4, 8 AND 9, TOWNSHIP 7 SOUTH, RANGE 66 WEST OF THE 6th PRINCIPAL MERIDIAN,
TOWN OF PARKER, COUNTY OF DOUGLAS, STATE OF COLORADO
SHEET 5 OF 9

MATCHLINE - SEE SHEET 3



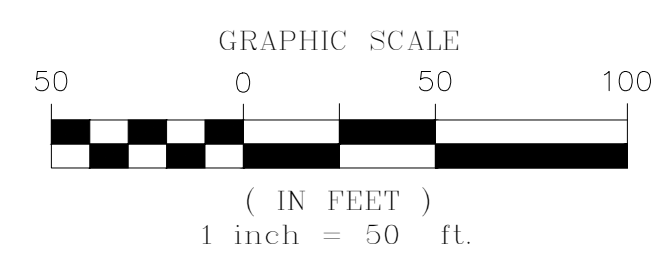
MATCHLINE - SEE SHEET 4

DOUGLAS COUNTY
ZONED - OPEN SPACE CONSERVATION
NOT A PART

TOWN OF PARKER
DOUGLAS COUNTY

MATCHLINE - SEE SHEET 7

LEGEND	
	FND. SECTION CORNER AS DESCRIBED
	R.O.W. RIGHT-OF-WAY
	S.W.U.E. SIDEWALK & UTILITY EASEMENT
	U.E. UTILITY EASEMENT
	D.U.E. DRAINAGE AND UTILITY EASEMENT
	A.E. ACCESS EASEMENT
	G.E. GAS EASEMENT
	EX. U.E. EXISTING UTILITY EASEMENT

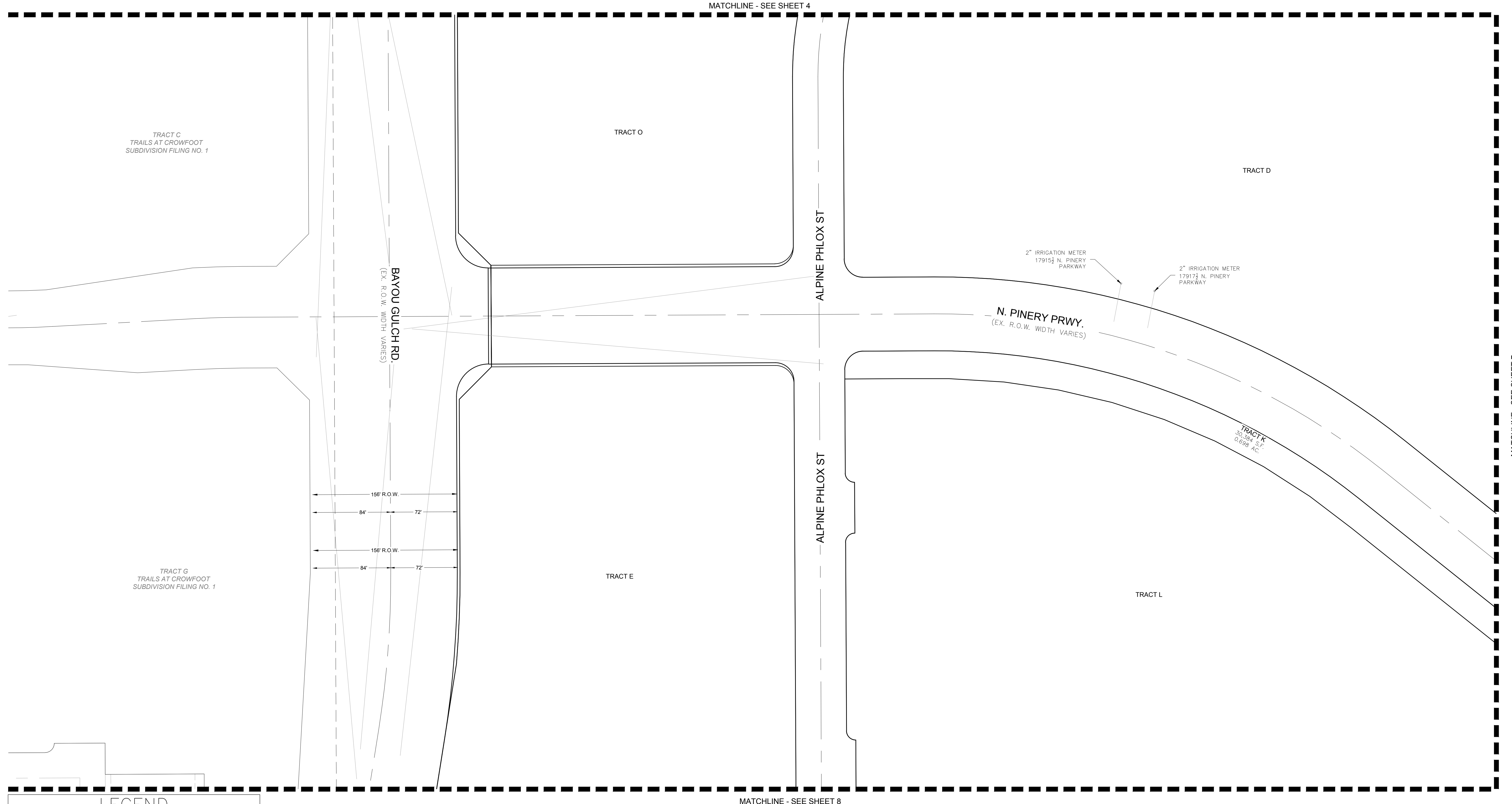


ENGINEER/SURVEYOR

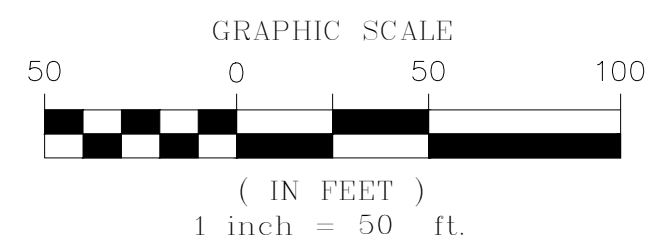
CVL Consultants
of Colorado, Inc.
10333 E. Dry Creek Rd., Suite 240
Englewood, CO 80112
Tel: (720) 482-9526 / Fax: (720) 482-9546

TRAILS AT CROWFOOT SUBDIVISION FILING NO. 9 ADDRESS PLAT

A PART OF THE SECTIONS 4, 8 AND 9, TOWNSHIP 7 SOUTH, RANGE 66 WEST OF THE 6th PRINCIPAL MERIDIAN,
TOWN OF PARKER, COUNTY OF DOUGLAS, STATE OF COLORADO
SHEET 6 OF 9



LEGEND	
	FND. SECTION CORNER AS DESCRIBED
	R.O.W. RIGHT-OF-WAY
	S.W.U.E. SIDEWALK & UTILITY EASEMENT
	U.E. UTILITY EASEMENT
	D.U.E. DRAINAGE AND UTILITY EASEMENT
	A.E. ACCESS EASEMENT
	G.E. GAS EASEMENT
	EX U.E. EXISTING UTILITY EASEMENT



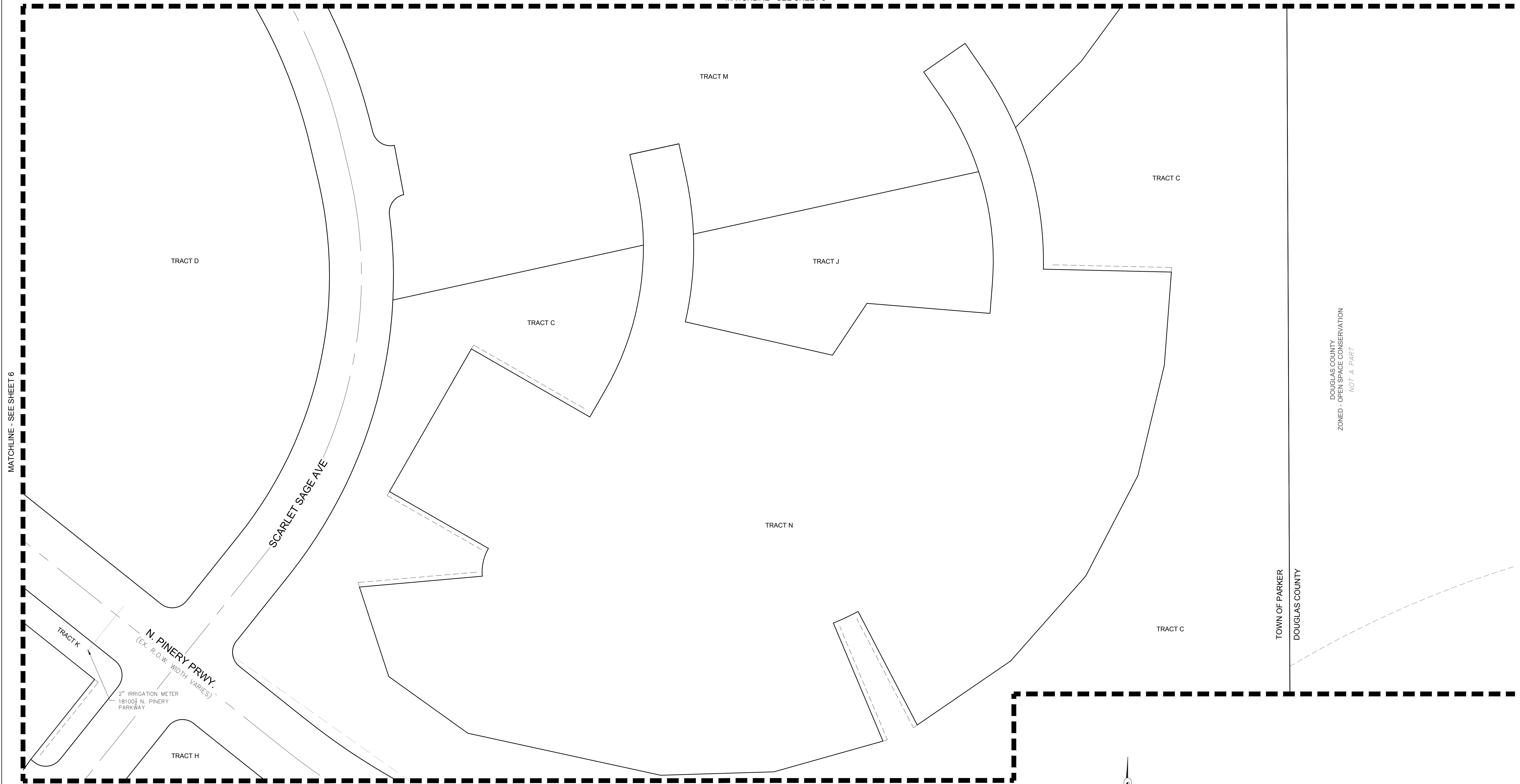
ENGINEER/SURVEYOR
CVL Consultants of Colorado, Inc.
 10333 E. Dry Creek Rd., Suite 240
 Englewood, CO 80112
 Tel: (720) 482-9526 / Fax: (720) 482-9546

TRAILS AT CROWFOOT SUBDIVISION FILING NO. 9 ADDRESS PLAT

A PART OF THE SECTIONS 4, 8 AND 9, TOWNSHIP 7 SOUTH, RANGE 66 WEST OF THE 6th PRINCIPAL MERIDIAN,
TOWN OF PARKER, COUNTY OF DOUGLAS, STATE OF COLORADO

SHEET 7 OF 9

MATCHLINE - SEE SHEET 5



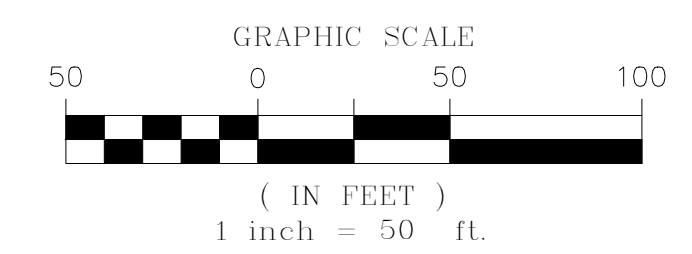
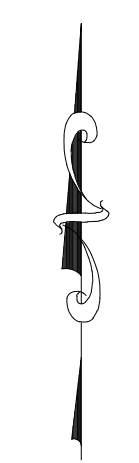
DOUGLAS COUNTY
ZONED - OPEN SPACE CONSERVATION
NOT A PART

TOWN OF PARKER
DOUGLAS COUNTY

LEGEND

	FND. SECTION CORNER AS DESCRIBED
	R.O.W. RIGHT-OF-WAY
	S.W.U.E. SIDEWALK & UTILITY EASEMENT
	U.E. UTILITY EASEMENT
	D.U.E. DRAINAGE AND UTILITY EASEMENT
	A.E. ACCESS EASEMENT
	G.E. GAS EASEMENT
	EX U.E. EXISTING UTILITY EASEMENT

MATCHLINE - SEE SHEET 9

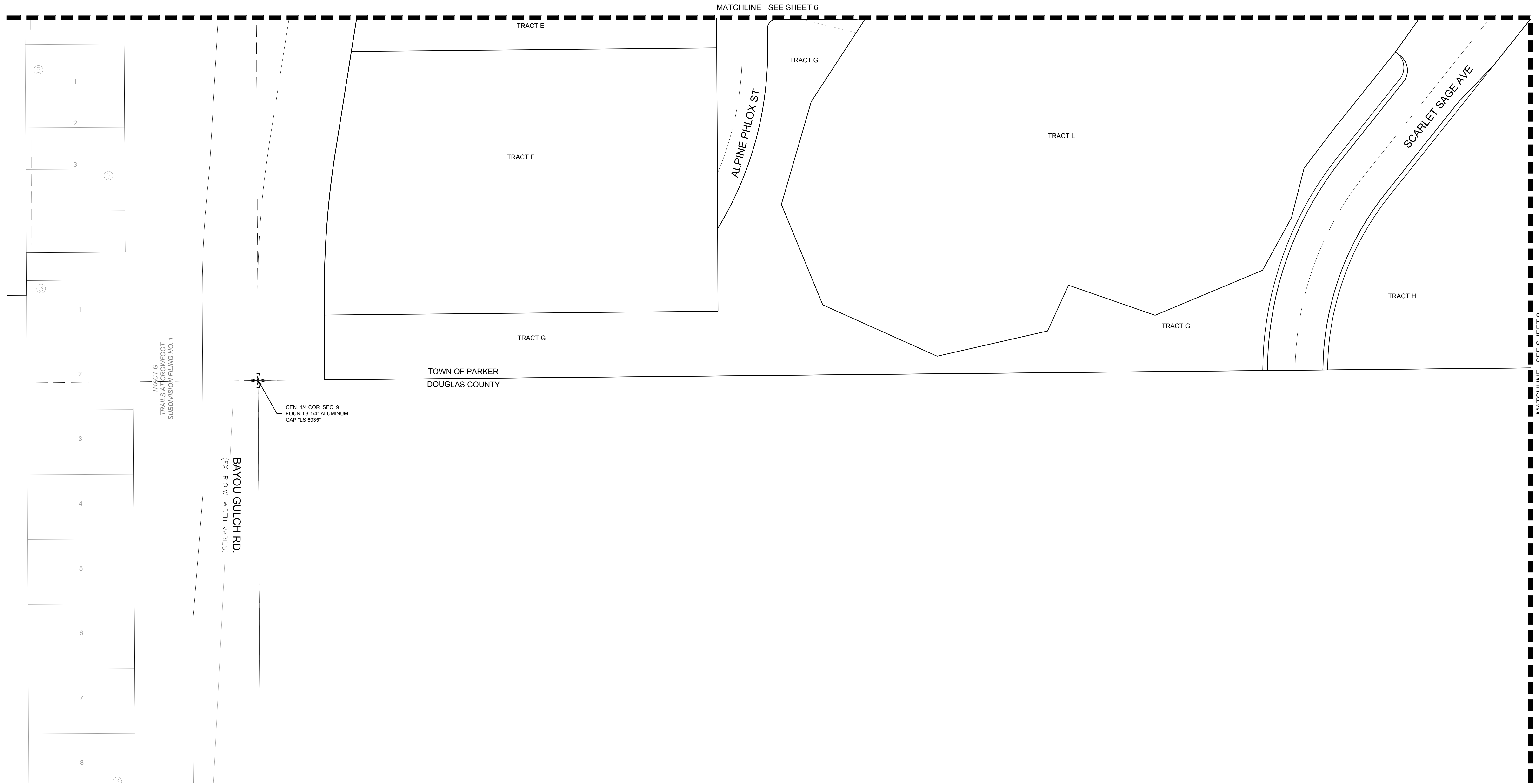


ENGINEER/SURVEYOR

CVL Consultants
of Colorado, Inc.
10333 E. Dry Creek Rd., Suite 240
Englewood, CO 80112
Tel: (720) 482-9526 / Fax: (720) 482-9546

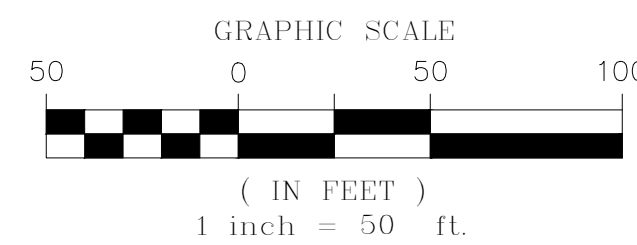
TRAILS AT CROWFOOT SUBDIVISION FILING NO. 9 ADDRESS PLAT

A PART OF THE SECTIONS 4, 8 AND 9, TOWNSHIP 7 SOUTH, RANGE 66 WEST OF THE 6th PRINCIPAL MERIDIAN,
TOWN OF PARKER, COUNTY OF DOUGLAS, STATE OF COLORADO
SHEET 8 OF 9



LEGEND

	FND. SECTION CORNER AS DESCRIBED
R.O.W.	RIGHT-OF-WAY
S.W.U.E.	SIDEWALK & UTILITY EASEMENT
U.E.	UTILITY EASEMENT
D.U.E.	DRAINAGE AND UTILITY EASEMENT
A.E.	ACCESS EASEMENT
G.E.	GAS EASEMENT
EX U.E.	EXISTING UTILITY EASEMENT

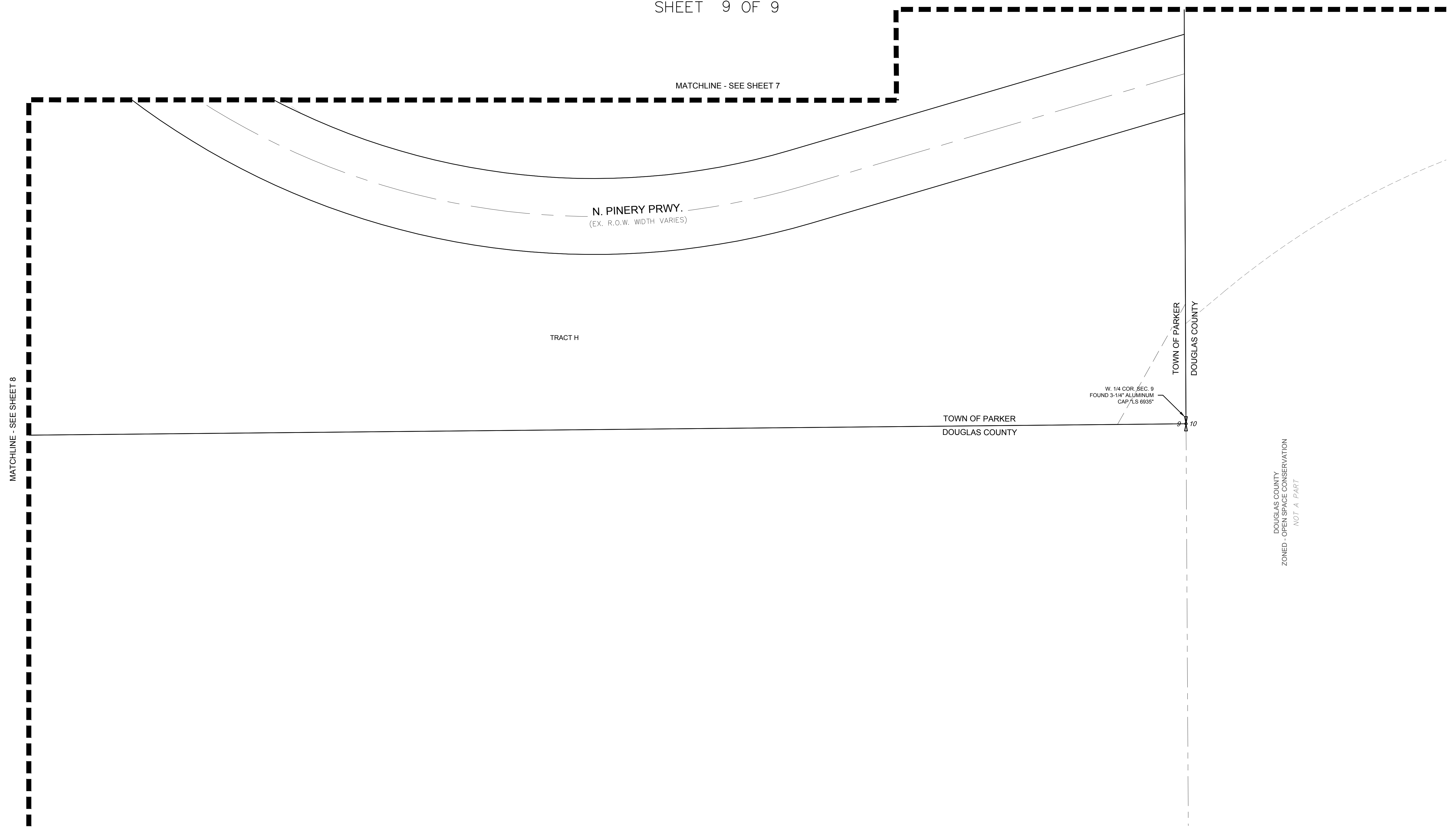


ENGINEER/SURVEYOR

CVL Consultants
of Colorado, Inc.
10333 E. Dry Creek Rd., Suite 240
Englewood, CO 80112
Tel: (720) 482-9526 / Fax: (720) 482-9546

TRAILS AT CROWFOOT SUBDIVISION FILING NO. 9 ADDRESS PLAT

A PART OF THE SECTIONS 4, 8 AND 9, TOWNSHIP 7 SOUTH, RANGE 66 WEST OF THE 6th PRINCIPAL MERIDIAN,
TOWN OF PARKER, COUNTY OF DOUGLAS, STATE OF COLORADO
SHEET 9 OF 9



MATCHLINE - SEE SHEET 8

MATCHLINE - SEE SHEET 7

N. PINERY PRWY.
(EX. R.O.W. WIDTH VARIES)

TRACT H

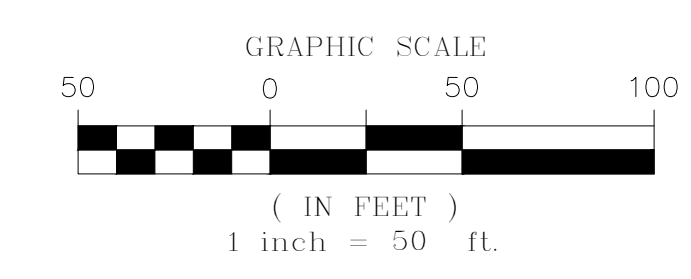
TOWN OF PARKER
DOUGLAS COUNTY

W. 1/4 COR. SEC. 9
FOUND 3-1/4" ALUMINUM
CAP /LS 6935"

TOWN OF PARKER
DOUGLAS COUNTY

DOUGLAS COUNTY
ZONED - OPEN SPACE CONSERVATION
NOT A PART

LEGEND	
	FND. SECTION CORNER AS DESCRIBED
	R.O.W. RIGHT-OF-WAY
	S.W.U.E. SIDEWALK & UTILITY EASEMENT
	U.E. UTILITY EASEMENT
	D.U.E. DRAINAGE AND UTILITY EASEMENT
	A.E. ACCESS EASEMENT
	G.E. GAS EASEMENT
	EX U.E. EXISTING UTILITY EASEMENT



ENGINEER/SURVEYOR
CVL Consultants
of Colorado, Inc.
10333 E. Dry Creek Rd., Suite 240
Englewood, CO 80112
Tel: (720) 482-9526 / Fax: (720) 482-9546