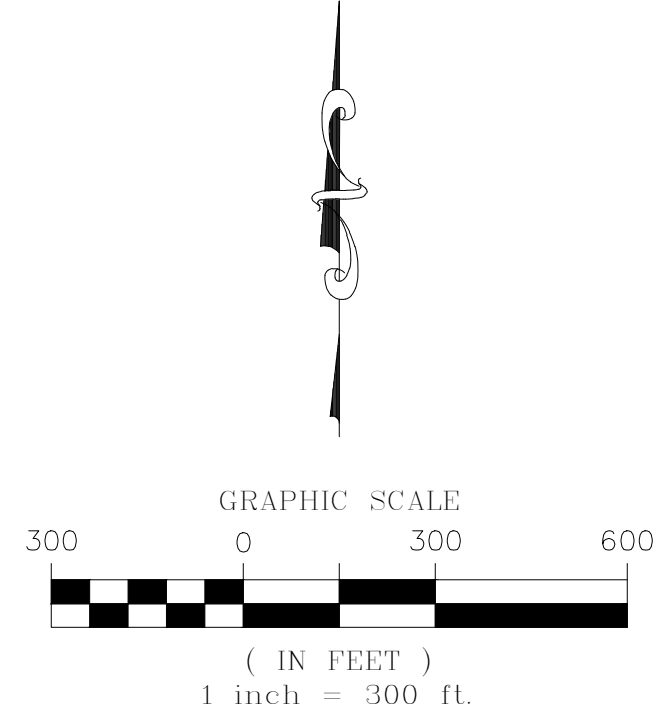
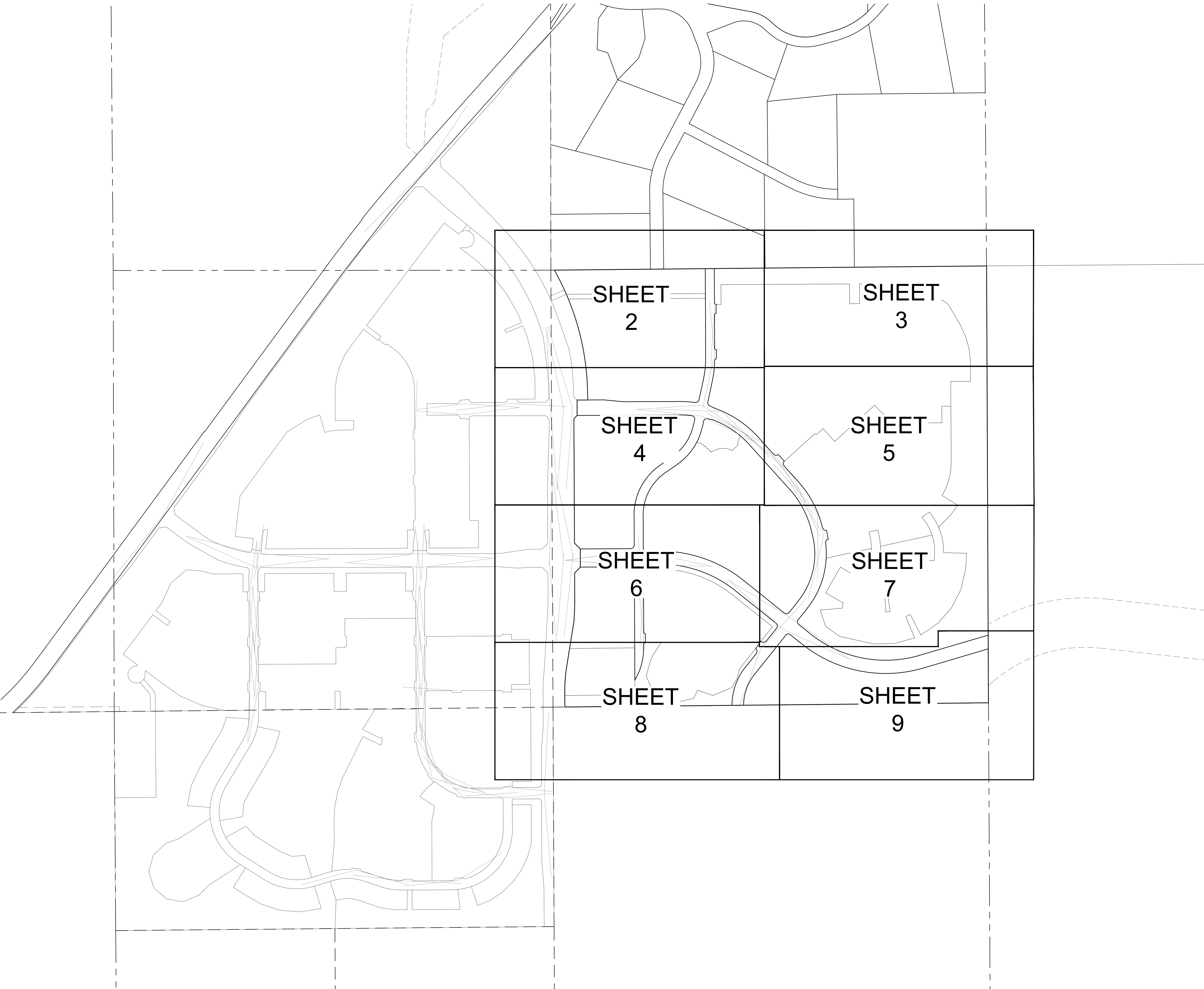


# TRAILS AT CROWFOOT SUBDIVISION FILING NO. 9 ADDRESS PLAT

A PART OF THE SECTIONS 4, 8 AND 9, TOWNSHIP 7 SOUTH, RANGE 66 WEST OF THE 6th PRINCIPAL MERIDIAN,  
TOWN OF PARKER, COUNTY OF DOUGLAS, STATE OF COLORADO  
SHEET 1 OF 9

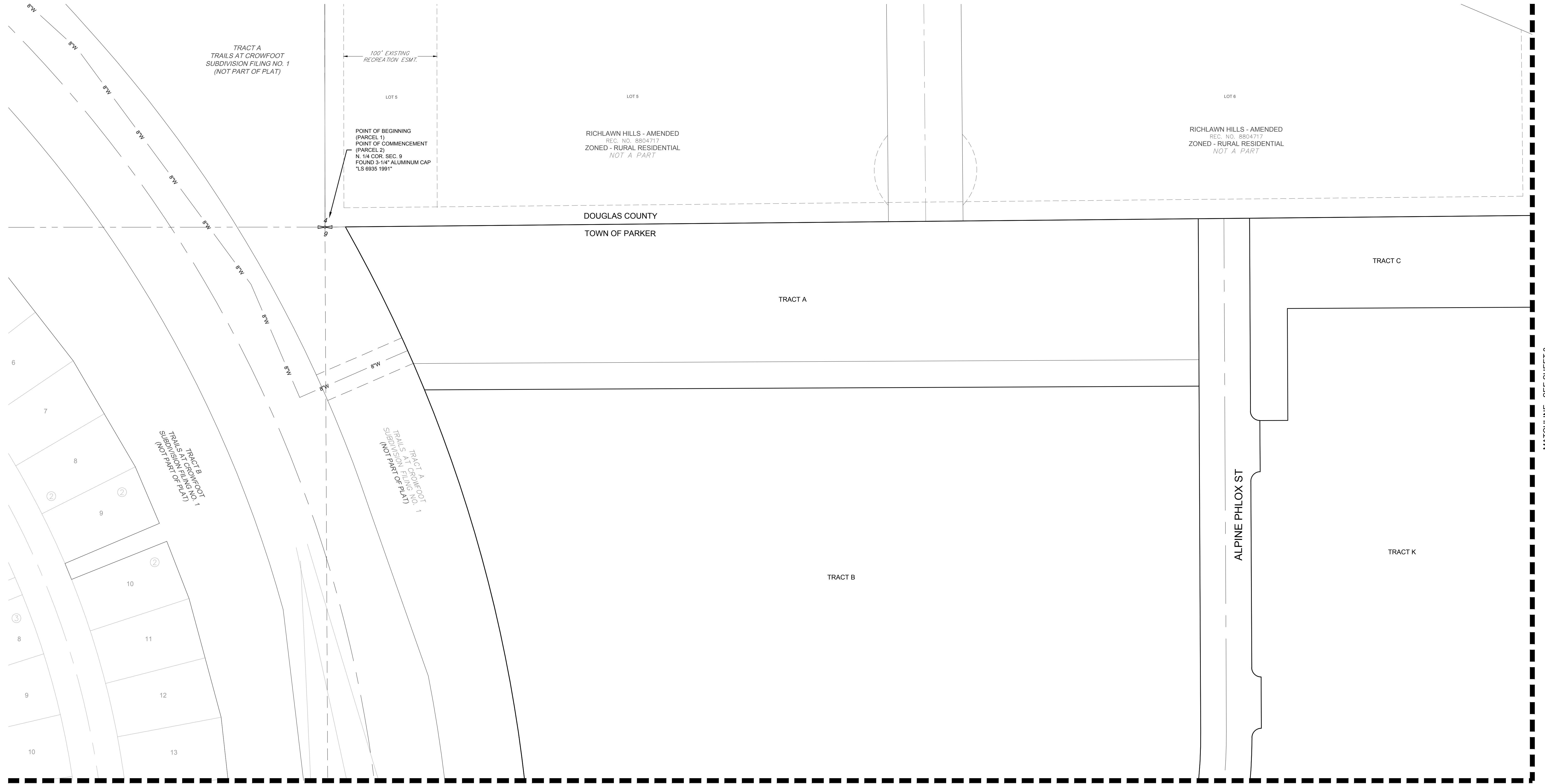


ENGINEER/SURVEYOR

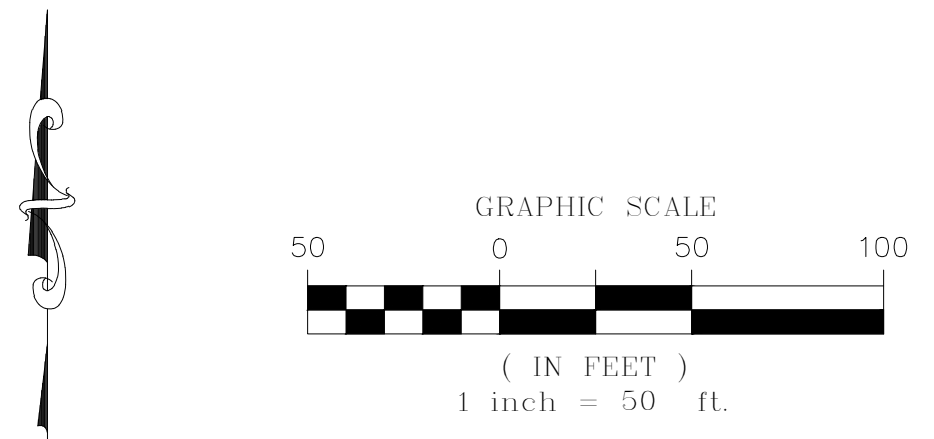
**CVL** Consultants  
of Colorado, Inc.  
10333 E. Dry Creek Rd., Suite 240  
Englewood, CO 80112  
Tel: (720) 482-9526 / Fax: (720) 482-9546

# TRAILS AT CROWFOOT SUBDIVISION FILING NO. 9 ADDRESS PLAT

A PART OF THE SECTIONS 4, 8 AND 9, TOWNSHIP 7 SOUTH, RANGE 66 WEST OF THE 6th PRINCIPAL MERIDIAN,  
TOWN OF PARKER, COUNTY OF DOUGLAS, STATE OF COLORADO  
SHEET 2 OF 9



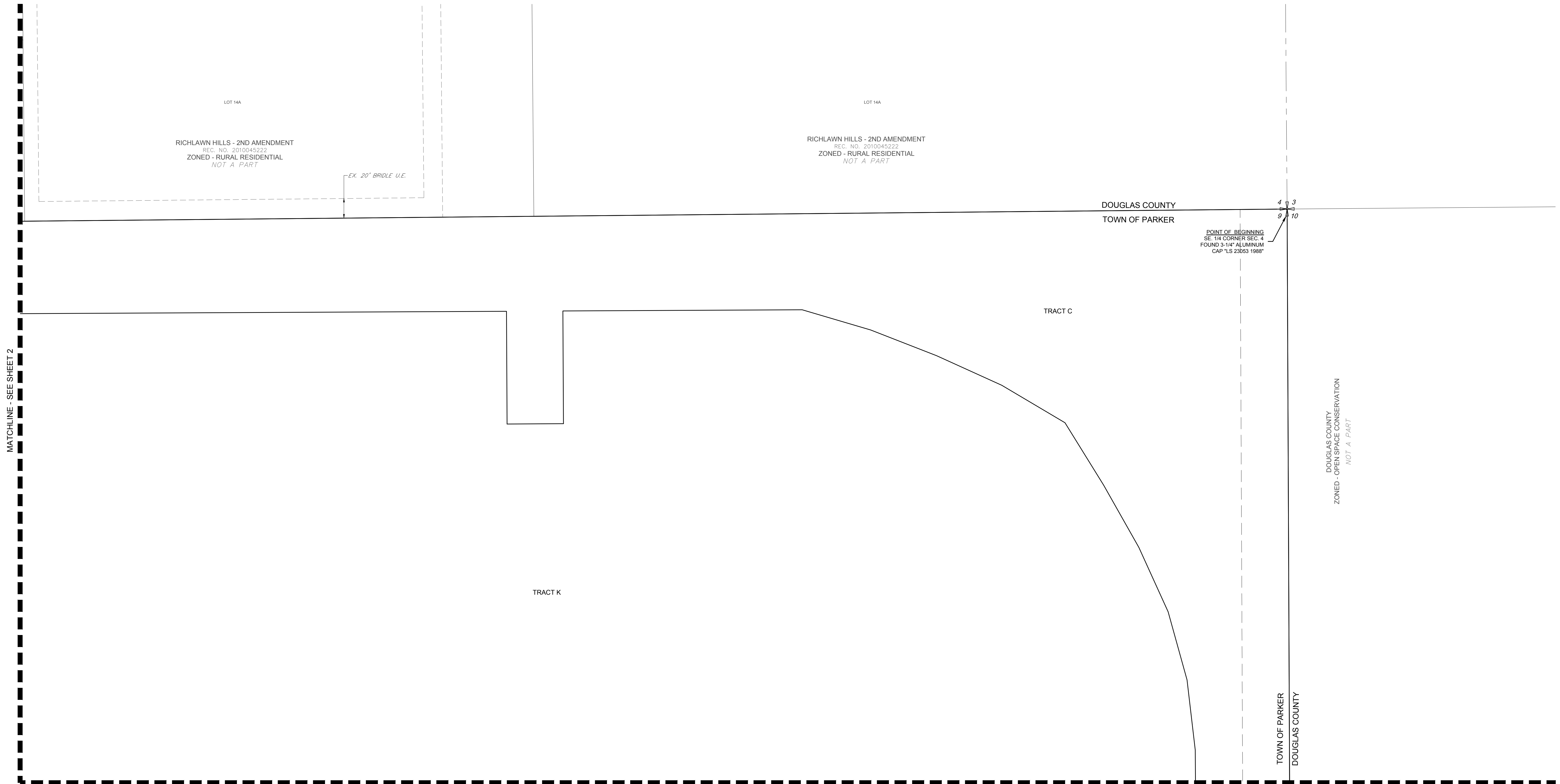
LEGEND	
	FND. SECTION CORNER AS DESCRIBED
	R.O.W. RIGHT-OF-WAY
	S.W.U.E. SIDEWALK & UTILITY EASEMENT
	U.E. UTILITY EASEMENT
	D.U.E. DRAINAGE AND UTILITY EASEMENT
	A.E. ACCESS EASEMENT
	G.E. GAS EASEMENT
	EX U.E. EXISTING UTILITY EASEMENT



ENGINEER/SURVEYOR  
**CVL** Consultants  
 of Colorado, Inc.  
 10333 E. Dry Creek Rd., Suite 240  
 Englewood, CO 80112  
 Tel: (720) 482-9526 / Fax: (720) 482-9546

# TRAILS AT CROWFOOT SUBDIVISION FILING NO. 9 ADDRESS PLAT

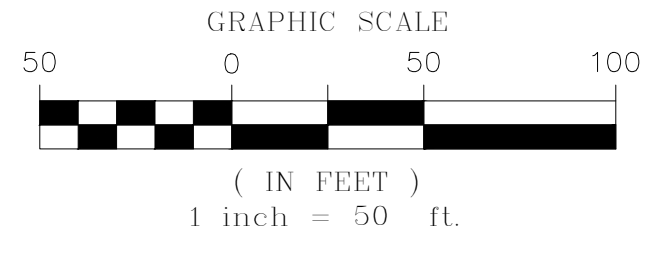
A PART OF THE SECTIONS 4, 8 AND 9, TOWNSHIP 7 SOUTH, RANGE 66 WEST OF THE 6th PRINCIPAL MERIDIAN,  
TOWN OF PARKER, COUNTY OF DOUGLAS, STATE OF COLORADO  
SHEET 3 OF 9



MATCHLINE - SEE SHEET 2

MATCHLINE - SEE SHEET 5

LEGEND	
	FND. SECTION CORNER AS DESCRIBED
	R.O.W. RIGHT-OF-WAY
	S.W.U.E. SIDEWALK & UTILITY EASEMENT
	U.E. UTILITY EASEMENT
	D.U.E. DRAINAGE AND UTILITY EASEMENT
	A.E. ACCESS EASEMENT
	G.E. GAS EASEMENT
	EX U.E. EXISTING UTILITY EASEMENT



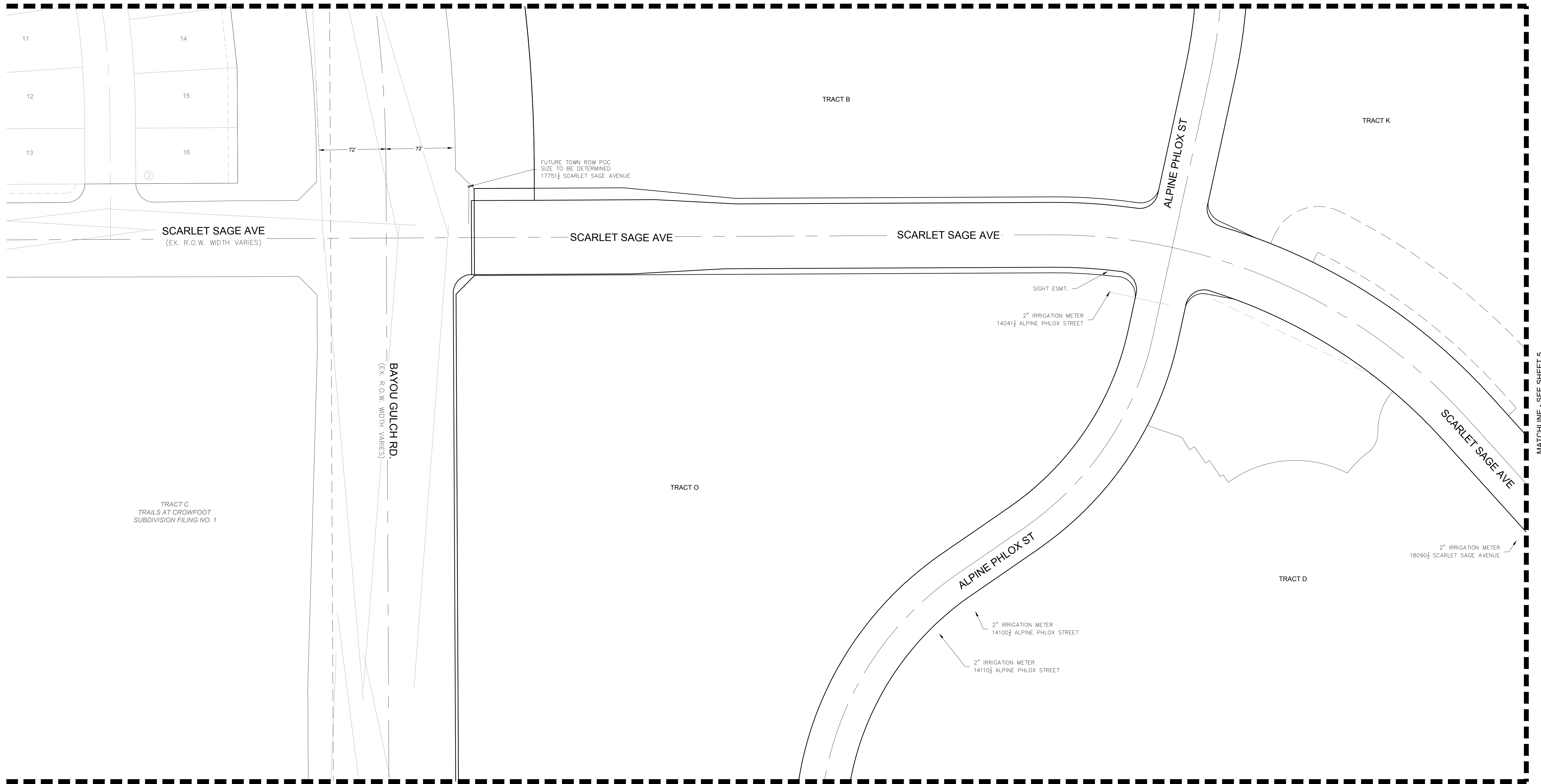
ENGINEER/SURVEYOR  
**CVL** Consultants  
of Colorado, Inc.  
10333 E. Dry Creek Rd., Suite 240  
Englewood, CO 80112  
Tel: (720) 482-9526 / Fax: (720) 482-9546

# TRAILS AT CROWFOOT SUBDIVISION FILING NO. 9 ADDRESS PLAT

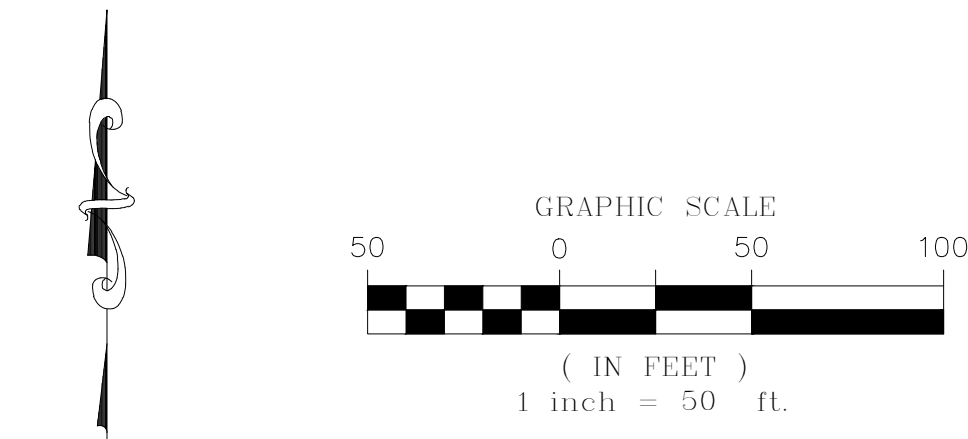
A PART OF THE SECTIONS 4, 8 AND 9, TOWNSHIP 7 SOUTH, RANGE 66 WEST OF THE 6th PRINCIPAL MERIDIAN,  
TOWN OF PARKER, COUNTY OF DOUGLAS, STATE OF COLORADO

SHEET 4 OF 9

MATCHLINE - SEE SHEET 2



LEGEND	
	FND. SECTION CORNER AS DESCRIBED
	R.O.W. RIGHT-OF-WAY
	S.W.U.E. SIDEWALK & UTILITY EASEMENT
	U.E. UTILITY EASEMENT
	D.U.E. DRAINAGE AND UTILITY EASEMENT
	A.E. ACCESS EASEMENT
	G.E. GAS EASEMENT
	EX U.E. EXISTING UTILITY EASEMENT

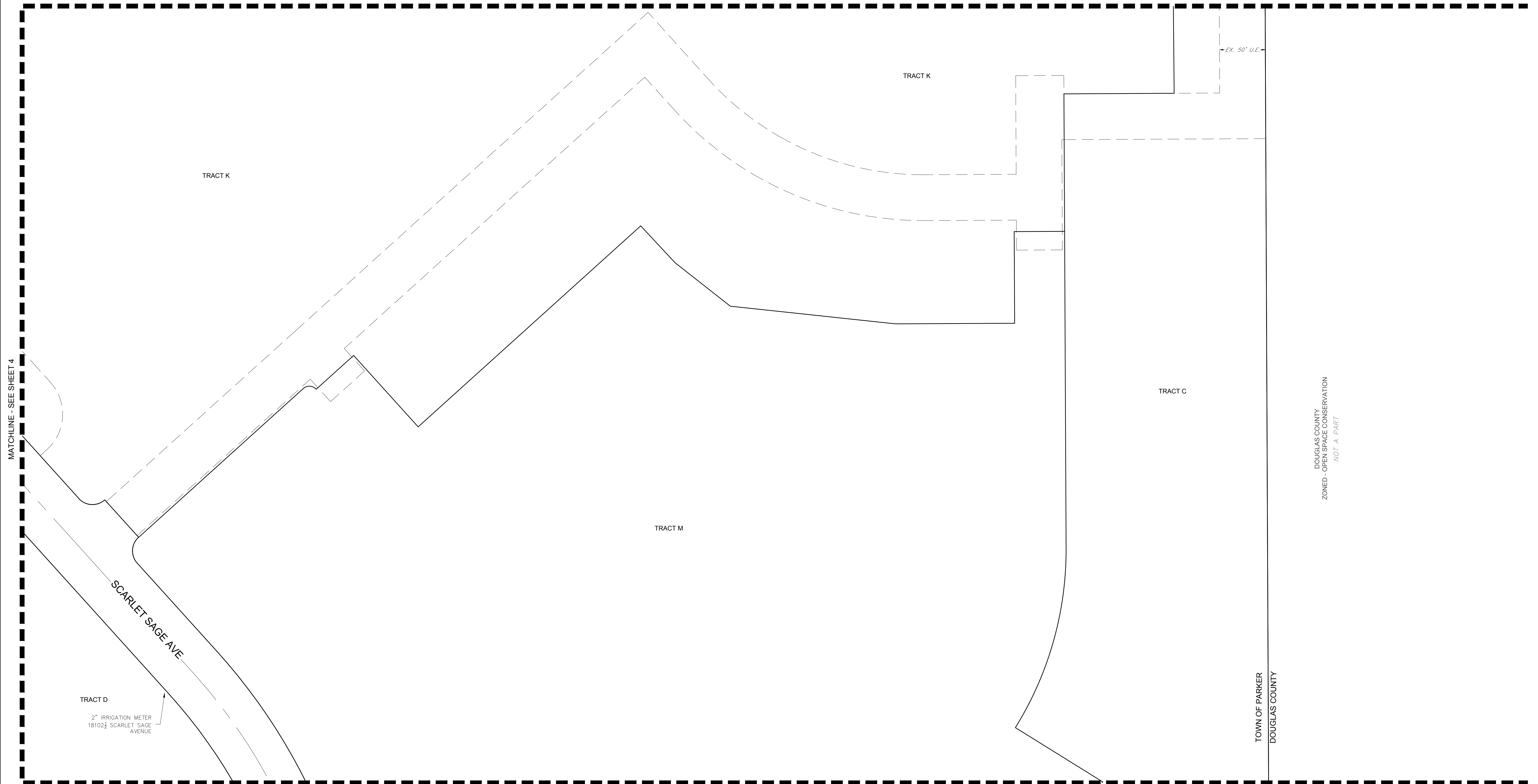


ENGINEER/SURVEYOR  
**CVL** Consultants  
of Colorado, Inc.  
10333 E. Dry Creek Rd., Suite 240  
Englewood, CO 80112  
Tel: (720) 482-9526 / Fax: (720) 482-9546

# TRAILS AT CROWFOOT SUBDIVISION FILING NO. 9 ADDRESS PLAT

A PART OF THE SECTIONS 4, 8 AND 9, TOWNSHIP 7 SOUTH, RANGE 66 WEST OF THE 6th PRINCIPAL MERIDIAN,  
TOWN OF PARKER, COUNTY OF DOUGLAS, STATE OF COLORADO  
SHEET 5 OF 9

MATCHLINE - SEE SHEET 3



MATCHLINE - SEE SHEET 4

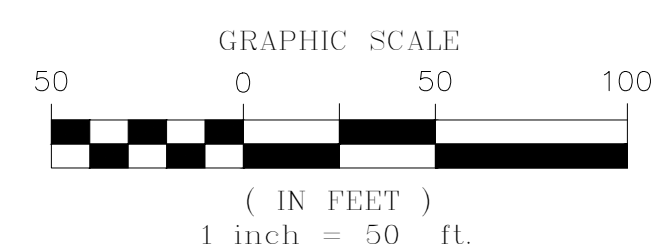
DOUGLAS COUNTY  
ZONED - OPEN SPACE CONSERVATION  
NOT A PART

TOWN OF PARKER  
DOUGLAS COUNTY

MATCHLINE - SEE SHEET 7

## LEGEND

	FND. SECTION CORNER AS DESCRIBED
	R.O.W. RIGHT-OF-WAY
	S.W.U.E. SIDEWALK & UTILITY EASEMENT
	U.E. UTILITY EASEMENT
	D.U.E. DRAINAGE AND UTILITY EASEMENT
	A.E. ACCESS EASEMENT
	G.E. GAS EASEMENT
	EX. U.E. EXISTING UTILITY EASEMENT

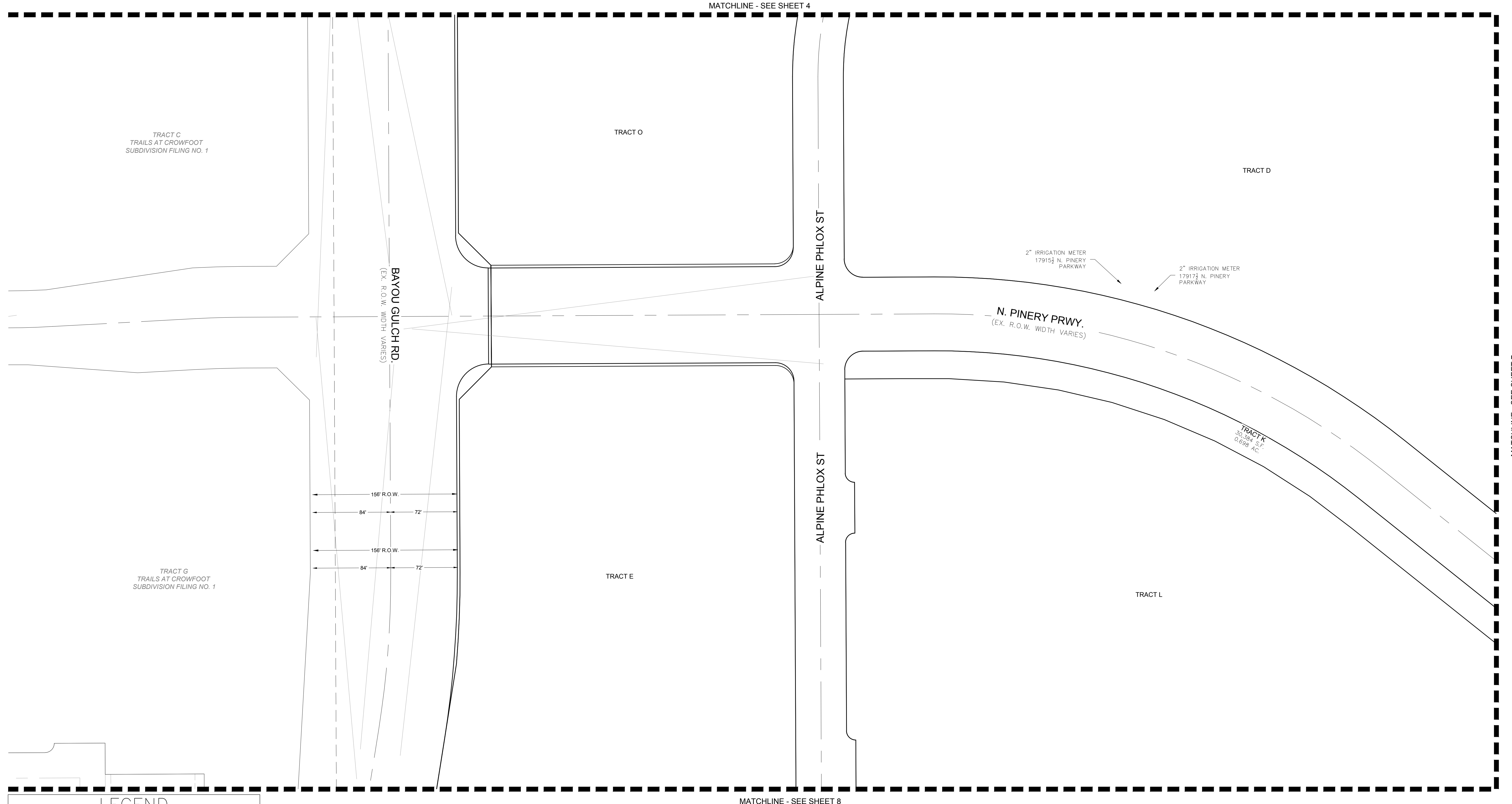


ENGINEER/SURVEYOR

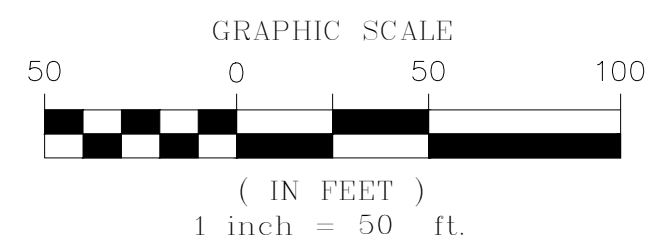
**CVL** Consultants  
of Colorado, Inc.  
10333 E. Dry Creek Rd., Suite 240  
Englewood, CO 80112  
Tel: (720) 482-9526 / Fax: (720) 482-9546

# TRAILS AT CROWFOOT SUBDIVISION FILING NO. 9 ADDRESS PLAT

A PART OF THE SECTIONS 4, 8 AND 9, TOWNSHIP 7 SOUTH, RANGE 66 WEST OF THE 6th PRINCIPAL MERIDIAN,  
TOWN OF PARKER, COUNTY OF DOUGLAS, STATE OF COLORADO  
SHEET 6 OF 9



LEGEND	
	FND. SECTION CORNER AS DESCRIBED
	R.O.W. RIGHT-OF-WAY
	S.W.U.E. SIDEWALK & UTILITY EASEMENT
	U.E. UTILITY EASEMENT
	D.U.E. DRAINAGE AND UTILITY EASEMENT
	A.E. ACCESS EASEMENT
	G.E. GAS EASEMENT
	EX U.E. EXISTING UTILITY EASEMENT



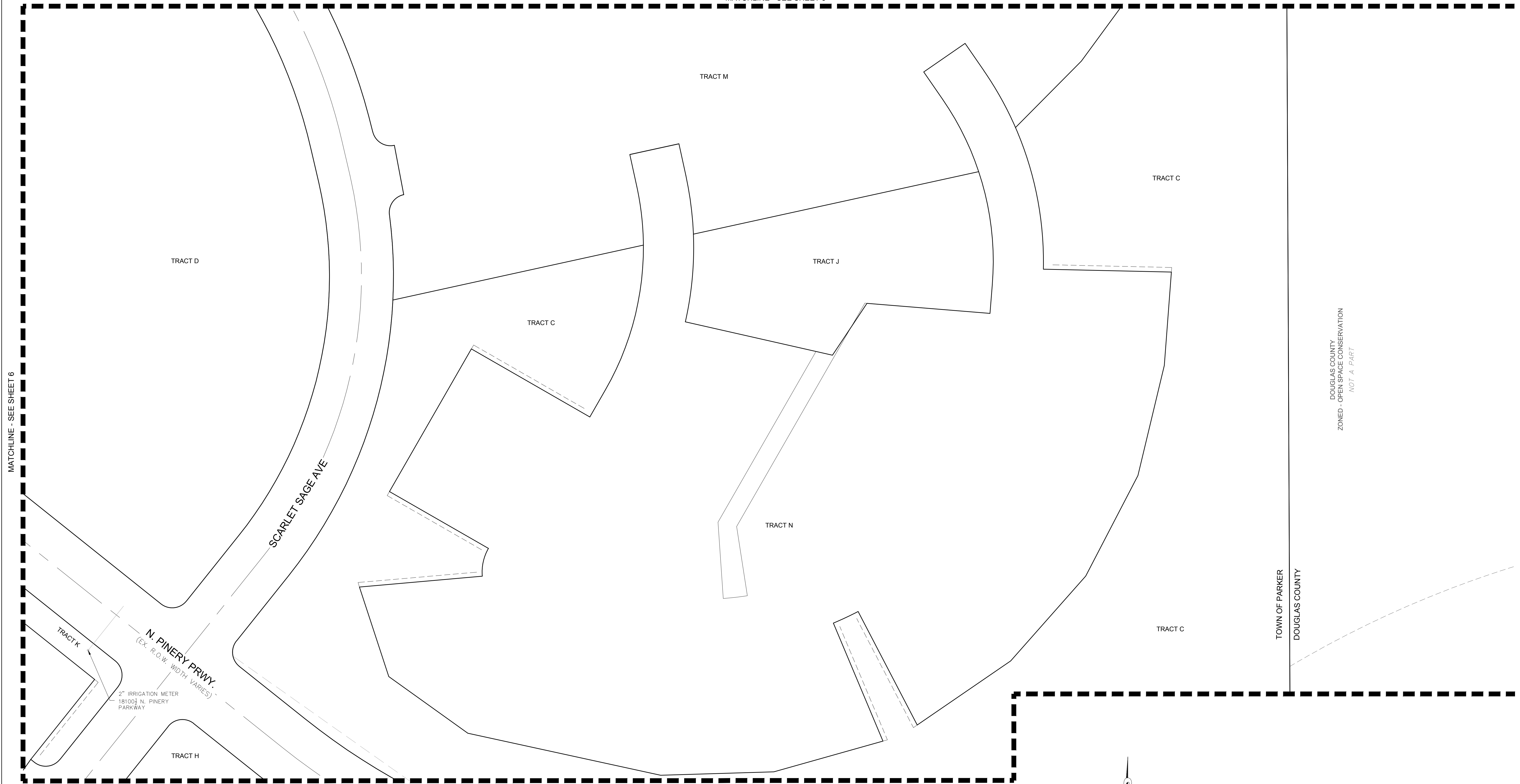
ENGINEER/SURVEYOR  
**CVL** Consultants of Colorado, Inc.  
 10333 E. Dry Creek Rd., Suite 240  
 Englewood, CO 80112  
 Tel: (720) 482-9526 / Fax: (720) 482-9546

# TRAILS AT CROWFOOT SUBDIVISION FILING NO. 9 ADDRESS PLAT

A PART OF THE SECTIONS 4, 8 AND 9, TOWNSHIP 7 SOUTH, RANGE 66 WEST OF THE 6th PRINCIPAL MERIDIAN,  
TOWN OF PARKER, COUNTY OF DOUGLAS, STATE OF COLORADO

SHEET 7 OF 9

MATCHLINE - SEE SHEET 5



MATCHLINE - SEE SHEET 6

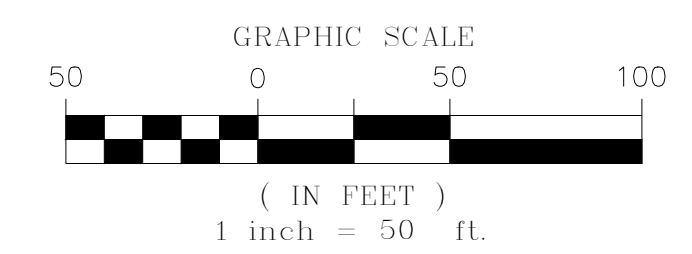
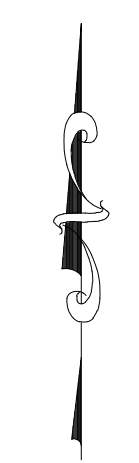
MATCHLINE - SEE SHEET 9

DOUGLAS COUNTY  
ZONED - OPEN SPACE CONSERVATION  
NOT A PART

TOWN OF PARKER  
DOUGLAS COUNTY

## LEGEND

	FND. SECTION CORNER AS DESCRIBED
	R.O.W. RIGHT-OF-WAY
	S.W.U.E. SIDEWALK & UTILITY EASEMENT
	U.E. UTILITY EASEMENT
	D.U.E. DRAINAGE AND UTILITY EASEMENT
	A.E. ACCESS EASEMENT
	G.E. GAS EASEMENT
	EX U.E. EXISTING UTILITY EASEMENT

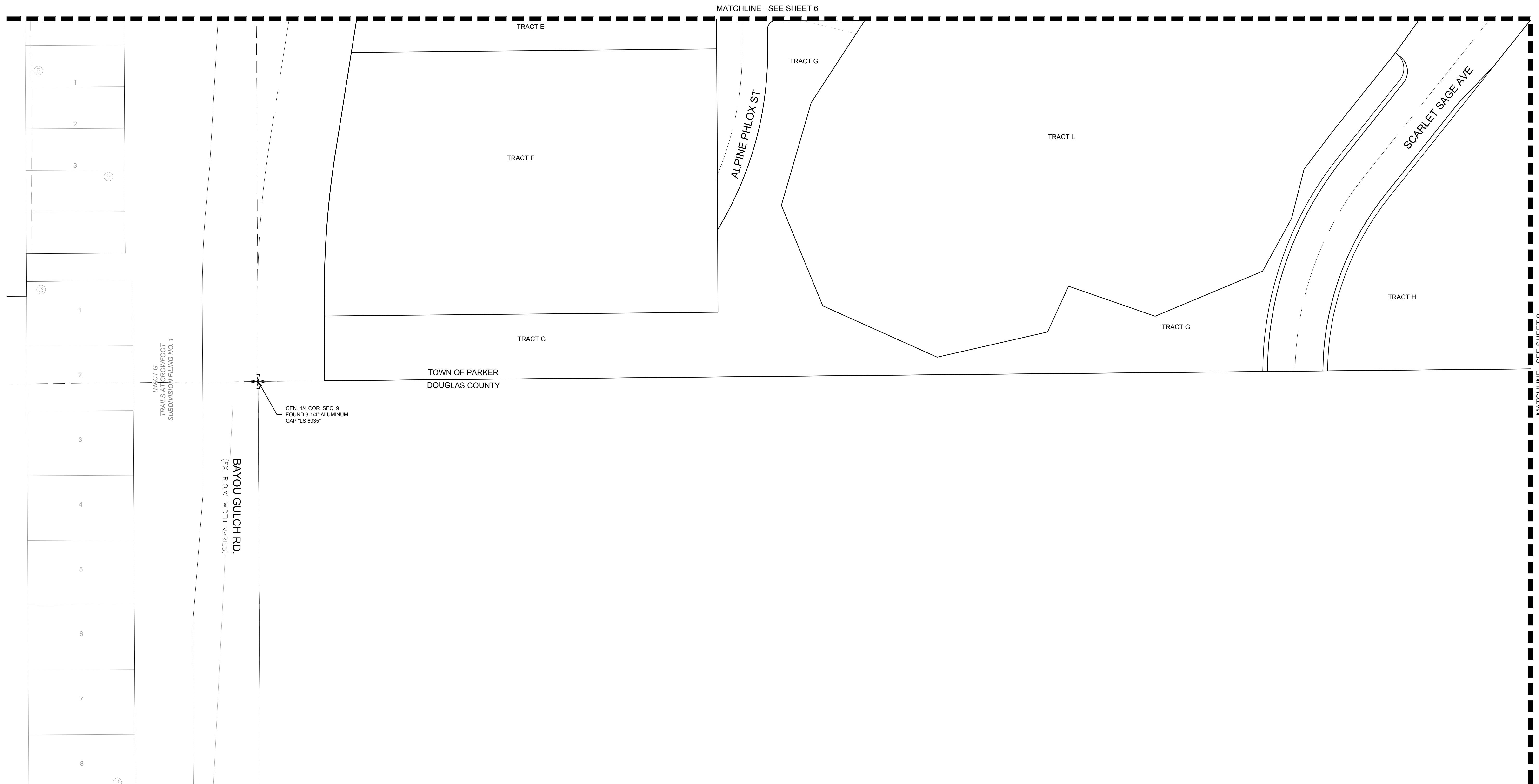


ENGINEER/SURVEYOR

**CVL** Consultants  
of Colorado, Inc.  
10333 E. Dry Creek Rd., Suite 240  
Englewood, CO 80112  
Tel: (720) 482-9526 / Fax: (720) 482-9546

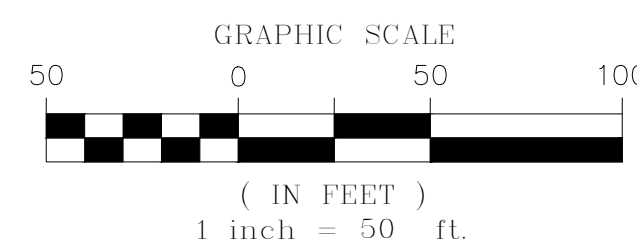
# TRAILS AT CROWFOOT SUBDIVISION FILING NO. 9 ADDRESS PLAT

A PART OF THE SECTIONS 4, 8 AND 9, TOWNSHIP 7 SOUTH, RANGE 66 WEST OF THE 6th PRINCIPAL MERIDIAN,  
TOWN OF PARKER, COUNTY OF DOUGLAS, STATE OF COLORADO  
SHEET 8 OF 9



## LEGEND

	FND. SECTION CORNER AS DESCRIBED
	R.O.W. RIGHT-OF-WAY
	S.W.U.E. SIDEWALK & UTILITY EASEMENT
	U.E. UTILITY EASEMENT
	D.U.E. DRAINAGE AND UTILITY EASEMENT
	A.E. ACCESS EASEMENT
	G.E. GAS EASEMENT
	EX U.E. EXISTING UTILITY EASEMENT

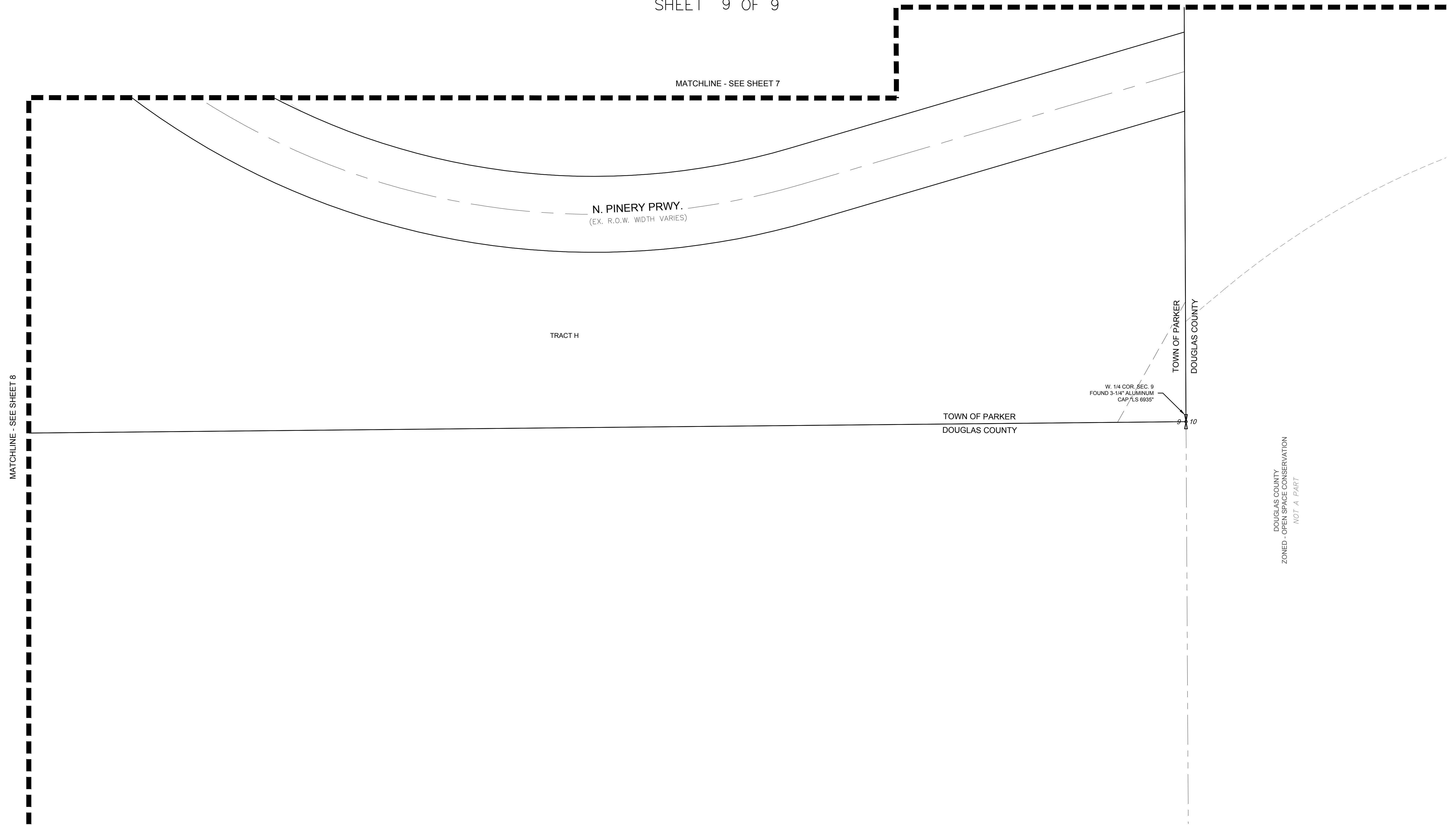


ENGINEER/SURVEYOR

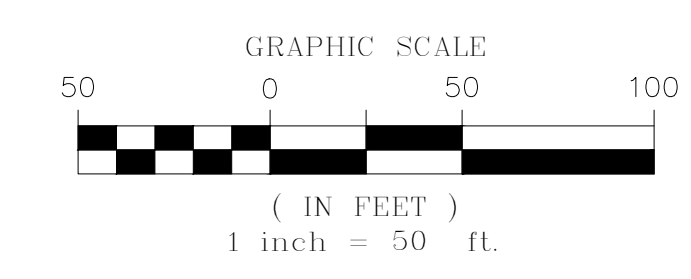
**CVL** Consultants  
of Colorado, Inc.  
10333 E. Dry Creek Rd., Suite 240  
Englewood, CO 80112  
Tel: (720) 482-9526 / Fax: (720) 482-9546

# TRAILS AT CROWFOOT SUBDIVISION FILING NO. 9 ADDRESS PLAT

A PART OF THE SECTIONS 4, 8 AND 9, TOWNSHIP 7 SOUTH, RANGE 66 WEST OF THE 6th PRINCIPAL MERIDIAN,  
TOWN OF PARKER, COUNTY OF DOUGLAS, STATE OF COLORADO  
SHEET 9 OF 9



LEGEND	
	FND. SECTION CORNER AS DESCRIBED
	R.O.W. RIGHT-OF-WAY
	S.W.U.E. SIDEWALK & UTILITY EASEMENT
	U.E. UTILITY EASEMENT
	D.U.E. DRAINAGE AND UTILITY EASEMENT
	A.E. ACCESS EASEMENT
	G.E. GAS EASEMENT
	EX U.E. EXISTING UTILITY EASEMENT



ENGINEER/SURVEYOR  
**CVL** Consultants  
of Colorado, Inc.  
10333 E. Dry Creek Rd., Suite 240  
Englewood, CO 80112  
Tel: (720) 482-9526 / Fax: (720) 482-9546