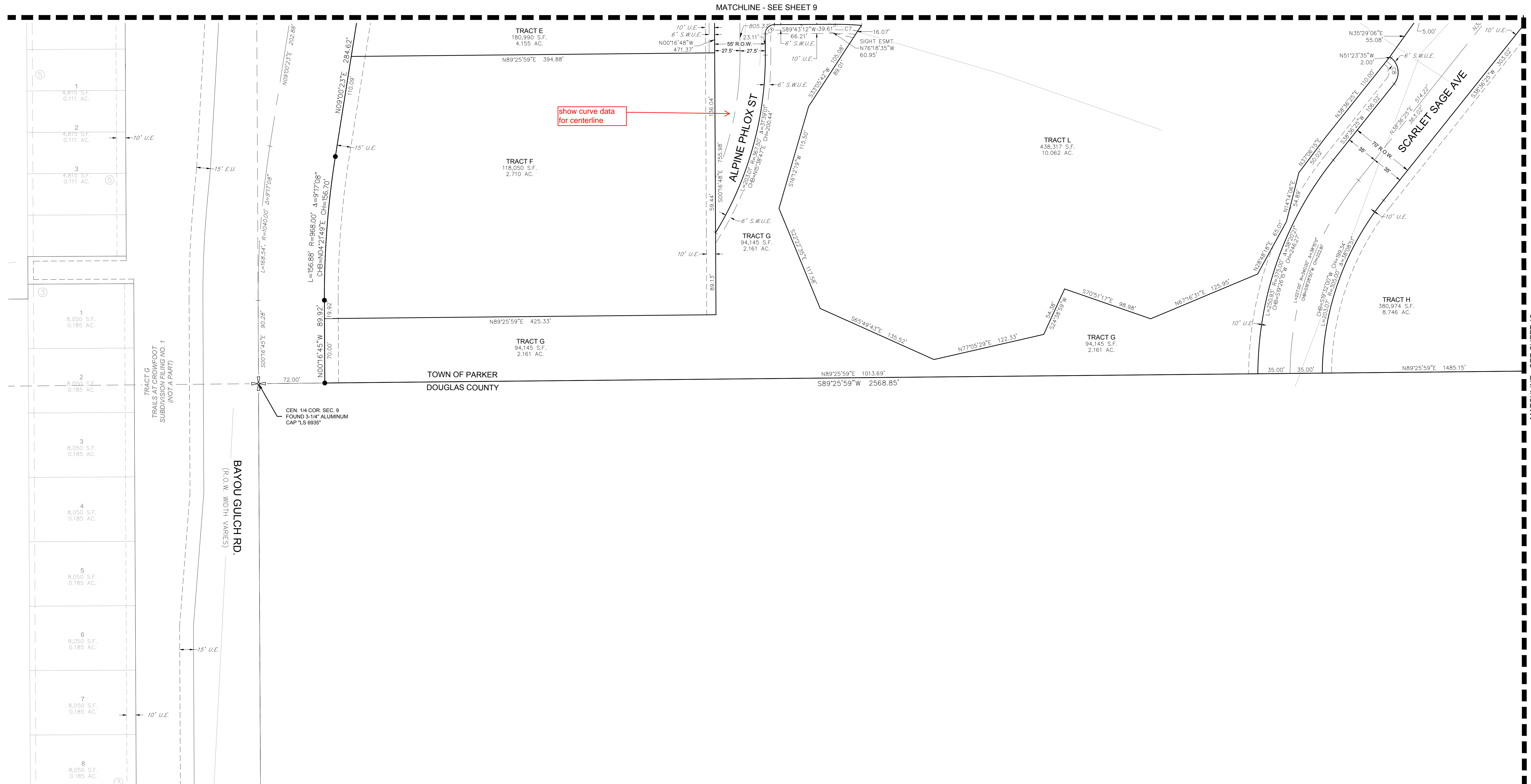


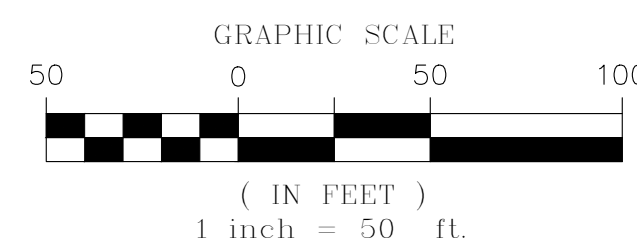
# TRAILS AT CROWFOOT SUBDIVISION FILING NO. 9

A PART OF THE SECTION 9, TOWNSHIP 7 SOUTH, RANGE 66 WEST OF THE 6th PRINCIPAL MERIDIAN,  
TOWN OF PARKER, COUNTY OF DOUGLAS, STATE OF COLORADO  
SHEET 11 OF 12



## LEGEND

	FND. SECTION CORNER AS DESCRIBED
	R.O.W. RIGHT-OF-WAY
	S.W.U.E. SIDEWALK & UTILITY EASEMENT
	U.E. UTILITY EASEMENT
	D.U.E. DRAINAGE AND UTILITY EASEMENT
	EX. U.E. EXISTING UTILITY EASEMENT
	P.W.S.D. U.E. PARKER WATER & SANITATION DISTRICT UTILITY EASEMENT
	SET NO. 6 REBAR, 30" LONG, w/2" ALUMINUM CAP STAMPED CVL LS NO. 25369 UNLESS OTHERWISE NOTED



CURVE TABLE					
CURVE NO.	LENGTH	RADIUS	DELTA	CHORD DIRECTION	CHORD LENGTH
C6	15.71'	10.00'	90°00'00"	S44°43'12"W	14.14'
C7	28.42'	312.50'	5°12'39"	N87°40'29"W	28.41'
C8	31.42'	20.00'	90°00'00"	N6°23'35"W	28.28'

ENGINEER/SURVEYOR

**CVL** Consultants  
of Colorado, Inc.  
10333 E. Dry Creek Rd., Suite 240  
Englewood, CO 80112  
Tel: (720) 482-9526 / Fax: (720) 482-9546