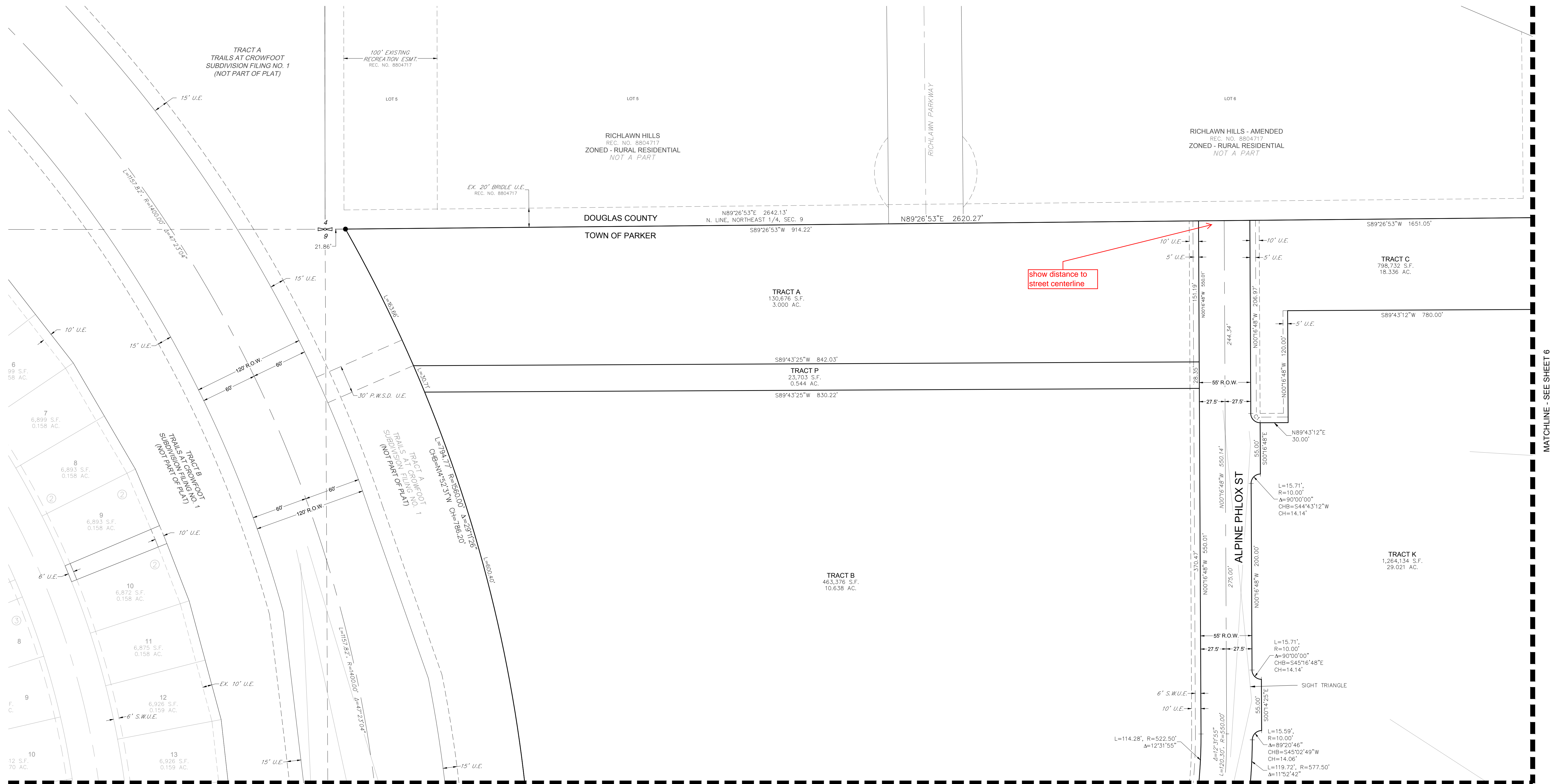
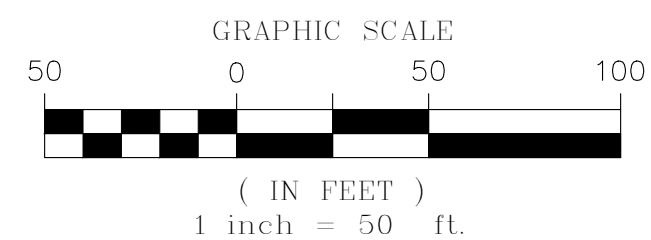


TRAILS AT CROWFOOT SUBDIVISION FILING NO. 9

A PART OF THE SECTION 9, TOWNSHIP 7 SOUTH, RANGE 66 WEST OF THE 6th PRINCIPAL MERIDIAN,
TOWN OF PARKER, COUNTY OF DOUGLAS, STATE OF COLORADO
SHEET 5 OF 12



LEGEND	
	FND. SECTION CORNER AS DESCRIBED
	R.O.W. RIGHT-OF-WAY
	S.W.U.E. SIDEWALK & UTILITY EASEMENT
	U.E. UTILITY EASEMENT
	D.U.E. DRAINAGE AND UTILITY EASEMENT
	EX U.E. EXISTING UTILITY EASEMENT
	P.W.S.D. U.E. PARKER WATER & SANITATION DISTRICT UTILITY EASEMENT
	SET NO. 6 REBAR, 30" LONG, w/2" ALUMINUM CAP STAMPED CVL LS NO. 25369 UNLESS OTHERWISE NOTED



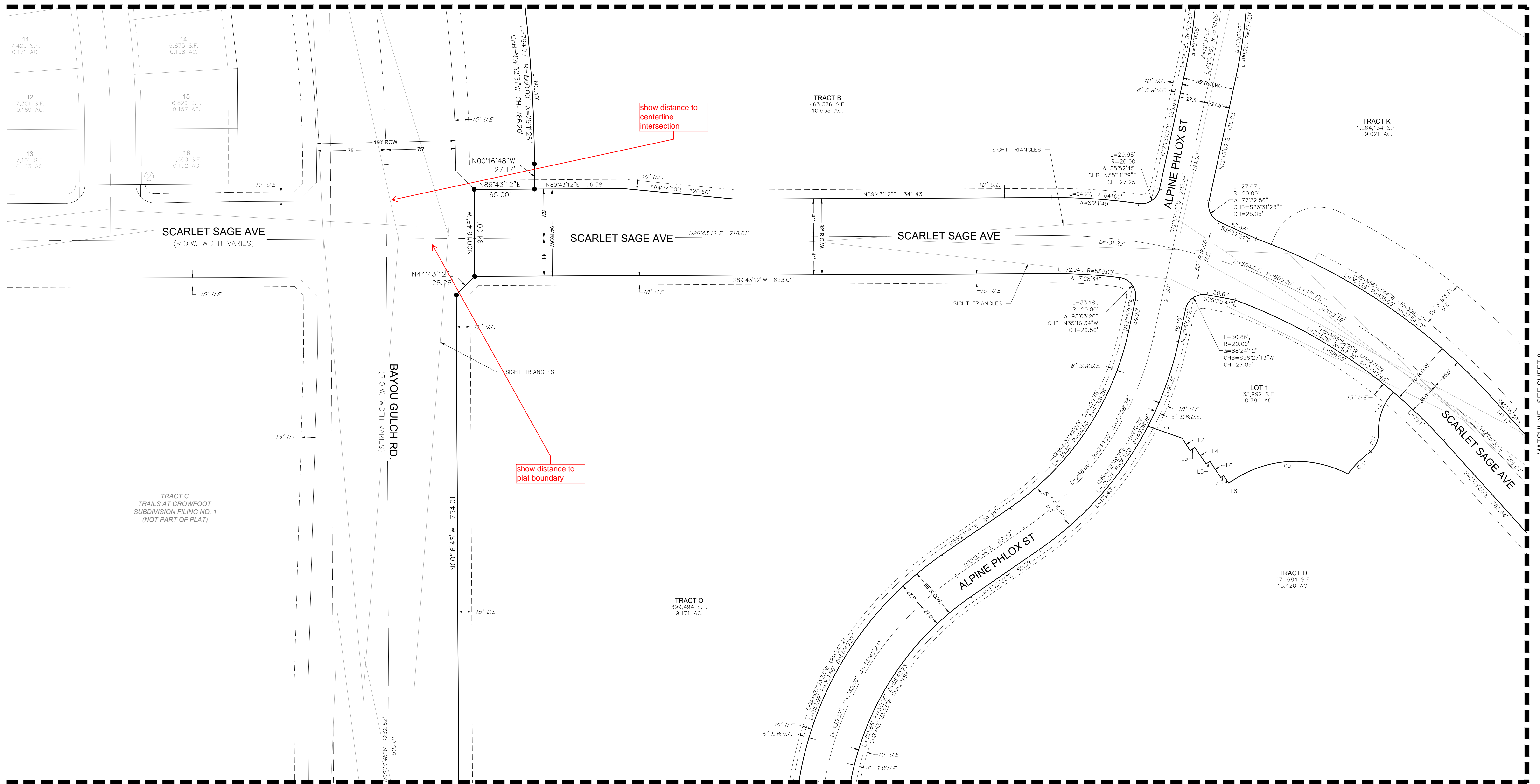
CURVE TABLE					
CURVE NO.	LENGTH	RADIUS	DELTA	CHORD DIRECTION	CHORD LENGTH
C1	15.71'	10.00'	90°00'00"	S45°16'48"E	14.14'

ENGINEER/SURVEYOR
CVL Consultants of Colorado, Inc.
10333 E. Dry Creek Rd., Suite 240
Englewood, CO 80112
Tel: (720) 482-9526 / Fax: (720) 482-9546

TRAILS AT CROWFOOT SUBDIVISION FILING NO. 9

A PART OF THE SECTION 9, TOWNSHIP 7 SOUTH, RANGE 66 WEST OF THE 6th PRINCIPAL MERIDIAN,
TOWN OF PARKER, COUNTY OF DOUGLAS, STATE OF COLORADO
SHEET 7 OF 12

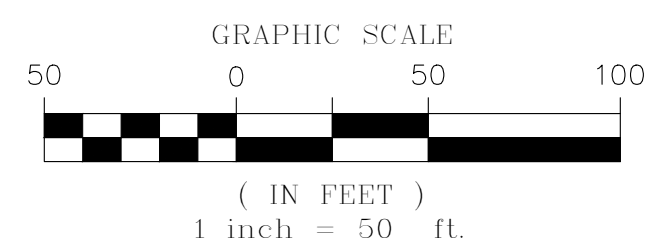
MATCHLINE - SEE SHEET 5



MATCHLINE - SEE SHEET 9

LEGEND

	FND. SECTION CORNER AS DESCRIBED
R.O.W.	RIGHT-OF-WAY
S.W.U.E.	SIDEWALK & UTILITY EASEMENT
U.E.	UTILITY EASEMENT
D.U.E.	DRAINAGE AND UTILITY EASEMENT
EX U.E.	EXISTING UTILITY EASEMENT
P.W.S.D. U.E.	PARKER WATER & SANITATION DISTRICT UTILITY EASEMENT
●	SET NO. 6 REBAR, 30" LONG, w/2" ALUMINUM CAP STAMPED CVL LS NO. 25369 UNLESS OTHERWISE NOTED

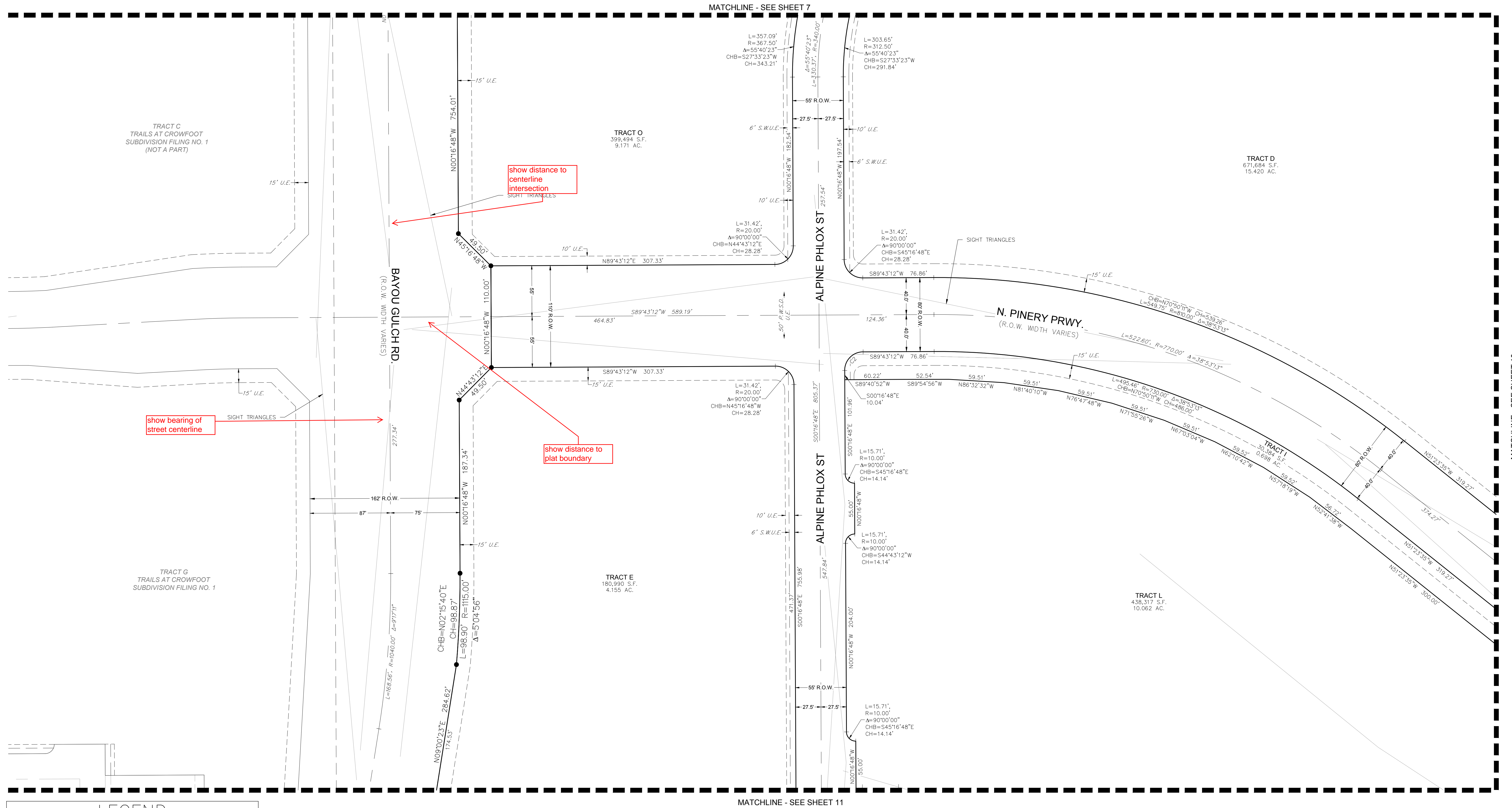


CURVE NO.	LENGTH	RADIUS	DELTA	CHORD DIRECTION	CHORD LENGTH
C9	135.69'	122.26'	63°35'36"	N85°34'05"E	128.84'
C10	34.52'	107.76'	18°21'10"	N45°34'17"E	34.37'
C11	24.74'	27.80'	50°58'32"	N20°37'57"E	23.93'
C12	45.90'	62.63'	41°59'38"	N20°59'49"E	44.88'

LINE NO.	LENGTH	DIRECTION
L1	39.17'	S70°44'22"E
L2	15.93'	S32°16'16"E
L3	6.12'	N55°25'36"E
L4	21.57'	S34°34'24"E
L5	5.00'	N55°25'36"E
L6	20.99'	S33°39'56"E
L7	3.67'	N58°23'08"E
L8	9.85'	S34°36'25"E

TRAILS AT CROWFOOT SUBDIVISION FILING NO. 9

A PART OF THE SECTION 9, TOWNSHIP 7 SOUTH, RANGE 66 WEST OF THE 6th PRINCIPAL MERIDIAN,
TOWN OF PARKER, COUNTY OF DOUGLAS, STATE OF COLORADO
SHEET 9 OF 12

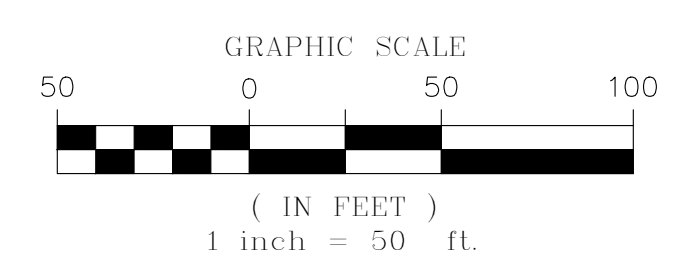


show bearing of street centerline

show distance to centerline intersection

show distance to plat boundary

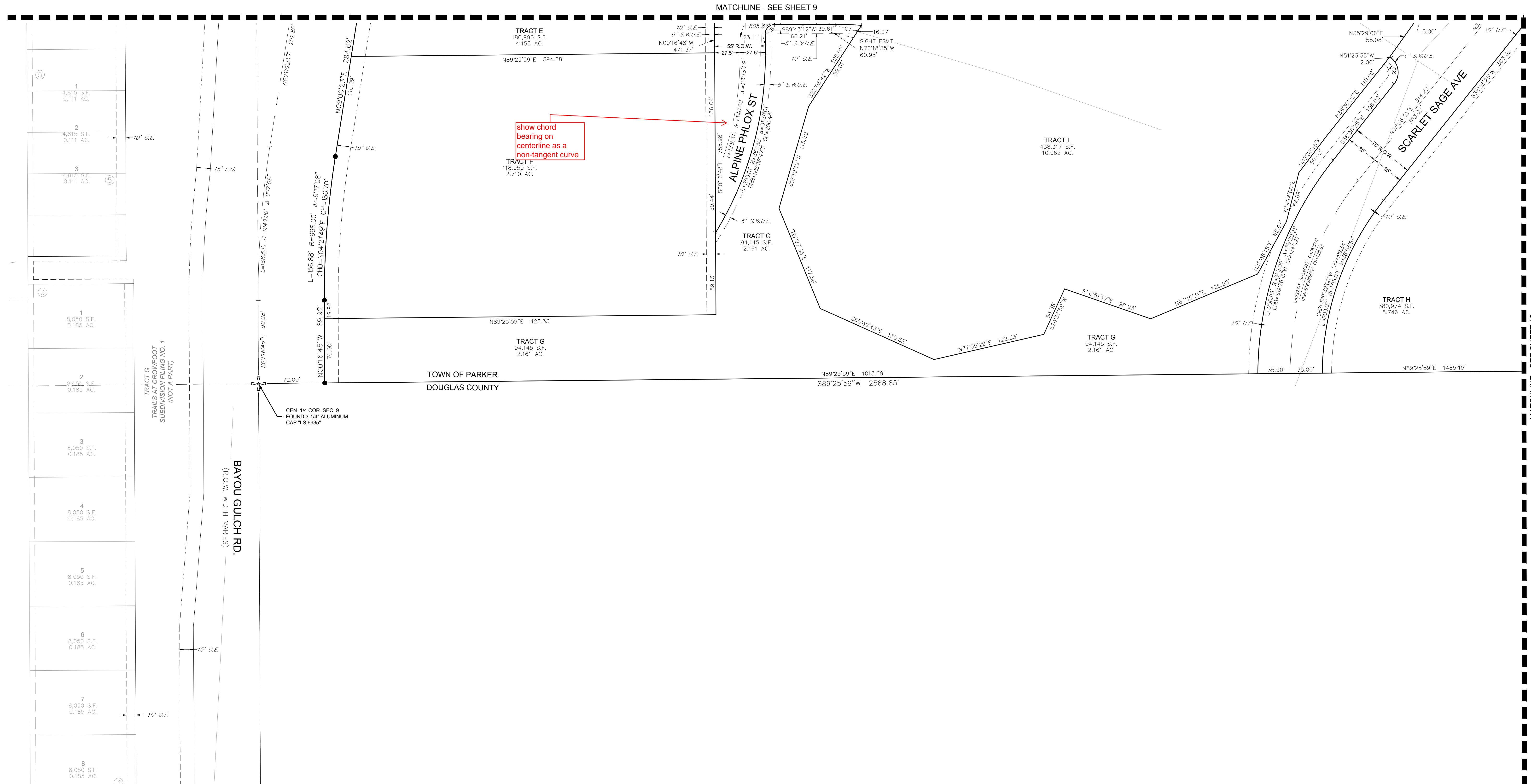
LEGEND	
	FND. SECTION CORNER AS DESCRIBED
	R.O.W. RIGHT-OF-WAY
	S.W.U.E. SIDEWALK & UTILITY EASEMENT
	U.E. UTILITY EASEMENT
	D.U.E. DRAINAGE AND UTILITY EASEMENT
	EX U.E. EXISTING UTILITY EASEMENT
	P.W.S.D. U.E. PARKER WATER & SANITATION DISTRICT UTILITY EASEMENT
	SET NO. 6 REBAR, 30" LONG, w/2" ALUMINUM CAP STAMPED CVL LS. NO. 25369 UNLESS OTHERWISE NOTED



CURVE TABLE					
CURVE NO.	LENGTH	RADIUS	DELTA	CHORD DIRECTION	CHORD LENGTH
C2	31.42'	20.00'	90°00'00"	S44°43'12"W	28.28'

TRAILS AT CROWFOOT SUBDIVISION FILING NO. 9

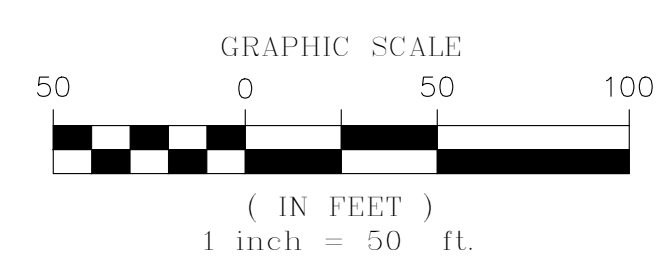
A PART OF THE SECTION 9, TOWNSHIP 7 SOUTH, RANGE 66 WEST OF THE 6th PRINCIPAL MERIDIAN,
TOWN OF PARKER, COUNTY OF DOUGLAS, STATE OF COLORADO
SHEET 11 OF 12



show chord bearing on centerline as a non-tangent curve

LEGEND

	FND. SECTION CORNER AS DESCRIBED
	R.O.W. RIGHT-OF-WAY
	S.W.U.E. SIDEWALK & UTILITY EASEMENT
	U.E. UTILITY EASEMENT
	D.U.E. DRAINAGE AND UTILITY EASEMENT
	EX. U.E. EXISTING UTILITY EASEMENT
	P.W.S.D. PARKER WATER & SANITATION DISTRICT UTILITY EASEMENT
	SET NO. 6 REBAR, 30" LONG, w/2" ALUMINUM CAP STAMPED CVL LS NO. 25369 UNLESS OTHERWISE NOTED



CURVE TABLE					
CURVE NO.	LENGTH	RADIUS	DELTA	CHORD DIRECTION	CHORD LENGTH
C6	15.71'	10.00'	90°00'00"	S44°43'12"W	14.14'
C7	28.42'	312.50'	5°12'39"	N87°40'29"W	28.41'
C8	31.42'	20.00'	90°00'00"	N6°23'35"W	28.28'

ENGINEER/SURVEYOR
CVL Consultants
of Colorado, Inc.
10333 E. Dry Creek Rd., Suite 240
Englewood, CO 80112
Tel: (720) 482-9526 / Fax: (720) 482-9546