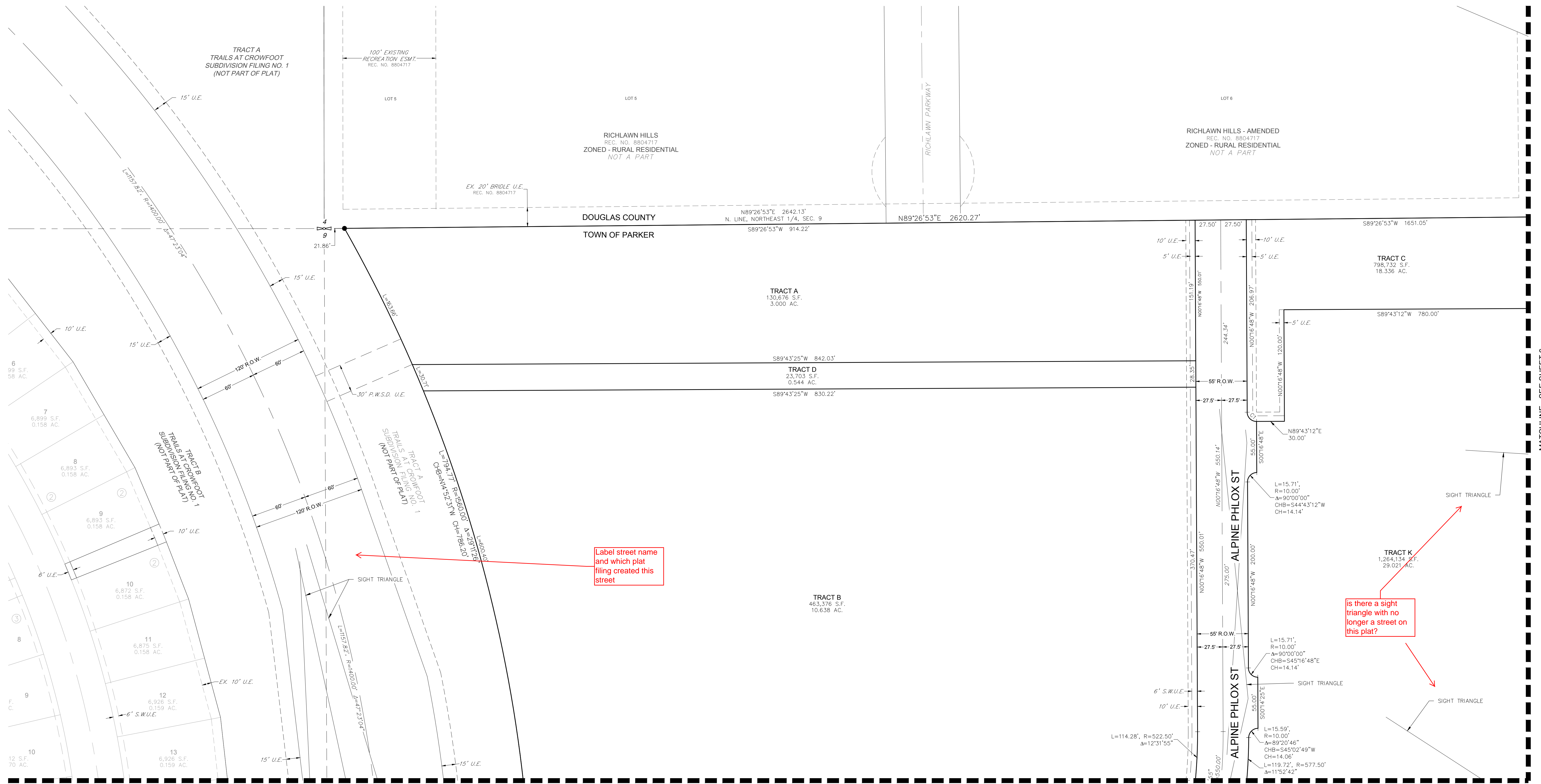


TRAILS AT CROWFOOT FILING NO. 9

A PART OF THE SECTION 9, TOWNSHIP 7 SOUTH, RANGE 66 WEST OF THE 6th PRINCIPAL MERIDIAN,
TOWN OF PARKER, COUNTY OF DOUGLAS, STATE OF COLORADO
SHEET 5 OF 12

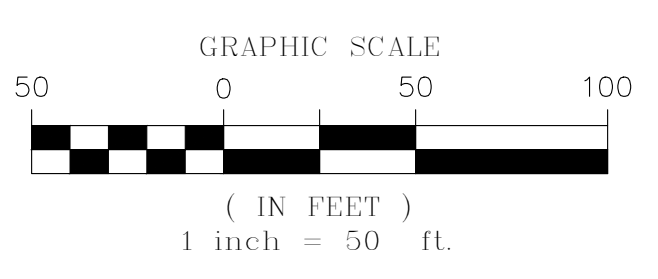


Label street name and which plat filing created this street

is there a sight triangle with no longer a street on this plat?

LEGEND

	FND. SECTION CORNER AS DESCRIBED
	R.O.W. RIGHT-OF-WAY
	S.W.U.E. SIDEWALK & UTILITY EASEMENT
	U.E. UTILITY EASEMENT
	D.U.E. DRAINAGE AND UTILITY EASEMENT
	EX U.E. EXISTING UTILITY EASEMENT
	P.W.S.D. U.E. PARKER WATER & SANITATION DISTRICT UTILITY EASEMENT
	SET NO. 6 REBAR, 30" LONG, w/2" ALUMINUM CAP STAMPED CVL LS NO. 25369 UNLESS OTHERWISE NOTED

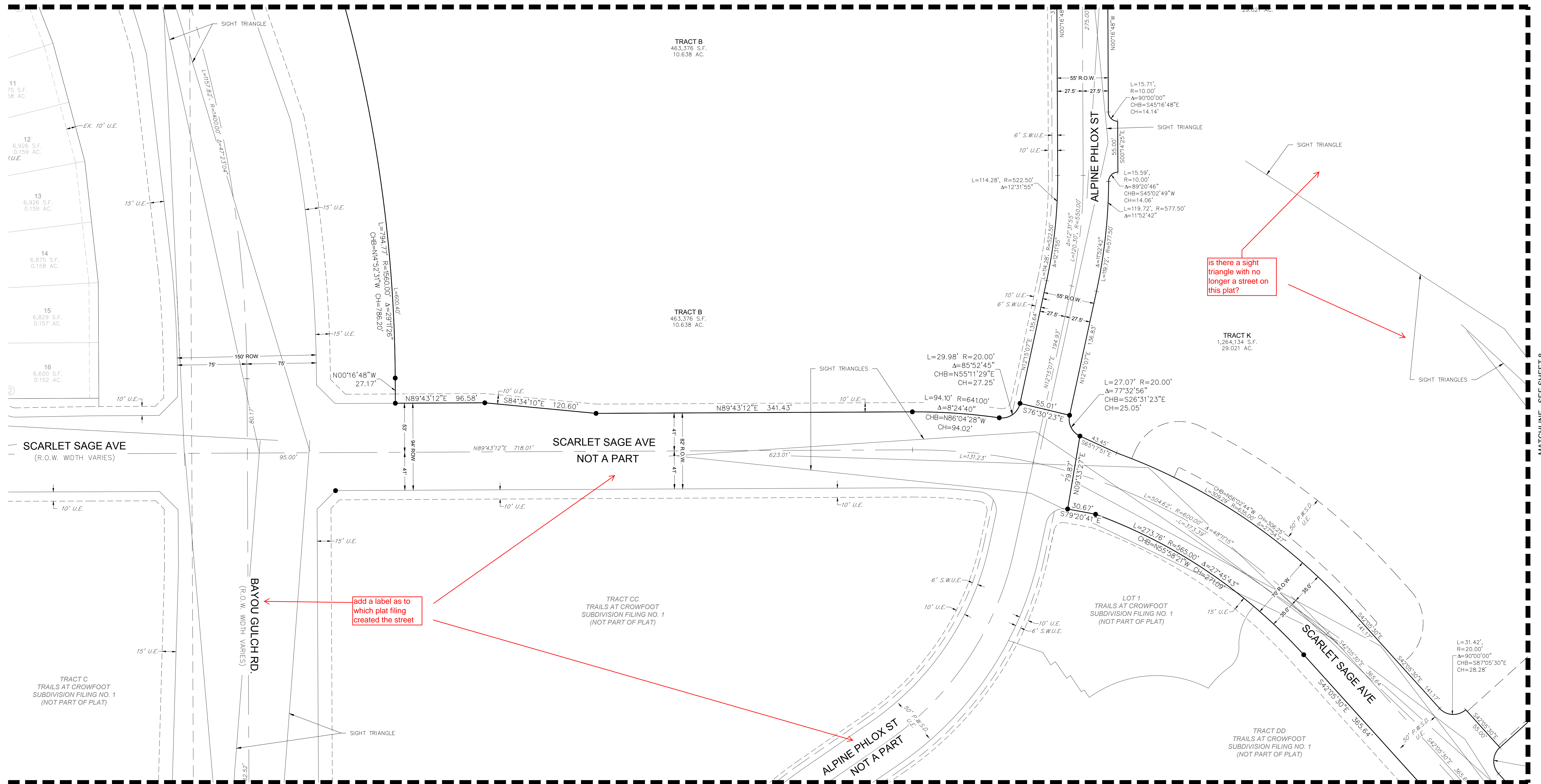


CURVE TABLE					
CURVE NO.	LENGTH	RADIUS	DELTA	CHORD DIRECTION	CHORD LENGTH
C1	15.71'	10.00'	90°00'00"	S45°16'48"E	14.14'

TRAILS AT CROWFOOT FILING NO. 9

A PART OF THE SECTION 9, TOWNSHIP 7 SOUTH, RANGE 66 WEST OF THE 6th PRINCIPAL MERIDIAN,
TOWN OF PARKER, COUNTY OF DOUGLAS, STATE OF COLORADO
SHEET 7 OF 12

MATCHLINE - SEE SHEET 5

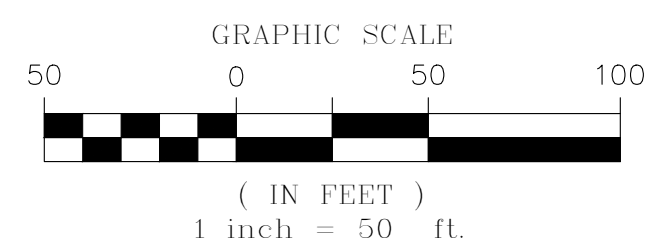


MATCHLINE - SEE SHEET 8

MATCHLINE - SEE SHEET 9

LEGEND

	FND. SECTION CORNER AS DESCRIBED
	R.O.W. RIGHT-OF-WAY
	S.W.U.E. SIDEWALK & UTILITY EASEMENT
	U.E. UTILITY EASEMENT
	D.U.E. DRAINAGE AND UTILITY EASEMENT
	EX U.E. EXISTING UTILITY EASEMENT
	P.W.S.D. U.E. PARKER WATER & SANITATION DISTRICT UTILITY EASEMENT
	SET NO. 6 REBAR, 30" LONG, w/2" ALUMINUM CAP STAMPED CVL LS NO. 25369 UNLESS OTHERWISE NOTED



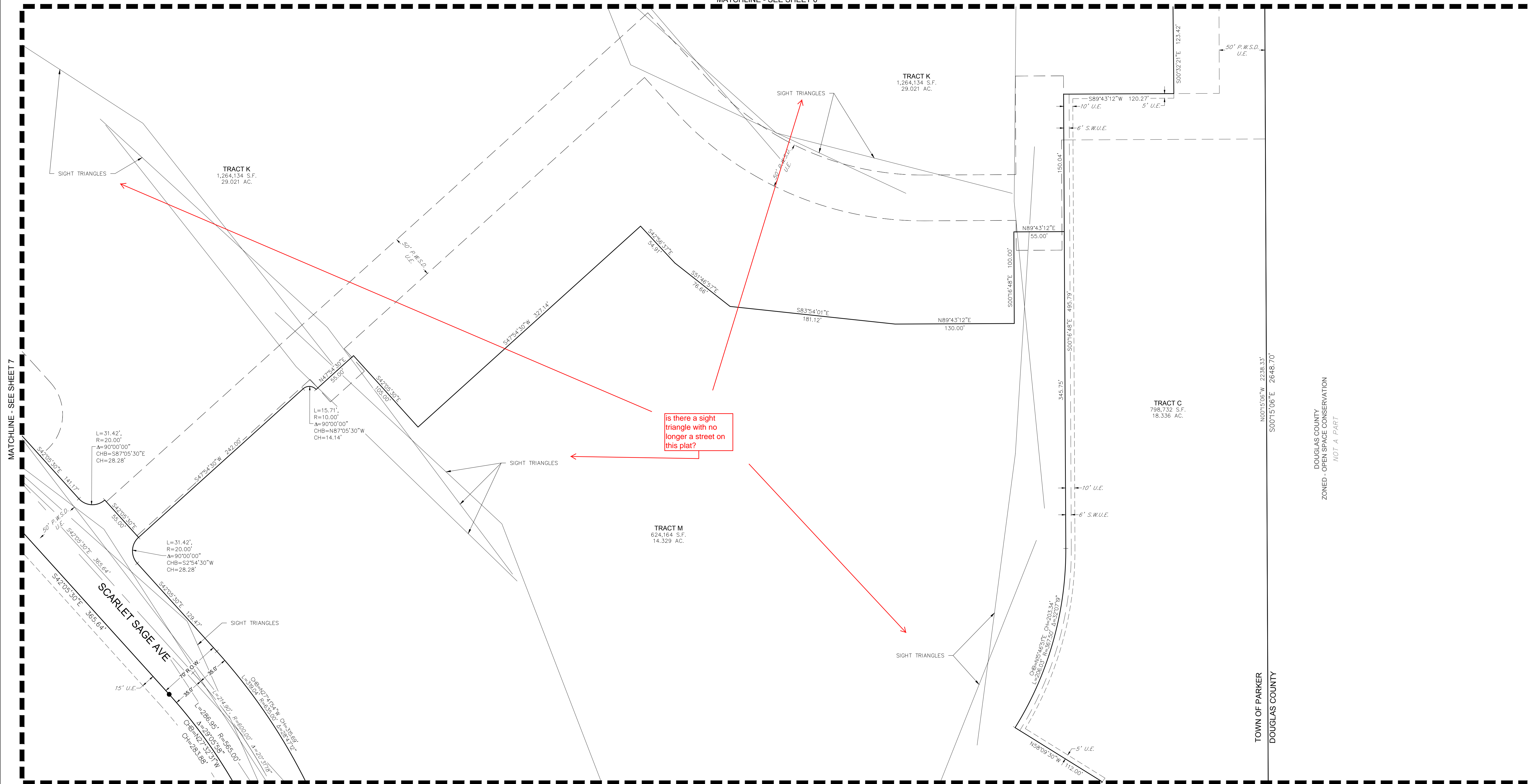
ENGINEER/SURVEYOR

CVL Consultants
of Colorado, Inc.
10333 E. Dry Creek Rd., Suite 240
Englewood, CO 80112
Tel: (720) 482-9526 / Fax: (720) 482-9546

TRAILS AT CROWFOOT FILING NO. 9

A PART OF THE SECTION 9, TOWNSHIP 7 SOUTH, RANGE 66 WEST OF THE 6th PRINCIPAL MERIDIAN,
TOWN OF PARKER, COUNTY OF DOUGLAS, STATE OF COLORADO
SHEET 8 OF 12

MATCHLINE - SEE SHEET 6

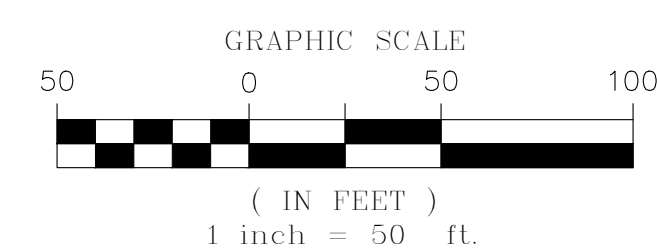


MATCHLINE - SEE SHEET 7

MATCHLINE - SEE SHEET 10

LEGEND

	FND. SECTION CORNER AS DESCRIBED
	R.O.W. RIGHT-OF-WAY
	S.W.U.E. SIDEWALK & UTILITY EASEMENT
	U.E. UTILITY EASEMENT
	D.U.E. DRAINAGE AND UTILITY EASEMENT
	EX U.E. EXISTING UTILITY EASEMENT
	P.W.S.D. U.E. PARKER WATER & SANITATION DISTRICT UTILITY EASEMENT
	SET NO. 6 REBAR, 30" LONG, w/2" ALUMINUM CAP STAMPED CVL LS. NO. 25369 UNLESS OTHERWISE NOTED



DOUGLAS COUNTY
ZONED - OPEN SPACE CONSERVATION
NOT A PART

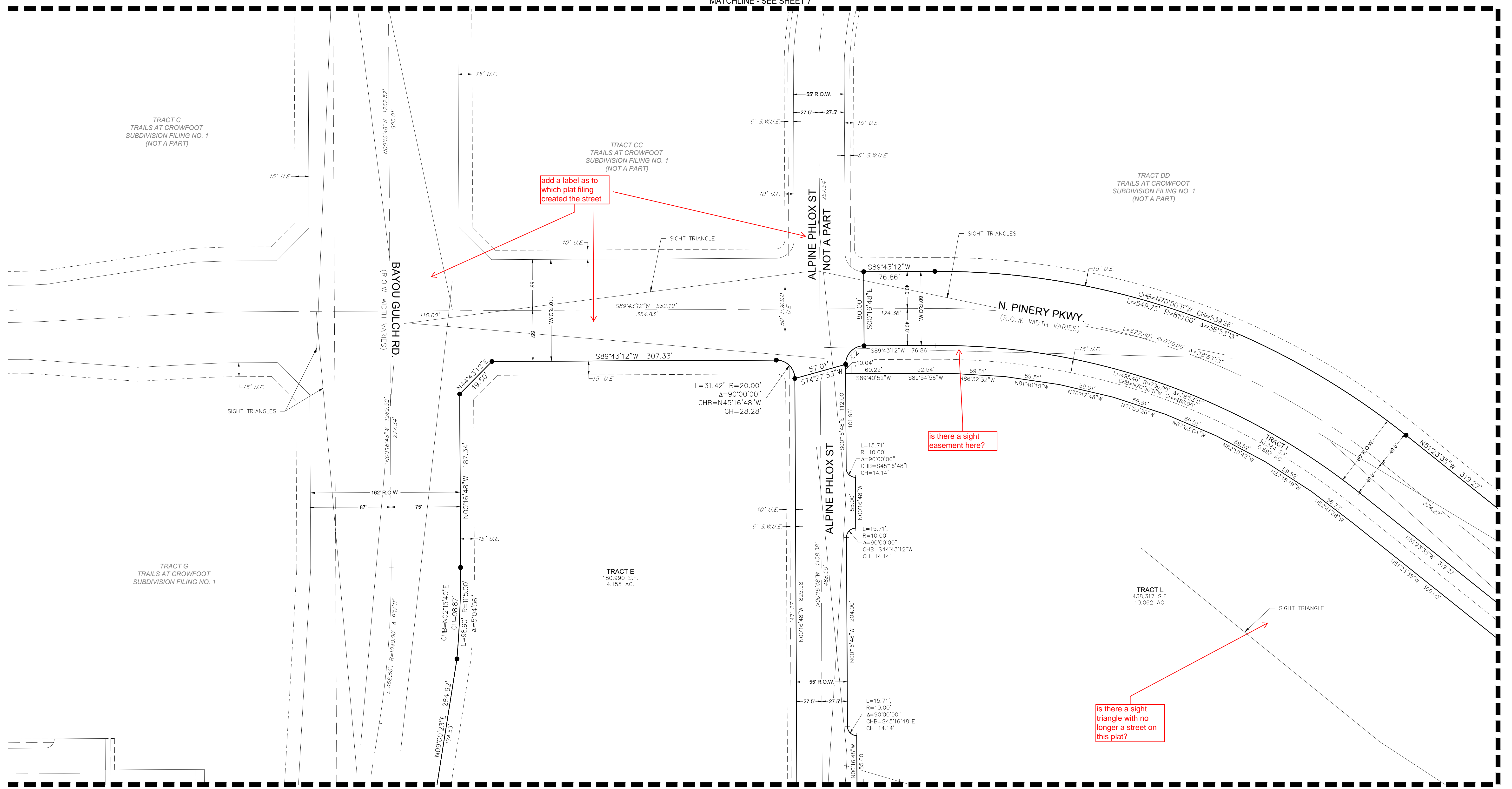
TOWN OF PARKER
DOUGLAS COUNTY

ENGINEER/SURVEYOR

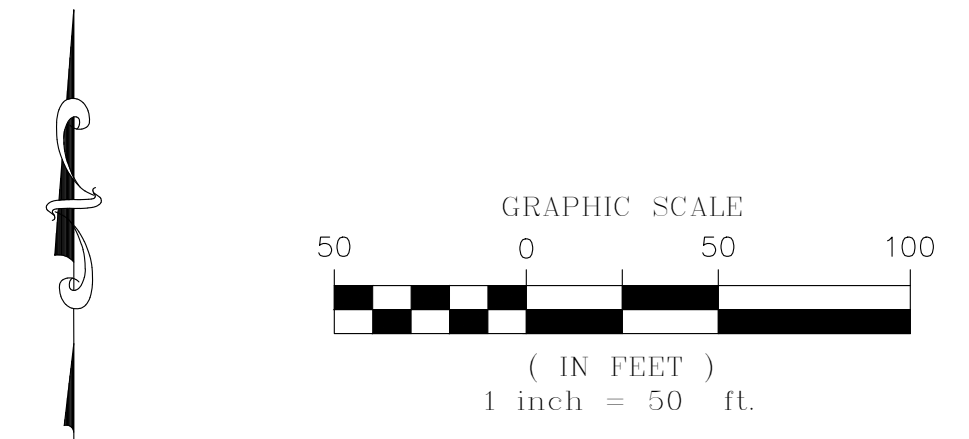
CVL Consultants
of Colorado, Inc.
10333 E. Dry Creek Rd., Suite 240
Englewood, CO 80112
Tel: (720) 482-9526 / Fax: (720) 482-9546

TRAILS AT CROWFOOT FILING NO. 9

A PART OF THE SECTION 9, TOWNSHIP 7 SOUTH, RANGE 66 WEST OF THE 6th PRINCIPAL MERIDIAN,
TOWN OF PARKER, COUNTY OF DOUGLAS, STATE OF COLORADO
SHEET 9 OF 12



LEGEND	
	FND. SECTION CORNER AS DESCRIBED
	R.O.W. RIGHT-OF-WAY
	S.W.U.E. SIDEWALK & UTILITY EASEMENT
	U.E. UTILITY EASEMENT
	D.U.E. DRAINAGE AND UTILITY EASEMENT
	EX U.E. EXISTING UTILITY EASEMENT
	P.W.S.D. U.E. PARKER WATER & SANITATION DISTRICT UTILITY EASEMENT
	SET NO. 6 REBAR, 30" LONG, w/2" ALUMINUM CAP STAMPED CVL LS. NO. 25369 UNLESS OTHERWISE NOTED



CURVE TABLE					
CURVE NO.	LENGTH	RADIUS	DELTA	CHORD DIRECTION	CHORD LENGTH
C2	31.42'	20.00'	90°00'00"	S44°43'12"W	28.28'

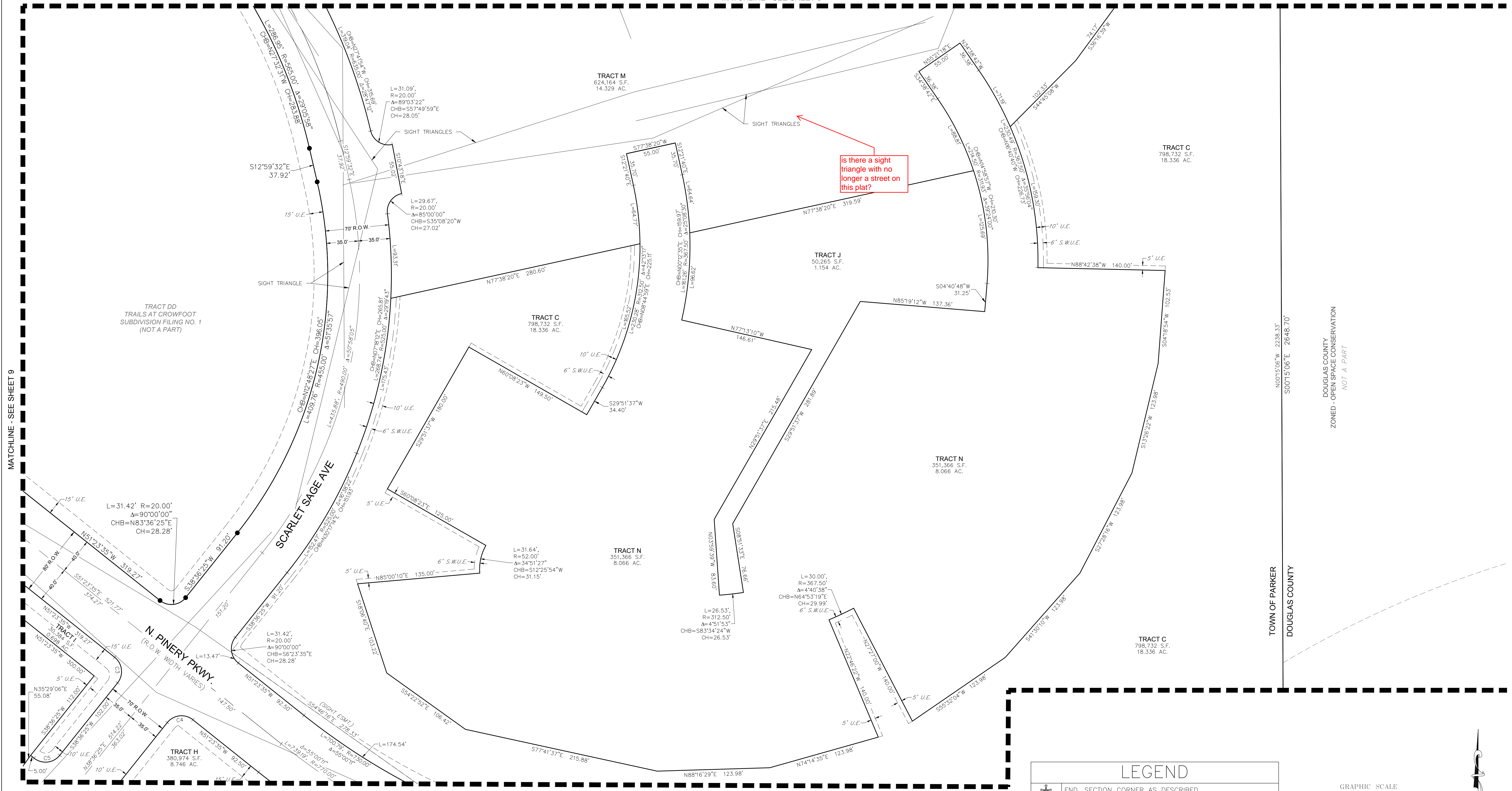
ENGINEER/SURVEYOR
CVL Consultants
of Colorado, Inc.
10333 E. Dry Creek Rd., Suite 240
Englewood, CO 80112
Tel: (720) 482-9526 / Fax: (720) 482-9546

TRAILS AT CROWFOOT FILING NO. 9

A PART OF THE SECTION 9, TOWNSHIP 7 SOUTH, RANGE 66 WEST OF THE 6th PRINCIPAL MERIDIAN,
TOWN OF PARKER, COUNTY OF DOUGLAS, STATE OF COLORADO

SHEET 10 OF 12

MATCHLINE - SEE SHEET 8

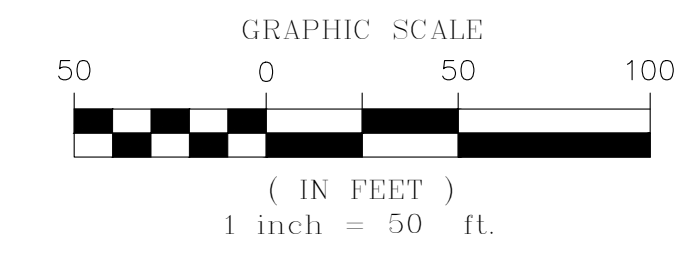


MATCHLINE - SEE SHEET 9

MATCHLINE - SEE SHEET 12

CURVE TABLE					
CURVE NO.	LENGTH	RADIUS	DELTA	CHORD DIRECTION	CHORD LENGTH
C3	31.42'	20.00'	90°00'00"	N6°23'35"W	28.28'
C4	31.42'	20.00'	90°00'00"	S83°36'25"W	28.28'
C5	31.42'	20.00'	90°00'00"	N83°36'25"E	28.28'

LEGEND	
	FND. SECTION CORNER AS DESCRIBED
	R.O.W. RIGHT-OF-WAY
	S.W.U.E. SIDEWALK & UTILITY EASEMENT
	U.E. UTILITY EASEMENT
	D.U.E. DRAINAGE AND UTILITY EASEMENT
	EX U.E. EXISTING UTILITY EASEMENT
	P.W.S.D. U.E. PARKER WATER & SANITATION DISTRICT UTILITY EASEMENT
	SET NO. 6 REBAR, 30" LONG, w/2" ALUMINUM CAP
	STAMPED CVL LS NO. 25369 UNLESS OTHERWISE NOTED



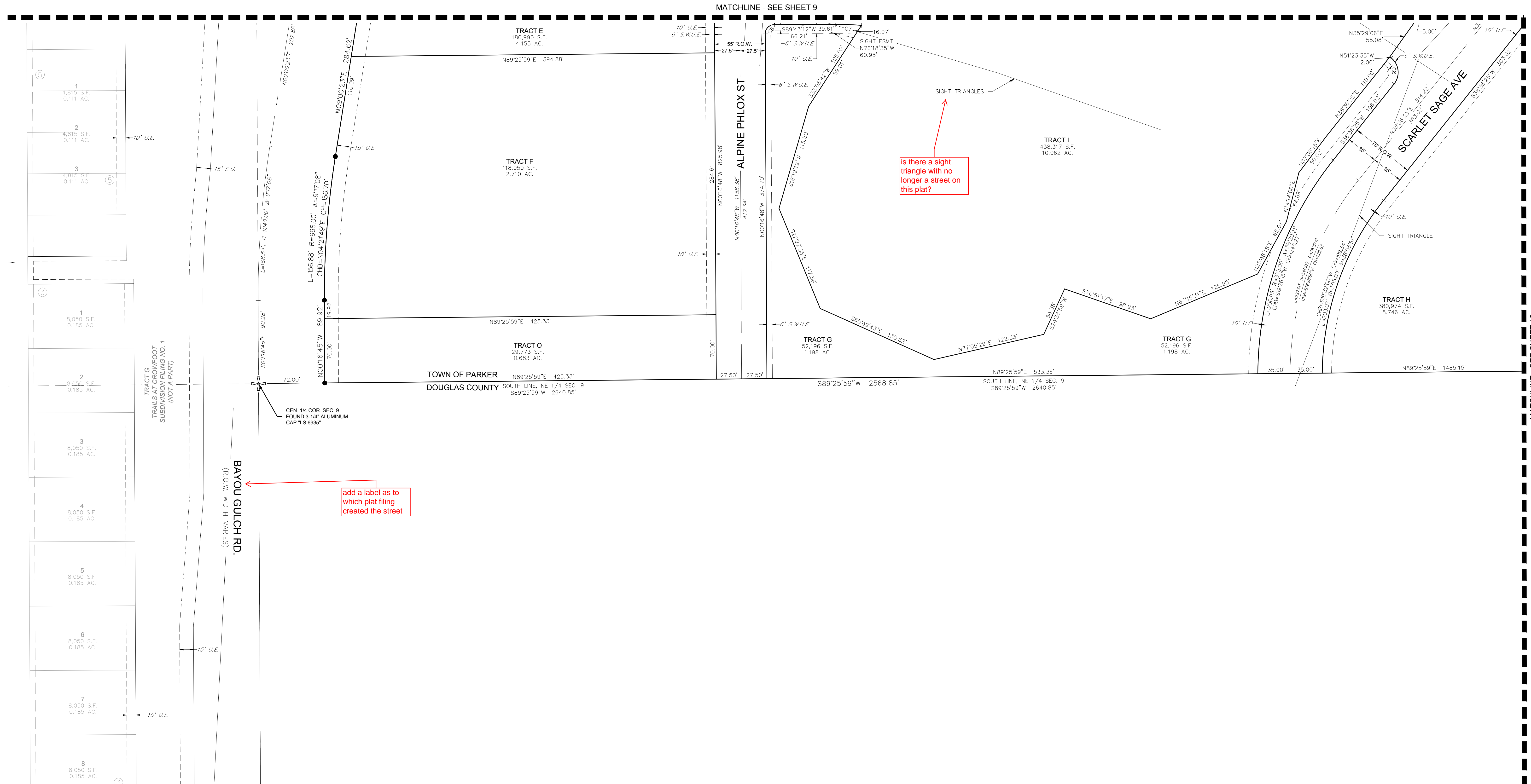
TOWN OF PARKER
DOUGLAS COUNTY

DOUGLAS COUNTY
ZONED - OPEN SPACE CONSERVATION
NOT A PART

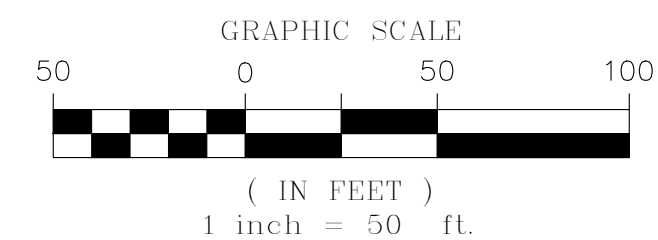
ENGINEER/SURVEYOR
CVL Consultants
of Colorado, Inc.
10333 E. Dry Creek Rd., Suite 240
Englewood, CO 80112
Tel: (720) 482-9526 / Fax: (720) 482-9546

TRAILS AT CROWFOOT FILING NO. 9

A PART OF THE SECTION 9, TOWNSHIP 7 SOUTH, RANGE 66 WEST OF THE 6th PRINCIPAL MERIDIAN,
TOWN OF PARKER, COUNTY OF DOUGLAS, STATE OF COLORADO
SHEET 11 OF 12



LEGEND	
	FND. SECTION CORNER AS DESCRIBED
	R.O.W. RIGHT-OF-WAY
	S.W.U.E. SIDEWALK & UTILITY EASEMENT
	U.E. UTILITY EASEMENT
	D.U.E. DRAINAGE AND UTILITY EASEMENT
	EX. U.E. EXISTING UTILITY EASEMENT
	P.W.S.D. U.E. PARKER WATER & SANITATION DISTRICT UTILITY EASEMENT
	SET NO. 6 REBAR, 30" LONG, w/2" ALUMINUM CAP STAMPED CVL LS NO. 25369 UNLESS OTHERWISE NOTED



CURVE TABLE					
CURVE NO.	LENGTH	RADIUS	DELTA	CHORD DIRECTION	CHORD LENGTH
C6	15.71'	10.00'	90°00'00"	S44°43'12"W	14.14'
C7	28.42'	312.50'	5°12'39"	N87°40'29"W	28.41'
C8	31.42'	20.00'	90°00'00"	N8°23'35"W	28.28'

ENGINEER/SURVEYOR
CVL Consultants
of Colorado, Inc.
10333 E. Dry Creek Rd., Suite 240
Englewood, CO 80112
Tel: (720) 482-9526 / Fax: (720) 482-9546