

TRAILS AT CROWFOOT FILING NO. 2

A REPLAT OF TRACT J OF TRAILS AT CROWFOOT FILING NO. 1
 A PART OF THE SECTIONS 4, AND 9, TOWNSHIP 7 SOUTH, RANGE 66 WEST OF THE 6th PRINCIPAL MERIDIAN,
 TOWN OF PARKER, COUNTY OF DOUGLAS, STATE OF COLORADO
 SHEET 1 OF 6

TOTAL ACREAGE = 22.164 ACRES, 101 LOTS, 5 TRACTS

DEDICATION STATEMENT:

THE UNDERSIGNED, BEING ALL THE OWNERS, MORTGAGEES, BENEFICIARIES OF DEEDS OF TRUST AND HOLDERS OF OTHER INTERESTS OF THE LANDS DESCRIBED HEREIN, HAVE LAID OUT, SUBDIVIDED AND PLATTED SAID LANDS INTO LOTS, TRACTS, BLOCKS, STREETS AND EASEMENTS AS SHOWN HEREON UNDER THE NAME AND SUBDIVISION OF THE TRAILS AT CROWFOOT FILING NO. 2. THE UTILITY EASEMENTS AS SHOWN HEREON ARE HEREBY DEDICATED FOR PUBLIC UTILITIES AND CABLE COMMUNICATION SYSTEMS AND OTHER PURPOSES AS SHOWN HEREON. THE ENTITIES RESPONSIBLE FOR PROVIDING THE UTILITY SERVICES FOR WHICH THE EASEMENTS ARE ESTABLISHED ARE HEREBY GRANTED THE PERPETUAL RIGHT OF INGRESS AND EGRESS FROM AND TO ADJACENT PROPERTIES FOR INSTALLATION, MAINTENANCE AND REPLACEMENT OF UTILITY LINES AND RELATED FACILITIES. THE OWNERS OF THE LANDS DESCRIBED HEREIN ARE RESPONSIBLE FOR THE MAINTENANCE AND OPERATION OF DRAINAGE EASEMENTS SHOWN HEREON AND RELATED FACILITIES, AS PROVIDED IN THE STORM DRAINAGE AND ENVIRONMENTAL CRITERIA MANUAL, AS AMENDED. THE UNDERSIGNED GRANTS THE TOWN OF PARKER A PERPETUAL RIGHT OF INGRESS AND EGRESS FROM AND TO ADJACENT PROPERTY TO MAINTAIN, OPERATE AND RECONSTRUCT THE DRAINAGE EASEMENTS AND RELATED FACILITIES COVERED BY CHAPTER 4.08 OF THE PARKER MUNICIPAL CODE, AS AMENDED; AND TO MAINTAIN, OPERATE AND RECONSTRUCT THE DRAINAGE EASEMENTS AND RELATED FACILITIES NOT COVERED BY CHAPTER 4.08 OF THE PARKER MUNICIPAL CODE AS AMENDED, WHEN THE OWNER(S) FAIL TO ADEQUATELY MAINTAIN SUCH DRAINAGE EASEMENTS AND RELATED FACILITIES, WHICH MAINTENANCE, OPERATION AND RECONSTRUCTION SHALL BE AT THE COST OF THE OWNER(S). ALL PUBLIC STREETS AND RIGHTS-OF-WAY SHOWN HEREON ARE DEDICATED AND CONVEYED TO THE TOWN OF PARKER, COLORADO, IN FEE SIMPLE ABSOLUTE, FOR PUBLIC USES AND PURPOSES. DRAINAGE AND DETENTION EASEMENTS AS SHOWN HEREON ARE HEREBY DEDICATED TO THE TOWN. THE TOWN IS HEREBY GRANTED THE PERPETUAL RIGHT OF INGRESS AND EGRESS FROM AND TO THE ADJACENT PROPERTIES FOR CONSTRUCTION, REPAIR, MAINTENANCE, OPERATION AND REPLACEMENT OF STORM SEWERS AND DRAINAGE FACILITIES. THE UNDERSIGNED GRANTS TO THE TOWN A SIGHT EASEMENT(S) AS SHOWN HEREON WITHIN THE SUBDIVISION TO MAINTAIN ADEQUATE SIGHT DISTANCE AT ALL ROADWAY INTERSECTIONS AS PROVIDED BY THE TOWN OF PARKER ROADWAY DESIGN AND CONSTRUCTION CRITERIA MANUAL, AS AMENDED. THE TOWN IS HEREBY GRANTED THE PERPETUAL RIGHT OF INGRESS AND EGRESS ACROSS ALL LOTS AND TRACTS WITHIN THE SUBDIVISION TO REMOVE ANY OBSTRUCTION TO THE PROPER SITE DISTANCE, INCLUDING, BUT NOT LIMITED TO, ANY STRUCTURE, FENCE, UTILITY BOX, RAISED MEDIAN AND LANDSCAPING, AT THE SOLE COST AND EXPENSE OF THE OWNER OF THE LOT AND/OR TRACT UPON WHICH SUCH OBSTRUCTION IS SITUATED. THE OWNERS OR ADJACENT PROPERTY OWNERS OF THE LANDS ARE RESPONSIBLE FOR THE MAINTENANCE AND OPERATION OF SIGHT EASEMENTS SHOWN HEREON. WHEN THE OWNER(S) OR ADJACENT OWNERS FAIL TO ADEQUATELY MAINTAIN SUCH SIGHT EASEMENTS, THE MAINTENANCE, OPERATION AND RECONSTRUCTION SHALL BE AT THE COST OF THE OWNER(S). THE UNDERSIGNED HEREBY DEDICATES SIDEWALK EASEMENTS AS SHOWN FOR PUBLIC SIDEWALK PURPOSES. THE PROPERTY OWNER SHALL BE RESPONSIBLE FOR MAINTAINING ALL SIDEWALK ADJACENT TO THE PROPERTY IN GOOD CONDITION AND FREE FROM ANY HAZARD. THE UNDERSIGNED GRANTS THE TOWN THE PERPETUAL RIGHTS OF INGRESS AND EGRESS UPON THE PROPERTY FOR THE OPERATION, MAINTENANCE, AND RECONSTRUCTION OF THE PUBLIC SIDEWALK WHEN THE OWNERS FAIL TO MAINTAIN SUCH PUBLIC SIDEWALK, WHICH MAINTENANCE, OPERATION AND RECONSTRUCTION SHALL BE AT THE COST OF THE OWNER(S). THE TOWN SHALL ALSO HAVE THE RIGHT TO REMOVE AN OBSTRUCTION THAT WOULD ADVERSELY AFFECT THE OPERATION AND MAINTENANCE OF THE SIDEWALK, AS DETERMINED BY THE TOWN.

ACKNOWLEDGEMENT

THE UNDERSIGNED, BEING ALL THE OWNERS, MORTGAGEES, BENEFICIARIES OF DEEDS OF TRUST AND HOLDERS OF OTHER INTERESTS OF THE LANDS DESCRIBED HEREIN, HEREBY ACKNOWLEDGE THAT ANY SUBDIVISION APPROVAL OBTAINED BY THE TOWN OF PARKER DOES NOT OBTAIN SAID UNDERSIGNED'S NEED OR RESPONSIBILITY TO COMPLY WITH THE REQUIREMENTS OF THE ENDANGERED SPECIES ACT OF 1973, 16 U.C.S. 1 531, ET SEQ., AS AMENDED OR WITH ANY OTHER APPLICABLE FEDERAL, STATE OR LOCAL LAWS OR REGULATIONS.

OWNER

MELODY HOMES INC, A DELAWARE CORPORATION

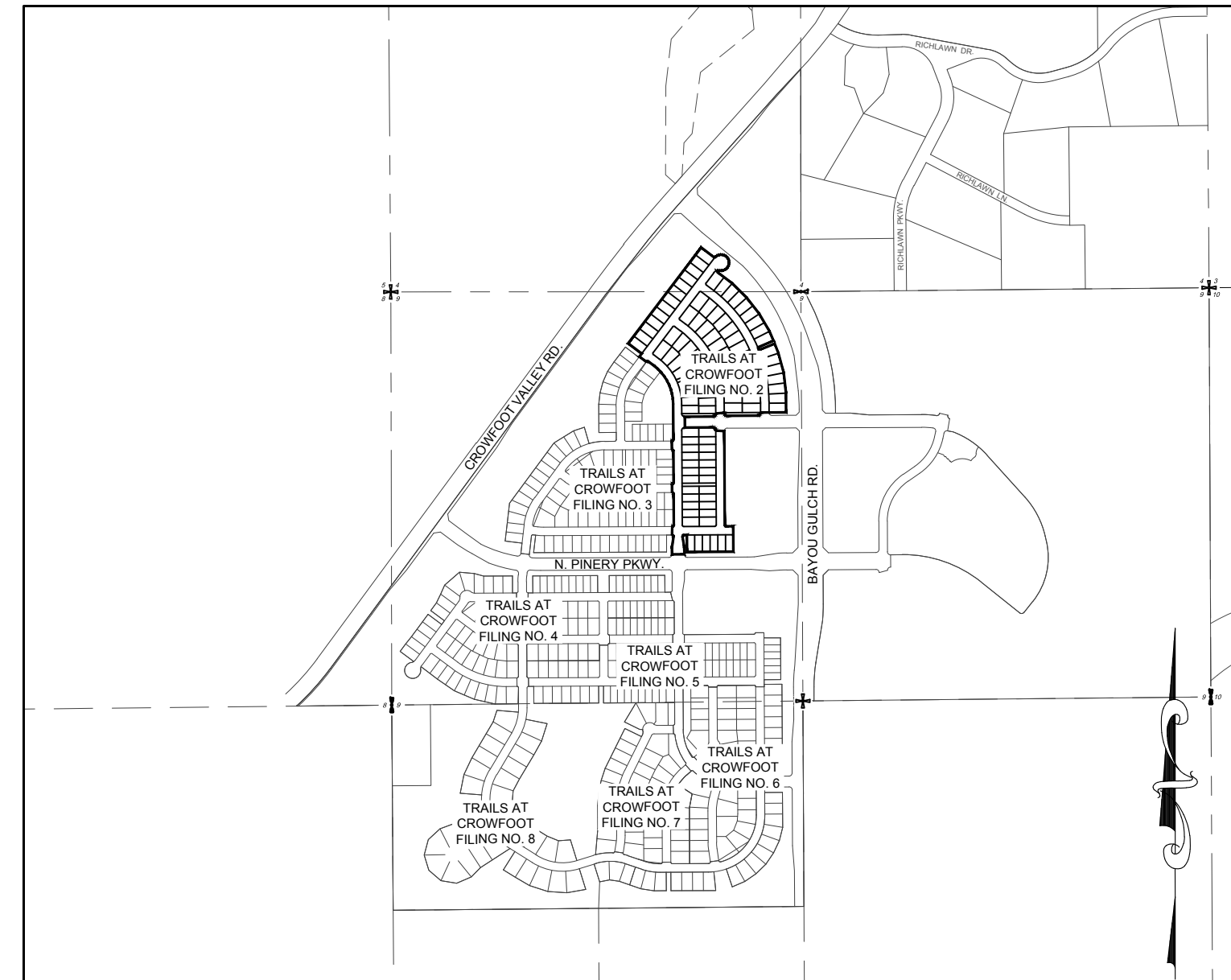
SIGNATURE

BY: _____
 AS _____ OF MELODY HOMES INC, A DELAWARE CORPORATION

SUBSCRIBED AND SWORN BEFORE ME THIS _____ DAY OF _____, 2018. BY _____ AS _____ OF MELODY HOMES INC, A DELAWARE CORPORATION.

WITNESS MY HAND AND OFFICIAL SEAL

MY COMMISSION EXPIRES _____ NOTARY PUBLIC _____



VICINITY MAP
 SCALE: 1" = 1000'

LEGAL DESCRIPTION:

A PARCEL OF LAND BEING A PART OF SECTIONS 4, AND 9, TOWNSHIP 7 SOUTH, RANGE 66 WEST OF THE 6TH PRINCIPAL MERIDIAN, TOWN OF PARKER, COUNTY OF DOUGLAS, STATE OF COLORADO, BEING MORE PARTICULARLY DESCRIBED AS FOLLOWS:

TRACT J, TRAILS AT CROWFOOT SUBDIVISION FILING NO. 1 AS RECORDED AT RECEPTION NO. _____ TOWN OF PARKER, COUNTY OF DOUGLAS, STATE OF COLORADO.

PLANNING COMMISSION STATEMENT:

THE PRELIMINARY PLAN FOR THIS PLAT WAS REVIEWED BY THE PLANNING COMMISSION ON _____ OCTOBER 12 _____, 2017.

PLANNING DIRECTOR, ON BEHALF OF THE PLANNING COMMISSION _____ DATE _____

CLERK AND RECORDER'S CERTIFICATION:

STATE OF COLORADO)
 COUNTY OF DOUGLAS)

I HEREBY CERTIFY THAT THIS PLAT WAS FILED IN MY OFFICE ON THIS _____ DAY OF _____, 2018 A.D., AT _____ A.M./P.M AT RECEPTION NUMBER _____

 COUNTY CLERK AND RECORDER

TITLE VERIFICATION:

WE, COMMONWEALTH LAND TITLE INSURANCE COMPANY, A QUALIFIED TITLE INSURANCE COMPANY, DO HEREBY CERTIFY THAT WE HAVE EXAMINED THE TITLE OF ALL LAND PLATTED HERON AND THAT TITLE TO SUCH LAND IS IN THE DEDICATOR(S) FREE AND CLEAR OF ALL LIENS, TAXES AND ENCUMBRANCES EXCEPT FOR THOSE ITEMS SHOWN IN TITLE COMMITMENT NO. H0513965-023-CNX-CN AMENDMENT NO. 3.

SIGNATURE _____

BY: _____

AS: _____ OF COMMONWEALTH LAND TITLE INSURANCE COMPANY

THE FOREGOING INSTRUMENT WAS ACKNOWLEDGED BEFORE ME THIS _____ DAY OF _____, 2018. BY _____

AS _____ OF COMMONWEALTH LAND TITLE INSURANCE COMPANY.

WITNESS MY HAND AND OFFICIAL SEAL

MY COMMISSION EXPIRES _____ NOTARY PUBLIC _____

APPROVAL OF TOWN COUNCIL:

THIS PLAT WAS APPROVED BY TOWN COUNCIL AND/OR, WHERE APPLICABLE, THE PLANNING DIRECTOR AND DIRECTOR OF ENGINEERING OF THE TOWN OF PARKER, COLORADO, ON THE _____ DAY OF _____, 2018, FOR FILING. THE DEDICATIONS ARE HEREBY ACCEPTED.

ALL EXPENSES INCURRED WITH RESPECT TO IMPROVEMENTS FOR ALL UTILITY SERVICES, PAVING, GRADING, CURBS, GUTTER, SIDEWALKS, ROAD LIGHTING, ROAD SIGNS, FLOOD PROTECTION DEVICES, DRAINAGE STRUCTURES, AND ALL OTHER IMPROVEMENTS THAT MAY BE REQUIRED SHALL BE THE RESPONSIBILITY OF THE SUBDIVIDER AND NOT THE TOWN OF PARKER. THE TOWN SHALL ONLY ACCEPT MAINTENANCE OF THE ROADWAY IMPROVEMENTS AFTER CONSTRUCTION HAS BEEN COMPLETED, AND AFTER THE WARRANTY PERIOD, IN ACCORDANCE WITH TOWN REGULATIONS.

THIS ACCEPTANCE DOES NOT GUARANTEE THAT THE SOIL CONDITIONS, SUBSURFACE GEOLOGY, GROUNDWATER CONDITIONS OR FLOODING CONDITIONS OF ANY LOT SHOWN HEREON ARE SUCH THAT A BUILDING PERMIT WILL BE ISSUED.

 PLANNING DIRECTOR, TOWN OF PARKER

 DIRECTOR OF ENGINEERING, TOWN OF PARKER

SURVEYOR'S CERTIFICATION:

I, WILLIAM F. HESSELBACH, JR., A PROFESSIONAL LAND SURVEYOR LICENSED TO PRACTICE LAND SURVEYING IN THE STATE OF COLORADO, DO HEREBY CERTIFY THAT THE SURVEY OF TRAILS AT CROWFOOT FILING NO. 2 WAS MADE BY ME OR DIRECTLY UNDER MY SUPERVISION ON OR ABOUT THE _____ DAY OF _____, 2018, AND THAT THE SURVEY IS BASED UPON MY KNOWLEDGE, INFORMATION AND BELIEF THAT ALL MONUMENTS EXIST AS SHOWN HEREON; IT HAS BEEN PREPARED IN ACCORDANCE WITH APPLICABLE STANDARDS OF PRACTICE, THAT MATHEMATICAL CLOSURE ERRORS ARE LESS THAN 1:50,000 (SECOND ORDER); AND THAT SAID PLAT HAS BEEN PREPARED IN FULL COMPLIANCE WITH ALL APPLICABLE LAWS OF THE STATE OF COLORADO DEALING WITH MONUMENTS, SUBDIVISIONS OR SURVEYING OF LAND AND ALL PROVISIONS, WITHIN MY CONTROL, OF THE TOWN SUBDIVISION REGULATIONS. THIS SURVEY IS NOT A GUARANTY OR WARRANTY, EITHER EXPRESSED OR IMPLIED, AND THE ACCOMPANYING PLAT ACCURATELY AND PROPERLY SHOWS SAID MINOR DEVELOPMENT PLAT AND THE SURVEY THEREOF.

I ATTEST THE ABOVE ON THIS _____ DAY OF 2018.

 WILLIAM F. HESSELBACH, JR., PLS NO. 25369
 FOR AND ON BEHALF OF CVL CONSULTANTS OF COLORADO, INC.
 10333 E. DRY CREEK ROAD, SUITE 240
 ENGLEWOOD, CO 80112
 (720)-249-3542

ENGINEER/SURVEYOR
CVL Consultants
 of Colorado, Inc.
 10333 E. Dry Creek Rd., Suite 240
 Englewood, CO 80112
 Tel: (720) 482-9526 / Fax: (720) 482-9546

TRAILS AT CROWFOOT FILING NO. 2

A REPLAT OF TRACT J OF TRAILS AT CROWFOOT FILING NO. 1
 A PART OF THE SECTIONS 4, AND 9, TOWNSHIP 7 SOUTH, RANGE 66 WEST OF THE 6th PRINCIPAL MERIDIAN,
 TOWN OF PARKER, COUNTY OF DOUGLAS, STATE OF COLORADO
 SHEET 2 OF 6

TOTAL ACREAGE = 22.164 ACRES, 101 LOTS, 5 TRACTS

NOTES:

1. NOTICE: ACCORDING TO COLORADO LAW YOU MUST COMMENCE ANY LEGAL ACTION BASED UPON ANY DEFECT IN THIS SURVEY WITHIN THREE (3) YEARS AFTER YOU FIRST DISCOVER SUCH DEFECT. IN NO EVENT MAY ANY ACTION BASED UPON ANY DEFECT IN THIS SURVEY BE COMMENCED MORE THAN TEN (10) YEARS FROM THE DATE OF THE CERTIFICATION SHOWN HEREON.
2. ANY PERSON WHO KNOWINGLY REMOVES, ALTERS OR DEFACTS ANY PUBLIC LAND SURVEY MONUMENT OR ACCESSORY COMMITS A CLASS TWO (2) MISDEMEANOR PURSUANT TO STATE STATUTE 18-4-508, C.R.S.
3. THIS SURVEY DOES NOT CONSTITUTE A TITLE SEARCH BY CVL CONSULTANTS OF COLORADO, INC. TO DETERMINE OWNERSHIP OR EASEMENTS OF RECORD. FOR ALL INFORMATION REGARDING EASEMENTS, RIGHTS-OF-WAY AND TITLE OF RECORD, CVL CONSULTANTS OF COLORADO, INC. RELIED UPON COMMITMENT FOR TITLE INSURANCE, COMMITMENT NO. H0513965-023-CNXC-CN AMENDMENT NO. 3, ISSUED BY COMMONWEALTH LAND TITLE INSURANCE COMPANY AND HAVING AN EFFECTIVE DATE OF JULY 26, 2018 AT 8:00 A.M.
4. BASIS OF BEARINGS: BASIS OF BEARINGS: THE EAST LINE OF THE NORTHEAST QUARTER OF SAID SECTION 9 BEING MONUMENTED AT THE NORTHEAST CORNER OF SAID SECTION 9 BY A 3-1/4" ALUMINUM CAP STAMPED LS 23053 AND AT THE EAST QUARTER CORNER OF SAID SECTION 9 BY A 2-1/2" ALUMINUM CAP STAMPED LS 6935 BEING ASSUMED TO BEAR SOUTH 00°15'06" EAST, 2648.70 FEET.
5. BENCHMARK: DOUGLAS COUNTY CONTROL POINT KNOWN AS 1.060032, BEING A 3-1/4" ALUMINUM CAP, BEING LOCATED IN THE SOUTHWEST QUARTER OF SECTION 33, TOWNSHIP 6 SOUTH, RANGE 66 WEST OF THE SIXTH PRINCIPAL MERIDIAN, HAVING A PUBLISHED ELEVATION OF 1799.2870 METERS (5903.13 FEET) NAVD '88 DATUM.
6. WITHIN ALL SIGHT TRIANGLES, LIMITED LANDSCAPING SHALL BE ALLOWED BUT NOT SOLID STRUCTURES. SOLID STRUCTURES SHALL INCLUDE, BUT NOT BE LIMITED TO, FENCES AND UTILITY BOXES. LANDSCAPING WITHIN THE INTERSECTION SIGHT DISTANCE TRIANGLES WILL BE LIMITED TO SHRUBS AND PLANTING THAT AT MATURITY WILL BE NO TALLER THAN TWO (2) FEET. TREES PLANTED WITHIN THE SIGHT DISTANCE TRIANGLE WILL NOT BE ALLOWED. LANDSCAPING WITHIN THE SIGHT DISTANCE TRIANGLE AREA SHALL BE MAINTAINED BY THE PROPERTY OWNER OR APPROPRIATE ASSOCIATION.
7. THOSE PORTIONS OF REAL PROPERTY WHICH ARE LABELED AS SIDEWALK & UTILITY EASEMENTS AND AS UTILITY EASEMENTS ON THIS PLAT ARE FOR THE INSTALLATION AND MAINTENANCE OF UTILITIES, INCLUDED, BUT NOT LIMITED TO, ELECTRIC LINES, GAS LINES, TELEPHONE LINES, TOGETHER WITH WITH A PERPETUAL RIGHT OF INGRESS AND EGRESS FOR INSTALLATION, MAINTENANCE AND REPLACEMENT OF SUCH LINES; SAID EASEMENTS AND RIGHT ARE TO BE UTILIZED IN A RESPONSIBLE AND PRUDENT MANNER.
 - A. AS SHOWN TEN-FOOT (10') WIDE DRY UTILITY EASEMENTS ARE HEREBY DEDICATED ON PRIVATE PROPERTY ABUTTING ALL PUBLIC STREETS, AND AROUND THE PERIMETER OF EACH COMMERCIAL/INDUSTRIAL LOT IN THE SUBDIVISION OR PLATTED AREA.
 - B. AS SHOWN ALLEY-TYPE LOTS, SIX-FOOT (6') WIDE DRY UTILITY EASEMENTS WITHIN THE LOTS FOR NATURAL GAS FACILITIES INCLUDING SPACE FOR SERVICE TRUCKS TO DRIVE ARE REQUIRED. IF GAS AND ELECTRIC ARE WITHIN THE SAME TRENCH, A TEN (10') WIDE DRY UTILITY EASEMENT IS REQUIRED, NOT TO OVERLAP ANY WET UTILITY EASEMENT.
8. THE LINEAL UNIT USED IN THE PREPARATION OF THIS PLAT IS THE U.S. SURVEY FOOT AS DEFINED BY THE UNITED STATES DEPARTMENT OF COMMERCE, NATIONAL INSTITUTE OF STANDARDS AND TECHNOLOGY.
9. TRACTS A, B, C, D, AND E WILL BE CONVEYED TO THE HOA VIA A SEPARATE DOCUMENT.
10. ALL LANDSCAPING LOCATED WITHIN THE TREE LAWN ADJACENT TO ANY HOA (PARK/OPEN SPACE) TRACTS SHALL BE THE RESPONSIBILITY OF THE HOA.
11. THERE ARE A TOTAL OF 101 LOTS AND 5 TRACTS IN THE TRAILS AT CROWFOOT SUBDIVISION FILING NO. 2.

TRACT SUMMARY TABLE					
TRACT	SQ. FT.	AREA	USE	OWNERSHIP	MAINTENANCE
A	4,671 S.F.	0.107 AC	OPEN SPACE / UTILITIES	H.O.A.	H.O.A.
B	4,502 S.F.	0.103 AC	OPEN SPACE / UTILITIES	H.O.A.	H.O.A.
C	4,535 S.F.	0.104 AC	OPEN SPACE / UTILITIES	H.O.A.	H.O.A.
D	4,228 S.F.	0.097 AC	OPEN SPACE / UTILITIES	H.O.A.	H.O.A.
E	4,400 S.F.	0.101 AC	OPEN SPACE / UTILITIES	H.O.A.	H.O.A.

LAND USE SUMMARY CHART			
TYPE	SQ. FT.	AREA	% OF TOTAL AREA
SINGLE FAMILY RESIDENTIAL LOTS	671,295 S.F.	15.412 AC.	69.54%
OPEN SPACE AREAS	22,337 S.F.	0.512 AC.	2.31%
ROAD RIGHTS OF WAY	271,812 S.F.	6.240 AC.	28.15%
TOTAL	965,444 S.F.	22.164 AC.	100%

FILING 2 MIN, MAX, AND AVERAGE LOT SIZE		
TYPE	SQ. FT.	AREA
MINIMUM LOT SIZE	5,500 S.F.	0.126 AC
MAXIMUM LOT SIZE	8,658 S.F.	0.199 AC
AVERAGE LOT SIZE	6,646 S.F.	0.153 AC

ENGINEER/SURVEYOR

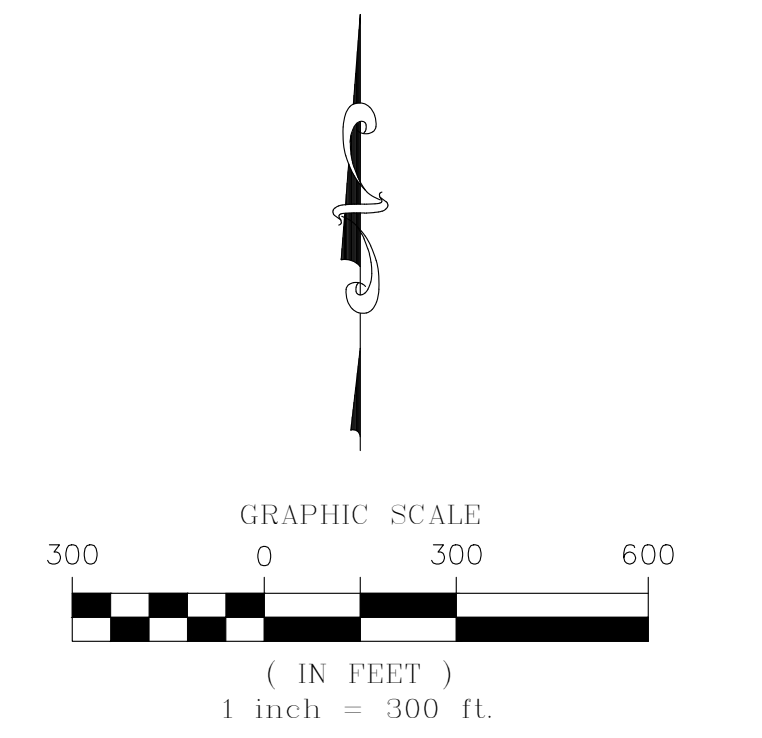
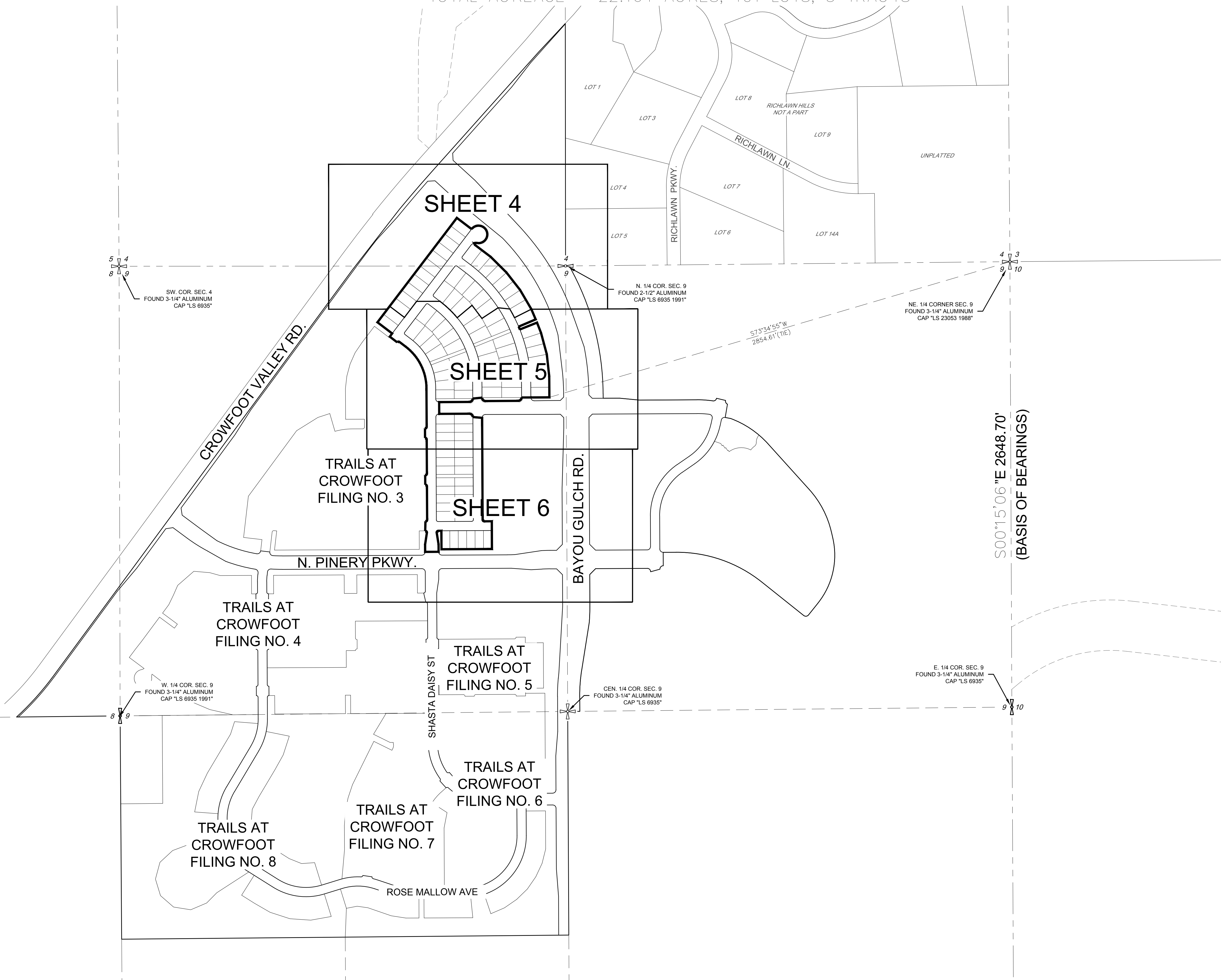
CVL Consultants
 of Colorado, Inc.
 10333 E. Dry Creek Rd., Suite 240
 Englewood, CO 80112
 Tel: (720) 482-9526 / Fax: (720) 482-9546

TRAILS AT CROWFOOT FILING NO. 2

A REPLAT OF TRACT J OF TRAILS AT CROWFOOT FILING NO. 1
 A PART OF THE SECTIONS 4, AND 9, TOWNSHIP 7 SOUTH, RANGE 66 WEST OF THE 6th PRINCIPAL MERIDIAN,
 TOWN OF PARKER, COUNTY OF DOUGLAS, STATE OF COLORADO

SHEET 3 OF 6

TOTAL ACREAGE = 22.164 ACRES, 101 LOTS, 5 TRACTS



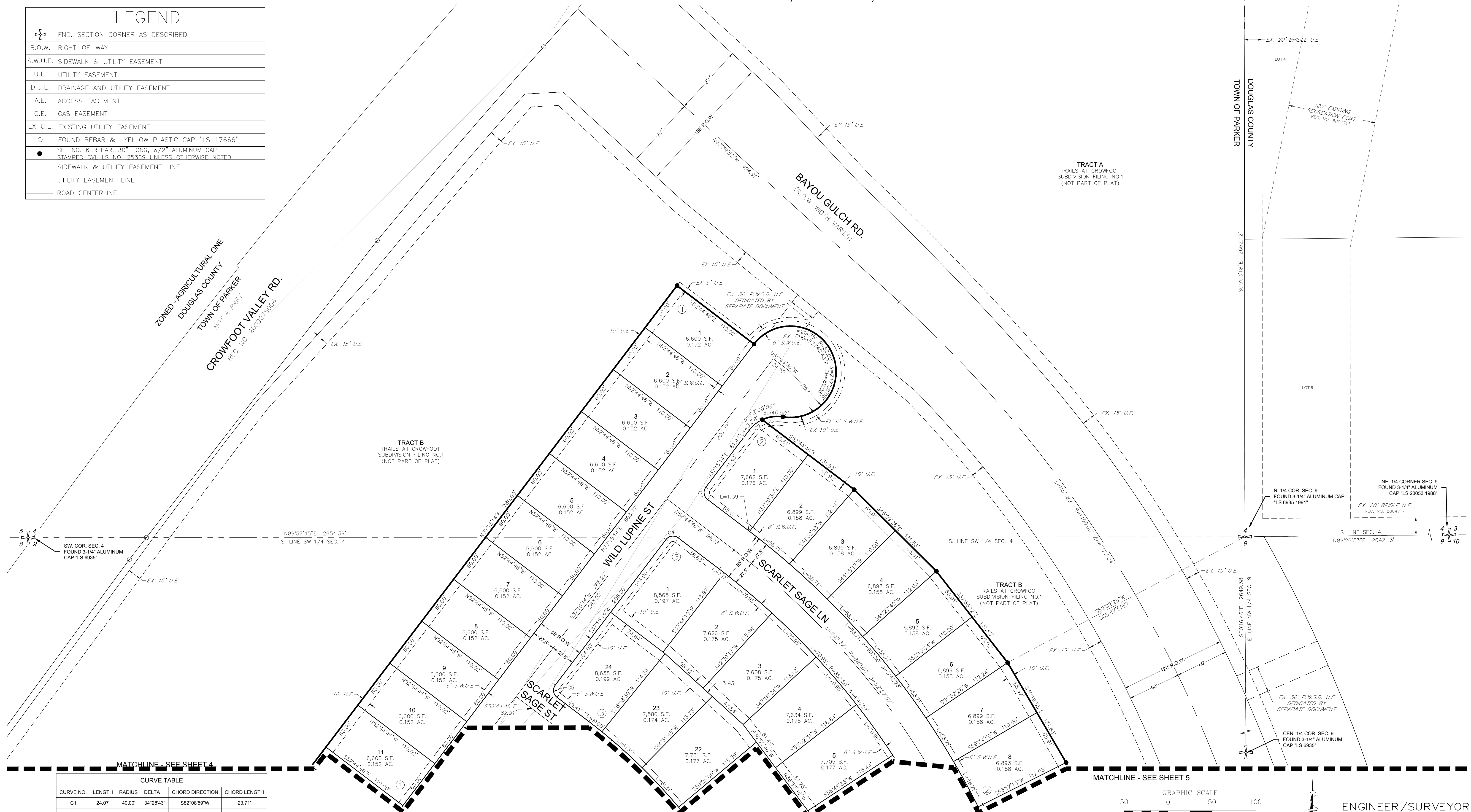
ENGINEER/SURVEYOR
CVL Consultants
 of Colorado, Inc.
 10333 E. Dry Creek Rd., Suite 240
 Englewood, CO 80112
 Tel: (720) 482-9526 / Fax: (720) 482-9546

TRAILS AT CROWFOOT FILING NO. 2

A REPLAT OF TRACT J OF TRAILS AT CROWFOOT FILING NO. 1
 A PART OF THE SECTIONS 4, AND 9, TOWNSHIP 7 SOUTH, RANGE 66 WEST OF THE 6th PRINCIPAL MERIDIAN,
 TOWN OF PARKER, COUNTY OF DOUGLAS, STATE OF COLORADO
 SHEET 4 OF 6

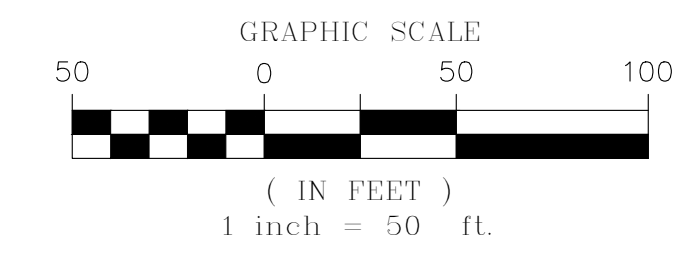
TOTAL ACREAGE = 22.164 ACRES, 101 LOTS, 5 TRACTS

LEGEND	
	FND. SECTION CORNER AS DESCRIBED
	R.O.W. RIGHT-OF-WAY
	S.W.U.E. SIDEWALK & UTILITY EASEMENT
	U.E. UTILITY EASEMENT
	D.U.E. DRAINAGE AND UTILITY EASEMENT
	A.E. ACCESS EASEMENT
	G.E. GAS EASEMENT
	EX U.E. EXISTING UTILITY EASEMENT
	○ FOUND REBAR & YELLOW PLASTIC CAP "LS 17666"
	● SET NO. 6 REBAR, 30" LONG, w/2" ALUMINUM CAP STAMPED CVL LS NO. 25389 UNLESS OTHERWISE NOTED
	- - - - - SIDEWALK & UTILITY EASEMENT LINE
	- - - - - UTILITY EASEMENT LINE
	_____ ROAD CENTERLINE



MATCHLINE - SEE SHEET 4

CURVE TABLE					
CURVE NO.	LENGTH	RADIUS	DELTA	CHORD DIRECTION	CHORD LENGTH
C1	24.07'	40.00'	34°28'43"	S82°08'59"W	23.71'
C2	19.31'	40.00'	27°39'23"	S51°04'56"W	18.12'
C3	15.71'	10.00'	90°00'00"	S7°44'46"E	14.14'
C4	15.71'	10.00'	90°00'00"	S82°15'14"W	14.14'
C5	15.71'	10.00'	90°00'00"	S7°44'46"E	14.14'

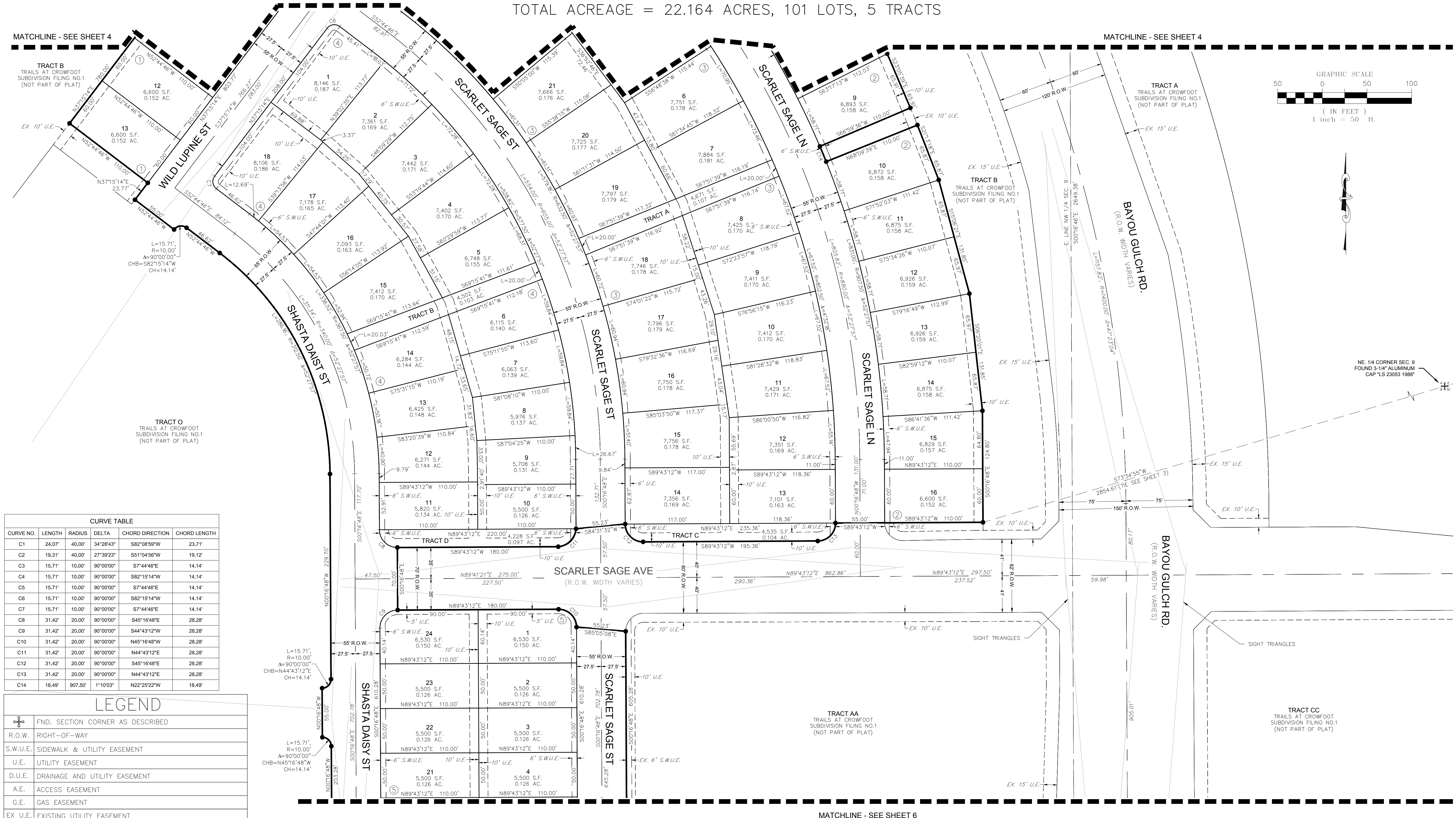


ENGINEER/SURVEYOR
CVL Consultants of Colorado, Inc.
 10333 E. Dry Creek Rd., Suite 240
 Englewood, CO 80112
 Tel: (720) 482-9526 / Fax: (720) 482-9546

TRAILS AT CROWFOOT FILING NO. 2

A REPLAT OF TRACT J OF TRAILS AT CROWFOOT FILING NO. 1
 A PART OF THE SECTIONS 4, AND 9, TOWNSHIP 7 SOUTH, RANGE 66 WEST OF THE 6th PRINCIPAL MERIDIAN,
 TOWN OF PARKER, COUNTY OF DOUGLAS, STATE OF COLORADO
 SHEET 5 OF 6

TOTAL ACREAGE = 22.164 ACRES, 101 LOTS, 5 TRACTS



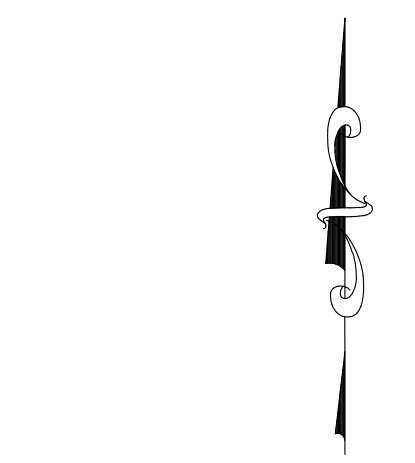
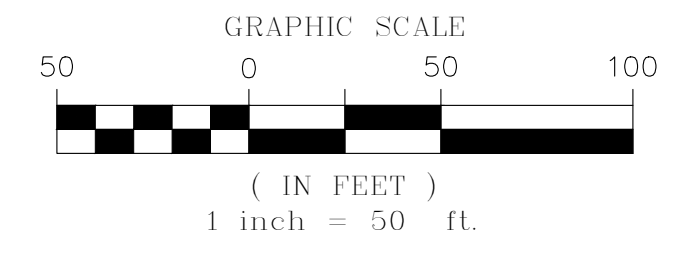
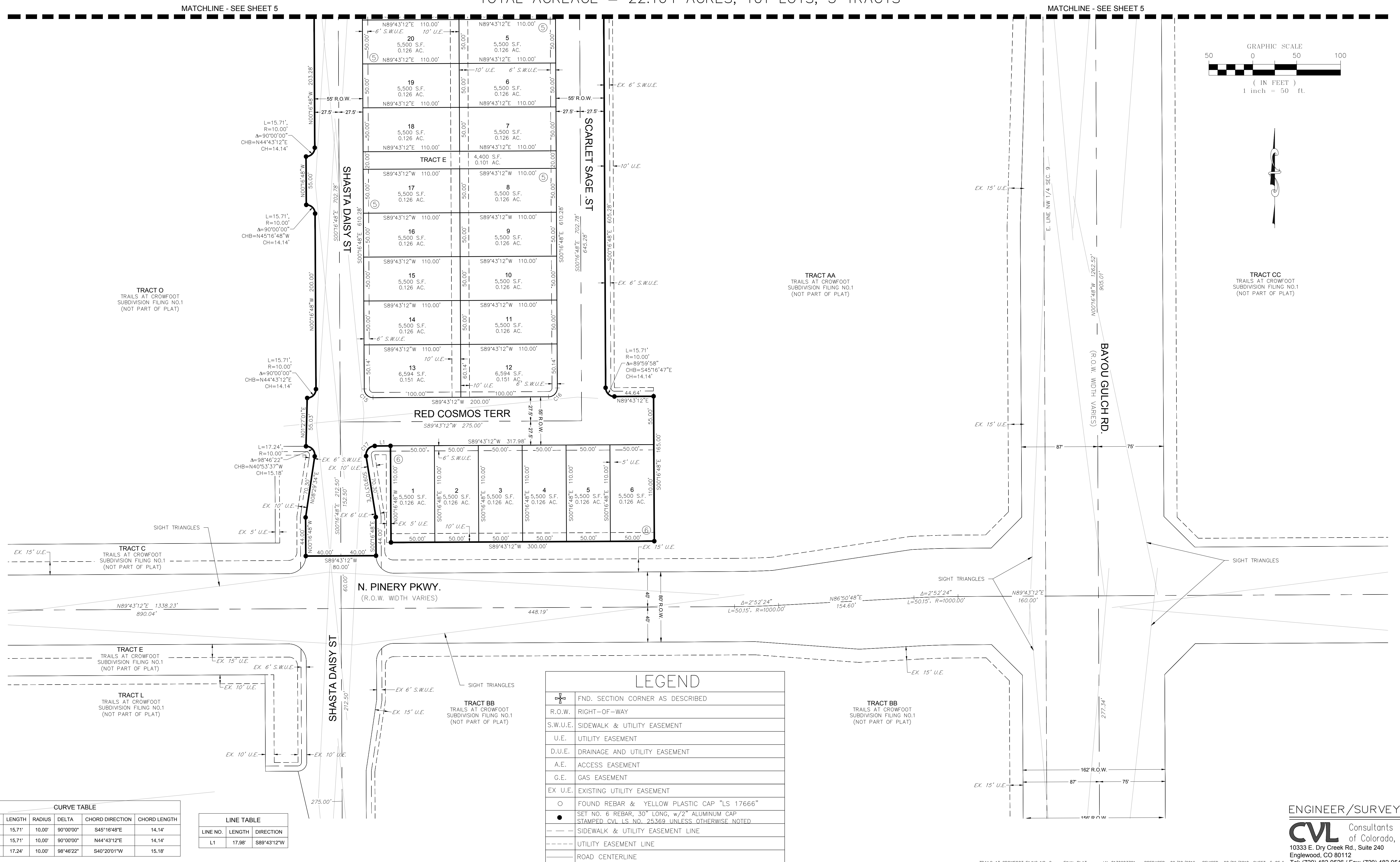
CURVE TABLE					
CURVE NO.	LENGTH	RADIUS	DELTA	CHORD DIRECTION	CHORD LENGTH
C1	24.07'	40.00'	34°28'43"	S82°08'59"W	23.71'
C2	19.31'	40.00'	27°39'23"	S51°04'56"W	19.12'
C3	15.71'	10.00'	90°00'00"	S7°44'46"E	14.14'
C4	15.71'	10.00'	90°00'00"	S82°15'14"W	14.14'
C5	15.71'	10.00'	90°00'00"	S7°44'46"E	14.14'
C6	15.71'	10.00'	90°00'00"	S82°15'14"W	14.14'
C7	15.71'	10.00'	90°00'00"	S7°44'46"E	14.14'
C8	31.42'	20.00'	90°00'00"	S45°16'48"E	28.28'
C9	31.42'	20.00'	90°00'00"	S44°43'12"W	28.28'
C10	31.42'	20.00'	90°00'00"	N45°16'48"W	28.28'
C11	31.42'	20.00'	90°00'00"	N44°43'12"E	28.28'
C12	31.42'	20.00'	90°00'00"	S45°16'48"E	28.28'
C13	31.42'	20.00'	90°00'00"	N44°43'12"E	28.28'
C14	18.49'	907.50'	1°10'03"	N22°25'22"W	18.49'

LEGEND	
	FND. SECTION CORNER AS DESCRIBED
	R.O.W. RIGHT-OF-WAY
	S.W.U.E. SIDEWALK & UTILITY EASEMENT
	U.E. UTILITY EASEMENT
	D.U.E. DRAINAGE AND UTILITY EASEMENT
	A.E. ACCESS EASEMENT
	G.E. GAS EASEMENT
	EX U.E. EXISTING UTILITY EASEMENT
	○ FOUND REBAR & YELLOW PLASTIC CAP "LS 17666"
	● SET NO. 6 REBAR, 30" LONG, w/2" ALUMINUM CAP
	STAMPED C.V.L. NO. 25369 UNLESS OTHERWISE NOTED
	--- SIDEWALK & UTILITY EASEMENT LINE
	---- UTILITY EASEMENT LINE
	==== ROAD CENTERLINE

TRAILS AT CROWFOOT FILING NO. 2

A REPLAT OF TRACT J OF TRAILS AT CROWFOOT FILING NO. 1
 A PART OF THE SECTIONS 4, AND 9, TOWNSHIP 7 SOUTH, RANGE 66 WEST OF THE 6th PRINCIPAL MERIDIAN,
 TOWN OF PARKER, COUNTY OF DOUGLAS, STATE OF COLORADO
 SHEET 6 OF 6

TOTAL ACREAGE = 22.164 ACRES, 101 LOTS, 5 TRACTS



TRACT O
 TRAILS AT CROWFOOT
 SUBDIVISION FILING NO.1
 (NOT PART OF PLAT)

TRACT AA
 TRAILS AT CROWFOOT
 SUBDIVISION FILING NO.1
 (NOT PART OF PLAT)

TRACT CC
 TRAILS AT CROWFOOT
 SUBDIVISION FILING NO.1
 (NOT PART OF PLAT)

TRACT C
 TRAILS AT CROWFOOT
 SUBDIVISION FILING NO.1
 (NOT PART OF PLAT)

TRACT E
 TRAILS AT CROWFOOT
 SUBDIVISION FILING NO.1
 (NOT PART OF PLAT)

TRACT L
 TRAILS AT CROWFOOT
 SUBDIVISION FILING NO.1
 (NOT PART OF PLAT)

TRACT BB
 TRAILS AT CROWFOOT
 SUBDIVISION FILING NO.1
 (NOT PART OF PLAT)

TRACT BB
 TRAILS AT CROWFOOT
 SUBDIVISION FILING NO.1
 (NOT PART OF PLAT)

LEGEND	
	FND. SECTION CORNER AS DESCRIBED
	R.O.W. RIGHT-OF-WAY
	S.W.U.E. SIDEWALK & UTILITY EASEMENT
	U.E. UTILITY EASEMENT
	D.U.E. DRAINAGE AND UTILITY EASEMENT
	A.E. ACCESS EASEMENT
	G.E. GAS EASEMENT
	EX U.E. EXISTING UTILITY EASEMENT
	○ FOUND REBAR & YELLOW PLASTIC CAP "LS 17666"
	● SET NO. 6 REBAR, 30" LONG, w/2" ALUMINUM CAP STAMPED C.V.L. LS. NO. 25369 UNLESS OTHERWISE NOTED
	--- SIDEWALK & UTILITY EASEMENT LINE
	----- UTILITY EASEMENT LINE
	_____ ROAD CENTERLINE

CURVE TABLE					
CURVE NO.	LENGTH	RADIUS	DELTA	CHORD DIRECTION	CHORD LENGTH
C15	15.71'	10.00'	90°00'00"	S45°16'48"E	14.14'
C16	15.71'	10.00'	90°00'00"	N44°43'12"E	14.14'
C17	17.24'	10.00'	98°46'22"	S40°20'01"W	15.18'

LINE TABLE		
LINE NO.	LENGTH	DIRECTION
L1	17.98'	S89°43'12"W

ENGINEER/SURVEYOR
CVL Consultants
 of Colorado, Inc.
 10333 E. Dry Creek Rd., Suite 240
 Englewood, CO 80112
 Tel: (720) 482-9526 / Fax: (720) 482-9546