

# TRAILS AT CROWFOOT SUBDIVISION FILING NO. 2 ADDRESS PLAT

A RESUBDIVISION OF LOT 1, BLOCK 1 OF TRAILS AT CROWFOOT FILING NO. 1  
 A PART OF THE SECTIONS 4, 8 AND 9, TOWNSHIP 7 SOUTH, RANGE 66 WEST OF THE 6th PRINCIPAL MERIDIAN,  
 TOWN OF PARKER, COUNTY OF DOUGLAS, STATE OF COLORADO  
 SHEET 2 OF 4

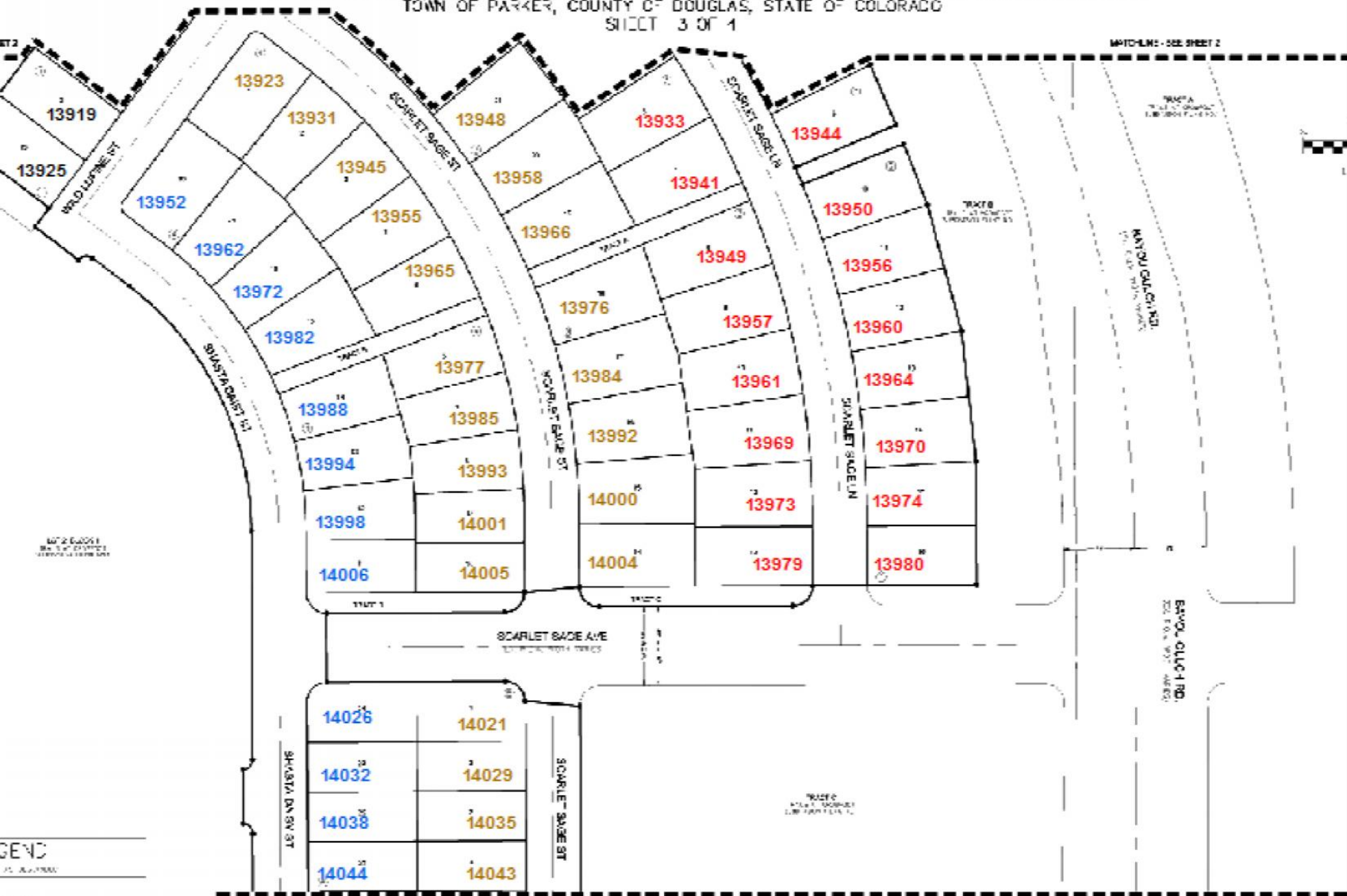
LEGEND	
+	TRAIL SECTION (WHERE AS DESCRIBED)
D-D	ROOF-DRAINAGE
RUC	SEWER & STORM EXHIBIT
GA	UTILITY GASES
UC	DRINKING AND STORM EXHIBIT
AE	ACCESS EXHIBIT
GE	GAS EXHIBIT
UE	UTILITY EXHIBIT
O	FOUND HOLE & KILLER PLUGS CAP TO 11860"
•	SET TO 6 INCH 30" LONG 4/2" ALUMINUM CAP STAMPED C.V. NO. 13888 UNLESS OTHERWISE NOTED



ENGINEER  
**CVL**  
 CONSULTING  
 ENGINEERS  
 10101 E. 11th Ave. Suite 100  
 Denver, CO 80231  
 303.751.4000

# TRAILS AT CROWFOOT SUBDIVISION FILING NO. 2 ADDRESS PLAT

A RESUBDIVISION OF LOT 1, BLOCK 1 OF TRAILS AT CROWFOOT FILING NO. 1  
 A PART OF THE SECTIONS 4, 8 AND 9, TOWNSHIP 7 SOUTH, RANGE 66 WEST OF THE 8th PRINCIPAL MERIDIAN,  
 TOWN OF PARKER, COUNTY OF DOUGLAS, STATE OF COLORADO  
 SHEET 3 OF 4



GENC  
 11. 11. 1999  
 11. 11. 1999

# TRAILS AT CROWFOOT SUBDIVISION FILING NO. 2 ADDRESS PLAN

A RESUBDIVISION OF LOT 1, BLOCK 1 OF TRAILS AT CROWFOOT FILING NO. 1  
 A PART OF SECTIONS 4, 8 AND 9, TOWNSHIP 7 SOUTH, RANGE 58 WEST OF THE 6TH PRINCIPAL MERIDIAN,  
 TOWN OF PARKER, COUNTY OF DOUGLAS, STATE OF COLORADO

DATE LINE - SEE SHEET 3 SHEET 4 OF 4

