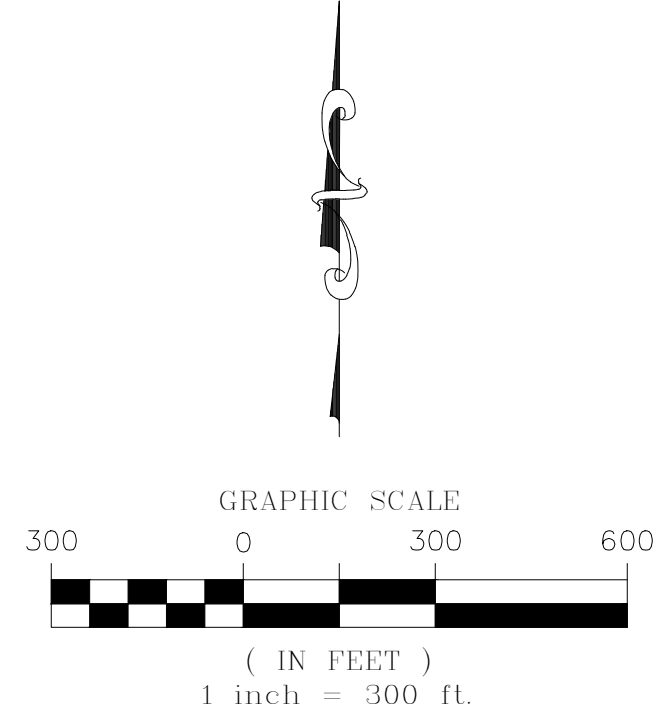
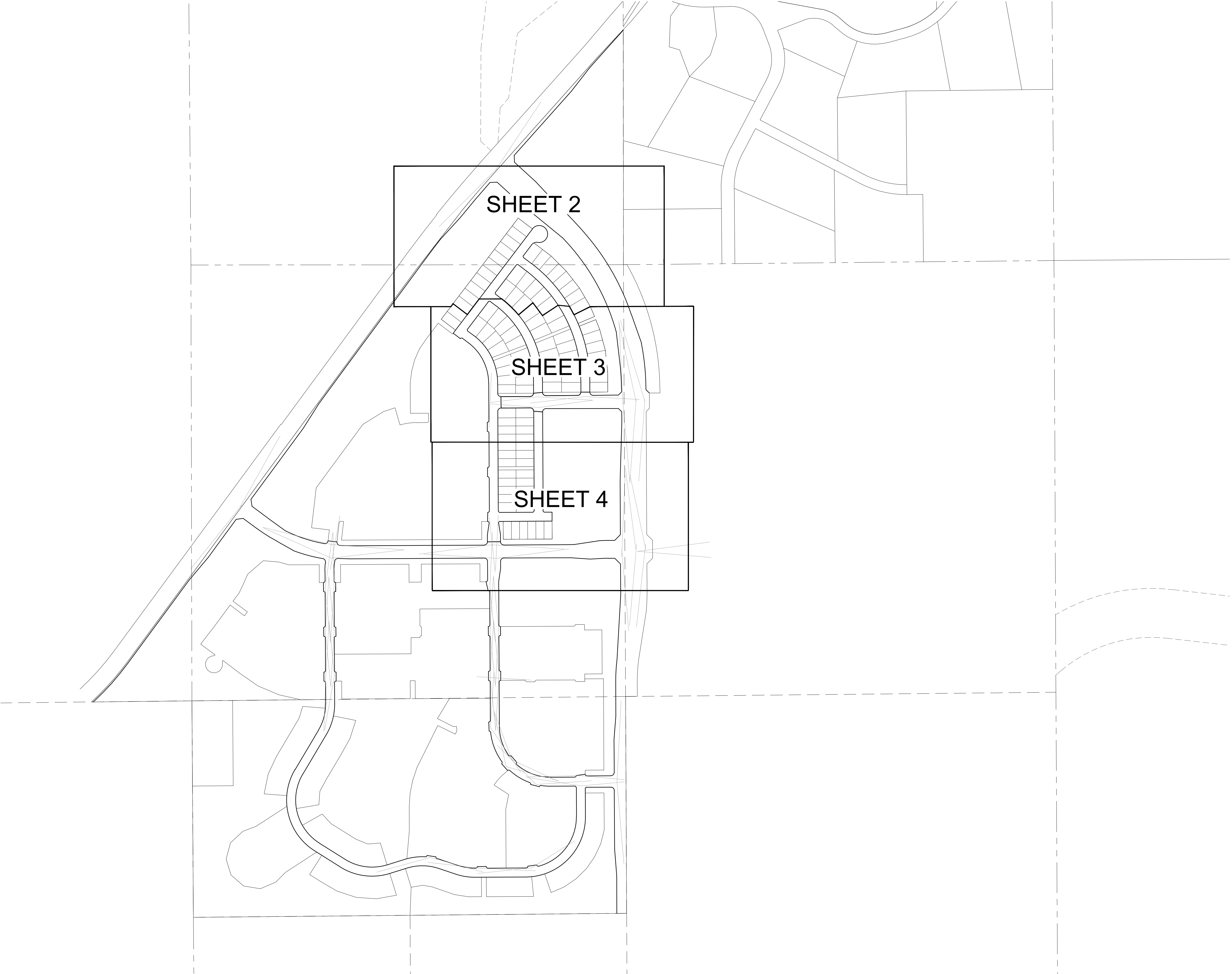


TRAILS AT CROWFOOT SUBDIVISION FILING NO. 2 ADDRESS PLAT

A RESUBDIVISION OF LOT 1, BLOCK 1 OF TRAILS AT CROWFOOT FILING NO. 1
A PART OF THE SECTIONS 4, 8 AND 9, TOWNSHIP 7 SOUTH, RANGE 66 WEST OF THE 6th PRINCIPAL MERIDIAN,
TOWN OF PARKER, COUNTY OF DOUGLAS, STATE OF COLORADO
SHEET 1 OF 4



ENGINEER/SURVEYOR
CVL Consultants
of Colorado, Inc.
10333 E. Dry Creek Rd., Suite 240
Englewood, CO 80112
Tel: (720) 482-9526 / Fax: (720) 482-9546

TRAILS AT CROWFOOT SUBDIVISION FILING NO. 2 ADDRESS PLAT

A RESUBDIVISION OF LOT 1, BLOCK 1 OF TRAILS AT CROWFOOT FILING NO. 1
 A PART OF THE SECTIONS 4, 8 AND 9, TOWNSHIP 7 SOUTH, RANGE 66 WEST OF THE 6th PRINCIPAL MERIDIAN,
 TOWN OF PARKER, COUNTY OF DOUGLAS, STATE OF COLORADO
 SHEET 2 OF 4

CEN. 1/4 COR. SEC. 4
 FOUND 3-1/4" ALUMINUM CAP
 "LS 6935"

LEGEND	
	FND. SECTION CORNER AS DESCRIBED
R.O.W.	RIGHT-OF-WAY
S.W.U.E.	SIDEWALK & UTILITY EASEMENT
U.E.	UTILITY EASEMENT
D.U.E.	DRAINAGE AND UTILITY EASEMENT
A.E.	ACCESS EASEMENT
G.E.	GAS EASEMENT
EX U.E.	EXISTING UTILITY EASEMENT
	FOUND REBAR & YELLOW PLASTIC CAP "LS 17666"
	SET NO. 6 REBAR, 30" LONG, w/2" ALUMINUM CAP STAMPED CVL LS NO. 25369 UNLESS OTHERWISE NOTED



DOUGLAS COUNTY
 TOWN OF PARKER

LOT 4

LOT 5

POINT OF BEGINNING (PARCEL 1)
 POINT OF COMMENCEMENT (PARCEL 2)
 N 1/4 COR. SEC. 9
 FOUND 3-1/4" ALUMINUM CAP
 "LS 6935 1991"

VARYING WIDTH R.O.W.
 TO BE DEDICATED BY
 THIS PLAT

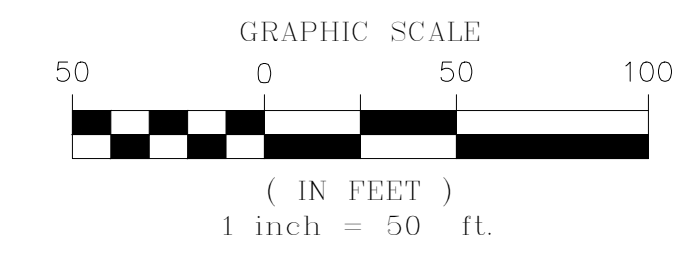
VARYING WIDTH R.O.W.
 TO BE DEDICATED BY
 THIS PLAT

TRACT B
 TRAILS AT CROWFOOT
 SUBDIVISION FILING NO.1

TRACT B
 TRAILS AT CROWFOOT
 SUBDIVISION FILING NO.1

MATCHLINE - SEE SHEET 3

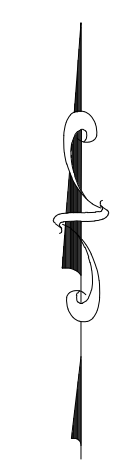
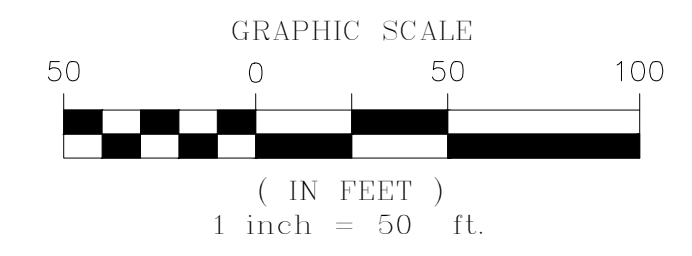
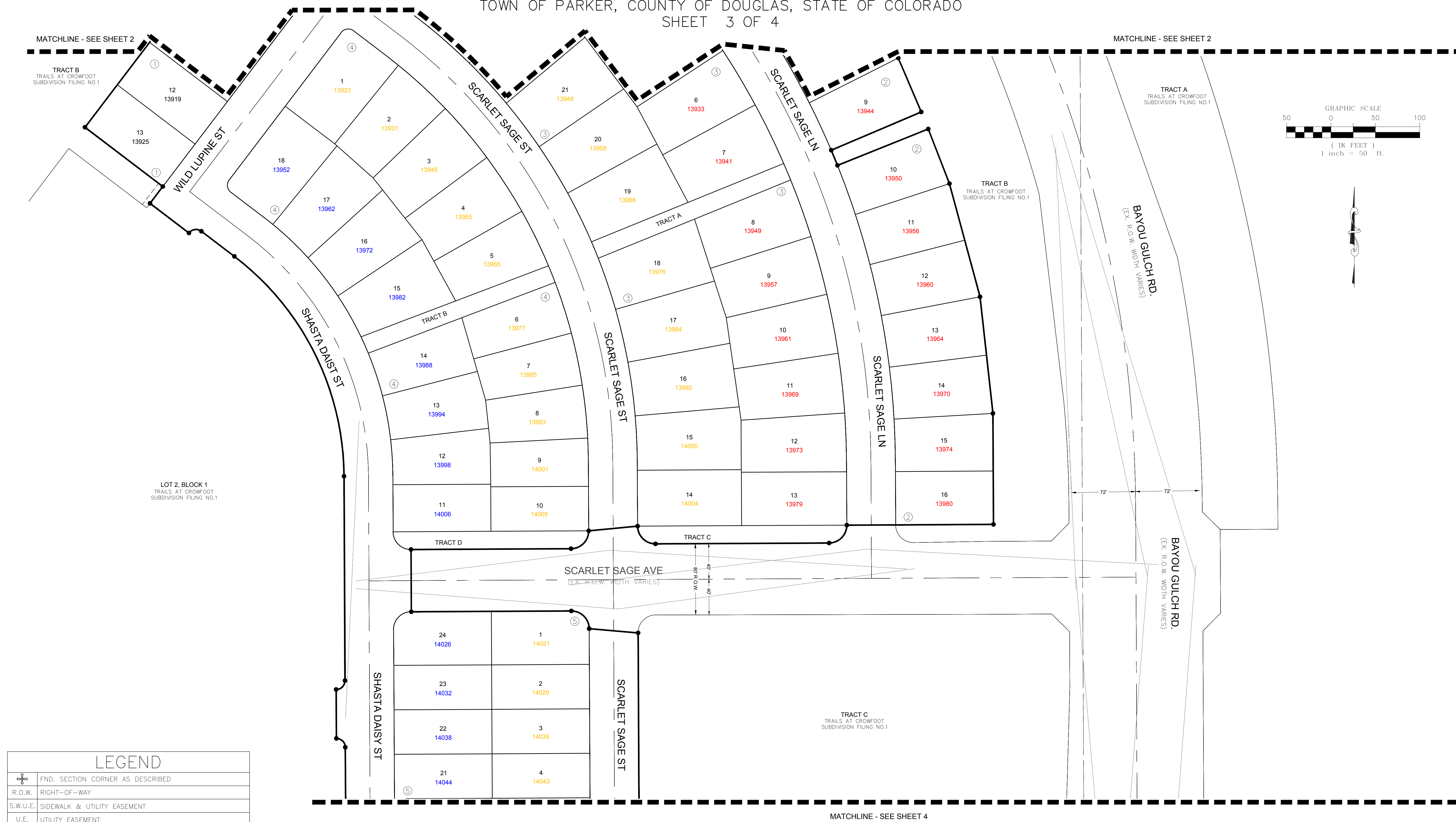
MATCHLINE - SEE SHEET 3



ENGINEER/SURVEYOR
CVL Consultants
 of Colorado, Inc.
 10333 E. Dry Creek Rd., Suite 240
 Englewood, CO 80112
 Tel: (720) 482-9526 / Fax: (720) 482-9546

TRAILS AT CROWFOOT SUBDIVISION FILING NO. 2 ADDRESS PLAT

A RESUBDIVISION OF LOT 1, BLOCK 1 OF TRAILS AT CROWFOOT FILING NO. 1
 A PART OF THE SECTIONS 4, 8 AND 9, TOWNSHIP 7 SOUTH, RANGE 66 WEST OF THE 6th PRINCIPAL MERIDIAN,
 TOWN OF PARKER, COUNTY OF DOUGLAS, STATE OF COLORADO
 SHEET 3 OF 4



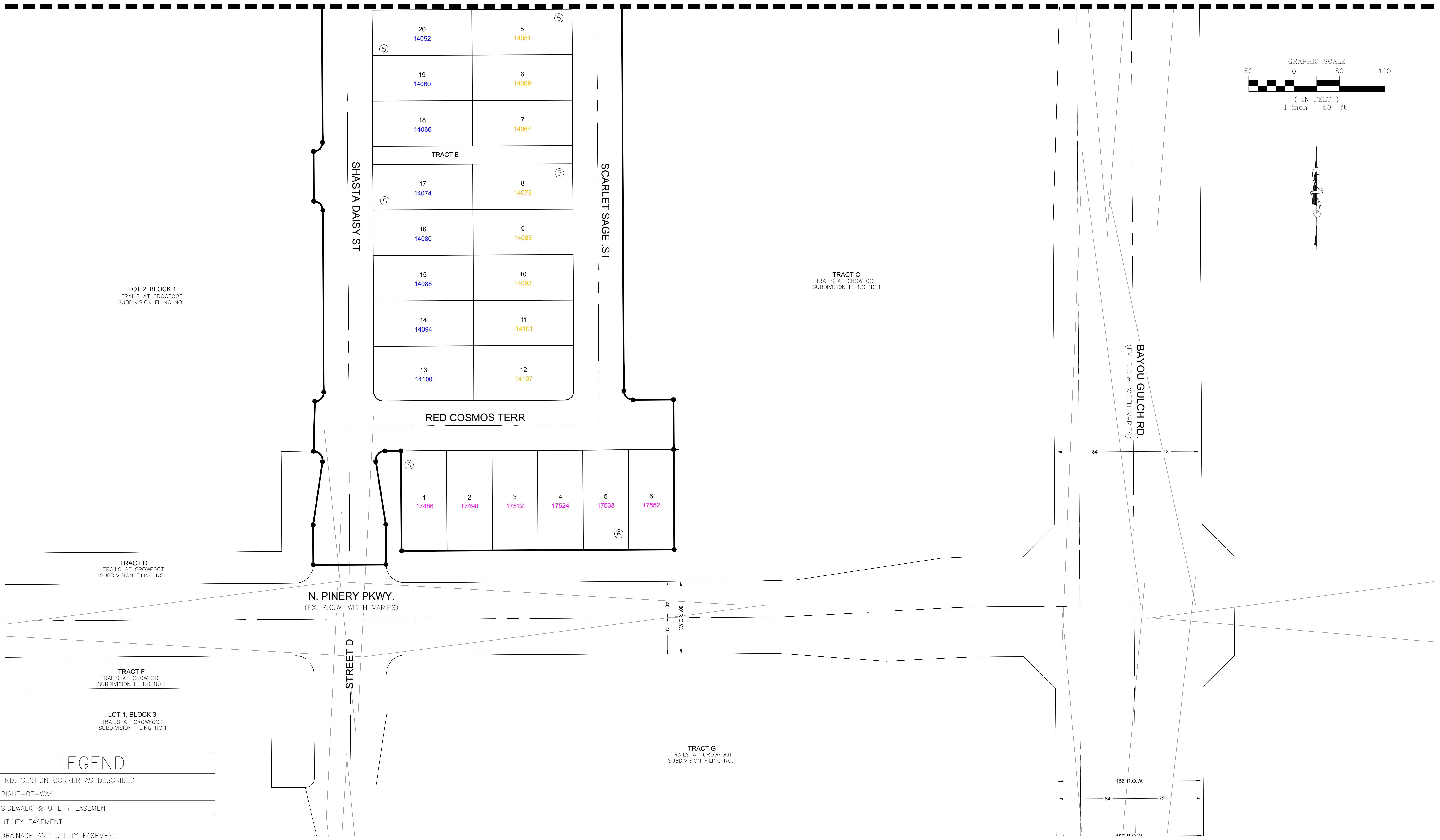
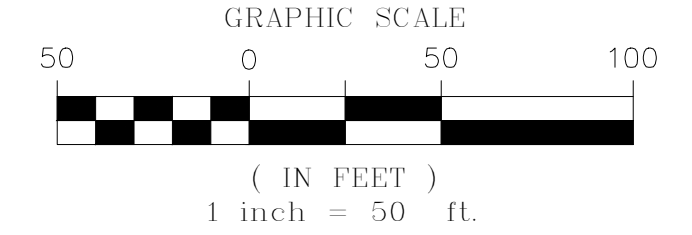
LEGEND	
	FND. SECTION CORNER AS DESCRIBED
	R.O.W. RIGHT-OF-WAY
	S.W.U.E. SIDEWALK & UTILITY EASEMENT
	U.E. UTILITY EASEMENT
	D.U.E. DRAINAGE AND UTILITY EASEMENT
	A.E. ACCESS EASEMENT
	G.E. GAS EASEMENT
	EX U.E. EXISTING UTILITY EASEMENT
	○ FOUND REBAR & YELLOW PLASTIC CAP "LS 17666"
	● SET NO. 6 REBAR, 30" LONG, w/2" ALUMINUM CAP STAMPED CVL LS NO. 25369 UNLESS OTHERWISE NOTED

ENGINEER/SURVEYOR
CVL Consultants
 of Colorado, Inc.
 10333 E. Dry Creek Rd., Suite 240
 Englewood, CO 80112
 Tel: (720) 482-9526 / Fax: (720) 482-9546

TRAILS AT CROWFOOT SUBDIVISION FILING NO. 2 ADDRESS PLAT

A RESUBDIVISION OF LOT 1, BLOCK 1 OF TRAILS AT CROWFOOT FILING NO. 1
 A PART OF THE SECTIONS 4, 8 AND 9, TOWNSHIP 7 SOUTH, RANGE 66 WEST OF THE 6th PRINCIPAL MERIDIAN,
 TOWN OF PARKER, COUNTY OF DOUGLAS, STATE OF COLORADO
 SHEET 4 OF 4

MATCHLINE - SEE SHEET 3



LEGEND	
	FND. SECTION CORNER AS DESCRIBED
	R.O.W. RIGHT-OF-WAY
	S.W.U.E. SIDEWALK & UTILITY EASEMENT
	U.E. UTILITY EASEMENT
	D.U.E. DRAINAGE AND UTILITY EASEMENT
	A.E. ACCESS EASEMENT
	G.E. GAS EASEMENT
	EX U.E. EXISTING UTILITY EASEMENT
	SET NO. 6 REBAR, 30" LONG, w/2" ALUMINUM CAP STAMPED CVL LS NO. 25369 UNLESS OTHERWISE NOTED

ENGINEER/SURVEYOR
CVL Consultants
 of Colorado, Inc.
 10333 E. Dry Creek Rd., Suite 240
 Englewood, CO 80112
 Tel: (720) 482-9526 / Fax: (720) 482-9546