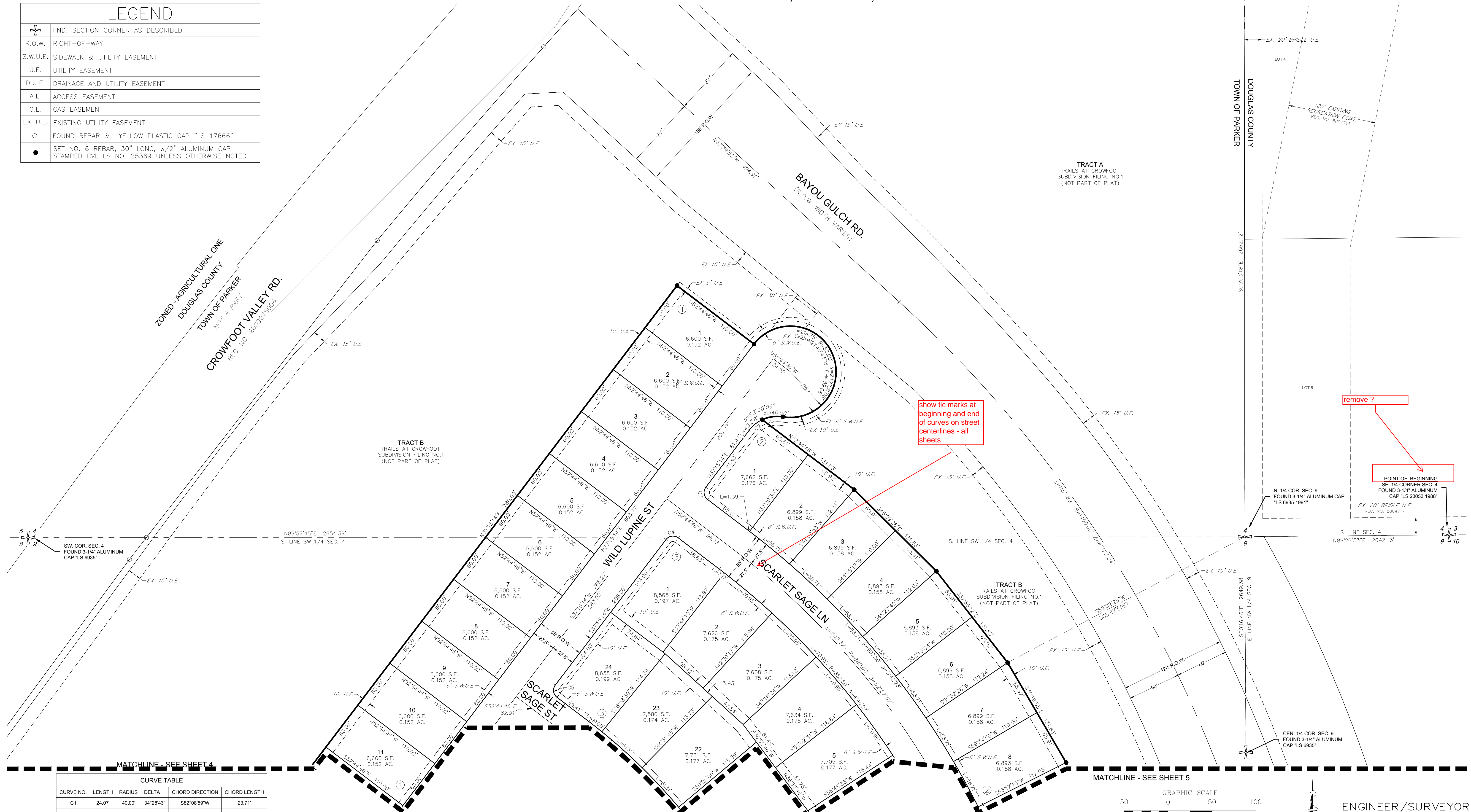


TRAILS AT CROWFOOT SUBDIVISION FILING NO. 2

A REPLAT OF TRACT J OF TRAILS AT CROWFOOT FILING NO. 1
 A PART OF THE SECTIONS 4, AND 9, TOWNSHIP 7 SOUTH, RANGE 66 WEST OF THE 6th PRINCIPAL MERIDIAN,
 TOWN OF PARKER, COUNTY OF DOUGLAS, STATE OF COLORADO
 SHEET 4 OF 6

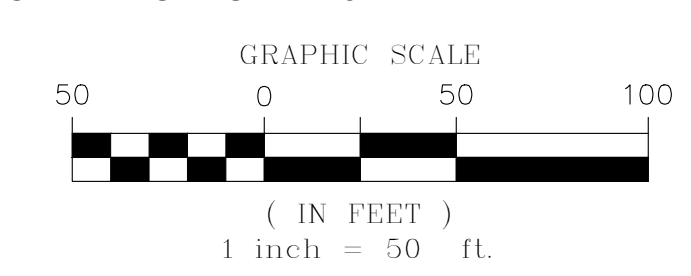
TOTAL ACREAGE = 22.164 ACRES, 101 LOTS, 5 TRACTS

LEGEND	
	FND. SECTION CORNER AS DESCRIBED
	R.O.W. RIGHT-OF-WAY
	S.W.U.E. SIDEWALK & UTILITY EASEMENT
	U.E. UTILITY EASEMENT
	D.U.E. DRAINAGE AND UTILITY EASEMENT
	A.E. ACCESS EASEMENT
	G.E. GAS EASEMENT
	EX U.E. EXISTING UTILITY EASEMENT
	FOUND REBAR & YELLOW PLASTIC CAP "LS 17666"
	SET NO. 6 REBAR, 30" LONG, w/2" ALUMINUM CAP STAMPED CVL LS NO. 25369 UNLESS OTHERWISE NOTED



MATCHLINE - SEE SHEET 4

CURVE TABLE					
CURVE NO.	LENGTH	RADIUS	DELTA	CHORD DIRECTION	CHORD LENGTH
C1	24.07'	40.00'	34°28'43"	S82°08'59"W	23.71'
C2	19.31'	40.00'	27°39'23"	S51°04'56"W	18.12'
C3	15.71'	10.00'	90°00'00"	S7°44'46"E	14.14'
C4	15.71'	10.00'	90°00'00"	S82°15'14"W	14.14'
C5	15.71'	10.00'	90°00'00"	S7°44'46"E	14.14'

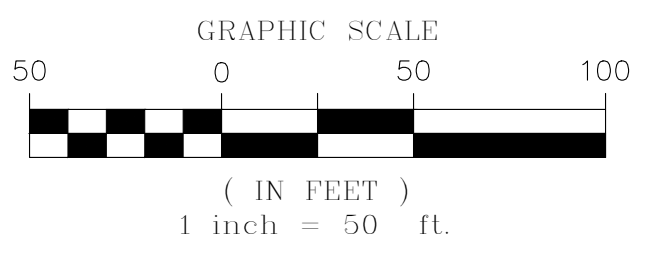
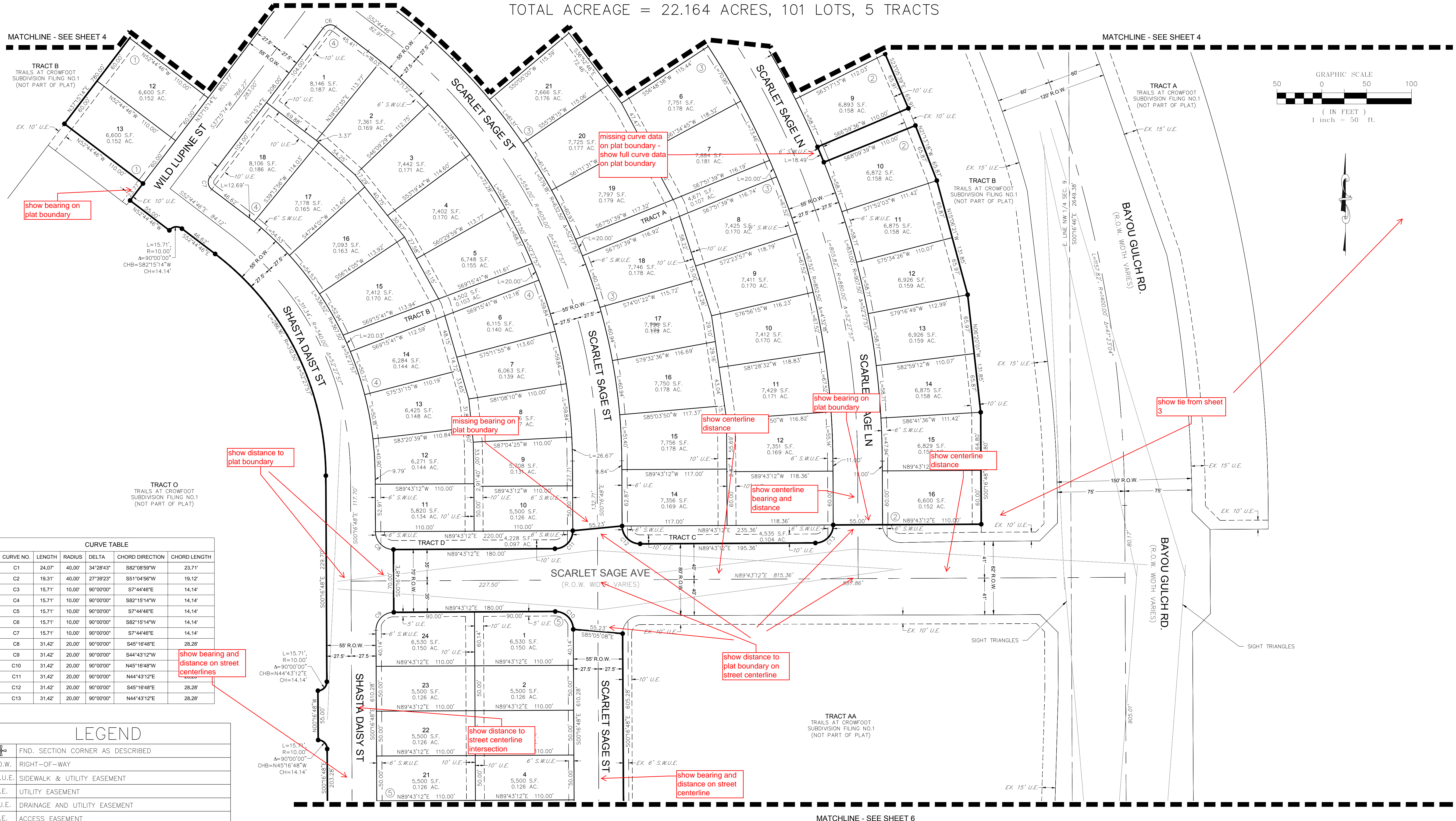


ENGINEER/SURVEYOR
CVL Consultants of Colorado, Inc.
 10333 E. Dry Creek Rd., Suite 240
 Englewood, CO 80112
 Tel: (720) 482-9526 / Fax: (720) 482-9546

TRAILS AT CROWFOOT SUBDIVISION FILING NO. 2

A REPLAT OF TRACT J OF TRAILS AT CROWFOOT FILING NO. 1
 A PART OF THE SECTIONS 4, AND 9, TOWNSHIP 7 SOUTH, RANGE 66 WEST OF THE 6th PRINCIPAL MERIDIAN,
 TOWN OF PARKER, COUNTY OF DOUGLAS, STATE OF COLORADO
 SHEET 5 OF 6

TOTAL ACREAGE = 22.164 ACRES, 101 LOTS, 5 TRACTS



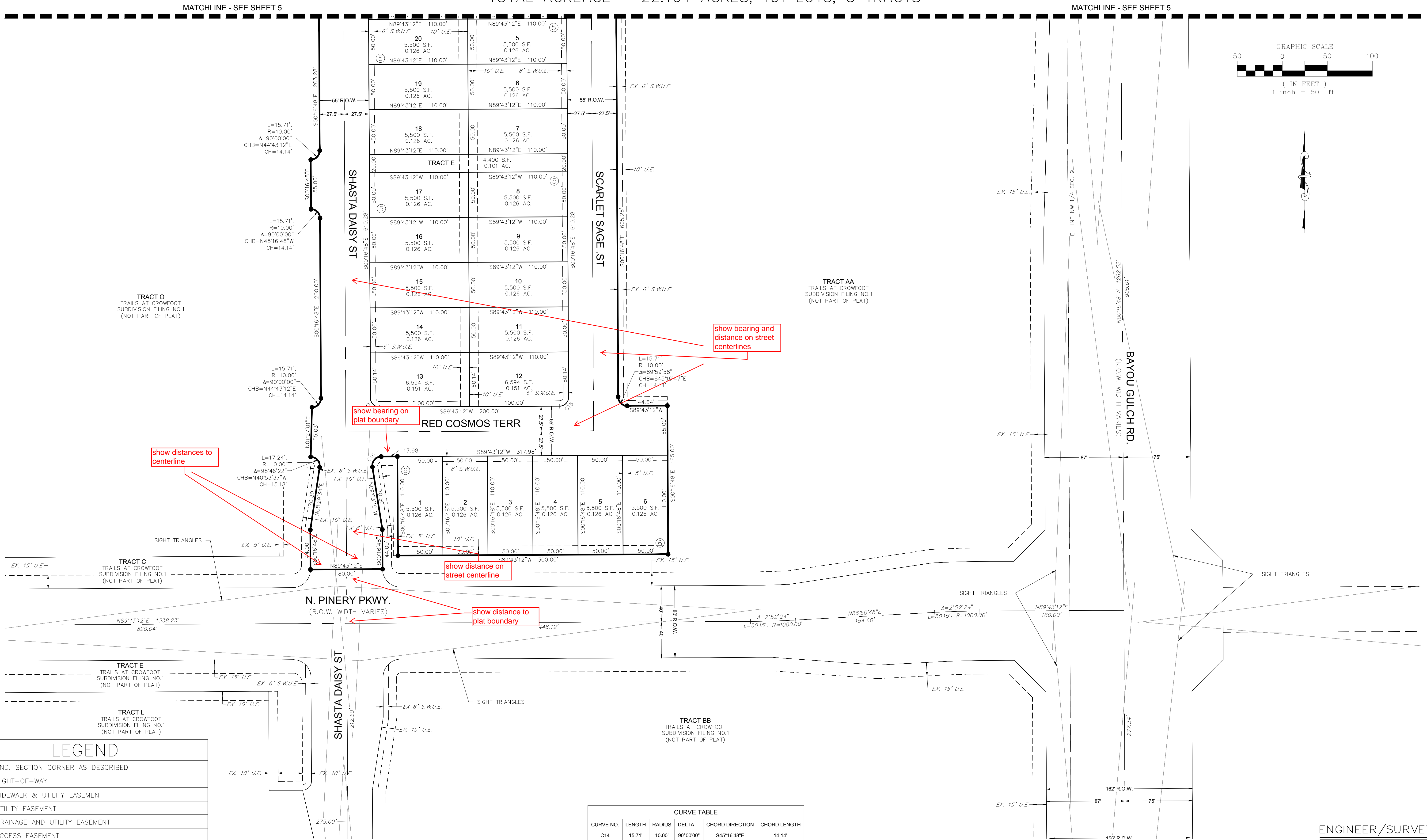
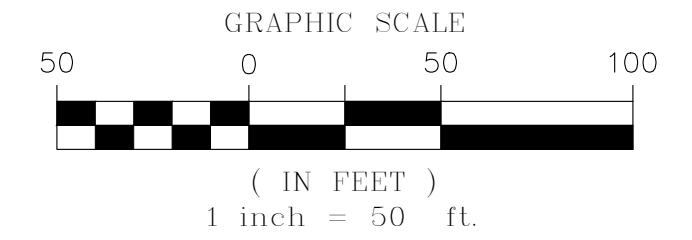
CURVE TABLE					
CURVE NO.	LENGTH	RADIUS	DELTA	CHORD DIRECTION	CHORD LENGTH
C1	24.07'	40.00'	34°28'43"	S82°08'59"W	23.71'
C2	19.31'	40.00'	27°39'23"	S61°04'56"W	19.12'
C3	15.71'	10.00'	90°00'00"	S7°44'46"E	14.14'
C4	15.71'	10.00'	90°00'00"	S82°15'14"W	14.14'
C5	15.71'	10.00'	90°00'00"	S7°44'46"E	14.14'
C6	15.71'	10.00'	90°00'00"	S82°15'14"W	14.14'
C7	15.71'	10.00'	90°00'00"	S7°44'46"E	14.14'
C8	31.42'	20.00'	90°00'00"	S45°16'48"E	28.28'
C9	31.42'	20.00'	90°00'00"	S44°43'12"W	28.28'
C10	31.42'	20.00'	90°00'00"	N45°16'48"W	28.28'
C11	31.42'	20.00'	90°00'00"	N44°43'12"E	28.28'
C12	31.42'	20.00'	90°00'00"	S45°16'48"E	28.28'
C13	31.42'	20.00'	90°00'00"	N44°43'12"E	28.28'

LEGEND	
	FND. SECTION CORNER AS DESCRIBED
	R.O.W. RIGHT-OF-WAY
	S.W.U.E. SIDEWALK & UTILITY EASEMENT
	U.E. UTILITY EASEMENT
	D.U.E. DRAINAGE AND UTILITY EASEMENT
	A.E. ACCESS EASEMENT
	G.E. GAS EASEMENT
	EX U.E. EXISTING UTILITY EASEMENT
	○ FOUND REBAR & YELLOW PLASTIC CAP "LS 17666"
	● SET NO. 6 REBAR, 30" LONG, w/2" ALUMINUM CAP STAMPED CVL LS NO. 25369 UNLESS OTHERWISE NOTED

TRAILS AT CROWFOOT SUBDIVISION FILING NO. 2

A REPLAT OF TRACT J OF TRAILS AT CROWFOOT FILING NO. 1
 A PART OF THE SECTIONS 4, AND 9, TOWNSHIP 7 SOUTH, RANGE 66 WEST OF THE 6th PRINCIPAL MERIDIAN,
 TOWN OF PARKER, COUNTY OF DOUGLAS, STATE OF COLORADO
 SHEET 6 OF 6

TOTAL ACREAGE = 22.164 ACRES, 101 LOTS, 5 TRACTS



TRACT O
 TRAILS AT CROWFOOT
 SUBDIVISION FILING NO.1
 (NOT PART OF PLAT)

TRACT AA
 TRAILS AT CROWFOOT
 SUBDIVISION FILING NO.1
 (NOT PART OF PLAT)

TRACT C
 TRAILS AT CROWFOOT
 SUBDIVISION FILING NO.1
 (NOT PART OF PLAT)

TRACT E
 TRAILS AT CROWFOOT
 SUBDIVISION FILING NO.1
 (NOT PART OF PLAT)

TRACT L
 TRAILS AT CROWFOOT
 SUBDIVISION FILING NO.1
 (NOT PART OF PLAT)

TRACT BB
 TRAILS AT CROWFOOT
 SUBDIVISION FILING NO.1
 (NOT PART OF PLAT)

LEGEND

	FND. SECTION CORNER AS DESCRIBED
	R.O.W. RIGHT-OF-WAY
	S.W.U.E. SIDEWALK & UTILITY EASEMENT
	U.E. UTILITY EASEMENT
	D.U.E. DRAINAGE AND UTILITY EASEMENT
	A.E. ACCESS EASEMENT
	G.E. GAS EASEMENT
	EX. U.E. EXISTING UTILITY EASEMENT
	SET NO. 6 REBAR, 30" LONG, w/2" ALUMINUM CAP STAMPED CVL LS NO. 25369 UNLESS OTHERWISE NOTED

CURVE TABLE

CURVE NO.	LENGTH	RADIUS	DELTA	CHORD DIRECTION	CHORD LENGTH
C14	15.71'	10.00'	90°00'00"	S45°16'48"E	14.14'
C15	15.71'	10.00'	90°00'00"	N44°43'12"E	14.14'
C16	17.24'	10.00'	98°46'22"	S40°20'01"W	15.18'