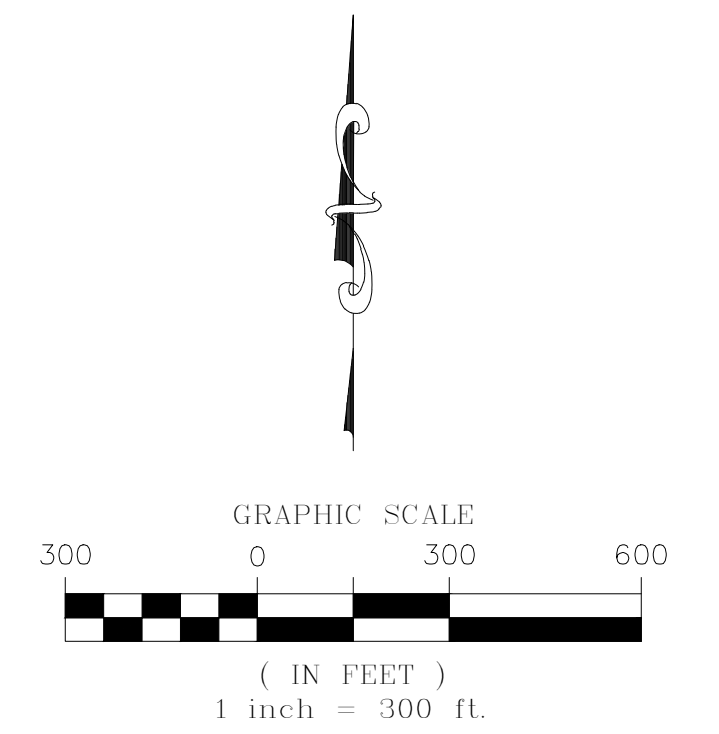


TRAILS AT CROWFOOT SUBDIVISION FILING NO. 3 ADDRESS PLAT

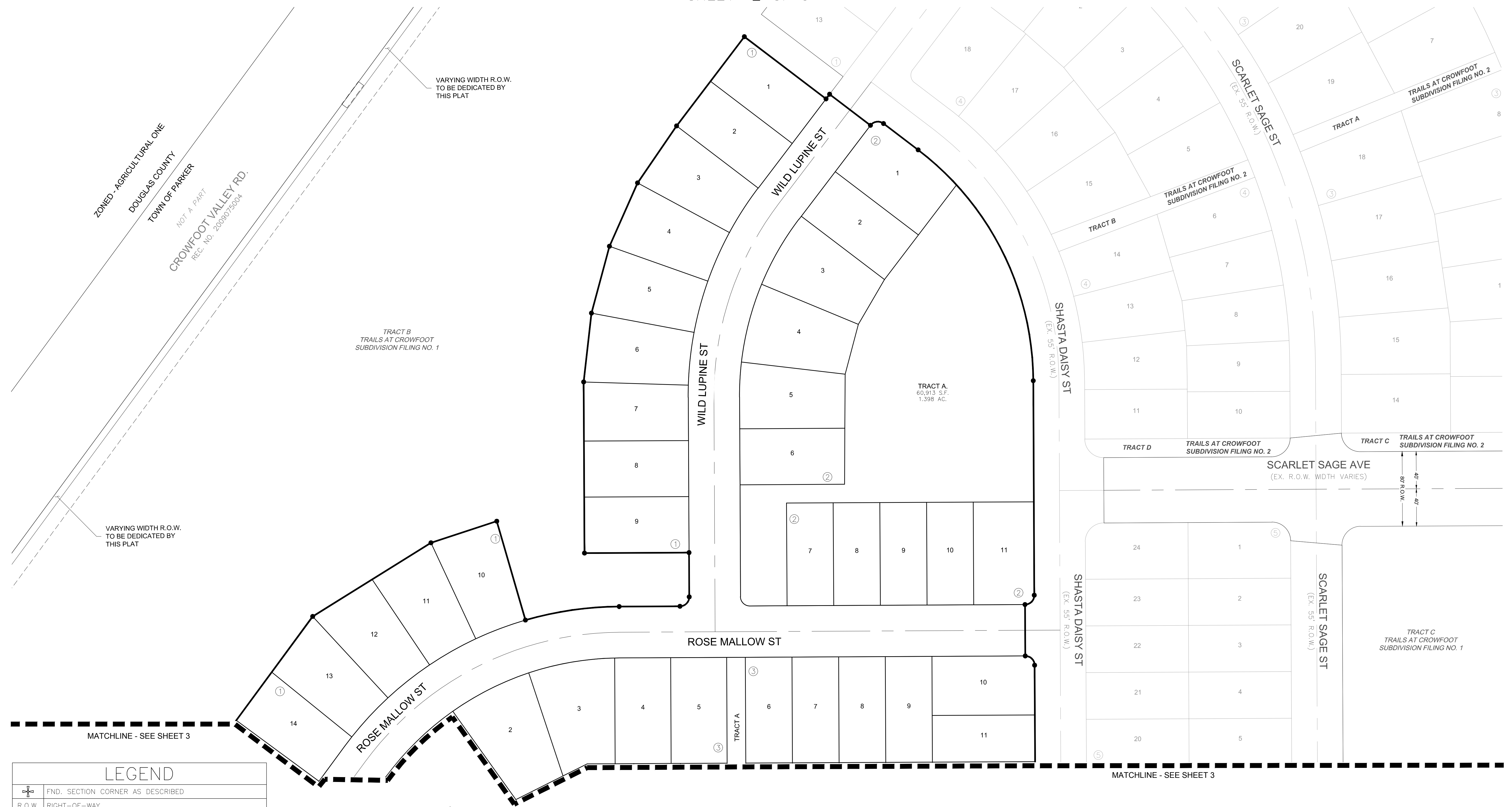
A RESUBDIVISION OF LOT 2, BLOCK 1 OF TRAILS AT CROWFOOT FILING NO. 1
A PART OF THE SECTIONS 4, 8 AND 9, TOWNSHIP 7 SOUTH, RANGE 66 WEST OF THE 6th PRINCIPAL MERIDIAN,
TOWN OF PARKER, COUNTY OF DOUGLAS, STATE OF COLORADO
SHEET 1 OF 3



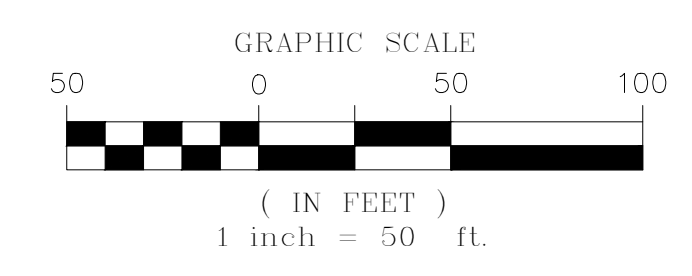
ENGINEER/SURVEYOR
CVL Consultants
of Colorado, Inc.
10333 E. Dry Creek Rd., Suite 240
Englewood, CO 80112
Tel: (720) 482-9526 / Fax: (720) 482-9546

TRAILS AT CROWFOOT SUBDIVISION FILING NO. 3 ADDRESS PLAT

A RESUBDIVISION OF LOT 2, BLOCK 1 OF TRAILS AT CROWFOOT FILING NO. 1
 A PART OF THE SECTIONS 4, 8 AND 9, TOWNSHIP 7 SOUTH, RANGE 66 WEST OF THE 6th PRINCIPAL MERIDIAN,
 TOWN OF PARKER, COUNTY OF DOUGLAS, STATE OF COLORADO
 SHEET 2 OF 3



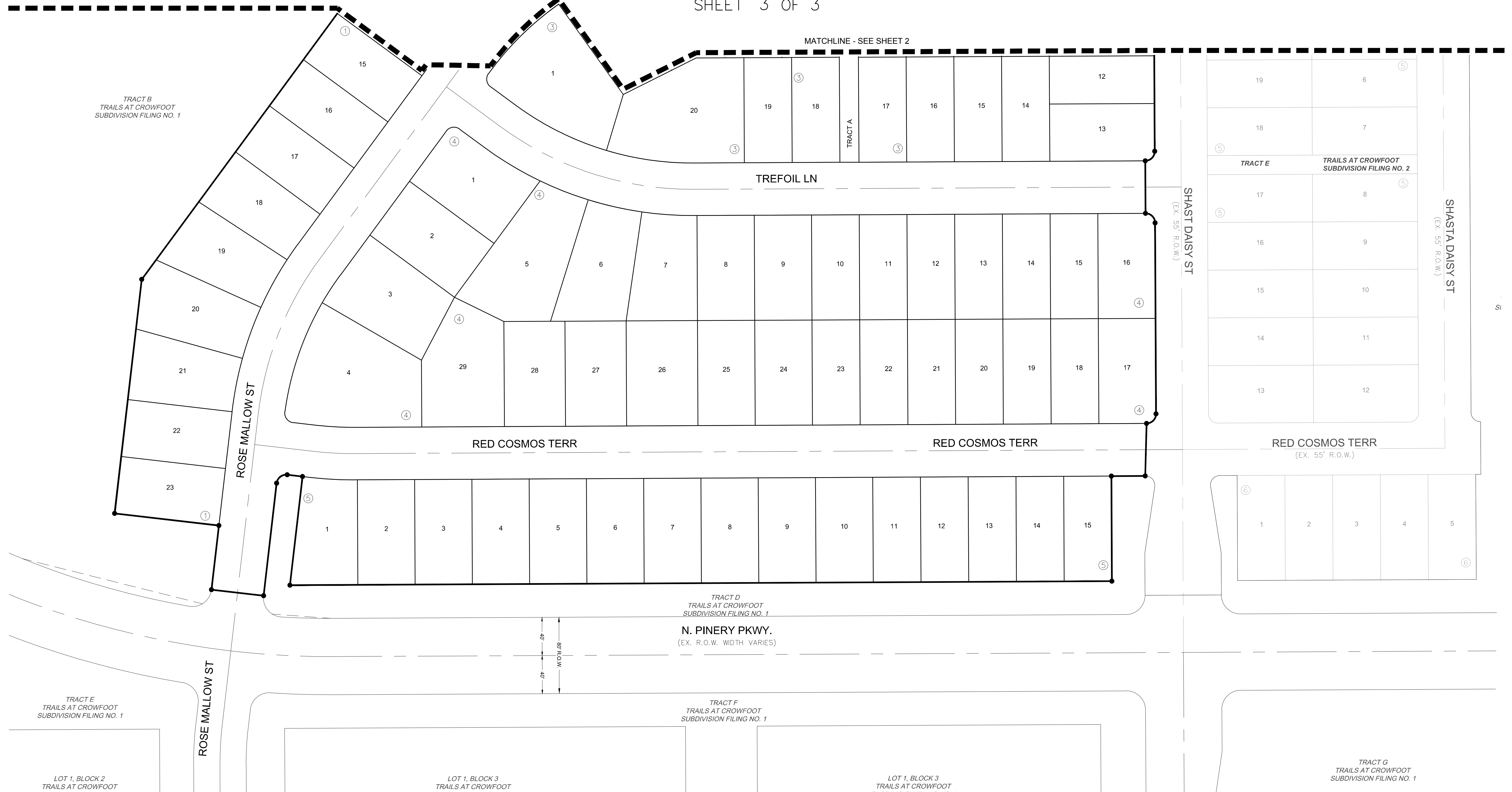
| LEGEND | |
|--------|--|
| | FND. SECTION CORNER AS DESCRIBED |
| | R.O.W. RIGHT-OF-WAY |
| | S.W.U.E. SIDEWALK & UTILITY EASEMENT |
| | U.E. UTILITY EASEMENT |
| | D.U.E. DRAINAGE AND UTILITY EASEMENT |
| | A.E. ACCESS EASEMENT |
| | G.E. GAS EASEMENT |
| | EX U.E. EXISTING UTILITY EASEMENT |
| | ○ FOUND REBAR & YELLOW PLASTIC CAP "LS 17666" |
| | ● SET NO. 6 REBAR, 30" LONG, w/2" ALUMINUM CAP STAMPED CVL LS NO. 25369 UNLESS OTHERWISE NOTED |



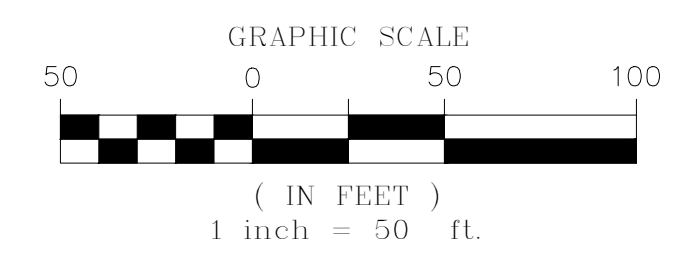
ENGINEER/SURVEYOR
CVL Consultants
 of Colorado, Inc.
 10333 E. Dry Creek Rd., Suite 240
 Englewood, CO 80112
 Tel: (720) 482-9526 / Fax: (720) 482-9546

TRAILS AT CROWFOOT SUBDIVISION FILING NO. 3 ADDRESS PLAT

A RESUBDIVISION OF LOT 2, BLOCK 1 OF TRAILS AT CROWFOOT FILING NO. 1
 A PART OF THE SECTIONS 4, 8 AND 9, TOWNSHIP 7 SOUTH, RANGE 66 WEST OF THE 6th PRINCIPAL MERIDIAN,
 TOWN OF PARKER, COUNTY OF DOUGLAS, STATE OF COLORADO
 SHEET 3 OF 3



| LEGEND | |
|--------|--|
| | FND. SECTION CORNER AS DESCRIBED |
| | R.O.W. RIGHT-OF-WAY |
| | S.W.U.E. SIDEWALK & UTILITY EASEMENT |
| | U.E. UTILITY EASEMENT |
| | D.U.E. DRAINAGE AND UTILITY EASEMENT |
| | A.E. ACCESS EASEMENT |
| | G.E. GAS EASEMENT |
| | EX U.E. EXISTING UTILITY EASEMENT |
| | FOUND REBAR & YELLOW PLASTIC CAP "LS 17666" |
| | SET NO. 6 REBAR, 30" LONG, w/2" ALUMINUM CAP STAMPED CVL LS NO. 25369 UNLESS OTHERWISE NOTED |



ENGINEER/SURVEYOR
CVL Consultants of Colorado, Inc.
 10333 E. Dry Creek Rd., Suite 240
 Englewood, CO 80112
 Tel: (720) 482-9526 / Fax: (720) 482-9546