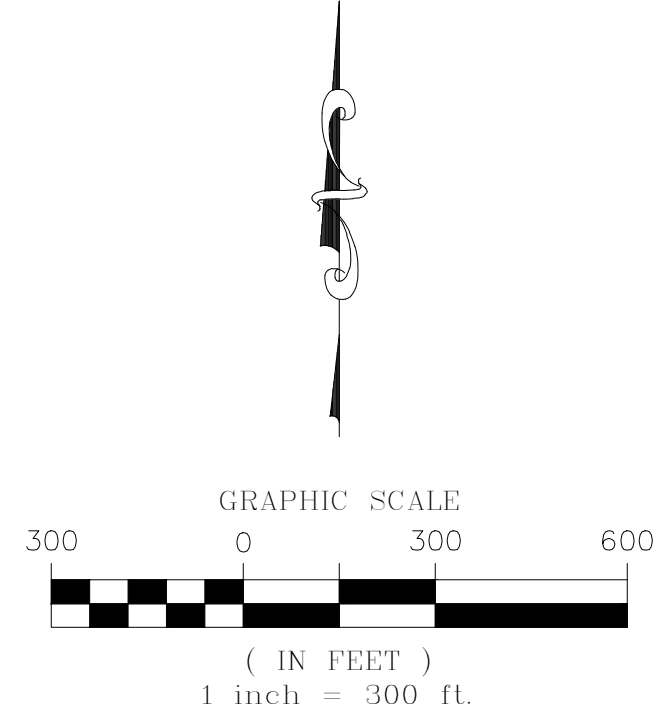
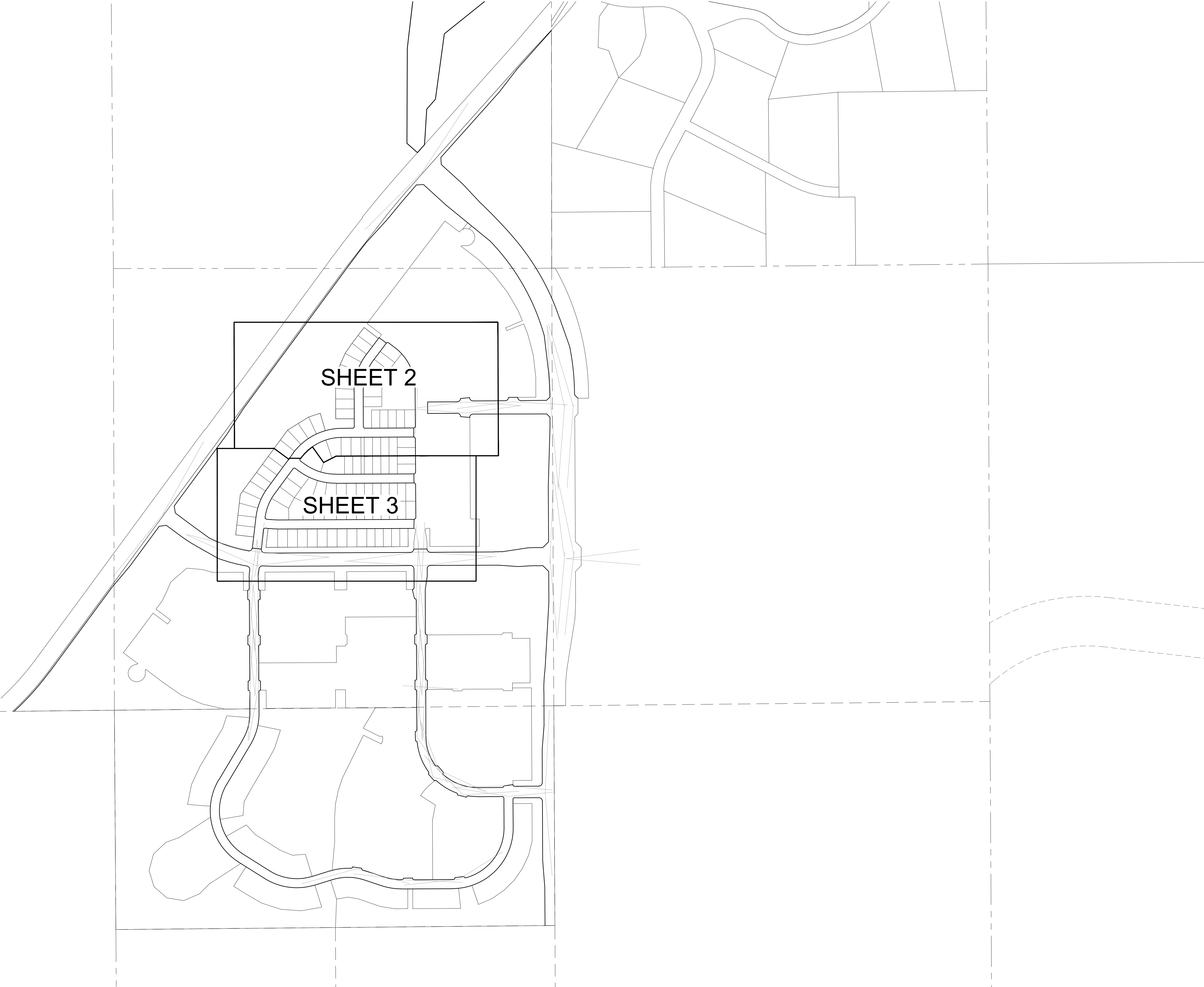


TRAILS AT CROWFOOT SUBDIVISION FILING NO. 3 ADDRESS PLAT

A RESUBDIVISION OF LOT 2, BLOCK 1 OF TRAILS AT CROWFOOT FILING NO. 1
A PART OF THE SECTIONS 4, 8 AND 9, TOWNSHIP 7 SOUTH, RANGE 66 WEST OF THE 6th PRINCIPAL MERIDIAN,
TOWN OF PARKER, COUNTY OF DOUGLAS, STATE OF COLORADO
SHEET 1 OF 3



ENGINEER/SURVEYOR
CVL Consultants
of Colorado, Inc.
10333 E. Dry Creek Rd., Suite 240
Englewood, CO 80112
Tel: (720) 482-9526 / Fax: (720) 482-9546

TRAILS AT CROWFOOT SUBDIVISION FILING NO. 3 ADDRESS PLAT

A RESUBDIVISION OF LOT 2, BLOCK 1 OF TRAILS AT CROWFOOT FILING NO. 1
 A PART OF THE SECTIONS 4, 8 AND 9, TOWNSHIP 7 SOUTH, RANGE 66 WEST OF THE 6th PRINCIPAL MERIDIAN,
 TOWN OF PARKER, COUNTY OF DOUGLAS, STATE OF COLORADO
 SHEET 2 OF 3



ZONED - AGRICULTURAL ONE
 DOUGLAS COUNTY
 TOWN OF PARKER
 NOT A PART
 CROWFOOT VALLEY RD.
 REC. NO. 2009075004

TRACT B
 TRAILS AT CROWFOOT
 SUBDIVISION FILING NO. 1
 (NOT PART OF PLAT)

TRACT A.
 60,913 S.F.
 1.398 AC.

SCARLET SAGE AVE
 (EX. R.O.W. WIDTH VARIES)

TRACT AA
 TRAILS AT CROWFOOT
 SUBDIVISION FILING NO. 1
 (NOT PART OF PLAT)

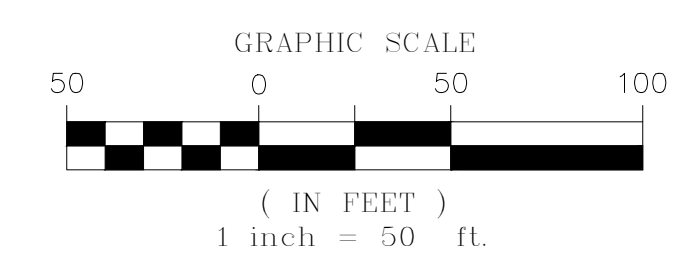
VARYING WIDTH R.O.W.
 TO BE DEDICATED BY
 THIS PLAT

VARYING WIDTH R.O.W.
 TO BE DEDICATED BY
 THIS PLAT

MATCHLINE - SEE SHEET 3

MATCHLINE - SEE SHEET 3

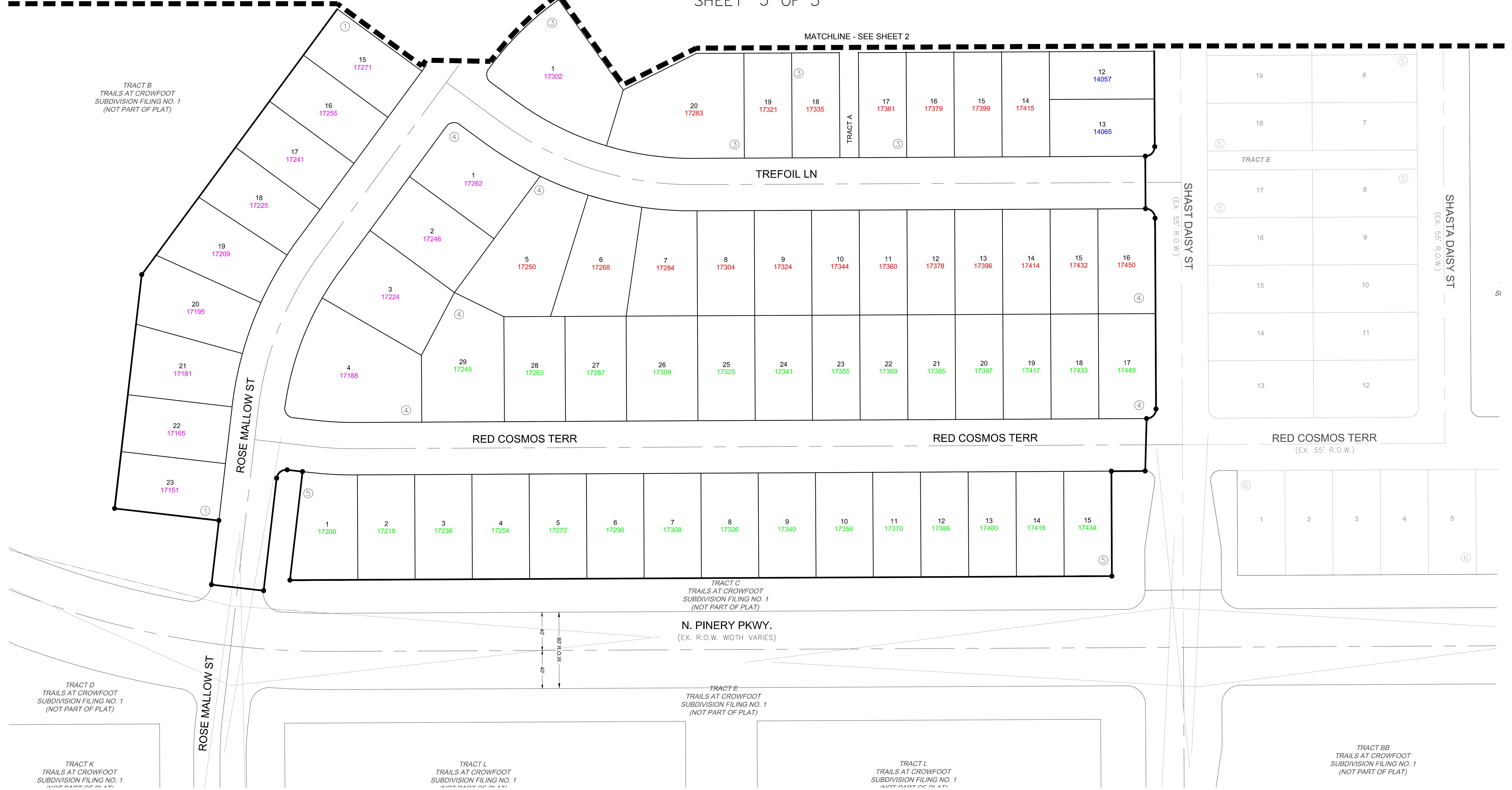
LEGEND	
	FND. SECTION CORNER AS DESCRIBED
	R.O.W. RIGHT-OF-WAY
	S.W.U.E. SIDEWALK & UTILITY EASEMENT
	U.E. UTILITY EASEMENT
	D.U.E. DRAINAGE AND UTILITY EASEMENT
	A.E. ACCESS EASEMENT
	G.E. GAS EASEMENT
	EX U.E. EXISTING UTILITY EASEMENT
	○ FOUND REBAR & YELLOW PLASTIC CAP "LS 17666"
	● SET NO. 6 REBAR, 30" LONG, w/2" ALUMINUM CAP STAMPED CVL LS NO. 25369 UNLESS OTHERWISE NOTED



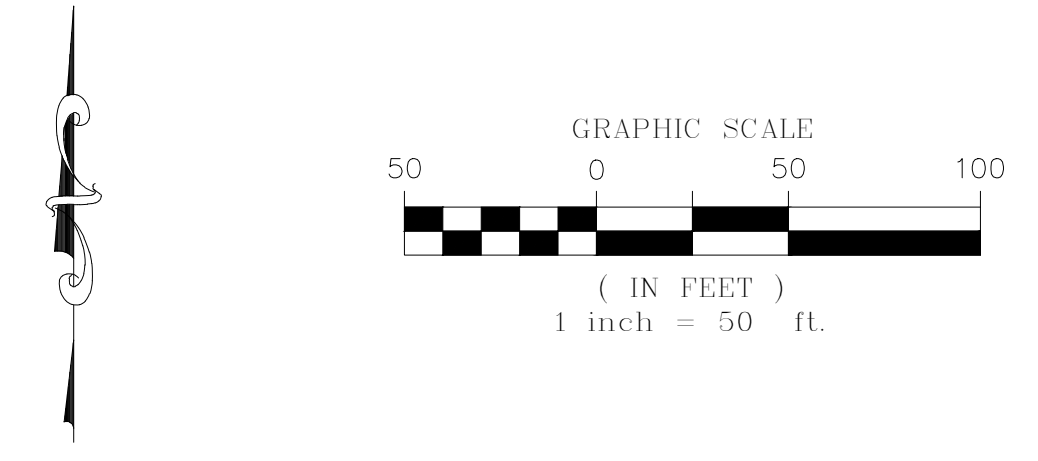
ENGINEER/SURVEYOR
CVL Consultants
 of Colorado, Inc.
 10333 E. Dry Creek Rd., Suite 240
 Englewood, CO 80112
 Tel: (720) 482-9526 / Fax: (720) 482-9546

TRAILS AT CROWFOOT SUBDIVISION FILING NO. 3 ADDRESS PLAT

A RESUBDIVISION OF LOT 2, BLOCK 1 OF TRAILS AT CROWFOOT FILING NO. 1
 A PART OF THE SECTIONS 4, 8 AND 9, TOWNSHIP 7 SOUTH, RANGE 66 WEST OF THE 6th PRINCIPAL MERIDIAN,
 TOWN OF PARKER, COUNTY OF DOUGLAS, STATE OF COLORADO
 SHEET 3 OF 3



LEGEND	
	FND. SECTION CORNER AS DESCRIBED
	R.O.W. RIGHT-OF-WAY
	S.W.U.E. SIDEWALK & UTILITY EASEMENT
	U.E. UTILITY EASEMENT
	D.U.E. DRAINAGE AND UTILITY EASEMENT
	A.E. ACCESS EASEMENT
	G.E. GAS EASEMENT
	EX U.E. EXISTING UTILITY EASEMENT
	FOUND REBAR & YELLOW PLASTIC CAP "LS 17666"
	SET NO. 6 REBAR, 30" LONG, w/2" ALUMINUM CAP STAMPED CVL LS NO. 25369 UNLESS OTHERWISE NOTED



ENGINEER/SURVEYOR
CVL Consultants of Colorado, Inc.
 10333 E. Dry Creek Rd., Suite 240
 Englewood, CO 80112
 Tel: (720) 482-9526 / Fax: (720) 482-9546